



Monograph

[urn:lsid:zoobank.org:pub:623BBCE3-12A5-45A9-802A-2ED2E15164A3](https://zoobank.org/pub:623BBCE3-12A5-45A9-802A-2ED2E15164A3)

Porifera from Ponta do Ouro (Mozambique)

Barbara CALCINAI^{1,*}, Giuseppe BELFIORE², Daniela PICA³, Fabrizio TORSANI⁴,
 Marco PALMA⁵ & Carlo CERRANO⁶

^{1,2,3,4,5,6} Dipartimento di Scienze della Vita e dell'Ambiente,
 Università Politecnica delle Marche, Ancona, Italy.

* Corresponding author: b.calcinai@staff.univpm.it

²Email: gbelf89@hotmail.it

³Email: daniela.pica@gmail.com

⁴Email: f.torsani@univpm.it

⁵Email: 2marco.palma@gmail.com

⁶Email: c.cerrano@staff.univpm.it

¹[urn:lsid:zoobank.org:author:C16E9433-A532-470E-B9A6-7FE9B9F4FEC3](https://zoobank.org/urn:lsid:zoobank.org:author:C16E9433-A532-470E-B9A6-7FE9B9F4FEC3)

²[urn:lsid:zoobank.org:author:D26DFB86-3168-4B13-915A-D19B025143F4](https://zoobank.org/urn:lsid:zoobank.org:author:D26DFB86-3168-4B13-915A-D19B025143F4)

³[urn:lsid:zoobank.org:author:67CA8471-D9AE-414B-802E-7858C6B49C62](https://zoobank.org/urn:lsid:zoobank.org:author:67CA8471-D9AE-414B-802E-7858C6B49C62)

⁴[urn:lsid:zoobank.org:author:79D7D36F-1A9B-4D43-B2A1-B671719F2D93](https://zoobank.org/urn:lsid:zoobank.org:author:79D7D36F-1A9B-4D43-B2A1-B671719F2D93)

⁵[urn:lsid:zoobank.org:author:96B40C66-6E70-45D6-A065-0BCEF4565A64](https://zoobank.org/urn:lsid:zoobank.org:author:96B40C66-6E70-45D6-A065-0BCEF4565A64)

⁶[urn:lsid:zoobank.org:author:C1E63119-46EC-456A-BB00-824293B00828](https://zoobank.org/urn:lsid:zoobank.org:author:C1E63119-46EC-456A-BB00-824293B00828)

Abstract. The diversity of Porifera from Ponta do Ouro (Mozambique) has been evaluated; this paper presents the first taxonomic effort devoted to sponges in the area, while studies of closeby areas are quite dated. Overall, 55 specimens were examined, leading to 26 described species; among these, four are new (*Hyattella sulfurea* Calcinai & Belfiore sp. nov., *H. pedunculata* Calcinai & Belfiore sp. nov., *Amphimedon palmata* Calcinai & Belfiore sp. nov. and *Phoriospongia mozambiquensis* Calcinai & Belfiore sp. nov.) and four (*Chondrosia corticata* Thiele, 1900, *Callyspongia* (*Cladochalina*) *aerizusa* Desqueyroux-Faundez, 1984, *Clathria* (*Thalysias*) *hirsuta* Hooper & Levi, 1993 and *Ciocalypta heterostyla* Hentschel, 1912) are new records for the Indian Ocean. For *Callyspongia* (*Euplacella*) *abnormis* Pulitzer-Finali, 1993, *Callyspongia* (*Callyspongia*) *pulitzeri* Van Soest & Hooper, 2020 and *Amphimedon brevispiculifera* (Dendy, 1905) this represents the first record after their initial discovery. The majority of the species have a wide distribution in the Indo-Pacific Ocean, but species from South and East Africa have also been recorded. These data highlight the characteristic of Ponta do Ouro as a transitional zone, located between a tropical and temperate biogeographic province, as well as the importance of increasing biodiversity knowledge of this biogeographic border to monitor possible shifts in the area as a consequence of climate crisis.

Keywords. Marine biodiversity, new species, new records, Indian Ocean.

Calcinai B., Belfiore G., Pica D., Torsani F., Palma M. & Cerrano C. 2020. Porifera from Ponta do Ouro (Mozambique). *European Journal of Taxonomy* 698: 1–56. <https://doi.org/10.5852/ejt.2020.698>

Introduction

The south of Mozambique, where Ponta do Ouro is located, is a unique ecosystem characterized by a high biodiversity. This richness depends on different factors such as the physical water parameters, the high mass of nutrients, the complexity of the environment and, especially, the presence of coral reefs (Pereira *et al.* 2014). Strong southeast trade winds have an impact on the climatic conditions, with cyclones in the south and monsoon in the north of the area (Pereira *et al.* 2014). The area is characterized by a water temperature with an annual average of 25°C, thanks to the Agulhas Current (Pereira *et al.* 2014); this fact allows the development of coral reef ecosystems that are among the highest latitude coral reefs in the world. Moreover, the Ponta do Ouro coast belongs to the tropical Delagoa ecoregion in the Western Indian Ocean Province (Spalding *et al.* 2007), which is characterized by a high endemism and diversity. Due to its natural richness and beauty, the south of Mozambique is under review by UNESCO as a potential World Heritage Site. Moreover, it has been classified as an important biodiversity site within the Eastern African Marine Ecoregion (Guerreiro *et al.* 2011).

The area of Ponta do Ouro town (Fig. 1) is quickly developing, and this could be associated with consequent threats, such as overfishing, coastal modification, natural resources exploitation, or unregulated and damaging tourism practices (Olson 2010). In order to preserve the biodiversity of the area, the government declared a partial protected marine area (PPMRPO) of 678 km² on 14 July 2009, stretching from Ponta do Ouro in the south to the Maputo River Mouth in Maputo Bay, in the north (Fig. 1).

The Ponta do Ouro reef system is classified as a patch reef and occupies an area of about 5 km² among the estimated 1900 km² of the reef area in Mozambique (PPMR 2009). From the Bazaruto archipelago (21°74' S, 35°42' E) to Ponta do Ouro (26°84' S, 32°89' E), the coral reef grows on sandstone, which originates from submerged fossil coastal sand dunes; fully formed reefs originating from biogenic accretion do not occur here (Pereira *et al.* 2014; Palma *et al.* 2019).

In terms of abundance, the main colonizing organisms are soft corals followed by hard corals (Daly *et al.* 2013). The coverage of live coral in Ponta do Ouro is between 33.3% and 35.5%; rock and algae are the other dominant benthic categories (respectively 40.8% and 54.3%) (Pereira *et al.* 2014). Reef species associated with the area include more than 900 species of fish (Pereira 2000), around 300 species of hard corals (Obura 2012) and more than 50 species of soft corals (Benayahu & Shlagman 2003). Alcyonacean corals of the genera *Sinularia* May, 1898 and *Lobophytum* Marenzeller, 1886 dominate the soft coral community, while the hard-coral community is represented by Scleractinian of genera *Acropora* Oken, 1815 and *Montipora* Blainville, 1830 (PPMR 2009). Other taxa such as invertebrates, ascidians (Daly *et al.* 2013) and sponges are poorly studied.

This is the first taxonomic work about the sponges of Mozambique's coast, while studies of closeby areas are quite dated: Madagascar (Lévi 1956); Mambone, Paradise Island and Inhaca Island (Lévi 1964; Thomas 1979), Europe Island and the Grand Recif de Tolaria (Vacelet & Vasseur 1965, 1971; Vacelet *et al.* 1976) and East Africa (Pulitzer-Finali 1993). More recently, a sponge assemblage in the Quirimba Archipelago has been studied for the north of Mozambique and another one from Inhaca Island for the south of Mozambique (Barnes & Bell 2002) and, quite close to the sampling area, in Sodwana Bay, the eastern part of South Africa (Samaai *et al.* 2019).

The aim of this work is the study of the diversity of the Phylum Porifera in the Area of Ponta do Ouro (Mozambique). This study is part of a wider research, the European project “Green Bubbles”, whose scope is to discover new local peculiarities that may support the development of new cultural interests for recreational divers and trigger sustainable paths for diving tourism.

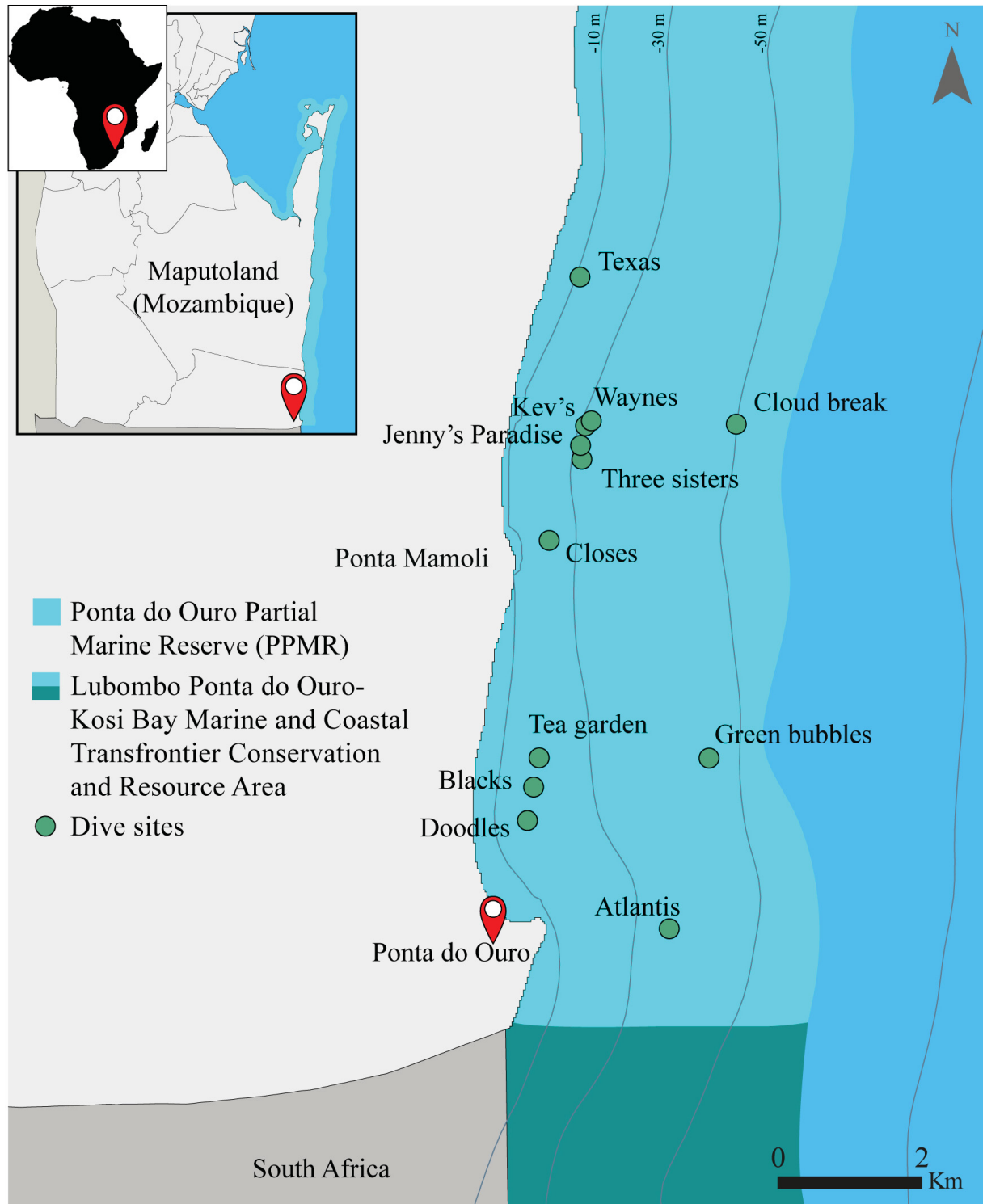


Fig. 1. Map of the coast of Mozambique where Ponta do Ouro, the partial Marine Reserve and dive sites for sampling are located.

Material and methods

The studied material was sampled during three expeditions conducted within the “Green Bubbles” project in May and November 2015 and in February 2017. Specimens were collected at shallow depths by scuba divers in several sites in Ponta do Ouro (Fig. 1) (Permit n° 09/2018 ANAC); the live sponges were photographed and the samples conserved dried or in 70° alcohol.

The specific data are reported in Appendix 1, such as the kind of conservation, sites and depths of the sampling.

In order to analyze the spicules according to Rützler (1978), small portions of the samples were treated with nitric acid at 65% and washed twice with 70° alcohol before being fixed on slides with the mounting medium Eukitt. Thick sections were made for studying the skeleton organization, according to Hooper (2000). The sections were then treated with Bioclear and mounted with Eukitt on microscopic slides. For sponges without siliceous spicules and with spongin fibers, sodium hypochlorite in a water solution was utilized to clear the fibers from tissue, the digestion was blocked with 70° alcohol, the skeletons subsequently mounted on slides and analyzed with an optical microscope. For scanning electron microscope (SEM) analysis (Philips XL20), the samples were first cut, then melted with nitric acid at 65% and washed twice with 70° alcohol, after which a portion of this solution with the suspended spicules was dropped on the stub, which was, finally, coated with gold.

The dimensions of the spicules were taken with 15 measurements under an optical microscope with a magnification of 20 and 40× and are reported as minimum size, average size and standard deviation in brackets, and maximum size (e.g., min. length–(average length, standard deviation)–max. length×min. width–(average width, standard deviation)–max. width).

The type specimens are deposited in the Museo di Storia Naturale di Genova, Italy, labelled with the acronym MSNG. All the other collected material is indicated with the acronyms PO (Porifera) or PdO (Ponta do Ouro) or IMG (IMaGe) plus a number used by the collectors during the sampling. This additional material is deposited in the Museo di Storia Naturale di Genova, Italy; skeleton, spicule and histological preparations are located at the Università Politecnica delle Marche (first author’s personal collection).

Slides with the types of *Callyspongia* (*Euplacella*) *abnormis* Pulitzer-Finali, 1993 (labelled MBA 167) and *Callyspongia subtilis* Pulitzer-Finali, 1993 (labelled KEN.59) were examined. This material was entrusted to the University of Genova (Department of Earth, Environmental and Life Sciences) by Pulitzer-Finali with the rest of his personal slide collection. The loan is not currently organized but preparations can be examined at the University of Genova, while Pulitzer-Finali’s types are deposited at Museo di Storia Naturale di Genova, Italy.

In the present paper, we adopt the classification proposed in the Systema Porifera (Hooper & Van Soest 2002) and the update by Morrow & Cárdenas (2015).

Results

The 55 examined specimens resulted in the identification of 26 species belonging to 10 orders.

Four species (*Hyattella sulfurea* Calcinai & Belfiore sp. nov., *H. pedunculata* Calcinai & Belfiore sp. nov., *Amphimedon palmata* Calcinai & Belfiore sp. nov. and *Phoriospongia mozambiquensis* Calcinai & Belfiore sp. nov.) are new to science; *Callyspongia* (*Euplacella*) *abnormis* Pulitzer-Finali, 1993, *Callyspongia* (*Callyspongia*) *pulitzeri* Van Soest & Hooper, 2020 and *Amphimedon brevispiculifera* (Dendy, 1905) were recorded for the first time since their original description.

Chondrosia corticata Thiele, 1900, *Callyspongia* (*Cladochalina*) *aerizusa* Desqueyroux-Faundez, 1984, *Clathria* (*Thalysias*) *hirsuta* Hooper & Levi, 1993 and *Ciocalypta heterostyla* Hentschel, 1912 are new records for the Indian Ocean.

Order Chondrosiida Boury-Esnault & Lopes, 1985

Family Chondrosiidae Schulze, 1877

Genus *Chondrosia* Nardo, 1847

***Chondrosia corticata* Thiele, 1900**

Fig. 2

Chondrosia corticata Thiele, 1900: 67, pl. 3 fig. 21.

Material examined

PONTA DO OURO • a single fragment of about $5 \times 2 \times 1.5$ cm; 26°49'17.512" S, 32°53'42.521" E; Kev's; 23.4 m deep; 3 Feb. 2017; Cerrano leg.; PO7.

Description

The live sponge is massive (Fig. 2A). The large, protruding oscules in the live specimen (Fig. 2A), collapsed in the preserved sample. The color varies from dirty white to brown; the sides exposed are darker than other parts. The specimen preserved in alcohol shows the same color variation, with a lighter interior. The surface is smooth, with numerous foreign materials. The consistence of the sponge in spirit is soft and compressible. The fragment is cavernous with a thick cortex of about 0.7–2 mm (Fig. 2A–B), covering a soft pulpy choanosome, cream-colored (Fig. 2A).

Remarks

The absence of spicules and of an organic skeleton, the parameters usually used to discriminate sponge species, makes it difficult to distinguish between species of *Chondrosia* Nardo, 1847 leading some scientists to consider certain species such as *C. reniformis* (the type species of the genus) as cosmopolitan (Lazoski *et al.* 2001).

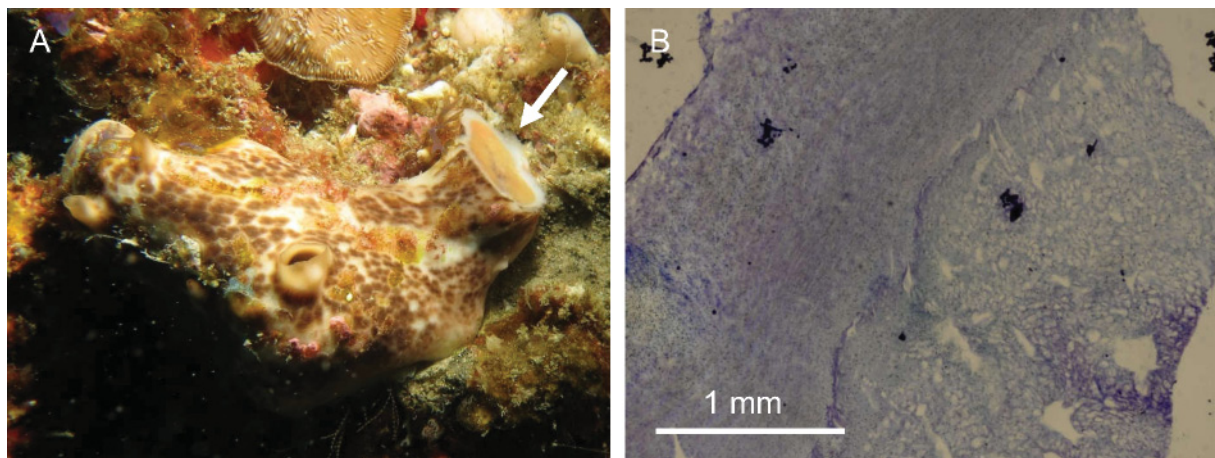


Fig. 2. *Chondrosia corticata* Thiele, 1900. **A.** Specimen (PO7) *in situ*. The arrow points a fresh cut showing the sponge's thick ectosome. **B.** Histological section showing the thick ectosome and the cavernous choanosome.

This genus includes 10 accepted species and one (*C. pendulus* Gammil, 1997) under *inquirendum* (Van Soest *et al.* 2019). Among the species from the Indo-Pacific Area, *C. chucalla* de Laubenfels, 1936 differs from the studied material in the thinner cortex (250 μ m) and in the amount of foreign material described as “enormous”. *Chondrosia debilis* Thiele, 1900 has been recorded in this ecoregion (Lévi 1958; Vacelet & Vasseur 1965, 1971, 1976), but it differs in the characteristic wrinkles of the surface. *Chondrosia ramsayi* Lendenfeld, 1885 differs in its color, varying from bluish black to dark brown, and its rough surface. The inner part is dark brown. *Chondrosia reticulata* (Carter, 1885) is rich in foreign materials and doesn’t show a clear cortex. *Chondrosia rugosa* Hentschel, 1909 has a surface covered by papillae and wrinkles and a slightly thicker (0.7–1.5 mm) cortex.

The described specimen fits with *Chondrosia corticata* in the general morphology, color, and mainly in the presence of a thick cortex, embedded with foreign spicules and debris, that is peculiar in this species (Thiele 1900).

This is the first record for the Western Indian Ocean.

Order Verongiida Bergquist, 1978
Family Pseudoceratinidae Carter, 1885
Genus *Pseudoceratina* Carter, 1885

***Pseudoceratina purpurea* (Carter, 1880)**

Fig. 3

Aplysina purpurea Carter, 1880: 36.

Material examined

PONTADO OURO • two fragments of about 5 × 2 × 2 and 6 × 3 × 3 cm; 26°49′17.512″ S, 32°53′42.514″ E; Kev’s; 23.4 m deep; 3 Feb. 2017; Cerrano leg.; PO4 • 1 spec.; Jenny’s Paradise; 26°46′50.336″ S, 32°54′12.329″ E; 17.8 m deep; 12 Apr. 2017; Cerrano leg.; PO97.

Description

The live specimens are massively encrusting (Fig. 3A) or massively, irregularly spherical (Fig. 3B). They have an uneven surface with scattered, small, sharp conules and prominent oscula (Fig. 3B). The

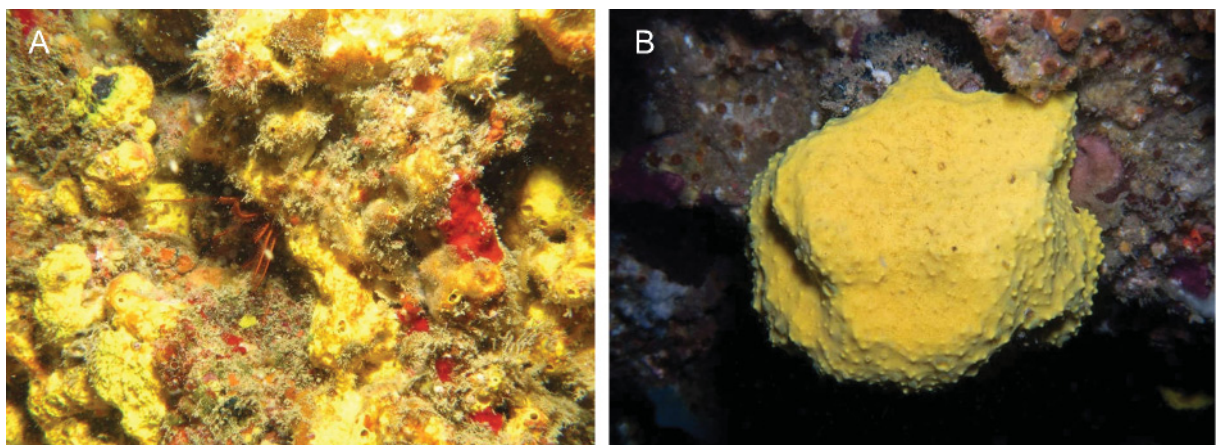


Fig. 3. *Pseudoceratina purpurea* (Carter, 1880). **A.** Encrusting specimen *in situ* (PO4). **B.** Massive specimen *in situ* (PO97).

live sponge is light yellow (Fig. 3A–B); the alcohol-preserved specimens become dark purple, and have a smooth and irregular surface. The consistence is tough.

SKELETON. Spongin fibers scarcely developed, the choanosome is collagenous.

Remarks

The specimens belong to the genus *Pseudoceratina* Carter, 1885 due to the fibrous, dendritic skeleton and to the dense and collagenous matrix. There are four valid species in this genus, all with an Indo-Pacific distribution (Van Soest *et al.* 2019). *Pseudoceratina arabica* (Keller, 1889) contains abundant fibers and is characterized by high conules; *P. durissima* Carter, 1885 has been recorded in south-east Australia and shows a blue-black live color, with a smooth surface. *Pseudoceratina verrucosa* Bergquist, 1995 differs in its strongly verrucose surface and thicker fibers.

The specimens fit perfectly with the original description of *Pseudoceratina purpurea* (Carter, 1880) in the general morphology and in the scarcely developed fibers. More recent, complete description and illustrations are available in Bergquist (1965: 135, fig. 6, as *Psammaphysilla purpurea*).

The species is widely distributed in the Indo-Pacific Ocean and has been already recorded in Madagascar (Vacelet *et al.* 1976).

Order Dictyoceratida Minchin, 1900
Family Spongiidae Gray, 1867
Genus *Hyattella* Lendenfeld, 1888

Hyattella sulfurea Calcinaï & Belfiore sp. nov.

[urn:lsid:zoobank.org:act:35359CE5-EA33-4149-86E7-A221B964A78E](https://zoobank.org/act:35359CE5-EA33-4149-86E7-A221B964A78E)

Fig. 4

Diagnosis

A species of *Hyattella* characterized by its light yellow color and fibers without inclusions.

Etymology

Named after its yellow color in life, from the Latin name ‘*sulfureus*’, meaning ‘yellow’.

Material examined

Holotype

PONTA DO OURO • 3 small fragments, size of the largest about $3 \times 1.5 \times 0.7$ cm; $26^{\circ}50'36.881''$ S, $32^{\circ}54'54.471''$ E; Atlantis; 47.7 m deep; 4 Mar. 2017; Cerrano leg.; MSNG 61417.

Description

The live sponge (Fig. 4A) is spherical, irregularly massive; on the surface, a net of fibers creates a clear web pattern connecting the prominent oscula among the thin cuticle. Where the sponge is not covered by foreign material and epibionts, the color appears light yellow (Fig. 4A). The color in the preserved state is dark brown (the pigments colored also the alcohol with a dark pinkish tinge). The sponge is firm and compressible; the body is lacunose.

SKELETON. It consists of a quite regular network of primary fibers, 25–55 μ m wide, the secondary fibers, 10–20 μ m wide, form polygonal meshes of 200–250 μ m in dimensions (Fig. 4B). Primary fibers less common with respect to secondary ones. All the fibers are free from inclusions.

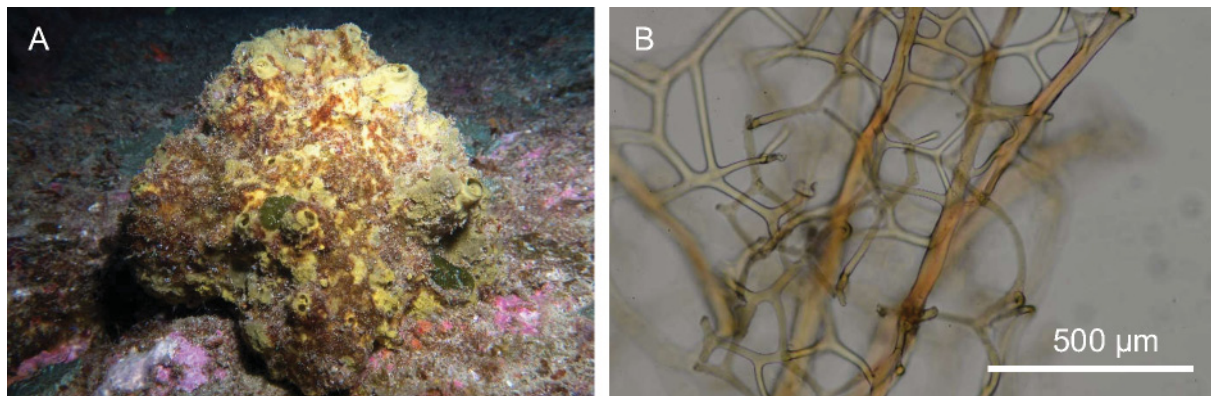


Fig. 4. *Hyattella sulfurea* Calcinaï & Belfiore sp. nov. **A.** Holotype MSNG 61417 *in situ*. **B.** Network of primary fibers.

Remarks

The species of the genus *Hyattella* have a lacunose body, an unarmoured surface and a skeleton composed of common, primary fibers linked by secondary fibers; primary fibres are cored and the secondary are free of inclusion (Cook & Bergquist 2002). However, the species *Hyattella cavernosa* (Pallas, 1766), whose skeleton is free of foreign material (see Lendenfeld 1889: 298, as *Hippospongia dura*), such as *H. sulfurea* sp. nov., is included in this genus. On that note, we consider the species here described belonging to the genus *Hyattella*, on the basis of its lacunose body, unarmored surface, common primary fibers and the presence of a dermal reticulation. Other related genera, such as *Spongia* Linnaeus, 1759 and *Hippospongia* Schulze, 1879 include species devoid of a lacunose body, or devoid of common primary fibers or a dermal reticulation.

This genus includes 21 species, all with an Indo-Pacific distribution except for *H. obscura* Lendenfeld, 1889 and *H. cavernosa* (Pallas, 1766) from the Atlantic Ocean (Van Soest *et al.* 2019). All these species are characterized by thicker primary and secondary fibers. Only *H. meander* Lendenfeld, 1889 has thinner primary and secondary fibers of 47 µm and 27–47 µm, respectively, but it is branched and its primary fibers are full of sand.

Hyattella pedunculata Calcinaï & Belfiore sp. nov.

[urn:lsid:zoobank.org:act:5D86D9AC-962D-48A7-BF1D-12879B09E573](https://zoobank.org/act:5D86D9AC-962D-48A7-BF1D-12879B09E573)

Fig. 5

Diagnosis

A species of *Hyattella* characterized by a globular body, supported by a short stalk; small-sized fibers and free of inclusion.

Etymology

The species is named ‘*pedunculata*’ due to its characteristic stalk, in Latin ‘*pedunculus*’.

Material examined

Holotype

PONTA DO OURO • fragment about 7 × 3 × 2.5 cm; 26°46′38.829″ S, 32°54′17.381″ E; Waynes; 40.6 m deep; 17 Feb. 2017; Cerrano leg.; MSNG 61418.

Paratype

PONTA DO OURO • 2 fragments, the biggest, preserved dry, is $3 \times 2 \times 1.5$ cm; Cloud break; 18 May 2015; Torsani leg; MSNG 61419.

Description

The sponge is pedunculate and the massive, globular body is supported by a short stalk (Fig. 5A–B). The color is reddish-pink, but in alcohol it turns creamy. The reddish color is still preserved in the dried

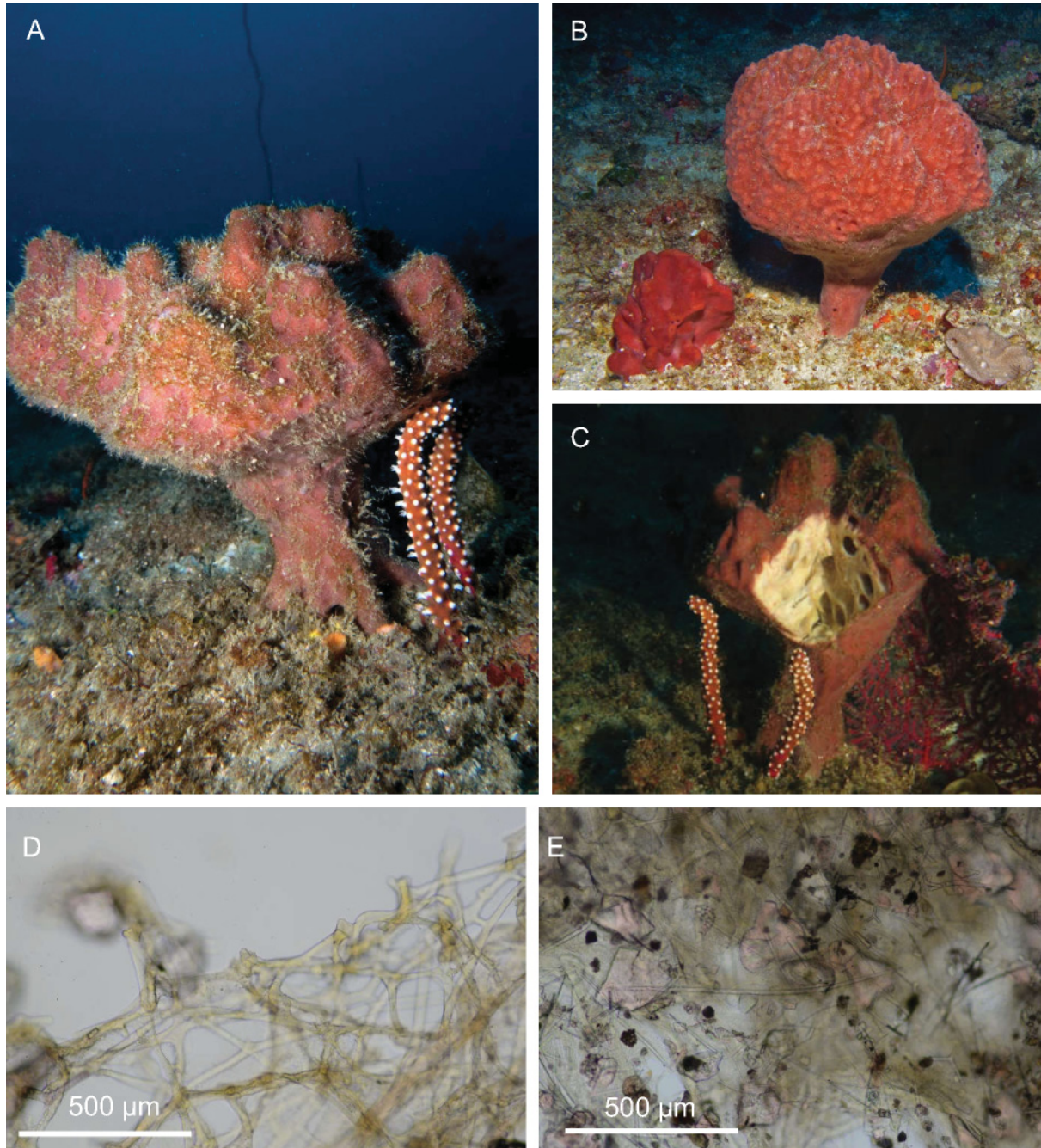


Fig. 5. *Hyattella pedunculata* Calcinai & Belfiore sp. nov. **A, C.** Specimen *in situ*, paratype MSNG 61419; C shows the internal, lacunose body. **B.** Holotype MSNG 61418. **D.** Network of fibers. **E.** Superficial cuticle with foreign sand.

state. The paratype (MSNG 61419) presents irregular short and thick digitations (Fig. 5A, C) while in the holotype (MSNG 61418) the surface is more even (Fig. 5B). At a microscopic observation, the surface is smooth and appears cribrate; the consistence is firm but compressible. The body is cavernous, completely perforated by large lacunae (Fig. 5C).

SKELETON. It consists of a network of long primary fibers, 10–25 μm , linked by very short secondary fibers, 7.5–20 μm in diameter, forming irregular meshes, around 250 μm wide (Fig. 5D); fibers are free from inclusions. Presence of rounded foreign bodies 100–200 μm in section on superficial cuticle (Fig. 5E).

Remarks

The specimens belong to the genus *Hyattella* Lendenfeld, 1888, showing a lacunose body, an unarmoured surface and a skeleton composed by common primary fibers linked by secondary fibers. This species is characterized by the small size of its primary and secondary fibers compared to the size of the fibers in the other species of the genus; moreover, the pedunculate shape is rare among species of the genus *Hyattella*; only *Hyattella globosa* Lendenfeld, 1889 partially fits the studied specimens in the general morphology (spherical sponge, attached by a small base) and in its cribrate surface. The principal differences are in the larger dimensions of the fibers (up to 100 μm) and in the presence of compound meshes creating ‘perforated plates’ in *H. globosa*.

Order Haplosclerida Topsent, 1928

Family Callyspongiidae Laubenfels, 1936

Genus *Callyspongia* Duchassing & Michelotti, 1864

Callyspongia (*Cladochalina*) Schmidt, 1870

***Callyspongia* (*Cladochalina*) *aerizusa* Desqueyroux-Faundez, 1984**

Fig. 6

Callyspongia (*Cladochalina*) *aerizusa* Desqueyroux-Faundez, 1984: 803, figs 18, 21, pl. 18, pl. 21 figs 157–161.

Material examined

PONTA DO OURO • 1 alcohol preserved fragment of about $4 \times 2 \times 1$ cm; Doodle; $26^{\circ}49'50.408''$ S, $32^{\circ}53'45.97''$ E; 18 m deep; 14 Nov. 2015; Cerrano leg.; PdO18a • 2 small fragments, alcohol preserved, about $3 \times 1 \times 1$ cm; $26^{\circ}50'36.881''$ S $32^{\circ}53'42.5''$ E; Kev's; 24.1 m deep; 11 Mar. 2017; Cerrano leg.; PO82 • 1 specimen preserved dry, $7 \times 1 \times 1$ cm; $26^{\circ}46'55.65''$ S, $32^{\circ}54'13.413''$ E; Three Sisters; 24.2 m deep; 14 Mar. 2017; Cerrano leg.; PO86.

Description

Live sponge erect, cylindrical-tubular (Fig. 6A–B); the examined specimens are pink (Fig. 6B), pale violet (Fig. 6A) or creamy-white (Fig. 6C). The samples, preserved in alcohol, turn sand-colored, while the dryly preserved sample is creamy-white colored. The surface is strongly conulose (Fig. 6A–C). The consistence is very tough, elastic and compressible in samples preserved in alcohol, while the dried sample is very firm and uncompressible.

SKELETON. Ectosome (Fig. 6D) formed by reticulation of three sizes of fibers running tangentially: multispicular primary fibers, 40–110 μm in section, forming triangular-polygonal meshes of 490–850 μm in size; pauci-multispicular secondary fibers 15–50 μm and unispicular (at most 3) tertiary fibers, 5–(7.3, 1.8)–10 μm , forming sub-triangular meshes. Choanosome (Fig. 6E) formed by the reticulation of thick ascending multispicular primary fibers, 60–110 μm in section; the primary fibers are linked

through pauci-multispicular secondary fibers, 20–70 μm , forming quite regular rectangular meshes of $240\text{--}360 \times 220\text{--}250 \mu\text{m}$ in dimensions; presence also of the third size of unispicular fibers, 4–10 μm .

SPICULES. Slender and slightly curved oxeas with acerate and rounded tips (Fig. 6F), 70–(87.5, 8.5)–95 $\mu\text{m} \times 2\text{--}(4.25, 1.2)\text{--}5 \mu\text{m}$.

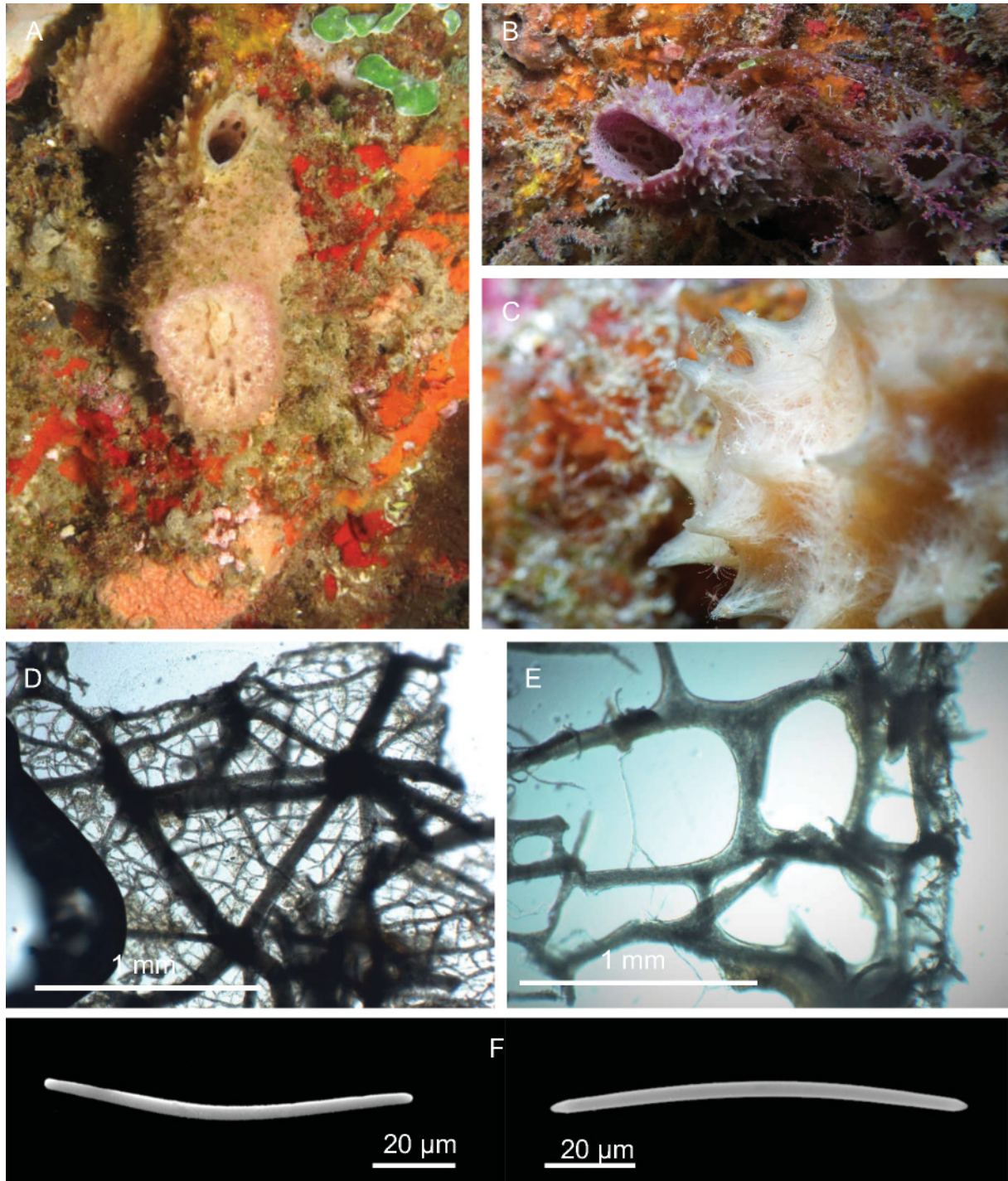


Fig. 6. *Callyspongia* (*Cladochalina*) *aerizusa* Desqueyroux-Faundez, 1984. **A–C.** Specimens *in situ*, respectively PdO18a, PO82 and PO86. **D.** Ectosomal skeleton. **E.** Choanosomal skeleton. **F.** Oxeas.

Remarks

These specimens belong to the subgenus *Callyspongia* (*Cladochalina*) Schmidt, 1870 based on the growth form, spiny surface, three sizes of irregular mesh in the ectosome and three sizes of irregular mesh in choanosomal skeleton (Desqueyroux-Faundez & Valentine 2002a).

Hitherto, 27 species are assigned to this subgenus, 19 of which have a distribution in the Indo-Pacific Ocean. The original descriptions of *C. (Cladochalina) manus* Lendenfeld, 1887, *C. (Cladochalina) spinifera* (Carter, 1887), *C. (Cladochalina) rautenfeldi* (Topsent, 1928), *C. (Cladochalina) asparagus* (Lamarck, 1814), *C. (Cladochalina) aspericornis* (Lamarck, 1814) and *C. (Cladochalina) plancella* (Lamarck, 1814) are insufficient and they remain as unique records of the respective species. *Callyspongia (Cladochalina) affinis* (Hentschel, 1912), compared to our specimens, has spicules different in shape and size (tornotes of 100 µm). *Callyspongia (Cladochalina) glomerata* (Whitelegge, 1897), *C. (Cladochalina) foliacea* (Esper, 1797) and *C. (Cladochalina) pergamentacea* (Ridley, 1881) have a different shape (respectively cake-shaped with tubes, sub-erect and irregular shape and massive-globular shape).

Other species differ in the characteristics of the skeleton: *C. (Cladochalina) diffusa* (Ridley, 1884), *C. (Cladochalina) oriamensis* Pulitzer-Finali, 1982, *C. (Cladochalina) spinosissima* (Dendy, 1887), *C. (Cladochalina) spinilamella* (Dendy, 1889) and *C. (Cladochalina) thurstoni* (Burton, 1930) have different shapes of the meshes, while *C. (Cladochalina) subarmigera* (Ridley, 1884) has thicker choanosomal fibers and unispicular ectosomal fibers; *C. (Cladochalina) saramensis* (Wilson, 1925) has smaller choanosomal fibers of 40–50 µm. *Callyspongia (Cladochalina) fibrosa* (Ridley & Dendy, 1886) differs in the spicule size (100 × 3.2 µm) and in the general morphology (branched).

The morphology, the skeleton and the spicule size of the specimens entirely fit the original description of *Callyspongia (Cladochalina) aerizusa* Desqueyroux-Faundez, 1984.

The hydroid *Zyzzyzus warreni* Calder, 1988 (Class Hydrozoa, Phylum Cnidaria) grew on two specimens.

This is the first record of *C. (Cladochalina) aerizusa* in the Indian Ocean. Hitherto, others were in the Great Barrier Reef and in New Caledonia, where the holotype was recorded.

Callyspongia (Euplacella) Lendenfeld, 1887

Callyspongia (Euplacella) abnormis Pulitzer-Finali, 1993

Fig. 7

Callyspongia abnormis Pulitzer-Finali, 1993: 340, fig. 78.

Material examined

PONTA DO OURO • 5 fragments preserved dry, the larger is about 10 × 3 cm and 4 mm thick; 26°49'17.512" S, 32°53'42.518" E; Kev's; 23.4 m deep; 3 Feb. 2017; Cerrano leg.; PO5 • 1 fragment alcohol preserved, 1 dried fragment about 13 × 6 cm × 4 mm; 26°47'34.8" S, 32°53'57.665" E; Close; 18.6 m deep; 9 Feb. 2017; Cerrano leg.; PO30 • Slide preparations of the holotype, labelled MBA 167, belonging to the author's personal collection.

Description

Live sponges erect, foliaceous, lamellar, about 4–5 mm thick, and with scattered, digitate processes (Fig. 7A–B). On one side of the sponge, roundish vents, about 300–400 µm in diameter, are grouped (Fig. 7B), while on the opposite side, numerous pores are scattered and not visible to the naked eye. The

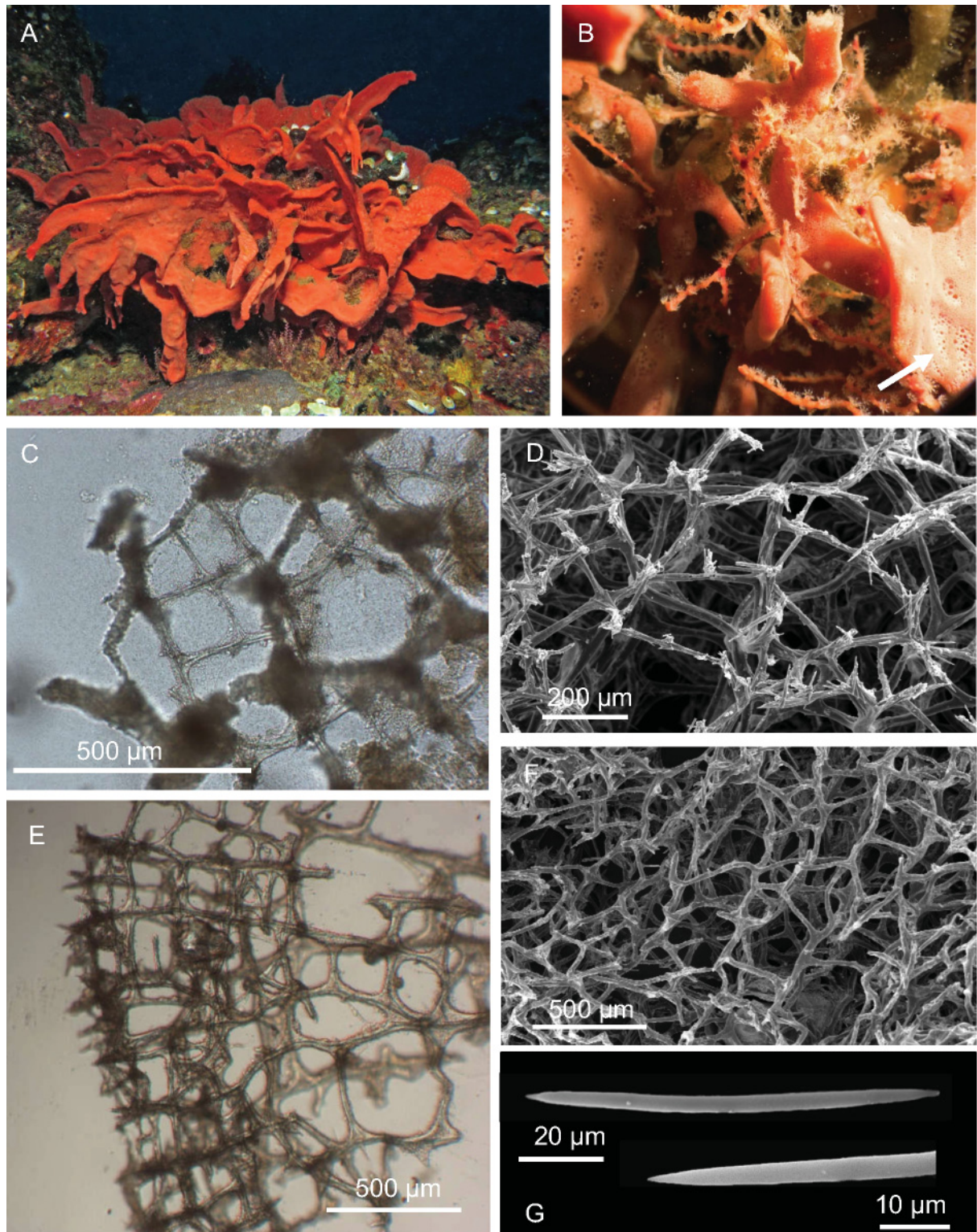


Fig. 7. *Callyspongia (Euplacella) abnormis* Pulitzer-Finali, 1993. **A.** The specimen PO30 *in situ*. **B.** Magnification of the specimen PO5, with groups of roundish vents in evidence (arrow). **C.** Ectosomal skeleton. **D.** SEM picture of the ectosomal skeleton. **E.** Choanosomal skeleton. **F.** SEM picture of the choanosomal skeleton. **G.** Oxea and magnification of the tip.

color in life is brick red; ochre in preserved specimens. Surface optically smooth, but microhispid at microscope magnification. The consistence is soft and compressible, rough at touch.

SKELETON. Ectosome (Fig. 7C–D) formed by a reticulation of paucispicular (2–5 oxeas) fibers, 18–35 μm in section, with no marked difference between primary and secondary fibers; the meshes are irregular and 150–350 μm wide, and are echinated by free spicules. Choanosome (Fig. 7E–F) formed by reticulation of thicker, paucispicular (4–8 oxeas) fibers, 30–45 μm , that form irregular, rounded or polygonal meshes, 230–360 μm wide.

SPICULES. Slender and slightly curved oxeas with acerate tips, 90–(102.5, 11.9)–115 $\mu\text{m} \times 2$ –(5, 1.4)–6 μm (Fig. 7G).

Remarks

These samples fit with *C. abnormis* Pulitzer-Finali, 1993 from Mombasa, Kenya, in external morphology, skeleton structure, and spicule shape and size. The examination of the slides of the holotype confirms the identification. This new finding allowed us to assign the species to the subgenus *Euplacella*, considering that the ectosomal skeleton is made by one size of small rounded mesh, echinated by spicules. This is the first record of the species since its original description.

Callyspongia (*Callyspongia*) Duchassaing & Michelotti, 1864

Callyspongia (*Callyspongia*) *pulitzeri* Van Soest & Hooper, 2020

Fig. 8

Callyspongia subtilis Pulitzer-Finali, 1993: 338, fig. 76.

Material examined

PONTADO OURO • 1 small fragment of a branch, about 3 \times 1 \times 1 cm; 26°46'39.864" S, 32°55'25.355" E; Cloud break; 36 m deep; 22 May 2015; Torsani leg.; IMG0827 • Slide preparation of the holotype, labelled KEN.59, belonging to the author's personal collection.

Description

Live sponge branching in shape, with prominent oscula organized in a row in the upper side (Fig. 8A). Color is light violet with visible whitish lines (Fig. 8A). The dried specimen is microhispid and spiny in the upper surface, close to the oscula, smoother in the basal part. The consistence is tough and incompressible.

SKELETON. Ectosome formed by a reticulation of unispicular primary fibers, 25–45 μm in section, and secondary unispicular fibers, 10–15 μm (Fig. 8B); the meshes are quadrangular and quite regular (Fig. 8B–C), 230–270 \times 250–350 μm . Choanosome formed by a regular reticulation of multispicular fibers, 45–65 μm in section, linked by secondary spongin fibers (Fig. 8D–E). These are cored by single oxeas (monospicular) and are 25–35 μm in section (Fig. 8D). The rounded meshes formed are 180–275 μm wide.

SPICULES. Slightly curved oxeas with acerate tips (Fig. 8F), 77.5–(87, 6.3)–97.5 $\mu\text{m} \times 1.25$ –(3.76, 1.1)–5 μm .

Remarks

The morphology, skeleton, and spicule size, as well as the shape of the examined specimen fit those of the original description from North Kenya Banks. Moreover, the prominent oscula organized in a row on the upper side and the multispicular primary fibers of the choanosome are peculiar characteristics. The examination of the holotype (*Callyspongia subtilis* Pulitzer-Finali, 1993) confirms the identification.

Callyspongia subtilis Pulitzer-Finali, 1993 was a junior homonym recently removed by Van Soest & Hooper (2020) who renamed the species in honor of Gustavo Pulitzer-Finali.

This is the first record of the species since its original description from Kenya.

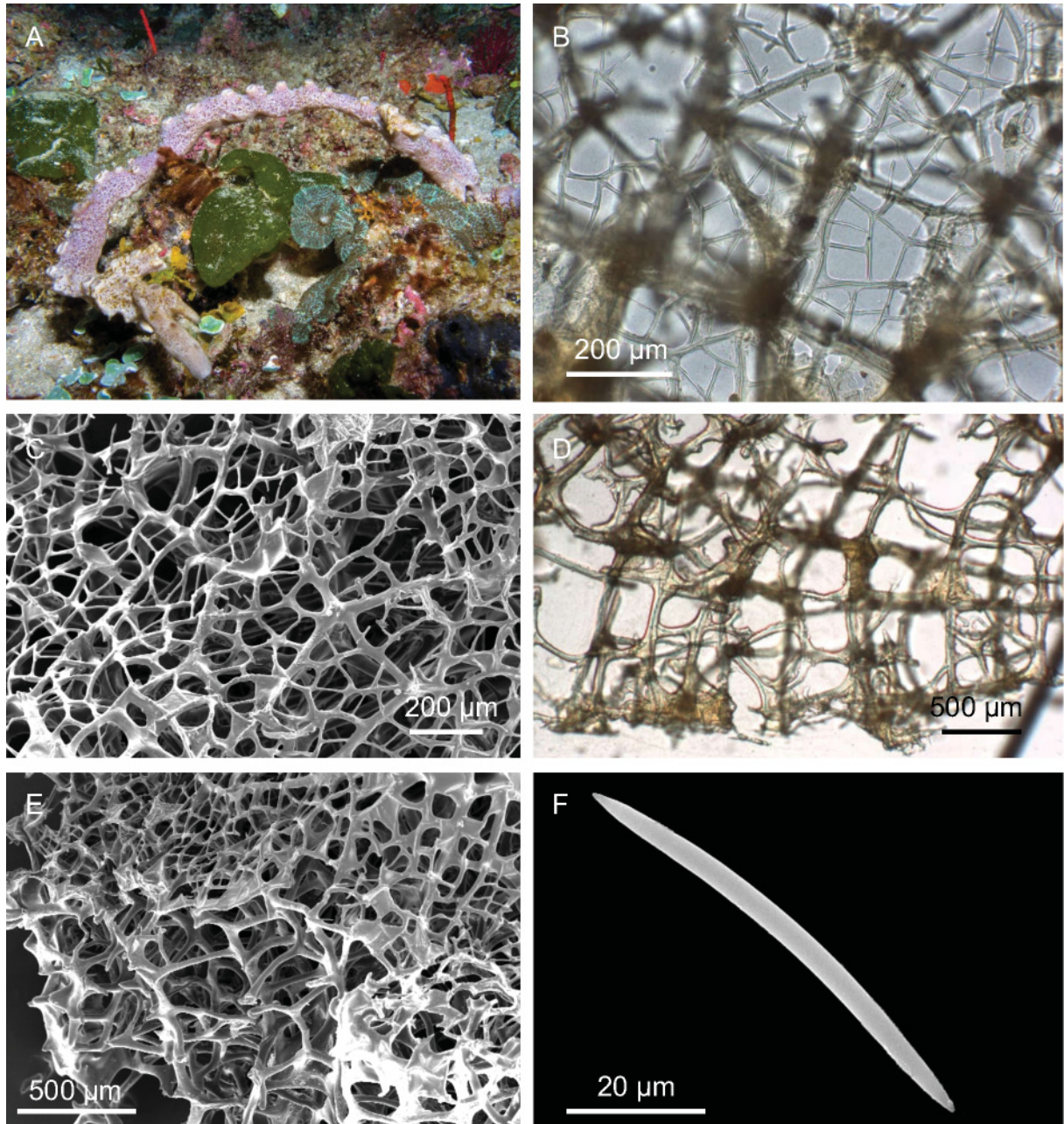


Fig. 8. *Callyspongia (Callyspongia) pulitzeri* Van Soest & Hooper, 2020. **A.** Specimen IMG0827 *in situ*. **B.** Ectosomal skeleton. **C.** SEM picture of the ectosomal skeleton. **D.** Ectosomal skeleton. **E.** SEM picture of the choanosomal skeleton and small portion of the ectosome on the top left of the figure. **F.** Oxea.

Family Niphatidae Van Soest, 1980
Genus *Amphimedon* Duchassaing & Michelotti, 1864

Amphimedon brevispiculifera (Dendy, 1905)

Fig. 9

Pachychalina brevispiculifera Dendy, 1905: 149, pl 10 fig. 7.

Material examined

PONTA DO OURO • 2 branches, about 4 cm long, alcohol preserved; 26°49'55.65" S, 32°53'13.417" E; Three Sisters; 23.9 m deep; 21 Feb. 2017; Cerrano leg.; PO65.

Description

The live sponge is arborescent, with flattened branches often anastomosing (Fig. 9A); oscules are numerous and concentrated on the upper margin of the branches (Fig. 9A). Light purple *in vivo*, the specimen conserved in alcohol is pale yellow; the surface is smooth, the consistence is firm and elastic. The preserved sample consists of two small fragments; the biggest being a small branch about 4 cm long and 1.5 cm thick.

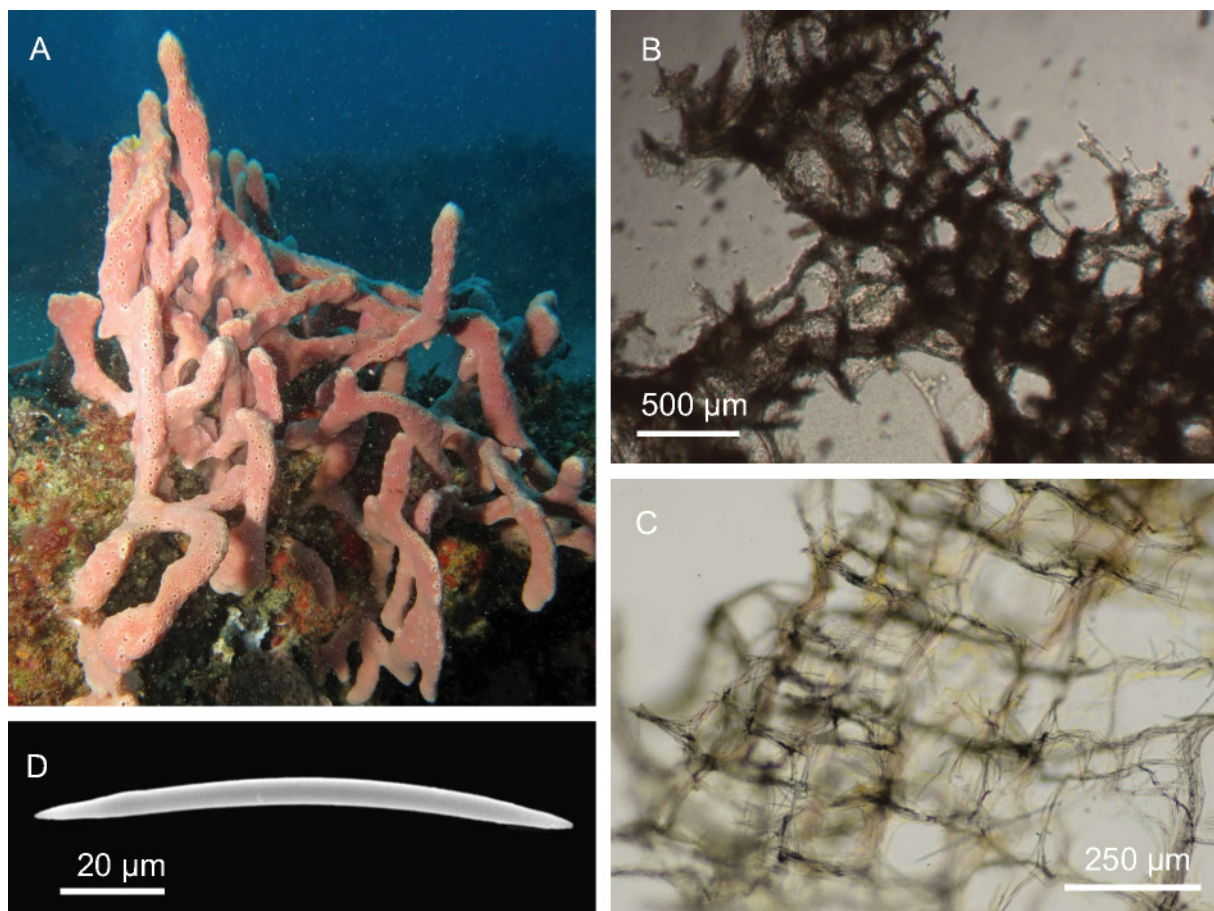


Fig. 9. *Amphimedon brevispiculifera* (Dendy, 1905). **A.** Specimen PO65 *in situ*. **B.** Ectosomal skeleton. **C.** Choanosomal skeleton. **D.** Oxea.

SKELETON. Ectosome (Fig. 9B) formed by multispicular fibers, rich in spongin, with the diameter ranging between 20 and 75 μm , creating irregular, rounded meshes of 100–200 μm . Echinating spicules, at the end of the choanosomal primary fibers, protrude at the nodes. Choanosome (Fig. 9C) consists of multispicular primary fibers as well as multispicular secondary fibers, of about the same thickness (20–90 μm in diameter), forming rectangular meshes (average of $100 \times 175 \mu\text{m}$).

SPICULES. Short, stout and sharp oxeas, $80\text{--}(88.5, 4.4)\text{--}95 \times 2.5\text{--}(2.75, 1.3)\text{--}3 \mu\text{m}$ (Fig. 9D).

Remarks

Out of 57 species of the genus *Amphimedon*, 30 are recorded in the Indo-Pacific Ocean (Van Soest *et al.* 2019). The examined specimen fits with *A. brevispiculifera* described from the Gulf of Manaar. They share the same general morphology, disposition of the oscules and the short dimension of the spicules ($100 \times 5.5 \mu\text{m}$); the species name “*brevispiculifera*” means ‘with short spicules’. All the other species of *Amphimedon* in the Indo-Pacific Ocean are characterized by longer oxeas.

The present specimen is apparently morphologically similar to the sponge recently recorded by Samaai *et al.* (2019) in South Africa and named *Callyspongia (Cladochalina) diffusa* sensu Samaai *et al.* (2019).

This species was previously known only from South India and Sri Lanka (Laccadive Sea); thus, it is the first record since its original description and a new record for the studied area.

Amphimedon palmata Calcinaï & Belfiore sp. nov.

[urn:lsid:zoobank.org:act:3A60B0A0-7705-4C64-96FE-83FF25D1045A](https://zoobank.org/act:3A60B0A0-7705-4C64-96FE-83FF25D1045A)

Fig. 10

Diagnosis

This species of *Amphimedon* is characterized by flattened and rounded branches, and oscules located on the branches’ rims.

Etymology

Named after the sponge growth form, consisting of flat and rounded branches.

Material examined

Holotype

PONTADO OURO • a branched portion, alcohol preserved, 5 cm high; $26^{\circ}49'50.408''\text{S}$, $32^{\circ}53'45.974''\text{E}$; Doodle; 18 m deep; 14 Nov. 2015; Cerrano leg.; MSNG 61504.

Description

Live sponge arborescent-palmate (Fig. 10A), with oscula scattered on the upper margin of the flattened branches (Fig. 10A). The color is pinkish in life; ochre for the fragment preserved in alcohol. The surface is uneven, but optically smooth; the consistence is soft and compressible. The examined sample is a short palmate fragment 0.5–1 cm in thickness.

SKELETON. Ectosome (Fig. 10B) with multispicular primary fibers (40–60 μm in diameter) that form rounded and irregular meshes, 180–250 μm wide, with paucispicular secondary fibers (15 μm in average diameter). In the best-preserved parts, the sponge is covered by a thin dermal membrane with scattered tangential oxeas (Fig. 10C). Choanosomal primary fibres protrude and are pierced by scattered spicules; the ascendants, multispicular primary fibers (35–50 μm in diameter), are linked to plurispicular secondary fibers (20–50 μm in diameter). The meshes are irregular or polygonal (100–300 μm) (Fig. 10D).

SPICULES. Curved oxeas (Fig. 10E), 90–(103.5, 6.5)–112 μm in length and 2.75–(5.3, 0.9)–6.25 μm wide.

Remarks

This species belongs to the genus *Amphimedon* that is characterized by an optically smooth surface, and a regular, tangential, ectosomal network with rounded meshes of a single size. Ends of choanosomal, longitudinal, primary fibers are barely protruding. Spongin is abundant (Desqueyroux-Faúndez & Valentine 2002b).

Out of 57 species of the genus *Amphimedon*, 30 are recorded in the Indo-Pacific Ocean, 13 of which are from the West Indian Ocean (Van Soest *et al.* 2019).

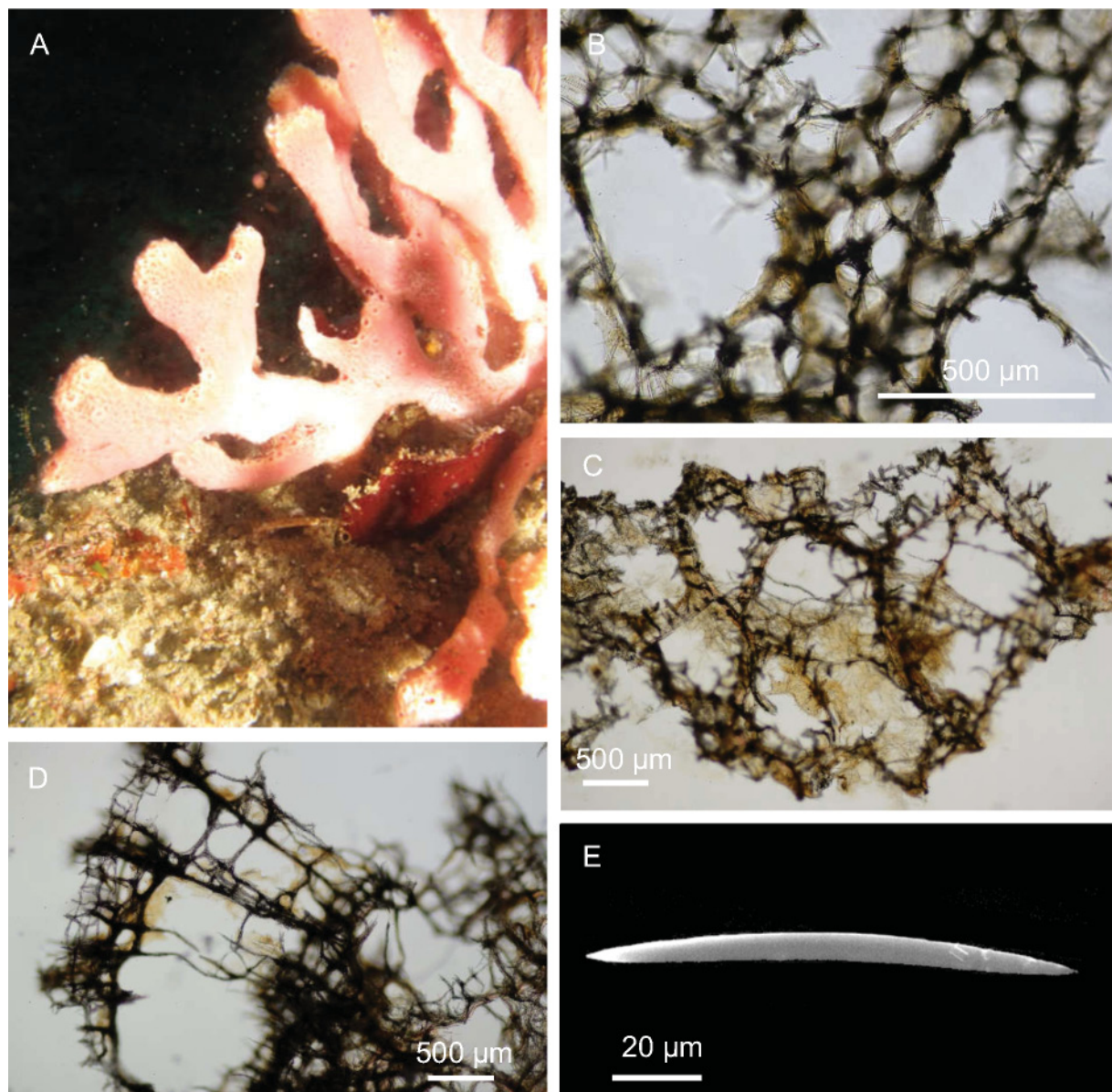


Fig. 10. *Amphimedon palmata* Calcinai & Belfiore sp. nov. **A.** The holotype MSNG 61504 *in situ*. **B.** Ectosomal skeleton. **C.** Ectosomal skeleton covered by a thin dermal membrane with scattered tangential oxeas. **D.** Choanosomal skeleton. **E.** Oxea.

The examined material is close to *A. ochracea* (Keller, 1889) in the fiber, mesh and spicule dimensions; Keller (1889), in fact, reported the main fibers with a thickness of 50 μm , and secondary fibers of 10–15 μm . The mesh sizes are between 0.1 and 0.15 mm. Oxeas are straight and pointed, 100 μm long but thinner (1.5 μm in diameter). The main difference is in the shape, color and general morphology of the sponge. Keller's species is ochraceous and has rounded branches, while the new species is pinkish and has flattened branches; in *A. ochracea* the large oscules are star-shaped and located along the branches, not on the rims. *Amphimedon brevispiculifera* (Dendy, 1905), as described above, is purple and has a different skeleton structure. The other species of the area, *A. chloros* Ilan, Gugel & Van Soest, 2004, *A. dinae* Helmy & Van Soest, 2005, *A. hamadai* Helmy & Van Soest, 2005, *A. hispidula* (Ridley, 1884), *A. jalaie* Helmy & Van Soest, 2005, *A. navalis* Pulitzer-Finali, 1993, *A. rubida* Pulitzer-Finali, 1993, *A. rubiginosa* Pulitzer-Finali, 1993 and *A. spinosa* Pulitzer-Finali, 1993, show a morphology from encrusting to cylindrical, never arborescent or palmate as the specimen here described. *Amphimedon delicatula* (Dendy, 1889), recorded from Sri Lanka, has a similar shape ("bushily lamellar"), but presents very stout choanosomal primary fibers, 126 μm in diameter. *Amphimedon subcilindrica* (Dendy, 1905) is described as a cylindrical, repent-ramose sponge but with bigger oxeas (140 \times 8 μm) and different choanosomal skeleton (stout primary fibers, up to 66 μm , and sub-rectangular meshes). All the other species are different either in spicule size, color or growth form.

Based on the peculiar morphological features of *A. palmata* sp. nov. and on the morphological differences with all the other species, *A. palmata* sp. nov. is considered a new species of the genus *Amphimedon*.

Family Phloeodictyidae Carter, 1882

Genus *Oceanapia* Norman, 1869

***Oceanapia ramsayi* (Lendenfeld, 1888)**

Fig. 11

Rhizochalina ramsayi Lendenfeld, 1888: 188, pl. 3.

Material examined

PONTA DO OURO • 1 dried fragment of about 6 \times 1.5 \times 2 cm; 26°49'17.512" S, 32°53'42.5" E; Kev's; 17 m deep; 20 Nov. 2015; Cerrano leg.; PdO27 • 1 small fragment of about 3 \times 1 \times 1 cm; 26°49'17.512" S, 32°53'42.503" E; Kev's; 17 m deep; 20 Nov. 2015; Cerrano leg.; PdO28.

Description

Live sponge globular-massive, with oscular tubes arising from the upper surface (Fig. 11A–C). The two specimens had distinct colors in life: bright red on the exterior and yellow inside (Fig. 11A–B), and dark brown on the exterior and light brown inside (Fig. 11C). Both dried samples are dark brown, firm and with a smooth surface.

SKELETON. Ectosome (Fig. 11D) constituted of a reticulation of fibers, 30–100 μm in section, forming oval meshes of 350–400 μm of diameters and a secondary sub-isodictyal network of single oxeas. Choanosome formed by thick fibers of spicules, 30–50 μm in section, forming irregularly rounded meshes, 180–380 μm .

SPICULES. Slightly curved oxeas (Fig. 11E), 130–(156.7, 11.7)–170 \times 2.5–(6.2, 1.7)–10 μm , often with slightly mucronate tips.

Remarks

The samples belong to the genus *Oceanapia* Norman, 1869, considering the numerous fistulae on the surface and the general skeleton structure. The genus includes 95 species, 75 of them from the Indo-Pacific Ocean (Santos Neto *et al.* 2018). The skeleton, spicule size and general morphology fit the original description of *Oceanapia ramsayi* Lendenfeld, 1888 from Australia. The holotype was described

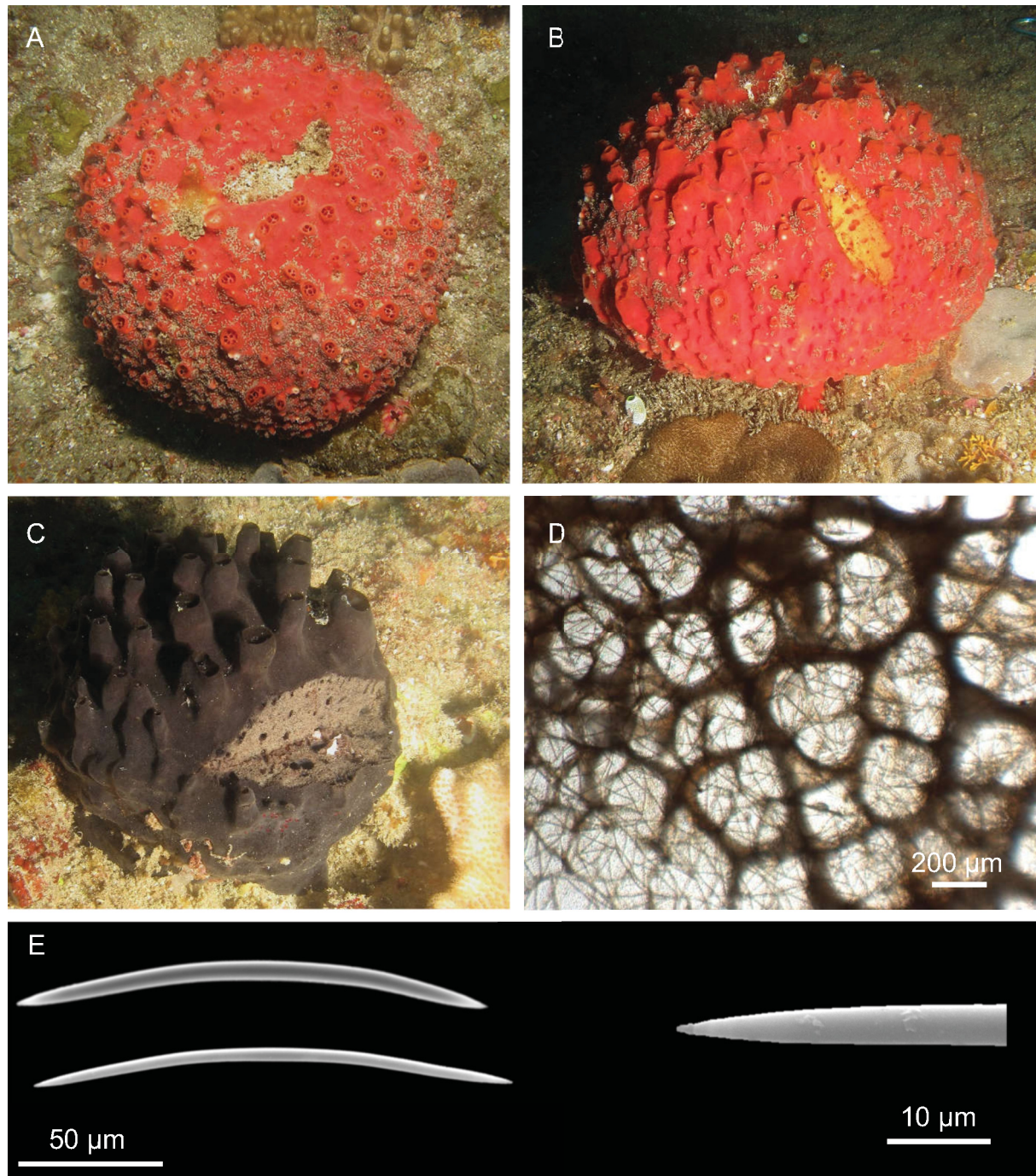


Fig. 11. *Oceanapia ramsayi* Lendenfeld, 1888. **A–B.** Red specimen *in situ* (PdO27); in B a fresh cut highlights the yellow choanosome. **C.** Brown specimen (PdO28). **D.** Choanosomal skeleton. **E.** Oxeas and magnification of a tip.

as yellow, while other, subsequent records of this species report a red color, such as in Itampolo, Madagascar (Bensemhoun *et al.* 2008) and brown in Port Jackson, Australia (Hallman 1914). Moreover, Hallman pointed out that his specimen, different from the holotype, was devoid of stout, central tubes, although it occurs with the examined material from Mozambique. The species is also known from the east coast of South Africa (Schleyer *et al.* 2006).

Order Axinellida Lévi, 1953
Family Heteroxyidae Dendy, 1905
Genus *Myrmekioderma* Ehlers, 1870

***Myrmekioderma granulatum* (Esper, 1829)**

Fig. 12

Alcyonium granulatum Esper, 1829: 71, pl. 24.

Material examined

PONTA DO OURO • 1 fragment 3 × 2 × 1 cm; 26°49'50.408" S, 32°53'45.97" E; Doodle; 17.6 m deep; 20 Apr. 2017; Cerrano leg.; PO98.

Description

Live sponge massive, bulbous, partially burrowing (Fig. 12A) and with the surface covered by large, circular, low, rounded plates, similar to flat tubercles. Color bright orange, while the tubercles are dark-red, brownish colored (Fig. 12A); the sample preserved in alcohol is beige. The sponge is fleshy and compressible. The surface appears smooth, but is micro-hispid at microscope magnification.

SKELETON. Ectosome composed of brushes of densely packed spicules (Fig. 12B). Choanosome constituted by a lax skeleton of ascending fibers of oxeas (Fig. 12B).

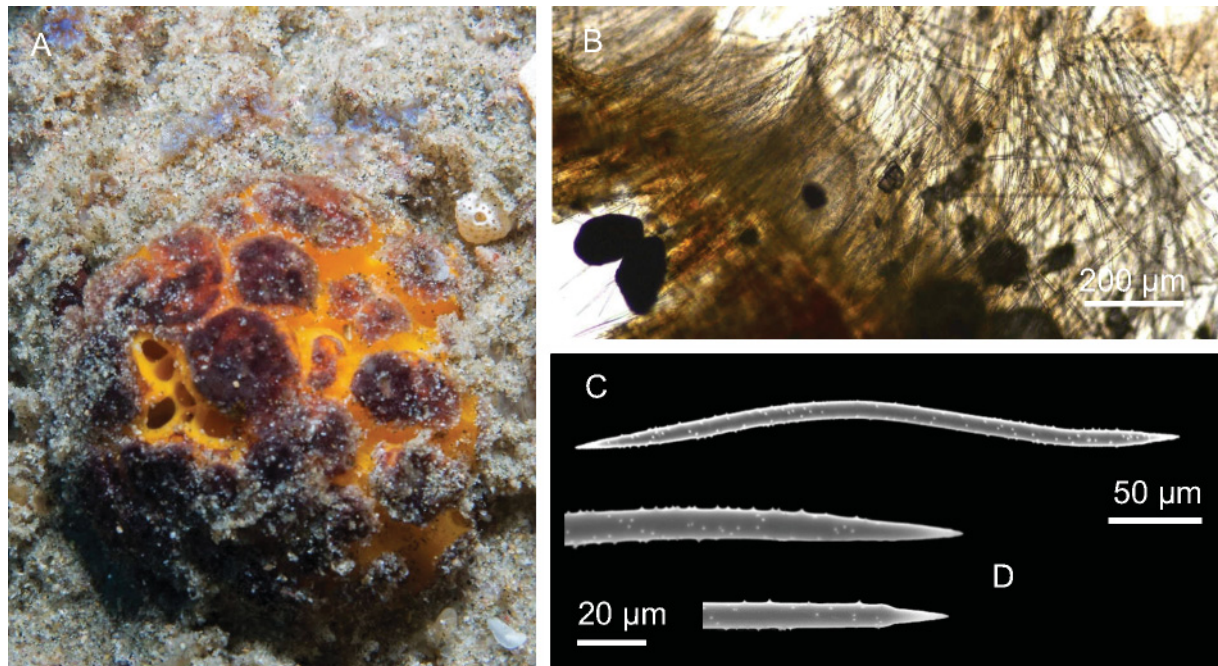


Fig. 12. *Myrmekioderma granulatum* (Esper, 1829). **A.** Specimen PO98 *in situ*. **B.** Ectosomal skeleton. **C.** Microspined and flexuous oxea. **D.** Magnifications of the tips.

SPICULES. Oxeas microspined, slightly curved or flexuous (Fig. 12C), $260\text{--}(415, 176.6)\text{--}840\text{ }\mu\text{m} \times 7.5\text{--}(10, 2)\text{--}12.5\text{ }\mu\text{m}$, tips acerate or stepped (Fig. 12D); less common, smooth oxeas with same characteristics; very thin rhabds, in thricodragmas, on the surface $22.5\text{--}(29.25)\text{--}50\text{ }\mu\text{m}$.

Remarks

The specimen belongs to the genus *Myrmekioderma* Elhers, 1870 characterized by a halichondroid organization of the choanosomal skeleton, a detachable ectosomal skeleton of acanthoxeas and by the presence of trichodragmata on the surface (Hooper 2002).

To date, there are 11 species belonging to this genus, six of which have records only in the Atlantic Ocean (Van Soest *et al.* 2019). Among the others, *Myrmekioderma niveum* (Row, 1911) presents a yellowish-white color and has just one category of smooth oxeas. *Myrmekioderma dendyi* (Burton, 1959) was recorded from Madagascar (Van Soest *et al.* 2019), but is characterized by an even surface with some digitate processes. *Myrmekioderma pacificum* Pulitzer-Finali, 1996 from the Bismark Sea has smooth and thicker oxeas ($7\text{--}45\text{ }\mu\text{m}$) with, sometimes, strongylote modifications (never found in this specimen) and longer trichodragmata ($100\text{--}130\text{ }\mu\text{m}$). *Myrmekioderma tuberculatum* (Keller, 1891), found in the Red Sea, has a different morphology and the spicule composition is different, with the absence of trichodragmata and the presence of strongylote modifications.

The very peculiar external morphology, with the rounded plates and the oxea shape, fit the descriptions of *Myrmekioderma granulatum* (Esper, 1829). This species has a wide distribution in the Indian and Pacific Ocean (Van Soest *et al.* 2019), with a corresponding high degree of variability, even concerning the presence or the absence of some spicule category (Bergquist 1965).

Order Tetractinellida Marshall, 1876
Family Theonellidae Lendenfelds, 1903
Genus *Theonella* Gray, 1868

Theonella conica (Kieschnick, 1896)
Fig. 13, Table 1

Discodermia conica Kieschnick, 1896: 530.

Material examined

PONTA DO OURO • 2 fragments, the larger is about $8 \times 3 \times 2\text{ cm}$; $26^{\circ}49'17.512''\text{ S}$, $32^{\circ}53'42.507''\text{ E}$; Kev's; 23.4 m deep; 3 Feb. 2017; Cerrano leg.; PO2 • 1 fragment, $4 \times 2 \times 1\text{ cm}$; $26^{\circ}47'34.8''\text{ S}$, $32^{\circ}53'57.662''\text{ E}$; Close; 18.6 m deep; 9 Feb. 2017; Cerrano leg.; PO29.

Description

The live sponge is irregularly massive, lobate, with oscules either flush with the surface or opening upon mounds (Fig. 13A–C). The color of the surface is brown while the body is blueish. The samples preserved in alcohol are ochre with an uneven surface, in some parts microhispid. The consistence is firm and slightly compressible.

SKELETON. Ectosome consisting of phyllotriaenes and with a crust of numerous rhabds (Fig. 13D–E). Choanosome formed by tetraclone desmas and brushes of strongyles (Fig. 13F).

SPICULES. Phyllotriaenes (Fig. 13D) with short clads $40\text{--}(57.5)\text{--}87\text{ }\mu\text{m}$ ($n = 8$) and desmas quite rare; smooth and slightly curved strongyles (Fig. 13G) $315\text{--}(385, 54.3)\text{--}417\text{ }\mu\text{m} \times 2.5\text{--}(3.25, 2.2)\text{--}7\text{ }\mu\text{m}$, sometimes modified in oxeas; rhabds (Fig. 13H) are straight with oxeote ends and long spines $7\text{--}(9.5)\text{--}14\text{ }\mu\text{m}$.

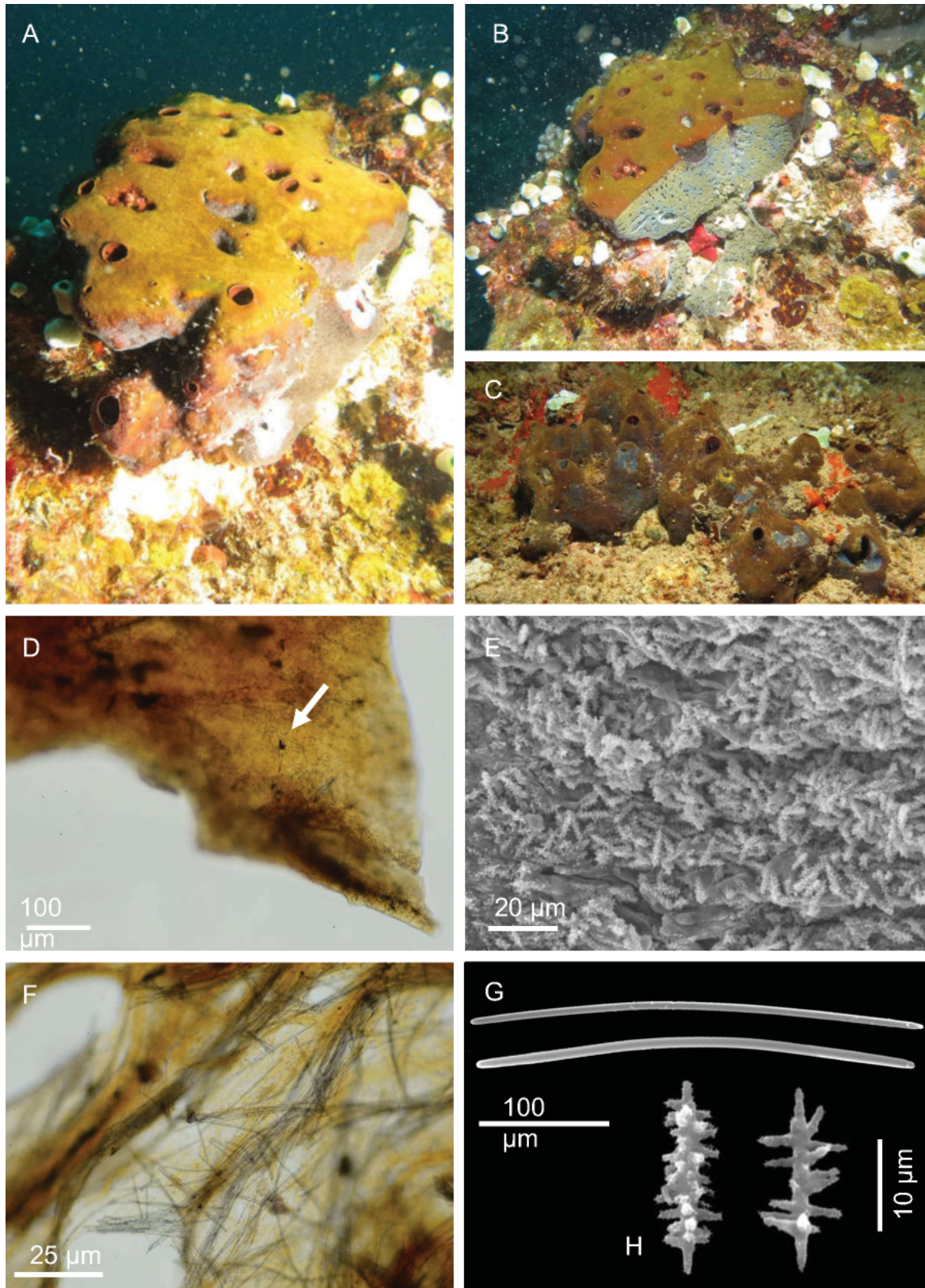


Fig. 13. *Theonella conica* (Kieschnick, 1896). **A–B.** The specimen PO2 *in situ*; in B a fresh cut highlights the blue colored choanosome. **C.** The specimen PO29 *in situ*. **D.** Ectosome with phyllotriaene (arrow) and rhabds. **E.** Crust of rhabds (SEM). **F.** Choanosomal skeleton. **G.** Strongyles. **H.** Straight rhabds.

Table 1 (continued on next page). Characteristics of the species of *Theonella* Gray 1868. The description of *Theonella ferruginea* Haeckel in Zittel, 1878 is not available (Van Soest *et al.* 2019).

Species	Distribution	Shape	Megascleres	Size (µm)	Microscleres	Size (µm)	Desmas and phyllotriaenes
<i>T. annulata</i> Lendenfeld, 1907	Morocco	–	–	–	Slightly curved acanthorhabds	30	Phyllotriaenes, tetracelone desmas with tubercles
<i>T. atlantica</i> Van Soest & Stentoft, 1988	Florida/Caribbean	Encrusting/Lobate	–	–	Straight acanthorhabds	8–15 × 2	Dichotraene-like phyllotriaenes, desmas
<i>T. complicata</i> (Carter, 1880)	Seychelles	Massive irregular	Oxeas/strongyles/ styles	90 × 5, 120 × 5, 120 × 5	–	–	Phyllotriaenes
<i>T. conica</i> (Kieschnick, 1896)	Red Sea/Indonesia/ Madagascar	Massive	Oxeas/strongyles	275–550	Acanthorhabds	10	Phyllotriaenes, tetracrepid desmas
<i>T. cupola</i> (Burton, 1928)	India	Dome shaped massive	Oxeas	44	Rhabds “with well-developed spines”	19	Phyllotriaenes, desmas with tubercles
<i>T. cylindrica</i> Wilson, 1925	Philippines	Cylindrical massive	Strongyles	600 × 5	Microspined rhabds rounded at the ends	8 × 3	Smooth phyllotriaenes, desmas
<i>T. deliqua</i> Hall, Ekins & Hooper, 2014	Australia	Encrusting/Massive	–	–	Microxeas slender, slightly curved, tips sharply hastate, covered by numerous, narrow, conical spines	7.2–(14.6)– 21.6 × 2.5–3.4	
<i>T. ferruginea</i> Haeckel in Zittel, 1878			No information				
<i>T. incerta</i> Thiele, 1900	Indonesia	Vasiform	Strongyles	150	Microhabds “with rougher surface”	10 × 8	Phyllotriaenes with several shapes, desmas
<i>T. invaginata</i> Wilson, 1925	Philippines	Vasiform	Strongyles	420 × 6	Acanthorhabds, oxeate or strongly late ends	420 × 6	Smooth phyllotriaenes, desmas with tubercles
<i>T. lacerata</i> Lendenfeld, 1907	Red Sea/Indonesia	Cylindrical massive	Oxeas	400–630	Cylindrical rhabds	16–24 × 1.5–4	Smooth phyllotriaenes, dicranoclonones
<i>T. laena</i> Lim & Tan, 2016	Singapore	Encrusting	Strongyles	600–630	slightly curved acanthose strongyloxeas	13–27	Phyllotriaenes, desmas with tubercles

Table 1 (continued). Characteristics of the species of *Theonella* Gray 1868.

Species	Distribution	Shape	Megascleres	Size (µm)	Microscleres	Size (µm)	Desmas and phyllostriaenes
<i>T. levior</i> Lendenfeld, 1907	Australia	Cylindrical massive	Oxeas/strongyles	500–770	Cylindrical and slightly thinned	15–30 × 2–4	Smooth phyllostriaenes
<i>T. maricae</i> Hall, Ekins & Hooper, 2014	Australia	Encrusting	–	–	microxeas slightly curved, with conical spines	37.5	
<i>T. mirabilis</i> (de Laubenfels, 1954)	Central Pacific	Irregular massive	Strongyles	400 × 7	Straight microhabds	12 × 2	
<i>T. pulchrifolia</i> Dendy, 1922	Maldives	Lamellar	2 sizes oxeas	57 × 3, 140 × 3	Microhabds	–	Phyllostriaenes, tetracrepis desmas
<i>T. swinhoet</i> Gray, 1868	Indian Ocean	Cylindrical massive	Strongyles	325–600	Rhabds	6–23	Smooth phyllostriaenes, desmas with tubercles
<i>T. timmi</i> Samaai, Pillay & Janson, 2019	West Indian Ocean	Massive conical to columnar	Strongyles/oxeas	316–(410)–593	Slightly curved acanthorhabds	16–(17)–19	Tetracrepis desmas smooth, various size of phyllostriaenes
<i>T. wrightae</i> Pisera & Pomponi 2015	Gulf of Mexico	Digitate/Lobate	–	–	Straight and microspined microhabds	9–20	Phyllostriaenes, discotriaenes, tetracrepis desmas
<i>T. xantha</i> (Sutcliffe, Hooper & Pitcher, 2010)	Australia	Encrusting	–	–	Straight microhabds densely spined	14.7	

Remarks

The samples fall in the genus *Theonella* Lendenfeld, 1903 due to the presence of phyllotriaenes in the ectosome and the microscleres constituted by acanthorhabds.

To date, 20 species belong to the genus, three of which have records in the Atlantic Ocean (Table 1), while for *Theonella ferruginea* Haeckel in Zittel, 1878 the type locality is unknown (Van Soest *et al.* 2019).

Theonella deliqua Hall, Ekins & Hooper, 2014, *T. maricae* Hall, Ekins & Hooper, 2014 and *T. xantha* (Sutcliffe, Hooper & Pitcher, 2010) are devoid of megascleres. *Theonella lacerata* Lendenfeld, 1907, *T. cupola* Burton, 1928 and *T. pulchrifolia* Dendy, 1922 differ from our samples because their megascleres are strictly oxeas. *Theonella cylindrica* Wilson, 1925, *T. levior* Lendenfeld, 1907 and *T. laena* Lim & Tan, 2016 have longer strongyles (respectively 600, 500–770 and 600–630 µm long) while *T. incerta* Thiele, 1900 and *T. complicata* (Carter, 1880) have shorter strongyles (respectively 150 and 90–120 µm long). *Theonella invaginata* Wilson, 1925, differs in the morphology (vasiform) and in the presence of microrhabds often with oxeate ends. *Theonella swinhoei* Gray, 1868 differs in its curved microrhabds and in the rounded extremity (often swollen) of the diactinal megascleres (tylotes) with respect to the straight ones in *T. conica*. Also, *T. mirabilis* (de Laubenfels, 1954), from the Marshall Islands, has straight acanthorhabds but a “dull carmine red” ectosome, microtuberculated surface and calthrops-like tetracane desmas. In *T. timmi* Samaai, Pillay & Janson, 2019, the microrhabds are bent.

The original description of *T. conica* is concise and no spicule measurements are given; the species was described from Halmahera, Indonesia, but records in the Indian Ocean and Red Sea are numerous (Van Soest *et al.* 2019). The material examined fits with the published descriptions of this species. In particular *T. conica* is described by Ilan *et al.* (2004) with strongyles, but no tylotes, and with straight acanthorhabds. They also underlined that the color of the internal part of this species is deep blue. Moreover, Lévi (1958) described *T. conica* from the Red Sea with spicules, fitting in shape and size with the present samples. In the examined specimens, very few desmas have been detected; they can be considered as rare spicules, not always produced by the sponge, as Thiele (1900) reported these spicules as being not numerous and scattered.

On the sample PO2, the hydroid *Sphaerocoryne* sp. (Class Hydrozoa, Phylum Cnidaria) was detected.

Theonella timmi Samaai, Pillay & Janson, 2019
Fig. 14, Table 1

Theonella timmi Samaai, Pillay & Janson, 2019: 25, fig. 9a–g.

Material examined

PONTA DO OURO • 1 fragment, irregular in shape, about 12×6×3 cm, light blue; 26°49'29.579" S, 32°53'51.072" E; Blacks; 18 m deep; 13 Nov. 2015; Cerrano leg.; PdO17 • 1 rounded, brown fragment of about 4 cm; 26°45'41.04" S, 32°54'7.144" E; Texas; 11 m deep; 15 Nov. 2015; Cerrano leg.; PdO23 • 1 flat fragment brown in color, about 8×5×1 cm; 26°49'50.408" S, 32°53'45.974" E; Doodles; 18 Nov. 2015; 18 m deep; Cerrano leg.; PdO26 • 2 flat, bluish fragments alcohol preserved, 2 fragments preserved dry; 26°50'36.881" S, 32°54'54.471" E; Atlantis; 6 Feb. 2017; 40.7 m deep; Cerrano leg.; PO18 • several dried (bluish) and alcohol preserved fragments; 26°50'36.881" S, 32°54'54.475" E; Atlantis; 6 Feb. 2017; 40.7 m deep; Cerrano leg.; PO19 • 1 small fragment of a few millimetres; 26°49'17.512" S, 32°53'42.5" E; Kev's; 11 Feb. 2017; 22.4 m deep; Cerrano leg.; PO34 • small fragments; 26°49'17.512" S, 32°53'42.503" E; Kev's; 11 Feb. 2017; 22.4 m deep; Cerrano leg.; PO35 • small fragments; 26°49'17.512" S, 32°53'42.507" E; Kev's; 11 Feb. 2017; 22.4 m deep; Cerrano leg.; PO36 • very small fragment of a few millimetres; 26°49'19.119" S, 32°54'9.82" E; Green bubbles; 17 Mar. 2017; 41.5 m deep; Cerrano leg.; PO88.

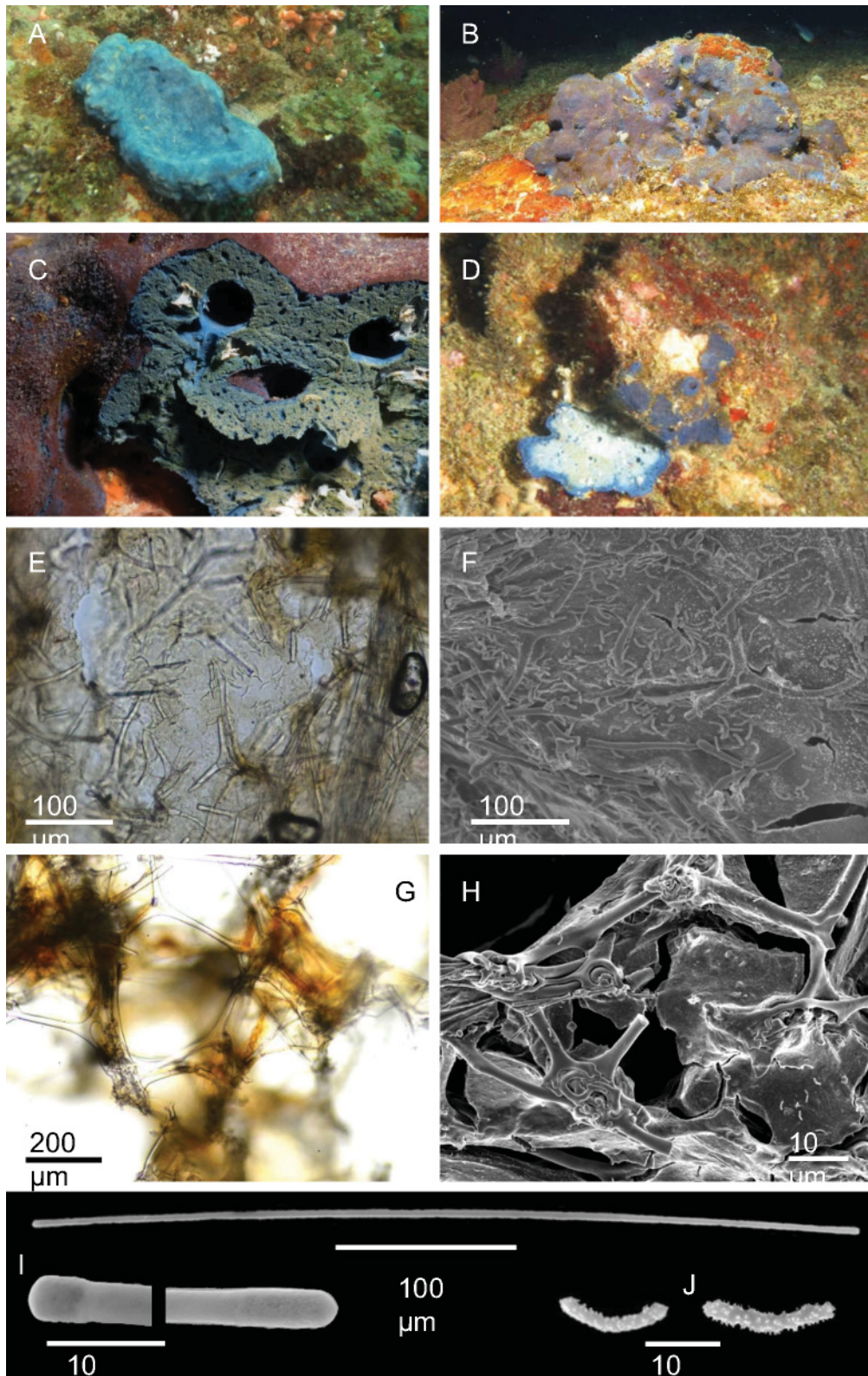


Fig. 14. *Theonella timmi* Samaai *et al.* 2019. A–D. The specimens PdO17, PO18, PO36 and PO19, respectively, *in situ*. E. Ectosome with phyllotriaenes and rhabds. F. Ectosomal skeleton with phyllotriaenes and rhabds (SEM). G. Tetraclone desmas of the choanosome. H. Tetraclone desmas of the choanosome (SEM). I. Strongyle and magnification of the tips. J. Bent rhabds.

Description

Live sponge irregularly massive (Fig. 14 A–D). Color from light or vivid blue to brown; the surface is often covered by epibionths which hide the superficial sponge color. The samples preserved in alcohol are beige with a greenish shade. The surface is uneven, the consistence is tough and uncompressible.

SKELETON. Ectosome consisting of phyllostriaenes and strongyles organized in a layer with numerous rhabds (Fig. 14E–F). Choanosome formed by tetraclone desmas and brushes of strongyles (Fig. 14G–H).

SPICULES. Phyllostriaenes 80–(139.1)–185 μm (Fig. 14E–F); desmas tuberculate and with rounded tips 125–(201.6)–300 \times 15–20 μm (Fig. 14G–H); smooth and slightly curved strongyles (Fig. 14I), 275–(355, 77.2)–530 $\mu\text{m} \times$ 4. 8–(6.25, 1.3)–8 μm , often with slightly enlarged extremities; rhabds (Fig. 14J) are straight or bent in the middle and microspined, 8–(14.5)–19 μm .

Remarks

This sponge is widespread in the studied area; it fits with the species *Theonella timmi* as recently described by Samaai *et al.* (2019) from South Africa for its blue color, both interior and exterior, and for the shape and size of its spicules.

Order Clionaida Morrow & Cárdenas, 2015
Family Clionaidae d’Orbigny, 1851
Genus *Cliona* Grant, 1826

Cliona grandis Samaai, Pillay & Janson, 2019
Fig. 15

Cliona grandis Samaai, Pillay & Janson, 2019: 12, fig. 3a–g.

Material examined

PONTADO OURO • 1 rounded fragment of about 3 cm, preserved dry; 26°46'39.864" S, 32°55'25.392" E; Cloud break; 36 m deep; 22 May 2015; Torsani leg.; IMG0830 • 1 small flat, rounded portion, preserved dry, of about 3 cm; 26°49'29.579" S, 32°53'50.819" E; Blacks; 18 m deep; 24 May 2015; Torsani leg.; IMG0913 • 5 fragments, preserved dry; the larger about 5 \times 2 \times 2 cm; 26°49'29.579" S, 32°53'50.819" E; Blacks; 17 m deep; 11 Nov. 2015; Cerrano leg.; PdO2 • 1 rounded fragment of 5 cm preserved dry; 26°45'41.04" S, 32°54'7.138" E; Texas; 11 m deep; 15 Nov. 2015; Cerrano leg.; PdO19 • 1 single fragment 5 \times 3 \times 2 cm, preserved dry; 26°49'50.408" S, 32°53'45.974" E; Texas; 11 m deep; 15 Nov. 2015; Cerrano leg.; PdO22 • 3 fragments alcohol preserved; 26°45'41.04" S, 32°54'7.141" E; Doodles; 17 m deep; 7 Feb. 2017; Cerrano leg.; PO22 • dried and alcohol preserved fragments; 26°49'50.408" S, 32°53'45.977" E; Doodles; 17 m deep; 7 Feb. 2017; Cerrano leg.; PO23 • 3 alcohol preserved fragments, the larger about 7 \times 3 \times 1 cm; 26°49'50.408" S, 32°53'57.659" E; Close; 18.6 m deep; 9 Feb. 2017; Cerrano leg.; PO27 • very small fragments, alcohol preserved; 26°49'55.65" S, 32°53'13.413" E; Three sisters; 23.9 m deep; 21 Feb. 2017; Cerrano leg.; PO64.

Description

Sponge in encrusting stage (β) (IMG0830, PdO19, PdO22, PO22, PO23 and PO64) and massive stage (γ) (IMG0913 and PO23). Two main chromatic varieties, shifting from ochre to orange (Fig. 15A–B) to pale or light yellow (Fig. 15C–D). Specimens, dried and alcohol preserved, are brown in color. The consistence of the papillae and of the γ -stage forms is firm and incompressible. The body of the γ -stage is cavernous. The sponges in the γ -stage are full of foreign material, also derived by their erosion and engulfing activity.

SKELETON. In the papillae, long and slim tylostyles are organized in palisade, in other parts the skeleton is more confused.

SPICULES. Tylostyles (Fig. 15E) with a prominent head (Fig. 15F); in numerous tylostyles the axial canal and the vesicle in the tylo are evident. They measure $295\text{--}(307.87)\text{--}345\text{ }\mu\text{m} \times 2.5\text{--}(6.7)\text{--}7.5\text{ }\mu\text{m}$.

Remarks

This species was recently described by Samaai *et al.* (2019) from South Africa; it is widespread in the studied area where it develops a sort of biogenic fence up to 50 cm high.

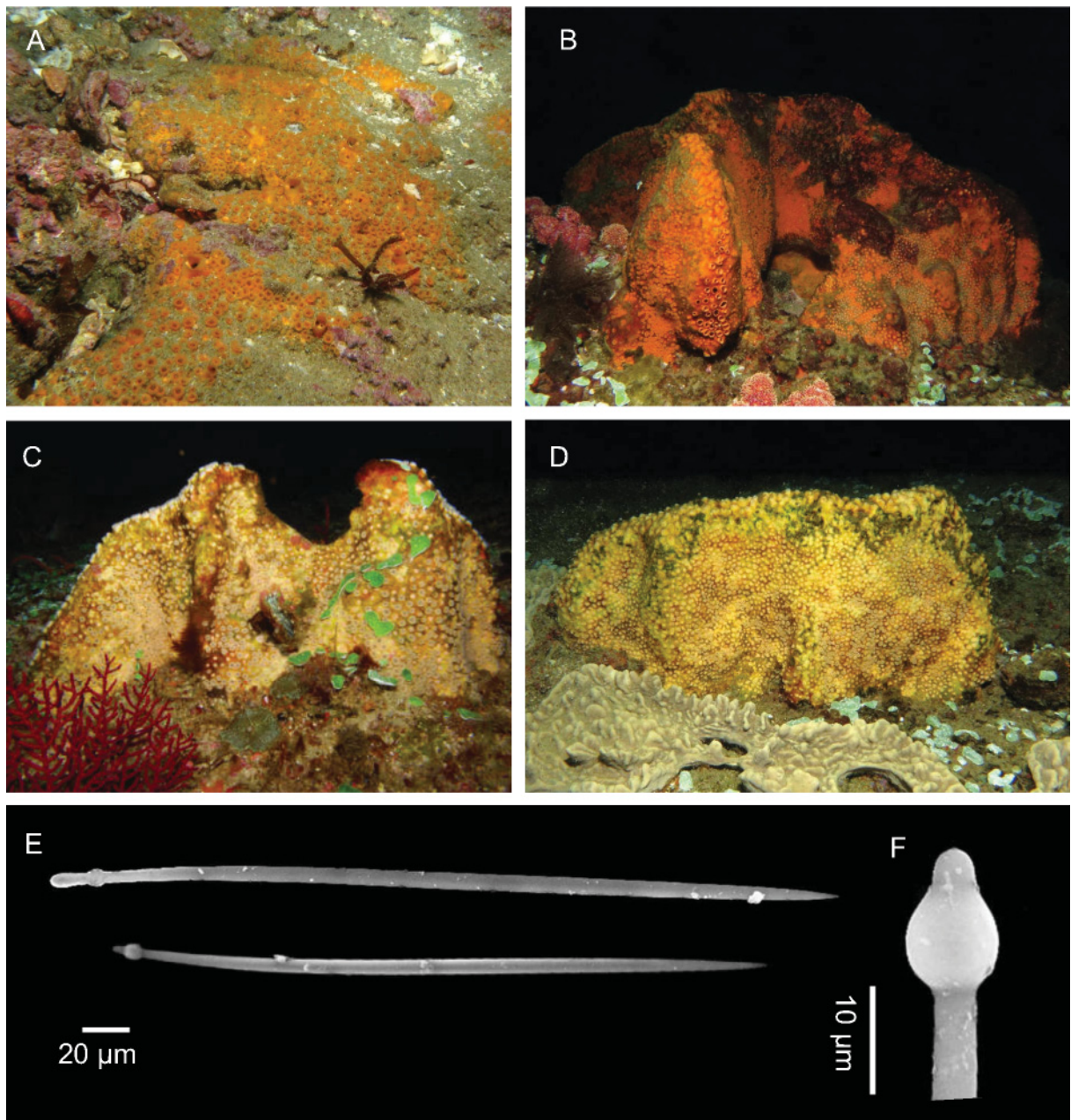


Fig. 15. *Cliona grandis* Samaai *et al.*, 2019. **A.** Sponge in encrusting stage (β), PO64. **B–D.** Sponges in massive stage (γ), respectively PO22, IMG830 and PO27. **E.** Tylostyles. **F.** Magnification of the tylostyle head.

Genus *Spheciospongia* Marshall, 1892

Spheciospongia ndabazithe Samaai, Pillay & Janson, 2019

Fig. 16

Spheciospongia ndabazithe Samaai, Pillay & Janson, 2019: 19, fig. 6a–g.

Material examined

PONTA DO OURO • 1 portion of 7×3×1 cm; 26°46'38.829" S, 32°54'17.384" E; Waynes; 40.6 m deep; 17 Feb. 2017; Cerrano leg.; PO52.

Description

Massive sponge (Fig. 16A–B), cup-shaped, light beige in the external and darker in the internal side. The alcohol preserved fragment is hard and incompressible, with a grey surface and a compact darker body.

SKELETON. Ectosome and choanosome confused, rich in sediments.

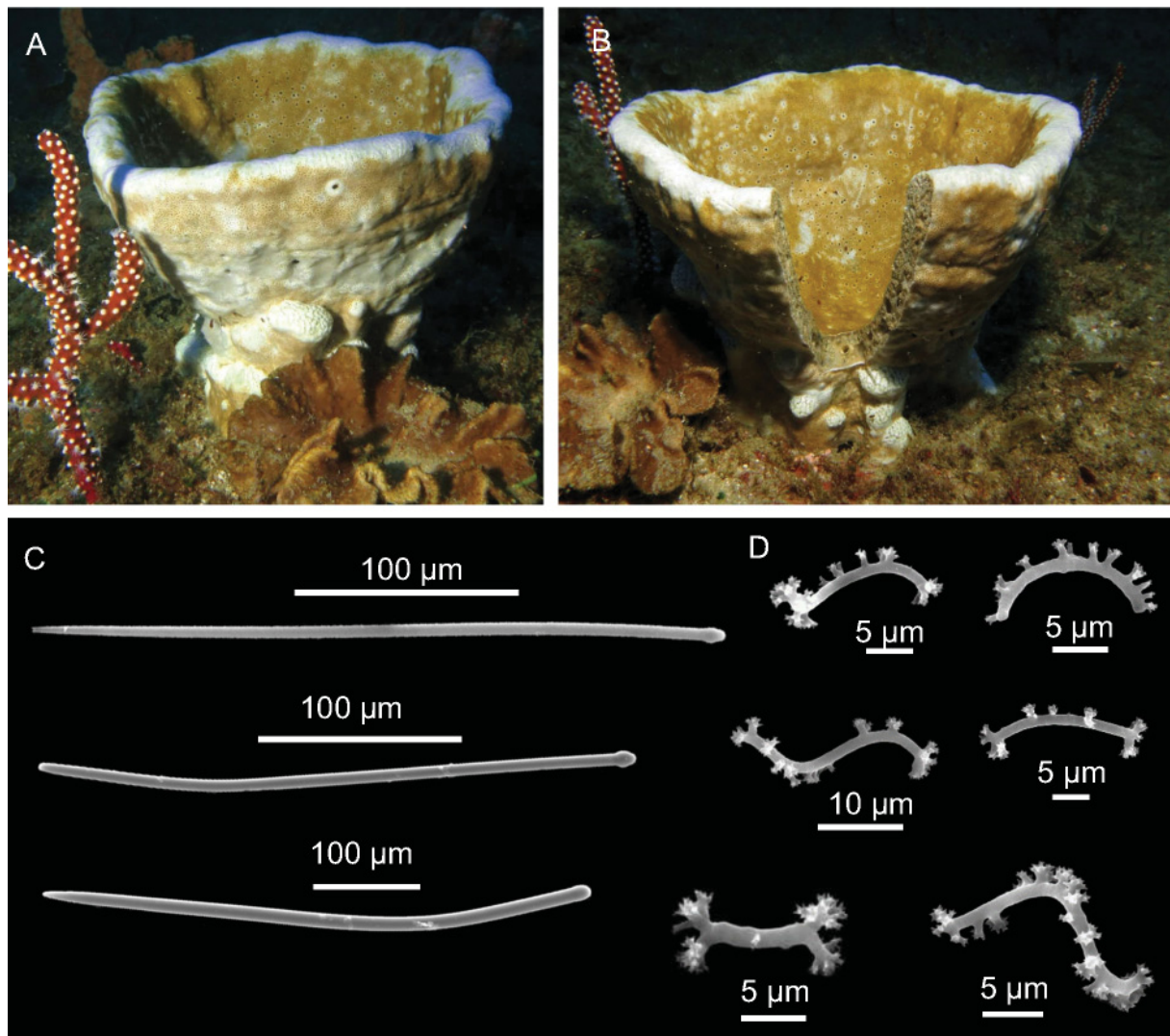


Fig. 16. *Spheciospongia ndabazithe* Samaai *et al.*, 2019. **A.** Specimen PO52 *in situ*. **B.** The cut highlights the compact, darker choanosome. **C.** Tylostyles in different shapes. **D.** Spirasters variable in shapes.

SPICULES. Slim tylostyles sometimes curved towards the pointed tip (Fig. 16C), $250\text{--}(332)\text{--}410\ \mu\text{m} \times 4\text{--}(7.3)\text{--}10\ \mu\text{m}$ wide; sometimes they are modified in curved styles with acerate tips (Fig. 16C); spirasters variable in shapes (Fig. 16D) with an average length of $12.5\ \mu\text{m}$: C-shaped with many spines along the convex side, straight and smooth with groups of spines at the extremities and longer, S-shaped spirasters with spines scattered along the axis.

Remarks

Our specimen perfectly fits the species recently described from South Africa by Samaai *et al.* (2019), with the exception of a larger variety of spirasters present in the specimen from Punta do Ouro.

Spheciospongia vagabunda (Ridley, 1884)

Fig. 17

Spirastrella vagabunda Ridley, 1884: 468, pl. 43 figs e, e'.

Material examined

PONTA DO OURO • 1 small portion, preserved dry; Blacks; 18 m deep; 13 Nov. 2015; Torsani leg.; PdO14.

Description

The sample, preserved dry, is a fragment collected from a sponge in the γ -stage (Fig. 17A); this and other observed specimens, very common in the area, are attached by a broad base, with one or more large

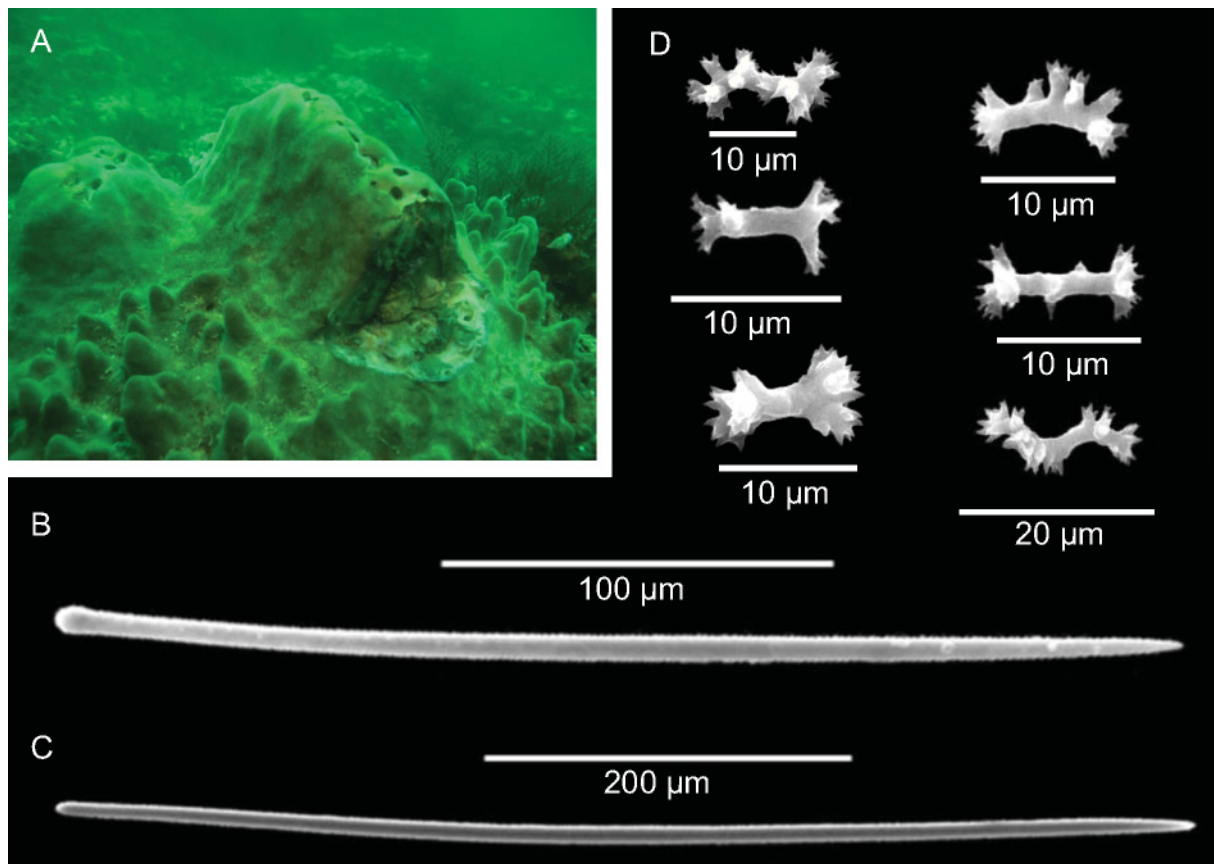


Fig. 17. *Spheciospongia vagabunda* (Ridley, 1884). A. Specimen PdO14 *in situ*. B. Big style. C. Small style. D. Spirasters.

vents and numerous digitate protuberances; it is brown, with a smooth surface and a cavernous body; the consistence is tough and incompressible.

SKELETON. In the papillae, tylostyles are organized in palisade, in other parts the skeleton is more confused.

SPICULES. Big and straight styles (Fig. 17B), $450\text{--}(536.8, 48.8)\text{--}620 \times 9\text{--}(10.7, 1.5)\text{--}13 \mu\text{m}$, rare tylostyles with slightly pointed tips; smaller styles (Fig. 17C), $240\text{--}(284.3, 30.3)\text{--}310 \mu\text{m} \times 5\text{--}(5.7, 1.3)\text{--}8 \mu\text{m}$, with acerate tips and, sometimes, tylostyle modifications; spirasters (Fig. 17D) are stout, with average length of $12.5 \mu\text{m}$ and in several shapes: straight with spines at the extremities (amphiasters like), S-shaped wrapped with spines and slightly curved C-shaped spirasters.

Remarks

This species is widely distributed in the Indo-Pacific Ocean. Already recorded in the area (Pulitzer-Finali 1993; Barnes & Bell 2002; Samaai *et al.* 2019).

Order Poecilosclerida Topsent, 1928
Family Chondropsidae Carter, 1886
Genus *Chondropsis* Carter, 1886

Chondropsis lamella (Lendenfeld, 1888)
Fig. 18, Table 2

Phoriospongia lamella Lendenfeld, 1888: 194.

Material examined

PONTA DO OURO • several fragments in alcohol, the larger $4 \times 2 \text{ cm}$ and 8 mm thick; $26^{\circ}49'50.408'' \text{ S}$, $32^{\circ}53'45.977'' \text{ E}$; Doodle; 18 m deep; 14 Nov. 2015; Torsani leg.; PdO18c • 1 fragment, preserved dry, $6 \times 3 \times 2 \text{ cm}$; $26^{\circ}47'34.8'' \text{ S}$, $32^{\circ}53'57.668'' \text{ E}$; Close; 9 Feb. 2017; 18.6 m deep; Cerrano leg.; PO32 • 3 fragments, in alcohol, the larger about $3.5 \times 3 \times 2 \text{ cm}$; $26^{\circ}47'34.8'' \text{ S}$, $32^{\circ}53'57.671'' \text{ E}$; Close; 9 Feb. 2017; 18.6 m deep; Cerrano leg.; PO33 • 3 small fragments about 1 cm^3 ; $26^{\circ}49'55.65'' \text{ S}$ $32^{\circ}53'52.982'' \text{ E}$; Tea Garden; 19.7 m deep; 6 Mar. 2017; Cerrano leg.; PO79.

Description

The sponge is lamellate, erect or massive (Fig. 18A–C). Oscules visible in the live specimens are small, slightly elevated and transparent (Fig. 18B). The sponge is brownish-orange in color and has an areolate surface (Fig. 18A). The samples preserved in alcohol are dark brown and have a stone-like consistence, but are friable and maintain the areolate surface; the abundant presence of sediment is clearly evident.

SKELETON. The ectosome and the choanosome are almost completely made by columns of grains, with brushes of spicules close to the surface.

SPICULES. Thin strongyles (Fig. 18D) with sometimes blunted tips (Fig. 18E), $90\text{--}(123.5, 15.3)\text{--}150 \mu\text{m} \times 3\text{--}(4.75, 1)\text{--}6.5 \mu\text{m}$; C-shaped sigmas of two sizes (Fig. 18F): $40\text{--}55 \mu\text{m}$ and $20\text{--}25 \mu\text{m}$.

Remarks

The examined material fits the original description of *Chondropsis lamella* (Lendenfeld, 1888) from Australia; only the color is different: brownish-orange in the examined samples, instead of greyish-pink; this difference may be due to the nature of the foreign bodies used by the sponge in very large quantity to build its skeleton. *Chondropsis lamella* has an Indo-Pacific distribution (Van Soest *et al.* 2019) and has already been recorded in this area (Vacelet *et al.* 1976). Species characteristics of the genus *Chondropsis* Carter, 1886 from the original descriptions are resumed in Table 2. *Chondropsis*

isimangaliso was recently described by Samaai *et al.* (2019) from eastern South Africa; it is similar in its external morphology to the specimens here described, but it differs in having a single category of sigmas.

On the sample PO79, the hydroid *Zyzyzus warreni* Calder, 1988 (Class Hydrozoa, Phylum Cnidaria) was detected.

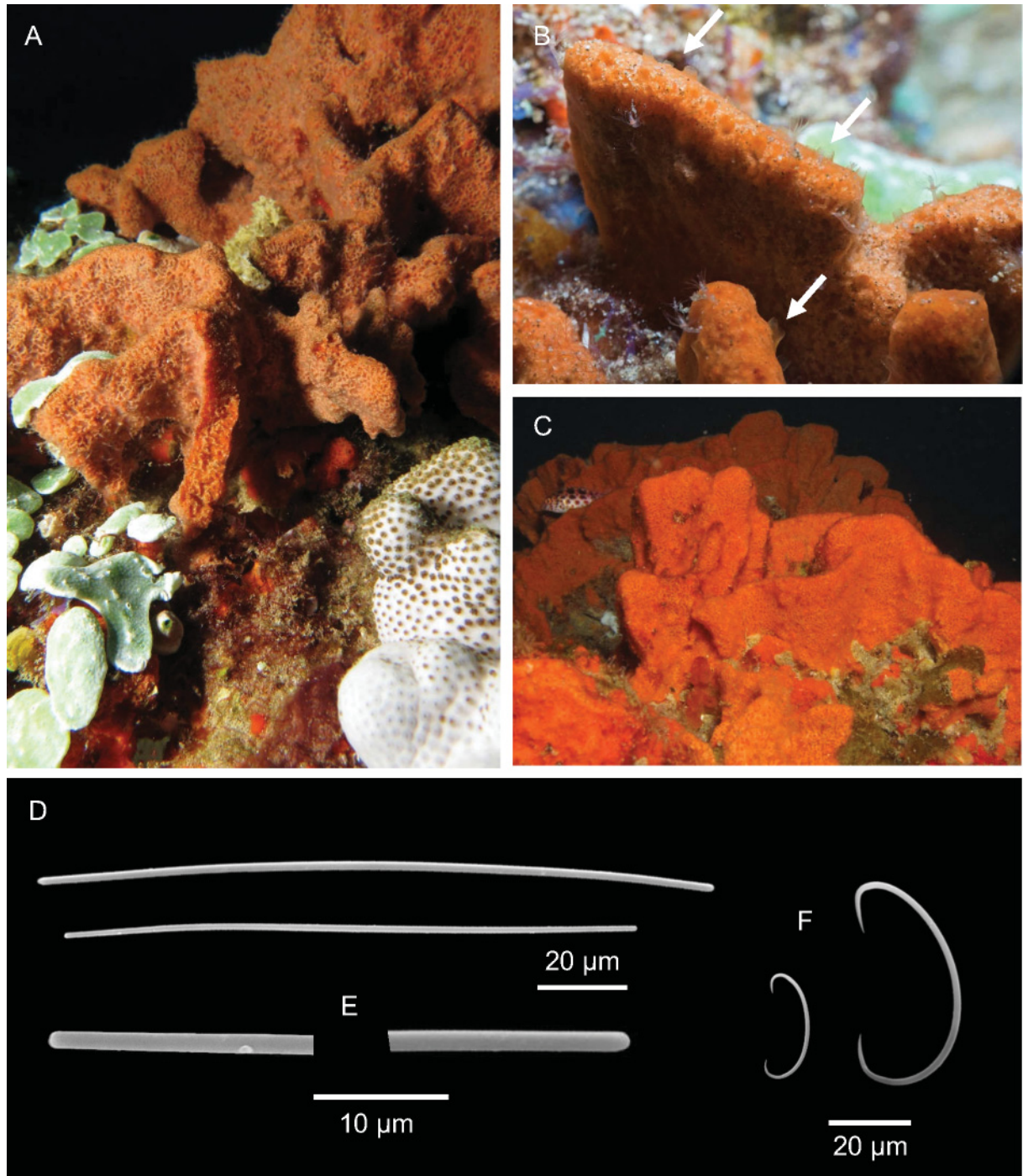


Fig. 18. *Chondropsis lamella* (Lendenfeld, 1888). A–C. Specimens *in situ*, respectively PO32, PO79 and PdO18c; in B the arrows point the slightly elevated oscules. D. Strongyles. E. Magnifications of the tips. F. Sigmas.

Table 2. Species of the genus *Chondropsis* Carter, 1886; characteristics based on the original and later descriptions.

Species	Author	Distribution	Shape	Megascleres	Size (µm)	Microscleres	Size (µm)
<i>C. arenacea</i>	(Dendy, 1917)	Australia	Massive	Strongyles	220 × 2.5	Sigmas	–
<i>C. arenifera</i>	Carter, 1886	Australia	Massive	Strongyles	160–190 × 1–2	–	–
<i>C. australis</i>	(Lendenfeld, 1888)	Australia	Massive	Strongyles	160–193 × 2–3	Isochelae; sigmas	10–17; 20–30
<i>C. ceratosus</i>	Kirkpatrick, 1900	Pacific	Encrusting	Strongyles	120 × 2	Sigmas	30–50
<i>C. chaliniformis</i>	(Lendenfeld, 1889)	Australia	Branching-lobate	Strongyles	180 × 2	Sigmas	50
<i>C. columnifera</i>	Dendy, 1895	Australia	Massive	Strongyles	140 × 2	No	–
<i>C. confederata</i>	(Lamarck, 1814)	Australia	Massive	Strongyles	140–160 × 1–3	No	–
<i>C. isimangaliso</i>	Samaai <i>et al.</i> 2019	South Africa	Encrusting/massive	Strongyles	129 (119–138) × 2 (2)	C-shaped sigmas	52 (43–59)
<i>C. kirkii</i>	(Bowerbank, 1841)	Australia	Encrusting/massive	Strongyles	170 × 3–4	Sigmas	5
<i>C. lamella</i>	(Lendenfeld, 1888)	Madagascar, Australia	Lamellar	Strongyles	100 × 3	Two sizes of sigmas	10 and 47
<i>C. macropsamma</i>	(Lendenfeld, 1888)	Australia	Flabellate	Strongyles	260 × 3	–	–
<i>C. subtilis</i>	Calcinaï <i>et al.</i> 2013	Indonesia	Encrusting/massive	Strongyles	142.5–180 × 2	C- and S-shaped sigmas	13.5–18.5
<i>C. topsenti</i>	Dendy, 1895	Australia	Massive	Strongyles	140 × 2	–	–
<i>C. wilsoni</i>	Dendy, 1895	Australia	Massive	Strongyles/tylotes	180 × 2.5	C-shaped sigmas	16

Genus *Phoriospongia* Marshall, 1880

Phoriospongia mozambiquensis Calcinai & Belfiore sp. nov.

[urn:lsid:zoobank.org:act:95AFED42-6EA0-471E-95BE-B805C4A31B27](https://zoobank.org/act:95AFED42-6EA0-471E-95BE-B805C4A31B27)

Fig. 19, Table 3

Diagnosis

A red species of *Phoriospongia* characterized by styles with stepped tips, C and S-shaped sigmas, and isochelae.

Etymology

The specific name is derived from type locality.

Material examined

Holotype

PONTA DO OURO • fragment about $2 \times 2 \times 2$ cm; $26^{\circ}49'50.408''$ S, $32^{\circ}53'45.97''$ E; Doodle; 17 m deep; 7 Feb. 2017; Cerrano leg.; MSNG 61420.

Description

The live sponge (Fig. 19A) is irregularly massive, bright red and covered by algal turf. The fragment preserved in alcohol changed the color to grey, with an uneven surface. It is very hard and friable and rich in sediments.

SKELETON. The ectosome and the choanosome are almost completely constituted by columns of grains, with scattered spicules among the foreign bodies.

SPICULES. Styles (Fig. 19B–C) with stepped tips, 260 –(294.5 , 24.2)– 340 $\mu\text{m} \times 2.5$ –(2.8 , 0.8)– 5 μm ; C- and S-shaped sigmas (Fig 19D), 28 –(37.2)– 42 μm ; arcuate isochelae (Fig. 19E), 9 –(12.5)– 14 μm .

Remarks

This sponge belongs to the genus *Phoriospongia*, which is characterized by “skeletal columns cored by styles and foreign material [...] sigmas usually present” (Van Soest 2002).

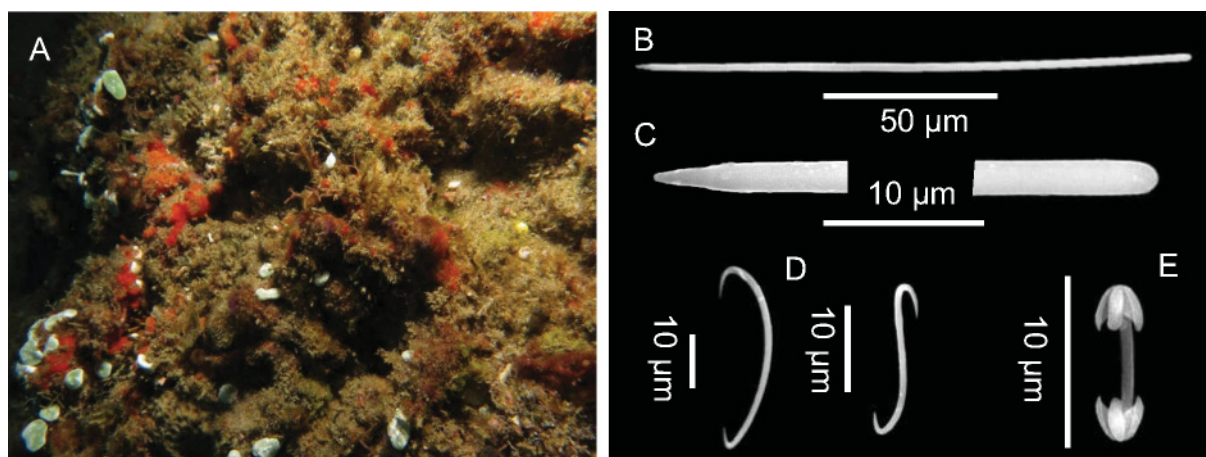


Fig. 19. *Phoriospongia mozambiquensis* Calcinai & Belfiore sp. nov. **A.** The holotype MSNG 61420 *in situ*. **B.** Style. **C.** Magnifications of the tips. **D.** C- and S-shaped sigmas. **E.** Arcuate isochela.

Table 3. Species of the genus *Phoriospongia* Marshall, 1880; characteristics based on the original descriptions.

Species	Author	Distribution	Shape	Megascleres	Size (µm)	Microscleres	Size (µm)
<i>P. arenifibrosa</i>	(Dendy, 1896)	Australia	–	“Broken”	“Not measured”	Isochelae	16
<i>P. argentea</i>	(Marshall, 1880)	Australia	Massive	Styles	80	–	–
<i>P. caniculata</i>	Lendenfeld, 1889	Australia	–	Oxeas	160 × 4	Sigmas	47
<i>P. carcinophila</i>	(Lendenfeld, 1889)	Australia	–	Two sizes of strongyles	200 × 1 and 200 × 2	–	–
<i>P. flabellopalmata</i>	(Carter, 1885)	Australia	–	Styles	270 × 4	Raphids	–
<i>P. levis</i>	Lendenfeld, 1888	Australia	–	Strongyles	100 × 1	Sigmas	30
<i>P. mammilata</i>	(Lendenfeld, 1888)	Australia	–	Strongyles	250 × 6	–	–
<i>P. papillosa</i>	(Lamarck, 1815)	Australia	–	No macroscleres	–	–	–
<i>P. poni</i>	(de Laubenfels, 1950)	Hawaii	–	Strongyles; oxeas; styles	90 × 5; 120 × 5; 120 × 5	Raphids	90 × 0.5
<i>P. reticulum</i>	Marshall, 1880	Australia	–	Tylostyles	–	Sigmas	50
<i>P. solida</i>	Marshall, 1880	Australia	Massive	Tylostyles	200–300	Sigmas	40
<i>P. squalida</i>	(Lendenfeld, 1888)	Australia	–	–	–	–	–
<i>P. syringiana</i>	(Whitelegge, 1906)	Australia	Branching	Strongyles	130–150 × 5.5	Sigmas, chelae	“Various”

The genus *Phoriospongia* Marshall, 1880 includes 13 species, all with an Indo-Pacific Ocean distribution, mainly from Australia (Van Soest *et al.* 2019). Due to the nature of the skeleton and to the capacity of the sponge to incorporate foreign bodies, it is difficult to clearly detect the skeleton organization, and most of the original descriptions are inadequate (Table 3). *Phoriospongia arenifibrosa* (Dendy, 1896) differs from this new species due to the absence of megascleres and to the morphology (erect, palmo-digitate sponge). *Phoriospongia argentea* (Marshall, 1880) has shorter styles (80 μm) and does not have any microscleres. *Phoriospongia canaliculata* Lendenfeld, 1889 has oxeas instead of styles. *Phoriospongia reticulum* (Marshall, 1880) and *P. solida* Marshall, 1880 differ in the possession of tylostyles. *Phoriospongia flabellipalmata* (Carter, 1885) shows a smooth and even surface, with longer styles and raphides as microscleres. *Phoriospongia carcinophila* (Lendenfeld, 1889), *P. levis* Lendenfeld, 1888, *P. mammillata* (Lendenfeld, 1888) and *P. syringiana* (Whitelegge, 1906) have different megascleres, i.e., strongyles instead of styles. The description of *P. papillosa* (Lamarck, 1815) is inadequate and neither megascleres nor microscleres are reported. *Phoriospongia poni* (De Laubenfeld, 1950), described from the Hawaii Islands, has three kinds of megascleres, i.e., oxeas, strongyles and styles. In the original description, *P. squalida* Lendenfeld, 1888, spicules are not described and, moreover, the sponge is reported as erect and tubular.

Considering the affinities between *Phoriospongia* and *Chondropsis*, the species of the latter genus have been used for a comparison, but none was found to fit the new species from Mozambique (Table 2).

Family Iotrochotidae Dendy, 1922

Genus *Iotrochota* Ridley, 1884

Iotrochota cf. sinki Samaai Pillay & Janson, 2019

Fig. 20

Iotrochota sinki Samaai *et al.* 2019: 40, fig. 16a–g.

Material examined

PONTA DO OURO • 3 fragments about 1 cm^3 ; 26°46'55.65" S, 32°54'13.41" E; Three Sisters; 24.2 m deep; 22 Mar. 2017; Cerrano leg.; PO85 • 1 single fragment 4.5 \times 2 \times 1 cm; 26°49'17.512" S, 32°53'42.5" E; Kev's; 26.2 m deep; 22 Apr. 2017; Cerrano leg.; PO100.

Description

Sponge massively encrusting or massive (Fig. 20A–B). On the surface, the exhalant system is evident as a vein-like pattern converging on the oscula (Fig. 20B). The color is yellow, mottled with brick red patches (Fig. 20A–B). In alcohol, the sponge changes its color to brown. Where the ectosome is preserved, the surface is smooth and the areolate surface still evident. The consistence is firm and incompressible.

SKELETON. The ectosome consists of a layer of compact smooth styles, easily detachable. The choanosome presents a reticulum of multispicular primary fibers, between 70 and 150 μm , with meshes up to 300 μm , and secondary multispicular fibers, 30–50 μm in section, with smooth, interstitial styles.

SPICULES. Styles (Fig. 20C), 140–(167, 14.8)–195 $\mu\text{m} \times$ 5–(6.1, 0.8)–7.5 μm , bent in the proximal part, closer to the head, the tips acerate or mucronate; thin and straight styles (Fig. 20D) 220–(232.5, 7.7)–245 $\mu\text{m} \times$ 3–(4.5, 0.6)–5 μm ; less common and slightly curved, strongyles (Fig. 20E) 150–(170)–190 $\mu\text{m} \times$ 5–(6.5)–8 μm ; birotulas (Fig. 20F) 12–(16, 1.3)–17 μm .

Remarks

The specimens belong to the genus *Iotrochota* Ridley, 1884, due to the structure of the choanosome with multispicular fibers and the presence of two different kinds of megascleres and birotulas. It comprises 15 species, with nine spread in the Indo-Pacific Ocean. *Iotrochota nigra* (Baer, 1906) was recorded in the same geographic area (East Africa), but differs in morphology and color, and, above all, in the absence of birotulas. *Iotrochota baculifera* Rildley, 1884 and *I. purpurea* (Bowerbank, 1875) are from the West Pacific Ocean, *I. pella* (de Laubenfels, 1954) and *I. iota* (de Laubenfels, 1954) are from Micronesia, *I. protea* (de Laubenfels, 1950) is from Hawaii, *I. membranacea* (Esper, 1794) is recorded in the East Pacific Ocean, *I. coccinea* (Carter, 1886) is from Australia. All these species are massive, dark violet-black colored and differ from the Mozambican specimens in spicule sizes and morphology. *Iotrochota sinki*, recently described by Samaai *et al.* (2019) from South Africa, perfectly matches the specimens from Mozambique, especially in the external morphology. Some differences are in the megascleres, as in *I. sinki*, styles in three size classes are recognized, and strongyles (that are considered rare) are longer ($168\text{--}281 \times 4\text{ }\mu\text{m}$).

The species here described fits the description of *Iotrochota birotulata* (Higgin, 1877), recorded many times in the Caribbean Sea and in Brazil (Van Soest *et al.* 2019), in the general external morphology

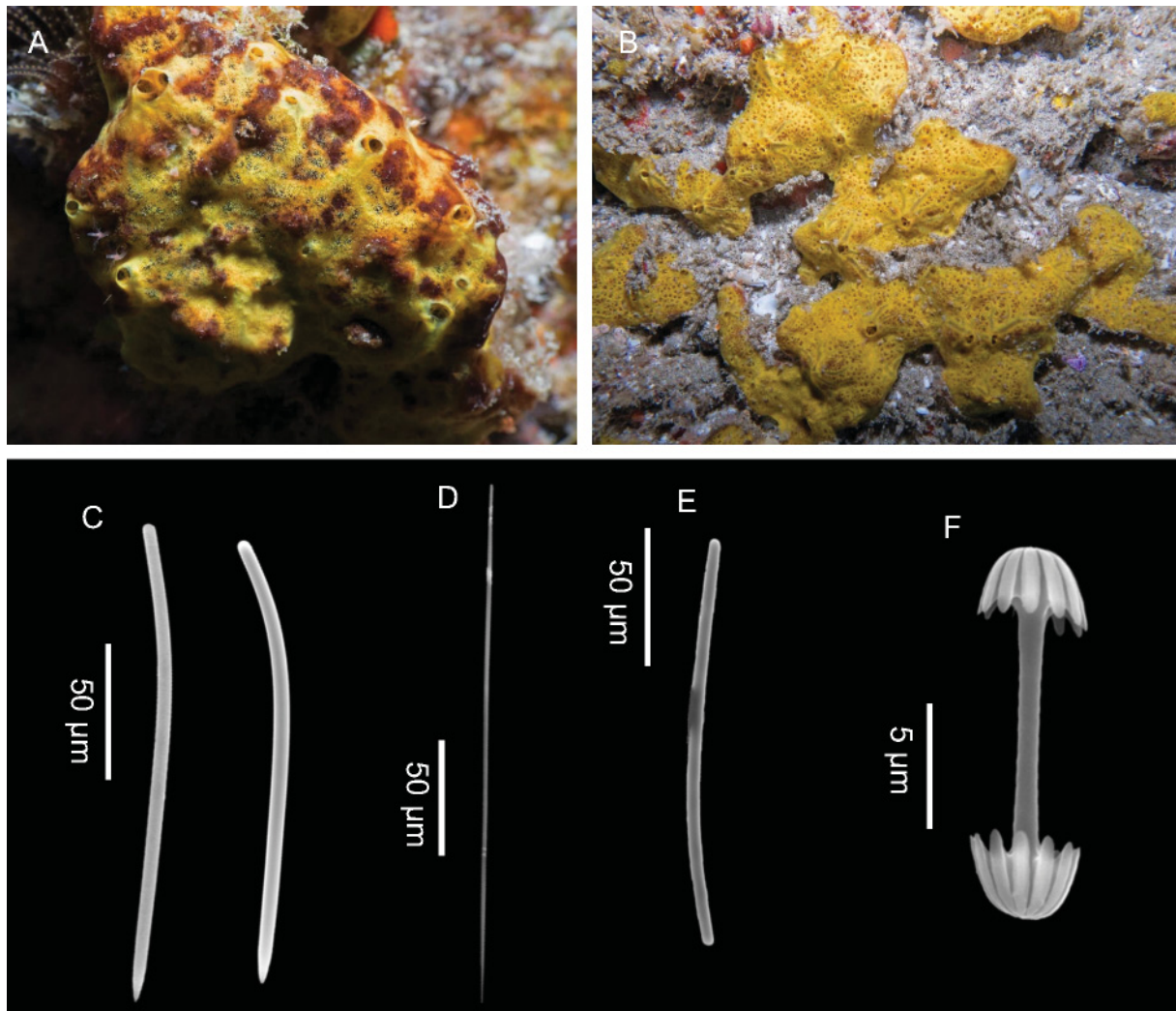


Fig. 20. *Iotrochota* cf. *sinki* Samaai *et al.* 2019. **A–B.** Massive (PO85) and encrusting (PO100) specimens *in situ*. **C.** Styles. **D.** Thin and straight style. **E.** Slightly curved strongyle. **F.** Birotula.

and its spicule features. *Iotrochota birotulata* shows a highly variable morphology, often erect, and is dark purple colored. The Mozambican specimens are characterized by the presence of two kind of styles (typical of the species of this genus) and strongyles are intermingled throughout the sponge; even the spicule dimensions fit those of the type species *I. birotulata*. Considering the disjunct geographic distribution of this record with respect to *I. birotulata*, it is convenient to identify the Mozambican species as *Iotrochota* cf. *sinki* Samaai *et al.* 2019 pending further molecular studies that could clarify its cryptogenic nature. The specimen PO85 (Fig. 20A) is in association with *Zyzyzus warreni* Calder, 1988 (Class Hydrozoa, Phylum Cnidaria).

Family Microcionidae Carter, 1875

Genus *Clathria* Schmidt, 1862

Clathria (*Thalysias*) Duchassaing & Michelotti, 1864

Clathria (*Thalysias*) *hirsuta* Hooper & Levi, 1993

Fig. 21

Clathria hirsuta Hooper & Levi, 1993: 1259, figs 19–20.

Material examined

PONTADO OURO • 1 very small sample covering a hydroid; 26°49'29.579" S, 32°53'51.072" E; Blacks; 19.2 m deep; 4 Feb. 2017; Cerrano leg.; PO10 • 1 small fragment; 26°49'16.561" S, 32°53'52.979" E; Tea Garden; 19.7 m deep; 6 Mar. 2017; Cerrano leg.; PO78.

Description

The sponge is massive (Fig. 21A–B), digitiform and arborescent (Fig. 21C). The exhalant channels converge in numerous, large oscula (Fig. 21A–B). The color may vary from bright orange to vivid red (Fig. 21 A–C). Both samples preserved in alcohol changed their color to beige. The surface is verrucose and the consistence is elastic.

SKELETON. The ectosome consists of a layer of small styles. The choanosome is formed by an irregular reticulation from pauci- to multispicular primary fibers, 52–73 μm in section, and secondary unispicular fibers, 24–41 μm . Both are spongin rich and are cored by smooth styles. Echinating acanthostyles are present on the primary fibers (Fig. 21D).

SPICULES. Smooth and straight styles (Fig. 21E), sometimes modified in subtylostyles, 82.5–(93.25, 11.8)–137.5 $\mu\text{m} \times 4$ –(5.2, 0.7)–6 μm ; smooth and slightly curved styles (Fig. 21F), 70–(109.5, 23.4)–147 $\mu\text{m} \times 4.5$ –(5.2, 0.7)–6.1 μm ; straight acanthostyles (Fig. 21G) with sharp spines on the terminal parts, close to the tips and scattered on the head, 40–(56.3, 10.3)–72 μm ; raphidiform toxas (Fig. 21H) slightly curved in the middle, 100–(104.5)–120 $\mu\text{m} \times 4.75$ –(6)–7.5 μm ; palmate chelae (Fig. 21I) 5–7.5 μm .

Remarks

Clathria (*Thalysias*) *hirsuta* Hooper & Levi, 1993 was exclusively known from New Caledonia and Australia (Great Barrier Reef); this is the first record in the Indian Ocean. The spicule shape, size and the morphology fit the original description of the species. However, Hooper & Levi (1993) recognized two distinct populations, with some morphological differences, one from Queensland and one from New Caledonia. The morphological characters (especially spicule size) make the specimens, here examined, closer to the population from New Caledonia.

On the specimen PO78 the hydroid *Zyzyzus warreni* Calder, 1988 (Class Hydrozoa, Phylum Cnidaria) was detected.

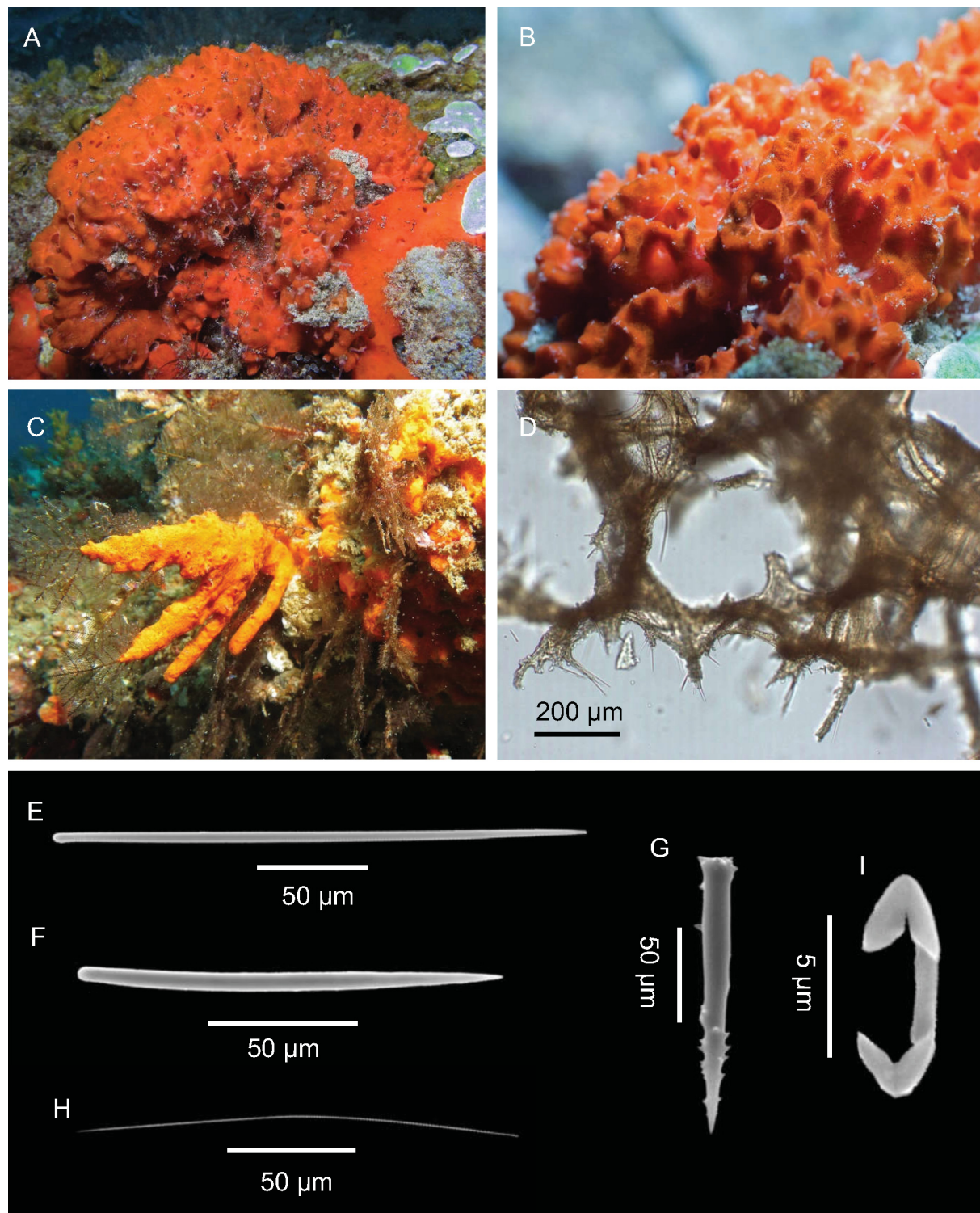


Fig. 21. *Clathria (Thalysias) hirsuta* Hooper & Levi, 1993. **A–B.** Massive specimen PO78 *in situ*. **C.** Digitiform specimen PO10 *in situ*. **D.** Choanosome. **E.** Smooth and straight style. **F.** Smooth and slightly curved style. **G.** Straight acanthostyles. **H.** Raphidiiform toxas. **I.** Palmate chela.

Clathria (Thalysias) vulpina (Lamarck, 1814)

Fig. 22

Spongia vulpina Lamarck, 1814: 449.

Material examined

PONTA DO OURO • 1 sample preserved dry; 26°46'39.864" S, 32°55'25.319" E; Cloud break; 34 m deep; 22 May 2015; Torsani leg.; IMG0826 • several fragments, the larger about 6 cm long; 26°49'17.512" S, 32°53'42.511" E; Kev's; 23.4 m deep; 3 Feb. 2017; Cerrano leg.; PO3.

Description

The live sponge is massive, with rounded conules covering the surface (Fig. 22A). The color is red-orange. The fragments preserved in alcohol are beige in color; they have a digitate-conulose surface and a very firm consistence.

SKELETON. The ectosome consists of a paratangential layer of thin styles (Fig. 22B). The choanosome (Fig. 22C) is made by a reticulation of multispicular primary fibers, 70–125 µm in section, and secondary fibers, 23–35 µm, forming irregularly rounded meshes around 150 µm wide. The fibers have a core of styles and are echinated by acanthostyles.

SPICULES. Slightly curved and smooth styles (Fig. 22D), sometimes straight, 145–(176.5, 21.4)–210 µm × 6–(7, 1.1)–9.5 µm; longer and straight subtylote styles (Fig. 22E), microspined or smooth on the head, 198.5–(230, 15.5)–250 µm × 4.5–(6.5, 0.8)–7.5 µm; subtylote acanthostyles (Fig. 22F), with smooth neck, 47.5–(51, 4.9)–72.5 µm; very thin toxas (Fig. 22G), bent in the middle, 143–181 µm; palmate isochelae (Fig. 22H) 11.3–14.6 µm.

Remarks

The specimens fit the original description of *Clathria (Thalysias) vulpina* (Lamarck, 1814) from Australia. The species has already been found in the area (Thomas 1979). On the specimen PO3, the hydroid *Zyzyzus warreni* Calder, 1988 (Class Hydrozoa, Phylum Cnidaria) grew.

Family Tedaniidae Ridley & Dendy, 1886

Genus *Tedania* Gray, 1867

Tedania sp.

Fig. 23

Material examined

PONTA DO OURO • 1 fragment; 26°49'29.579" S, 32°53'50.891" E; Blacks; 17 m deep; 11 Nov. 2015; Torsani leg.; PdO5.

Description

No available photos of the live sponge. The dried sample is a thin dirty-white lamina (20 × 30 × 5 mm), smooth and fragile.

SKELETON. In the fragment, it was impossible to distinguish ectosome from choanosome. The skeleton looks quite confused, with scattered spicules that sometimes become organized in loose tracts of tylotes.

SPICULES. Smooth styles (Fig. 23A), bent in the first third of the axis and with blunt tips, 255–(281.5, 7.5)–285 µm × 3.75–(4.5, 0.4)–5 µm; slightly curved tylotes (Fig. 23B), with slightly accentuated and

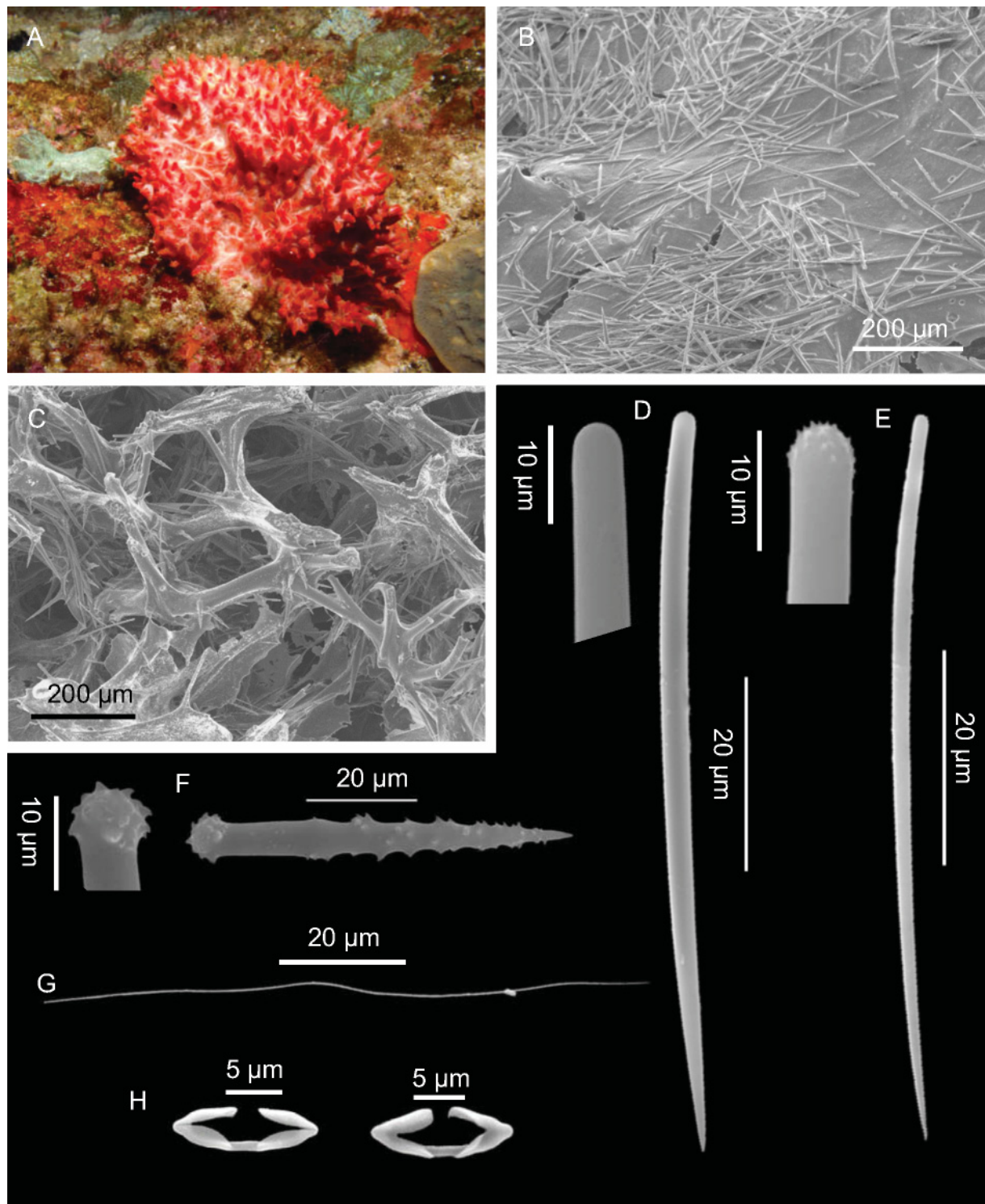


Fig. 22. *Clathria (Thalysias) vulpina* (Lamarck, 1814). **A.** Specimen IMG0826 *in situ*. **B.** Ectosomal skeleton (SEM). **C.** Choanosomal skeleton (SEM). **D.** Slightly curved style and magnification of its smooth head. **E.** Longer style and magnification of its microspined head. **F.** Acanthostyle and magnification of its microspined head. **G.** Very thin toxa. **H.** Palmate isochelas.

smooth tips, 245–(267.5, 25.1)–335 $\mu\text{m} \times 2.5$ –(3, 0.8)–5 μm ; onychaetes (Fig. 23C) with acerate tips and usually with a swelling close to one tip, 77.5–(125)–142.5 μm .

Remarks

The specimen belongs to the genus *Tedania* Gray, 1867 based on the presence of two kinds of megascleres, one monoactinial and one diactinial, and onychaetes; the assignment to the subgenus is tricky: species belonging to the subgenus *Tedania* Gray, 1867 have, generally, spined tylotes, but, e.g., *Tedania (Tedania) toxicalis* De Laubenfels, 1930 has smooth tylotes (see also Desqueyroux & Van Soest 1996: 54); *Tedaniopsis* Dendy, 1924 has longer choanosomal megascleres (> 350 μm) and *Trachytodania* Ridley, 1881 has mucronate or oxeote tornotes as ectosomal megascleres. As a consequence and also considering the reduced size of the specimen, preventing any additional investigation, we prefer not to attribute any subgenus or species to this sponge and describe it as *Tedania* sp.

Order Suberitida Chombard & Boury-Esnault, 1999

Family Halicondriidae Gray, 1867

Genus *Ciocalypta* Bowerbank, 1873

Ciocalypta heterostyla Hentschel, 1912

Fig. 24

Ciocalypta heterostyla Hentschel, 1912: 424, pl. 14, fig. 3, pl. 21, fig. 58.

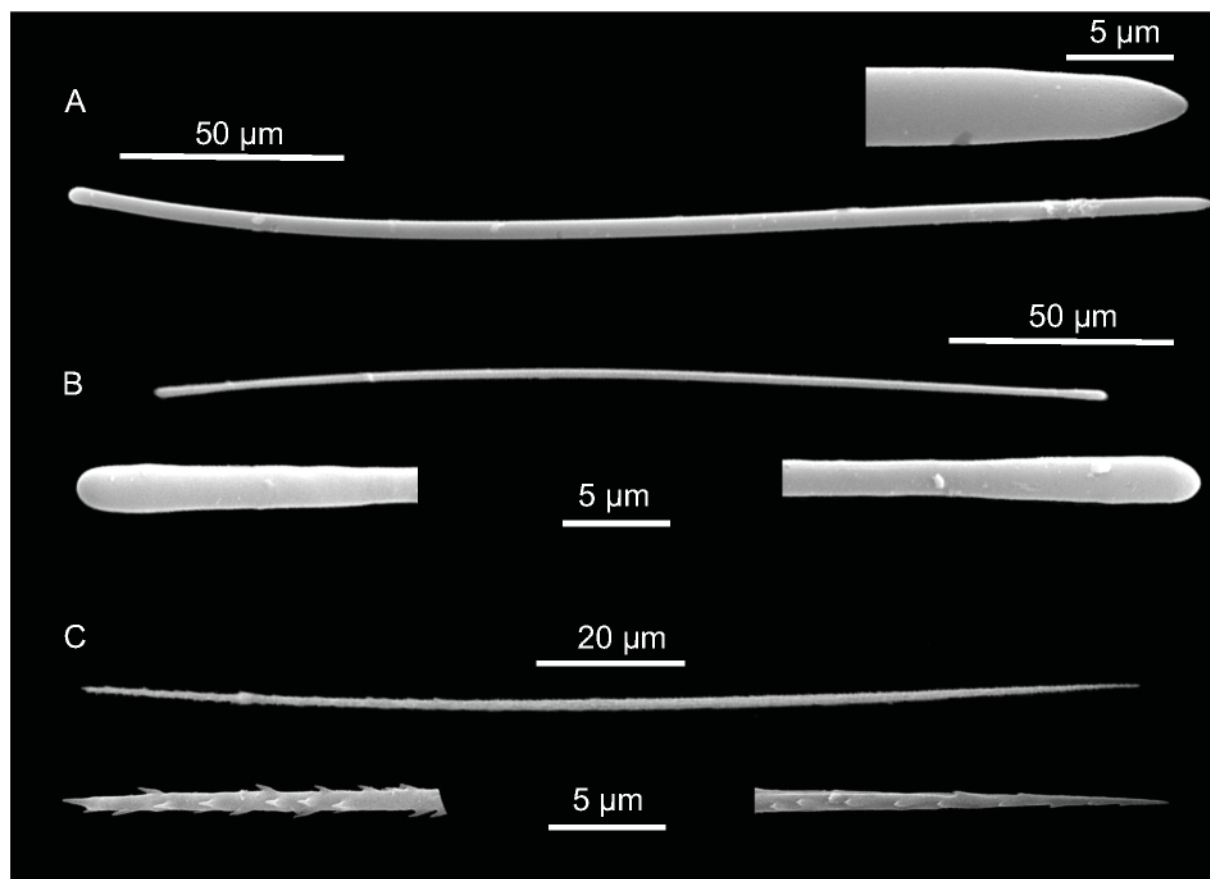


Fig. 23. *Tedania* sp., PdO5. **A.** Smooth style and magnification of the tip. **B.** Slightly curved tylote and magnification of the smooth tips. **C.** Onychaete and magnification of the tips.

Material examined

PONTA DO OURO • 1 fragment with some fistules and the basal portion, about $2 \times 1 \times 1$ cm; $26^{\circ}49'55.65''$ S, $32^{\circ}53'13.41''$ E; Three Sisters; 23.9 m deep; 21 Feb. 2017; Cerrano leg.; PO63.

Description

The sponge is burrowed under the sediment and only its erect fistules are visible (Fig. 24A). These are whitish, transparent, showing the yellow, internal axis. The alcohol preserved sample is a thin massive base bearing fistules; the color is dirty white. The consistence is really soft and extremely compressible.

SKELETON. The skeleton of the basal part consists of multispicular tracts in confusion and grains of sediment (Fig. 24B). The skeleton of fistules (Fig. 24C) has a central axis of densely packed spicules, about $100\ \mu\text{m}$ in section, close to the base, and gradually thinner towards the apex of the fistula. From the axis, multispicular fibers, $20\text{--}25\ \mu\text{m}$ in section, develop, opening in fans close to the surface (Fig. 24C).

SPICULES. The styles are in a wide range of shapes (straight, slightly curved, sinuous) and size, $285\text{--}(351.5, 63.7)\text{--}495\ \mu\text{m} \times 5\text{--}(8.3, 1.5)\text{--}10\ \mu\text{m}$ (Fig. 24 D–E).

Remarks

The presence on the surface of numerous finger-shaped and transparent fistulae with a central axis and the general structure of the skeleton are typical features of the genus *Ciocalypta* Bowerbank, 1862. To date, there are 26 species of *Ciocalypta* described (Van Soest *et al.* 2019). The specimen shares with *Ciocalypta heterostyla* Hentschel, 1912 the spicule size and shape, the skeleton organization and the

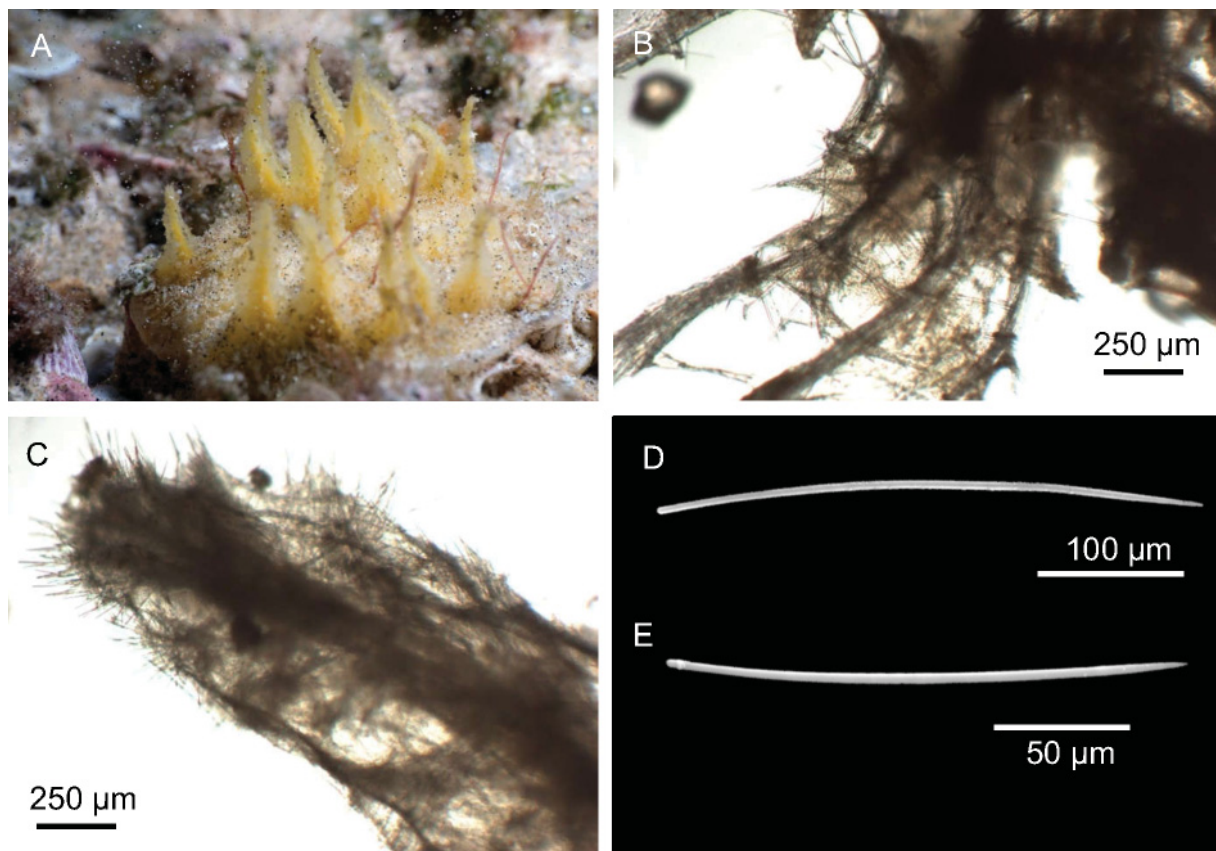


Fig. 24. *Ciocalypta heterostyla* Hentschel, 1912. **A.** Fistules erect, coming out the sediment (PO63). **B.** Skeleton of the basal part. **C.** Skeleton of fistules. **D–E.** Styles.

general morphology. This species is known from Indonesia and Arafura Sea (Van Soest *et al.* 2019) and, therefore, this is the first record for the Indian Ocean.

Ciocalypta tyleri Bowerbank, 1873

Fig. 25

Ciocalypta tyleri Bowerbank, 1873: 21, pl. 4.

Material examined

PONTA DO OURO • 1 dried sponge portion, with fistules, about 3×3×2 cm; 26°49'29.579" S, 32°53'51.035" E; Blacks; 18 m deep; 13 Nov. 2015; Cerrano leg.; PdO16.

Description

The sponge is massive, partially burrowing, with light yellow fistules (Fig. 25A) rising above the sediment. The dried sample is whitish, the body is rich in sediment, while the fistules are erect and fragile, with a rough surface.

SKELETON. In the body, it is formed by a confused reticulation, with loose tracts of oxeas (Fig. 25B). The fistules have a central axis of loose-packed oxeas from where tracts of spicules radiate towards the surface.

SPICULES. One size, 295–(351, 32.6)–400 μm × 5.1–(7.8, 1.3)–9.5 μm , of curved oxeas, sometimes bent in the middle (Fig. 25C).

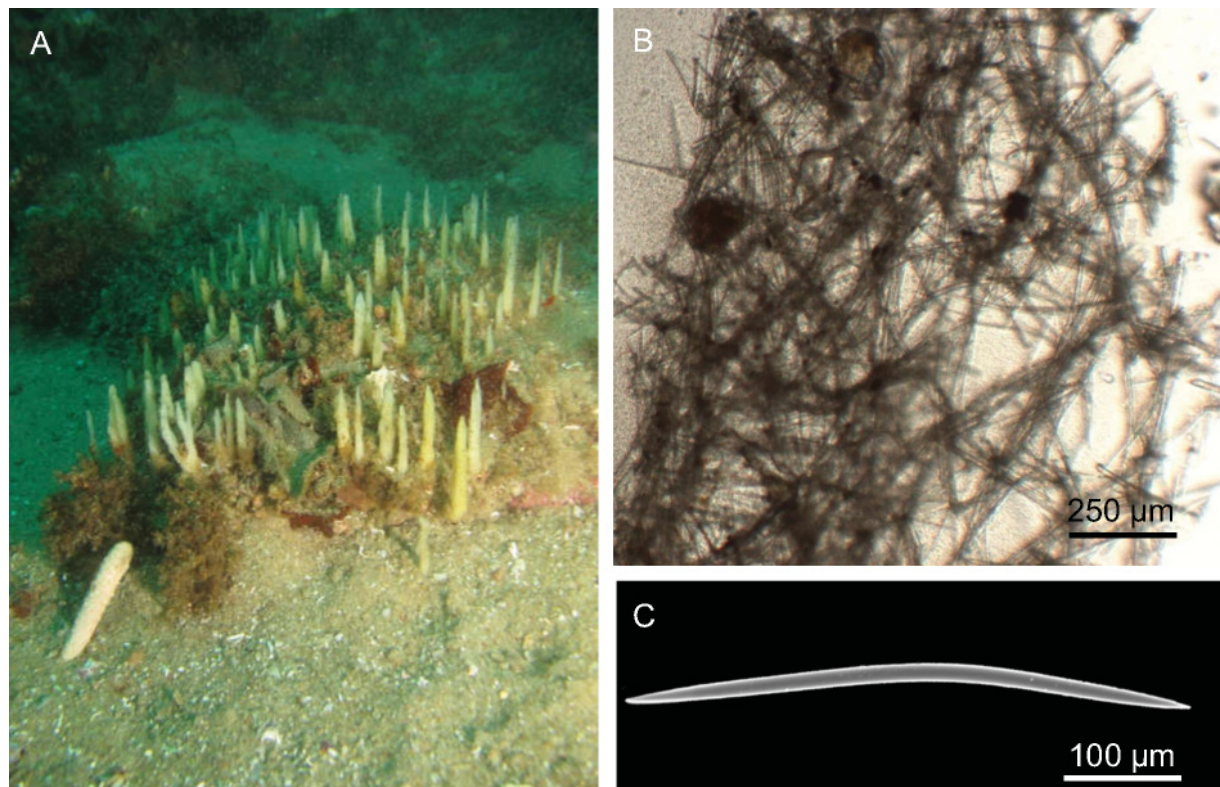


Fig. 25. *Ciocalypta tyleri* Bowerbank, 1873. **A.** Fistules erect coming out the sediment (PdO16). **B.** Skeleton of the basal part. **C.** Curved oxea.

Remarks

The presence of numerous finger-shaped and transparent fistulae with a central axis and the general structure of the skeleton characterize the genus *Ciocalypta* Bowerbank, 1862. To date, there are 26 species of *Ciocalypta* described (Van Soest *et al.* 2019). The examined sample fits the original description of *Ciocalypta tyleri* Bowerbank, 1873 from Port Elizabeth, South Africa, in the general structure and the spicule sizes.

Family Suberitidae Schmidt, 1870
Genus *Terpios* Duchassing & Michelotti, 1864

Terpios granulosus Bergquist, 1967

Fig. 26

Terpios granulosa Bergquist, 1967: 168, fig. 5.

Material examined

PONTA DO OURO • 1 sample growing on a *Carijoa* colony about 6 cm long; 26°46'55.65" S, 32°54'13.41" E; Three Sisters; 25.7 m deep; 8 Apr. 2017; Cerrano leg.; PO96.

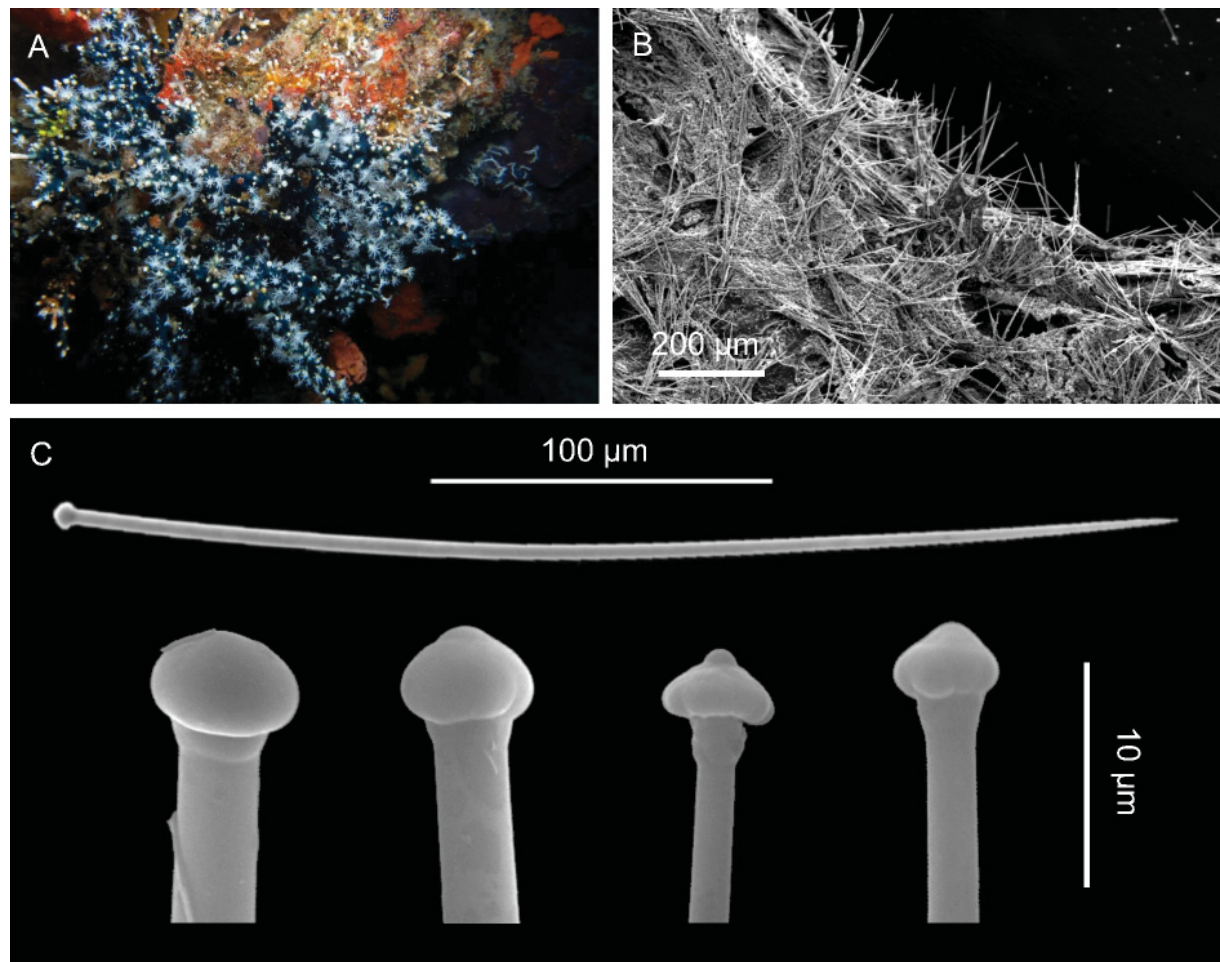


Fig. 26. *Terpios granulosus* Bergquist, 1967. **A.** Sponge (PO96) encrusting the octocoral *Carijoa* sp. **B.** Tylostyles organized in brushes (SEM). **C.** Tylostyle and magnification of heads, different in shape.

Description

Thin encrusting sponge, dark blue colored; it covers colonies of the octocoral *Carijoa* sp. (Class Anthozoa, Phylum Cnidaria) (Fig. 26A). Whitish in ethanol, bluish in formalin. The surface is microhispid.

SKELETON. It is formed by brushes of spicules which, projecting also over the surface, cause the microhispid surface (Fig. 26B).

SPICULES. Tylostyles with heads variable in shape, from mushroom-shape to plurilobate (Fig. 26C). The size is 77.5–(255, 81.7)–330 $\mu\text{m} \times 1.25$ –(4.1, 0.9)–5 μm .

Remarks

The peculiar shape of the heads, the general morphology and the skeletal structure are typical characters of species in the genus *Terpios* Duchassaing & Michelotti, 1864. The specimen fits the description of *Terpios granulatus* (Bergquist, 1967) from Hawaii later also recorded by Vacelet & Vasseur (1971) and Barnes & Bell (2002) from Kenya and Madagascar.

Order Tethyida Morrow & Cárdenas, 2015
Family Hemiasterellidae Lendenfeld, 1889
Genus *Hemiasterella* Carter, 1879

Hemiasterella complicata Topsent, 1919
Fig. 27

Hemiasterella complicata Topsent, 1919: 7, figs 2–5.

Material examined

PONTA DO OURO • 1 single, dried fragment of about 4 × 3 cm × 8 mm, several dried portions, 1 alcohol preserved; 26°46'39.864" S, 32°55'25.284" E; Cloud break; 34 m deep; 18 May 2015; Torsani leg.; IMG0516 • 1 fragment, alcohol preserved, of about 11 × 5 × 4 mm; 26°50'36.881" S, 32°54'54.478" E; Atlantis; 40.7 m deep; 6 Feb. 2017; Cerrano leg.; PO20 • 1 fragment, alcohol preserved; 26°46'38.829" S, 32°54'17.387" E; Waynes; 40.6 m deep; 17 Feb. 2017; Cerrano leg.; PO53.

Description

The sponge is lamellate, foliose; color is dark red to violet (Fig. 27A–B). On the surface, two specimens present algal turf. The samples preserved in alcohol changed color to beige; the dried samples are whitish, light brown; in the dried state, spicule tracts create an irregular pattern and thick lines on the surface. The samples have a micro-bristly surface and an elastic consistence.

SKELETON. The ectosome is constituted of a layer of densely packed euasters (Fig. 27C). the choanosome with plumo-reticulate tracts is formed by megascleres (Fig. 27D), without a well-marked differentiation between axial and extra-axial regions.

SPICULES. The megascleres are constituted by strongyloxeas and oxeas (Fig. 27E), with a wide range of intermediate forms, 590–(842.5, 100.8)–980 $\mu\text{m} \times 10$ –(17.25, 4.3)–25.5 μm ; strongylasters with at least five rays (Fig. 27F) with microspined rays 7.5–(12.4, 3.6)–20 μm , and smooth oxyasters 5–(8.9, 3.8)–25 μm (Fig. 27G).

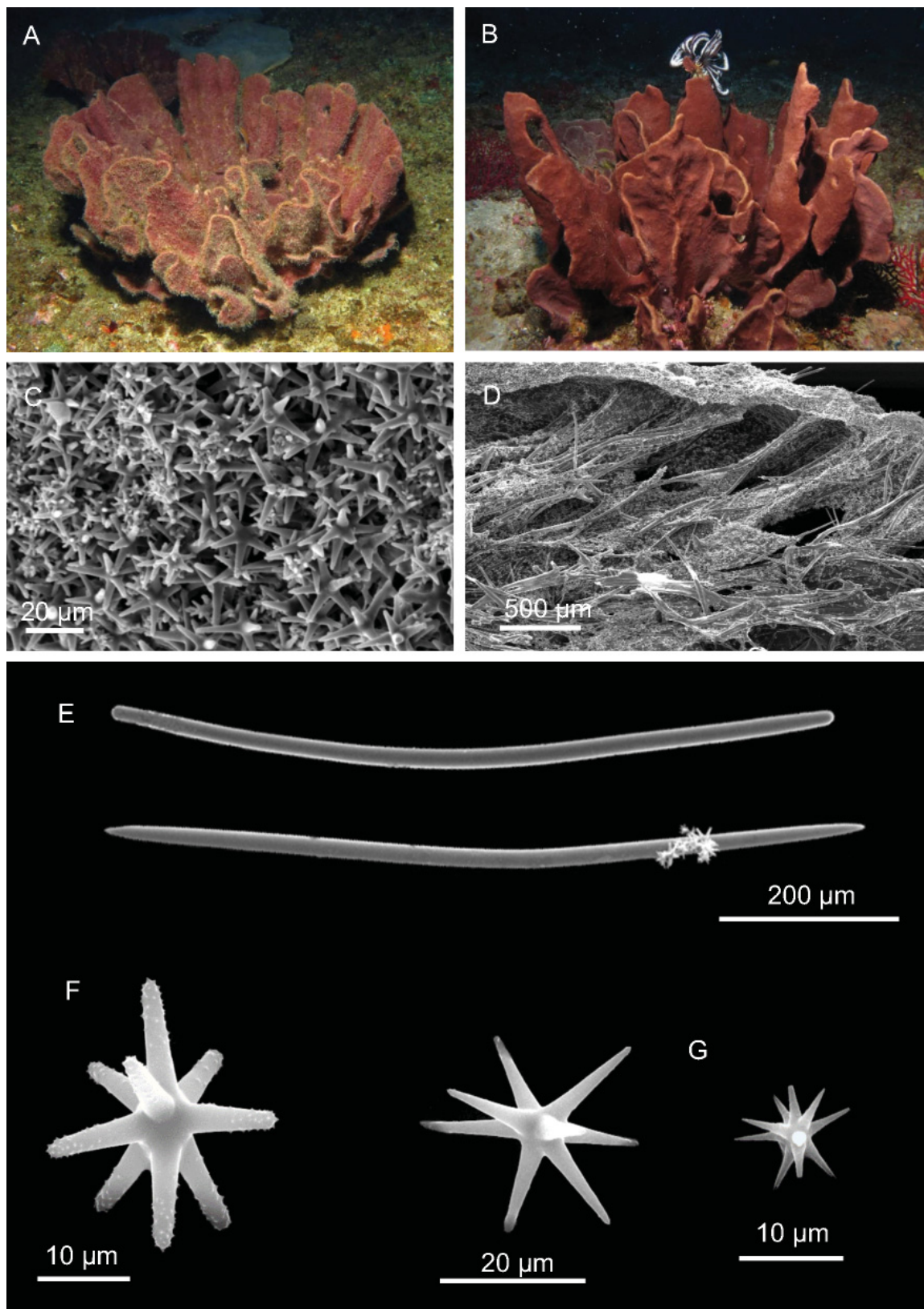


Fig. 27. *Hemiasterella complicata* Topsent, 1919. **A.** The specimen PO20 *in situ*. **B.** The specimen IMG 516. **C.** Ectosome constituted by densely packed euasters (SEM). **D.** Choanosomal skeleton (SEM). **E.** Strongyloxea and oxea. **F.** Strongylaster. **G.** Smooth oxyasters.

Remarks

The examined material fits with the species *Hemiasterella complicata* Topsent, 1919. This is a species with a strict distribution, confined to East Africa and Madagascar (Burton 1959; Vacelet *et al.* 1976; Pulitzer-Finali 1993). This species is also similar to *Hemiasterella vasiformis* (Kirkpatrick, 1903) (Topsent 1919), recently recorded by Samaai *et al.* (2019) in South Africa; as a consequence, a revision of the genus *Hemiasterella* and a genetic analysis would be necessary in order to clarify the possible synonymy.

Discussion

The majority of species in the taxon Porifera still waits to be described, but the rate of discovery is rapidly increasing (Appeltans *et al.* 2012). The poor knowledge of the sponge diversity, as well as of all other marine organisms, imperils the possibility to adequately manage and preserve biodiversity, also considering the recognized role sponges play as an optimal habitat for many associated taxa (Cerrano *et al.* 2006; Wulff 2012), offering food and shelter during critical phases of the life cycle of several species. A baseline knowledge should be the first step for monitoring biodiversity and preventing its decline or modification. On that note, this paper represents an important contribution to the knowledge of the sponge fauna of Mozambique; other dated papers are related to close areas such as Madagascar (Lévi 1956, 1964; Thomas 1979; Vacelet & Vasseur 1965, 1971; Vacelet *et al.* 1976) and East Africa (Pulitzer-Finali 1993), while a single study on the sponge diversity was conducted in North and South Mozambique by Barnes & Bell (2002). With respect to the latter paper, out of 68 species recorded from North and 37 from South Mozambique (80 species considering the two stations), only one, *Sphaciospongia vagabunda* (Ridley, 1884), has been recorded in Ponta do Ouro. The area of sampling has unique environmental features and belongs to the Western Indo-Pacific Province (Spalding *et al.* 2007), it is characterized by a high diversity and level of endemism (e.g., about 14% of fish, Briggs & Bowen 2012); our results reflect this diversity as, out of a total of 26 species of sponges described in Ponta do Ouro, four are new to science.

Ponta do Ouro is actually a transitional zone, located between the tropical Delagoa and the temperate Natal ecoregions. This particular geographical location is reflected in the high level of diversity, in the typical Indo-Pacific tropical species and in records formally belonging to the temperate Province (i.e., Agulhas), as we have detected. The coral reef present in the studied area has been characterized through orthomosaics techniques (Palma *et al.* 2017) and shows a general, low level of complexity, mainly in relation to the high energy of ocean waves that affects the size and shapes of coral colonies (Palma *et al.* 2019). The sponge assemblages can host huge specimens such as *Cliona grandis* Samaai *et al.*, 2019, showing patterns of growth clearly related to the main direction of water movement.

In the present study, eight species (*Pseudoceratina purpurea*, *Oceanapia ramsayi*, *Myrmekioderma granulatum*, *Theonella conica*, *Sphaciospongia vagabunda*, *Chondropsis lamella*, *Clathria (Thalysias) vulpina* and *Terpios granulosus* are widespread in the Indo-Pacific, as well as four other diffused species (*Chondrosia corticata*; *Callyspongia (Cladochalina) aerizusa*; *Clathria (Thalysias) hirsuta*, 1993 and *Ciocalypa heterostyla* that are, however, new records for the Indian Ocean. *Ciocalypa tyleri* (described for South Africa, Port Elizabeth) and four species recently described for South-East Africa (*Theonella timmi*, *Cliona grandis*, *Sphaciospongia ndabazithe*, *Iotrochota cf. sinki*) confirm the value of the transitional zone of the studied area.

Acknowledgments

This research has been partially funded by the EU's H2020 research and innovation programme under the Marie Skłodowska-Curie grant agreement no 643712 ("Green Bubbles"). The authors wish to thank Dr Marco Bertolino, University of Genova, Italy, for the loan of Pulitzer's personal collection as well as Jenny Strömvoll and Rupert Cornelius (Back to Basics Adventures) for logistic support and enthusiasm.

References

- Appeltans W. *et al.* 2012. The magnitude of global marine species diversity. *Current Biology* 22: 2189–2202. <https://doi.org/10.1016/j.cub.2012.09.036>
- Barnes D.K.A. & Bell J.J. 2002. Coastal sponge communities of the West Indian Ocean: morphological, richness and diversity. *African Journal of Ecology* 40: 350–359. <https://doi.org/10.1046/j.1365-2028.2002.00388.x>
- Benayahu Y. & Shlagman M.H.S. 2003. Corals of the South-West Indian Ocean: VI. The Alcyonacea (Octocorallia) of Mozambique, with a discussion on soft coral distribution on south equatorial East African reefs. *Zoologische Verhandelingen* 345: 49–57.
- Bensemhoun J., Bombarda I., Aknin M., Faure R., Vacelet J. & Gaydou E.M. 2008. Marine bifunctional sphingolipids from the sponge *Oceanapia ramsayi*. *Molecules* 13 (4): 772–778. <https://doi.org/10.3390/molecules13040772>
- Bergquist P.R. 1965. The Sponges of Micronesia, Part I. The Palau Archipelago. *Pacific Science* 19 (2): 123–204.
- Bergquist P.R. 1967. Additions to the sponge fauna of the Hawaiian Islands. *Micronesica* 3 (2): 159–174.
- Bowerbank J.S. 1873. Contributions to a General History of the Spongiadae. Part IV. *Proceedings of the Zoological Society of London* 1873: 3–25.
- Briggs J.C. & Bowen B.W. 2012. A realignment of marine biogeographic provinces with particular reference to fish distributions. *Journal of Biogeography* 39: 12–30. <https://doi.org/10.1111/j.1365-2699.2011.02613.x>
- Burton M. 1959. Sponges. In: *Scientific Reports. John Murray Expedition 1933–34*. 10 (5): 151–281 Trustees of the British Museum (Natural History), London. Available from <https://www.biodiversitylibrary.org/page/49512735> [accessed 9 Jul. 2020].
- Carter H.J. 1880. Report on specimens dredged up from the Gulf of Manaar and presented to the Liverpool Free Museum by Capt. W.H. Cawne Warren. *Annals and Magazine of Natural History* (5) 6 (31): 35–61.
- Cerrano C., Calcinai B., Pinca S. & Bavestrello G. 2006. Reef sponges as hosts of biodiversity: cases from North Sulawesi. In: Suzuki Y., Nakamori T., Hidaka M., Kayanne H., Casareto B.E., Nadao K., Yamano H. & Tsuchiya M. (eds) *Xth Coral Reef Symposium*: 208–213. Okinawa.
- Cook S. de C. & Bergquist P.R. 2002. Family Spongiidae Gray, 1867. In: Hooper J.N.A. & Van Soest R.W.M. (eds) *Systema Porifera. A Guide to the Classification of Sponges* 1: 1051–1060. Kluwer Academic/Plenum Publishers, New York.
- Daly C.A.K., Fraser G. & Snowball J.D. 2013. Willingness to pay for marine-based tourism in the Ponta do Ouro Partial Marine Reserve, Mozambique. *African Journal of Marine Science* 37: 33–40. <https://doi.org/10.2989/1814232X.2015.1012556>
- Dendy A. 1905. Report on the sponges collected by Professor Herdman, at Ceylon, in 1902. In: Herdman W.A. (ed) *Report to the Government of Ceylon on the Pearl Oyster Fisheries of the Gulf of Manaar* 3: 57–246.
- Desqueyroux-Faúndez R. 1984. Description de la faune des Haplosclerida (Porifera) de la Nouvelle-Calédonie. I. Niphatidae-Callyspongiidae. *Revue suisse de Zoologie* 91 (3): 765–827. <https://doi.org/10.5962/bhl.part.81580>
- Desqueyroux-Faúndez R. & Valentine C. 2002a. Family Callyspongiidae de Laubenfels, 1936. In: Hooper J.N.A. & Van Soest R.W.M. (eds) *Systema Porifera. A Guide to the Classification of Sponges* 1: 835–851. Kluwer Academic/Plenum Publishers, New York.

- Desqueyroux-Faúndez R. & Valentine C. 2002b. Family Niphatidae Van Soest, 1980. In: Hooper J.N.A. & Van Soest R.W.M. (eds) *Systema Porifera. A Guide to the Classification of Sponges* 1: 874–890. Kluwer Academic/Plenum Publishers, New York.
- Desqueyroux-Faúndez R. & Van Soest R.W.M. 1996. A review of Iophonidae, Myxillidae and Tedaniidae occurring in the South East Pacific (Porifera: Poecilosclerida). *Revue suisse de Zoologie* 103 (1): 3–79. <https://doi.org/10.5962/bhl.part.79938>
- Esper E.J.C. 1829. *Die Pflanzenthiere in Abbildungen nach der Natur mit Farben erleuchtet, nebst Beschreibungen. Dritter Theil*. Raspe, Nürnberg.
- Guerreiro J., Chircop A., Dzidzornu D., Grilo C., Ribeiro R., Van Der Elst R. & Viras A. 2011. The role of international environmental instruments in enhancing transboundary marine protected areas: An approach in East Africa. *Marine Policy* 35: 95–104. <https://doi.org/10.1016/j.marpol.2010.06.013>
- Hallmann E.F. 1914. A revision of the monaxonid species described as new in Lendenfeld's Catalogue of the Sponges in the Australian Museum. Part I. *Proceedings of the Linnean Society of New South Wales* 39: 263–315. <https://doi.org/10.5962/bhl.part.2281>
- Hallmann E.F. 1914. A revision of the monaxonid species described as new in Lendenfeld's Catalogue of the Sponges in the Australian Museum. Part II. *Proceedings of the Linnean Society of New South Wales* 39: 327–376. <https://doi.org/10.5962/bhl.part.2283>
- Hallmann E.F. 1914. A revision of the monaxonid species described as new in Lendenfeld's Catalogue of the Sponges in the Australian Museum. Part III. *Proceedings of the Linnean Society of New South Wales* 39: 398–446.
Available from <https://www.biodiversitylibrary.org/page/6382433> [accessed 9 Jul. 2020].
- Hentschel E. 1912. Kiesel- und Hornschwämme der Aru- und Kei-Inseln. *Abhandlungen herausgegeben von der Senckenbergischen naturforschenden Gesellschaft* 34 (3): 293–448.
- Hooper J.N.A. 2000. Sponguide. Guide to Sponge Collection and Identification. Available from <https://www.qm.qld.gov.au/Find+out+about/Animals+of+Queensland/Sea+Life/Sponges/Online+resources> [accessed 28 Jul. 2020].
- Hooper J.N.A. 2002. Family Desmoxyidae Hallmann, 1916. In: Hooper J.N.A. & Van Soest R.W.M. (eds) *Systema Porifera. A Guide to the Classification of Sponges. Volume 1*: 755–772. Kluwer Academic/Plenum Publishers, New York/Boston/Dordrecht/London/Moscow.
- Hooper J.N.A. & Lévi C. 1993. Poecilosclerida (Porifera: Demospongiae) from the New Caledonia Lagoon. *Invertebrate Taxonomy* 7 (5): 1221–1302.
- Hooper J.N.A. & Van Soest R.W.M. 2002. *Systema Porifera: A Guide to the Classification of Sponges*. Kluwer Academic/Plenum Publishers, New York.
- Ilan M., Gugel J. & Van Soest R.W.M. 2004. Taxonomy, reproduction and ecology of new and known Red Sea sponges. *Sarsia* 89: 388–410. <https://doi.org/10.1080/00364820410002659>
- Keller C. 1889. Die Spongienfauna des rothen Meeres (I. Hälfte). *Zeitschrift für wissenschaftliche Zoologie* 48: 311–405.
- Kieschnick O. 1896. Silicispongiae von Ternate nach den Sammlungen von Herrn Prof. Dr. W. Kükenthal. *Zoologischer Anzeiger* 19: 526–534.
- Lamarck de J.-B. 1814. Sur les polypiers empâtés. *Annales du Museum national d'histoire naturelle* 20: 294–312; 370–386; 432–458.
- Lazoski C., Solé-Cava A., Boury-Esnault N., Klautau M. & Russo C. 2001. Cryptic speciation in a high gene flow scenario in the oviparous marine sponge *Chondrosia reniformis*. *Marine Biology* 139 (3): 421–429.

- Lendenfeld von R. 1888. *Descriptive Catalogue of the Sponges in the Australian Museum*: 188. Taylor & Francis, Sidney, London.
- Lendenfeld von R. 1889. *A Monograph of the Horny Sponges*. Trübner and Co., London.
- Lévi C. 1956. Spongiaires des côtes de Madagascar. *Mémoires de l'Institut scientifique de Madagascar* (A) 10: 1–23.
- Lévi C. 1958. Résultats scientifiques des campagnes de la 'Calypso'. Campagne 1951–1952 en Mer Rouge (suite). 11. Spongiaires de Mer Rouge recueillis par la 'Calypso' (1951–1952). *Annales de l'Institut océanographique* 34 (3): 3–46.
- Lévi C. 1964. Spongiaires du canal de Mozambique. *Bulletin du Museum national d'histoire naturelle* (2) 36 (3): 384–395.
- Morrow C. & Cárdenas P. 2015. Proposal for a revised classification of the Demospongiae (Porifera). *Frontiers in Zoology* 12: 7. <https://doi.org/10.1186/s12983-015-0099-8>
- Obura D. 2012. The diversity and biogeography of Western Indian Ocean reef-building corals. *PLoS ONE* 7 (9): e45013. <https://doi.org/10.1371/journal.pone.0045013>
- Olson D. 2010. *A Decade of Conservation by the Critical Ecosystem Partnership Fund 2001–2010: An Independent Evaluation of CEPF's Global Impact*. Conservation Earth for the Critical Ecosystem Partnership Fund, Arlington, Virginia.
- Palma M., Rivas Casado M., Pantaleo U. & Cerrano C. 2017. High resolution orthomosaics of African coral reefs: A tool for wide-scale benthic monitoring. *Remote Sensing* 9: 705. <https://doi.org/10.3390/rs9070705>
- Palma M., Magliozzi C., Rivas Casado M., Pantaleo U., Fernandes J., Coro G., Cerrano C. & Leinster P. 2019. Quantifying coral reef composition of recreational diving sites: a structure from motion approach at seascape scale. *Remote Sensing* 1 (24): 3027. <https://doi.org/10.3390/rs11243027>
- Pereira M.A.M. 2000. *Levantamento Bibliográfico da Investigação nos Recifes de Coral em Moçambique*. Xai-Xai, CDS – MICOA.
- Pereira M.A.M., Litulo C., Santos R., Leal M., Fernandes R.S., Tibrica Y. & Marques da Silva I. 2014. *Mozambique Marine Ecosystem Review*. Final report submitted to Fondation Ensemble (December), 139. Maputo, Biodinâmica/CTV. <https://doi.org/10.13140/2.1.2092.5766>
- Ponta do Ouro Partial Marine Reserve (PPMR). 2009. *Management Plan*. November 2009. Maputo Special Reserve Marine Management Component.
- Pulitzer-Finali G. 1993. A collection of marine sponges from East Africa. *Annali del Museo civico di Storia Naturale Giacomo Doria* 89: 247–350.
- Ridley S.O. 1884. Spongiida. *Report on the Zoological Collections made in the Indo-Pacific Ocean during the Voyage of H.M.S. 'Alert', 1881–2*: 36–482. British Museum of Natural History.
- Rützler K. 1978. Sponges in coral reefs. In: Stoddard D.R. & Johannes R.E. (eds) *Coral reefs: Research Methods*. *Monographs on Oceanographic Methodology* 5: 299–313. UNESCO, Paris.
- Samaai T., Pillay R. & Janson L. 2019. Shallow-water Demospongiae (Porifera) from Sodwana Bay, iSimangaliso Wetland Park, South Africa. *Zootaxa* 4587 (1): 1–85. <https://doi.org/10.11646/zootaxa.4587.1.1>
- Santos Neto C., Nascimento E., Cavalcanti T. & Pinheiro U. 2018. Taxonomy of *Oceanapia* Norman, 1869 (Demospongiae: Haplosclerida: Phloeodictyidae) from the Brazilian coast. *Zootaxa* 4455 (2): 363. <https://doi.org/10.11646/zootaxa.4455.2.6>

- Schleyer M.H., Heikoop J.M. & Risk M.J. 2006. A benthic survey of Aliwal Shoal and assessment of the effects of a wood pulp effluent on the reef. *Marine Pollution Bulletin* 52: 503–514.
<https://doi.org/10.1016/j.marpolbul.2005.09.038>
- Spalding M.D., Fox H.E., Allen G.R., Davidson N., Ferdaña Z.A., Finlayson M. & Robertson J. 2007. Marine ecoregions of the world: a bioregionalization of coastal and shelf areas. *BioScience* 57 (7): 573–583. <https://doi.org/10.1641/B570707>
- Thiele J. 1900. Kiesel Schwämme von Ternate. I. *Abhandlungen herausgegeben von der Senckenbergischen naturforschenden Gesellschaft* 25: 19–80.
- Thomas P.A. 1979. Studies on sponges of the Mozambique Channel. I. Sponges of Inhaca Island. II. Sponges of Mambone and Paradise Islands. *Annales du Musée royal de l'Afrique centrale* 8: 1–73.
- Topsent E. 1919. Notes sur les genres *Semisuberites* et *Hemiasasterella*. *Bulletin de l'Institut océanographique, Monaco* 359: 1–11.
- Vacelet J. & Vasseur P. 1965. Spongiaires des grottes et surplombs des récifs de Tulear (Madagascar). *Recueil des Travaux de la Station marine d'Endoume* 2–4: 71–123.
- Vacelet J. & Vasseur P. 1971. Éponges des récifs coralliens de Tuléar (Madagascar). *Tethys, Supplement* 1: 51–126.
- Vacelet J., Vasseur P. & Levi C. 1976. Spongiaires de la pente externe des récifs coralliens de Tulear (Sud-Ouest de Madagascar). *Mémoires du Muséum national d'histoire naturelle (A, Zoologie)* 49: 1–116.
- Van Soest R.W.M. 2002. Family Chondropsidae Carter, 1886. In: Hooper J.N.A. & Van Soest R.W.M. (eds) *Systema Porifera. A Guide to the Classification of Sponges. Volume 1*: 521–527. Kluwer Academic/Plenum Publishers, New York.
- Van Soest R.W.M., Boury-Esnault N., Hooper J.N.A., Rützler K., de Voogd N.J., Alvarez B., Hajdu E., Pisera A.B., Manconi R., Schönberg C., Klautau M., Kelly M., Vacelet J., Dohrmann M., Díaz M.C., Cárdenas P., Carballo J.L., Ríos P., Downey R. & Morrow C.C. 2019. World Porifera Database.
<https://doi.org/10.14284/359>
- Van Soest R.W.M., Hooper J.N.A. & Butler P.J. 2020. Every sponge its own name: removing Porifera homonyms. *Zootaxa* 4745 (1): 1–93.
- Wulff J.L. 2012. Ecological interactions and the distribution, abundance, and diversity of sponges. In: Becerro M.A., Uriz M.J., Maldonado M. & Turon X. (eds) *Advances in Marine Biology*. Vol. 61: *Advances in Sponge Science: Phylogeny, Systematics, Ecology*: 273–344.
<https://doi.org/10.1016/B978-0-12-387787-1.00003-9>

Manuscript received: 13 January 2020

Manuscript accepted: 10 June 2020

Published on: 7 August 2020

Topic editor: Rudy Jocqué

Desk editor: Kristiaan Hoedemakers

Printed versions of all papers are also deposited in the libraries of the institutes that are members of the *EJT* consortium: Muséum national d'histoire naturelle, Paris, France; Meise Botanic Garden, Belgium; Royal Museum for Central Africa, Tervuren, Belgium; Royal Belgian Institute of Natural Sciences, Brussels, Belgium; Natural History Museum of Denmark, Copenhagen, Denmark; Naturalis Biodiversity Center, Leiden, the Netherlands; Museo Nacional de Ciencias Naturales-CSIC, Madrid, Spain; Real Jardín Botánico de Madrid CSIC, Spain; Zoological Research Museum Alexander Koenig, Bonn, Germany; National Museum, Prague, Czech Republic.

Appendix (continued on next two pages).

List of the identified species, with collection code as well as data about sampling and conservation status.

Species	Code	Date of sampling	Site	Coordinates	Depth (m)	Conservation
<i>Hyattella pedunculata</i>	IMG0514	18 May 15	Cloud break	26°46'39.864" S 32°55'25.247" E	34	dried
<i>Hemiasterella complicata</i>	IMG0516	18 May 15	Cloud break	26°46'39.864" S 32°55'25.284" E	34	dried
<i>Clathria (Thalysias) vulpina</i>	IMG0826	22 May 15	Cloud break	26°46'39.864" S 32°55'25.319" E	36	dried
<i>Callyspongia (Callyspongia) pulitzeri</i>	IMG0827	22 May 15	Cloud break	26°46'39.864" S 32°55'25.355" E	36	dried
<i>Cliona grandis</i>	IMG0830	22 May 15	Cloud break	26°46'39.864" S 32°55'25.392" E	36	dried
<i>Cliona grandis</i>	IMG0913	24 May 15	Blacks	26°49'29.579" S 32°53'50.819" E	18	dried
<i>Cliona grandis</i>	Pd02	11 Nov. 15	Blacks	26°49'29.579" S 32°53'50.819" E	17	dried
<i>Tedania</i> sp.	Pd05	11 Nov. 15	Blacks	26°49'29.579" S 32°53'50.891" E	17	dried
<i>Spheciospongia vagabunda</i>	Pd014	13 Nov. 15	Blacks	26°49'29.579" S 32°53'50.891" E	18	dried
<i>Ciocalyptra tyleri</i>	Pd016	13 Nov. 15	Blacks	26°49'29.579" S 32°53'51.035" E	18	dried
<i>Theonella timmi</i>	Pd017	13 Nov. 15	Blacks	26°49'29.579" S 32°53'51.072" E	18	dried
<i>Callyspongia (Cladochalina) aerizusa</i>	Pd018a	14 Nov. 15	Doodles	26°49'50.408" S 32°53'45.97" E	18	alcohol
<i>Amphimedon palmata</i> sp. nov.	Pd018b	14 Nov. 15	Doodles	26°49'50.408" S 32°53'45.974" E	18	alcohol
<i>Chondropsis lamella</i>	Pd018c	14 Nov. 15	Doodles	26°49'50.408" S 32°53'45.977" E	18	alcohol
<i>Cliona grandis</i>	Pd019	15 Nov. 15	Texas	26°45'41.04" S 32°54'7.138" E	11	dried
<i>Cliona grandis</i>	Pd022	15 Nov. 15	Texas	26°45'41.04" S 32°54'7.141" E	11	dried
<i>Theonella timmi</i>	Pd023	15 Nov. 15	Texas	26°45'41.04" S 32°54'7.144" E	11	dried
<i>Theonella timmi</i>	Pd026	18 Nov. 15	Doodles	26°49'50.408" S 32°53'45.974" E	18	dried
<i>Oceanapia ramsayi</i>	Pd027	20 Nov. 15	Kev's	26°49'17.512" S 32°53'42.5" E	17	dried

Appendix (continued).

Species	Code	Date of sampling	Site	Coordinates	Depth (m)	Conservation
<i>Oceanapia ramsayi</i>	PdO28	20 Nov. 15	Kev's	26°49'17.512" S 32°53'42.503" E	17	dried
<i>Theonella conica</i>	PO02	3 Feb. 17	Kev's	26°49'17.512" S 32°53'42.507" E	23.4	dried
<i>Clathria (Thalysias) vulpina</i>	PO03	3 Feb. 17	Kev's	26°49'17.512" S 32°53'42.511" E	23.4	dried
<i>Pseudoceratina purpurea</i>	PO04	3 Feb. 17	Kev's	26°49'17.512" S 32°53'42.514" E	23.4	alcohol
<i>Callyspongia (Euplacella) abnormis</i>	PO05	3 Feb. 17	Kev's	26°49'17.512" S 32°53'42.518" E	23.4	alcohol
<i>Chondrosia corticata</i>	PO07	3 Feb. 17	Kev's	26°49'17.512" S 32°53'42.521" E	23.4	alcohol
<i>Clathria (Thalysias) hirsuta</i>	PO10	4 Feb. 17	Blacks	26°49'29.579" S 32°53'51.072" E	19.2	dried
<i>Theonella timmi</i>	PO18	6 Feb. 17	Atlantis	26°50'36.881" S 32°54'54.471" E	40.7	alcohol
<i>Theonella timmi</i>	PO19	6 Feb. 17	Atlantis	26°50'36.881" S 32°54'54.475" E	40.7	alcohol
<i>Hemiasterella complicata</i>	PO20	6 Feb. 17	Atlantis	26°50'36.881" S 32°54'54.478" E	40.7	alcohol
<i>Phoriospongia mozambiquensis</i> sp. nov.	PO21	7 Feb. 17	Doodles	26°49'50.408" S 32°53'45.97" E	17	alcohol
<i>Cliona grandis</i>	PO22	7 Feb. 17	Doodles	26°49'50.408" S 32°53'45.974" E	17	alcohol
<i>Cliona grandis</i>	PO23	7 Feb. 17	Doodles	26°49'50.408" S 32°53'45.977" E	17	alcohol
<i>Cliona grandis</i>	PO27	9 Feb. 17	Close	26°49'50.408" S 32°53'57.659" E	18.6	alcohol
<i>Theonella conica</i>	PO29	9 Feb. 17	Close	26°47'34.8" S 32°53'57.662" E	18.6	alcohol
<i>Callyspongia (Euplacella) abnormis</i>	PO30	9 Feb. 17	Close	26°47'34.8" S 32°53'57.665" E	18.6	alcohol
<i>Chondropsis lamella</i>	PO32	9 Feb. 17	Close	26°47'34.8" S 32°53'57.668" E	18.6	alcohol
<i>Chondropsis lamella</i>	PO33	9 Feb. 17	Close	26°47'34.8" S 32°53'57.671" E	18.6	alcohol
<i>Theonella timmi</i>	PO34	11 Feb. 17	Kev's	26°49'17.512" S 32°53'42.5" E	22.4	alcohol

Appendix (continued).

Species	Code	Date of sampling	Site	Coordinates	Depth (m)	Conservation
<i>Theonella timmi</i>	PO35	11 Feb. 17	Kev's	26°49'17.512" S 32°53'42.503" E	22.4	alcohol
<i>Theonella timmi</i>	PO36	11 Feb. 17	Kev's	26°49'17.512" S 32°53'42.507" E	22.4	alcohol
<i>Hyattella pedunculata</i> sp. nov.	PO51	17 Feb. 17	Waynes	26°46'38.829" S 32°54'17.381" E	40.6	alcohol
<i>Spheciospongia ndabazithe</i>	PO52	17 Feb. 17	Waynes	26°46'38.829" S 32°54'17.384" E	40.6	alcohol
<i>Hemiasasterella complicata</i>	PO53	17 Feb. 17	Waynes	26°46'38.829" S 32°54'17.387" E	40.6	alcohol
<i>Ciocalypta heterostyla</i>	PO63	21 Feb. 17	Three sisters	26°49'55.65" S 32°53'13.41" E	23.9	alcohol
<i>Cliona grandis</i>	PO64	21 Feb. 17	Three sisters	26°49'55.65" S 32°53'13.413" E	23.9	alcohol
<i>Amphimedon brevispiculifera</i>	PO65	21 Feb. 17	Three sisters	26°49'55.65" S 32°53'13.417" E	23.9	alcohol
<i>Hyattella sulfurea</i> sp. nov.	PO71	4 Mar. 17	Atlantis	26°50'36.881" S 32°54'54.471" E	47.7	alcohol
<i>Clathria (Thalysias) hirsuta</i>	PO78	6 Mar. 17	Tea garden	26°49'16.561" S 32°53'52.979" E	19.7	alcohol
<i>Chondropsis lamella</i>	PO79	6 Mar. 17	Tea garden	26°49'55.65" S 32°53'52.982" E	19.7	alcohol
<i>Callyspongia (Cladochalina) aerizusa</i>	PO82	11 Mar. 17	Kev's	26°50'36.881" S 32°53'42.5" E	24.1	alcohol
<i>Iotrochota</i> cf. <i>sinki</i>	PO85	14 Mar. 17	Three Sisters	26°46'55.65" S 32°54'13.41" E	24.2	alcohol
<i>Callyspongia (Cladochalina) aerizusa</i>	PO86	14 Mar. 17	Three sisters	26°46'55.65" S 32°54'13.413" E	24.2	alcohol
<i>Theonella timmi</i>	PO88	17 Mar. 17	Green bubbles	26°49'19.119" S 32°54'9.82" E	41.5	alcohol
<i>Terpios granulosus</i>	PO96	8 Apr. 17	Three sisters	26°46'55.65" S 32°54'13.41" E	25.7	alcohol
<i>Pseudoceratina purpurea</i>	PO97	12 Apr. 17	Jenny's Paradise	26°46'50.336" S 32°54'12.329" E	17.8	alcohol
<i>Myrmekioderma granulatum</i>	PO98	20 Apr. 17	Doodles	26°49'50.408" S 32°53'45.97" E	17.6	alcohol
<i>Iotrochota</i> cf. <i>sinki</i>	PO100	22 Apr. 17	Kev's	26°49'17.512" S 32°53'42.5" E	26.2	alcohol

ZOBODAT - www.zobodat.at

Zoologisch-Botanische Datenbank/Zoological-Botanical Database

Digitale Literatur/Digital Literature

Zeitschrift/Journal: [European Journal of Taxonomy](#)

Jahr/Year: 2020

Band/Volume: [0698](#)

Autor(en)/Author(s): Calcinai Barbara, Belfiore Guiseppe, Pica Daniela, Torsani Fabrizio, Palma Marco, Cerrano Carlo

Artikel/Article: [Porifera from Ponta do Ouro \(Mozambique\) 1-56](#)