



This work is licensed under a Creative Commons Attribution License (CC BY 4.0).

## Research article

urn:lsid:zoobank.org:pub:C55FEEC3-B229-4619-9EB9-330CA42D2253

# Two new species of the genus *Oryctopterus* (Orthoptera: Stenopelmatidae: Oryctopinae) from India, with some notes on biology

S.R. HIREMATH<sup>1</sup> & K.D. PRATHAPAN<sup>2,\*</sup>

<sup>1,2</sup>Department of Agricultural Entomology, Kerala Agricultural University, Vellayani PO, Trivandrum-695 522, Kerala, India.

\*Corresponding author: [prathapankd@gmail.com](mailto:prathapankd@gmail.com)

<sup>1</sup>Email: [sangu3711@gmail.com](mailto:sangu3711@gmail.com)

<sup>1</sup>urn:lsid:zoobank.org:author:77A38404-8684-420A-892B-7FCD26A7094D

<sup>2</sup>urn:lsid:zoobank.org:author:68E05D80-9F21-4632-8AEE-92F3994CBEE0

**Abstract.** The genus *Oryctopterus* Karny, 1937 (Orthoptera, Stenopelmatidae, Oryctopinae) is reported from India for the first time and two new species, *Ot. varuna* sp. nov. and *Ot. yeshwanthi* sp. nov. are described. Male and female external genitalia of *Ot. varuna* sp. nov. and female genitalia of *Ot. yeshwanthi* sp. nov. are figured and described. Notes on seasonality, food habits and behavior of *Ot. varuna* sp. nov. are provided.

**Keywords.** Oriental Region, male genitalia, female genitalia, diet, behavior.

Hiremath S.R. & Prathapan K.D. 2021. Two new species of the genus *Oryctopterus* (Orthoptera: Stenopelmatidae: Oryctopinae) from India, with some notes on biology. *European Journal of Taxonomy* 748: 108–137. <https://doi.org/10.5852/ejt.2021.748.1349>

## Introduction

Stenopelmatidae Burmeister, 1838 (Jerusalem crickets and allies) are large, mostly wingless Orthoptera Latreille, 1793 occurring in all zoogeographic regions except Australia. The family, currently represented by 39 extant species, is divided into three subfamilies viz. Oryctopinae Kevan, 1986 (five species), Siinae Gorochoy, 1988 (six species) and Stenopelmatinae Burmeister, 1838 (28 species) (Cigliano *et al.* 2019). Limited diversity and disjunct distribution of the family indicate its relic nature.

The family is characterized by a broad and ovoid head, pronotum anteriorly wider than posteriorly, wings absent or developed, four segmented tarsi with pulvilli not widened, first tarsomeres with two pulvilli, absence of tympanal organs, unspined forecoxae, reduced or shortened ovipositor, and basal portion of cerci with bulb-like sensilla on inner side. In general, species of Stenopelmatidae are nocturnal, subterranean, rarely encountered and poorly known. Nearctic, Neotropical and Afrotropical species are better known (Weissman 2001a, 2001b; Weissman *et al.* 2008; Weissman & Bazelet 2013) compared to

those in the Oriental Region. In India, three species are known from only the original description. No information is available on the natural history of Indian Stenopelmatidae.

The subfamily Oryctopinae, represented by five species, is divided into two genera, each placed in a monotypic tribe – *Oryctopus* Brunner von Wattenwyl, 1888 and *Oryctopterus* Karny, 1937. *Oryctopus* is represented by four species (*Op. bolivari* Brunner von Wattenwyl, 1888, *Op. bouvieri* Karny, 1935 and *Op. prodigiosus* Bolívar, 1900, all from south India; and *Op. sordellii* Griffini, 1914 from Sri Lanka). *Oryctopterus* remains monotypic, with the single species *Ot. lagenipes* (Karny, 1935) described from Sri Lanka. These are fairly large, chestnut brown Jerusalem crickets. Life history of the subfamily Oryctopinae, endemic to the Ceylonese subregion of the Oriental Region, is unknown and they are rarely represented in collections. Two new species of *Oryctopterus* are described here, extending the distributional range of the subfamily (Fig. 70) to Kerala State in south India with the first report of the genus in India.

## Material and methods

Eight females of *Ot. varuna* sp. nov. were observed on 10 July 2007, 8 June 2016, 3 and 8 September 2019, 10 January 2020, 3 and 21 March 2020, respectively, by the authors in the Vellayani campus of the Kerala Agricultural University, seven of which were collected while one was only photographed. Eight specimens, including a male, were gathered from the insect collections submitted by the undergraduate students of the College of Agriculture, Vellayani. However, the male specimen was lost in a fire accident after it was studied and illustrated. Three specimens, including two males, were collected by the farm workers of the Instructional Farm, College of Agriculture Vellayani, following a social media campaign. A single specimen of a second new species was borrowed from the University of Agricultural Sciences, Bangalore.

## Dissection

The specimens were relaxed by immersion in a mixture of equal parts of isopropyl alcohol and water, for approx. 20–25 minutes. The abdomen was then separated from the body by inserting an insect pin between the abdomen and metasternum to tear off the tissues connecting them, followed by cutting with corneal scissors. Then, the connections between the tergites and sternites of the abdomen were cut off on one side with corneal scissors. The severed abdomen was boiled in 10% KOH solution for approx. 8 minutes. The cleared abdomen was washed in water and then treated with 1–2 ml of dilute acetic acid to neutralize excess alkali. Another round of washing in water was done to remove excess chemicals. Finally, components of the genitalia were separated completely from sternites, tergites, muscles and other miscellaneous tissues. The vagina was inflated following Yamasako (2015) with a slight modification: instead of petroleum jelly (Yamasako 2015), KY Gel® was used. Two specimens of *Ot. varuna* sp. nov. preserved in alcohol were dissected and the ovaries as well as internal contents of the alimentary canal were examined.

## Photographs

Photographs were taken using a Canon 1300 D camera with an EFs 18–55 mm kit lens for the habitus and with an EFs 55–250 mm telephoto lens for the head and abdominal apex. Both the lenses were coupled with a Raynox DCR–150 macro close-up lens for higher magnification and mounted on a Wemacro rail to obtain several images at different focal planes. The genitalia and contents of the alimentary canal were photographed using a Canon 1300 D camera coupled with an inverted DCR–150 Raynox macro lens mounted on a Zeiss Axiostar plus compound microscope, after removing the head of the microscope. Images were stacked using Zerene stacker ver. 1.04 and edited using Photoshop CC 2019.

Images of the type of *Oryctopterus lagenipes*, made available by the Muséum national d’histoire naturelle (<https://science.mnhn.fr/taxon/species/Oryctopus/lagenipes>), and its original description were studied to ascertain the identity of the species described here.

Descriptive terminology follows O’Brien & Field (2001). Types are deposited in the ICAR-National Bureau of Agricultural Insect Resources, Bangalore, India (NBAIR) and the University of Agricultural Sciences, Bangalore, India (UASB).

### Abbreviations

BS	=	basal rod-shaped sclerites
C	=	costa
DV	=	dorsal valve
LO	=	lateral oviduct
MA <sub>1</sub>	=	first branch of media anterior
RA	=	radius anterior
Rs + M <sub>1</sub>	=	radius sector + first branch of media
Sc	=	subcosta
Sp	=	spermatheca
Spd	=	spermathecal duct
Spg	=	spermathecal gland
St	=	sternite
Vg	=	vagina
Vp	=	vaginal plate
VV	=	ventral valve

### Results

#### *Systematics*

Order Orthoptera Latreille, 1793  
Family Stenopelmatidae Burmeister, 1838  
Subfamily Oryctopinae Kevan, 1986  
  
Genus *Oryctopterus* Karny, 1937

*Oryctopterus* Karny, 1937: 39–41.

*Oryctopterus* – Gorochov 2001: 6, 20, 23–24, 26.

#### Type species

*Oryctopus lagenipes* Karny, 1935.

#### Diagnosis

Male alate, female apterous. Chestnut brown, smooth, shiny. Pronotal margins, legs and abdomen with bristle-like setae. Vertex broad, convex, merged with frons. Eyes small, acutely narrowed ventrally. A pair of lateral fenestra-like transparent portions present between eyes above level of antennal sockets, a similar median fenestra-like portion present a little below level of antennal sockets on vertex. Maxillary palps with four palpomeres: first small, nearly twice as long as broad; all others elongate, subequal, not distinctly thickened. Pronotum strongly convex; lateral and posterior margins narrowly bordered and explanate, anterior margin thickened, neither explanate nor narrowly bordered. Anterior margin distinctly emarginate, forming obtuse angle. Pronotum with deep anteapical transverse impression. Median

longitudinal sulcus narrow, running between anterior and posterior margins, dividing pronotum into left and right halves. Oblique sulcus arises from anterolateral depression on either side, almost reaching near middle of posterior margin. Pronotum on either side with a weak, oblique sulcus originating from posterolateral corner, reaching oblique sulcus originating from anterolateral corner (hardly discernible in *Ot. varuna* sp. nov.). Prosternite broader than long, converging posteriorly, unspined. Mesothoracic basisternum longitudinally sulcate along middle, deeply emarginate posteriorly, convexly raised on either side of middle. Metathoracic basisternum wider than long. All legs with coxa, trochanter, femur unarmed. Foretibia thinner than forefemur, distinctly narrowed distally resembling a bottle, apex of tibia with two pairs of prominent spines on each side, with ventral one on either side longer than dorsal; all tarsomeres unarmed dorsally; first tarsomere longer than rest combined, claw well developed in male, absent in female. Middle tibia thick, convex dorsally, with eight spines arranged in a row around apex: two lateral, one apical, five mesal. Hind tibia with six prominent spines arranged around apex: three lateral, one apical, two mesal, mesal ones larger than rest; dorsolateral and dorsomesal margins of metatibia with row of three to six denticles, prominent in male, distinctly smaller in female. First protarsomere thin, nearly rounded, 1.4–2.4 times as long as rest combined. Cerci hardly exceeding apex of ovipositor valves, basally with bulb-like sensillae at mesal side. Supragenital plate nearly as long as broad. Subgenital plate broader than long.

### Remarks

*Oryctopterus* can be differentiated from *Oryctopus* by the following characters: (1) males fully winged (Figs 1–2, 10–12) (males are apterous in *Oryctopus*), (2) anterior margin of pronotum emarginate forming obtuse angle (only slightly emarginate in *Oryctopus*), (3) anteapical transverse groove on pronotum deeply impressed (weak in *Oryctopus*), (4) foretibia distally narrowed, bottle-shaped (foretibia distally not narrowed in *Oryctopus*), (5) hind tibia with 3–6 small denticles on lateral and mesal margins of dorsal surface (denticles absent on lateral and mesal margins of dorsal surface of hind tibia in *Oryctopus*). Shishodia *et al.* (2010), in their checklist of Indian Orthoptera, wrongly stated that Johns (1997) synonymized *Oryctopterus* with *Oryctopus*. *Oryctopus sordellii* from Sri Lanka probably belongs to *Oryctopterus*, as the original description states that the foretibia are apically narrowed (“*Tibiae anticae apice magis angustatae*”) and the pronotum has a deep anteapical impression (“*Pronotum, excepto sulco subito post marginum anticum transverse impress*”) (Griffini 1914). Moreover, in the original description, it is specified that the holotype is a male that has rudimentary wings (“*rudimenta perminima elytrarum et alarum aegre conspicienda*”), indicating that it could be a subadult.

### *Oryctopterus varuna* sp. nov.

urn:lsid:zoobank.org:act:9E74ACC6-86D2-4A93-812A-5997835415D3

Figs 1–39, 49–52, 70

### Diagnosis

*Oryctopterus varuna* sp. nov. can be differentiated from *Ot. lagenipes* (Fig. 48) from Sri Lanka, by the following characters: (1) clypeus weakly narrowed ventrally in *Ot. varuna* sp. nov., more strongly narrowed ventrally in *Ot. lagenipes*, (2) first foretarsomere about 1.4 times as long as the rest combined in *Ot. varuna* sp. nov., 2.4 times as long as the rest combined in *Ot. lagenipes*, (3) hindwings fully developed in *Ot. lagenipes* (Fig. 48) (much reduced in *Ot. varuna* sp. nov.: Figs 1–2, 10–12). *Oryctopterus varuna* sp. nov. can be differentiated from *Ot. yeshwanthi* sp. nov. based on the structure of the mandible, pronotum and female genitalia, as mentioned under the latter species.



## Etymology

The new species is named after Varuna, the god of rains in Indian mythology. The name is a noun in apposition. This cricket was observed coming out to open areas such as campus roads following rains, hence the name. In the regional dialect, *Ot. varuna* sp. nov. is called ‘Mannunni’, meaning ‘child of soil’. Also nicknamed ‘Thanni-Pillai’, meaning ‘baby of water’, alluding to its emergence following rains.

## Type material

### Holotype

INDIA • ♂; Kerala, College of Agriculture, Vellayani; 18 Mar. 2021; Kumar A. leg.; “HOLOTYPE; *Oryctopterus varuna* sp. nov.; des. Hiremath & Prathapan, 2021”; NBAIR.

### Paratypes

INDIA • 1 ♀\*; same collection data as for holotype; 3 Sep. 2019; S.R. Hiremath leg.; NBAIR • 1 ♀; Kerala, Vellayani; 10 Jul. 2007; K.D. Prathapan leg.; NBAIR • 1 ♀; same collection data as for preceding; 23 Jul. 2015; Ashwathi leg.; NBAIR • 1 ♀; same collection data as for holotype; 7 Jun. 2018; Mithra Mohan leg.; NBAIR • 3 ♀♀; same collection data as for holotype; Student leg.; NBAIR • 1 ♀; same collection data as for holotype; 20 Aug. 2019; Student leg.; NBAIR • 1 ♀\*; same collection data as for holotype; 8 Sep. 2019; S.R. Hiremath leg.; NBAIR • 1 ♀; same collection data as for holotype; 23 Oct. 2019; S.R. Hiremath leg.; NBAIR • 1 ♀; same collection data as for holotype; 3 Mar. 2020; Amritha Hari leg.; NBAIR • 1 ♀; same collection data as for holotype; 21 Mar. 2020; S.R. Hiremath leg.; NBAIR • 1 ♀; same collection data as for holotype; 10 Jan. 2021; Pradeep D leg.; NBAIR • 1 ♂; same collection data as for holotype; 21 Mar. 2021; Pradeep D leg.; NBAIR • 1 ♀; same collection data as for holotype; 6 Nov. 2019; Gouripriya leg.; UASB • 1 ♀; same collection data as for holotype; 10 Jan. 2020; S.R. Hiremath leg.; UASB. (\*Presence of mature eggs confirmed through dissection).

### Other material

INDIA • 1 ♂; same collection data as for holotype; 2019; Student collection leg. (lost after the specimen was studied and illustrated: Fig. 10).

## Description

### Male (Figs 1–17)

**COLORATION.** General color chestnut brown; abdominal tergites, tegmina darker than head, thorax and sternites. Vertex and frons demarcated by M-shaped dark marking; a U-shaped dark stripe extends vertically over vertex (Figs 5–6), a single vertical stripe arises from each eye and a third pair of vertical stripes arise from the gena. Some of this stripes may be indistinct. Clypeus straw brown in distal half, concolorous with frons in proximal half. Labrum concolorous with frons. Tegmina chestnut brown. Abdominal tergites dark brown.

**HEAD.** Vertex strongly convex. Distance between eyes 1.41 times distance between antennal sockets. M-shaped dark marking demarcating vertex, frons depressed. Frons moderately convex between antennal sockets, gradually turning flat and gently depressed ventrally; without wrinkles, except few beneath eye. Eyes with mesal margin concave near antennal socket, lateral margin strongly rounded. Antenna extends well beyond apex of tegmina. Clypeus more or less as long as labrum, trapezoidal, narrowed ventrally, a little wider than long, with a vertical sulcus originating from middle of anterior margin, indistinct in proximal half. Mandibles exceed length of labrum.

**THORAX.** Pronotum 1.76 times wider than long, anteriorly 0.95 times wider than posteriorly (Fig. 6). Lateral margin evenly curved; anterolateral margin convex, forming somewhat obtuse angle with anterior margin. Posterior margin apparently bisinuate. Pronotal anteapical transverse impression

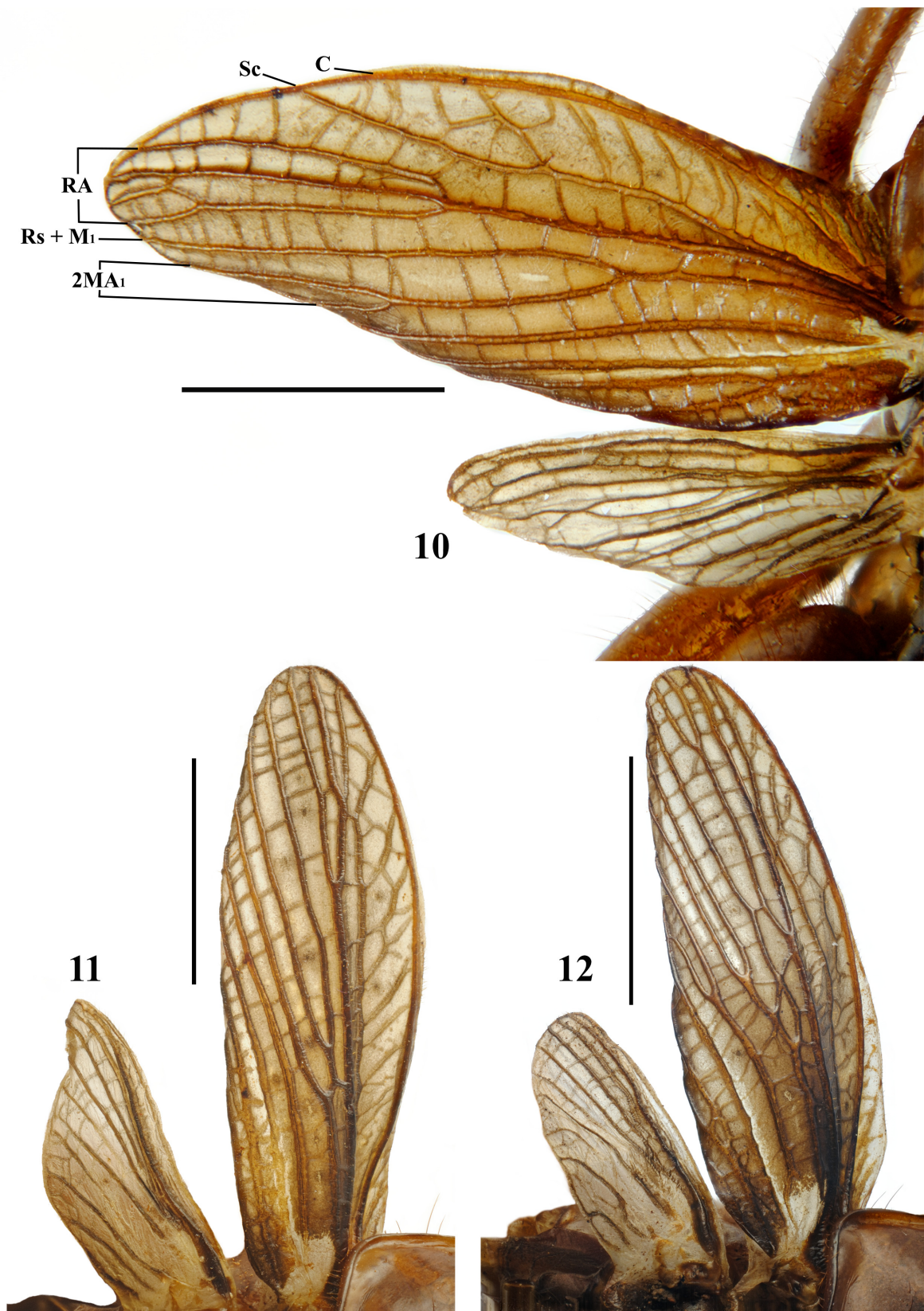


**Figs 1–4.** *Oryctopterus varuna* sp. nov., ♂. 1. Holotype (NBAIR), dorsal habitus. 2–4. Paratypes (NBAIR). 2. Dorsal habitus. 3. Ventral habitus. 4. Lateral view. Scale bars = 10 mm.

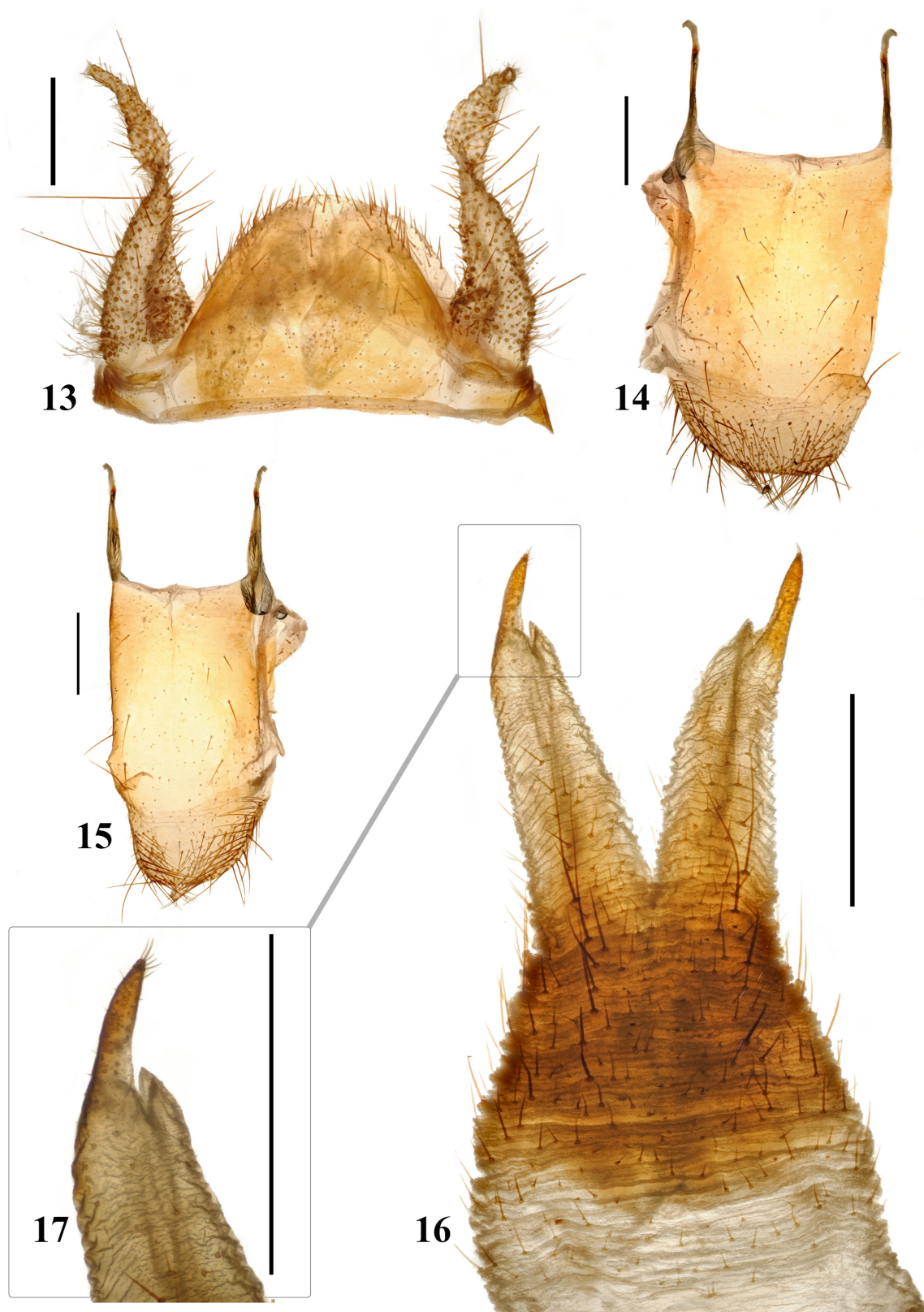


**Figs 5–9.** *Oryctoapterus varuna* sp. nov. Paratype, ♂ (NBAIR). 5. Head, frontal view. 6. Head and pronotum, dorsal view. 7–9. Apex of abdomen. 7. Dorsal view. 8. Ventral view. 9. Lateral view. Scale bars = 5 mm.





**Figs 10–12.** *Oryctopterus varuna* sp. nov., ♂. **10.** Lost specimen. **11.** Holotype (NBAIR). **12.** Paratype (NBAIR). Abbreviations: see Material and methods. Scale bars = 5 mm.



**Figs 13–17.** *Oryctoapterus varuna* sp. nov. Paratype, ♂ (NBAIR). 13. Supragenital plate and cerci. 14. Subgenital plate, dorsal view. 15. Subgenital plate, ventral view. 16. Genital hook and associated structures, ventral view. 17. Genital hook. Scale bars = 1 mm.

merged with anterolateral depressions on either side. Oblique sulcus originating from postero-lateral corner of pronotum shallow. Tegmina not covering supragenital plate and 1–5 preceding tergites. Costa 3-branched, subcosta (Sc) unbranched, reaches between apical  $\frac{1}{4}$  and apex; RA 3 or 4-branched, RS + M<sub>1</sub> unbranched or 2-branched, 2 MA<sub>1</sub> unbranched or 2-branched (Figs 10–12). Hindwings much shorter than tegmina (Figs 10–12). Prosternite wider than long, converging posteriorly, posterior margin emarginate medially, with two pairs of ventral cervical sclerites; lateral cervical sclerites acutely narrowed distally, oblique; prosternite distally with raised setose portion medially. Metathoracic basisternum with posterior margin emarginate medially.

**HIND LEGS.** Coxa depressed ventrally. Dorsolateral and dorsomesal margins of metatibia with a row of 3–6 sharp denticles.

**ABDOMEN** (Figs 7–9). Supragenital plate triangular with inverted Y-shaped sulcus medially, apex rounded (Figs 1–2, 7). Subgenital plate with convex posterior margin (Figs 14–15). Subgenital plate constricted in distal third, apex rounded; with a pair of long apodemes proximally (Figs 14–15).

**GENITALIA** (Figs 13–14). Genital hooks long, pointed, gently curved, with 6 setae on apex.

**MEASUREMENTS** (mm) (n = 3). Body length: 27.50–37.68, head width: 7.55–7.89, pronotal length: 4.42–4.73, pronotal width: 8.08–8.30, forefemur: 8.94–9.11, foretibia: 9.88–10.98, foretarsi: I. 3.39–4.31, II. 0.54–1.46, III. 1.39–1.46, IV. 1.08–1.16, midfemur: 7.76–8.11, midtibia: 8.30–9.01, midtarsi: I. 1.85–3.08, II. 1.08–1.16, III. 1.16–1.39, IV. 1.31–2.31, hindfemur: 13.17–13.35, hindtibia: 13.47–14.81, hindtarsi: I. 2.46–4.54, II. 1.46–1.62, III. 1.54–1.85, IV. 1.54–2.70. Proportionate length of forefemur: foretibia: foretarsi: midfemur: midtibia: midtarsi: hindfemur: hindtibia: hindtarsi as follows: 1.00: 1.09–1.23: 0.72–0.92: 0.87–0.89: 0.92–0.98: 0.59–0.89: 1.46–1.48: 1.49–1.66: 0.77–1.19. Proportionate length of tarsomeres I–IV: foreleg – 1.00: 0.16–0.34: 0.32–0.41: 0.25–0.34; midleg – 1.00: 0.38–0.58: 0.45–0.66: 0.70–0.75; hindleg – 1.00: 0.36–0.59: 0.39–0.63: 0.59–0.63.

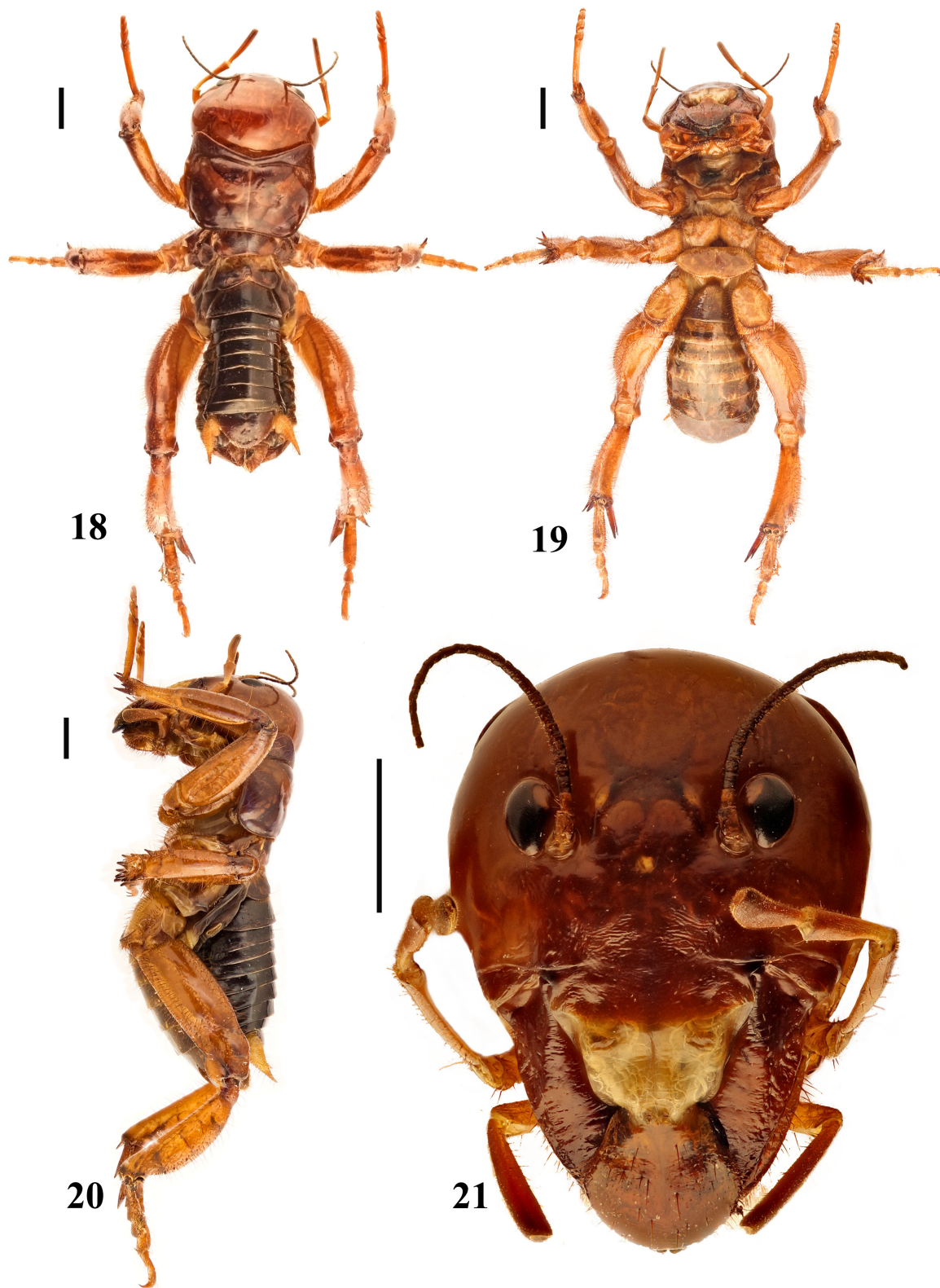
#### **Female** (Figs 18–39, 49–52)

**COLORATION.** General color chestnut brown; abdomen darker than head and thorax; legs lighter than thorax. Vertex and frons demarcated by M-shaped dark marking; a U-shaped dark stripe extends vertically over vertex (Fig. 21), a single vertical stripe arise from each eye and a third pair of vertical stripes arise from the gena. The stripes may be obliterated in some specimens. Clypeus straw brown, distinctly lighter than frons. Labrum proximally concolorous with clypeus, gradually turning darker towards distal area. Thoracic sternites lighter than tergites.

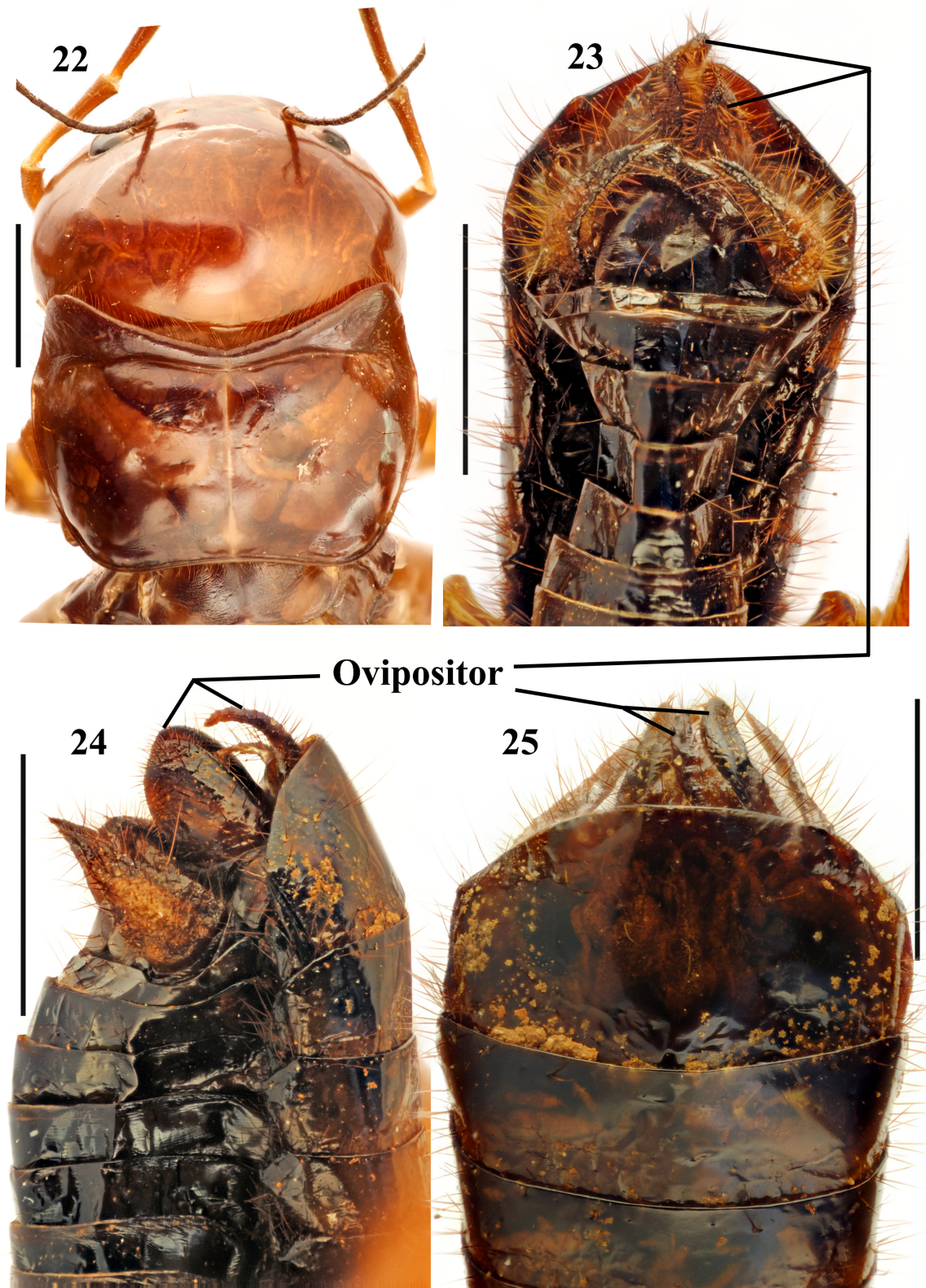
**HEAD.** Vertex strongly convex. Distance between eyes 1.27–1.40 times distance between antennal sockets. Frons moderately convex between antennal sockets, gradually turning flat to depressed ventrally; minutely wrinkled in ventral half. Eyes with mesal margin concave near antennal socket, lateral margin strongly rounded. Antenna just crosses anteapical sulcus of pronotum. Clypeus a little shorter than labrum, trapezoidal, narrowed ventrally, a little over twice wider than long, with a vertical sulcus originating from middle of anterior margin, depressed on either side of vertical sulcus. Mandibles exceed length of labrum.

**THORAX.** Pronotum 1.67–1.79 times wider than long, anteriorly 1.12–1.26 times wider than posteriorly (Fig. 22). Lateral margin evenly curved; anterolateral margin convex, forming somewhat obtuse angle with anterior margin. Posterior margin concave medially. Pronotal anteapical transverse impression merged with anterolateral depressions on either side. Oblique sulcus originating from postero-lateral corner of pronotum not discernible. Prosternite wider than long, converging posteriorly, posterior margin emarginate medially, with two pairs of ventral cervical sclerites; lateral cervical sclerites



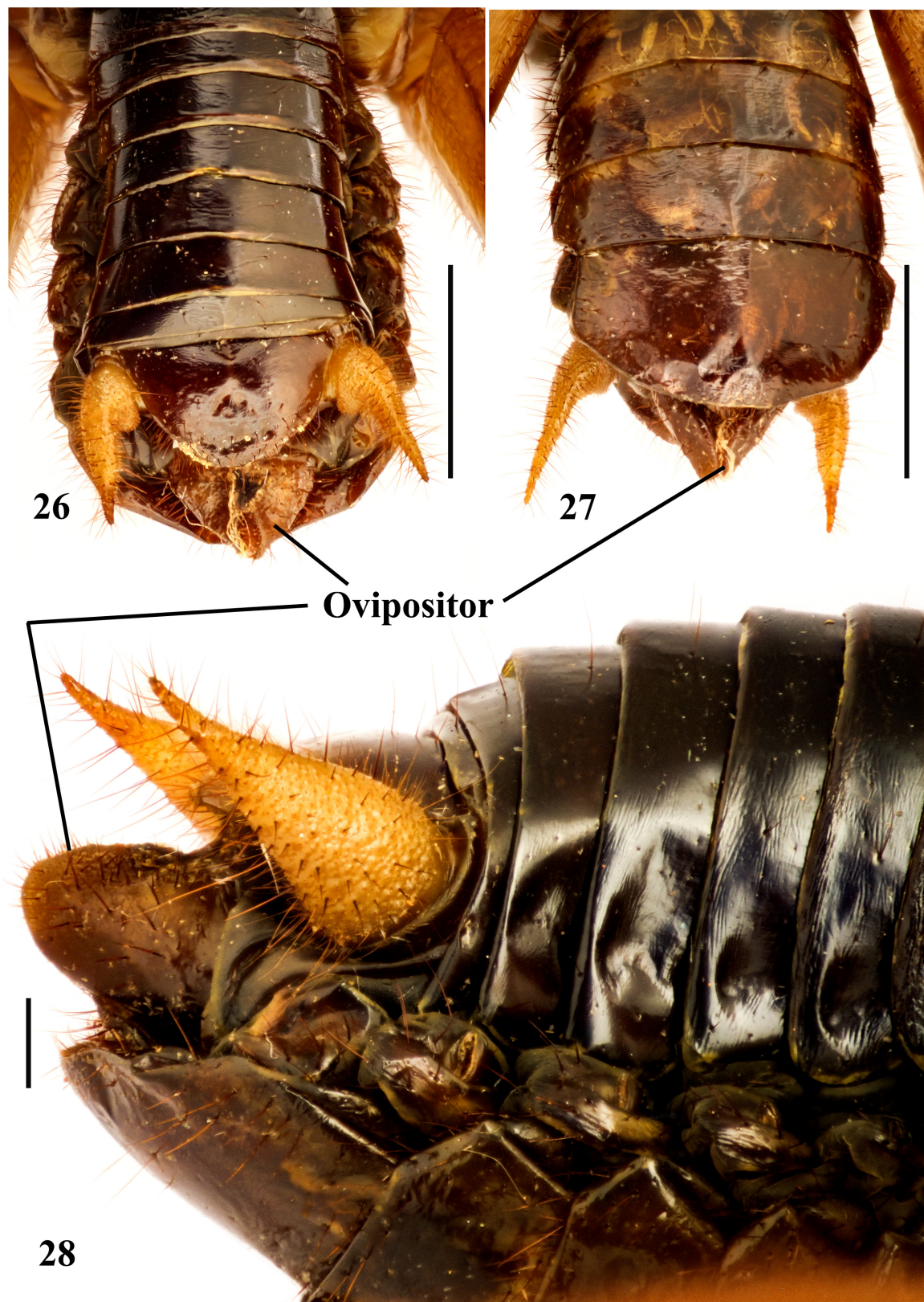


**Figs 18–21.** *Oryctopterus varuna* sp. nov. Paratype, ♀ (NBAIR). **18.** Dorsal habitus. **19.** Ventral habitus. **20.** Lateral habitus. **20.** Head, frontal view. Scale bars = 5 mm.



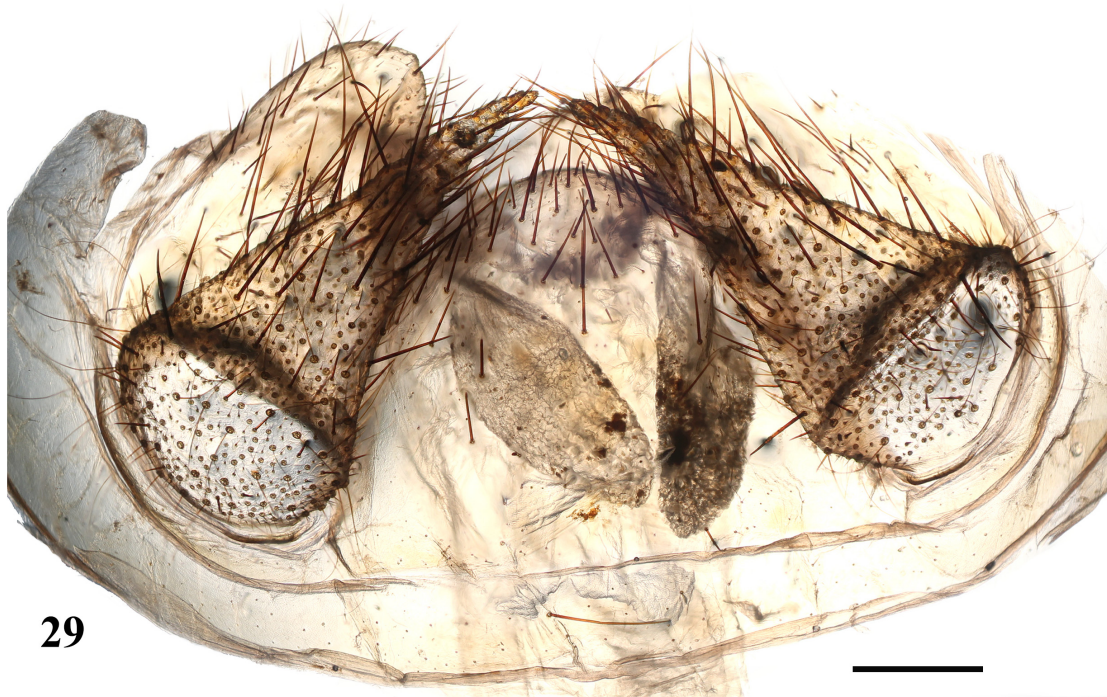
**Figs 22–25.** *Oryctopterus varuna* sp. nov. Paratype, ♀ (NBAIR). **22.** Head and pronotum, dorsal view. **23–25.** Apex of abdomen in preserved specimen. **23.** Dorsal view. **24.** Lateral view. **25.** Ventral view. Scale bars = 5 mm.





**Figs 26–28.** *Oryctopterus varuna* sp. nov. Apex of male abdomen in freshly killed specimen (NBAIR).  
26. Dorsal view. 27. Ventral view. 28. Lateral view. Scale bars: 26–27 = 5 mm; 28 = 1 mm.





**Figs 29–31.** *Oryctopterus varuna* sp. nov. Paratype, ♀ (NBAIR). **29.** Supragenital plate and cerci, dorsal view (macerated specimen, through transmitted light). **30.** Supragenital plate, cerci and alimentary canal, dorsal view (macerated specimen). **31.** Supragenital plate, cerci and alimentary canal, ventral view (macerated specimen). Scale bars = 1 mm.

acutely narrowed distally, oblique; prosternite distally with raised setose portion medially. Metathoracic basisternum with posterior margin emarginate medially.

**HIND LEGS.** Coxa depressed ventrally. Dorsolateral and dorsomesal margins of metatibia with a row of five small denticles, proximal one or two hardly noticeable.

**ABDOMEN** (Figs 23–28). Supragenital plate almost semicircular (Figs 23, 26, 29–31). Subgenital plate with arcuate posterior margin (Figs 25, 27).

**GENITALIA** (Figs 32–36). Ovipositor with dorsal valve broader and slightly longer than ventral one. Base of ventral valve with two pairs of obliquely placed rod shaped sclerites, inner one shorter than outer. Vagina longer than dorsal valve, conical with lateral sides each bearing an elongate, rectangular, unsclerotized vaginal plate at middle. Spermathecal duct elongate, narrow tube with spindle shaped bulb near middle, entering vagina dorsally at middle. Median oviduct merged with ventral wall of vagina. Spermatheca spherical, with smooth integument. Spermathecal gland tubular, narrower and distinctly longer than spermathecal duct. Spermathecal gland with two spindle shaped bulbs near basal third and slightly elongate, spindle shaped bulb at apex (Fig. 36). Sternite VIII transverse with apical margin broadly rounded and weakly projected at middle, integument concentrated with elongate red-brown setae (Fig. 34).

**MEASUREMENTS** (mm) (n = 4). Body length: 26.02–37.64, head width: 8.62–12.57, pronotal length: 5.13–7.29, pronotal width: 8.57–13.05, forefemur: 7.71–10.13, foretibia: 9.95–13.77, foretarsi: I. 4.42–6.05, II. 1.01–1.78, III. 0.86–1.49, IV. 0.67–1.01, midfemur: 6.63–9.23, midtibia: 7.44–11.24, midtarsi: I. 2.59–3.60, II. 0.82–1.34, III. 0.96–1.25, IV. 1.63–2.30, hindfemur: 10.23–14.20, hindtibia: 9.53–13.62, hindtarsi: I. 3.17–5.38, II. 1.20–1.68, III. 1.20–1.68, IV. 1.92–2.88. Proportionate length of forefemur: foretibia: foretarsi: midfemur: midtibia: midtarsi: hindfemur: hindtibia: hindtarsi as follows: 1.00: 1.16–1.36: 0.89–1.09: 0.70–0.91: 0.94–1.11: 0.76–0.84: 1.27–1.40: 1.15–1.34: 0.97–1.05. Proportionate length of tarsomeres I–IV: foreleg – 1.00: 0.23–0.29: 0.19–0.25: 0.15–0.17; midleg – 1.00: 0.32–0.39: 0.29–0.37: 0.47–0.68; hindleg – 1.00: 0.27–0.45: 0.27–0.41: 0.43–0.65.

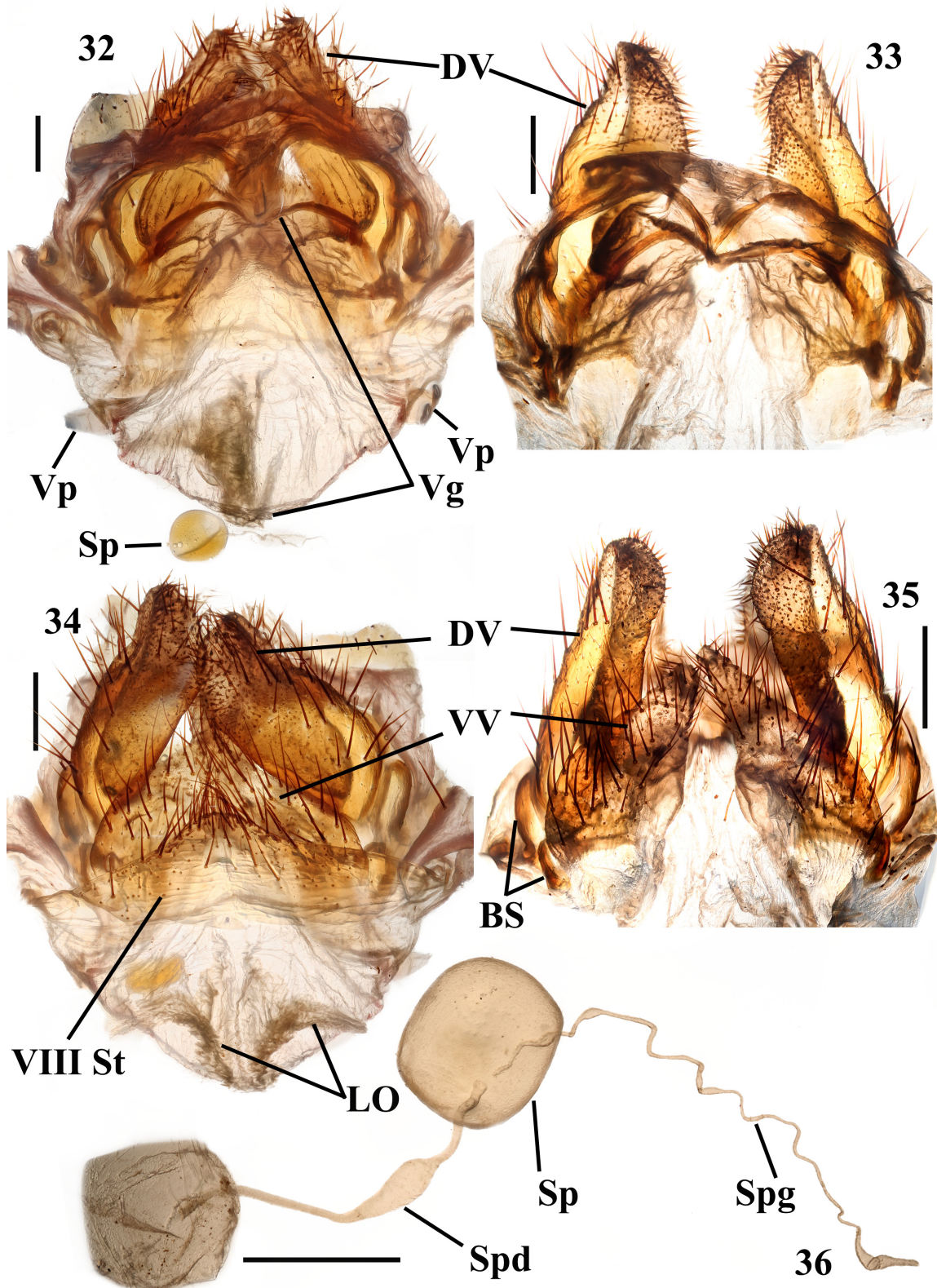
### Sexual dimorphism

Male (27.50–37.68 mm) apparently subequal in length to the female (26.02–37.64 mm), with fully developed wings, female apterous and stouter. Claws of forelegs well developed in male, absent in female. Spines on metatibia well developed and sharp in male, much reduced or hardly discernible in the female.

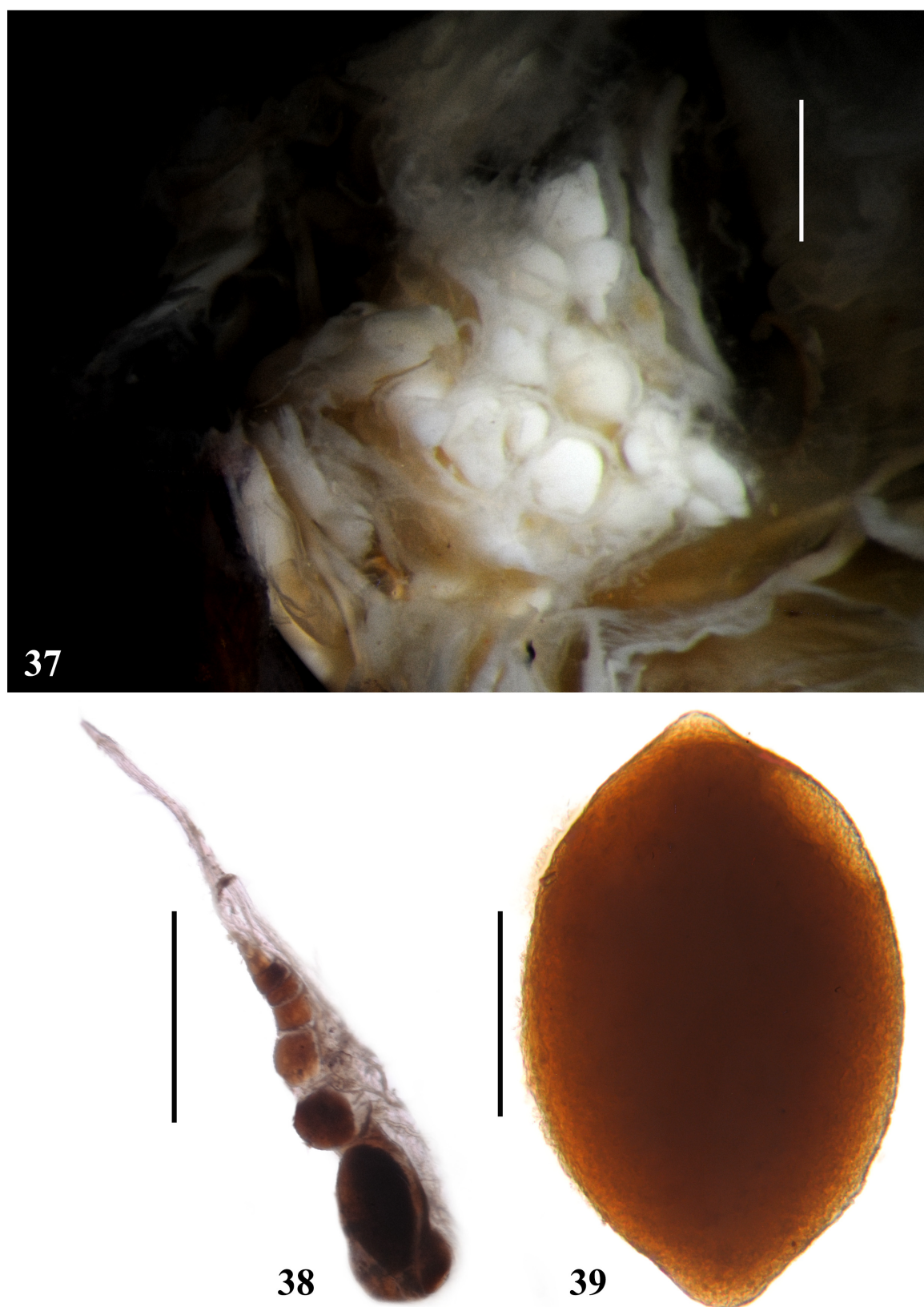
### Remarks

*Oryctopterus varuna* sp. nov. and *Ot. lagenipes* were geographically isolated multiple times in the Quarternary and most recently during the separation of Sri Lanka from south India, around 7500 years ago with the Holocene rises in sea level (Gunatilaka 2000). Poorly developed hind wings indicate that *Ot. varuna* sp. nov. could be flightless, despite being alate. Wing venation varies considerably, in the branching pattern, shape of veins and cross veins (Figs 10–12). Béthoux (2012) showed that in king crickets, raspy crickets and weta, wing venation vary greatly within species and several species delimited based on wing venation are synonyms. Ross (2012), who studied cockroaches, proved that forewings of a cockroach species vary considerably; even the left and right wings on the same specimen are slightly different. According to Ross (2012), since forewings in cockroaches are not used for active flight, the positions of the veins, which are important for the aerodynamics and flexing of the wings, vary greatly. The intraspecific variation in the wing venation in *Oryctopterus*, could be the outcome of a flightless, subterranean mode of life.





**Figs 32–36.** *Oryctopterus varuna* sp. nov., female genitalia. Paratype (NB AIR). 32. Dorsal view. 33. Dorsal view (valves separated). 34. Ventral view. 35. Ventral view (without sternite VIII). 36. Spermatheca. Abbreviations: see Material and methods. Scale bars = 1 mm.



**Figs 37–39.** Ovary, ovarioles and egg of *Oryctoapterus varuna* sp. nov. Paratype, ♀ (NBAIR). **37.** Ovary. **38.** Ovariole. **39.** Egg. Scale bars: 37–38 = 1 mm; 39 = 0.1 mm.



*Oryctopterus varuna* sp. nov. is only known from the Vellayani campus of the Kerala Agricultural University (8°25'46.3" N, 76°59'07.8" E, 39 m elevation). Description of this new species underscores the importance of biodiversity conservation in periurban areas, as reckless development is taking its toll on all life forms in every imaginable habitat, throughout India and elsewhere.

### Notes on biology

#### Female reproductive system

Ovaries were paired and each ovary (Fig. 37) consists of more than 10 panoistic ovarioles, each ovariole containing about six eggs (Fig. 38). A total of about 175–200 eggs were present inside the ovaries of an individual. Mature eggs are lemon-shaped (Fig. 39). Fully developed eggs in the ovary indicate that the dissected as well as the other examined specimens, which are morphologically identical, are probably all adults.

#### Habitat

Vellayani campus of the Kerala Agricultural University is the sole known habitat of the new species. The total area of the campus is about 2.52 km<sup>2</sup>. This is a highly populated residential area and the open lands are under cultivation with various agricultural crops. Chemical fertilizers and pesticides are used to raise the crops. The campus has a network of roads connecting academic and residential buildings and other facilities. The soil type is red loam and the average annual rainfall is 1577 mm.

#### Seasonality

Most females were seen walking on the open campus roads during or after a downpour, both during day and night. One individual was caught around midday on 8 September 2019, when it was bright and sunny. Emergence of females of *Ot. varuna* sp. nov. coincides with the south-west monsoon rains during June to September. However, males are extremely rare and two individuals were collected following summer rains during the peak summer of March 2021.

#### Food habits as indicated by the gut contents (Figs 40–47)

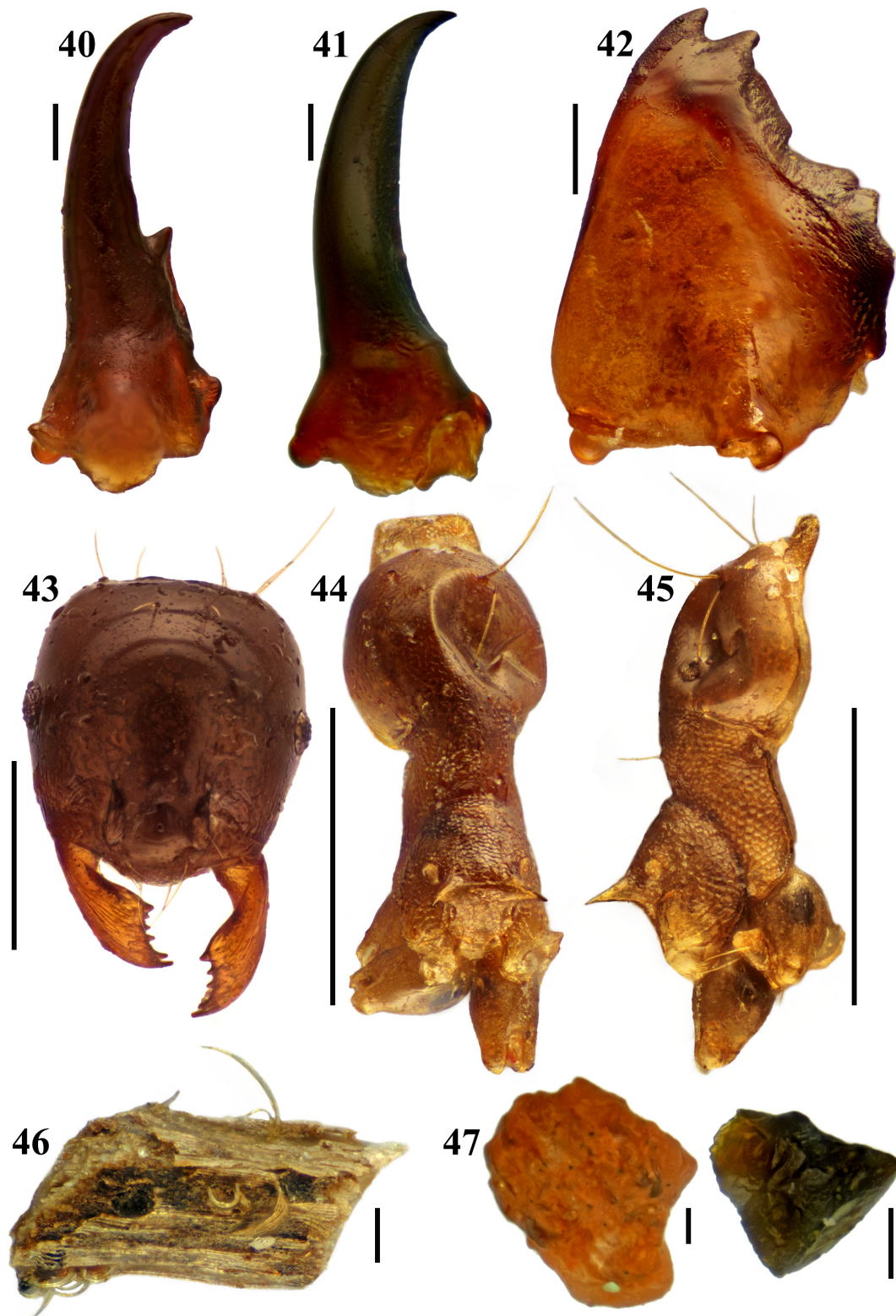
Examination of the gut contents of three of the specimens revealed the presence of mandibles of mandibulate soldiers (Figs 40–41) and workers (Fig. 42) of the termite *Odontotermes* sp. (Blattaria, Termitidae); and the body parts, including head (Fig. 43), thorax (Figs 44–45), and abdomen of ants (probably *Pheidole* sp., Hymenoptera, Formicidae). Interestingly, a piece of the stem of a plant (0.58 mm × 0.43 mm) (Fig. 46) and sand particles (0.24–0.62 mm diameter) (Fig. 47) were also observed inside the gut.

#### Behavior

The new species is a ‘heel-walker’ (Fig. 49, Supp. file 3). They walk on the distal tip of tibiae with the foretarsi always held raised, while the mid- and hind tarsi are in close proximity to the ground, yet not touching it while walking. However, when not moving, all the tarsi may touch the ground. While walking, the long maxillary palpi are held forward and constantly touch the objects in the foreground in tandem. South African Jerusalem Crickets are known to hop and climb vegetation (Weissman & Bazelet 2013) while some of the New World species exhibit drumming (abdomen striking against the substrate) (Weissman 2001a). However, no such behaviors were observed in *O. varuna* sp. nov. When a female was held above the ground level on a flat substrate, it rather tumbled down instead of hopping. It also failed to climb up sticks on which it was placed. A male was observed flapping wings and performing short jumps of about 0.3 m.

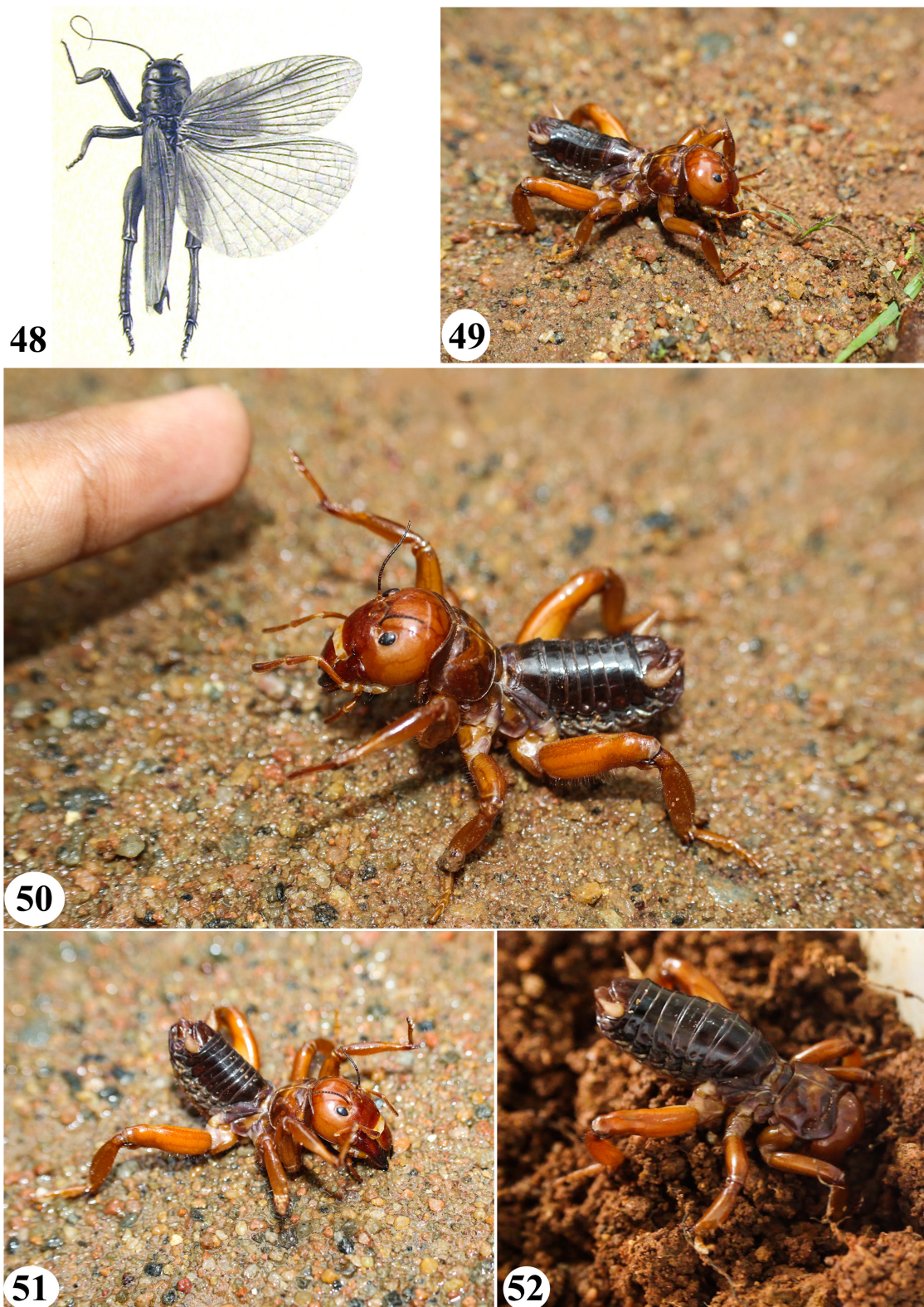
#### Defense

*Oryctopterus varuna* sp. nov. displayed intricate defensive postures when intimidated. Confronted from the front, the cricket sprang into a pouncing posture, raised its forelegs and waved in mid-air,



**Figs 40–47.** Gut contents of *Oryctoapterus varuna* sp. nov. **40–41.** Mandibles of *Odontotermes* sp. soldier. **42.** Mandible of *Odontotermes* sp. worker. **43.** Head of *Pheidole* sp. **44–45.** Thorax of *Pheidole* sp. dorsal and lateral views. **46.** Piece of stem. **47.** Pebbles. Scale bars: 40–42, 46–47 = 0.1 mm; 43–45 = 0.5 mm.





**Figs 48–52.** *Oryctopterus* species. **48.** *Oryctopterus lagenipes* (Karny, 1935), allotype, ♂, from Colombo, Sri Lanka (Karny 1937: pl. 7 fig. 2; available from Orthoptera species file). **49–52.** *Oryctopterus varuna* sp. nov. **49.** Walking posture. **50.** Defending a frontal attack. **51.** Abdomen and fore-legs raised when poked on thorax. **52.** Initiation of digging. Images not to scale.



the mandibles opened widely, as if ready to bite (Fig. 50, Supp. file 1). When approached from the anterolateral side, it raised the front leg on that side to defend. However, when the animal was poked on the thorax, in addition to the forelegs, the abdomen also was raised, to startle the attacker (Fig. 51). When an individual is pinned down with the index finger firmly pressed on the thorax, the whole body was flexed and all legs were raised and started kicking to fend off the assailant. They inflicted painful bites when handled. Weissman (2001a) reported that New World Stenopelmatine, when confronted, frequently flip on their back, with mandibles agape, or can rear up.

### Burrowing

Burrowing was observed by releasing an adult female into a 23.50 cm high, 21.50 cm wide polypropylene tub filled with loose soil up to  $\frac{2}{3}$  the height of the tub. Mainly head and legs are used in burrowing. To begin with, the forelegs were firmly held against the ground to anchor the body, then the head was bent down, moving forward and backward to dig up the soil, with the mandibles acting like a shovel (Fig. 52, Supp. file 2). The dug-up soil was then pushed backwards and sideways with hindlegs and midlegs respectively. In the laboratory, it made a burrow that was vertical initially but turned oblique, then horizontal and nearly parallel to the surface. Observed behavior suggests that the Oryctopinae are subterranean, inhabiting underground burrows.

### *Oryctopterus yeshwanthi* sp. nov.

urn:lsid:zoobank.org:act:82E702C9-26A7-485A-BC72-097B4B93D8B8

Figs 53–70

### Diagnosis

*Oryctopterus yeshwanthi* sp. nov. superficially resembles *Ot. varuna* sp. nov. However, *Oryctopterus yeshwanthi* sp. nov. can be easily recognized by the longer mandibles with five visible denticles (in female of *Ot. varuna* sp. nov., mandibles extend beyond labrum, but are shorter than in *Ot. yeshwanthi* sp. nov. and no denticles are externally visible); lateral margins of pronotum strongly curved in anterior third and nearly straight posteriorly (in *Ot. varuna* sp. nov., the lateral margin of pronotum is rather evenly curved), pronotum in *Ot. yeshwanthi* sp. nov. is posteriorly narrower than in *Ot. varuna* sp. nov. and the oblique sulcus originating from postero-lateral corners is well developed (pronotum is less strongly narrowed posteriorly in *Ot. varuna* sp. nov. and the oblique sulcus originating from postero-lateral corners of pronotum is hardly discernible); and bean-shaped spermatheca with reticulated integument (spermatheca spherical with smooth integument in *Ot. varuna* sp. nov.). Moreover, the two species can also be separated based on the structure of the spermathecal duct, gland and sternite VIII. Spermathecal duct with cylindrical bulb post-medially (spermathecal duct with spindle shaped bulb near its middle in *Ot. varuna* sp. nov.); spermathecal gland shorter than spermathecal duct, with two bulged portions (spermathecal gland distinctly longer than spermathecal duct in *Ot. varuna* sp. nov.); apical margin of sternite VIII indistinctly emarginated medially with dorsal infolding (apical margin of sternite VIII broadly rounded and weakly projected at its middle in *Ot. varuna* sp. nov.). Supragenital plate and subgenital plate in the dry, preserved specimen were shrunk and deformed, hence maceration of specimens was required to ascertain the actual structure and shape.

*Oryctopterus yeshwanthi* sp. nov. resembles *Ot. lagenipes* in having dark stripes on head, which are similar to those in the latter. The sulci on pronotum are also more or less similar in both the species. However, *Ot. yeshwanthi* sp. nov. can be separated from *Ot. lagenipes* based on clypeus which is transverse (trapezoidal in *Ot. lagenipes*), longer mandibles (shorter in *Ot. lagenipes*), strongly curved lateral margins of pronotum in anterior third (evenly curved in *Ot. lagenipes*).

## Etymology

This species is named after H.M. Yeshwanth, University of Agricultural Sciences, who collected the single known specimen.

## Type material

### Holotype

INDIA • ♀; Kerala, Kallar; 12 Nov. 2014; H.M. Yeshwanth leg.; “HOLOTYPE; *Oryctopterus yeshwanthi* sp. nov.; des. Hiremath & Prathapan, 2019”; UASB.

## Description

### Female (Figs 53–69)

**COLORATION.** General color chestnut brown; abdominal tergites darker than head and thorax, abdominal sternites lighter than tergites; legs not distinctly lighter than thorax. Vertex and frons demarcated by M-shaped dark marking; a U-shaped dark stripe, originating from M-shaped mark, extends vertically over vertex; beneath M-shaped mark, a pair of inverted, drop-shaped lighter areas present; a broader stripe originates from dorsomesal margin of eye, extending vertically over vertex. A third pair of dark stripes extend between subgenal suture and occiput on either side of head. Clypeus concolorous with vertex, except anterior margin lighter. Labrum slightly darker than vertex. Thoracic sternites apparently lighter than tergites.

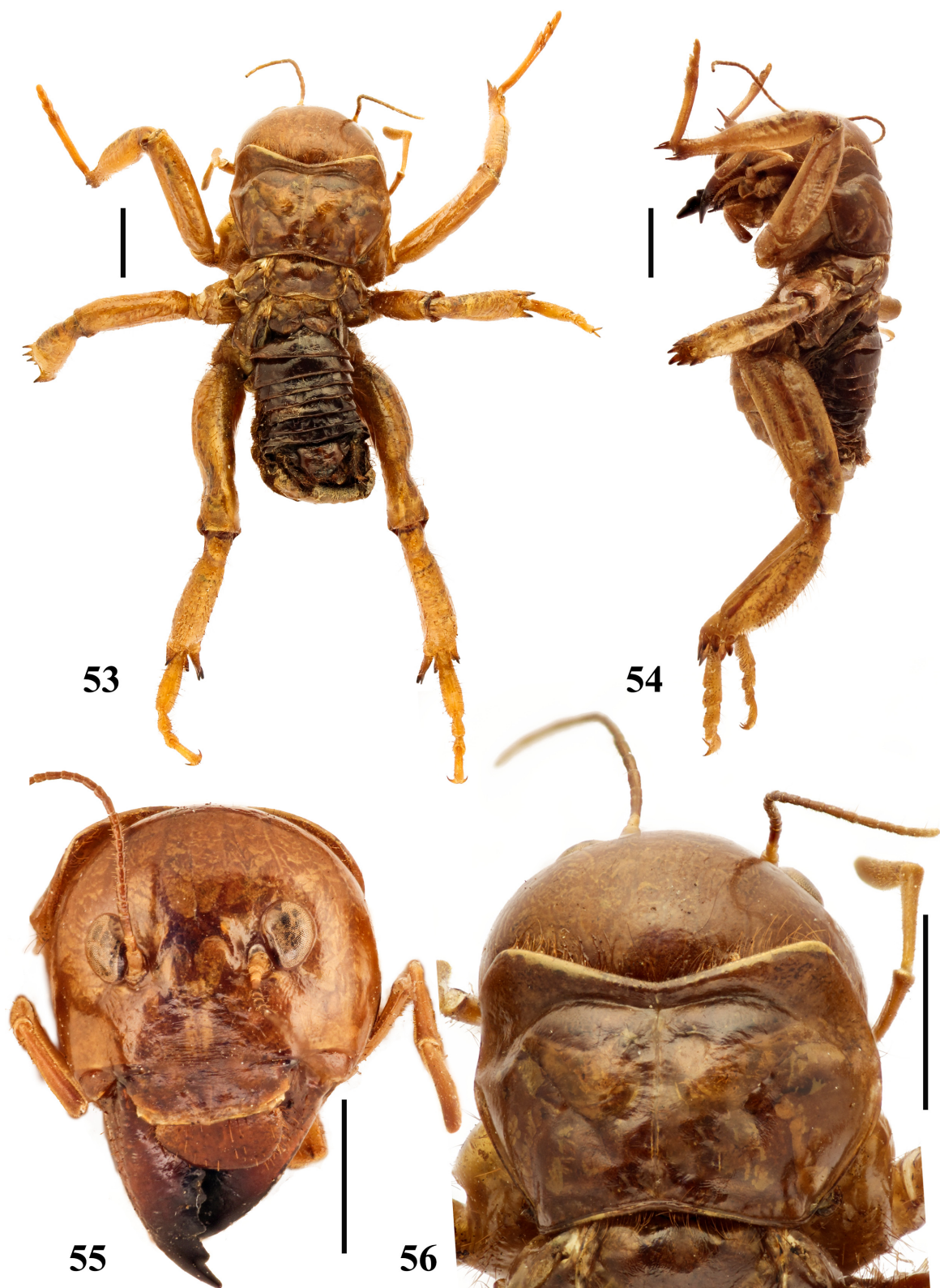
**HEAD** (Fig. 55). Vertex strongly convex. Distance between eyes 1.38 times distance between antennal sockets. Frons moderately convex between antennal sockets, gradually turning flat, then depressed ventrally; minutely transversely wrinkled ventrally. Eyes with mesal margin concave near antennal socket, lateral margin strongly rounded. Clypeus a little shorter than labrum, rectangular, strongly transverse, nearly three times wider than long, with an indistinct vertical carina in middle, surface hardly depressed on either side of carina. Visible part of mandibles about two times longer than labrum, with five denticles visible.

**THORAX.** Pronotum (Fig. 56) 1.64 times wider than long, anteriorly 1.26 times wider than posteriorly. Lateral margin strongly curved near anterior third, then becomes nearly straight posterior to that; anterolateral margin convex, forming somewhat obtuse angle with anterior margin. Posterior margin concave medially. Pronotal anteapical transverse impression merged with anterolateral depressions on either side. Oblique sulcus originating from postero-lateral corner of pronotum well developed. Prosternite wider than long, converge posteriorly, posterior margin emarginate medially, with two pairs of ventral cervical sclerites; lateral cervical sclerites acutely narrowed distally, oblique; prosternite distally with setose, raised portion medially. Metathoracic basisternum with posterior margin emarginate medially.

**HIND LEGS.** Coxa depressed ventrally. Metatibia with dorsolateral margin with three small denticles, dorsomesal margin with a row of four small denticles.

**ABDOMEN** (Figs 57–60). Supragenital plate wider than long, semicircular (Figs 61–62). Subgenital plate transverse, with posterior margin straight in middle (Figs 60, 63).

**FEMALE GENITALIA** (Figs 64–69). Ovipositor with dorsal valve broader and slightly longer than ventral. Base of ventral valve with two pairs of obliquely placed thick sclerites; inner one short, oblong; outer one longer. Vagina longer than dorsal valve in length, semicircular with lateral sides each bearing an elongate, unsclerotized vaginal plate at middle. Spermathecal duct elongate, narrower in proximal half, then distinctly widened beyond middle up to distal third quarter, entering vagina dorsally, at middle. Median oviduct merged with ventral wall of vagina. Spermatheca nearly bean-shaped, surface with



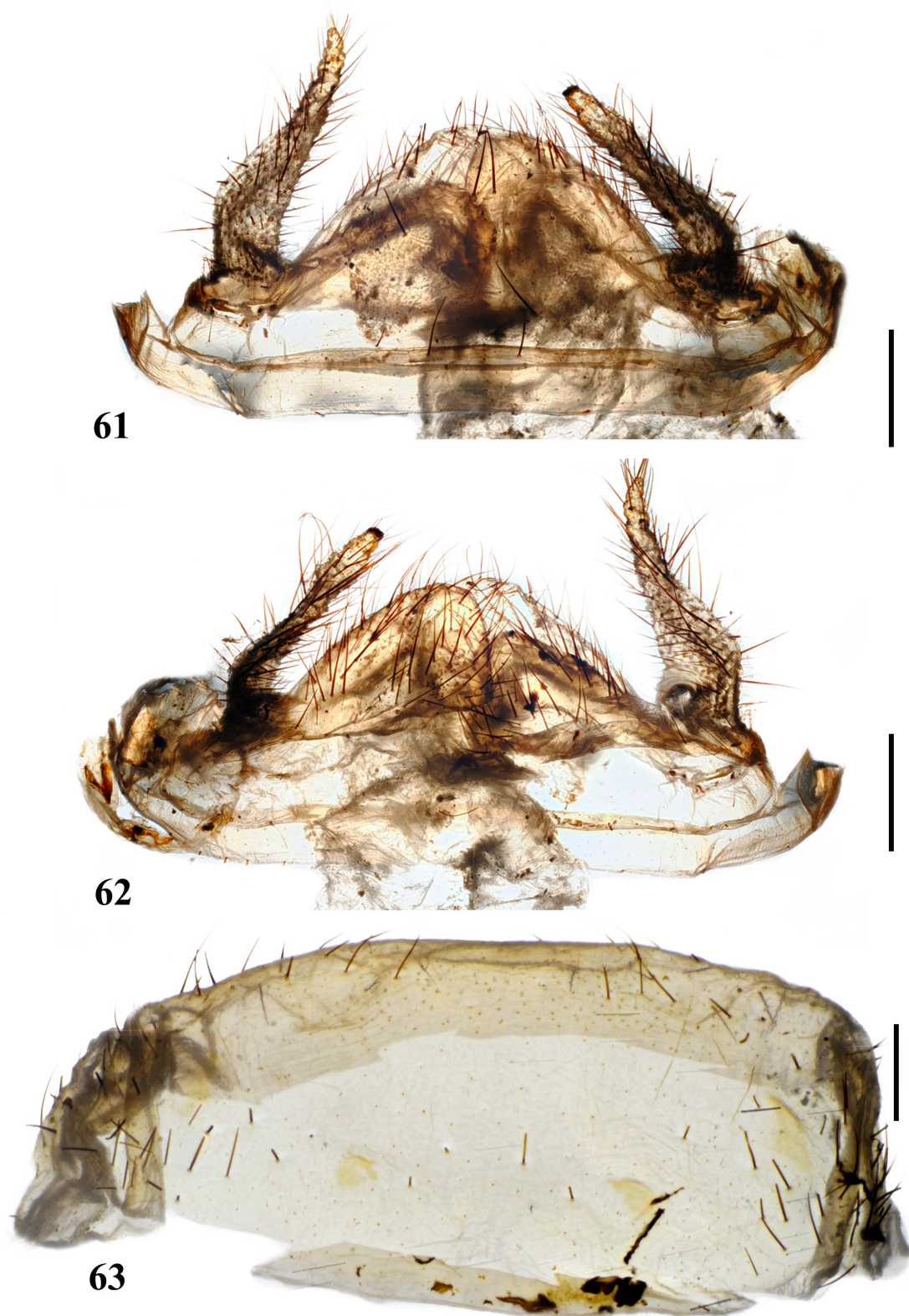
**Figs 53–56.** *Oryctoapterus yeshwanthi* sp. nov. Holotype, ♀ (UASB). **53.** Dorsal habitus. **54.** Lateral habitus. **55.** Head, frontal view. **56.** Head and pronotum in dorsal view. Scale bars = 5 mm.



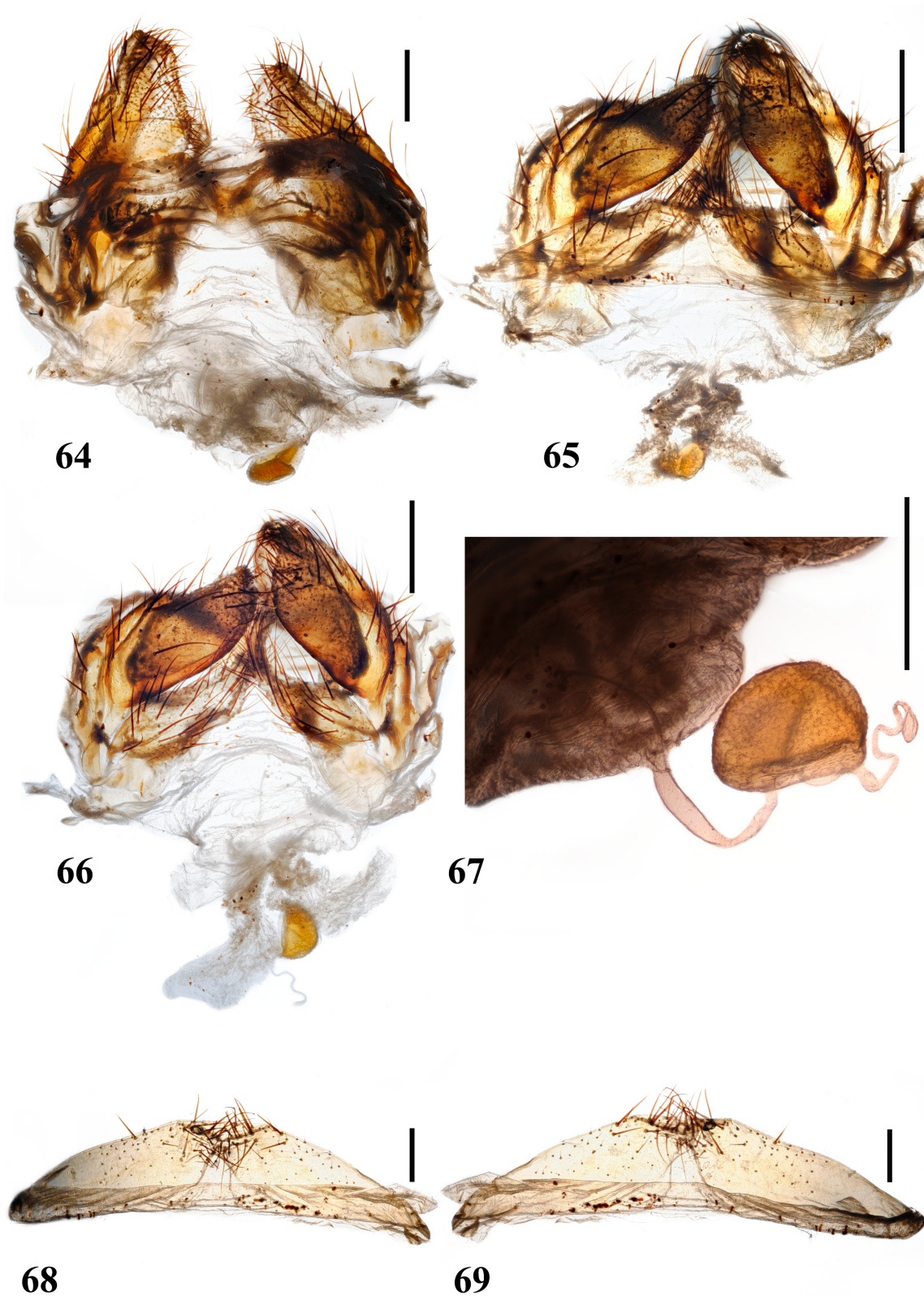


**Figs 57–60.** *Oryctopterus yeshwanthi* sp. nov. Holotype, ♀ (UASB). **57.** Abdomen, dorsal view. **58.** Abdomen, lateral view. **59.** Supragenital plate. **60.** Subgenital plate. Scale bars = 1 mm.





**Figs 61–63.** *Oryctopterus yeshwanthi* sp. nov. Female genitalia. Holotype (UASB). **61.** Supragenital plate, dorsal view (macerated specimen). **62.** Supragenital plate, ventral view (macerated specimen). **63.** Subgenital plate, dorsal view (macerated specimen). Scale bars = 1 mm.



**Figs 64–69.** *Oryctopterus yeshwanthi* sp. nov., female genitalia. Holotype (UASB). **64.** Dorsal view. **65.** Ventral view with VIII sternite intact. **66.** Ventral view without VIII sternite. **67.** Spermatheca. **68.** VIII Sternite, dorsal view. **69.** VIII Sternite, ventral view. Scale bars = 1 mm.

depressions, integument reticulated (Fig. 67). Spermathecal gland elongate, shorter than spermathecal duct, bulged near proximal third and distal end. Sternite VIII (Figs 68–69) transverse, in ventral view with apical margin indistinctly emarginate medially, with a dorsal infolding bearing several elongate setae; in dorsal view distal margin emarginate medially.

MEASUREMENTS (mm) (n = 1). Body length: 25.15, head width: 9.87, pronotal length: 6.20, pronotal width: 10.18, forefemur: 8.64, foretibia: 11.00, foretarsi: I. 5.04, II. 1.44, III. 1.25, IV. 0.82, midfemur: 7.21, midtibia: 9.08, midtarsi: I. 3.74, II. 1.39, III. 1.20, IV. 1.92, hindfemur: 12.58, hindtibia: 11.83, hindtarsi: I. 4.13, II. 1.44, III. 1.25, IV. 2.50. Proportionate length of fore-femur: foretibia: foretarsi: midfemur: midtibia: midtarsi: hindfemur: hindtibia: hindtarsi as follows: 1.00: 1.27: 0.99: 0.83: 1.05: 0.95: 1.46: 1.37: 1.08. Proportionate length of tarsomeres I–IV: foreleg – 1.00: 0.29: 0.25: 0.16; midleg – 1.00: 0.37: 0.32: 0.51; hindleg – 1.00: 0.35: 0.30: 0.61.

#### Male

Unknown.

#### Notes on biology

##### Habitat

Kallar, the type locality of the new species, is on the lower reaches of the Agasthyamalai Biosphere Reserve at the southern end of the Western Ghats biodiversity hotspot. Most of Kallar still retains the forest cover and is slated to form part of the newly proposed Ponmudi Wildlife Sanctuary.

##### Behavior

The single specimen was picked up on a bright sunny day (H.M. Yeshwanth pers. com., 18 September 2019).

#### Discussion

Both the south Indian species of *Oryctopterus* appear to be highly restricted in distribution. Mobility and dispersal of Oryctopinae may be restricted as they are mostly wingless and are unable to jump or run. Vandergast *et al.* (2007, 2009), who studied an endemic *Stenopelmatus* Burmeister, 1838 Jerusalem cricket in California, showed that genetic connectivity among populations has been disrupted by urban development and flightless arthropods are especially sensitive to habitat fragmentation. One of the new species described here, *Ot. varuna* sp. nov., is known only from a single campus and the distribution of *Ot. yeshwanthi* sp. nov. is probably limited also. Hence, they should be accorded special conservation status until their ranges are better determined.

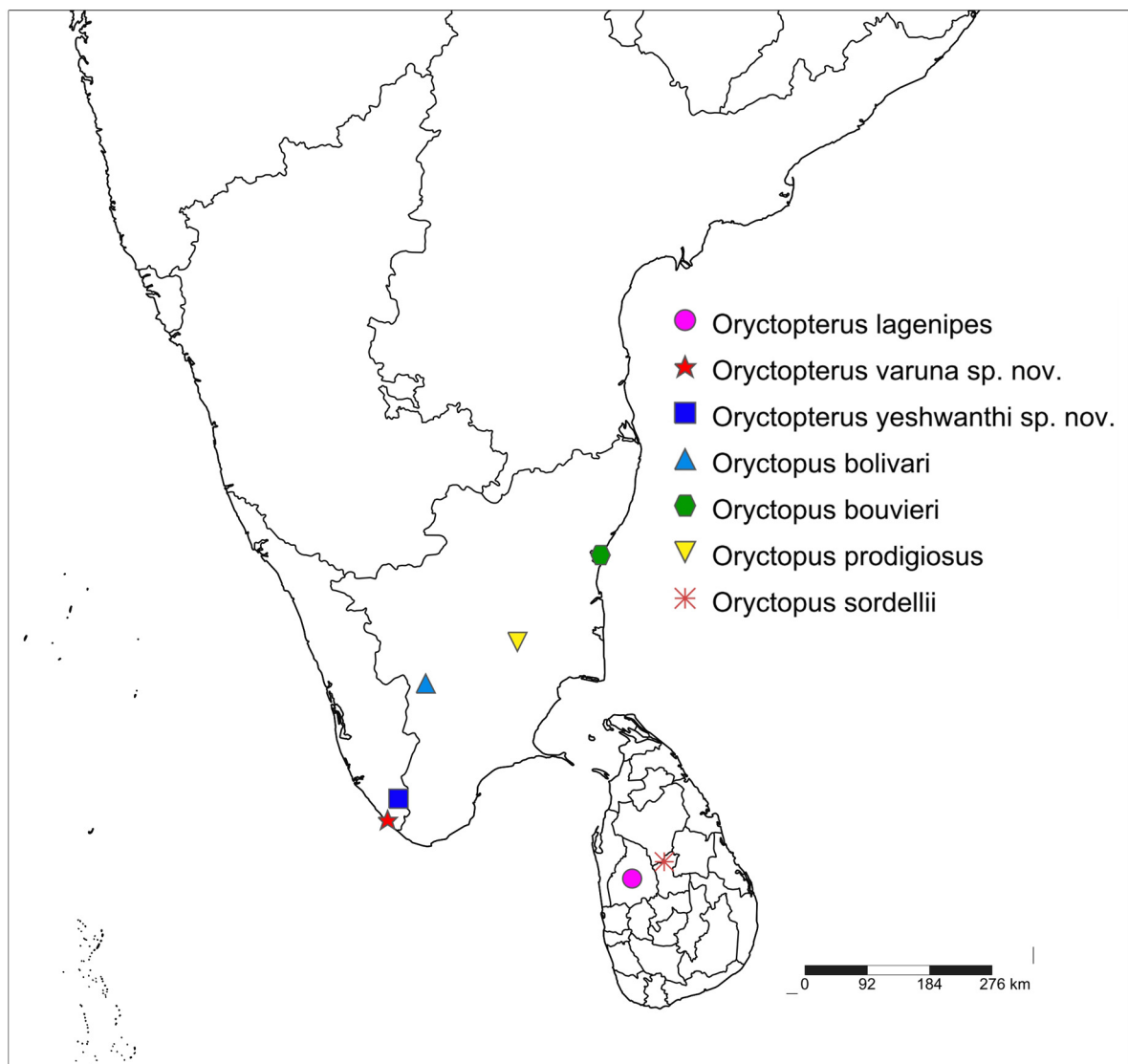
We believe that all females studied by us are adults, as two of them carried mature eggs and the rest of them were morphologically identical. However, the ovipositor valves were unsclerotized in all the specimens. Structure of the female genitalia, including the shape of spermatheca, which is sparingly used in the taxonomy of Stenopelmatidae, offers reliable characters in species delimitation. Discovery of *Ot. varuna* sp. nov. and *Ot. yeshwanthi* sp. nov. extends the distributional range of Oryctopinae in south India to Kerala. The other three south Indian species are restricted to Tamil Nadu and Pondicherry (Fig. 70).

This is the first description of the food habits and behavior of Oryctopinae. Examination of the gut contents in two of the field-collected specimens indicates a predatory mode of life. In captivity, they did not feed on oatmeal, potatoes or biscuits. Oatmeal trails in their habitat did not attract any individual. However, in captivity they fed on termites, ants, nymphs of grasshoppers, and larvae and pupae of the black soldier fly *Hermetia illucens* (Linnaeus, 1758) (Diptera: Stratiomyidae). They may ingest pieces of wood and sand, possibly to enhance grinding of the food in the gizzard, as ‘gastroliths’, in some birds (Wings & Sander 2007), or as mineral supplements.



## Acknowledgements

We are indebted to Dr David Weissman, California Academy of Sciences, San Francisco, for guidance and support throughout the study. He also critically reviewed previous versions of the manuscript. Y.Y. Ruan provided a copy of Griffini (1914). Dr R. Swaminathan, Maharana Prathap University of Agriculture & Technology, Udaipur critically reviewed the manuscript. C.M. Kalleswaraswamy, University of Agricultural & Horticultural Sciences, Shivamogga, identified *Odontotermes* sp. and Manoj Vembayam, Travancore Natural History Society, identified *Pheidole* sp. Critical review by an anonymous reviewer greatly improved the manuscript. We are greatly indebted to Mr Prasanth S., College of Agriculture, Vellayani, who ran a successful social media campaign to collect the elusive males of *Ot. varuna* sp. nov. We also thank Mr Kumar A. and Mr Pradeep D. of the Instructional Farm, College of Agriculture, Vellayani for relentlessly searching for the males and finally collecting them.



**Fig. 70.** Distribution of Oryctopinae Kevan, 1986 species.



## References

- Béthoux O. 2012. King crickets, raspy crickets and weta, their wings, their fossil relatives. *Journal of Orthoptera Research* 21 (2): 179–225. <https://doi.org/10.1665/034.021.0206>
- Cigliano M.M., Braun H., Eades D.C. & Otte D. 2019. Orthoptera Species File. Version 5.0/5.0. Available from <http://Orthoptera.SpeciesFile.org> [accessed 9 Sep. 2019].
- Gorochov A.V. 2001. The higher classification, phylogeny and evolution of the superfamily Stenopelmatoidea. In: Field L.H. (ed.) *The Biology of Wetas, King Crickets and their Allies*: 3–34. CABI Publishing, Wallingford.
- Griffini A. 1914. Studi sopra alcuni Stenopelmatidi dell'Indian Museum di Calcutta. *Atti della Società italiana di scienze naturali e del Museo civico di storia naturale di Milano* 53: 46–72.
- Gunatilaka A. 2000. Sea-levels as historical time-markers in prehistoric studies. *Journal of the Royal Asiatic Society of Sri Lanka* 45: 19–34.
- Johns P.M. 1997. The Gondwanaland weta: family Anostostomatidae (formerly in Stenopelmatidae, Henicidae or Mimnermidae): nomenclatural problems, world checklist, new genera and species. *Journal of Orthoptera Research* 6: 125–138. <https://doi.org/10.2307/3503546>
- Karny H.H. 1937. Orthoptera. Fam. Gryllacrididae, subfamiliae omnes. In: Wytzman P. (ed.) *Genera Insectorum* 206: 1–317. Available from <https://www.biodiversitylibrary.org/item/223806>
- O'Brien B. & Field L.H. 2001. Morphology and anatomy of New Zealand Wetas. In: Field L.H. (ed.) *The Biology of Wetas, King Crickets and their Allies*: 127–162. CABI Publishing, Wallingford.
- Ross A.J. 2012. Testing decreasing variability of cockroach forewings through time using four recent species: *Blattella germanica*, *Polyphaga aegyptiaca*, *Shelfordella lateralis* and *Blaberus craniifer*, with implications for the study of fossil cockroach forewings. *Insect Science* 19: 129–142. <https://doi.org/10.1111/j.1744-7917.2011.01465.x>
- Shishodia M.S., Chandra K. & Gupta S.K. 2010. An annotated checklist of Orthoptera (Insecta) from India. *Records of the Zoological Survey of India, Miscellaneous Publication, Occasional Paper* 314: 1–366. Available from <http://faunaofindia.nic.in/PDFVolumes/occpapers/314/index.pdf> [accessed 9 Sep. 2019].
- Vandergast A.G., Bohonak A.J., Weissman D.B. & Fisher R.N. 2007. Understanding the genetic effects of recent habitat fragmentation in the context of evolutionary history: phylogeography and landscape genetics of a southern California endemic Jerusalem cricket (Orthoptera: Stenopelmatidae: *Stenopelmatus*). *Molecular Ecology* 16: 977–992. <https://doi.org/10.1111/j.1365-294X.2006.03216.x>
- Vandergast A.G., Lewallen E.A., Deas J., Bohonak A.J., Weissman D.B. & Fisher, R.N. 2009. Loss of genetic connectivity and diversity in urban microreserves in a southern California endemic Jerusalem cricket (Orthoptera: Stenopelmatidae: *Stenopelmatus* n. sp. “santa monica”). *Journal of Insect Conservation* 13: 329–345. <https://doi.org/10.1007/s10841-008-9176-z>
- Weissman D.B. 2001a. North and Central American Jerusalem crickets (Orthoptera: Stenopelmatidae): taxonomy, distribution, life cycle, ecology and related biology of the American species. In: Field L.H. (ed.) *The Biology of Wetas, King Crickets and their Allies*: 57–72. CABI Publishing, Wallingford.
- Weissman D.B. 2001b. Communication and reproductive behaviour in North American Jerusalem crickets (*Stenopelmatus*) (Orthoptera: Stenopelmatidae). In: Field L.H. (ed.) *The Biology of Wetas, King Crickets and their Allies*: 351–373. CABI Publishing, Wallingford.

- Weissman D.B. & Bazelet C.S. 2013. Notes on southern Africa Jerusalem crickets (Orthoptera: Stenopelmatidae: *Sia*). *Zootaxa* 3616 (1): 49–60. <https://doi.org/10.11646/zootaxa.3616.1.4>
- Weissman D.B., Judge K.A., Williams S.C., Whitman D.W. & Lee V.F. 2008. Small-male mating advantage in a species of Jerusalem crickets (Orthoptera: Stenopelmatinae: *Stenopelmatus*). *Journal of Orthoptera Research* 17: 321–332. <https://doi.org/10.1665/1082-6467-17.2.321>
- Wings O. & Sander P.M. 2007. No gastric mill in sauropod dinosaurs: new evidence from analysis of gastrolith mass and function in ostriches. *Proceedings of the Royal Society B* 274: 635–640. <https://doi.org/10.1098/rspb.2006.3763>
- Yamasako J. 2015. A method to observe membranous structures of female genitalia in the inflated condition (Coleoptera: Cerambycidae). *The Coleopterists Bulletin* 69 (4): 799–805. <https://doi.org/10.1649/0010-065X-69.4.799>

*Manuscript received: 14 October 2019*

*Manuscript accepted: 6 August 2020*

*Published on: 7 May 2021*

*Topic editor: Nesrine Akkari*

*Desk editor: Pepe Fernández*

Printed versions of all papers are also deposited in the libraries of the institutes that are members of the *EJT* consortium: Muséum national d’histoire naturelle, Paris, France; Meise Botanic Garden, Belgium; Royal Museum for Central Africa, Tervuren, Belgium; Royal Belgian Institute of Natural Sciences, Brussels, Belgium; Natural History Museum of Denmark, Copenhagen, Denmark; Naturalis Biodiversity Center, Leiden, the Netherlands; Museo Nacional de Ciencias Naturales-CSIC, Madrid, Spain; Real Jardín Botánico de Madrid CSIC, Spain; Zoological Research Museum Alexander Koenig, Bonn, Germany; National Museum, Prague, Czech Republic.

## Supplementary files

**Supp. file 1:** Defence behaviour of *Oryctopterus varuna* sp. nov.  
<https://doi.org/10.5852/ejt.2021.748.1349.4177>

**Supp. file 2:** Digging behaviour of *Oryctopterus varuna* sp. nov.  
<https://doi.org/10.5852/ejt.2021.748.1349.4179>

**Supp. file 3:** Walking behaviour of *Oryctopterus varuna* sp. nov.  
<https://doi.org/10.5852/ejt.2021.748.1349.4181>

# ZOBODAT - [www.zobodat.at](http://www.zobodat.at)

Zoologisch-Botanische Datenbank/Zoological-Botanical Database

Digitale Literatur/Digital Literature

Zeitschrift/Journal: [European Journal of Taxonomy](#)

Jahr/Year: 2021

Band/Volume: [0748](#)

Autor(en)/Author(s): Hiremath S. R., Prathapan Kaniyarikkal D.

Artikel/Article: [Two new species of the genus \*Oryctopterus\* \(Orthoptera: Stenopelmatidae: Oryctopinae\) from India, with some notes on biology 108-137](#)