

## Research article

urn:lsid:zoobank.org:pub:253B791F-78FF-42AC-8047-E92449BA4E47

# Integrative description of new giant pill-millipedes from southern Thailand (Diplopoda, Sphaerotheriida, Zephroniidae)

Trine ROSENMEJER <sup>1</sup>, Henrik ENGHOFF <sup>2,\*</sup>, Leif MORITZ <sup>3</sup> & Thomas WESENER <sup>4</sup>

<sup>1,2</sup> Natural History Museum of Denmark, University of Copenhagen, Universitetsparken 15,  
 DK-2100 Copenhagen OE, Denmark.

<sup>3,4</sup> Zoological Research Museum Alexander Koenig, Leibniz Institute for Animal Biodiversity,  
 Adenauerallee 160, D-53113 Bonn, Germany.

<sup>3</sup> Institute of Evolutionary Biology and Ecology, University of Bonn, An der Immenburg 1,  
 53121 Bonn, Germany.

\* Corresponding author: [henghoff@snm.ku.dk](mailto:henghoff@snm.ku.dk)

<sup>1</sup> Email: [trinehansen@hotmail.com](mailto:trinehansen@hotmail.com)

<sup>3</sup> Email: [moritz.leif@gmail.com](mailto:moritz.leif@gmail.com)

<sup>4</sup> Email: [twesener@leibniz-zfmk.de](mailto:twesener@leibniz-zfmk.de)

<sup>1</sup> urn:lsid:zoobank.org:author:F9E1E73B-E6D8-46D7-B470-05E91142C98F

<sup>2</sup> urn:lsid:zoobank.org:author:9B9D901F-D6C8-4BCA-B11B-CF6EE85B16DC

<sup>3</sup> urn:lsid:zoobank.org:author:89921EE8-F015-4FED-AB5C-1D17F2C2F8F6

<sup>4</sup> urn:lsid:zoobank.org:author:86DEA7CD-988C-43EC-B9D6-C51000595B47

**Abstract.** Two new species of giant pill-millipedes, *Zephronia viridisoma* Rosenmejer & Wesener sp. nov. and *Sphaerobelum aesculus* Rosenmejer & Wesener sp. nov., are described based on museum samples from southern Thailand. *Zephronia viridisoma* sp. nov. comes from Khao Lak, while the type locality of *S. aesculus* sp. nov. is on Phuket Island. Both species are described integratively, combining light microscopy, scanning electron microscopy, multi-layer photography, micro-CT scans and genetic barcoding. Genetic barcoding was successfully conducted for holotypes of both new species, which could be added to a dataset of all published sequences of the family Zephroniidae, including all described species from Thailand, Laos and Cambodia up to 2020. Genetic barcoding of the COI gene revealed another female of *S. aesculus* sp. nov., 160 km east of the type locality. Both new species are genetically distant from all other Zephroniidae from Thailand and surrounding countries, showing uncorrected p-distances of 16.8–23.1%. A virtual cybertype of a paratype of *Z. viridisoma* sp. nov. was created and made publically accessible.

**Keywords.** Cybertype, CT Scan, DNA Barcoding, biodiversity, soil fauna.

Rosenmejer T., Enghoff H., Moritz L. & Wesener T. 2021. Integrative description of new giant pill-millipedes from southern Thailand (Diplopoda, Sphaerotheriida, Zephroniidae). *European Journal of Taxonomy* 762: 108–132. <https://doi.org/10.5852/ejt.2021.762.1457>

## Introduction

Thailand harbours an extremely rich and highly endemic biota. This unique biodiversity, which to a high extent is associated with limestone karsts, is under threat, mainly from anthropogenic habitat destruction. There is thus a race against time to describe and protect the microendemic Thai endangered fauna (Clements *et al.* 2006). Millipedes (Diplopoda) constitute a conspicuous element in Thailand's biodiversity, including some of the largest terrestrial invertebrates, as well as many strikingly coloured species; see, e.g., Enghoff *et al.* (2007), Srisonchai *et al.* (2016) and Pimvichai *et al.* (2018). The millipede fauna of Thailand has received considerable attention in recent years. From the time when the first species were recorded from "Siam" by Karsch (1881) and until the first comprehensive list of Thai millipedes was published by Enghoff (2005), 105 species had been recorded, but due to a massive effort by Professor Somsak Panha and his (now former) students from Chulalongkorn University in Bangkok, in collaboration with foreign specialists, the following 14 years saw a dramatic increase to 228 species (Likhitrakarn *et al.* 2019), and the number is still growing: with the contributions by Pimvichai *et al.* (2020), Wesener *et al.* (2021) and Likhitrakarn *et al.* (2021), and including the two species described here, 243 millipede species are now known from Thailand. The increased knowledge of Thai millipedes has mainly concerned the orders Polydesmida Leach, 1815, Spirobolida Bollman, 1893 and Spirostreptida Brandt, 1833. In contrast, the giant pill-millipedes, order Sphaerotheriida Brandt, 1833, have largely been neglected although they are common and apparently very diverse in Thailand. Until now, only five species of Sphaerotheriida have been recorded from Thailand, viz., *Zephronia siamensis* Hirst, 1907 (Hirst 1907), *Z. cf. viridescens* Attems, 1936 (recorded by Wongthamwanich *et al.* 2013), *Sphaerobelum truncatum* Wongthamwanich, 2012 (Wongthamwanich *et al.* 2012), and – very recently – *Zephronia lannaensis* Likhitrakarn & Golovatch, 2021, and *Z. phrain* Likhitrakarn & Golovatch, 2021 (Likhitrakarn *et al.* 2021).

The present paper is a first step of an effort to bring the knowledge of the Thai giant pill-millipede fauna up to a similar level as those of neighbouring Vietnam (e.g., Semenyuk *et al.* 2020) and Laos (Wesener 2019). We describe two new giant pill-millipede species from Thailand integratively, combining morphology with genetic barcodes, and creating a freely accessible cybertype for one of the new species.

## Material and methods

### Specimens

Details of the studied specimens, which were all hand-collected, are summarized in Table 1.

### Abbreviations

ATOL = Assembling the Tree Of Life project  
CT = computer tomography  
MHNG = Muséum d'Histoire naturelle de la Ville de Genève, Geneva, Switzerland  
NHMD = Natural History Museum of Denmark, University of Copenhagen, Denmark  
SEM = scanning electron microscopy  
ZFMK = Zoological Research Museum A. Koenig, Leibniz Institute for Animal Biodiversity, Bonn, Germany

### Map

The localities of the described species were mapped in QGIS ver. 3.8.0 Zanzibar (QGIS Development Team 2018).

**Table 1.** Morphologically analysed specimens.

<i>Sphaerobelum aesculus</i> Rosenmejer & Wesener sp. nov.	holotype, ♂	THAILAND, Phuket Island, Forest in Kathu district; 14 Feb. 1989. M. Andersen & A. R. Rasmussen leg.; in & under old logs.	NHMD 621693
<i>Sphaerobelum aesculus</i> Rosenmejer & Wesener sp. nov.	non-type, ♀	THAILAND, Nakhon Si Thammarat Prov., Khao Luang NP; 8°43'25.2" N, 99°40'7.7" E, 355 m a.s.l.; 10–12 Oct 2003; ATOL Expedition 2003 leg.	NHMD 621694
<i>Zephronia viridisoma</i> Rosenmejer & Wesener sp. nov.	holotype, ♂	THAILAND, Nakhon Si Thammarat Province, Sichon District, Khao Lark Waterfall; 9°03'6" N, 99°47'24" E; 25 Aug. 2007; Chulalongkorn. Univ. Exp. leg.; dense jungle on limestone.	NHMD 621695
<i>Zephronia viridisoma</i> Rosenmejer & Wesener sp. nov.	paratypes, 2 ♂♂, 4 ♀♀	Same data as holotype.	NHMD 621696
<i>Zephronia viridisoma</i> Rosenmejer & Wesener sp. nov.	paratype, ♂	Same data as holotype.	ZFMK MYR8786
<i>Zephronia viridisoma</i> Rosenmejer & Wesener sp. nov.	paratype, ♀	Same data as holotype. CT scan voucher.	ZFMK MYR8787

### Dissecting, light microscopy, illustrations

Dissecting and pencil drawings were done under a Zeiss Discovery V8 with a camera lucida. Illustrations were produced by hand on paper, with a camera lucida mounted on a Zeiss Discovery V8. Drawings were afterwards scanned, and digitally touched up. All illustrations and pictures were edited in Adobe Photoshop CC. The backgrounds have been smoothed out, to reduce any disruptive visuals and to make them more similar in overall appearance. All terminology follows the recent literature (Wesener 2016a).

### Scanning electron microscopy

For scanning electron microscopy (SEM), the endotergum and head were dissected. The samples were cleaned and dehydrated via an ethanol series (2× 96%, 3× 100%) before being mounted on aluminum stubs and dried overnight. The stub was sputter-coated with gold in a Cressington 108 auto sputter coater. Images were obtained using a Zeiss Sigma 300 VP SEM at the ZFMK. After the study, dry coated SEM material was removed from stubs and returned to alcohol.

### Micro-computed tomography

Volumetric data from a female paratype of *Zephronia viridisoma* Rosenmejer & Wesener sp. nov. (ZFMK MYR8787) in 75% ethanol was obtained using micro-computed tomography (micro-CT). Micro-CT data was obtained with a SkyScan 1272 (Bruker microCT, Kontich, Belgium) at the ZFMK using the following scanning parameters: source voltage = 60 kV, source current = 160 µA, filter = AL 0.5 mm, pixel size = 6.515728 µm, exposure = 2508 ms, rotation = 180°, rotation step = 0.1°, averaging = 7, random movement = 15, flat field correction = ON, geometrical correction = on. Digital sections were reconstructed with NRecon ver. 1.7 (Bruker microCT, Kontich, Belgium) and modified in Fiji Image J 1.52g (Schindelin *et al.* 2012). Volume rendering was performed in Drishti ver. 2.6.3 (Limaye 2012). The image sequence of the reconstructed micro-CT-scan, i.e., the cybertype, is deposited in Zenodo and can be accessed by <https://doi.org/10.5281/zenodo.4548243>. The Voucher is stored at ZFMK (ZFMK MYR8787).

### DNA barcoding

In order to help with identifying related species, identifying females, and investigate the intraspecific and interspecific genetic (COI) distances, a molecular genetic barcoding study (Hebert *et al.* 2003) was conducted. DNA extraction, amplification, and sequencing of the cytochrome c oxidase subunit 1 (COI) gene was done as in previous studies (Sagorny & Wesener 2017; Wesener 2019), using the degenerate primer pair HCO-JJ/LCO-JJ (HCOJJ AWACTTCVGGRTGVCCAAARAATCA / LCOJJ CHACWAAYCATAAAGATATYGG) (Astrin & Stüben 2008). BLAST searches (Altschul *et al.* 1997) were performed as nucleotide blast on 19 July 2019 to confirm sequence identities and to check for contaminations. Sequences were concatenated by hand or utilizing the software Seqman (DNASTAR Inc.). The whole dataset was translated into amino acids to rule-out the accidental amplification of pseudogenes. The six new sequences have been uploaded to GenBank under the accession codes MW898737–MW898742 (Table 2).

### Phylogenetic and distance analyses

The six new COI sequences were added to a dataset from a previous study, containing all published sequences of the Zephroniidae Gray, 1843 (as per June 2020) in addition to far and near outgroups (Wesener 2019). All sequences were aligned in Bioedit (Hall 1999). The final dataset contained 34 terminals (Table 1) and 671 base pairs as four base pairs were excluded because of too much missing data.

The number of base differences per site between sequences (p-distances) was calculated (see Supp. file 1). Codon positions included were 1<sup>st</sup>+2<sup>nd</sup>+3<sup>rd</sup>. All ambiguous positions were removed for each sequence pair. Evolutionary analyses were conducted in MEGA6 (Tamura *et al.* 2013). The evolutionary history was inferred by using the Maximum Likelihood method based on the General Time Reversible model (Nei & Kumar 2000). The tree with the highest log likelihood (-9133.8776) is shown (Fig. 1). The percentage of trees (based on 1000 replicates) in which the associated taxa clustered together is shown next to the branches. Initial tree(s) for the heuristic search were obtained automatically by applying Neighbor-Join and BioNJ algorithms to a matrix of pairwise distances estimated using the Maximum Composite Likelihood (MCL) approach. The topology with a superior log likelihood value was selected. A discrete Gamma distribution was used to model evolutionary rate differences among sites (5 categories (+G, parameter = 0.566)). The rate variation model allowed for some sites to be evolutionarily invariable ([+I], 36.56% sites). The tree is drawn to scale, with branch lengths measured in the number of substitutions per site. The analysis included 34 nucleotide sequences. Codon positions included were 1<sup>st</sup>+2<sup>nd</sup>+3<sup>rd</sup>. All positions with less than 85% site coverage were eliminated. That is, fewer than 15% alignment gaps, missing data, and ambiguous bases were allowed at any position.

## Results

### Tree description and genetic distances between species

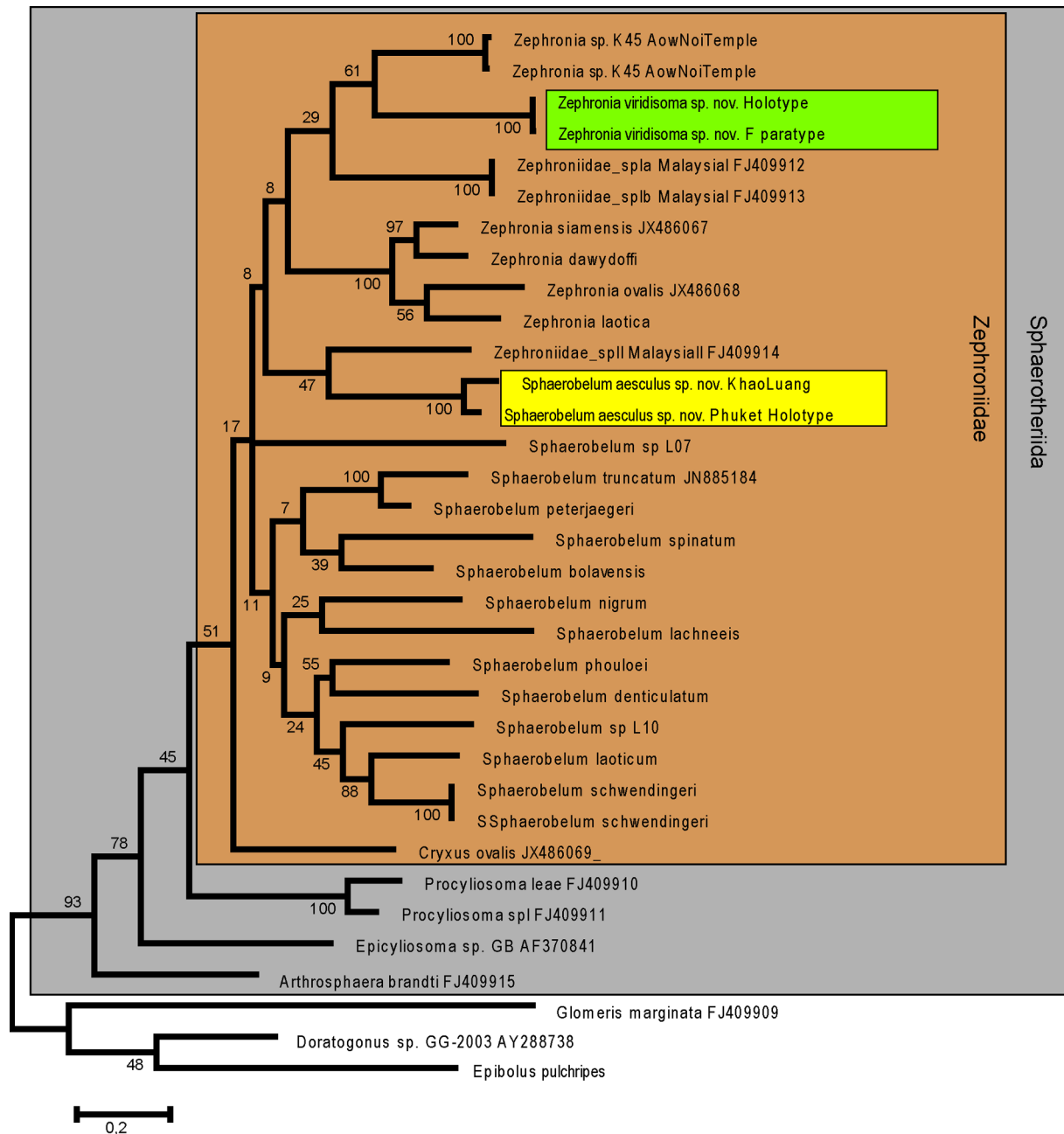
The gene tree might not be suitable for reconstructing deeper phylogenetic splits, but the order Sphaerotheriida and the family Zephroniidae were recovered as monophyletic taxa. Genetic distances were high, interspecific distances in our dataset of Zephroniidae varied between 13.6–24.4% (Supp. file 1). The maximum likelihood tree based on the COI barcoding fragment showed low support (51%) for the family Zephroniidae, with *Cryxus* in a basal position to a trichotomy (Fig. 1). Bootstrap support was generally low, with only a few species-groups, like the *Zephronia* ‘sensu stricto’ group encompassing *Z. ovalis*, *Z. laotica*, *Z. dawydoffi* and *Z. siamensis*, receiving high support values (Fig. 1). Most *Sphaerobelum* species grouped together, albeit with low support. *Sphaerobelum aesculus* Rosenmejer & Wesener sp. nov. was retrieved in an isolated position and differed from the closest related species (Fig. 1), a Zephroniidae species (Zephroniidae\_spII) of an unknown genus obtained from pet trade of Malaysia,



**Table 2.** Genetically analysed specimens, voucher and GenBank number. Specimens marked by an \* have been newly sequenced. Abbreviations: MHNG = Muséum d'Histoire naturelle de la Ville de Genève, Geneva, Switzerland; NHMD = Natural History Museum of Denmark, University of Copenhagen; QVMAG = Queen Victoria Museum and Art Gallery, Tasmania, Australia; SMF = Senckenberg Museum Frankfurt, Germany; ZFMK = Zoological Research Museum Koenig, Bonn, Germany.

Species	Voucher #	GenBank #
Spirostreptida, <i>Doratogonus</i> sp. GG-2003	unknown	AY288738
Spirobolida, <i>Epibolus pulchripes</i>	ZFMK MyrXX	MK330970
Glomerida, <i>Glomeris marginata</i>	ZFMK Myr009	FJ409909
Sphaerotheriida, unknown family, <i>Epicyliosoma</i> sp. GB	unknown	AF370841
Sphaerotheriida, Procyliosomatidae, <i>Procyliosoma leae</i>	QVMAG 23:45801	FJ409910
Sphaerotheriida, Procyliosomatidae, <i>Procyliosoma</i> sp.	QVMAG 23:25721	FJ409911
Sphaerotheriida, Arthrosphaeridae, <i>Arthrosphaera brandti</i>	FMNH-INS 8650	FJ409915
Sphaerotheriida, Zephroniidae sp. Ia	ZFMK Myr014	FJ409912
Sphaerotheriida, Zephroniidae sp. Ib	ZFMK Myr015	FJ409913
Sphaerotheriida, Zephroniidae sp. II (unknown genus)	lost	FJ409914
Sphaerotheriida, Zephroniidae, <i>Sphaerobelum truncatum</i>	FMNH-INS 72673	JN885184
Sphaerotheriida, Zephroniidae, <i>Zephronia siamensis</i>	FMNH-INS-72669	JX486067
Sphaerotheriida, Zephroniidae, <i>Zephronia ovalis</i>	ZFMK Myr0832	JX486068
Sphaerotheriida, Zephroniidae, <i>Cryxus ovalis</i>	ZFMK Myr0824	JX486069
Sphaerotheriida, Zephroniidae, <i>Zephronia dawydoffi</i>	ZFMK Myr4504	MK330971
Sphaerotheriida, Zephroniidae, <i>Zephronia laotica</i>	ZFMK Myr3502	MK330977
Sphaerotheriida, Zephroniidae, <i>Sphaerobelum bolavensis</i>	MHNG LT-10/24	MK330982
Sphaerotheriida, Zephroniidae, <i>Sphaerobelum phouloei</i>	NHMD00040257	MK330974
Sphaerotheriida, Zephroniidae, <i>Sphaerobelum denticulatum</i>	MHNG LT-10/12	MK330983
Sphaerotheriida, Zephroniidae, <i>Sphaerobelum spinatum</i>	ZMUC00040258	MK330973
Sphaerotheriida, Zephroniidae, <i>Sphaerobelum lachneei</i>	MHNG LT-10/12	MK330982
Sphaerotheriida, Zephroniidae, <i>Sphaerobelum peterjaegeri</i>	SMF SD553	MK330972
Sphaerotheriida, Zephroniidae, <i>Sphaerobelum nigrum</i>	SMF	MK330976
Sphaerotheriida, Zephroniidae, <i>Sphaerobelum laoticum</i>	SMF	MK330975
Sphaerotheriida, Zephroniidae, <i>Sphaerobelum schwendingeri</i>	MHNG LT 10/03	MK330978
Sphaerotheriida, Zephroniidae, <i>Sphaerobelum schwendingeri</i>	SMF	MK330981
Sphaerotheriida, Zephroniidae, <i>Sphaerobelum</i> sp. L07	NHMD00040261	MK330979
Sphaerotheriida, Zephroniidae, <i>Sphaerobelum</i> sp. L10	SMF	MK330980
Sphaerotheriida, Zephroniidae, <i>Sphaerobelum aesculus</i> Rosenmejer & Wesener sp. nov., holotype, ♂*	NHMD 621693	MW898737
Sphaerotheriida, Zephroniidae, <i>Sphaerobelum aesculus</i> Rosenmejer & Wesener sp. nov., ♀*	NHMD 621694	MW898738
Sphaerotheriida, Zephroniidae, <i>Zephronia</i> sp., AowNoiTemple*	NHMD K45	MW898741
Sphaerotheriida, Zephroniidae, <i>Zephronia</i> sp., AowNoiTemple*	ZFMK MYR8822	MW898742
Sphaerotheriida, Zephroniidae, <i>Zephronia viridisoma</i> Rosenmejer & Wesener sp. nov., holotype, ♂*	NHMD 621695	MW898739
Sphaerotheriida, Zephroniidae, <i>Zephronia viridisoma</i> Rosenmejer & Wesener sp. nov., paratype, ♀*	ZFMK MYR8787	MW898740

by 17.9% (Supp. file 1). The two specimens of *S. aesculus* sp. nov., found 160 km apart (Fig. 2), differed by 6.1%. Holotype and paratype of *Zephronia viridisoma* sp. nov. showed no intraspecific distance and differed by 16.7% from the genetically closest taxon, an undescribed *Zephronia* from Aow Noi Temple (Mueang district, Prachuap Khiri Khan Province).



**Fig. 1.** The evolutionary history of the analyzed Sphaerotheriida Brandt, 1833 inferred by using the Maximum Likelihood method analyzed with the General Time Reversible model based on the COI gene. The tree is drawn to scale, with branch lengths measured in the number of substitutions per site. Codon positions included were 1<sup>st</sup>+2<sup>nd</sup>+3<sup>rd</sup>. All positions with less than 5% site coverage were eliminated. Yellow and green boxes mark the newly described species. Numbers below branches mark bootstrap values (1000 replicates). For specimen information see Table 2.

## Taxonomy

Class Diplopoda de Blainville in Gervais, 1844

Order Sphaerotheriida Brandt, 1833

Family **Zephroniidae** Gray, 1843

## Remarks

See Wesener (2016a) for a catalogue of the family.

Genus *Sphaerobelum* Verhoeff, 1924

## Type species

*Sphaerobelum clavigerum* Verhoeff, 1924, from Vietnam.

## Other taxa included

18 species including the one described below (Semenyuk *et al.* 2018, 2020; Wesener 2019; Zhao *et al.* 2020).

## Distribution

Vietnam, Thailand, Laos, China.

*Sphaerobelum aesculus* Rosenmejer & Wesener sp. nov.

urn:lsid:zoobank.org:act:84D3714E-5CF8-4063-8A4D-40BF8CBEBFB0

Figs 2A, 3–5, 6A

## Diagnosis

Differs from all other species of the genus *Sphaerobelum* in the shape of the posterior telopod, where there is a swelling at the tip of the immovable finger, but the swelling does not extend above the margin (Fig. 5B arrow). Such a swelling is currently unknown from any other giant pill-millipede species.

## Derivatio nominis

Named after the horse chestnut tree *Aesculus hippocastanum* L., for the resemblance of the rolled-up female to a horse chestnut. Noun in apposition.

## Material examined

### Holotype

THAILAND • ♂; Phuket Island, Forest in Kathu district; 14 Feb. 1989. M. Andersen and A.R. Rasmussen leg.; in and under old logs; NHMD 621693.

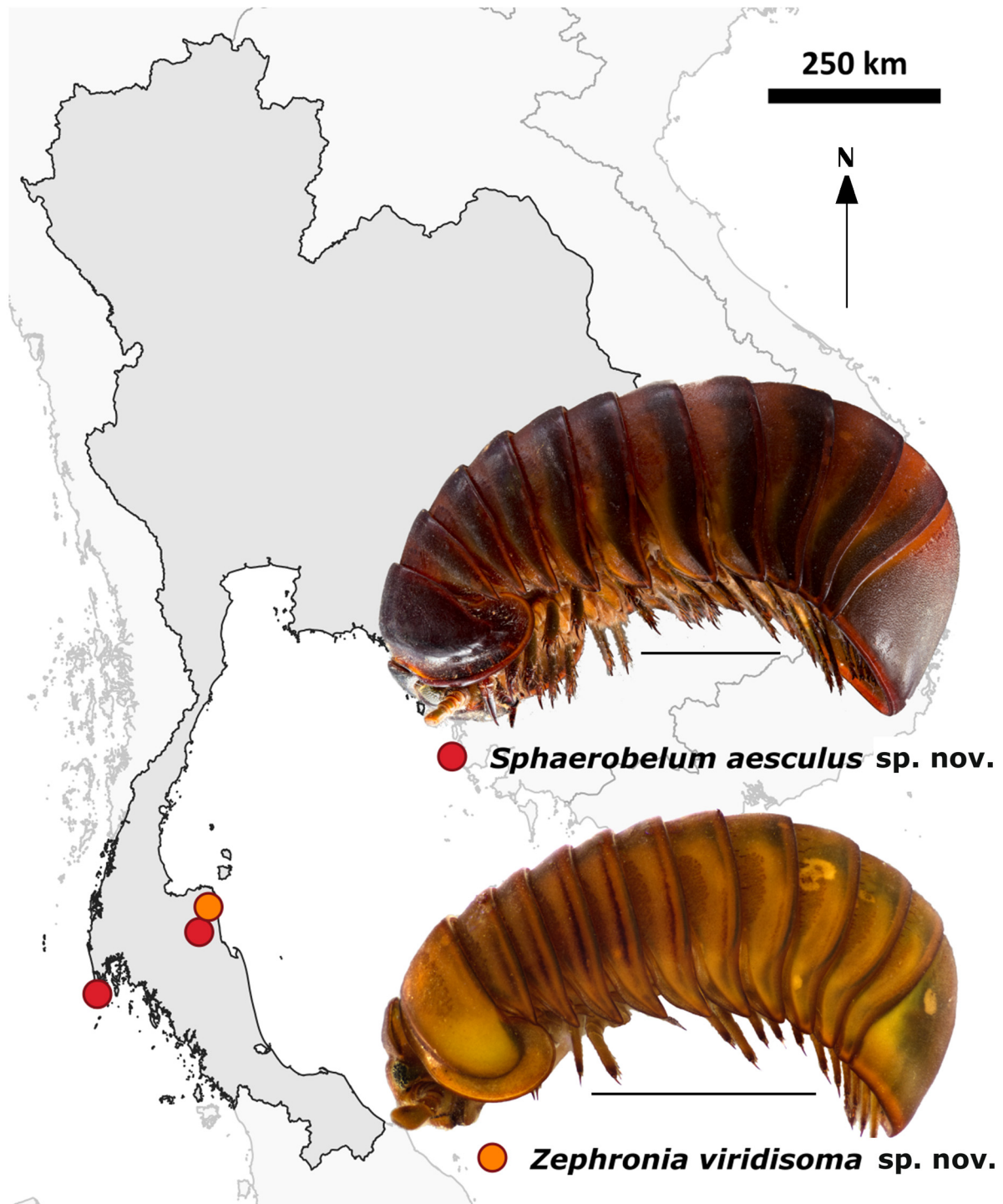
### Other material

THAILAND • 1 ♀; Nakhon Si Thammarat Prov., Khao Luang NP; 8°43'25.2" N, 99°40'7.7" E, 355 m a.s.l.; 10–12 Oct. 2003; ATOL Expedition 2003 leg.; NHMD 621694.

## Description (based on holotype)

SIZE. Length 23.8 mm. Width of thoracic shield 10.5 mm, of widest segment (9) 11.1 mm. Height of thoracic shield 6.2 mm, Height of highest segment (7) 7 mm.

COLOUR. Head, antenna, legs and tergites golden light brown. Posterior margin of tergites and paratergite tips medium brown. Anal shield medially brown, with lighter colour at edges (Fig. 2A).



**Fig. 2.** Map of Thailand, collection localities of *Sphaerobelum aesculus* Rosenmejer & Wesener sp. nov. and *Zephronia viridisoma* Rosenmejer & Wesener sp. nov., and habitus photographs: *S. aesculus* Rosenmejer & Wesener sp. nov., ♀ (NHMD 621694); *Z. viridisoma* Rosenmejer & Wesener sp. nov., paratype, ♀ (ZFMK MYR8787). Scale bars = 1 cm.

**HEAD.** Number of ommatidia 55. Antennae (Fig. 3A–C): Antennomere lengths:  $6 > 1 > 2 = 3 = 4 = 5$ . Antennae short, barely reaching first leg pair. Sixth antennomere apically slightly swollen (Fig. 3A), number of apical cones 52/56 (Fig. 3B). Mandible: not dissected. Gnathochilarium: lingual lamella with numerous long setae, medially glabrous.

**COLLUM.** With few setae spread thinly along borders.

**THORACIC SHIELD.** Thoracic shield grooves wide and deep, with 3 sclerotized ledges along inner ridge.

**TERGITES.** Paratergite tips on posterior half projecting backwards. Tergites glabrous with dull leather-like surface (Fig. 3D–E). At high magnification tiny setae become visible.

**ENDOTERGUM** (Fig. 6A). With a regular flat margin. Outer zone with two rows of irregular

**MARGINAL SETAE.** Not extending beyond posterior margin, but reaching  $\frac{2}{3}$  of the outer area. Anterior part of marginal ridge flat. Intersegmental membrane smooth, without cones and with a row of setae with large glabrous gaps.

**FIRST STIGMATIC PLATE** (Fig. 4A). With a well-rounded apex.

**PLEURITES.** Pleurite 1 projecting posteriorly with sharp apex. Pleurite 2 with rounded apex projecting slightly.

**LEGS.** Ventral spines on leg 1  $\frac{4}{4}$ , on leg 2  $\frac{3}{5}$ , on leg 3  $\frac{3}{4}$ . Apical spine absent on leg 3. Three apical and 4 or 5 ventral spines on midbody legs (Fig. 4C). Inner margin of femur with 8–12 small teeth, but not excavated. Femur 2, tarsus 4 times as long as wide.

**ANAL SHIELD.** Well-rounded and glabrous. Ventral side with a single small locking carina, placed  $\frac{1}{3}$  from pleurite.

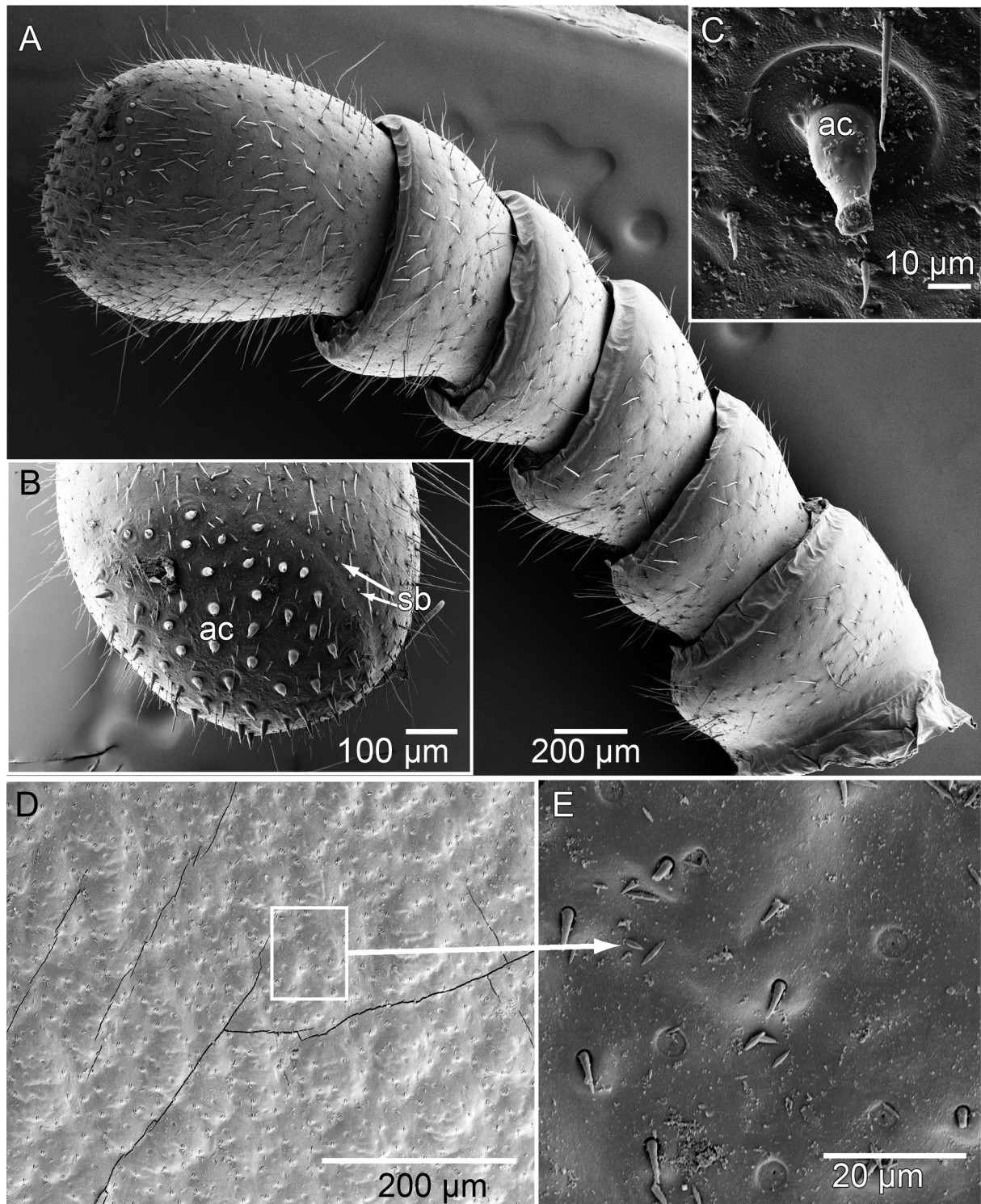
**MALE GONOPORE.** Located at mesal margin of coxa (Fig. 4B), large, covered by a membranous plate.

**ANTERIOR TELOPODS** (Fig. 4D–F). Podomere 1 rectangular, as long as wide, covered with setae anteriorly, with extra long setae medially, and posteriorly glabrous. Podomere 2 with long immovable finger visible laterally in anterior view. Finger curving inwards against podomere 3. Podomere 3 cylindrical twice as long as wide. Suture between podomere 3 and 4 barely visible in posterior and lateral views. Podomere 4 very short, just  $\frac{1}{4}$  of length of podomere 3, with one short and dark spine on apex.

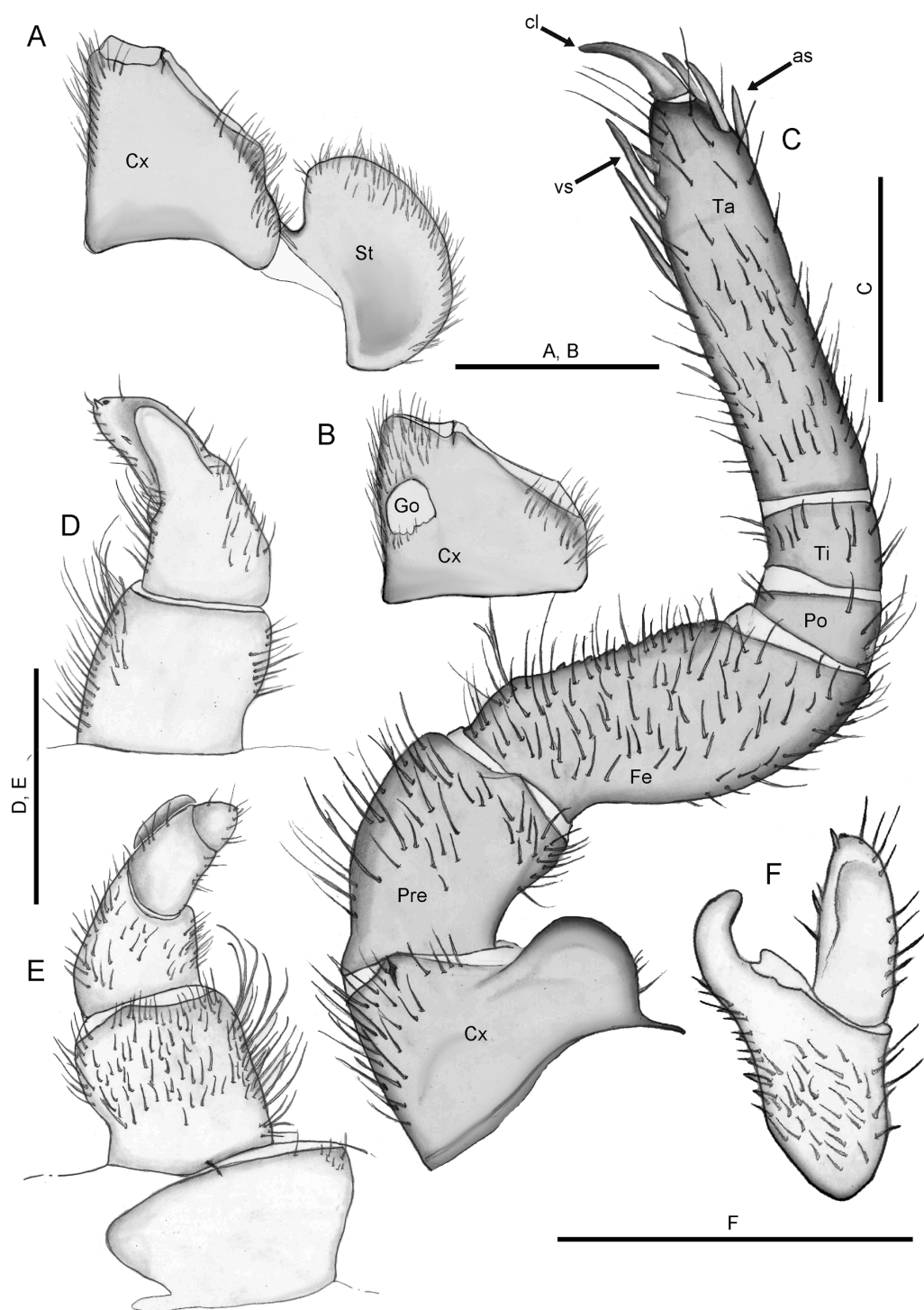
**POSTERIOR TELOPODS** (Fig. 5A–B). Podomere 1 as long as wide, covered in setae anteriorly, and nearly glabrous posteriorly. Podomere 2 with wide immovable finger. Immovable finger straight, only slightly tapering towards apex, bearing an oval membranous spot on posterior side. The membrane between podomere 2 and 3 with single membranous lobe, angled. Podomere 3 with sparse setation. Podomere 3 ca 3 times longer than wide, towards immovable finger with membranous ledge, a single spine, posterior side with row of 9 or 10 crenulated teeth. Podomere 4 short, straight, ca 2.5 times as long as wide, with a short membranous ledge and 2 spines towards immovable finger.

#### **Female from Khao Luang NP**

Length 45 mm. Width of thoracic shield 23 mm, of widest segment (9) 24.6 mm. Height of thoracic shield 12.6 mm, of highest segment (8) 15.2 mm. Antennae reaching leg pair 2. Apical cones on antennae 43/34. Subanal plate well rounded. Vulvae (Fig. 5C): small, with a narrow operculum (Op), only reaching bottom part of prefemur. External lateral plate (EP) and inner mesal plate (IP) almost completely fused.

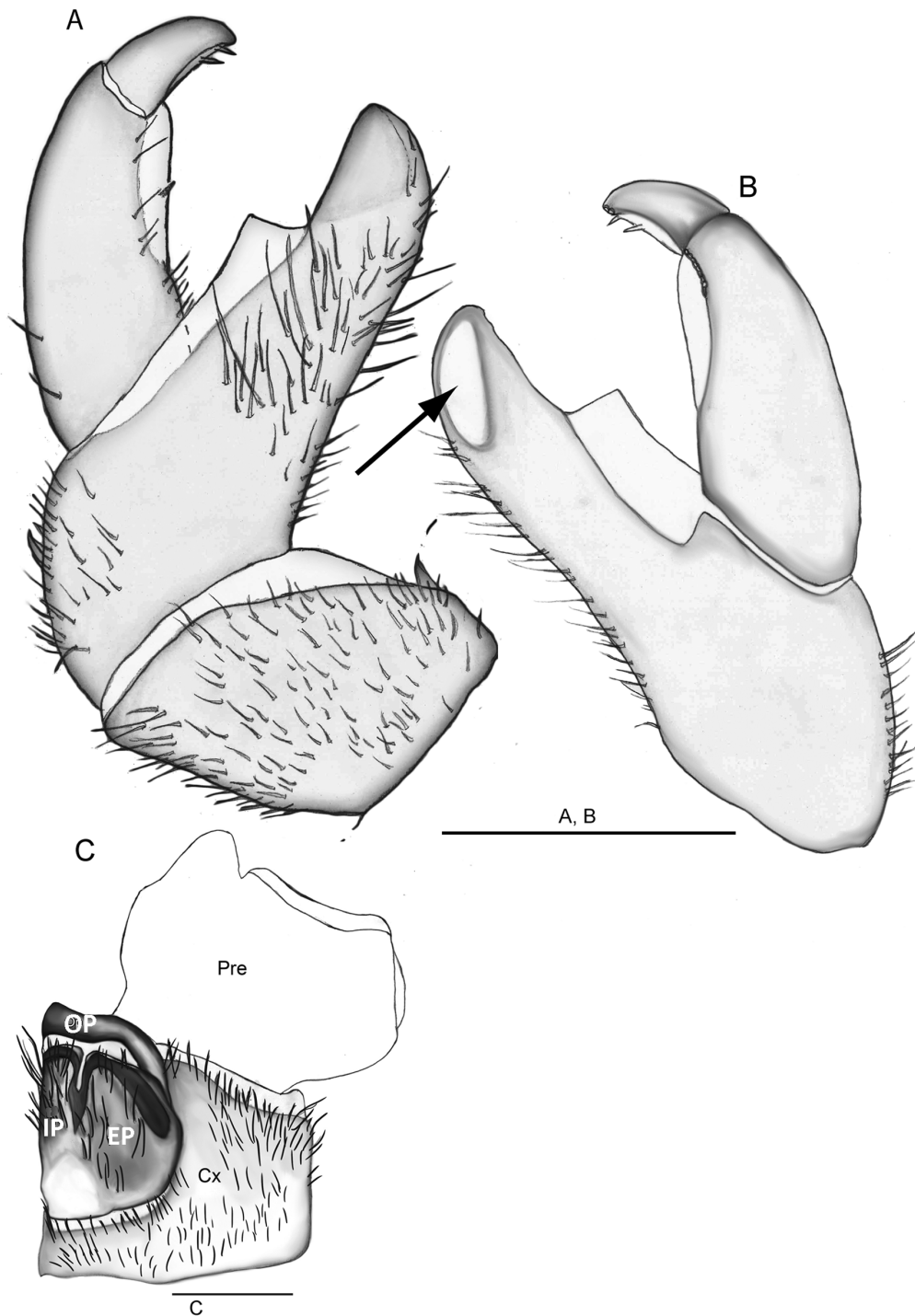


**Fig. 3.** *Sphaerobelum aesculus* Rosenmejer & Wesener sp. nov., holotype, ♂ (NHMD 621693), scanning electron micrographs. **A.** Right antenna, lateral view. **B.** Right antenna, disc. **C.** Detail of apical cone. **D.** Tergite surface of midbody ring. **E.** Tergite surface at very high magnification. Abbreviations: ac = apical cone; sb = sensilla basiconica.



**Fig. 4.** *Sphaerobelum aesculus* Rosenmejer & Wesener sp. nov., holotype, ♂ (NHMD 621693), drawings. **A.** First left coxa with stigmatic plate, posterior view. **B.** Second left coxa with gonopore, posterior view. **C.** Left leg 9, posterior view. **D.** Left anterior telopod, posterior view. **E.** Left anterior telopod, anterior view. **F.** Left anterior telopod, lateral view on podomeres 2–4. Abbreviations: as = apical spine; cl = claw; Cx = coxa; Fe = femur; Go = gonopore; Po = postfemur; Pre = prefemur; St = stigmatic plate; Ta = tarsus; Ti = tibia; vs = ventral spines. Scale bars = 1 mm.





**Fig. 5.** *Sphaerobelum aesculus* Rosenmejer & Wesener sp. nov. drawings. **A–B.** Holotype, ♂ (NHMD 621693), **C.** ♀ (NHMD 621694). **A.** Left posterior telopod, anterior view. **B.** Left posterior telopod, posterior view, arrow points to swelling of immovable finger. **C.** Left second coxa and prefemur with female vulva. Abbreviations: Cx = coxa; EP = external, lateral plate; IP = inner, mesal plate; Op = operculum; Pre = prefemur. Scale bars = 1 mm.



### Distribution

If the female from Khao Luang (Fig. 2A) is indeed conspecific with the male holotype, the species appears to have a wide area of distribution stretching from Phuket Island at least 160 km to the east (Fig. 2). Unpublished data from a larger inventory project (see, e.g., Wesener *et al.* 2021) of giant pill-millipedes in the surroundings of Krabi, half way between Phuket Island and Khao Luang, did not recover this species among the numerous specimens, hinting at a patchy distribution and specific microhabitat requirements of *S. aesculus* sp. nov.

Genus *Zephronia* Gray, 1832

### Type species

*Zephronia ovalis* Gray, 1832.

### Other taxa included

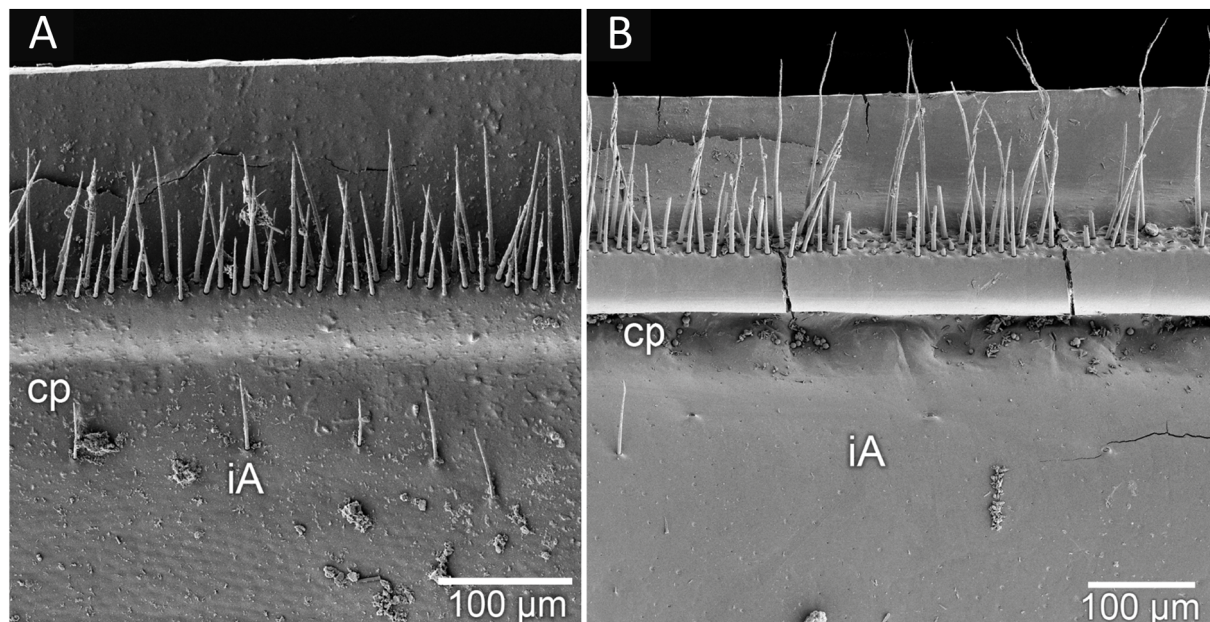
44 species, including the one described below (Wesener 2016a, 2019; Semenyuk *et al.* 2018, 2020).

### Distribution

NE India, Nepal, Myanmar, with a few species also in SE Asia.

### Remark

Likhitrakarn *et al.* (2021) provided an updated diagnosis of this genus including the presence of several apical tarsal spines. The new species described here necessitates a slight modification, as it has only one apical tarsal spine.



**Fig. 6.** Endoterga of midbody tergites, scanning electron micrographs. **A.** *Sphaerobelum aesculus* Rosenmejer & Wesener sp. nov., holotype (NHMD 621693). **B.** *Zephronia viridisoma* Rosenmejer & Wesener sp. nov., holotype, ♂ (NHMD 621695). Abbreviations: cp = cuticular patterns; iA = inner area.

*Zephronia viridisoma* Rosenmejer & Wesener sp. nov.  
urn:lsid:zoobank.org:act:272E06C8-2DE5-4722-A7D5-D85002D68424  
Figs 2B, 6B–12

### Diagnosis

Posterior telopod typical for the genus, not differing from those of other *Zephronia* species. Small (25–28 mm long) green species (Fig. 2B), surface appearing glabrous, dull, with a single medium sized locking carina at the anal shield and a strongly projecting pleurite 1 (Fig. 9A). One of the few *Zephronia* species with just a single apical spine on the legs (Fig. 9B), differing in this character from all other described Thai *Zephronia* species which have 2–5 apical tarsal spines. Male antennomere 6 swollen (Fig. 7A) but not axe-shaped, with <50 apical cones. Endotergum with three dense rows of long marginal setae (Fig. 6B). Palpi of gnathochilarium with sensory cones arranged in clusters (Fig. 8C–D). Anterior telopod podomere 3 with an elevated process at posterior side carrying sclerotized teeth. Podomere 4 short and narrow.

### Derivatio nominis

Named after the overall green colour of living individuals of the species, noun in apposition.

### Material examined

#### Holotype

THAILAND • ♂; Nakhon Si Thammarat Province, Sichon District, Khao Lark Waterfall; 9°03'6" N, 99°47'24" E; 25 Aug. 2007; Chulalongkorn University expedition of millipede workshop leg.; dense jungle on limestone; NHMD 621695.

#### Paratypes

THAILAND • 2 ♂♂, 4 ♀♀; same collection data as for holotype; NHMD 621696 • 1 ♂; same collection data as for holotype; ZFMK MYR8786 • 1 ♀; same collection data as for holotype; CT scan voucher; ZFMK MYR8787.

### Description (based on holotype)

SIZE. Length 25.6 mm. Width of thoracic shield 12.1 mm, of widest segment (8) 13 mm. Height of thoracic shield 7.1 mm, of highest segment (8) 7.7 mm.

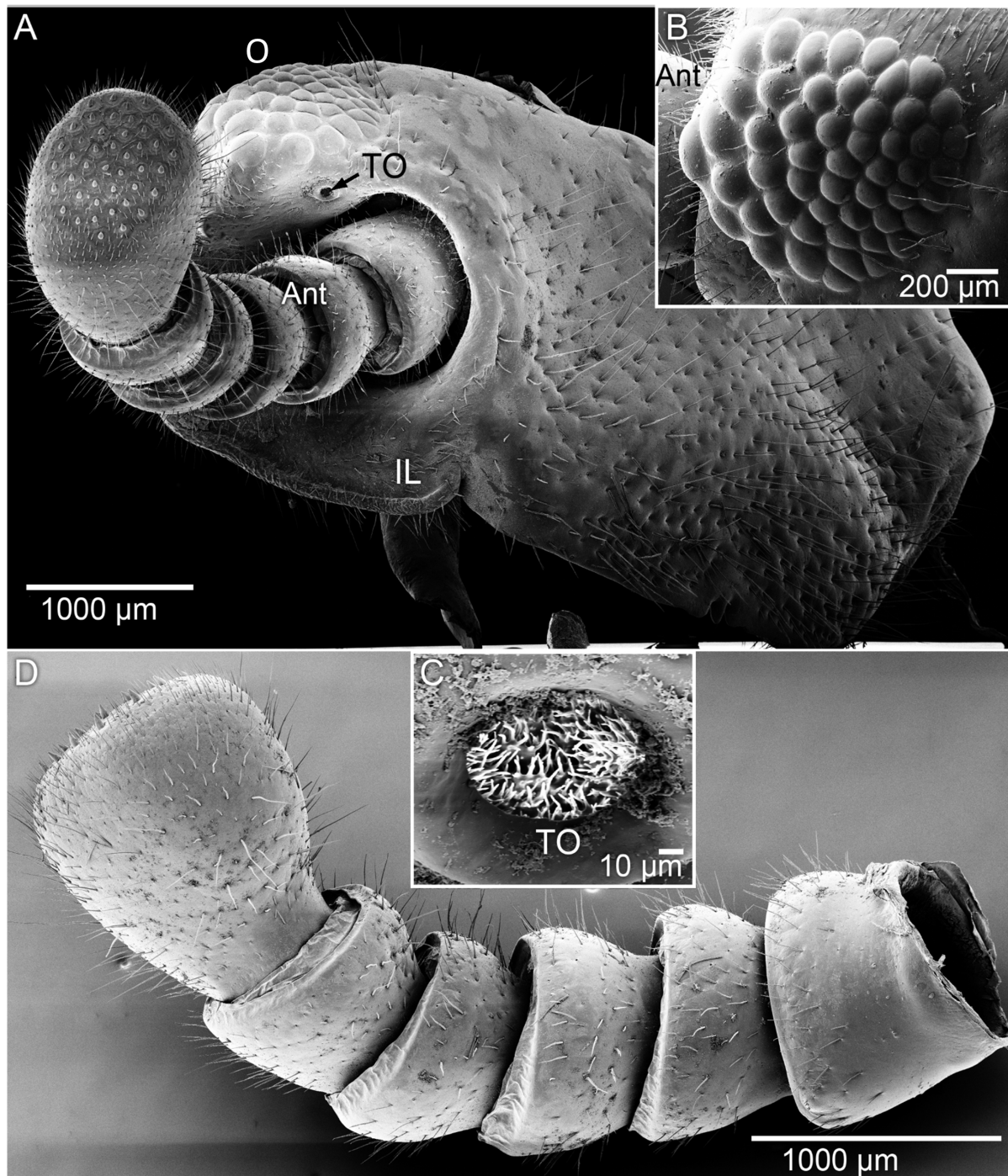
COLOUR. Head medium brown, faded from green. Antennae medium brown. Legs medium brown, tarsal claws apically dark brown. Tergites light brown, faded green medially, with darker brown posterior margin. Paratergite tips medium brown with darker edges. Anal shield dark green, edges faded to brown (Fig. 2B).

HEAD (Fig. 7A–C). Number of ommatidia 50 (Fig. 7B). Organ of Tömösváry placed midway between ocelli and antennal groove (Fig. 7A), with its typical coral-like inner structure (Fig. 7C).

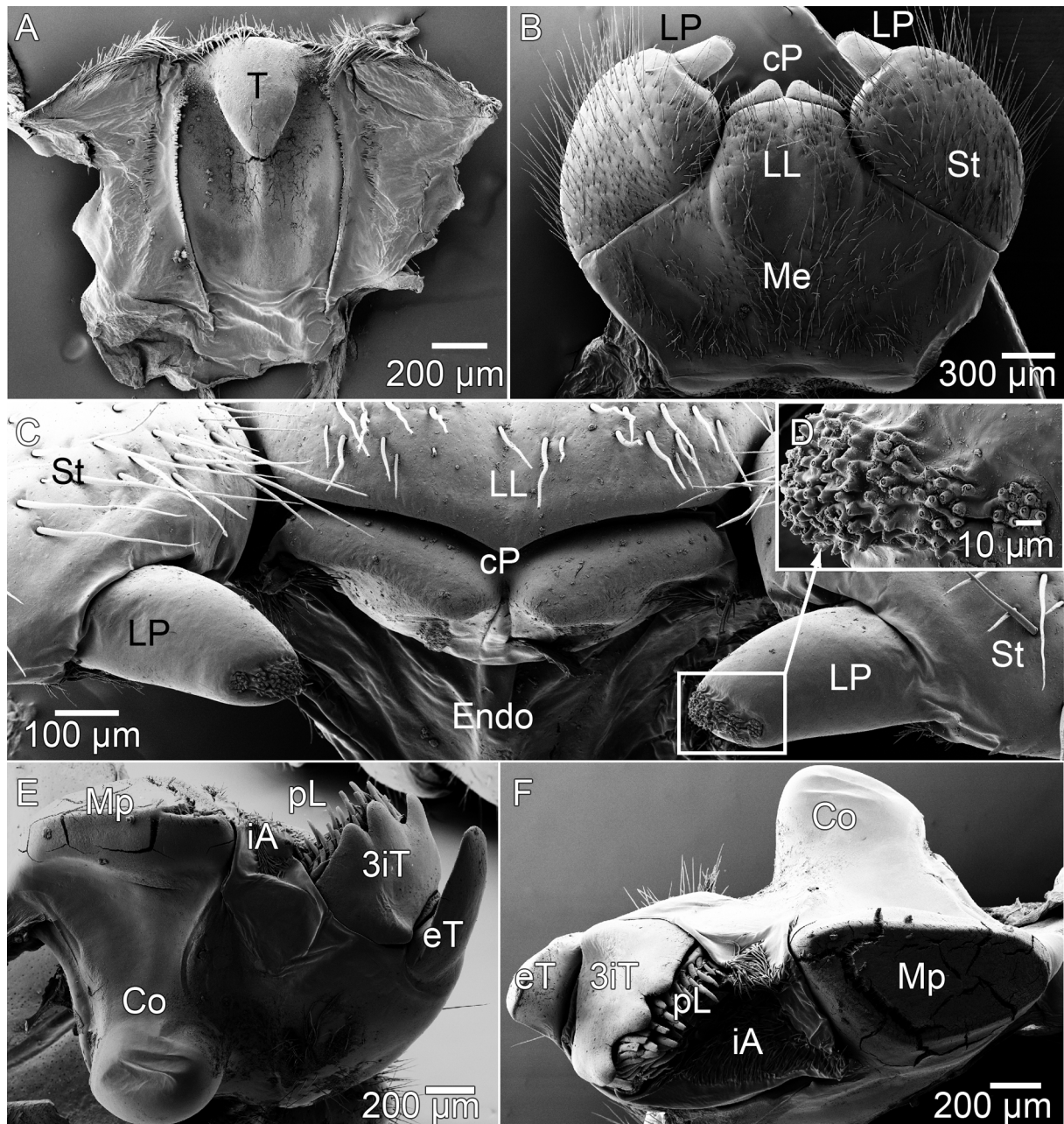
ANTENNAE (Fig. 7A, D). Reaching leg pair 3, 6 visible antennomeres. Antennomere lengths: 6>1>2=3>4=5. Antennomere 6 apically swollen, number of apical cones 32/44.

EPIPHARYNX (Fig. 8A). With an extraordinarily large inner tooth.

MANDIBLE (Fig. 8E–F). Inner tooth 3-cusped. Pectinate lamellae with 6 or 7 rows of teeth. Condylus at anterior margin with two ridges.

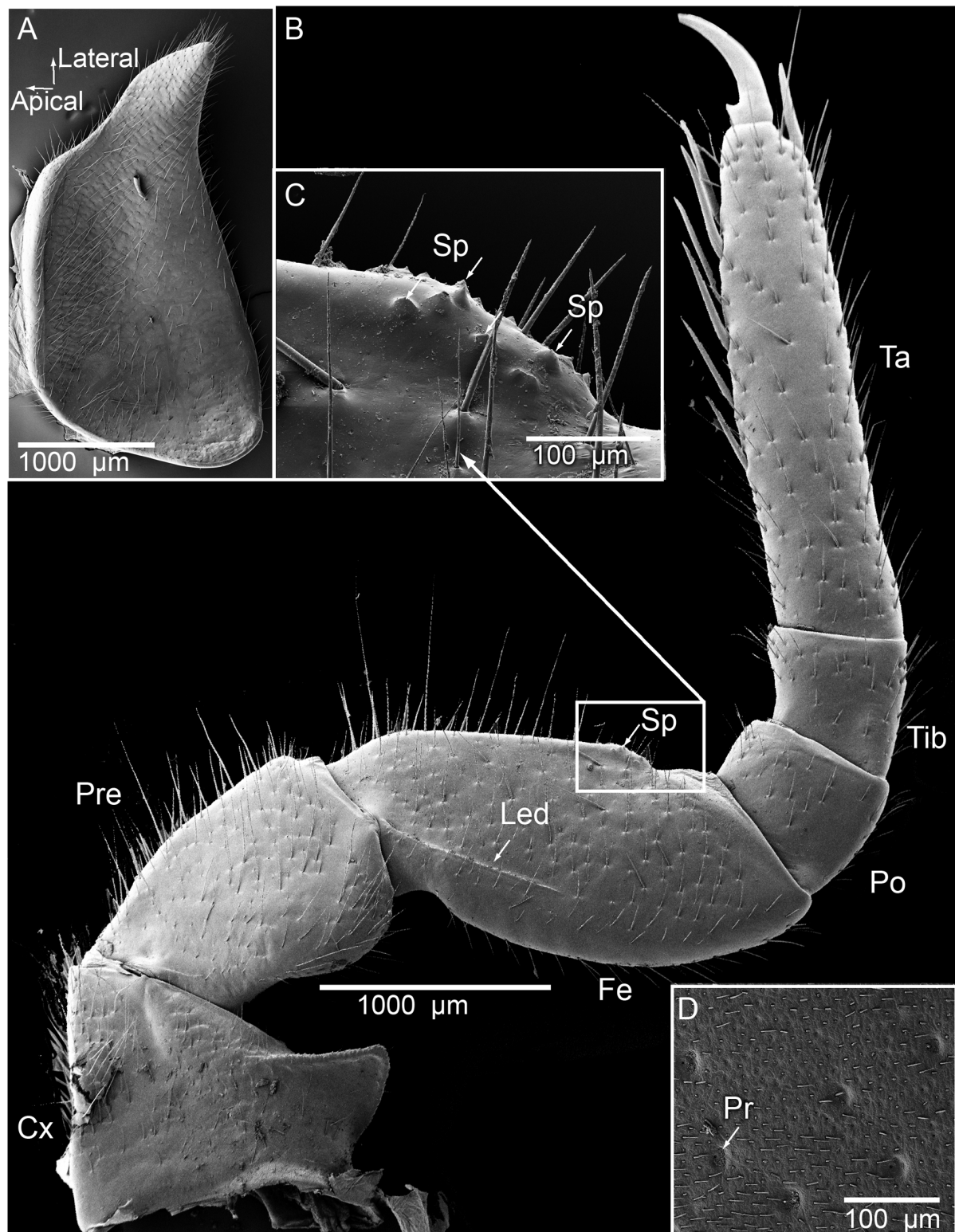


**Fig. 7.** *Zephronia viridisoma* Rosenmejer & Wesener sp. nov., paratype, ♂ (ZFMK MYR8786), head, scanning electron micrographs. **A.** Lateral view. **B.** Right eye. **C.** Organ of Tömösváry. **D.** Left antenna, lateral view. Abbreviations: Ant = antenna; IL = incisura lateralis; O = ommatidia; TO = organ of Tömösváry.



**Fig. 8.** *Zephronia viridisoma* Rosenmejer & Wesener sp. nov., paratype, ♂ (ZFMK MYR8786), mouthparts, scanning electron micrographs. **A.** Epipharynx, ventral view. **B.** Gnathochilarium, underside. **C.** Gnathochilarium frontal view at lateral palps and central pads. **D.** Detail of sensory cones at lateral palps. **E.** Right mandible, dorsal view. **F.** Right mandible, mesal view. Abbreviations: 3iT = 3-combed inner tooth; Co = condylus; cP = central pads; Endo = endochilarium; eT = external tooth; iA = inner area; LL = lamellae linguales; LP = lateral palpi; Me = mentum; Mp = molar plate; pL = pectinate lamellae; St = stipes; T = tooth of epipharynx.





**Fig. 9.** *Zephronia viridisoma* Rosenmejer & Wesener sp. nov., paratype, ♂ (ZFMK MYR8786), legs and pleurite (laterotergite), scanning electron micrographs. **A.** First pleurite. **B.** Left midbody leg, posterior view. **C.** Leg, femur, detail of sclerotized teeth. **D.** Surface of midbody tergite. Abbreviations: Cx = coxa; Fe = femur; Led = ledge; Po = postfemur; Pr = protuberance; Pre = prefemur; Sp = small triangular spines; Ta = tarsus; Tib = tibia.

GNATHOCHILARIUM (Fig. 8B–D). Lamellae linguales with numerous long setae, medially glabrous. Stipes and mentum with numerous long setae in a regular pattern. Sensory cones on gnathochilarium palps in clusters (Fig. 8D).

COLLUM. With short setation, evenly distributed across surface.

THORACIC SHIELD. Thoracic shield grooves wide and deep, with 9 sclerotized ledges along inner ridge of grooves.

TERGITES (Fig. 9D). Tergites glabrous, with dull orange skin like surface. At high magnification tiny setae and knobs become visible. Paratergite tips on posterior half projecting backwards (Fig. 12A–B).

ENDOTERGUM (Fig. 6B). With a regular flat margin. Outer zone with three dense rows of irregular marginal setae, some of them extending beyond posterior margin. A single row of rounded cuticular impressions present next to marginal ridge. Intersegmental membrane smooth, without cones and with very few setae.

STIGMATIC PLATE (Fig. 10A). First plate with a rounded sub-triangular apex. More posterior plates similar to those of other representatives of the family, half-covered by the pleurites (Fig. 12C).

PLEURITES (Figs 9A, 12D). Pleurite 1 projecting strongly, with sharp apex. Pleurite 2 projecting slightly less than 1 and with more rounded apex (Fig. 12D). Projection absent from pleurite 3 (Fig. 12D).

LEGS. Ventral spines on leg 1 1/1, on leg 2 3/2, on leg 3 4/4. Apical spine on leg 3 absent. A single apical spine and 5 or 6 ventral spines on midbody legs (Fig. 9B). Femur regularly shaped, 2.2 times longer than wide, sclerotized ledge of medium length, inner margin apically with 5 or 6 small rounded triangular spines on ventral side (Fig. 9B–C). Tarsus 4.2 times longer than wide.

ANAL SHIELD. Well-rounded and glabrous. Ventral side with dark coloured. A medium-sized locking carina placed slightly closer to pleurite than margin (Fig. 12D).

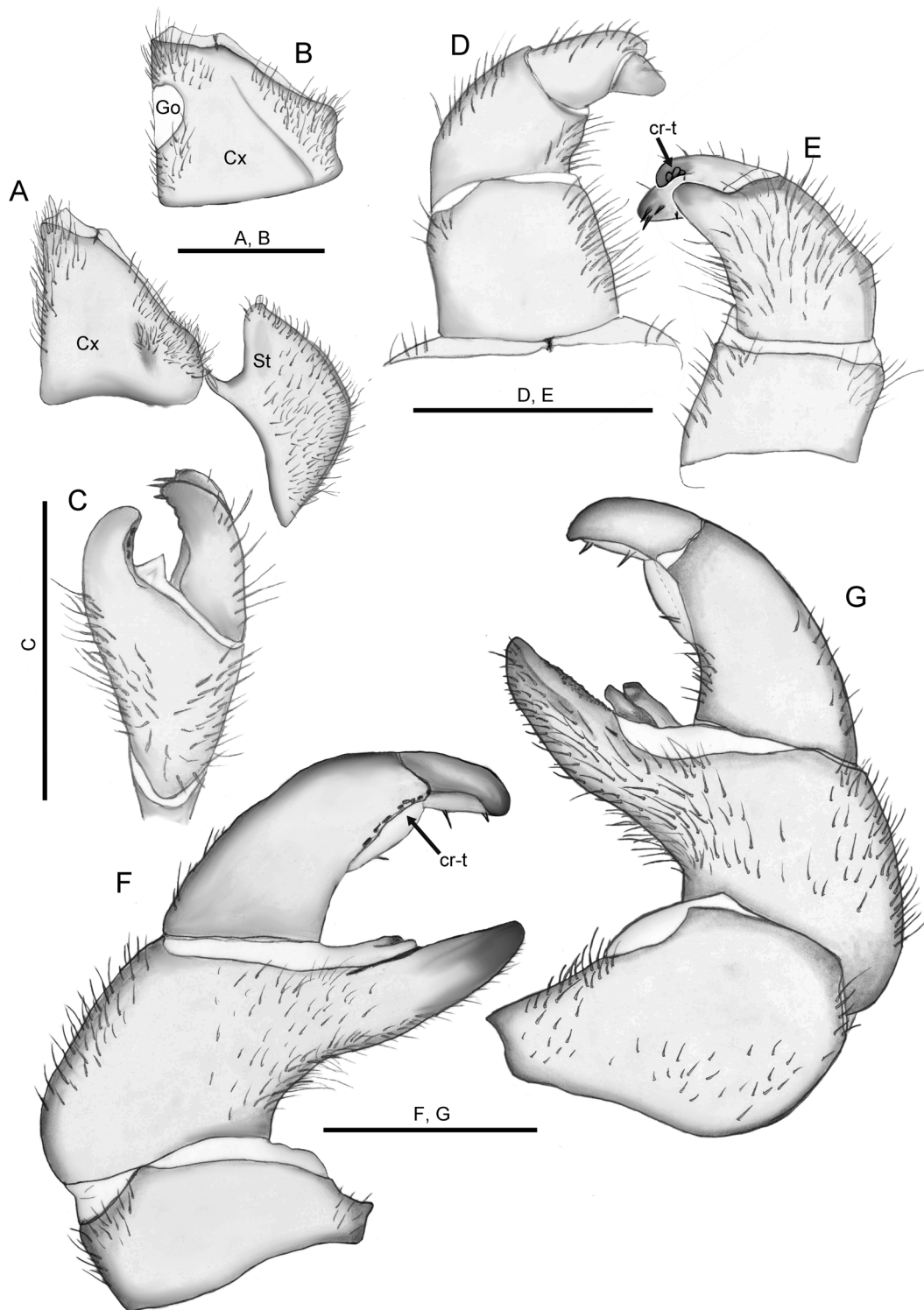
MALE GONOPORE (Fig. 10B). Inconspicuous, consisting of large membranous opening located directly at mesal margin.

ANTERIOR TELOPODS (Fig. 10C–E). With long setae medially on the first 2 podomeres, covering posterior part on podomere 2. Podomere 1 rectangular, as long as wide. Podomere 2 in anterior view as wide as but slightly narrower than podomere 1. Immobile finger barely visible in anterior view (Fig. 10D), short, not protruding up to podomere 4 (Fig. 10C). Podomere 3 long and wide, with rounded projection on posterior side, bearing 3 crenulated teeth. Podomere 4 very narrow and short, with 3 large spines near apex, and a smaller spine near edge to podomere 3.

POSTERIOR TELOPODS (Fig. 10F–G). Podomere 2 setose, immovable finger straight, apically tapering, with rows of small circular sclerotized spots. Membranous lobe between podomere 3 and 4 bearing 2 elongated processes, fused at base. Podomere 3 with 8 or 9 small crenulated teeth on posterior side. Membranous lobe on podomere 3 with single spine. Podomere 4 slightly curved towards immovable finger, membranous lobe with 2 spines. Setation on podomere 2 primarily on anterior side.

#### **Description of female paratype**

Length 25.6 mm. Width of thoracic shield 12.3 mm, of widest tergite (8) 13.7 mm. Height of thoracic shield: 8.4 mm, of highest tergite (8) 9.3 mm. Antennae reaching leg pair 3. Apical cones left/right:



**Fig. 10.** *Zephronia viridisoma* Rosenmejer & Wesener sp. nov., holotype, ♂ (NHMD 621695), drawings. **A.** Coxa of first left leg with stigmatic plate, posterior view. **B.** Coxa of second left leg with gonopore, posterior view. **C.** Left anterior telopod, lateral view on podomeres 2–4. **D.** Left anterior telopod, anterior view. **E.** Left anterior telopod, posterior view. **F.** Right posterior telopod, posterior view. **G.** Right posterior telopod, anterior view. Abbreviations: cr-t = crenulated teeth; Cx = coxa; Go = gonopore; St = stigmatic plate. Scale bars = 1 mm.

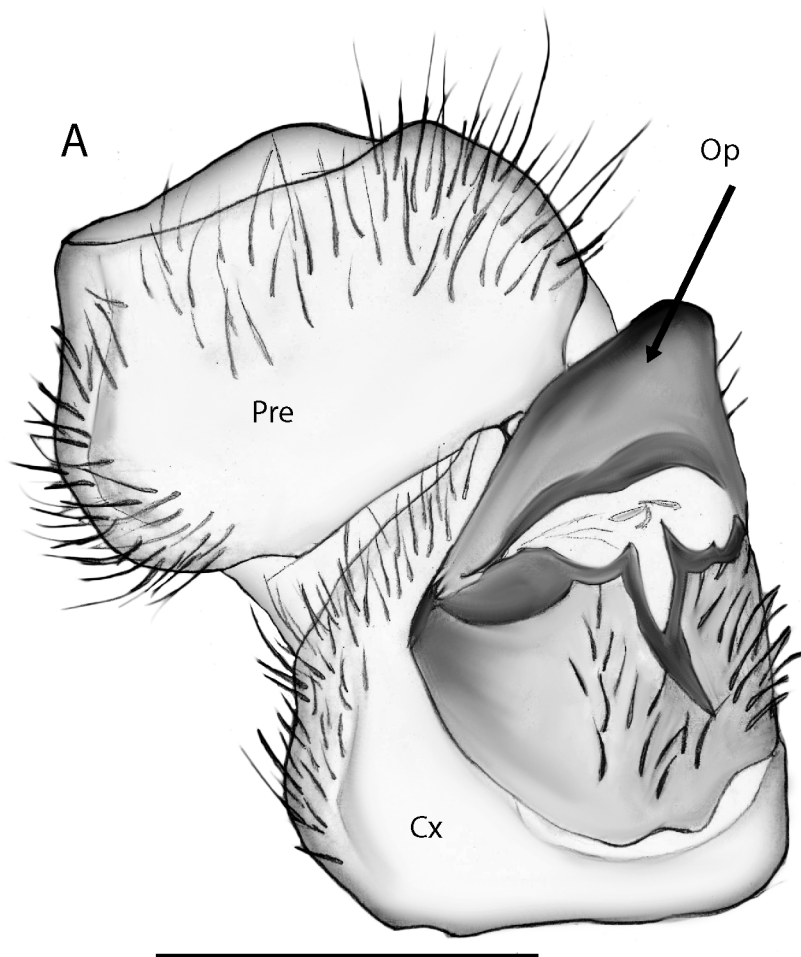
25/25. Subanal plate well rounded. Vulvae (Fig. 11): with a large pointed operculum (Op). External lateral plate (EP) and inner mesal plate (IP) fused at bottom.

Another female paratype was used for microcomputed tomography. The resulting volume rendering is shown in Fig. 12. While this approach revealed no significant additional details it serves to illustrate morphology of the specimen in an excellent way, much better than any photograph.

## Discussion

### Identity and biogeography of the genus *Sphaerobelum*

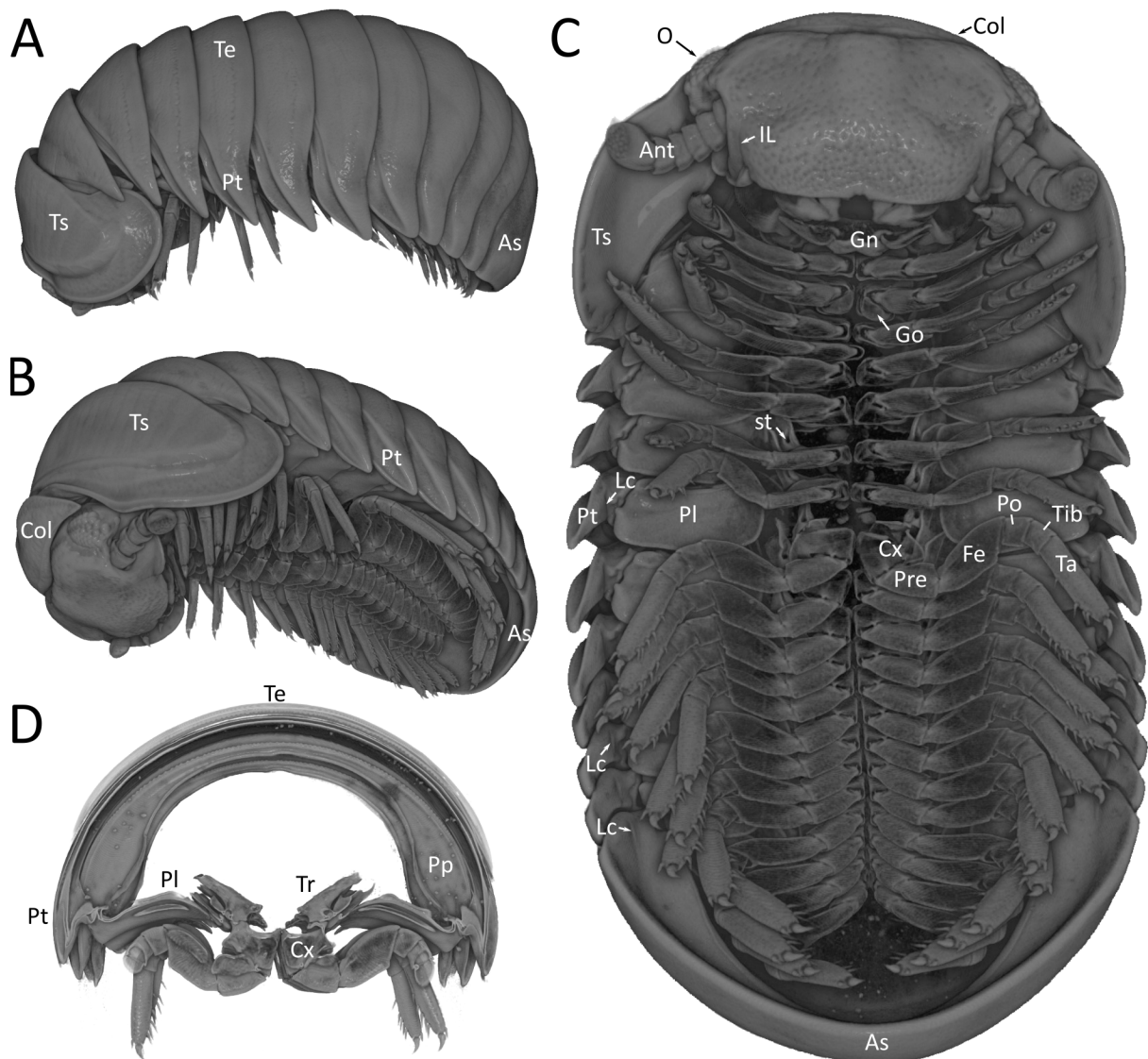
*Sphaerobelum aesculus* sp. nov. is only tentatively placed in the genus *Sphaerobelum* as it differs in some characters from the other species of the genus. The immovable finger of the posterior telopod in *S. aesculus* sp. nov. is only weakly swollen, and the swelling is not projecting above the telopod margins (Fig. 5B) in contrast to all other species of *Sphaerobelum* (see Wongthamwanich *et al.* 2012). *Sphaerobelum aesculus* sp. nov. represents the southern-most known occurrence for the genus, with other species of *Sphaerobelum* having been collected at least 1000 km further north. *Sphaerobelum aesculus*



**Fig. 11.** *Zephronia viridisoma* Rosenmejer & Wesener sp. nov., paratype, ♀ (NHM D621696), drawings. **A.** Second right coxa and prefemur with vulva, posterior view. Abbreviations: Cx = coxa; Op = operculum; Pre = prefemur. Scale bar = 1 mm.



sp. nov. differs clearly from the giant pill-millipede genera occurring further south, *Tigridosphaera* Jeekel, 2000, *Sphaeropoeus* Brandt, 1833 and *Castanotherium* Pocock, 1895. *Sphaerobelum aesculus* sp. nov. differs clearly from all known *Castanotherium* species in which the posterior telopod only consists of three joints, not four as in the new species described here. *Sphaerobelum aesculus* sp. nov. differs from *Sphaeropoeus* (see Wesener 2016b) as well as *Tigridosphaera* (see Jeekel 2000; Enghoff *et al.* 2015; Wesener 2016a) in details of the anterior telopod. In *Tigridosphaera* the last podomere of the anterior telopod is extending backwards producing a sharp process (very similar to the species of *Prionobelum*



**Fig. 12.** *Zephronia viridisoma* Rosenmejer & Wesener sp. nov., paratype, ♀ (ZFMK MYR8787), volume rendering based on micro-computed tomography. Stored as cybertype under <https://doi.org/10.5281/zenodo.4548243>. **A.** Habitus, lateral view. **B.** Habitus, ventro-lateral view. **C.** Habitus, ventral view. **D.** Body-ring architecture, cross section through midbody-ring. Abbreviations: Ant = Antennae; As = anal shield; ts = thoracic shield; Col = collum; Cx = Coxa; Fe = femur; Gn = gnathochilarium; Go = gonopore; IL = incisura lateralis; Lc = locking carina; O = ommatidia; Pl = pleurite; Po = postfemur; Pp = prophragma; Pre = prefemur; Pt = paratergite; st = stigma, Ta = tarsus; Te = tergite; Tib = tibia; Tr = tracheal apodeme; ts = thoracic shield. Not to scale.

Verhoeff, 1924 (see Mauriès 2001 for a revision), while in *Sphaeropoeus* the third podomere of the anterior telopod has a characteristic process (see Wesener 2016b for a revision). Genetically, *S. aesculus* sp. nov. does group, albeit weakly supported (Fig. 1), with a specimen of an unknown genus from Malaysia. Therefore, *S. aesculus* sp. nov. is either a distant branch of *Sphaerobelum*, with potentially additional species occurring in southern Thailand or Malaysia, or belongs to an as yet undescribed genus.

### Intra- and interspecific distances of the COI gene

The barcoding studies of Zephroniidae giant pill-millipedes are currently biased towards interspecific distances, as only a few intraspecific sequences, often from the same locality, are available. Therefore any interpretation of intraspecific genetic variation in species of the Zephroniidae is currently difficult. The 6.1% p-distance in the COI barcoding gene observed between the two different populations of *S. aesculus* sp. nov. are certainly high for intraspecific distances, higher than the up to 5% observed in the geographically widespread European pill millipede species *Glomeris marginata* (Villers, 1789) and *G. klugii* Brandt, 1833 (Reip & Wesener 2018; Wesener & Conrad 2016). Only future studies, once females of the species become available from the type locality, or male specimens from Khao Luang, will show if the 6.1% correspond to intra- or interspecific distances. The observed interspecific distances of the two new Thai Zephroniidae species towards related species are slightly higher (minimum 16.8%) than those observed in giant pill-millipedes from Madagascar, where the species of *Sphaeromimus* de Saussure & Zehntner, 1902 show interspecific distances of 8.3–20.8% (Wesener *et al.* 2014; Moritz & Wesener 2017), while the interspecific distances in the less well-sampled genus *Zoosphaerium* are 9.1–20% (Sagorny & Wesener 2017; Wesener & Anilkumar 2020; Wesener & Sagorny 2021). One reason behind the large interspecific distances in our two new species from southern Thailand might be that their closest relatives have not been discovered or sampled yet.

### Acknowledgements

Many thanks to the curator Peter Schwendinger (MHNG) for loaning out their substantial giant pill-millipede collection. Claudia Etzbauer (ZFMK) provided invaluable help and advise in the molecular lab. Karin Ulmen (ZFMK) advised and helped at the scanning electron microscope. Thorsten Klug (ZFMK) made the multi-layer photographs. We thank the German Research Foundation (DFG) for funding within the scope of the project “Phylogeny of the Diplopoda: micro-CT scans, morphology and morphometry of all millipede orders” (DFG WE 2479/4-1) by Alexander Blanke and TW. We also thank the editor Nesrine Akkari and the reviewers Sergei Golovatch, Natdanai Likhitrakarn and Oliver Macek for their constructive reviews of the manuscript. The ZFMK hosted TR for her stay in Bonn. This study is part of TR’s Master thesis conducted at the University of Copenhagen.

### References

- Altschul S.F., Madden T.L., Schöffner A.A., Zhang J., Zhang Z., Miller W. & Lipman D.J. 1997. Gapped BLAST and PSIBLAST: a new generation of protein database search programs. *Nucleic Acids Research* 25 (17): 3389–3402. <https://doi.org/10.1093/nar/25.17.3389>
- Astrin J.J. & Stüben P.E. 2008. Phylogeny in cryptic weevils: molecules, morphology and new genera of western Palearctic Cryptorhynchinae (Coleoptera: Curculionidae). *Invertebrate Systematics* 22: 503–522. <https://doi.org/10.1071/IS07057>
- Clements R., Sodhi N.S., Schilthuizen M. & Ng P.K. 2006. Limestone karsts of Southeast Asia: imperiled arks of biodiversity. *Bioscience* 56 (9): 733–742. [https://doi.org/10.1641/0006-3568\(2006\)56\[733:LKOSAI\]2.0.CO;2](https://doi.org/10.1641/0006-3568(2006)56[733:LKOSAI]2.0.CO;2)
- Engelhoff H. 2005. The millipedes of Thailand (Diplopoda). *Steenstrupia* 29: 87–103.

- Enghoff H., Sutcharit C. & Panha S. 2007. The shocking pink dragon millipede, *Desmoxytes purpuresea*, a colourful new species from Thailand (Diplopoda: Polydesmida: Paradoxosomatidae). *Zootaxa* 1563: 31–36. <https://doi.org/10.11646/zootaxa.1563.1.3>
- Enghoff H., Golovatch S., Short M., Stoev P. & Wesener T. 2015. Diplopoda. In: Minelli A. (ed.) *Treatise on Zoology — Anatomy, Taxonomy, Biology. The Myriapoda* 2 (16): 363–453.
- Hall T.A. 1999. BioEdit: a user-friendly biological sequence alignment editor and analysis program for Windows 95/98/NT. *Nucleic Acids Symposium Series* 41: 95–98.
- Hebert P.D., Cywinska A., Ball S.L. & Dewaard J.R. 2003. Biological identifications through DNA barcodes. *Proceedings of the Royal Society of London. Series B: Biological Sciences* 270 (1512): 313–321. <https://doi.org/10.1098/rspb.2002.2218>
- Hirst A.S. 1907. On four new pill-millipedes from the Malay Peninsula and Siam. *Annals and Magazine of Natural History Series* 7 20: 215–219, pl. 10. <https://doi.org/10.1080/00222930709487327>
- Jeekel C.A.W. 2000. A new genus of Sphaeropoeidae from Malaysia (Diplopoda, Sphaerotheriida). *Myriapod Memoranda* 2: 68–70.
- Karsch F. 1881. Neue Juliden des Berliner Museums, als Prodrum einer Juliden-Monographie. *Zeitschrift für die gesamten Naturwissenschaften, Dritte Folge* 6: 3–79.
- Likhitrakarn N., Golovatch S.I., Srisonchai R. & Panha S. 2019. A new species of the millipede genus *Cryptocorypha* Attems, 1907, from northern Thailand (Polydesmida, Pyrgodesmidae). *ZooKeys* 833: 121–132. <https://doi.org/10.3897/zookeys.833.32413>
- Likhitrakarn N., Golovatch S.I., Srisonchai R. & Sutcharit C. 2021. Two new species of the giant pill-millipede genus *Zephronia* Gray, 1832 from Thailand (Diplopoda: Sphaerotheriida: Zephroniidae). *Tropical Natural History* 21: 12–26.
- Limaye A. 2012. Drishti: a volume exploration and presentation tool. In: Developments in X-ray Tomography VIII. Proceedings SPIE 8506: 85060X. International Society for Optics and Photonics. <https://doi.org/10.1117/12.935640>
- Mauriès J.-P. 2001. Sur l'identité de *Zephronia hainani* Gressitt, 1941, à propos de la description d'un nouveau *Prionobelum* (Diplopoda, Sphaerotheriida, Sphaeropoeidae) de Hainan, Chine. *Zoosystema* 23 (1): 131–142.
- Moritz L. & Wesener T. 2017. Integrative description of two new species of Malagasy chirping giant pill-millipedes, genus *Sphaeromimus* (Diplopoda, Sphaerotheriida, Arthrosphaeridae). *European Journal of Taxonomy* 381: 1–25. <https://doi.org/10.5852/ejt.2017.381>
- Nei M. & Kumar S. 2000. *Molecular Evolution and Phylogenetics*. Oxford University Press, New York.
- Pimvichai P., Enghoff H., Panha S. & Backeljau T. 2018. Morphological and mitochondrial DNA data reshuffle the taxonomy of the genera *Atopochetus* Attems, *Litostrophus* Chamberlin and *Tonkinbolus* Verhoeff (Diplopoda: Spirobolida: Pachybolidae), with descriptions of nine new species. *Invertebrate Taxonomy* 32: 159–195. <https://doi.org/10.1071/IS17052>
- Pimvichai P., Enghoff H., Panha S. & Backeljau T. 2020. Integrative taxonomy of the new millipede genus *Coxobolellus*, gen. nov. (Diplopoda: Spirobolida: Pseudospirobolellidae), with descriptions of ten new species. *Invertebrate Systematics* 34 (6): 591–617. <https://doi.org/10.1071/IS20031>
- QGIS Development Team 2018. QGIS Geographic Information System. Open Source Geospatial Foundation Project. Available from <http://qgis.osgeo.org> [accessed 27 Jul. 2021].
- Reip H.S. & Wesener T. 2018. Intraspecific variation and phylogeography of the millipede model organism, the black pill millipede *Glomeris marginata* (Villers, 1789) (Diplopoda, Glomerida,

- Glomeridae). In: Stoev P. & Edgecombe G.D. (eds) Proceedings of the 17<sup>th</sup> International Congress of Myriapodology, Krabi, Thailand. *ZooKeys* 741: 93–131. <https://doi.org/10.3897/zookeys.741.21917>
- Sagorny C. & Wesener T. 2017. Two new giant pill-millipede species of the genus *Zoosphaerium* endemic to the Bemanevika area in northern Madagascar (Diplopoda, Sphaerotheriida, Arthrosphaeridae). *Zootaxa* 4263 (2): 273–294.
- Schindelin J., Arganda-Carreras I., Frise E., Kaynig V., Longair M., Pietzsch T., Preibisch S., Rueden C., Saalfeld S., Schmid B., Tinevez J.-Y., White D.J., Hartenstein V., Eliceiri K., Tomancak P. & Cardona A. 2012. Fiji: an open-source platform for biological-image analysis. *Nature methods* 9 (7): 676–682. <https://doi.org/10.1038/nmeth.2019>
- Semenyuk I., Golovatch S.I. & Wesener T. 2018. Four new species of giant pill-millipedes from Vietnam (Sphaerotheriida: Zephroniidae). *Zootaxa* 4459 (3): 535–550. <https://doi.org/10.11646/zootaxa.4459.3.7>
- Semenyuk I., Golovatch S.I. & Wesener T. 2020. Some new or poorly-known Zephroniidae (Diplopoda, Sphaerotheriida) from Vietnam. *ZooKeys* 930: 37–60. <https://doi.org/10.3897/zookeys.930.47742>
- Srisonchai R., Enghoff H., Likhitrakarn N., Sutcharit C. & Panha S. 2016. Four colourful new species of dragon millipedes, genus *Desmoxytes* Chamberlin, 1923, from northern Thailand (Diplopoda: Polydesmida: Paradoxosomatidae). *Zootaxa* 4170 (1): 93–113. <https://doi.org/10.11646/zootaxa.4170.1.4>
- Tamura K., Stecher G., Peterson D., Filipinski A. & Kumar S. 2013. MEGA6: molecular evolutionary genetics analysis version 6.0. *Molecular Biology and Evolution* 30 (12): 2725–2729. <https://doi.org/10.1093/molbev/mst197>
- Wesener T. 2016a. The giant pill-millipedes, order Sphaerotheriida – An annotated species catalogue with morphological atlas and list of apomorphies (Arthropoda: Diplopoda). *Bonn Zoological Bulletin - Supplementum* 63: 1–104.
- Wesener T. 2016b. Redescription and phylogenetic analysis of the type species of the giant pill-millipede genus *Sphaeropoeus* Brandt, 1833 (Diplopoda, Sphaerotheriida, Zephroniidae). *Zootaxa* 4184 (1): 141–157. <https://doi.org/10.11646/zootaxa.4184.1.9>
- Wesener T. 2019. First records of giant pill-millipedes from Laos (Diplopoda, Sphaerotheriida, Zephroniidae). *Zootaxa* 4563 (2): 201–248. <https://doi.org/10.11646/zootaxa.4563.2.1>
- Wesener T. & Anilkumar P.A. 2020. The millipedes collected by the Museum “La Specola” on Madagascar 1989/1991, with the description of three new species of giant pill-millipedes (Diplopoda, Sphaerotheriida, Arthrosphaeridae). *ZooKeys* 930: 3–35. <https://doi.org/10.3897/zookeys.930.47620>
- Wesener T. & Conrad C. 2016. Local hotspots of endemism or artifacts of incorrect taxonomy? The status of microendemic pill millipede species of the genus *Glomeris* in Northern Italy (Diplopoda, Glomerida). *PLoS ONE* 11 (9): e0162284. <https://doi.org/10.1371/journal.pone.0162284>
- Wesener T. & Sagorny C. 2021. Seven new giant pill-millipede species and numerous new records of the genus *Zoosphaerium* from Madagascar (Diplopoda, Sphaerotheriida, Arthrosphaeridae). *European Journal of Taxonomy* 758 (1): 1–48. <https://doi.org/10.5852/ejt.2021.758.1423>
- Wesener T., Minh-Tu Le D. & Loria S.F. 2014. Integrative revision of the giant pill-millipede genus *Sphaeromimus*, with the description of seven new species (Diplopoda, Sphaerotheriida, Arthrosphaeridae). *ZooKeys* 414: 67–104. <https://doi.org/10.3897/zookeys.414.7730>
- Wesener T., Wongthamwanich N. & Moritz L. 2021. Description of the first species of Glomeridesmida from Thailand (Diplopoda, Glomeridesmida, Glomeridesmidae). *Zookeys* 1024: 137–156. <https://doi.org/10.3897/zookeys.1024.63678>

Wongthamwanich N., Panha, S. Sierwald, P. Wesener T. & Thirakhupt K. 2012. A new species of the giant pill-millipede genus *Sphaerobelum* Verhoeff, 1924 from northern Thailand, with an extensive description and molecular characters (Diplopoda: Sphaerotheriida: Zephroniidae). *Zootaxa* 3220: 29–43. <https://doi.org/10.11646/zootaxa.3220.1.2>

Wongthamwanich N., Panha S., Sitthicharoenchai D., Pradatsundarasar A., Seelanan T., Enghoff H. & Thirakhupt K. 2013 (for 2012). Daily activities of the giant pill-millipede *Zephronia* cf. *viridescens* Attems, 1936 (Diplopoda: Sphaerotheriida: Zephroniidae) in a deciduous forest in Northern Thailand. *Zoological Studies* 51: 913–926.

Zhao Y., Yu J., & Liu W. 2020. A molecular-based phylogeny of the millipede genus *Sphaerobelum* Verhoeff, 1924, with the first record of the genus from mainland China (Diplopoda: Sphaerotheriida: Zephroniidae). *Annales de la Société entomologique de France (NS)* 56 (4): 341–348.

*Manuscript received: 19 February 2021*

*Manuscript accepted: 21 June 2021*

*Published on: 11 August 2021*

*Topic editor: Nesrine Akkari*

*Desk editor: Pepe Fernández*

Printed versions of all papers are also deposited in the libraries of the institutes that are members of the *EJT* consortium: Muséum national d’histoire naturelle, Paris, France; Meise Botanic Garden, Belgium; Royal Museum for Central Africa, Tervuren, Belgium; Royal Belgian Institute of Natural Sciences, Brussels, Belgium; Natural History Museum of Denmark, Copenhagen, Denmark; Naturalis Biodiversity Center, Leiden, the Netherlands; Museo Nacional de Ciencias Naturales-CSIC, Madrid, Spain; Real Jardín Botánico de Madrid CSIC, Spain; Zoological Research Museum Alexander Koenig, Bonn, Germany; National Museum, Prague, Czech Republic.

## Supplementary material

**Supp. file 1.** Estimates of Evolutionary Divergence between Sequences. The number of base differences per site from between sequences are shown. The analysis involved 34 nucleotide sequences. Codon positions included were 1<sup>st</sup> +2<sup>nd</sup> +3<sup>rd</sup>. All ambiguous positions were removed for each sequence pair. There were a total of 674 positions in the final dataset. Evolutionary analyses were conducted in MEGA6 (Tamura *et al.* 2013). <https://doi.org/10.5852/ejt.2021.762.1457.4821>

# ZOBODAT - [www.zobodat.at](http://www.zobodat.at)

Zoologisch-Botanische Datenbank/Zoological-Botanical Database

Digitale Literatur/Digital Literature

Zeitschrift/Journal: [European Journal of Taxonomy](#)

Jahr/Year: 2021

Band/Volume: [0762](#)

Autor(en)/Author(s): Rosenmejer Trine, Enghoff Henrik, Moritz Leif, Wesener Thomas

Artikel/Article: [Integrative description of new giant pill-millipedes from southern Thailand \(Diplopoda, Sphaerotheriida, Zephroniidae\) 108-132](#)