

# Entomofauna

ZEITSCHRIFT FÜR ENTOMOLOGIE

---

Band 8, Heft 4      ISSN 0250-4413      Linz, 10. Februar 1987

---

On Crambidae in the collection  
of the Copenhagen Museum  
(Lepidoptera, Pyraloidea)

Julius Ganév

## Abstract

Undetermined material of *Crambidae*, deposited at the Zoological Museum in Copenhagen, Denmark, was studied. *Pareromene senekai* sp.n., *Euchromius karsholti* sp.n., *Mesocrambus canariensis* sp.n. and *Catoptria mytilella hermesii* ssp.n. are described. Faunistic data on some rare species from the palearctic region are reported.

## Zusammenfassung

Undeterminiertes *Crambidae*-Material aus dem Zoologischen Museum in Kopenhagen, Dänemark, wurde einer Untersuchung unterzogen. *Pareromene senekai* sp.n., *Euchromius karsholti* sp.n., *Mesocrambus canariensis* sp.n. und *Catoptria mytilella hermesii* ssp.n. werden beschrieben. Für einige wenige gefangene Arten der paläarktischen Faunenregion werden neue Verbreitungsangaben gebracht.

This taxonomic and faunistic study is compiled on the basis of material of *Crambidae* kept at the Zoological Museum Copenhagen and sent to me for study by Dr. Ole KARSHOLT. The Material originates from the Palearctic region, however, it is chiefly from Europe, Saudi Arabia, North India, Lybia, China, the Canary Islands and separate specimens from Central Asia and Siberia.

Three new species, namely *Pareromene senekai* sp.n., *Euchromius karsholti* sp.n. and *Mesocrambus canariensis* sp.n. as well as a new subspecies, *Catoptria mytilella hermesi* ssp.n., are described as a result of the study.

Faunistic data on some rare species from South Europe, Asia and North Africa are reported. The species *Catoptria dimorphella* (STAUDINGER, 1882), known so far from Spain, Syria, Kreta and Cyprus is reported for the first time from continental Greece - Peloponnesus.

I would like to thank my colleague Dr. Ole KARSHOLT for sending me the material.

#### *Pareromene senekai* sp.n.

Diagnosis: Specimens with wing span 12-14 mm. Labial palps 2.5 whitish with black spots. Frons slightly standing out with no expressed peak, not covered with scale,



*Pareromene senekai* sp.n. Holotypus ♂. Lybia, Charian, Wadi El Hira, 25.3.1983, leg. SENEKA, in coll. Zool.Mus. Copenhagen. - Foto: B.ANEV, Sofia.

dark brown. Tegulae yellowish covered with dark spots at the base. Thorax with light yellow scales with dark spots. Antennae in male and female dark brown. Abdomen covered with light yellow scales.

Front wings yellow brown, with black spots unevenly spread, similar to *Pareromene euchromiella* (RAGONOT, 1895) and *Pareromene bilinealis* (AMSEL, 1961). Black dots along the fringe. Fringes white, with brown spots. Hind wings with males white, white females light grey brown.

Genital ♂: (Abb.1) Uncus and Gnathos as with *Pareromene bilinealis*. Costalarm similar to that of *Euchromius bellus* (HÜBNER, 1796). Sacculus well developed, reaching  $\frac{3}{4}$  of the length of the Valva. Valva normal rounded at the top. Aedoeagus straight longer than the Valva with a longer cornutus in the middle and many small cornuti in the front.

Genital ♀: (Abb.2) VIII. Tergit as *Pareromene euchromiella*. Pouch of Ostium sclerotized in  $\frac{2}{3}$  length. Ductus bursae straight. Bursa copulatrix normal, without signum.

Material studied: Holotypus ♂, Lybia, Charian, Wadi El Hira, 25.3.1983 (leg. SENEKA). Paratypus ♀, Lybia, Charian, Wadi El Hira, 25.3.1983 (leg. SENEKA).

*Euchromius superbellus* (ZELLER, 1849)

Greece, Lakonia, Monemvasia, 15.8.1980, 1♂ and 1♀ (leg. CHRISTENSEN); USSR, Volgograd, 18.-24.5.1967, 1♀ (leg. ZOUHAR).

*Euchromius gozmanyi* BLESZYNSKI, 1961

Spain, Andalusia, Prov. Malaga, 24.6.1980, 1♂ (leg. TRAUOGOTT/OLSEN).

*Euchromius rayatellus* (AMSEL, 1949)

Yugoslavia, Crna Gora, Ulcinj, 3.9.1976, 1♂ (leg. VAVRA).

*Euchromius ramburiellus* (DUPONCHEL, 1836)

USSR, Volgograd, 7.-17.5.1967, 1♂ (leg. ZOUHAR).

*Euchromius cambridgei* (ZELLER, 1867)

Lybia, Charian, Wadi El Hira, 13.5.1983, 1♀ (leg. SENEKA); Canary Isl., Gomera, Playa de Santiago, 25.7.1984, 1♂ and 1♀ (leg. STADEL/OLSEN/SKULE).

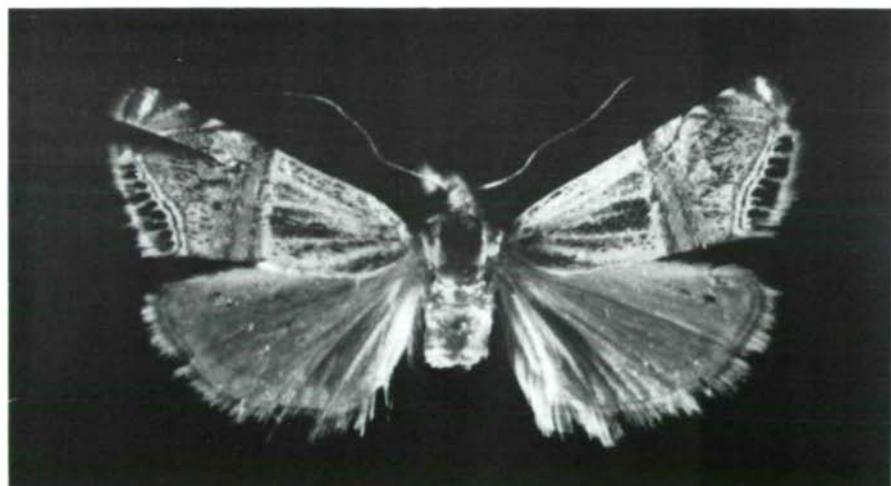
*Euchromius karsholti* sp.n.

Diagnosis: Wing span 15 mm. Tegulae yellowish, with brown line in the middle. No difference in external appearance from *Euchromius hampsoni* (ROTHSCHILD, 1921), however the general background of the front wings darker.

Genitalia ♀: (Abb.3) Lower apophyses long as with *Euchromius viettei* BLESZYNSKI, 1961. VIII.Tergit very complicated, however differing from those of *Euchromius hampsoni* and *Euchromius viettei*. Pouch of Ostium sclerotized. Ductus bursae short. Bursa copulatrix oblonged with signum.

♂ unknown.

Material studied: Holotypus ♀, Saudi Arabia, Djidda, Northern Creek, Feb.1980 (leg. SENEKA/NIELSEN).



*Euchromius karsholti* sp.n. Holotypus ♀. Saudi Arabia, Djidda, Northern Creek, Feb.1980 leg. SENEKA/NIELSEN in coll. Zool. Mus. Copenhagen. - Foto: B.ANEV, Sofia.

*Euchromius vinculellus* (ZELLER, 1847)

Spain, Andalusia, Camina de Istan, 400 m, 29.6.1972, 1♀ (leg. TRAUOGOTT/OLSEN); Malaga, 15.6.1980, 1♂ (leg. TRAUOGOTT/OLSEN).

*Pseudeuchromius latus* (STAUDINGER, 1870)

Greece, Lakonia, Mt.Taygetos, 1000 m, 16.8.1979, 3♂♂;

8.8.1979, 1♂ and 1♀ (leg. CHRISTENSEN).

*Pseudargyria marginepunctalis* (HAMPSON, 1896)

India, Uttar Pradesh, Mussoorie c. 1500-2200 m, 3.-14.7.1978, 3♂♂ and 2♀♀ (leg. Zool. Mus. Exp.).

*Chilo luteellus* (MOTSCHULSKY, 1866)

Greece, Corfu, Kerkira, 15.-22.5.1983, 1♂ (leg. OLSEN).

*Chilo hyrax* BELSZYNSKY, 1965

China, Shanghai, 29.8.1924, 1♀.

*Calamotropha paludella purella* (LEECH, 1889)

China, Shanghai, 30.8.1924, 1♂.

*Calamotropha aureliella* (FISCHER VON RÖSLERSTAMM, 1834)

Thianshan, Aksutal, 1♂.

*Crambus isshiki* MATSUMURA, 1925

USSR, Wladiwostok, 1♂.

*Agriphila brioniella* (ZERNY, 1914)

Lebanon, Beyrouth, 1♀.

*Agriphila latistria* (HAWORTH, [1811])

Greece, Lakonia, Monemvasia, 13.10.1979, 1♂; 29.9.1979, 1♂ (leg. CHRISTENSEN).

*Agriphila trabeatella* (HERRICH-SCHÄFFER; [1848])

Spain, Andalusia, Marbella, Caso Campo, 100 m, 28.9.1982, 1♂ (leg. TRAUOGOTT/OLSEN).

*Agriphila impurella* (HAMPSON, 1896)

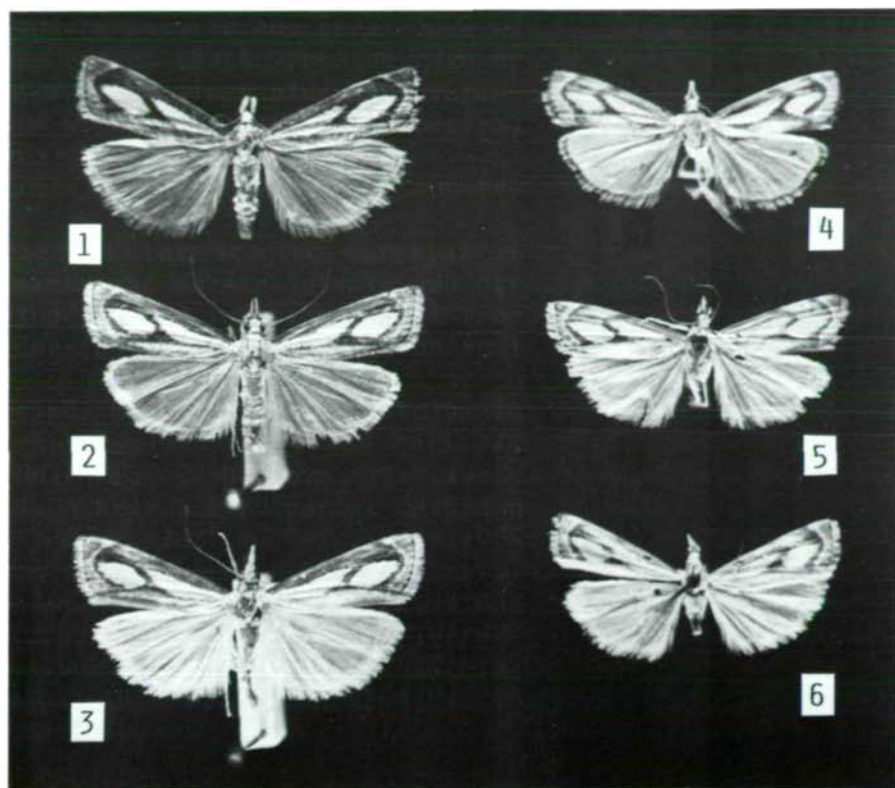
India, Kashmir, Gulmarg, 2600-3000 m, 17.7.-5.9.1978, 2♂♂ and 3♀♀ (leg. Zool. Mus. Exp.).

*Agriphila tolli* (BLESZYNSKY, 1952)

Turkey, Amasia, 1♂; Greece, Lakonia, Monemvasia, 1.10.1983, 1♂ (leg. CHRISTENSEN).

*Catoptria mytilella hermesi* ssp.n.

Diagnosis: Wing span 17-21 mm. Labial palps, frons and thorax same as with *Catoptria mytilella mytilella* (HÜBNER, [1805]). Front wings light brown, much lighter than the nominal subspecies. A lighter shade appears in the space between the lateral transverse stripe and the



1 - 3: *Catoptria mytilella* HBN. 1) Bulgaria, Rhodopen, Passage Rožen, 10.8.1981, ♂, leg. J.GANEV; 2) Austria, Terol sept., 600 m, 1.9.1969, ♂, leg. BURMANN; 3) Italia, Verona, Albisano, 450 m, 26.8.1962, ♀, leg. K.BURMANN.  
4 - 6: *Catoptria mytilella hermesii* ssp.n. 4) Holotypus, Bulgaria, Kožuch near Petritch, 1.9.1982, ♀, leg. and coll. J.GANEV; 5) Paratypus, Bulgaria, v. Hársovo, near Blagoevgrad, 13.8.1982, ♀, leg. PENEV in coll. J.GANEV; 6) Paratypus, Bulgaria, Ali Botush mt., 26.7.1930, ♂, leg. TULESHKOV in coll. NHM Sofia. - Foto: B.ANEV, Sofia.

fringe of the wing, and spaces between the upper edge of the wing to  $r_4$  and the space from the lower side edge up to  $sc$ . Fringes light brown. Hind wings also show variation in the colouring as with the nominal subspecies, however from light grey to white.

Genitalia ♂ and ♀ do not differ from nominal subspecies.

Note: The new subspecies of the studied material is found in south west Bulgaria and Greece in warm and dry localities up to an altitude of 800–1000m. Material from other parts of Bulgaria does not differ from the nominal subspecies.

Material studied: Holotypus ♀, Bulgaria S.W., Vulkanic hill Kožuch near Petritch, 1.9.1982 (leg. and coll. J. GANEV). Paratypes: S.W. Bulgaria, v. Hársovo, 13.9.1982, 1♀ (leg. PENEV in coll. J.GANEV). S.W.Bulgaria, Ogražden mnt., village Sestrino, 650 m, 4♂♂ and 5♀♀, 11.8.1985 (leg. and coll. J.GANEV). S.W.Bulgaria, Ogražden mnt., v. Drenovo, 800 m, 24.8.1984, 1♂ (leg. and coll. J.GANEV). 3♂♂ Ali Botush mnt., 24.–26.7.1930 (leg. TULESHKOV in coll. NHM, Sofia). 3♂♂ and 1♀ Greece, Lakonia, mnt. Taygetos, 1000 m, 16.8.1979 (leg. CHRISTENSEN) in coll. Zool. Mus. Copenhagen).

*Catoptria dimorphella* (STAUDINGER, 1882)

Greece, Lakonia, mnt. Taygetos, 16.8.1979, 1♂ (leg. CHRISTENSEN).

*Mesocrambus canariensis* sp.n.

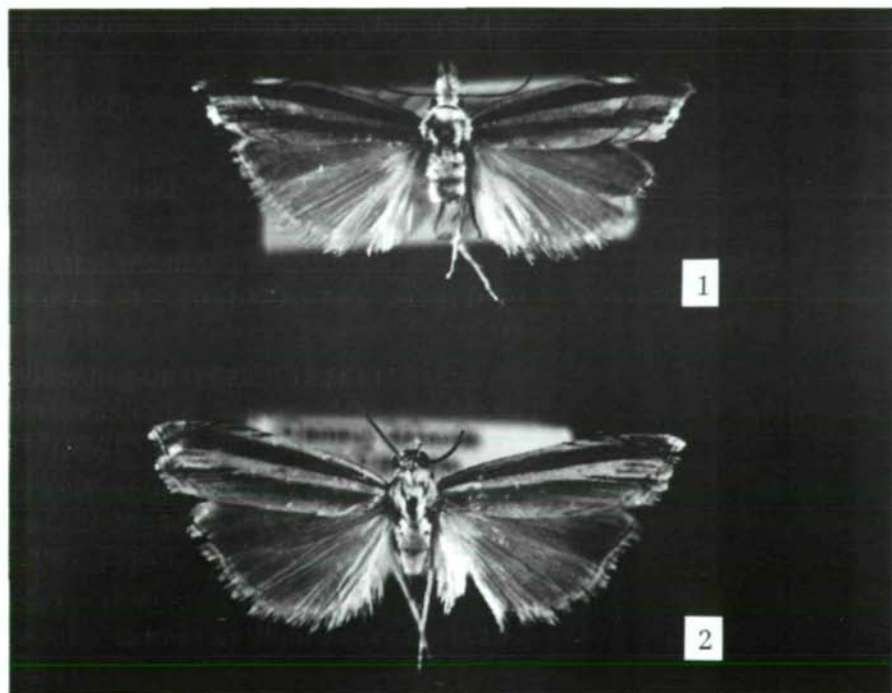
Diagnosis: Species with wing span 27–29 mm. Labial palps 4, light grey–brown, lower part white. Tegulae white, at the end light brown. Thorax white. Front wings similar to those of *Mesocrambus candiellus* (HERRICH-SCHÄFFER, [1848]) and *Mesocrambus tamsi* BLESZYNSKY, 1960, only the apex not so prolonged and curved (see foto) and the transverse inward stripe missing. Fringes white and with brown spots. Hind wings grey. Fringes white with brown spots. Antennae brown.

Genitalia ♂: (Abb.4) Uncus, Gnathos and Tegumen as with *Mesocrambus candiellus*. Costalarm undeveloped, as with *Mesocrambus tamsi*. Valva as with *tamsi*, however the

end narrower and slightly curved protruding Sacculus similar to *tamsi*, however more developed, the base of the protruding part of the Sacculus almost reaches Costalarm. Lower edge of Sacculus prominent, and undulating, missing with *tamsi*. A comparatively deep cut towards the Valva of the lower edge. Aedoeagus slightly curved, same length as Valva.

♀ unknown.

Material studied: Holotypus ♂, Canary Islands, Gran Canaria, Bco. Moya, 200 m, 7.8.1979 (leg. STADEL/NIELSEN). Paratypus 1♂, from same locality, 21.7.1984 (leg. OLSEN/SKULE/STADEL).



1: *Mesocrambus candiellus* H.S. Bulgaria, Kožuch near Petritch, 3.9.1983, ♂, leg. and coll. J.GANEV.

2: *Mesocrambus canariensis* sp.n. Holotypus ♂, Canary Islands, Gran Canaria, Bco. Moya, 200 m, 7.8.1979, leg. STADEL/NIELSEN, in coll. Zool. Mus. Copenhagen. - Foto: B.ANEV, Sofia.



*Metacrambus carectellus* (ZELLER, 1847)

Greece, Lakonia, Monemvasia, 10.7.1980, 1♀ (leg. CHRISTENSEN).

*Amselia heringi* (AMSEL, 1935)

Saudi Arabia, Djidda, Northern Creek, Feb.1980, 3♀♀, (leg. SENEKA/NIELSEN).

*Chrysocrambus sardiniellus* (TURATI, 1911)

Spain, Almagen, 450 m, 22.5.1981, 1♂ (leg. NIELSEN).

*Pediasia persella* (TOLL, 1947)

Saperta, 1♂.

*Pediasia siculella* (DUPONCHEL, 1836)

Spain, Marbella, El Mirador, 20.10.1971, 1♂ (leg. OLSEN).

*Ancylolomia pectinatella* (ZELLER, 1847)

Greece, Lakonia, Monemvasia, 28.7.1979, 1♀; 5.9.1977, 1♂ and 1♀ (leg. CHRISTENSEN).

*Ancylolomia inornata* STAUDINGER, 1870

Spain, Andalusia, Sierra de Marbella, El Mirador, 700 m, 20.9.1975, 1♀ (leg. OLSEN).

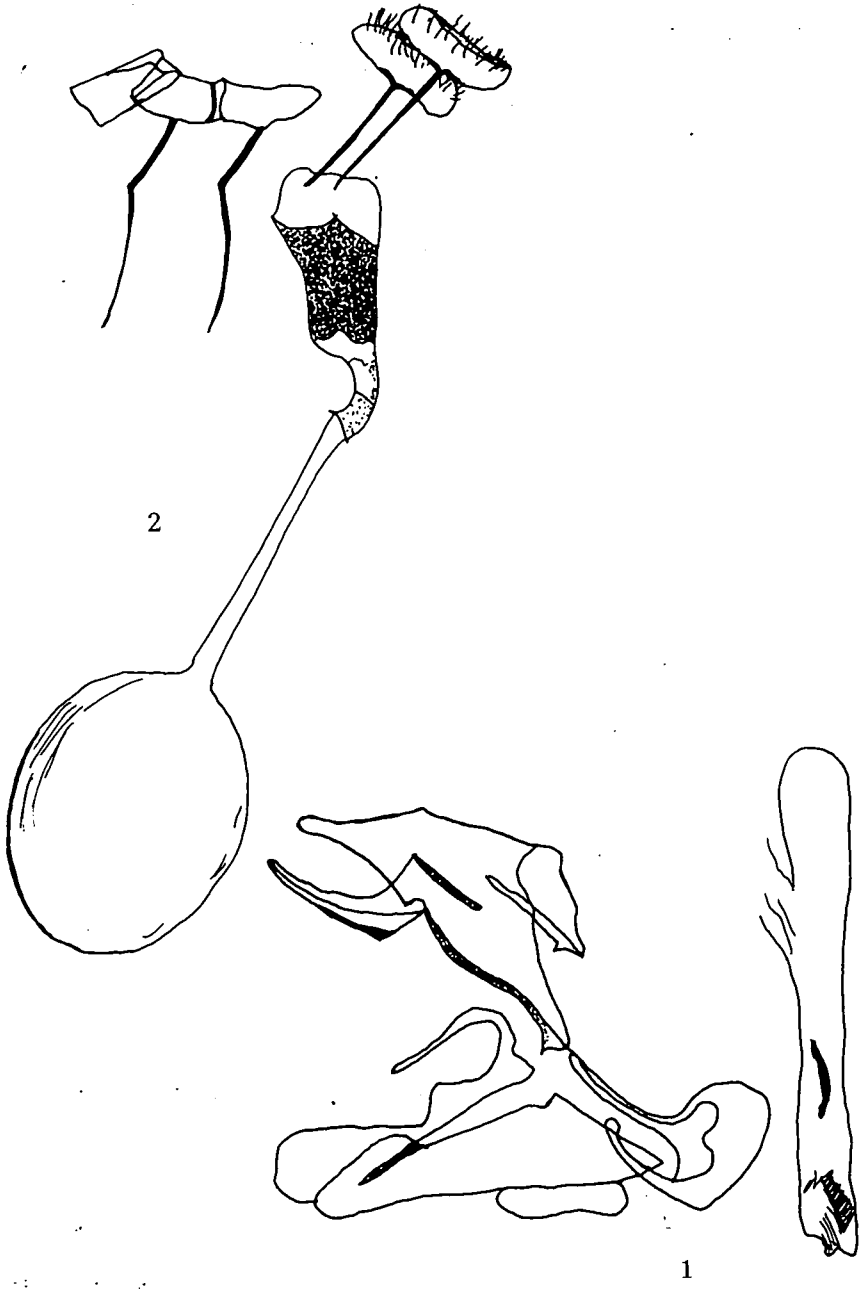
Abb. 1 - 4 (p.50-51):

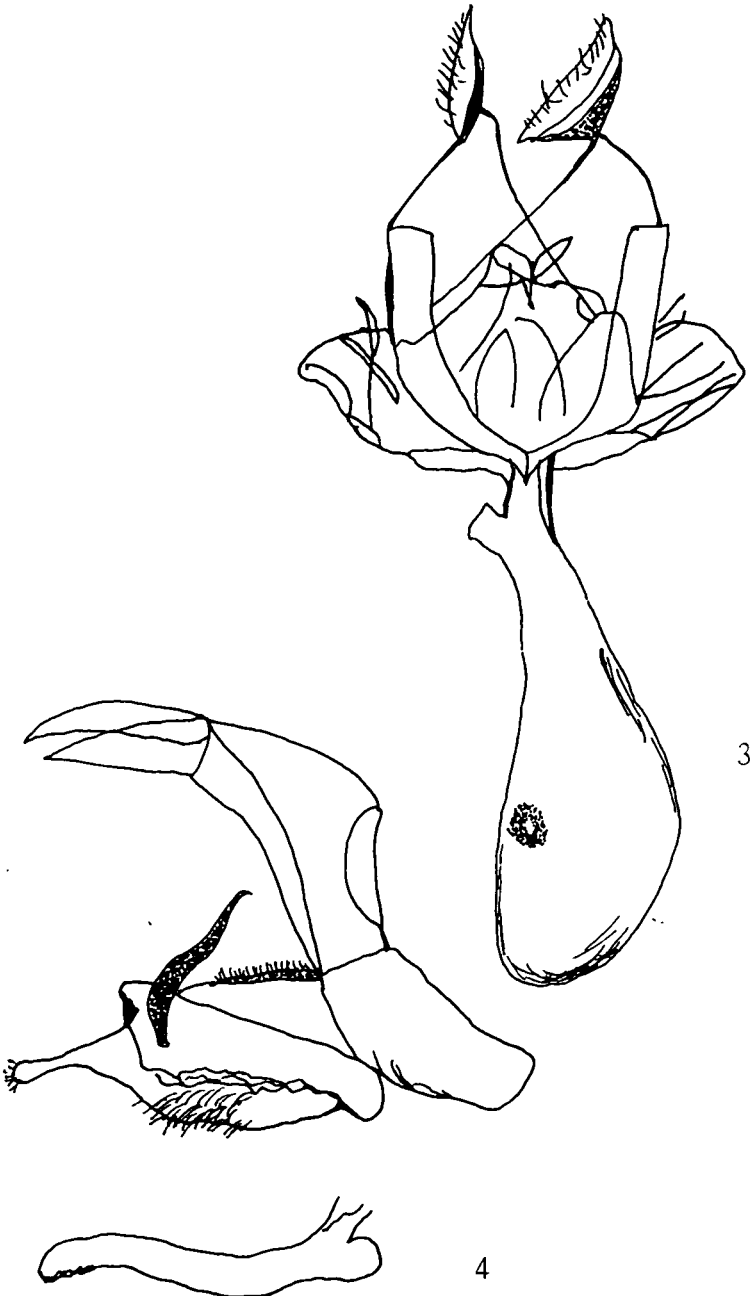
Abb.1: Genitalia ♂ of *Pareromene senekai* sp.n. Holotypus. Lybia. G.Prep.992.

Abb.2: Genitalia ♀ of *Pareromene senekai* sp.n. Paratypus. Lybia. G.Prep.995.

Abb.3: Genitalia ♀ of *Euchromius karsholti* sp.n. Holotypus. Saudi Arabia. G.Prep.968.

Abb.4: Genitalia ♂ of *Mesocrambus canariensis* sp.n. Holotypus. Canary Islands. G.Prep.1020.





## Literatur

- BLESZYNSKI, S. - 1965. Crambinae. In: Amsel/Gregor/Reisser: Microlepidoptera Palaearctica I. - Verlag G. Fromme & Co., Wien.
- BLESZYNSKI, S. - 1969. Crambinae aus der Türkei und aus Griechenland (Lep. Pyralidae). - Ent.Z., 13:25-27.
- GLASER, W. - 1974. Das Weibchen von *Euchromius gozmanyi* Bl. (Lep. Pyr. Crambinae). - Z.Arbgem.Öst.Ent., 26:2-4, 50-51.
- GÓMEZ-BUSTILLO, M. - 1984. Revision sistemática y nomenclatorial de la Fam. Crambidae (Latreille, 1809) s.str. en la Península Ibérica (Lep. Pyraloidea). - Shilap, Rvta.lepid., 12:46, 95-105.

Eingangsdatum: 28.8.1985

Author's address:

Julius GANEV  
str. Rakovski, 84  
1000 Sofia  
Bulgaria

---

Druck, Eigentümer, Herausgeber, Verleger und für den Inhalt verantwortlich: Maximilian SCHWARZ, Konsulent für Wissenschaft der O.Ö. Landesregierung, Eibenweg 6, A-4052 Ansfelden.  
Redaktion: Erich DILLER, Münchhausenstr.21, D-8000 München 60.  
Max KÜHBANDNER, Marsstraße 8, D-8011 Aschheim.  
Wolfgang SCHACHT, Scherrerstraße 8, D-8081 Schöngeising.  
Thomas WITT, Tengstraße 33, D-8000 München 40.  
Postadresse: Entomofauna, Münchhausenstr.21, D-8000 München 60.

# ZOBODAT - [www.zobodat.at](http://www.zobodat.at)

Zoologisch-Botanische Datenbank/Zoological-Botanical Database

Digitale Literatur/Digital Literature

Zeitschrift/Journal: [Entomofauna](#)

Jahr/Year: 1987

Band/Volume: [0008](#)

Autor(en)/Author(s): Ganev Julius

Artikel/Article: [On Crambidae in the collection of the Copenhagen Museum \(Lepidoptera, Pyraloidea\). 41-52](#)