

# Entomofauna

ZEITSCHRIFT FÜR ENTOMOLOGIE

---

Band 8, Heft 6

ISSN 0250-4413

Linz, 1. März 1987

---

**A new Ctenopelmatinae Genus and Species  
from Bulgaria  
(Hymenoptera, Ichneumonidae)**

**Janko Kolarov**

**Abstract**

A new *Ctenopelmatinae* genus and species from Bulgaria is described. After examination of ovipositor tip of *Seleucus cuneiformis* HOLMGREN, 1860, the genotype of *Seleucus* HOLMGREN, 1860, the genus has to be transferred from subfamily *Phrudinae* to subfamily *Ctenopelmatinae*. The genotype *Seleucus cuneiformis* HOLMGREN, 1860, is redescribed after seeing the lectotype.

**Zusammenfassung**

Es werden die Gattung *Iskarus* gen.n. und die Arten *Iskarus seleuciformis* sp.n. und *Seleucus cuneiformis* HOLMGREN, 1860, beschrieben.

After a faunistic research of Bulgarian *Ctenopelmatinae* fauna (KOLAROV, 1983), very interesting specimens were

found. Their unusual structure of abdomen resembles the description of *Seleucus cuneiformis* HOLMGREN, 1860, (*Phrudinae* auct.). After examination of the *cuneiformis* lectotype it was found, that some similarity in abdominal structure exists, but the specimens do not belong to any known species and genus. They are described below as a separate genus and species.

### *Iskarus* gen.n.

Type species: *Iskarus seleuciformis* sp.n.

Female: Front wing 6,5 mm long. Occipital carina joining hypostomal carina near base of mandible. Frons without vertical carina. Clypeus clearly separated from face, weakly convex, its front edge arcuate (Fig.1). Mandible with two equal teeth.

Praepectal carina reaching front edge of mesopleurum. Postpectal carina incomplete. Areolet absent. Radial vein arising from middle of stigma. Second recurrent vein with one bulla (Fig.2). Nervellus intercepted below middle, discoidella visible (Fig.3). Propodeum inareolated, only pleural carina and apical third of lateral carina well developed.

Abdomen very slender, all tergites elongate. First tergite strongly arcuate in lateral view (Fig.4), its spiracle before middle, glymma present. Epipleurum of second tergite separated by crease. Apical edge of third and all next tergites strongly excavated in the middle, membranous (Fig. 5). Ovipositor sheath not longer than apical depth of abdomen, its apex rounded and covered with hairs. Ovipositor thick, tapered to apex, with distinct subapical dorsal notch, curved down (Fig.6).

Front tibia with a tooth on the outer side of the apex. Tarsal claws simple.

Male unknown.

The systematic position of the genus is not clear. Such unusual character of abdomen is not known between other *Ctenopelmatinae*. If not to erect a separate tribe for it, we have to place it in *Mesoleiini*.

One species is known, from Bulgaria.

*Iskarus seleuciformis* sp.n.

Female: Front wing 6,5 mm long. Head rotunde, restricted behind (Fig.7). Distance between eye and lateral ocellus 1,8 as long as diameter of ocellus. Flagellum with 30-32 elongate segments, especially basal. First segment 4,4 as long as wide. Face convex below antennal sockets, 2,4 as wide as high. Cheek 0,25 as long as basal width of mandible. Epomia absent, notauli indistinct. Nervellus interstitial, postnervellus inclivous, parallel vein arising of its middle. First abdominal tergite not enlarged behind, with parallel lateral edges and with two axillae dorsally before spiracle. Both, first and second tergite 2,0 as long as wide. Head mat, face and thorax moderately dense and coarse punctured, abdominal tergites smooth and polished. Longer spur of hind tibia not surpassing half of basitarsus. Correlation between length of hind tarsal segments 36:21:16:10:13. The remaining as in generic description. Colour black. Basal half of mandible, palpi, hind corner of pronotum, tegula and subtegular edge yellow. Clypeus, scutellum and postscutellum yellow orange. Lateral lobe of mesonotum, mesopleurum, mesosternum, apical half of mandible except teeth, and legs red coloured. Hind tibia with pale basal half and darkened in apical one, hind tarsal segments and stigma darkbrown.

Male unknown.

Material: Holotype ♀, Bulgaria, the Rila Mountains, near artificial lake "Iskar", 900 m, 28.07.1983, leg. KOLAROV (coll.m.). Paratypes: ♀, the Rhodopi Mountains, the village of Karamantsi, 450 m, 2.06.1975, leg. KOLAROV, (coll.m.). ♀, the Rhodopi Mountains, hut Bryanovstitsa, 900 m, 14.06.1984, leg. KOLAROV, (deposited in Swedish Museum of Natural History, Stockholm).

***Seleucus* HOLMGREN, 1860**

*Seleucus* HOLMGREN, 1860. Svenska Vetensk.Akad.Handl. (N. F.), 2(8):111.

Genotype: *Seleucus cuneiformis* HOLMGREN, 1860.

TOWNES (1971) placed this genus in subfamily *Phrudinae*, without seeing ovipositor tip. I have the possibility to

see ovipositor tip of one female specimen of the original series, which is not considerably different from original description, and it is provided with distinct subapical dorsal notch. All *Phrudinae* have not such notch. Independently, that spiracle of first abdominal tergite is situated before its middle, all rest distinguishing features argue that it will be better, if genus *Seleucus* HOLMGREN, 1860, is placed in subfamily *Ctenopelmatinae*, tribe *Mesoleiini*. A single species is known and it is redescribed below.

***Seleucus cuneiformis* HOLMGREN, 1860**

Female: Head not restricted behind. Distance between eye and lateral ocellus 3,0 as long as ocellus diameter. Flagellum 26-27 segments, thinned to apex. Face more than 2 times wider as high, strongly convex below antennal sockets. Upper tooth of mandible situated slightly inwards of lower one. Notauli and epomia weak. Praepectal carina incomplete. Stigma short and wide, darkbrown, with bale base; radius arising from its middle. Nervellus weakly postfurcal, parallel vein below middle of postnervellus. Second recurrent vein with one bulla, vertical. Nervellus intercepted below middle, discoidella weak. Propodeum well areolated, costula present, basal area indistinct. Combined areola and apical area longitudinally concave, wrinkled and striated. Spiracle oval, nearer lateral carina. First tergite gradually widened backwards, its sternite begins little in front of spiracle. Second tergite 1,7 as long as wide. Apical edges of third and following tergites excavated behind. Ovipositor sheath thick, slightly beyond apex of abdomen. Ovipositor tip with distinct subapical dorsal notch. Legs slender, covered with dense bristles. Correlation between hind tarsal segments 30:14:10:6:8. The rest as generic heading (see TOWNES 1971). Head and thorax black with darkred nuance, apical half of abdomen paler. Palpi, mandible, tegula, antenna from below, and legs yellowish.

Male: I have not seen male specimens.

Material: Lectotype ♀, designated by TOWNES (Swedish

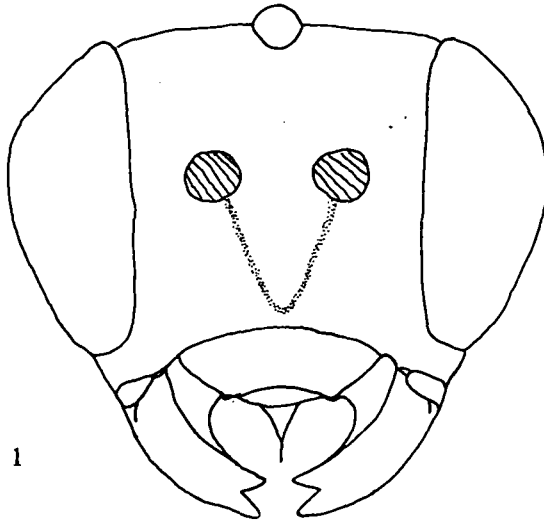
Museum of Natural History, Stockholm); 1 ♀ from the original series (in same museum).

### Acknowledgements

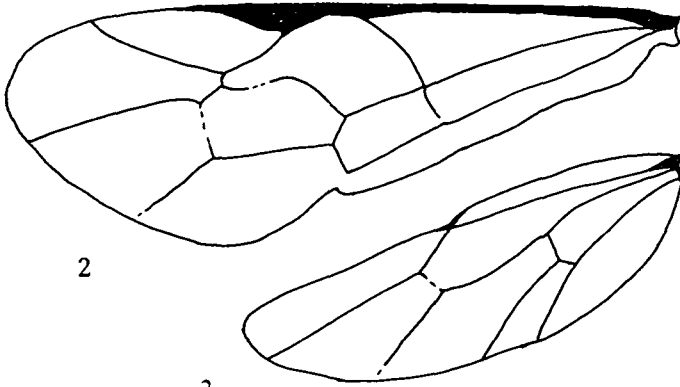
I should like to express my gratitude to Dr. T. KRONE-STEDT from Swedish Museum of Natural History for sending the lectotype and additional material of *Seleucus cuneiformis* HOLMGREN.

**Figures 1-7 (p.74-75): *Iskarus seleuciformis* sp.n.**

1) head in front view; 2) front wing; 3) hind wing; 4) first and second sbdominal tergite from the side; 5) third, fourth and fifth tergite from above; 6) apex of abdomen from the side; 7) head from above. (Magnification of wings less than other figures.)

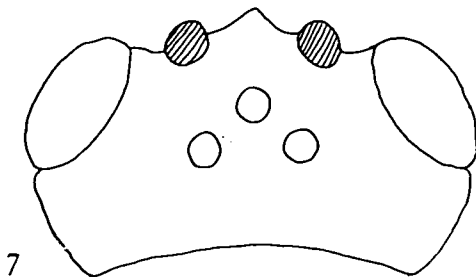
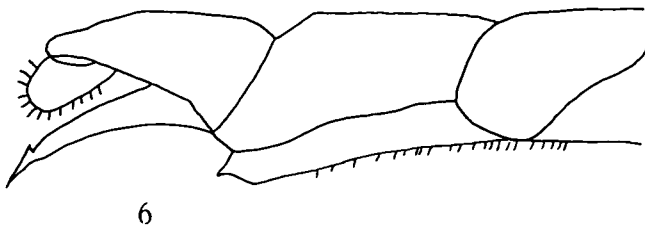
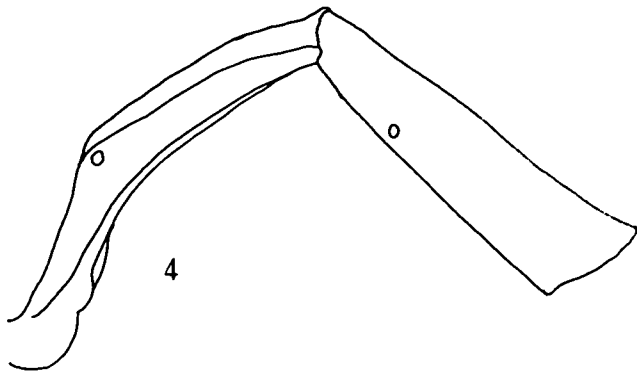


1



2

3



## Literatur

- TOWNES, H. - 1971. The genera of Ichneumonidae, part 4.  
- Mem.Amer.ent.Inst., 17:1-372.
- KOLAROV, J.A. - 1983. A Contribution to the Studies on  
Subfamily Ctenopelmatinae (Hymenoptera, Ichneumoni-  
dae) in Bulgaria. - Acta Zool.Bulg., 22:36-48. (In  
Bulgarian).

Received on 26.12.1985.

Author's address:

Janko KOLAROV  
Institute of Introduction and Plant Resources  
BG-4122 Sadovo  
Bulgaria

---

Druck, Eigentümer, Herausgeber, Verleger und für den Inhalt ver-  
antwortlich: Maximilian SCHWARZ, Konsulent für Wissenschaft  
der O.Ö. Landesregierung, Eibenweg 6, A-4052 Ansfelden.  
Redaktion: Erich DILLER, Münchhausenstr.21, D-8000 München 60.  
Max KÜHBANDNER, Marsstraße 8, D-8011 Aschheim.  
Wolfgang SCHACHT, Scherrerstraße 8, D-8081 Schöngesing.  
Thomas WITT, Tengstraße 33, D-8000 München 40.  
Postadresse: Entomofauna, Münchhausenstr.21, D-8000 München 60.



# ZOBODAT - [www.zobodat.at](http://www.zobodat.at)

Zoologisch-Botanische Datenbank/Zoological-Botanical Database

Digitale Literatur/Digital Literature

Zeitschrift/Journal: [Entomofauna](#)

Jahr/Year: 1987

Band/Volume: [0008](#)

Autor(en)/Author(s): Kolarov Janko Angelov

Artikel/Article: [A new Ctenopelmatinae Genus and species from Bulgaria \(Hymenoptera, Ichneumonidae\). 69-76](#)