



Entomofauna

ZEITSCHRIFT FÜR ENTOMOLOGIE

Band 17, Heft 28: 425-428 ISSN 0250-4413 Ansfelden, 31. Dezember 1996

A new species of *Closterocerus* WESTWOOD, 1883 from Middle Asia

(Hymenoptera, Eulophidae, Entedontinae)

Z. A. YEFREMOVA & M. V. KRISKOVICH

Abstract

Closterocerus orientalis sp. nov. is described from Bishkek, Kirgistan, Asia and its diagnostic characters are illustrated.

Zusammenfassung

Closterocerus orientalis sp. nov. wird aus Bischkek, Kirgistan, Asia beschrieben, und ihre charakteristischen Merkmale werden abgebildet.

Introduction

The genus *Closterocerus* WESTWOOD, 1883 was described for one species, *C. trifasciatus* WESTWOOD, 1883. Diagnoses and description of the genus *Closterocerus* was also made by C. HANSSON (1994). The genus *Closterocerus* was known from the Palearctic and Nearctic Regions. In the Palearctic, *C. trifasciatus* is known as a parasite of various leaf-miners of Diptera, Lepidoptera, Hymenoptera (BOUCEK & ASKEW 1968). This species is known from all zoogeographical regions. In his study on the Korean genera of Entedontinae, PAIK (1992) gave the diagnostic characters of *Closterocerus* and information about new species of this genus, but he did not name the species though he had sufficient material.

The present study deals with the specimens from Kirgistan, Middle Asia, which represent a new species close to *Closterocerus trifasciatus* WESTWOOD, 1883, and are described below. Holotype and the paratypes are deposited in the Zoological Institute of Russian Academy of Sciences in St. Petersburg.

Closterocerus orientalis sp. nov. (Figs. 1-4)

Material. Holotype: ♂, Kirgistan, Ala-Archinsk canyon, 40 km from Bishkek, 16.7.1990 (Z. YEFREMOVA); paratypes: 3 ♂♂, 1 ♀, same data as holotype.

Female. Length 1.1 - 1.2 mm (holotype 1.2 mm). Body dark greenish; scape, pedicel and funicular segments black; head and clypeus dark green, eyes dark brown, mandibles brown; trochanters, tibiae and tarsi black with reflection; wings hyaline with three dark transverse stripes; abdomen green.

Head in frontal view rounded. Width of head 1.9 times of length; POL : OOL = 2 : 1. The eyes are well developed without setae. Three ocelli in obtuse angled triangle. Antennae inserted a little above level of lower edge of eyes. Clypeus undepended. The w-carina is situated on the frontal surface of the head. Mandible 3-toothed. Malar space 3.7 times as long as length of genae. Antennal formula 1:1:1:4:1. Scape setose, 1.8 times as long as wide, reticulate; pedicel 1.2 times longer than wide; funicular segments slightly transverse. The ratio of length of clava 3:1. Antenna of female with one minute annelli. Clava with 1 segment.

Thorax longer than abdomen. Ratio between length and width of thorax = 1.8 : 1. Pronotum and scutum transverse. Notauli deep and developed. Length of scutum 2 times the width, length of scutellum more than 3 times the width. Metanotum transverse. Forewing 2 times as long as broad with three dark transverse stripes. The first stripe between parastigma and stigmal vein, second stripe at level of base of stigmal vein and apex of wing. Ratio between length of veins submarginal : stigmal : postmarginal = 19 : 28 : 6 : 4. The forewing has a line of setae from stigmal vein to apex. *C. trifasciatus* has not such a line. The forewing has two forms of setae: usual setae all over the wing and thick setae on the dark transverse stripes. Legs long, spur of middle tibia 1.7 times longer than first segment of tarsi.

Abdomen roundish, as long and as broad as thorax, cercus with 5 setae. Ovipositor reaching last tergite.

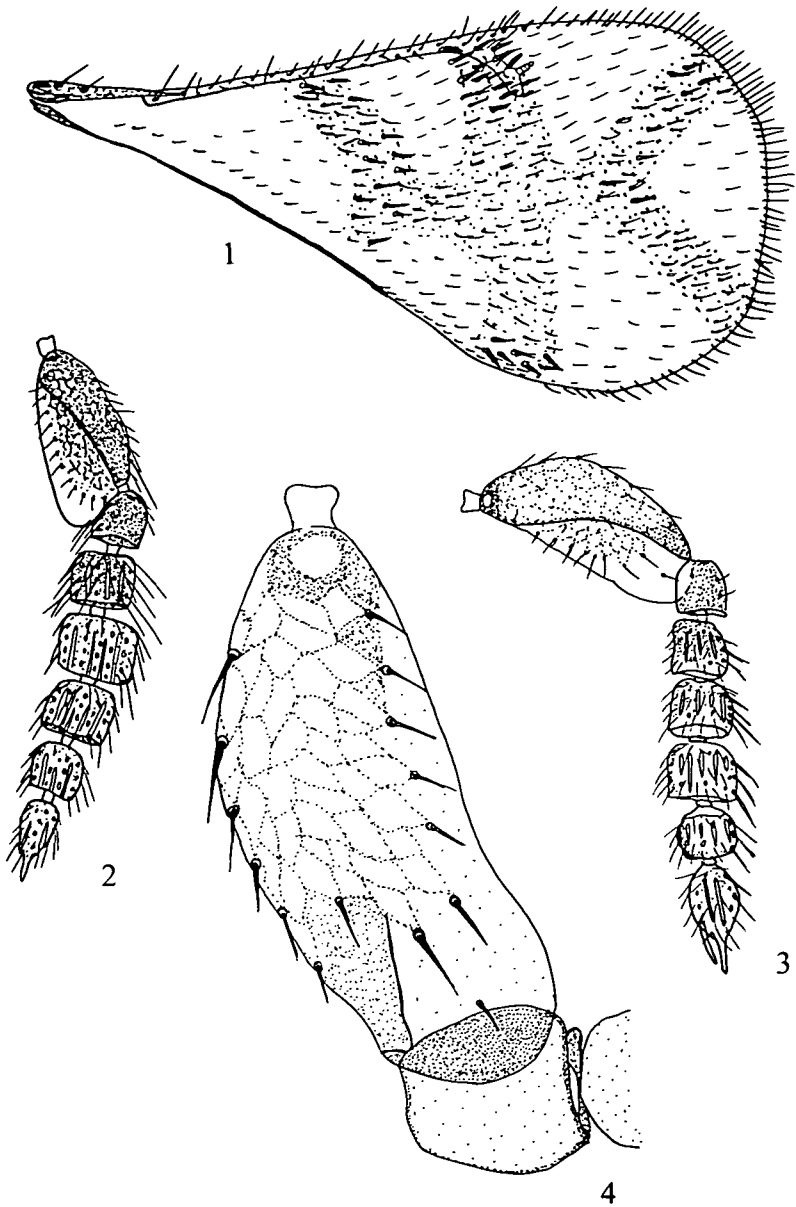
Face and front reticulate fine, clypeus and genae smooth. Scutum, metanotum and pronotum reticulate, scutellum smooth with irregular rugae mediodistally. Abdomen glance and smooth.

Male. Length 1.1 mm. Body colour as in female. Abdomen ovate. Scape 2 times as long as wide and of another shape than in female.

Distribution: Kirgistan.

Biology unknown.

Comments. The new species differs from *C. trifasciatus* in having stripes on the forewing (fig. 1) and flagellum being 1.5 times longer than scape (fig. 2) (in *trifasciatus* 2 times longer than scape) and gaster 2 times longer than wide (in *trifasciatus* gaster as long as wide).



Figs. 1-4 *Closterocerus orientalis* sp. nov.:
1) female right forewing, 2) female antenna, dorsal view,
3) male antenna, dorsal view, 4) male scapus with pedicel.

Literature

- BOUCEK, Z. & ASKEW, R.R. - 1968. Palearctic Eulophidae (excl. Tetrastichinae). - Index of Entomophagous Insects, 254 pp. Paris.
- HANSSON, C. - 1994. Re-evaluation of the genus *Closterocerus* WESTWOOD (Hymenoptera: Eulophidae), with a revision of the Nearctic species. - Ent. scand. 25: 1-25.
- PAIK, J.-C. - 1992. Notes on some Eulophinae (Hymenoptera: Eulophidae) in Korea II. - Insecta Koreana 9: 34-51.
- TRJAPITZIN, V.A. - 1978. Family Eulophidae. A key of insects of european part of the USSR, 3 (2) Hymenoptera: 381-430.

Author's address:

Dr. Z. A. YEFREMOVA
Department of Zoology
Pedagogical University
Ulyanovsk
432700 Russia

Druck, Eigentümer, Herausgeber, Verleger und für den Inhalt verantwortlich:
Maximilian SCHWARZ, Konsulent für Wissenschaft der O.Ö. Landesregierung,
Eibenweg 6, A-4052 Ansfelden
Redaktion: Erich DILLER, ZSM, Münchhausenstraße 21, D-81247 München, Tel. (089) 8107-159
Max KÜHBANDNER, Marsstraße 8, D-85609 Aschheim, Tel. (089) 8107-154
Wolfgang SCHACHT, Scherrerstraße 8, D-82296 Schöngeising, Tel. (089) 8107-146
Erika SCHARNHOP, Himbeerschlag 2, D-80935 München, Tel. (089) 8107-102
Johannes SCHUBERTH, Bauschingerstr. 7, D-80997 München, Tel. (089) 8107-160
Emma SCHWARZ, Eibenweg 6, A-4052 Ansfelden
Thomas WITT, Tengstraße 33, D-80796 München
Postadresse: Entomofauna (ZSM), Münchhausenstr. 21, D-81247 München;
Tel. (089) 8107-0, Fax 8107-300

ZOBODAT - www.zobodat.at

Zoologisch-Botanische Datenbank/Zoological-Botanical Database

Digitale Literatur/Digital Literature

Zeitschrift/Journal: [Entomofauna](#)

Jahr/Year: 1996

Band/Volume: [0017](#)

Autor(en)/Author(s): Yefremova Zoya A., Kriskovich M. V.

Artikel/Article: [A new species of *Closterocerus* WESTWOOD, 1883 from Middle Asia \(Hymenoptera, Eulophidae, Entedontinae\). 425-428](#)