



Entomofauna

ZEITSCHRIFT FÜR ENTOMOLOGIE

Band 27, Heft 15: 189-192

ISSN 0250-4413

Ansfelden, 30. April 2006

A new species of Subgenus *Xorides* from China (Hymenoptera, Ichneumonidae, Xoridinae)

Mao-Ling SHENG & Shen-Ying JIANG

Abstract

A new species of Ichneumonidae (Hymenoptera) is described from China: *Xorides (Xorides) deplanatus* SHENG **sp. nov.** The specimen was collected in Hunan Province at the border between Palaearctic and Oriental Region in China. A key to the species of the subgenus known from the Oriental Part of China is provided.

Key words: Hymenoptera, Ichneumonidae, *Xorides*, new species, China.

Zusammenfassung

Es wird eine neue Ichneumoniden-Art (Hymenoptera) aus China beschrieben: *Xorides (Xorides) deplanatus* SHENG **sp. nov.** Das Tier wurde in der Provinz Hunan, an der Grenze zwischen paläarktischer und orientalischer Region in China, gesammelt. Ein Schlüssel für die orientalischen Arten der Untergattung in China wird präsentiert.

Introduction

The subgenus *Xorides* LATREILLE, 1809 belongs to the genus *Xorides* LATREILLE, 1809 of the subfamily Xoridinae in Ichneumonidae with 77 species, of which 10 are distributed in China. 2 of them are known from the Oriental Part of China: *X. (Xorides) asperus* WANG & GUPTA, 1995 and *X. (Xorides) centromaculatus* CUSHMAN, 1933. In this study one new species belonging to the Oriental fauna is described. The Holotype is deposited in the collections of the General Station of Forest Pest Management, State Forestry Administration, Shenyang, Liaoning, China.

***Xorides (Xorides) deplanatus* SHENG **sp. nov.** (Figs. 1-3)**

♀. Body 19.5 mm long. Fore wing 14.5 mm long.

Face 2 times wider than long, strongly convex, with dense short wrinkles, mainly punctured centrally. Clypeal suture distinct and deep, distinctly located under line between lower margins of eyes. Basal margin of clypeus with fine punctures, subbasal portion transversely convex, like a ridge, apical portion weakly concave. Apical margin of labrum with dense brown hairs. Mandible with one chisel-shaped tooth. Malar space about 0.8 times as long as basal width of mandible. subocular sulcus distinct. Along subocular sulcus with short transverse wrinkles. Temple with dense longitudinal wrinkles, front and hind margin with fine punctures. Median portion of vertex and stemmaticum with distinct punctures, lateral and hind portion with transverse wrinkles, punctured weakly between wrinkles. Postocellar line 1.2 times as long as ocular-ocellar line. Frons with dense transverse wrinkles, punctured between wrinkles. Flagellum with 27 segments, each of them longer than its own diameter; reciprocal segment 2 is the shortest and 1.3 times longer than its diameter; outer sides of segments 22-25 with peglike bristles. Occipital carina absent above, present laterally. Front margin of pronotum smooth, lateral concave with transverse wrinkles, hind portion with oblique longitudinal wrinkles. Epomia strong.

Mesoscutum with dense punctures, hind portion with dense longitudinal wrinkles. In the front section of notaulus with short transverse wrinkles, in the hind section with oblique longitudinal wrinkles. Parapsidal furrow distinct. Scutoscutellar groove very deep, with longitudinal wrinkles. Scutellum convex, with distinct punctures. Front 2/3 of post-scutellum very deeply concave; hind 1/3 like a transverse flake, its lateral side convex. Mesopleurum with dense punctures. Speculum large. Metapleurum strongly coarse, with irregular and unclear wrinkles. Submetapleural carina complete and strong.

Wing brownish hyaline. Nervulus slightly distad of basal vein. Intercubitus very short, about 1/6 times as long as the distance between it and second recurrent vein. Postnervulus intercepted at lower 0.38. Nervellus intercepted approximately at the middle.

Legs strong. Claws very small. Fore and middle tibiae very thick, nearly columnar. Front sides of front tibiae with many small thorns. Middle coxae columnar, 3.3 times as long as its median diameter.

Propodeum weakly rough; basal area and areola with indistinct, short and transverse wrinkles; first lateral area with punctures; second lateral area with transverse wrinkles; lateral carinae of basal area parallel; areola confluent with basal area and separated from petiolar area by a distinct carina; apical area vertical. Propodeal apophysis stretching backward, reaching beyond the end of propodeum.

First tergite of abdomen straight, 3.1 times as long as its apical width, with slight rough surface, unclear transverse lines, and a weak oblique concave at lateral margin near hind 0.3; without median dorsal carina; apical 1/3 of dorsolateral carina present weakly; spiracle round, very small and convex. Tergite 2 about 1.3 times as long as its apical width, rough, with basal lateral groove, a oblique longitudinal groove from its lateral median margin forward center of hind margin. Tergite 3 about 1.2 times as long as its apical width, with unclear short transverse lines and distinct thyridium near basal margin. Last tergite long, horn-shaped. Ovipositor sheath 22.5 mm long. Ovipositor thin, apical portion depressed, apical portion of lower valve with distinct oblique ridges, basal 3 ridges very strong.

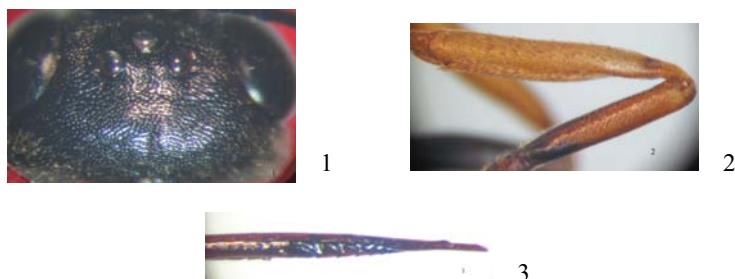
Black. Clypeus and basal portion of mandibles reddish brown. Flagellum 9-13, a small fleck on outside of basal portion of tibia and base of fore wing white. Front portion of mesoscutum slightly and unclearly reddish. Ventral sides of second trochanters of front and middle legs, front femur except black base, apical portion of middle femur, all tibiae,

front and middle tarsi except segment 5, brown. Segments 1-4 of hind tarsi yellowish white. Hind margins of tergite 3-6 very narrowly white.

Holotype ♀: Yunshan, 1100 m, Wugang, Hunan Province, 4.VI.2003, Ji-Gang JIANG.

Etymology: Specific name derived from the depressed apical portion of ovipositor.

Diagnosis. This new species is similar to *X. (X.) minimus* GUPTA & CHANTRA, 1974, but can be distinguished from the latter by nervellus intercepted approximately at the middle, ovipositor sheath 1.15 times longer than body, frons with dense transverse wrinkles, face and orbits entirely black.



Figs. 1-3 *Xorides (Xorides) deplanatus* SHENG sp. nov.: 1 vertex; 2 front side of front femur and tibia; 3 apical portion of ovipositor, lateral view.

Key to species of subgenus *Xorides* known in Oriental Part of China

- 1 Clypeus with fine transverse striations. Apex of middle lobe and lateral lobes of Mesoscutum with indistinct punctures *X. (X.) asperus* WANG & GUPTA
- Clypeus without striations. Mesoscutum with distinct punctures 2
- 2 Frons with sparse and fine punctures. Occipital carina complete above. Ovipositor sheath much shorter than body. Body with profuse yellow markings *X. (X.) centromaculatus* CUSHMAN
- Frons with dense transverse wrinkles. Occipital carina broadly interrupted above medially. Ovipositor sheath distinctly longer than body. Body black *X. (X.) deplanatus* SHENG sp. nov.

Acknowledgements

We are deeply grateful to Dr. K. SCHÖNITZER, Zoologische Staatssammlung München, Germany, Dr. Jacek HILSZCZANSKI, Department of Forest Protection, Forest Research Institute, Warsaw, Poland, and Dr. Rikio MATSUMOTO, Osaka Museum of Natural History, Osaka, Japan, for their kindness in offering valuable material and lending specimens. Financial support from the National Natural Science Foundation of China (NSFC, No. 30471397) is thankfully acknowledged.

References

- AUBERT, J.F. 1969: Les Ichneumonides ouest-paléarctiques et leurs hotes 1. Pimplinae, Xoridinae, Acaenitinae. - Laboratoire d'Evolution des Etres Organises, 302 pp., Paris.
- CLÉMENT, E. 1938: Opuscula Hymenopterologica IV. Die paläarktischen Arten der Pimplintribus Ischnocerini, Odontomerini, Neoxoridini und Xylomini (Xoridini SCHM.).

- Festschrift 60. Geburtst. Prof. Embrik STRAND 4: 502-569.
- CUSHMAN, R.A. 1933: H. Sauter's Formosa-collection: Subfamily Ichneumoninae (Pimplinae of Ashmead). - *Insecta Matsumurana* 8: 1-50.
- GAULD, I.D. & FITTON, M.G. 1981: Keys to the British xoridine parasitoids of wood-boring beetles (Hymenoptera: Ichneumonidae). - *Entomologist's Gazette* 32: 259-267.
- GUPTA, V.K. & CHANDRA, G. 1974: Oriental species of *Xorides* (*Xorides*) (Hymenoptera: Ichneumonidae). - *Oriental Insects* 8 (4): 395-411.
- GUPTA, V.K. 1987: The Ichneumonidae of the Indo-Australian area (Hymenoptera). - *Memoirs of the American Entomological Institute* 41 (1): 1-597.
- KASPARYAN, D.R. 1981: A guide to the insects of the European part of the USSR. Hymenoptera, Ichneumonidae. 3 Subfamily Labeninae (Labiinae). 4 Subfamily Adelognathinae. 5 Subfamily Xoridinae. 6 Subfamily Agriotypinae. - *Opredeliteli Faune SSSR* 129: 166-175.
- LIU, T. & SHENG, M.-L. 1998: Studies on the genus *Xorides* (*Xorides*) from Northeast China. - *Entomologia Sinica* 5 (1): 35-41.
- TOWNES, H.K. 1970 (1969): The genera of Ichneumonidae, 1. - *Memoirs of the American Entomological Institute* 11: 1-300.
- UCHIDA, T. 1928: Dritter Beitrag zur Ichneumoniden-Fauna Japans. - *Journal of the Faculty of Agriculture, Hokkaido University* 25: 1-115.
- UCHIDA, T. 1932: Beiträge zur Kenntnis der japanischen Ichneumoniden. - *Insecta Matsumurana* 6: 145-168.
- WANG, S.F. & GUPTA, V.K. 1995: Studies on the Xoridine Ichneumonids of China (Hymenoptera: Ichneumonidae: Xoridinae). - *Oriental Insects* 29: 1-21.

Addresses of authors:

Mao-Ling SHENG
General Station of Forest Pest Management
State Forestry Administration
58 Huanghe North Street
Shenyang 110034
China
E-mail: shengmaoling@163.com

Shen-Ying Jiang
Foreign Language Department
Shenyang Institute of
Aeronautical Engineering
Shenyang 110034
China

Druck, Eigentümer, Herausgeber, Verleger und für den Inhalt verantwortlich:
Maximilian SCHWARZ, Konsulent für Wissenschaft der O.Ö. Landesregierung,
Eibenweg 6, A-4052 Ansfelden, E-Mail: maxschwarz@inode.at

Redaktion: Erich DILLER (ZSM), Münchhausenstrasse 21, D-81247 München, Tel.(089)8107-251
Fritz GUSENLEITNER, Lungitzerstrasse 51, A-4222 St. Georgen a.d. Gusen
Wolfgang SCHACHT, Scherrerstrasse 8, D-82296 Schöngeising, Tel. (089) 8107-302
Erika SCHARNHOP, Himbeerschlag 2, D-80935 München, Tel. (089) 8107-102
Emma SCHWARZ, Eibenweg 6, A-4052 Ansfelden
Dr. Wolfgang SPEIDEL, Museum Witt, Tengstrasse 33, D-80796 München
Thomas WITT, Tengstrasse 33, D-80796 München, E-Mail: thomas@witt-thomas.com
Postadresse: Entomofauna (ZSM), Münchhausenstrasse 21, D-81247 München,
E-Mail: erich.diller@zsm.mwn.de oder: wolfgang.schacht@zsm.mwn.de

ZOBODAT - www.zobodat.at

Zoologisch-Botanische Datenbank/Zoological-Botanical Database

Digitale Literatur/Digital Literature

Zeitschrift/Journal: [Entomofauna](#)

Jahr/Year: 2006

Band/Volume: [0027](#)

Autor(en)/Author(s): Sheng Mao-Ling, Jiang Shen-Ying

Artikel/Article: [A new species of Subgenus Xorides from China \(Hymenoptera, Ichneumonidae, Xoridinae\) 189-192](#)