



Entomofauna

ZEITSCHRIFT FÜR ENTOMOLOGIE

Band 35, Heft 20: 433-448

ISSN 0250-4413

Ansfelden, 2. Januar 2014

**A contribution to the Swedish fauna of Ichneumoninae
(Hymenoptera, Ichneumonidae), with descriptions of the female of
Cratichneumon armillatops RASNITSYN 1981 and the male of
Aoplus biannulatorius (THUNBERG 1824)**

Matthias RIEDEL & Pelle MAGNUSSON

Abstract

For this publication we studied part of the Swedish material of Ichneumoninae (Hymenoptera, Ichneumonidae) that has been collected over the last years for the Swedish Malaise Trap Project (SMTP). 43 species of Ichneumoninae are reported as new for the fauna of Sweden, 14 of them have not been found in Scandinavia so far. One species, *Ichneumon magistratus* HILPERT 1992 is reported from the Western Palearctic region for the first time.

We also give descriptions of the hitherto unknown female of *Cratichneumon armillatops* RASNITSYN 1981 and male of *Aoplus biannulatorius* (THUNBERG 1824).

Zusammenfassung

Für diese Studie haben wir die schwedischen Ichneumoninae (Hymenoptera, Ichneumonidae) untersucht, die im Rahmen des "Swedish Malaise Trap Project"

(SMTP) in den letzten Jahren gesammelt wurden. 43 Arten wurden erstmalig in Schweden gefunden, 14 dieser Arten sind neu für die Fauna Skandinaviens. Die Art *Ichneumon magistratus* HILPERT 1992 konnte erstmals für die westpaläarktische Fauna nachgewiesen werden.

In unserem Material fanden sich auch das bisher unbekannte Weibchen von *Cratichneumon armillatops* RASNITSYN 1981 und das unbekannte Männchen von *Aoplus biannulatorius* (THUNBERG 1824), welche hier beschrieben werden.

Introduction

The Hymenopteran family Ichneumonidae is very species-rich and one of the largest and most diverse insect families of the world. Although the biodiversity of Ichneumonidae is better known in Europe than in most other faunistic areas, the distribution and biology of many species is still unclear. In Sweden, the Ichneumonid fauna has been studied by eminent Hymenopterologists such as C.P. THUNBERG, A.E. HOLMGREN, C.G. THOMSON, and A. ROMAN in the past. Therefore, the inventory of the Swedish species is quite well known.

The subfamily Ichneumoninae, one of the largest ones of Ichneumonidae, is well represented in Sweden and contains many large and colorful species. About 416 different Ichneumoninae have been reported from Sweden so far (YU et al. 2012). However, a recent publication (KOPONEN et al. 2009) accounts 453 species of Ichneumoninae for Finland. Therefore, we estimate that a similar or even larger number of species could be expected for Sweden.

In the last years, the many contributors of the Swedish Malaise Trap Project (SMTP) have accumulated a large amount of material from many sites all over Sweden. In this paper, we give a first account of Ichneumoninae findings from this project. We have excluded the tribe Phaeogenini from this list since the material of this tribe has not been studied by us yet.

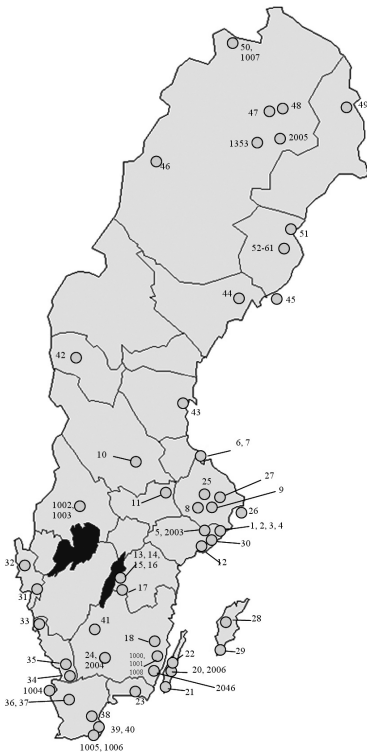


Fig. 1: Distribution of the studied Malaise traps in Sweden.

Methods

The material was preserved in alcohol and dried and pinned for the present study, but some of better known species have been retained in alcohol for further studies in the future.

The determinations mainly base on the determination key given by RASNITSYN (1981) that covers most species found in Sweden so far. The distributional records below we took from the catalogue of YU et al. (2012) but mention only the Scandinavian countries.

The main material is actually housed in the Station Linné on Öland, some voucher specimens are kept in the personal collection of the first author.

Locations of the traps mentioned in this publication (see fig. 1)

Trap 1: Sö, Tyresö kommun, Åva, Spirudden, mixed coastal oak forest, N 59°10.313' E 18°22.197'.

Trap 2: Sö, Haninge kommun, Tyresta, Ungfars mosse/bog, N 59°10.698' E 18°13.766'.

Trap 3: Sö, Haninge kommun, Tyresta, Urskogesslingan, flat-rock and pine forest, N 59°10.608' E 18°14.816'.

Trap 4: Sö, Haninge kommun, Tyresta, Urskogesslingan, Norway spruce wood w. blueberry, N 59°10.554' E 18°14.855'.

Trap 5: Sö, Huddinge kommun, Sofielunds återvinningsanläggning, pine forest with garbage, N 59°10.592' E 17°59.631'.

Trap 6: Up, Älvkarleby kommun, Marma skjutfält, dry meadow w. birch, N 60°31.456' E 17°27.089'.

Trap 7: Up, Älvkarleby kommun, Båfors. pine forest w. blueberry, N 60°27.639' E 17°19.069'.

Trap 9: Up, Knivsta kommun, Rickebasta alsumpskog, alder swamp wood, N 59° 44.061' E 17° 43.225'.

Trap 10: Sr, Sätters kommun, Säterdalen, Näsåkerspussen, alder wood ravine, N 60°22' E 17°43'.

Trap 13: Ög, Ödeshögs kommun, Omberg, Stocklycke äng. lime meadow, N 58°18.452' E 14°37.859'.

Trap 15: Ög, Ödeshögs, Omberg, Storpissan, old Norway spruce wood, N 58°20.095' E 14°39.300'.

Trap 16: Ög, Ödeshögs kommun, Omberg, Bokskogsreservatet. Beech forest N 58°17.831' E 14°38.089'.

Trap 17: Sm, Gränna kommun, Lönnemålen, next to old cellar in Norway spruce forest w. big harvested ashes, N 58°02.935' E 14°34.382'.

Trap 18: Sm, Högsby kommun, Hornsö kronopark, birch fen, N 57°00.393' E 16°06.561'.

Trap 20: Öl, Mörbylånga kommun, Södra lunden (Ottenby), military radar station, nemoral grove, N56°13.161' E 16°25.341'.

Trap 22: Öl, Mörbylånga, Gamla Skogsby (Kakstad), Adiversitetsängen@, meadow with bushes, N 56°37.002' E 16°30.457'.

- Trap 24:** Sm, Älmhults kommun, Stenbrohult, Djäknabygds bokbacke, heath with old beeches, N 56°36.548'E14°11.583'.
- Trap 25:** Up, Uppsala kommun, Fiby urskog, Trefaldighets källa, mixed deciduous forest along brook, N 59°53.004' E 17°11.583'.
- Trap 26:** Up, Norrtälje kommun, Svartöga, Matkrok, maritime deciduous wood, N 59°34.167' E 19°03.180'.
- Trap 27:** Up, Uppsala kommun, Ekdalens naturreservat, tall herbs and young trees mixed with old oaks, N 59°58.291' E 18°21.299'.
- Trap 28:** Go, Gotlands kommun, Roleks, grazed calcareous pine forest, N57°32.207' E18°20.273'.
- Trap 29:** Go, Gotlands kommun, Rembs, lichen pine forest, N 56°56.036' E 18°16.127'.
- Trap 30:** Sö, Södertälje kommun, Tullgarns näs, Rävshalaviken, mixed forest next to pasture, N 58°57.313' E 17°36.453'.
- Trap 31:** Bo, Stenungsunds kommun, Kolhättan (Ödsmål), Hällsberget, broad-leaved deciduous forest, N 58°08.456' E 11°51.372'.
- Trap 32:** Bo, Tanums kommun, Hamburgsund, Stora Snixholmen, semi-exposed coastal flat-rock, N 58°33.865' E 11°15.104'.
- Trap 33:** Ha, Kundsbacka kommun, Särö Västerskog, oak and pine wood, N 57°30.312' E 11°55.544'.
- Trap 35:** Ha, Halmstad kommun, Gårdshult, Buskasticket, moist hay meadow, N56°41.693'E13°09.030'.
- Trap 36:** Sk, Klippans kommun, Skäralid, northern Lierna, Deschampsia flexuosa beech forest, N56°01.582'E13°13.382'.
- Trap 37:** Sk, Klippans kommun, Skäralid, valley below northern Lierna, rich beech forest, N 56°01.633'E 13°13.406'.
- Trap 38:** Sk, Tomelilla kommun, Drakamöllan, Agrostis capillaris heath, N 55°45.706'E 14°07.068'.
- Trap 39:** Sk, Simrishamns kommun, Stenshuvuds nationalpark, broad-leaved deciduous forest, N 55°39.618'E14°16.532'.
- Trap 41:** Sm, Gnosjö kommun, Store mosse, Kittlakull, bog, N 57°17.234' E 13°55.148'.
- Trap 43:** Hs, Hudiksvalls kommun, Stentsjön-Lomtjärn, Stensjön, marsh pine wood close to bog, N 62° 08.420' E 16° 17.166'.
- Trap 44:** Ån, Önsköldsviks kommun, Skuleskogen, Långgrå, brook ravine in mixed forest, N 63°05.323' E 18°29.903'.
- Trap 49:** Bd, Pajala kommun, Vasikkavuoma, mowable bog, N 67° 13.778'E 22.11.200'.
- Trap 50:** Bd, Kiruna kommun, Abisko nationalpark, dry alpine birch wood, N68°21.232' E18°46.929'.
- Trap 54:** Vb, Vindelns kommun, Kulbäcken meadow, birch wood on fine alluvial sediments, N 64°11.413' E 19°36.342'.
- Trap 55:** Vb, Vindelns kommun, Kulbäckslidens försökspark, Granliden, 80+ yr old spruce forest, N 64°11.554' E 19°19.017'.

- Trap 57:** Vb, Vindeln kommun, Kulbäckslidens försökspark, 15 yr spruce plantation with blueberry, N 64°09.270' E 19°35.591'.
- Trap 58:** Vb, Vindeln kommun, Kulbäckslidens försökspark, 4050 yr blue-berry pine forest, N 64°10-716'E19°192'.
- Trap 1000:** Sm, Nybro kommun, Bäckebo, Grytsjöns naturreservat, old aspen forest in boulder terrain, N 63° 10.596' E 15° 18.027'.
- Trap 1001:** Sm, Nybro kommun, Bäckebo, Grytsjöns naturreservat, old moisty haymaking meadow in forest edge, N 62° 11.678' E 15° 17.066'.
- Trap 1002:** Vr, Munkfors kommun, Ransäter, Rudstorp, sandy railway embankment through pasture-land, N 66°36.454' E 13°69.030'.
- Trap 1003:** Vr, Munkfors kommun, Ransäter, Ransbergs herrgård, old mixed deciduous forest in stream ravine, N 66°32.516' E 13°65.816'.
- Trap 1005:** Sk, Ystads kommun, Sandhammaren strand, Järahusen, border between forest and sandhill dunes, N61°42.074'E13°98.890'.
- Trap 1008:** Sm, Nybro kommun, Alsterbro/Alsterån, mixed forest, N 63°12.220' E 15°00.6997'.
- Trap 2003:** Sö, Huddinge kommun, Sofielunds kadaverdeponi, cadaver dump, N 59°10.592' E 17°59.631'.
- Trap 2006:** Öl, Mörbylånga kommun, Ölands Skogsby, Ecological Research Station ESÖ Garden, N 56°37,786'E 16°29,5121'.
- Trap 2046:** Sm, Torsås kommun, Söderåkra, Påboda, garden, N62°5636 E15°1637.

List of species new for the fauna of Sweden

Tribe *Platylabini*

Apaeleticus bellicosus WESMAEL 1845

Material: Trap 27: 1♀ 6.ix.-20.ix.2004, trap 31: 1♀ 11.viii.-22.viii.2004, trap 1002: 3♀ 12.viii.-24.viii.2005.

Distribution: Western Palearctic region, known from Finland.

Cyclolabus alpinus (HABERMEHL 1917)

Material: Trap 47: 1♀ 15.vii.-16.viii.2005.

Distribution: Western Palearctic region, known from Finland.

Platylabus baueri RIEDEL 2008

Material: Trap 29: 1♂ 21.vi.-12.vii.2005, trap 39: 1♀ 23.ix.-13.x.2003, trap 2003: 1♀ 08.ix.-10.x.2006.

Distribution: Western Palearctic region, known from Finland and Norway.

***Platylabus fugator* (GRAVENHORST 1807)**

M a t e r i a l : Trap 1000: 1♂ 27.vi.-2.vii.2005.

D i s t r i b u t i o n : Known from Central Europe, new for Scandinavia.

***Platylabus minor* RIEDEL 2008**

M a t e r i a l : Trap 22: 1♀ 7.viii.-18.viii.2003.

D i s t r i b u t i o n : Central Europe and Finland.

***Platylabus pseudopumilio* RIEDEL 2008**

M a t e r i a l : Trap 9: 1♂ 06.vii.-19.vii.2003, trap 20: 1♂ 20.vii.-12.viii.2003, trap 26: 1♂ 27.v.-26.vi.2005, trap 57: 1♀ 20.viii.-3.ix.2004, trap 1000: 1♀ and 1♂ 12.vii.-18.vii.2005, 1♂ 18.vii.-2.viii.2005.

D i s t r i b u t i o n : Western Palearctic region, known from Finland.

***Platylabus sternoleucus* WESMAEL 1853**

M a t e r i a l : Trap 4: 1♀ 22.vii.-22.viii.2005.

D i s t r i b u t i o n : Europe (RIEDEL 2008), known from Finland.

***Pristicerops laetepictus* (COSTA 1863)**

M a t e r i a l : Trap 35: 1♀ 25.v.-8.vi.2005.

D i s t r i b u t i o n : Known from Central Europe, new for Scandinavia.

Tribe I c h n e u m o n i n i

***Achais oratorius oratorius* (FABRICIUS 1793)**

M a t e r i a l : Trap 4: 4♂♂ 21.vii.-4.viii.2003, 1♀ 9.ix.-25.ix.2003, trap 5: 1♀ 1.iv.-16.iv.2004, trap 7: 1♂ 3.vii.-29.vii.2003, trap 10: 1♀ 15.iv.-13.v.2004, trap 15: 3♂♂ 19.vii.-2.viii.2005, 1♂ 2.viii.-23.viii.2005, trap 16: 1♂ 5.vii.-19.vii.2005, trap 25: 5♂♂ 29.vi.-22.vii.2003, 1♂ 22.vii.-12.viii.2003, trap 37: 2♂♂ 6.viii.-6.ix.2004, trap 44: 1♂ 17.vii.-29.vii.2003, 2♂♂ 29.vii.-18.viii.2003, 4♂♂ 9.viii.-23.viii.2004, trap 1000: 4♂♂ 2.vii.-12.vii.2005, 1♂ 12.vii.-18.vii.2005, 2♂♂ 18.vii.-2.viii.2005, trap 1001: 1♂ 12.vii.-18.vii.2005, 1♂ 18.vii.-25.vii.2005, 2♀♀ 27.iv.-18.v.2006, 2♀♀ 18.v.-15.vi.2006, trap 1003: 7♂♂ 10.vii.-24.vii.2005, trap 1008: 1♂ 20.vii.-25.vii.2005.

D i s t r i b u t i o n : Palearctic region, known from Finland, Norway, and Denmark.

***Aoplus defraudator* (WESMAEL 1845)**

M a t e r i a l : Trap 3: 1♂ 11.viii.-7.ix.2004, trap 4: 1♂ 12.vii.-4.viii.2003, 1♂ 21.vii.-4.viii.2003, 1♀ 21.vi.-20.vii.2004, 1♂ 20.vii.-11.viii.2004, trap 9: 1♂ 24.vi.-16.vii.2005, trap 26: 2♂♂ 26.viii.-10.x.2004, trap 38: 1♀ 7.viii.-19.viii.2003, trap 55: 1♂ 1.ix.-22.ix.2003, trap 1001: 1♀ 4.vi.-19.vi.2005.

D i s t r i b u t i o n : Palearctic region, known from Norway and Finland.

***Aoplus lugubris* (BERTHOUMIEU 1896)**

M a t e r i a l : Trap 1008: 1♂ 16-22.vi.2006.

D i s t r i b u t i o n : Western Palearctic region, new for Scandinavia.

***Aoplus theresae* (BERTHOUMIEU 1896)**

M a t e r i a l : Trap 24: 3♀♀ 30.iv.-31.v.2005.

D i s t r i b u t i o n : Western Palearctic region, new for Scandinavia.

***Barichneumon albicaudatus* (FONSCOLOMBE 1847)**

M a t e r i a l : Trap 2: 1♂ 20.vii.-11.viii.2004.

D i s t r i b u t i o n : Central and Southern Europe, new for Scandinavia.

***Barichneumon bilunulatus* (GRAVENHORST 1829)**

M a t e r i a l : Trap 28: 5♂♂ 8.vii.-18.vii.2003.

D i s t r i b u t i o n : Palearctic region, known from Finland.

***Barichneumon chionomus* (WESMAEL 1845)**

M a t e r i a l : Trap 32: 1♀ 3.x.-28.x.2005.

D i s t r i b u t i o n : Palearctic region, known from Norway and Finland.

***Barichneumon nubilis* (BRISCHKE 1891)**

M a t e r i a l : Trap 1005, 1♀ coll 1412.

D i s t r i b u t i o n : Central Europe, new for Scandinavia.

***Barichneumon perversus* (KRIECHBAUMER 1893)**

M a t e r i a l : Trap 38: 1♂ 13-20.vi.2005.

D i s t r i b u t i o n : Western Palearctic region, new for Scandinavia.

***Barichneumon plagiarius* (WESMAEL 1848)**

M a t e r i a l : Trap 6: 1♀ 18.viii.-4.ix.2004, trap 30: 2♂♂ 3.vii.-19.viii.2004, 1♀ 16.vi.-17.vii.2005, trap 2006: 1♀ 12.vii.-24.vii.2008.

D i s t r i b u t i o n : Western Palearctic region, known from Finland.

***Barichneumon sedulus* (GRAVENHORST 1829)**

M a t e r i a l : Trap 1001: 1♂ 13-24.viii.2005.

D i s t r i b u t i o n : Palearctic region, known from Denmark.

***Chasmias motatorius* (FABRICIUS 1775)**

M a t e r i a l : Trap 24: 1♂ 13.ix.-10.xii.2003, trap 26: 1♀ 27.v.-26.vi.2005, 1♀ 12.ix.-16.xi.2005, trap 37: 1♂ 6.viii.-6.ix.2004, trap 54: 1♂ 18.viii.-1.ix.2003, 1♂ 1.ix.-22.ix.2003, trap 2003: 1♂ 24.vii.-14.viii.2006, trap 2046: 1♀ 1.vii.-16.vii.2008, 1♂ 16.vii.-1.viii.2008.

D i s t r i b u t i o n : Palearctic region, known from Norway, Denmark and Finland.

***Cratichneumon armillatops* RASNITSYN 1981 new ♀**

syn. *Ichneumon armillatus* WESMAEL 1845 praeocc.

M a t e r i a l : Trap 49: 1♀ 1.i.-1.vi.2004.

D i s t r i b u t i o n : Palearctic region, known from Finland.

***Cratichneumon coruscator* (LINNAEUS 1758)**

M a t e r i a l : Trap 22: 1♂ 20.v.-28.vi.2006; Trap 28: 1♂ 06 VI-05 VII 2005.

D i s t r i b u t i o n : Palaearctic region, known from Norway.

***Cratichneumon semirufus* (GRAVENHORST 1820)**

M a t e r i a l : Trap 13: 1♀ 26.vii.-2.viii.2005.

D i s t r i b u t i o n : Palearctic region, new for Scandinavia.

***Cratichneumon vulpecula* (KRIECHBAUMER 1875)**

M a t e r i a l : Trap 50: 2♀ ♀ 8.vii.-5.viii.2004, trap 54: 1♀ 5.viii.-20.viii.2004.

D i s t r i b u t i o n : Palearctic region, known from Finland.

***Diphys trifasciatus* (GRAVENHORST 1829)**

M a t e r i a l : Trap 1: 1♂ 11.vii.-4.viii.2003, trap 15: 2♂♂ 19.vii.-2.viii.2005, trap 17: 2♂♂ 1.vii.-17.vii.2005, trap 20: 2♂♂ 25.vi.-20.vii.2003, trap 28: 1♂ 2.viii.-19.viii.2004, trap 37: 3♂♂ 6.viii.-6.ix.2004, trap 41: 1♂ 3.viii.-6.viii.2004, trap 54: 1♂ 5.viii.-20.viii. 2004, trap 1003: 6♂♂ 10.vii.-24.vii.2005, trap 2006: 1♀ 12.vii.-24.vii.2008.

D i s t r i b u t i o n : Palearctic region, known from Norway.

***Eristicus clericus* (GRAVENHORST 1829)**

M a t e r i a l : Trap 7: 1♂ 2.vi.-1.vii.2004, trap 1000: 1♀ 2.vii.-12.vii.2005, 1♀ 12.vii.-18.vii.2005, trap 1001: 2♂♂ 4.vi.-19.vi.2005.

D i s t r i b u t i o n : Central and Southern Europe, new for Scandinavia.

***Exephanes venustus* (TISCHBEIN 1876)**

M a t e r i a l : Trap 7: 1♀ 27.vi.-1.vii.2004, trap 1001: 2♀ ♀ 27.iv.-18.v.2006.

D i s t r i b u t i o n : Western Palearctic region, known from Denmark and Finland.

***Gareila nivata* (GRAVENHORST 1820)**

M a t e r i a l : Trap 1000: 1♂ 2.vii.-12.vii.2005, 1♀ 18.vii.-2.viii.2005, 1♀ 24.viii.-12.ix.2005, 1♀ 12.ix.-10.x.2005, trap 1008: 1♀ 4.vii.-10.vii.2006, 1♀ 16.vii.-22.vii.2006.

D i s t r i b u t i o n : Palearctic region, new for Scandinavia.

***Hepiopelmus variegatorius* (PANZER 1800)**

M a t e r i a l : Trap 1001: 2♂♂ 13.viii.-24.viii.2005, 1♂ 24.viii.-12.ix.2005.

D i s t r i b u t i o n : Palearctic region, known from Finland.

***Ichneumon alpestriops* HEINRICH 1951**

M a t e r i a l : Trap 48: 1♀ 20.iv.-27.v.2004.

D i s t r i b u t i o n : Western Palearctic region, known from Finland.

***Ichneumon balteatus* WESMAEL 1845**

M a t e r i a l : Trap 6: 1♂ 12.-26.viii.2003, Trap 2006: 1♂ 13-24.vii.2007.

D i s t r i b u t i o n : Palaearctic, new for Scandinavia.

***Ichneumon fulvicornis* GRAVENHORST 1829**

M a t e r i a l : Trap 2: 1♂ 8.vi.-8.vii.2003, trap 5: 1♂ 30.vi.-13.vii.2004, trap 58: 1♂ 1.ix.-22.ix.2003.

D i s t r i b u t i o n : Central and Southern Europe, new for Scandinavia.

***Ichneumon ingratus* (HELLÉN 1951)**

M a t e r i a l : Trap 27: 1♀ 6.ix.-20.ix.2004, trap 1002: 1♀ 3.x.-31.x. 2005.

D i s t r i b u t i o n : Western Palearctic region, known from Finland.

***Ichneumon magistratus* HILPERT 1992**

M a t e r i a l : Trap 1000: 1♂ 27.vi.-2.vii.2005.

D i s t r i b u t i o n : Only known from Siberia yet, new for Scandinavia and the Western Palaearctic region.

***Ichneumon quinquealbatus* KRIECHBAUMER 1890**

M a t e r i a l : Trap 24: 1♂ 27.vi.-22.vii.2004.

D i s t r i b u t i o n : Western Palaearctic, new for Scandinavia.

***Ichneumon spurius* WESMAEL 1848**

M a t e r i a l : Trap 15: 3 ♀ ♀ 28.v.-5.vi.2005, trap 17: 1 ♀ 31.v.-15.vi.2005, 1 ♀ 15.vi.-1.vii.2005, trap 24: 3 ♂ ♂ 15.vii.-1.viii.2003, 3 ♂ ♂ 31.v.-20.vii.2005, trap 26: 1 ♂ 15.viii.-28.viii.2004, 1 ♀ 27.v.-26.vi.2005, trap 28: 4 ♂ ♂ 8.vii.-18.vii.2003, trap 30: 1 ♀ 19.viii.-28.x.2004, trap 31: 1 ♀ 14.iv.-25.v.2004, trap 33: 1 ♂ 9.viii.-25.viii.2004, trap 35: 1 ♂ 8.vii.-13.vii.2005, trap 36: 5 ♂ ♂ 6.viii.-8.ix.2004, trap 37: 19 ♂ ♂ 6.viii.-6.ix.2004, trap 44: 1 ♂ 29.vii.-18.viii.2003, 1 ♀ 16.vi.-5.vii.2004, trap 57: 1 ♀ 2.xi.2003-18.vi.2004, trap 1000: 1 ♀ 18.vii.-2.viii.2005, trap 1001: 1 ♀ 4.vi.-19.vi.2005, trap 1003: 3 ♂ ♂ 10.vii.-24.vii.2005, trap 1008: 1 ♂ 20.vii.-25.vii.2005, 1 ♂ 10.viii.-15.viii.2005, 1 ♂ 4.vii.-10.vii.2006, 1 ♂ 16.vii.-22.vii.2006.

D i s t r i b u t i o n : Palearctic region, known from Norway and Finland.

***Ichneumon stramentor* RASNITSYN 1981**

M a t e r i a l : Trap 24: 1 ♂ 13.ix.-10.xii.2003, trap 43: 1 ♀ 28.vii.-11.viii.2004.

D i s t r i b u t i o n : Western Palearctic region, known from Finland.

***Limerodops elongatus* (BRISCHKE 1865)**

M a t e r i a l : Trap 1001: 1 ♀ 02-12.vii.2005, Trap 2003: 7 ♂ ♂ 09-29.vi.2006.

D i s t r i b u t i o n : Palearctic, known from Finland and Norway.

***Platylabops apricus* (GRAVENHORST 1820)**

M a t e r i a l : Trap 6: 1 ♀ 20.ix.-4.x.2004.

D i s t r i b u t i o n : Holarctis, new for Scandinavia.

***Platylabops lariciatae* (KRIECHBAUMER 1890)**

M a t e r i a l : Trap 24: 1 ♂ 31.v.-20.vii.2005.

D i s t r i b u t i o n : Central and Western Europe, new for Scandinavia.

***Probolus crassulus* HORSTMANN 2000**

M a t e r i a l : Trap 2: 1 ♀ 2.vii.-21.vii.2003, 1 ♀ 11.viii.-7.ix.2004.

D i s t r i b u t i o n : Western Palearctic region, known from Norway.

***Rictichneumon pachymerus* (HARTIG 1838)**

M a t e r i a l : Trap 8: 1 ♀ 15.vii.-4.viii.2003.

D i s t r i b u t i o n : Holarctic, new for Scandinavia.

***Spilichneumon celsiae* (TISCHBEIN 1878)**

M a t e r i a l : Trap 28: 1 ♀ 6.vi.-5.vii.2005.

D i s t r i b u t i o n : Palearctic region, known from Finland.

***Spilichneumon occisorius* (FABRICIUS 1793)**

M a t e r i a l : Trap 2046: 2♂♂ 16.viii.-1.ix.2008.

D i s t r i b u t i o n : Palearctic region, known from Norway, Denmark and Finland.

***Spilothyrates podolicus* (HEINRICH 1936)**

M a t e r i a l : Trap 1002: 3♂♂ 24.viii.-12.ix.2005.

D i s t r i b u t i o n : Known from Central Europe, new for Scandinavia.

***Stenobarichneumon basalis* (PERKINS 1960)**

syn. *basiglyptus* auct. nec KRIECHBAUMER.

M a t e r i a l : Trap 4: 1♂ 21.vi.-20.vii. 2004, trap 5: 1♂ 16-30.vi.2004, trap 6: 1♂ 20.ix.-4.x.2004, trap 20: 1♂ 26.vi.-5.vii.2005, trap 28: 1♂ 2-19.viii.2004, 1♂ 6.vi.-5.vii.2005, 2♂♂ 17.vii.-9.viii.2005, trap 38: 1♂ 7-19.viii.2003, 2♂♂ 27.v.-8.vi.2004, 5♂♂ 24-31.v.2005, 1♂ 5-10.viii.2005, trap 50: 2♂♂ 8.vii.-5.viii.2004, trap 54: 1♂ 1-22.ix.2003, trap 57: 1♂ 1-22.ix.2003, trap 2046: 1♂ 16.vii.-1.viii. 2008.

D i s t r i b u t i o n : Palearctic region, known from Norway and Finland.

***Thyrates camelinus* (WESMAEL 1845)**

M a t e r i a l : Trap 6: 3♂♂ 17.vi.-2.vii.2003, trap 7: 3♂♂ 27.vi.-1.vii.2004, trap 22: 2♂♂ 20.v.-28.vi.2006, trap 2003: 1♂ 29.vi.-7.vii.2006.

D i s t r i b u t i o n : Palearctic region, known from Finland.

***Virgichneumon distincticornis* (SCHMIEDEKNECHT 1928)**

M a t e r i a l : Trap 7: 1♂ 27.vi.-1.vii.2004, trap 9: 1♀ 18.vi.-6.vii.2003.

D i s t r i b u t i o n : Western Palearctic region, known from Finland.

***Virgichneumon dumeticola* (GRAVENHORST 1829)**

M a t e r i a l : Trap 28: 1♀ 17.vii.-9.viii.2005.

D i s t r i b u t i o n : Palearctic region, known from Denmark.

***Virgichneumon faunus* (GRAVENHORST 1829)**

M a t e r i a l : Trap 9: 11♂♂ 6.vii.-19.vii. 2003, 1♂ 24.vi.-16.vii.2005, trap 18: 1♂ 30.vi.-10.vii.2004, trap 30: 1♂ 16.vi.-17.vii.2005.

D i s t r i b u t i o n : Palearctic region, known from Norway and Finland.

***Virgichneumon krapinensis* (SCHMIEDEKNECHT 1928)**

M a t e r i a l : Trap 2: 1♀ 2.vii.-21.vii.2003, trap 3: 1♂ 8.vi.-2.vii.2003, 2♂♂ 8.vi.-2.vii.2003, 1♀ 11.viii.-7.ix.2004, trap 43: 2♀♀ 28.vii.-11.viii.2004.

D i s t r i b u t i o n : Central Europe, new for Scandinavia.

Tribe Joppocryptini

Pseudoplatylabus violentus (GRAVENHORST 1829)

M a t e r i a l : Trap 54: 1♂ 18.viii.-1.ix.2003, trap 2046: 1♂ 16.vii.-1.viii.2008, 1♂ 15.vi.-1.vii.2008.

D i s t r i b u t i o n : Holarctis, known from Finland.

Tribe Heresiarchini

Aglaojoppa centummaculata (CHRIST 1791)

M a t e r i a l : Trap 41: 1♀ 20.viii.-17.ix.2004.

D i s t r i b u t i o n : Palearctic region, known from Finland and Norway,

Amblyjoppa fuscipennis (WESMAEL 1845)

M a t e r i a l : Trap 1: 1♂ 2.vii.-11.viii.2003, trap 6: 9♂♂ 17.vi.-2.vii.2003, trap 20: 2♀♀ and 1♂ 25.vi.-20.vii.2003, 1♀ 20.vii.-12.viii.2003, trap 22: 3♀♀ 17.vii.-7.viii.2003, 1♂ 1.vi.-23.vi.2004, trap 28: 4♂♂ 10.iv.-6.vi.2005, 4♂♂ 6.vi.-5.vii.2005.

D i s t r i b u t i o n : Palearctic region, known from Norway and Finland.

Coelichneumon biguttulatus (KRIECHBAUMER 1875)

M a t e r i a l : Trap 5: 1♂ 30.vi.-13.vii.2004, trap 1001: 1♂ 18.v.-15.vi.2006, trap 1008: 2♀♀ 8.viii.-19.viii.2006.

D i s t r i b u t i o n : Central Europe, new for Scandinavia.

Coelichneumon cyaniventris (WESMAEL 1859)

M a t e r i a l : Trap 4: 1♂ 21.vii.-4.viii.2003.

D i s t r i b u t i o n : Palearctic region, known from Norway and Finland.

Coelichneumon nigerrimus (STEPHENS 1835)

syn. *Ichneumon derasus* WESMAEL 1845

M a t e r i a l : Trap 2: 1♂ 28.i.-18.vi.2004, 1♂ 11.viii.-7.ix.2004, trap 5: 1♀ 30.vi.-13.vii.2004, trap 6: 1♂ 17.vi.-2.vii.2003, trap 41: 3♂♂ 4.vi.-18.vi.2004, 1♂ 6.viii.-20.viii.2004, trap 1005: 1♂ 22.v.-15.vii.2005.

D i s t r i b u t i o n : Palearctic region, known from Norway and Finland.

Heresiarches eudoxius (WESMAEL 1845)

M a t e r i a l : Trap 37: 3♂♂ 6.viii.-6.ix.2004.

D i s t r i b u t i o n : Western Palearctic region, new for Scandinavia.

Sypsis optica (GRAVENHORST 1829)

M a t e r i a l : Trap 7: 1♂ 3.vii.-29.vii.2003.

D i s t r i b u t i o n : Western Palearctic region, known from Denmark.

***Syspasis scutellator* (GRAVENHORST 1829)**

M a t e r i a l : Trap 6: 1♀ 12-26.viii.2003.

D i s t r i b u t i o n : Palaearctic, known from Denmark and Finland.

***Syspasis tauma* (HEINRICH 1951)**

M a t e r i a l : Trap 58: 1♀ 28.v.-18.vi.2004.

D i s t r i b u t i o n : Holarctis, known from Finland.

Descriptions

***Aoplus biannulatorius* (THUNBERG 1824), new ♂**

M a t e r i a l : Trap 9: 1♂ 6.vii.-19.vii.2003, trap 20: 1♂ 20.vii.-12.viii.2003.

Body length 10 mm. Flagellum with 31-32 segments, first segment about 3.0 times and the second one 2.2 times as long as wide, together 0.70-0.75 times as long as the compound eyes, tyloids on flagellomeres 7-15, long oval, maximally 0.8 times as long as their segment.

Temples strongly narrowed behind the eyes, distance of lateral ocellus to compound eye 1.0 times as long as its diameter; head with fine granulation, matte; face and clypeus with superficial puncture. Malar index 0.3-0.4.

Mesosoma covered with light brownish hairs, epomia and notauli distinct. Mesoscutum with granulation and superficial puncture, matte. Mesopleura and metapleura with distinct puncture and microsculpture, but shining. Scutellum moderately raised, longer than wide, without lateral carina. Area superomedia wider than long, halfmoon-like, costula indistinct, area petiolaris with transverse rugae. Hind femur about 3.8 times as long as high.

Lateral field of postpetiole about 0.4 times as wide as the median field, median field elevated but without dorsal carinae, finely rugulose. Tergite 2 about 1.2 times as long as wide, gastrocoelus not impressed, thyridium very large, oblique, about 2.2 times as wide as the thyridial interval, the interval 0.5 times as wide as the median field of postpetiole. Basal tergites with granulation and very superficial puncture, matte, the caudal tergites more shining.

Colour black. Flagellar segments reddish-brown below and black above, tyloids brownish. Face (except two black stripes between facial orbits and epistoma and a black spot on epistoma), clypeus, frontal and outer orbits and scapus beneath yellow. Collare black, hind edge or upper margin of pronotum and tegula more or less reddish, subtegular ridge, hind half of scutellum, and sometimes postscutellum yellowish. Metasoma black, or median field of postpetiole apically and apical margin of tergite 2 somewhat reddish. Fornt and middle coxae reddish, hind coxa black, with or without indistinct reddish pattern. Legs otherwise red, front tibia yellowish in front, hind tibia slightly darkened apically, hind tarsus darkened. Pterostigma brown.

Taxonomical comment: The ♂ of *Aoplus biannulatorius* (THUNBERG) runs to *Aoplus castaneus* (GRAVENHORST) in the key of RASNITSYN (1981) but differs by its coloration

and the much longer tyloids on segments 7-15 (in *Aoplus castaneus* (GRAVENHORST) tyloids on segments 8-13, oval to long oval, their maximal length only 0.6 times their segments).

***Cratichneumon armillatops* RASNITSYN 1981, new ♀**

M a t e r i a l : Trap 49: 1 ♀ 1.i.-1.vi.2004.

Body length 6.5 mm. Flagellum with 23-24 segments, widened apically (preapical segments about 1.5-2.0 times as wide as the basal one), the first and second segments each 1.4 times as long as wide, together about 0.41 times the length of the compound eye, the fourth or fifth quadrate, widest segments about 1.1 times as wide as long.

Temple long, slightly narrowed behind the eye. Ocelli very small, distance of lateral ocellus to compound eye 2.3 times as long as its diameter. Frons with fine punctures, face with denser punctures, epistoma also with microsculpture, clypeus smooth and shining, with scattered punctures, malar space about 1.3 times as long as the mandibular width, viewed from lateral temple widened below (widest at the junction of genal and hypostomal carinae) (fig. 2), and with very scattered punctures below.

Mesosoma with brownish hairs, mesoscutum densely punctured, mesopleura and metapleura with longitudinal rugulose-puncture, speculum punctured, epicnemium not elevated. Scutellum flat, without lateral carinae, area superomedia almost rectangular, 1.2 times as long as wide, costula indistinct. Hind coxa with distinct whitish scopa, hind femur very stout, about 2.8 times as long as high.

Postpetiole without dorsal carinae, median field not differentiated, very finely rugulose, thyridia on tergite 2 very small, gastrocoeli not developed, tergites 2 and 3 densely and coarsely punctured, matte, tergite 4 with very superficial puncture, the fifth almost smooth. Ovipositor slender, slightly protruding beyond the metasomal apex.

Color: black. Scape and flagellar segments 1-5 red, segments 6-11 white, the remaining black. Clypeus more or less reddish, head otherwise black. Scutellum ivory, mesosoma otherwise black. Posterolateral edges of postpetiole, tergite 2 and 3 completely, the fourth laterally red, the seventh tergite brownish. Legs with coxae and trochanteres red, hind femur black in the apical half, front and middle tibiae with large whitish spots in front, the hind one with a large subbasal whitish ring, the margins of the ring reddish, base and apex of tibia III infuscate. Pterostigma yellowish-brown.

Acknowledgement

We thank the initiators of the Swedish Malaise Trap Project, Thomas PAPE and Fredrik RONQUIST, as well as all Swedish collectors for the realization of this project. For her permanent support, help of our work and allowance to prepare and study the material we would like to thank the leader of the Swedish Malaise Trap Project, Kajsa GLEMHORN.

References

KOPONEN M., JUSSILA R. & V. VIKBERG (2009): (A check list of Finnish Hymenoptera, Parasitica. part 7. Family Ichneumonidae, subfamilies Alomyinae and Ichneumoninae) in Finnish. – *Sahlbergia* **15**: 14-48.

RASNITSYN A.P. (1981): [Subfamily Ichneumoninae]. – In: KASPARYAN D.R. (ed.), [Keys of the insects of the European part of USSR. Tom. III. Hymenoptera. Pars 3] in Russian. - Leningrad, 506-636.

RIEDEL M. (2008): Revision der westpaläarktischen Platylabini 1. Die Gattung *Platylabus* WESMAEL 1845. – *Spixiana* **31**: 105-172.

YU D., VAN ACHTERBERG K. & K. HORSTMANN (2012): World Ichneumonoidea 2011. – Taxapad, Vancouver.

Authors' addresses:

Dr. Matthias RIEDEL

Amselweg 9A

D-29683 Bad Fallingbostel

Germany

E-Mail: mamaflo.riedel@t-online.de

Pelle MAGNUSSON

Station Linné

Ölands Skogsby 161

SE-386 93 Färjestaden

Sweden

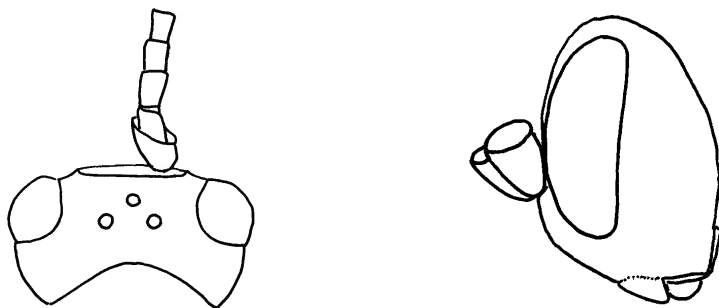


Fig. 2: Head of ♀ of *Cratichneumon armillatops* RASNITSYN from lateral and dorsal

Druck, Eigentümer, Herausgeber, Verleger und für den Inhalt verantwortlich:
Maximilian SCHWARZ, Konsulent f. Wissenschaft der Oberösterreichischen Landesregierung, Eibenweg 6,
A-4052 Ansfelden, E-Mail: maximilian.schwarz@liwest.at.

Redaktion: Erich DILLER, ZSM, Münchhausenstraße 21, D-81247 München;
Roland GERSTMEIER, Lehrstuhl f. Tierökologie, H.-C.-v.-Carlowitz-Pl. 2, D-85350 Freising
Fritz GUSENLEITNER, Lungitzerstr. 51, A-4222 St. Georgen/Gusen;
Wolfgang SPEIDEL, MWM, Tengstraße 33, D-80796 München;
Thomas WITT, Tengstraße 33, D-80796 München.

Adresse: Entomofauna, Redaktion und Schriftentausch c/o Museum Witt, Tengstr. 33, 80796 München,
Deutschland, E-Mail: thomas@witt-thomas.com; Entomofauna, Redaktion c/o Fritz Gusenleitner,
Lungitzerstr. 51, 4222 St. Georgen/Gusen, Austria, E-Mail: f.gusenleitner@landesmuseum.at

ZOBODAT - www.zobodat.at

Zoologisch-Botanische Datenbank/Zoological-Botanical Database

Digitale Literatur/Digital Literature

Zeitschrift/Journal: [Entomofauna](#)

Jahr/Year: 2014

Band/Volume: [0035](#)

Autor(en)/Author(s): Riedel Matthias, Magnusson Pelle

Artikel/Article: [A contribution to the Swedish fauna of Ichneumoninae \(Hymenoptera, Ichneumonidae\), with descriptions of the female of *Cratichneumon armillatops* RASNITSYN 1981 and the male of *Aoplus biannulatorius* \(THUNBERG 1824\) 433-448](#)