

# ENTOMOLOGISCHE MITTEILUNGEN

aus dem  
Zoologischen Museum Hamburg

Herausgeber: Prof. Dr. H. STRÜMPER, Dr. G. RACK, Dr. H. DASTYCH,  
Prof. Dr. R. ABRAHAM, Prof. Dr. W. RÜHM  
Schriftleitung: Dr. H. DASTYCH

ISSN 0044-5223

Hamburg

12. Band

15. Oktober 1996

Nr. 154

## On the systematic position of *Calliphara bipunctata* Lehmann, 1920 (Hemiptera: Heteroptera: Scutelleridae)

JERZY A. LIS and SLAWOMIR SKÓRKA

(With 3 figures)

### Abstract

*Calliphara bipunctata* Lehmann, 1920 (Hemiptera: Scutelleridae) is redescribed and the lectotype is designated from the series of syntypes. As a result of the study on the morphology of male genitalia, the species is transferred to the allied genus *Notacalliphara* Lyal, 1979.

### Introduction

The scutellerid species *Calliphara bipunctata* was described by Lehmann (1920) from two males collected in Obi Island in the Moluccas. Lyal (1979) revised the genus *Calliphara* Germar, and classified its 15 species and 6 subspecies into four species group on the basis of the morphology of male genitalia. Unfortunately, Lyal (*op. cit.*) studied neither the type material nor other specimens of *Calliphara bipunctata* Lehm., and the species was placed among those of unknown systematic position within the genus.

Lyal (1979, p. 174) was wrong when he had wrote that the type material of *C. bipunctata* should be preserved in the Naturmuseum und Forschungsinstitut Senckenberg in Frankfurt (Germany); the senior author of the present paper (J.A. Lis) has found the syntypes of *C. bipunctata* in the collection of the Zoological Museum in Hamburg, where they have originally been deposited by Lehmann (1920, p. 140: "Die beiden Exemplare gehören dem Hamburger Museum").

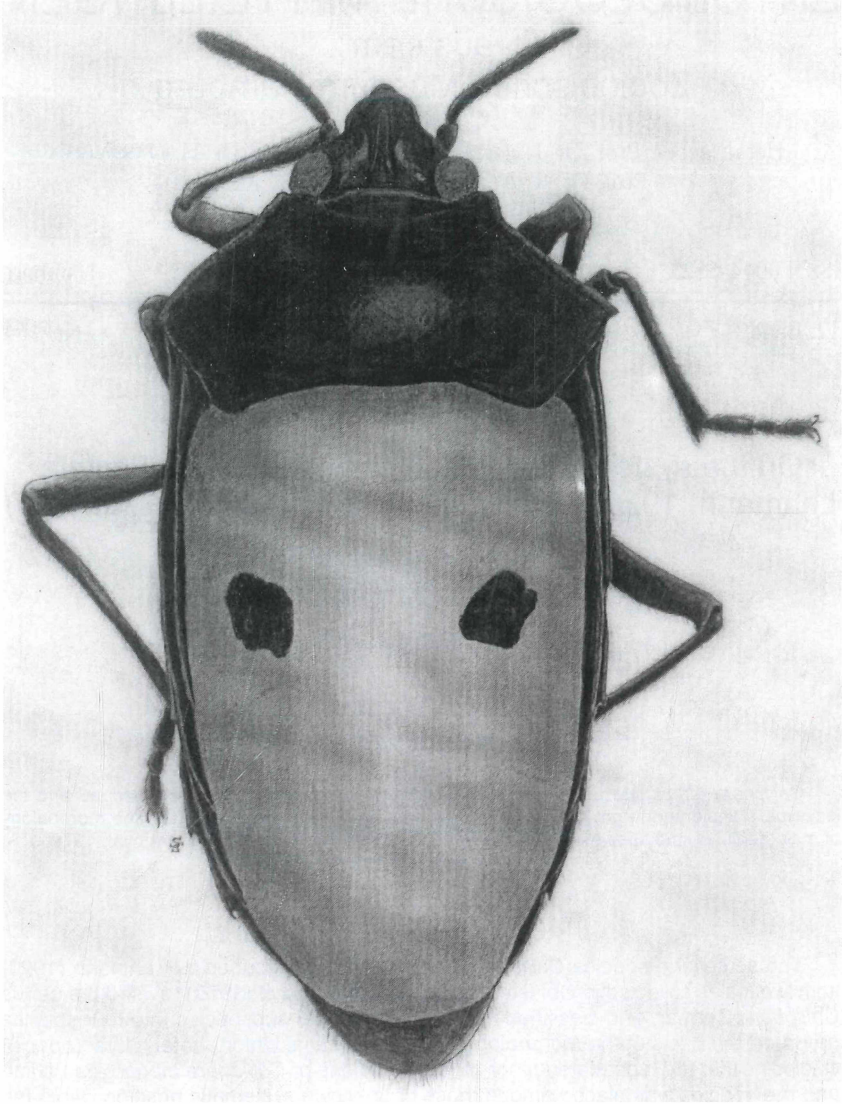


Fig. 1. *Notacalliphara bipunctata* (Lehmann) - general habitus.

After our detailed studies on the male genitalia of *C. bipunctata* it has turned out that the species should be transferred to the genus *Notacalliphara* Lyal.

## Redescription of the species

### *Notacalliphara bipunctata* (Lehmann), n. comb. (Figs 1-3)

*Calliphara bipunctata* Lehmann, 1920: 139 (two syntypes preserved in the Zoological Museum in Hamburg, one of them selected as the lectotype).

TYPE MATERIAL: Lectotype male (present designation): "Ins. Obi, Molukken, H. Rolle vend., 15.III.1903; Typus; *Calliphara bipunctata* Lehmann, Typus; *bipunctata* Lehmann; Dr. H. Lehmann det. 1920; Z.M.H. Hamburg."

Paralectotype male: "Ins. Obi, Molukken, H. Rolle vend., 15.III.1903; Cotypus; *Calliphara bipunctata* Lehmann, Cotypus; *bipunctata* Lehmann; Dr. H. Lehmann det. 1920; Z.M.H. Hamburg."

DESCRIPTION (males): Body length: 18.2-19.2 mm; maximum pronotal width 8.9-9.5 mm. Head black, sparsely pilose; clypeus somewhat elevated anteriorly and conspicuously broadened apicad; paraclypei shorter than clypeus; eyes dark brown, ocelli red; vertex 2.7-2.8 times broader than the diameter of the eye; antennae blackish brown, 1st segment not reaching apex of head and about twice as long as the 2nd, 3rd segment the longest and about 5.0-6.5 times longer than the 2nd, 4th and 5th segments missing; rostrum blackish brown reaching almost the posterior margin of 2nd abdominal sternite.

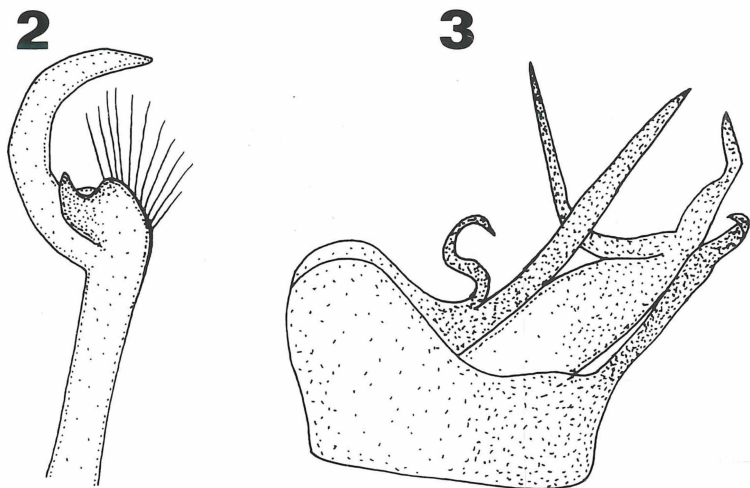
Pronotum black, weakly and sparsely punctate. Scutellum yellowish brown with two distinct black spots on either side in its anterior half (Fig. 1); apex broadly rounded; scutellar disc entirely densely punctate with colourless conspicuous punctures. Corium black, membrane blackish brown. Legs blackish brown or dark brown.

Ventral surface of abdomen distinctly wrinkled and sparsely punctate; posterior angles of sternites III-VII produced into small spines, of which first three are visible also in a dorsal view; all sternites black with lateral margins brown or yellowish brown.

Pygophore with ventral lip absent, dorsal lip present, small; ventral and dorsal margins of pygophore opening with long hairs. Parameres hook-shaped, with long setae in the basal stem, hypophysis bifurcated in basal part (Fig. 2). Vesica long, sclerotized, apically bilobed. Conjunctiva produced into three pairs of long appendages - I almost fully sclerotized, unbranched and curved, II fully sclerotized and bifurcated, III membranous, sclerotized to a degree, bifurcated, branches strongly sclerotized (Fig. 3).

Females unknown.

COMPARATIVE NOTES: The species was originally described in the genus *Calliphara* (Lehmann, 1920) because of its external similarity to other representatives of that genus. Nevertheless, the absence of dorsal and ventral patches of short, stout setae on each side of caudal face of its pygophore (which are the diagnostic character for *Calliphara* - Lyal, 1979) suggests the species should be excluded from the genus



Figs 2-3. *Notacalliphara bipunctata* (Lehmann), male genitalia: 2 - paramere, 3 - conjunctival appendages.

where it was originally described. Furthermore, the peculiar morphology of pygophore (absence of ventral lip and presence of the dorsal one, margins of opening bearing long hairs), bifurcated parameres, and the shape of conjunctiva show clearly that the species should be transferred to *Notacalliphara* Lyal, the genus closely allied to *Calliphara*.

*Notacalliphara* was erected by Lyal (1979) for *Calliphara rostrata* Distant (from Key Island) and *Notacalliphara pseudofasciata* (described by Lyal from New Guinea as a new species). The third species presently transferred to the genus, *N. bipunctata* (from Moluccas) can be easily separated from the other two by its brown scutellum bearing two distinct black patches (Fig. 1).

### Acknowledgement

We wish to express our thanks to Prof. Dr. H. Strümpel and Dr. H. Dastych (Zoologisches Museum Hamburg) for the loan of the type material of *C. bipunctata*, and for kind help to the senior author during his stay at the Hamburg University in 1995.

### Zusammenfassung

Eine Wanzenart, *Calliphara bipunctata* Lehmann, 1920 (Hemiptera, Scutelleridae) wird wiederbeschrieben und der Gattung *Notacalliphara* zugeordnet. Der Lectotypus für diese Art wird designiert.

## References

Lehmann, H., 1920: Scutellerinae. - Senckenbergiana, **2**: 134-142. Frankfurt a. M.

Lyal, C.H.C., 1979: A review of the genus *Calliphara* Germar, 1839 (Hemiptera: Scutelleridae). - Zoologische Mededelingen, **54**: 149-181. Leiden.

Authors' address:

Dr. hab. J. A. Lis and S. Skórka M. Sc., Department of General Zoology, University of Opole, Oleska 22, 45-052 Opole, Poland.

# ZOBODAT - [www.zobodat.at](http://www.zobodat.at)

Zoologisch-Botanische Datenbank/Zoological-Botanical Database

Digitale Literatur/Digital Literature

Zeitschrift/Journal: [Entomologische Mitteilungen aus dem Zoologischen Museum Hamburg](#)

Jahr/Year: 1996

Band/Volume: [12](#)

Autor(en)/Author(s): Lis Jerzy A., Skorka Slawomir

Artikel/Article: [On the systematic position of Calliphara bipunctata Lehmann, 1920 \(Hemiptera: Heteroptera: Scutelleridae\) 45-49](#)