

Entomol. Mitt. Zool. Mus. Hamburg, Bd. 4 (1975), S. 575—578

Lectotypes of the species of *Notalina* described by G. ULMER (Trichoptera, Leptoceridae)¹⁾

By HERBERT H. ROSS and JOHN C. MORSE²⁾

(with 2 figures)

In 1907 and 1908, Dr. GEORG ULMER described two triplectidine species of Leptoceridae from south of Perth, Western Australia, *Triplectides flava* and *T. delicatula*. MOSELY (1936) transferred both species to the genus *Notalina* MOSELY, to which they patently belong. MOSELY and KIMMINS (1953) apparently did not see the types, because they simply reproduced ULMER's figures. In response to inquiries about the types, Prof. Dr. H. WEIDNER of the Hamburg Museum sent us three "typen" of each species, which must be considered as syntypes. In this paper we designate lectotypes of each. The specimens are in 80 % ethanol, and the abdomens had not been macerated with KOH. We did this for each lectotype and made drawings of them. These macerated abdomens exposed a few characters not seen by ULMER, whose illustrations are non-the-less excellent.

All the material reported on here is in the Hamburg Museum.

Notalina delicatula (ULMER) (Fig. 1)

Triplectides delicatula ULMER (1907: 131).

Triplectides delicatula ULMER (1908: 27).

Notalina delicatula (ULMER), MOSELY (1936: 115).

Diagnostic Remarks. The male genitalia have the tenth tergum incised to about midway, the incision rounded. The coxopodite of the inferior appendage has a sharp, moderately long, mesal projection near midpoint, and the basal enlarged portion with an ovate lobe bearing small setae; the mesal juncture of the two inferior appendages is markedly excavated. The phallus is in general typical of the genus. The fairly long sharp mesal projection is suggestive of *moselyi* Kimmings, but in that species the basal juncture area of the two inferior appendages forms a long projecting process.

Lectotype, ♂ — Selected and so labelled from a vial containing 1 ♂ and 2 ♀, and the label, "Hamb. S. W. Austral. Exp. 1905 / 139. Brunswick 7. X. / *Triplectides delicatula* ULMER / Typen Zool. Museum Hamburg" to which should be added "Serpentine R., S. W. Australia". — A ♀ syntype from the original vial has been labelled a paratype. The third specimen in the vial is a ♀ *Hydrobiosella* and is excluded from the type series.

¹⁾ This investigation was supported by a research grant from the National Science Foundation, U.S.A.

²⁾ Addresses of the authors: Professor HERBERT H. ROSS, Department of Entomology, University of Georgia, Athens, Georgia 30602, U.S.A. JOHN C. MORSE, Department of Entomology and Economic Zoology, Clemson University, Clemson, South Carolina 29631, U.S.A.

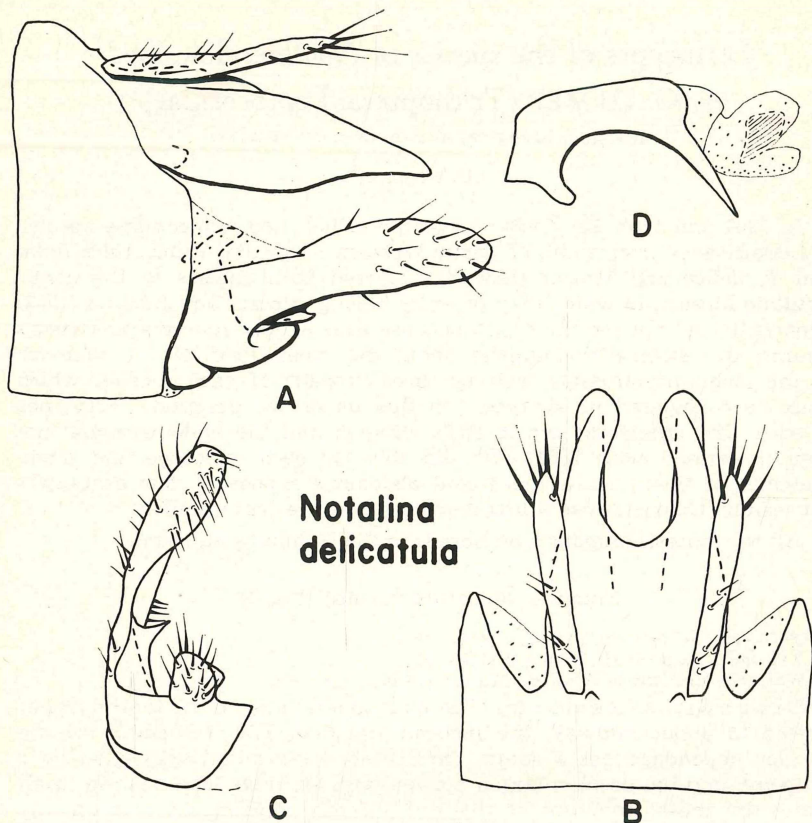


Fig. 1: *Notalina delicatula* male genitalia. A, left lateral view. B, dorsal view. C, inferior appendage, caudal view. D, phallus, left lateral view.

Notalina flava (ULMER) (Fig. 2)

Triplectides flava ULMER (1907: 131).

Triplectides flava ULMER (1908: 29).

Notalina flava (ULMER), MOSELY (1936: 117).

Diagnostic Remarks. In characteristics of the male genitalia, this species is remarkably dissimilar from the preceding. The tenth tergum has an angulate more ventral cleft and a broader one at a more dorsal level. The coxopodite of the inferior appendage has the mid-mesal projection forming two sharp processes, and the lateral area of the base bears two sharp projections arising from a basal carina. The juncture area of the bases of the inferior appendages appears to have no distinctive features. The species is unlike any other described member of the genus on the basis of the character states of the tenth tergum and inferior appendage.

Lectotype, ♂ — Selected and so labelled from a vial containing 3 ♂ and the label, "Hambg. S. W. Austral. Exp. 1905 / 131 Serpentine 23./25. IX / Triplectides flava Ulmer / Typen. Zool. Museum Hamburg" to which should be added "Wooroloo, Serpentine R., S. W. Australia". The other two ♂ syntypes have been labelled paratypes.

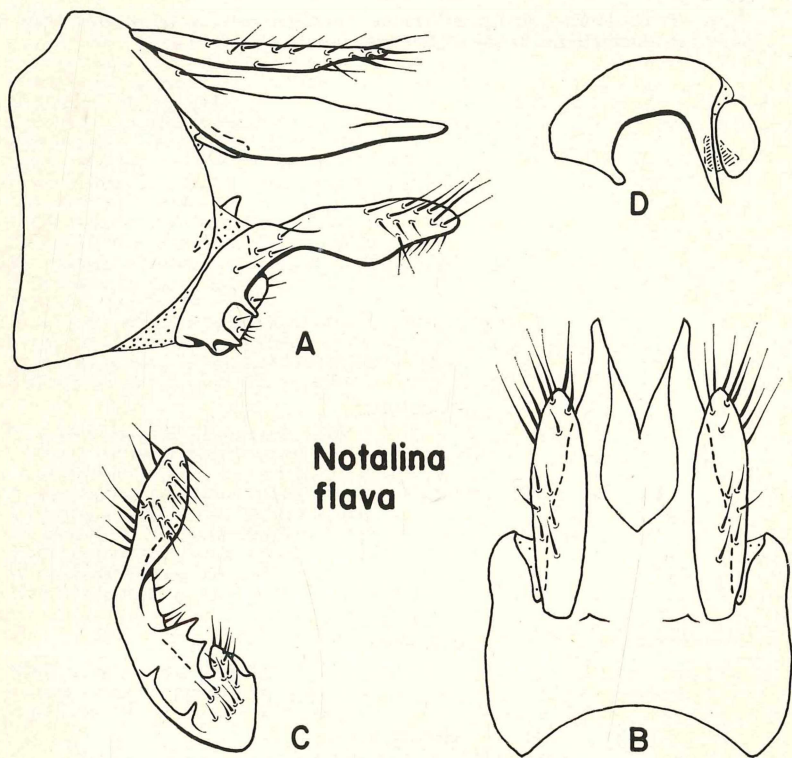


Fig. 2: *Notalina flava* male genitalia. A, left lateral view. B, dorsal view. C, inferior appendage, caudal view. D, phallus, left lateral view.

Literature Cited

- MOSELY, M. E., 1936: A revision of the Triplectidinae, a subfamily of the Leptoceridae (Trichoptera). — Trans. r. ent. Soc. London, **85** (3): 91—129.
- , and D. E. KIMMINS, 1953: The Trichoptera (caddis-flies) of Australia and New Zealand. — Adlard and Son. Ltd., Dorking, Surrey, England. 550 pp.
- ULMER, G., 1907: Trichoptera. — In P. WYTSMAN, Genera Insectorum, **60a**: 1 bis 259, 41 pls.
- . 1908: Trichoptera und Ephemeridae. In MICHAELSEN & HARTMEYER, Fauna Südwest-Australiens. **2**: 25—40, 23 figs. Jena.

ZOBODAT - www.zobodat.at

Zoologisch-Botanische Datenbank/Zoological-Botanical Database

Digitale Literatur/Digital Literature

Zeitschrift/Journal: [Entomologische Mitteilungen aus dem Zoologischen Museum Hamburg](#)

Jahr/Year: 1969

Band/Volume: [4](#)

Autor(en)/Author(s): Morse John C., Ross Herbert. H.

Artikel/Article: [Lectotypes of the species of Notalina described by G. ULMER \(Trichoptera, Leptoceridae\) 575-578](#)