

Supplement to “The species of the genus *Perigona* Castelnau from New Guinea, Sulawesi, Halmahera, and Australia, and of the *parvicollis-pygmaea*-lineage. (Coleoptera, Carabidae, Perigonini)” and to “The *Dolichoctis striata* complex (Coleoptera, Carabidae, Lebiini)”

Martin Baehr

Zoologische Staatssammlung München, Münchhausenstr. 21, D-81247 München, Germany

e-mail: martin.baehr@zsm.mwn.de

Abstract

Because important additional material was only available after the final composition of two revisionary papers, this supplement is added which enumerates the additional material. Included are additional paratypes of *Dolichoctis kitchingi*, *D. tetrastigma papuana*, *Perigona drumonti*, *P. ludovici dobodurae*, *P. macrops*, and *P. proxima*, additional material of *Dolichoctis rotundata rotundata* Schmidt-Goebel, *Perigona erimae* Csiki, *P. litura* (Perroud & Montriuzier), and *P. subcordata* Putzeys, and some females which are doubtfully attributed to *P. l. ludovici* Csiki, *P. ludovici dobodurae* subsp. n. and *P. proxima* sp. n. but are not included in the type series.

Also two additional new species are described from Papua New Guinea: *Perigona lutea* from Morobe Province and *P. striatipennis* from Umboi Island.

Zusammenfassung

Auf Grund von interessantem Material, das erst nach dem Satz der beiden in diesem Band erscheinenden Revisionen zugänglich wurde, wird dieses Supplement angehängt, das zusätzliches Material einer Reihe von Arten enthält: Weitere Paratypes von *Dolichoctis kitchingi*, *D. tetrastigma papuana*, *Perigona drumonti*, *P. ludovici dobodurae*, *P. macrops* und *P. proxima*, sowie zusätzliches Material von *Dolichoctis rotundata rotundata* Schmidt-Goebel, *Perigona erimae* Csiki, *P. litura* (Perroud & Montriuzier) und *P. subcordata* Putzeys, und einige Weibchen, die *P. l. ludovici* Csiki, *P. ludovici dobodurae* subsp. n. und *P. proxima* sp. n. zugeordnet werden, aber nicht in die Typenserie aufgenommen sind.

Ausserdem werden zwei weitere neue Arten von Papua New Guinea beschrieben: *Perigona lutea* aus der Morobe Provinz und *P. striatipennis* von Umboi Island.

Keywords

Coleoptera, Carabidae, Lebiini, Perigonini, *Dolichoctis*, *Perigona*, new species, supplement, New Guinea.

Introduction

When both revisionary papers on the Australian-Papuan *Perigona* and the *Dolichoctis-striata*-complex already were composed by the printer, I received numerous additional material for both papers from Bishop Museum, Honolulu (BMH), and a few specimens from Naturkunde-Museum, Erfurt (NME), that includes specimens from both genera, including two new species and additional material of certain new species described in the revisions. Because it was not possible to include the new records in the mentioned papers, these are added in the present supplement which enumerates the new records and describes two additional new species from New Guinea,

Methods and abbreviations are similar to those used in the mentioned revisions. All specimens are from Bishop Museum, Honolulu (BMH)) and Naturkundemuseum Erfurt (NME).

Altogether this supplement includes 121 specimens of the genus *Dolichoctis* and 45 specimens of the genus *Perigona*.

Genus *Dolichoctis* Schmidt-Goebel*Dolichoctis rotundata rotundata* Schmidt-Goebel

Additional examined material (2 ex.)

Vietnam: "N VIETNAM Haiphong Cat Ba Island vic. Cat Ba NP, 23.IV.2012 20°57'55"N, 106°60'E 190m, leg.A.Weigel" (NME).

Dolichoctis tetrastigma papuana subsp. n.

Additional paratypes (all specimens from BMH)

2 ♀♀, "NEW GUINEA: PAPUA / Normanby I. / Wakaluna, Sewa Bay / Jan. 1-8-1957 // W. W. Brandt / Collector // Borrowed fr. / Bishop Mus. // *Dolichoctis / striata* S-G. / det.Darl.'66"; 2 ♂♂, 1 ♀, "NEW GUINEA: PAPUA / Normanby I. / Wakaluna, Sewa Bay / Dec. 1-10-1956 // W. W. Brandt / Collector // Borrowed fr. / Bishop Mus. // *Dolichoctis / striata* S-G. / det.Darl.'66"; 5 ♂♂, 1 ♀, "NEW GUINEA: PAPUA / Normanby I. / Wakaluna, Sewa Bay / Dec. 11-20-1956 // W. W. Brandt / Collector // Borrowed fr. / Bishop Mus. // *Dolichoctis / striata* S-G. / det.Darl.'66"; 3 ♂♂, "NEW GUINEA: PAPUA / Normanby I. / Wakaluna, Sewa Bay / Dec. 21-31-1956 // W. W. Brandt / Collector // Borrowed fr. / Bishop Mus. // *Dolichoctis / striata* S-G. / det.Darl.'66"; 1 ♂ "NEW GUINEA: PAPUA / Woodlark I. (Murua) / Kulumadau Hill / Mar. 9-12-1957 // W. W. Brandt / Collector // Borrowed fr. / Bishop Mus. // *Dolichoctis / striata* S-G. / det.Darl.'66"; 2 ♂♂, 1 ♀, "NEW GUINEA (PAPUA) / Bisianumu, E. of / Port Moresby 500 m. / June 6, 1955 // primary forest // J. L. Gressitt / Collector // *Dolichoctis / striata* S-G. / det.Darl.'66"; 5 ♀♀, "NEW GUINEA: SE / Port Moresby to / Brown River, 30m / 29.X-1.XI.1963 // J. Sedlacek / Collector // BISHOP // *Dolichoctis / striata* Schmidt-Goebel / det. G.E. Ball, 1989"; 1 ♀, "NEW GUINEA: PAPUA / Brown River / May 21, 1956 // E. J. Ford, Jr. / Collector // Borrowed fr. / Bishop Mus. // *Dolichoctis / striata* S-G. / det.Darl.'66"; 1 ♂, 1 ♀, "NEW GUINEA (PAPUA) / Brown R., E. of / Port Moresby 100m. / June 8, 1955 // J. L. Gressitt / Collector // Borrowed fr. / Bishop Mus. // *Dolichoctis / striata* S-G. / det. Darl.'66"; 1 ♂, 1 ♀, "NEW GUINEA: PAPUA / Owen Stanley Range / Goilala: Loloipa / I-16-30-1958 // W. W. Brandt / Collector // BISHOP // Borrowed fr. / Bishop Mus. // *Dolichoctis / striata* S-G. / det.Darl.'66"; 8 ♂♂, 4 ♀♀, "PAPUA: FLY R. Kiunga, 86m August 1960 / J. Sedlacek Collector BISHOP // *Dolichoctis / striata* Schmidt-Goebel / det. G.E. Ball, 1989"; 1 ♂, 1 ♀, "N. Guinea: SE / Milne Bay / 16-23.2.69 // J. Sedlacek / Collector // BISHOP MUS. // *Dolichoctis / striata* Schmidt-Goebel / det. G.E. Ball, 1989"; 3 ♂♂, 3 ♀♀, "NEW GUINEA (NE) / Busu R., E. of / Lae 100 m. / Sept. 13, 1955 // J. L. Gressitt / Collector // Borrowed fr. / Bishop Mus. // *Dolichoctis / striata* S-G. / det.Darl.'66"; 2 ♂♂, "NEW GUINEA: PAPUA / Kokoda-Pitoki / 450m, III-24-1956 // J. L. Gressitt / Collector // Borrowed fr. / Bishop Mus. // *Dolichoctis / striata* S-G. / det.Darl.'66"; 1 ♂, "NEW GUINEA: PAPUA / Kokoda / 28-29.III.1956 // J. L. Gressitt / Collector // Borrowed fr. / Bishop Mus. // *Dolichoctis / striata* S-G. / det.Darl.'66"; 1 ♂, "NEW GUINEA (NE) / Huon Peninsula / Finschhafen, 80m. / 13.IV.1963 200m // J. Sedlacek / Collector // BISHOP // *Dolichoctis / striata* S-G. / det.Darl.'66"; 1 ♀, "NEW GUINEA: NE. / Finisterre Range / Saidor: Gabumi / Vill. VI-24-30-'58 // W. W. Brandt / Collector // BISHOP // *Dolichoctis / striata* S-G. / det.Darl.'66"; 3 ♂♂, "NEW GUINEA (NE) / Lae, 26.XI.1961 / J. Sedlacek // *Dolichoctis / striata* S-G. / det.Darl.'66"; 1 ♀, "NEW GUINEA (NE) / Lae, sea level / July 26, 1955 // J. L. Gressitt / Collector // Borrowed fr. / Bishop Mus. // *Dolichoctis / striata* S-G. / det.Darl.'66"; 1 ♀, "NG, LAE, 10m / 5.VII.61 // J.&M. Sedlacek / Collectors // BISHOP // *Dolichoctis / striata* S-G. / det.Darl.'66"; 1 ♂, 1 ♀, "New Guinea / Lae, Huon R. / 16.4.1969 // J. Sedlacek / Collector // BISHOP MUS. // *Dolichoctis / striata* Schmidt-Goebel / det. G.E. Ball, 1989"; 1 ♀, "New Guinea / Lae / 6.II.1984 // J. Sedlacek / Collector // BISHOP MUS. // *Dolichoctis / striata* Schmidt-Goebel / det. G.E. Ball, 1989"; 1 ♀, "New Guinea NE / Lae, Singunwa R / 147°10'E 6°46'S / 20m, 16.IV.1966 // Pri. Forest // O.R. Wilkes / Light Trap / BISHOP MUS. // *Dolichoctis / striata* S-G. / det.Darl.'66"; 1 ♂, "NEW GUINEA (NE) / Bubis, Markham / V. 50 m. / Sept. 30 1955 // J. L. Gressitt / Collector // Borrowed fr. / Bishop Mus. // *Dolichoctis / striata* S-G. / det.Darl.'66"; 1 ♀, "NEW GUINEA: NE / Bulolo R. 680m / 2.2.1969 // J. Sedlacek / Collector // BISHOP MUS. // *Dolichoctis / striata* Schmidt-Goebel / det. G.E. Ball, 1989"; 1 ♀, "NEW GUINEA: NE / Wau, Bulolo R. / 900-1100 m / 25.IX.1965 // J. Sedlacek / Collector // BISHOP MUS. // *Dolichoctis / striata* Schmidt-Goebel / det. G.E. Ball, 1989"; 1 ♀, "NEW GUINEA (NE) / Wau, Upper Jimi V. / 840 m. VII-17-'55 // J. L. Gressitt / Collector // Borrowed fr. / Bishop Mus. // *Dolichoctis / striata* S-G. / det. Darl.'66"; 1 ♂, "NEW GUINEA: NE / Wau, 1200-1300m / 15.VIII.1965 // J. Sedlacek / Collector // BISHOP MUS. // *Dolichoctis / striata* Schmidt-Goebel / det. G.E. Ball, 1989"; 1 ♀, "New Guinea / Wau, 1200m / 4.I.1966 // J&M.Sedlacek / Collectors // BISHOP // *Dolichoctis / striata* Schmidt-Goebel / det. G.E. Ball, 1989"; 1 ♀, "NEW GUINEA: NE / Wau, Morobe Distr. / Mt. Missim, 1100 m / 16.X.1961 // J&M.Sedlacek / Collectors // BISHOP // *Dolichoctis / striata* S-G. / det.Darl.'66"; 1 ♂, "NEW GUINEA: NE / Wau, Morobe Distr. / Mt. Missim, 1050 m / 30.IX.1961 // J&M.Sedlacek / Collectors // BISHOP // *Dolichoctis / striata* S-G. / det.Darl.'66"; 1 ♂, 1 ♀, "NEW GUINEA (NE) / Wau, Morobe Distr. / 1200m, 15.XII.1961 // J. Sedlacek // G. Monteith / Collector // BISHOP // *Dolichoctis / striata* SM. / det. Darl. '69"; 1 ♂, "NEW GUINEA (NE) / Wau, Morobe

Distr. / 1050 - 1100m / 15.XII.1961 // J. Sedlacek / Collector / BISHOP // *Dolichoctis / striata* SM. / det. Darl. '69"; 1 ♂, "New Guinea: NE / Kuper Ra. / 200-700m / 24.I.1969 // J. Sedlacek / Collector / BISHOP MUS. // *Dolichoctis / striata* Schmidt-Goebel / det. G.E. Ball, 1989"; 1 ♂, "NEW GUINEA: NE / Muming; 600 m / 9-10. II.1962 // J. Sedlacek / Collector / BISHOP MUS. // *Dolichoctis / striata* Schmidt-Goebel / det. G.E. Ball, 1989"; 1 ♂, 3 ♀, "N.Guinea:NE / Garaina, 830m / 13-15.I.1958 // J&M.Sedlacek / Collectors / BISHOP // *Dolichoctis / striata* Schmidt-Goebel / det. G.E. Ball, 1989"; 2 ♀♀, "N.Guinea:NE / Garaina, 800m / 15.I.1958 // J&M.Sedlacek / Collectors / BISHOP // *Dolichoctis / striata* Schmidt-Goebel / det. G.E. Ball, 1989"; 1 ♀, "N.Guinea:NE / Garaina, 800m / 4.I.1958 // J&M.Sedlacek / Collectors / BISHOP // *Dolichoctis / striata* Schmidt-Goebel / det. G.E. Ball, 1989"; 1 ♂, "NEW GUINEA: NE / Mamai Plt'n / nr. Port Glasgow / 60m, 16.II.1965 // R. Straatmann / Collector / BISHOP MUS. // *Dolichoctis / striata* Schmidt-Goebel / det. G.E. Ball, 1989"; 1 ♀, "PNG: NEW GUINEA: NE / S Highlands Distr. / Lake Kutubu: Tuguri / 1000m, 7-9-II.1978 // J. L. Gressitt / Collector // *Dolichoctis / striata* / Schmidt-Goebel / det. G. Ball, 1989"; 2 ♂♂, "PAPUA: Fly R. / Oisobip, 400m / 600m, VII.69 // J&M.Sedlacek / Collectors / BISHOP // *Dolichoctis / striata* Schmidt-Goebel / det. G.E. Ball, 1989"; 2 ♂♂, "NE New Guinea: / Umboi I. c8km / WNW Lab Lab. / 300m, 8-9.II.1967 // G. A. Samuelson / Light Trap / BISHOP // *Dolichoctis / striata* Schmidt-Goebel / det. G.E. Ball, 1989"; 1 ♂, "NE New Guinea: / Umboi I. Lab Lab. / 0-10m, 6-7.II.1967 // G. A. Samuelson / Collector / BISHOP // *Dolichoctis / striata* Schmidt-Goebel / det. G.E. Ball, 1989"; 1 ♂, "NEW GUINEA: NETH. / Waris, S. of / Hollandia, 450-500m / VIII-24-31-1959 // T. C. Maa / Collector / BISHOP // Borrowed fr. / Bishop Mus. // *Dolichoctis / striata* S-G. / det. Darl.'66"; 1 ♂, "NEW GUINEA: NETH. / HOLLANDIA AREA / W. Sentani, Cyclops / Mts., 150-250 m. / June 22, 1959 // Sweeping // T. C. Maa / Collector / BISHOP // Borrowed fr. / Bishop Mus. // *Dolichoctis / striata* S-G. / det. Darl.'66"; 1 ♂, "NEW GUINEA: NETH. / HOLLANDIA AREA / W. Sentani, Cyclops / Mts., 150-250 m. / June 16, 1959 // J. L. Gressitt / Collector // Borrowed fr. / Bishop Mus. // *Dolichoctis / striata* S-G. / det. Darl.'66"; 1 ♂, 1 ♀, "NEW GUINEA: NETH. / Sentani, SW Cyclops / 100m. / VI-15-1959 // J. L. Gressitt / Collector // Borrowed fr. / Bishop Mus. // *Dolichoctis / striata* S-G. / det. Darl.'66"; 1 ♀, "NEW GUINEA (NW) / Ifar, Cyclops Mts. / 400-800m, 7-9-II.62 // J. Sedlacek / Collector / BISHOP // *Dolichoctis / striata* S-G. / det. Darl.'66"; 9 ♂♂, 1 ♀, "NEW GUINEA (NW) / Nabire, S. Geelvink / Bay, 5 - 50 m. / 25.VIII.-2.IX.1962 // J. Sedlacek / Collector / BISHOP // *Dolichoctis / striata* S-G. / det. Darl.'66"; 2 ♂♂, 1 ♀, "NEW GUINEA (NW) / Nabire, S. Geelvink / Bay, 5 - 30 m. / 2-9.VII.1962 // J. Sedlacek / Collector / BISHOP // *Dolichoctis / striata* S-G. / det. Darl.'66"; 2 ♂♂, "NEW GUINEA (NW) / Nabire, S. Geelvink / Bay, 10-40 m. / 1-4. IX.1962 // J. Sedlacek / Collector / BISHOP // *Dolichoctis / striata* S-G. / det. Darl.'66"; 1 ♂, "NEW GUINEA (NW) / Nabire, S. Geelvink / Bay, 10-15 m. / 1-5. IX.1962 // J. Sedlacek / Collector / BISHOP // *Dolichoctis / striata* S-G. / det. Darl.'66"; 1 ♀, "NEW GUINEA (NW) / Nabire, S. Geel- / vink Bay, 1-20m / 3. VII.1962 // Sugar / cane // J. L. Gressitt / Collector / BISHOP MUSEUM // *Dolichoctis / striata* Sm. / det. Darl. '6"; 1 ♂, "NEW GUINEA (NW) / Nabire, 5 -50 m. / 25.VIII.-2.IX.1962 // Light Trap / J. Sedlacek / BISHOP // *Dolichoctis / striata* S-G. / det. Darl.'66"; 1 ♂, "NG, NABIRE / 10m, VIII.62 // J. Sedlacek / Collector / BISHOP // *Dolichoctis / striata* S-G. / det. Darl.'66"; 1 ♂, 1 ♀, "NEW GUINEA: NETH. / VOGELKOP, Fak Fak / S.coast of Bomberai / 10-100m., VI-12-'59 // Sweeping // T. C. Maa / Collector / BISHOP // Borrowed fr. / Bishop Mus. // *Dolichoctis / striata* S-G. / det. Darl.'66"; 1 ♀, "NEW GUINEA: NETH. / VOGELKOP: Bomberai / 700-900m., VI-3-'59 // Sweeping // J. L. Gressitt / Collector // *Dolichoctis / striata* S-G. / det. Darl.'66"; 1 ♀, "NEW GUINEA (neth) / Biak I. (SE) 15 m. / Aug. 22, 1955 // Secondary / Forest // J. L. Gressitt / Collector // Borrowed fr. / Bishop Mus. // *Dolichoctis / striata* S-G. / det. Darl.'66".

Dolichoctis kitchingi sp. n.

Additional paratype

1 ♂, "S-THAILAND. Phang-nga Prov. Lamru distr., 6km NE Lam Kaen (white banana waterfall) 08°37.324N, 98°19.363E 75m, 13.VII.2012, leg. A. Weigel PL" (NME).

Genus *Perigona* Castelnau

(all specimens from BMH)

Perigona (s. str.) *subcordata* Putzeys

Additional examined material (14 ex.)

PNG: "NEW GUINEA: NE Wau, Bulolo R. 850-900 m 24.VIII.1965 / J&M. Sedlacek Collectors BISHOP / *Perigona astrolabica* Csiki det. G.E. Ball, 1989"; "NEW GUINEA (NE) Wau, Upper Jimi V. 840 m. III-18-'56 / J.L. Gressitt Collector / *Perigona astrolabica* Ck. det. Darl.'66"; "NEW GUINEA (NE) Wau, Morobe Distr. 1150 m. 7.XI.1961 / J&M. Sedlacek Collectors BISHOP / *Perigona astrolabica* Ck. det. Darl.'66";

“NEW GUINEA (NE) Wau, Morobe Distr. 1700 m. 7.II.1963 / J&M. Sedlacek Collectors BISHOP / *Perigona astrolabica* Ck. det. Darl.’66”; “NEW GUINEA: NE Wau, Nami Ck. 1700 m 17.V.1965 / J. Sedlacek Collector BISHOP / *Perigona astrolabica* Csiki det. G.E. Ball, 1989”; “NEW GUINEA: NE Wau, 1150-1600m 9.II.1968 / J. Sedlacek Collector BISHOP / *Perigona astrolabica* Csiki det. G.E. Ball, 1989”; “Bulolo, G.Pines 600m, 19.2.62 / J. Sedlacek Collector BISHOP / *Perigona astrolabica* Ck. det. Darl.’66”; “NEW GUINEA: NE Garaina, 550-700m 16.I.1968 / J&M. Sedlacek Collectors BISHOP / *Perigona astrolabica* Csiki det. G.E. Ball, 1989”; “NEW GUINEA: NE Garaina, 830m 13-15.I.1968 / J&M. Sedlacek Collectors BISHOP / *Perigona astrolabica* Csiki det. G.E. Ball, 1989”; “N.Guinea: NE Kaindi-Nami 1700m 16.I.69 / J. Sedlacek Collector BISHOP / *Perigona astrolabica* Csiki det. G.E. Ball, 1989”; “NEW GUINEA: NE Finisterre Range Saidor: Gabumi Vill., VII-1-21-1958 / W. W. Brandt Collector BISHOP / *Perigona astrolabica* Ck. det. Darl.’66”. – **PI**: “NEW GUINEA: (NW) Ifar, Cyclops Mts. 450-500m, 9.IX.1962 / J. Sedlacek Collector BISHOP / *Perigona astrolabica* Ck. det. Darl.’66”.

Perigona (Trechicus) litura (Perroud & Montrouzier, 1864)

Additional examined material (7 ex.)

PNG: “NE New Guinea: Umboi I. 1km N Awelkom 600m, 21-28.II.1967 / G.A. Samuelson at Light BISHOP / *Perigona (Trechicus) ludovici* Csiki det. G.E. Ball, 1989”; “NE New Guinea: Umboi I. c.8km WNW Lab Lab. 300m, 8-19.II.1967 / G.A. Samuelson Light Trap BISHOP / *Perigona (Trechicus) ludovici* Csiki det. G.E. Ball, 1989”. – **PI**: “NEW GUINEA: NETH Bodem, 100m, 11km SE of Oerberfaren July 7-17, 1959 / T. C. Maa Collector / *Perigona ludovici* Csk. det. Darl.’66 / *Perigona (Trechicus) ludovici* Csiki det. G.E. Ball, 1989”.

Perigona (Trechicus) erimae Csiki

Additional examined material (9 ex.)

PNG: “NE New Guinea: Umboi I. 1km N Awelkom 600m, 21-28.II.1967 / G.A. Samuelson at Light BISHOP / *Perigona erimae* Csiki det. G.E. Ball, 1989”; “NEW GUINEA: PAPUA Owen Stanley Range Goilala: Tapini 975m, XI-16-25-1957 / W.W. Brandt Collector BISHOP / *Perigona erimae* Csk. det. Darl.’66 / *Perigona (Trechicus) erimae* Csiki det. G.E. Ball, 1989”; “NEW GUINEA: (NE) Wau, Morobe Distr. 1200m, 7.IX.1961 / J. Sedlacek Collector BISHOP / *Perigona erimae* Csk. det. Darl.’66 / *Perigona (Trechicus) erimae* Csiki det. G.E. Ball, 1989”; “NEW GUINEA: PAPUA Kokoda 28-29.III.1956 / Light Trap J. L. Gressitt / *Perigona erimae* Csk. det. Darl.’66 / *Perigona (Trechicus) erimae* Csiki det. G.E. Ball, 1989”. – **PI**: “NEW GUINEA (NW) River Tor (mouth) 4km E of Hol Maffen, 19.VII.’59 / T. C. Maa Collector / *Perigona erimae* Csk. det. Darl.’66 / *Perigona (Trechicus) erimae* Csiki det. G.E. Ball, 1989”.

Perigona (Trechicus) drumonti sp. n.

Additional paratypes

1 ♂, 2 ♀♀, “NE New Guinea: Umboi I. c.8km WNW Lab Lab. 300m, 8-19.II.1967 / G.A. Samuelson Light Trap BISHOP / *Perigona (Trechicus) erimae* Csiki det. G.E. Ball, 1989”; 1 ♂, “New Guinea NE Simbai Bismark Range 8°44’S 144°30’E 1600 m 26.V.66 / J.L. Gressitt Light Trap / borrowed fr. Bishop Mus. / *Perigona erimae* Csk. det. Darl.’66 / *erimae* / *Perigona (Trechicus) erimae* Csiki det. G.E. Ball, 1989”.

Perigona (Trechicus) macrops sp. n.

Additional paratypes

1 ♂, “NEW GUINEA: PAPUA Kokoda 28-29.III.1956 / Light Trap J. L. Gressitt / *Perigona ludovici* Csk. det. Darl.’66 / cf. *ludovici* / *Perigona (Trechicus) ludovici* Csiki det. G.E. Ball, 1989”; 1 ♂, “NEW GUINEA: SE Mamai Pltn. E of Port Glasgow, 150m 5.II.1965 / R. Straatman Light Trap BISHOP / *Perigona (Trechicus) ludovici* Csiki det. G.E. Ball, 1989”.

Perigona (Trechicus) ludovici ludovici Csiki

Additional examined material (1 ex.)

PNG: 1 ♀, “PAPUA: FLY R. Kiunga, 86m August 1960 / J. Sedlacek Collector BISHOP / *Perigona (Trechicus) ludovici* Csiki det. G.E. Ball, 1989”.

Perigona (Trechicus) ludovici dobodurae subsp. n.**Additional paratype**

1 ♂, "NEW GUINEA: PAPUA Kokoda 28-29.III.1956 / Light Trap J. L. Gressitt / *Perigona ludovici* Csk. det. Darl.'66 / *Perigona (Trechicus) ludovici* Csiki det. G.E. Ball, 1989".

Additional examined material (doubtfully attributed to this subspecies) (1 ex.)

PNG: 1 ♀, "NEW GUINEA: SE Mamai Pltn. E of Port Glasgow, 150m 5.II.1965 / R. Straatman Light Trap BISHOP / *Perigona (Trechicus) ludovici* Csiki det. G.E. Ball, 1989".

Perigona (Trechicus) proxima sp. n.**Additional paratype**

1 ♂, "NEW GUINEA: NE Finisterre Range Saidor: Matoko Vill. IX-6-24-'58 / W.W. Brandt Collector BISHOP / Boorowed fr. Bishop Mus. / *Perigona lebioides* Csk. det. Darl.'66".

Additional examined material (doubtfully attributed to this subspecies) (2 ex.)

PNG: 1 ♀, "New Guinea SE Popondetta 25m VI.66 / Shanahan-Lippert Ligh Trap Bishop Museum / *Perigona lebioides* Csk. det. Darl.'66". – PI: 1 ♀, "NEW GUINEA (NW) River Tor(mouth) 4km E of Hol Maffen, 19.VII.'59 / T. C. Maa Collector / *Perigona lebioides* Csk. det. Darl.'66".

Perigona (Trechicus) lutea sp. n.

Figs 1, 2, 4

Type material examined

Holotype: ♂, "NEW GUINEA Morobe Distr. Wau 17.VIII.1972 G.G.E. Scudder / 1800H-1900H M.V. Light Trap G.G.E. Scudder / BISHOP MUSEUM ACCESSION 1979.05 / *Perigona (Trechicus) ludovici* Csiki det. G.E. Ball, 1989" (BMH).

Etymology

The name refers to the unicolourous yellow surface.

Diagnosis

A comparatively large species (in subgenus) with rather narrow subapical channel and with a slightly oval-shaped structure in the internal sac that is composed of several concentric rings; distinguished from the related *P. irregularis* n. sp. by angulate but not rectangular basal angles of the prothorax, less depressed eye with much shorter orbit, and narrower aedeagus with an oval-shaped instead of circular concentric structure; and from *P. rufocastanea* n. sp. by paler colour, angulate instead of obtuse basal angles of the prothorax, and longer antenna.

Description

Measurements. Body length: 4.0 mm; width: 1.65 mm. Ratios. Width/length of pronotum: 1.34; width of widest diameter/base of pronotum: 1.32; width apex/base of pronotum: 0.98; width pronotum/head: 1.36; length/width of elytra: 1.45.

Colour (Fig. 2). Uniformly pale reddish, including clypeus, labrum, and mandibles. Posterior part of head faintly darker. Palpi, antenna, and legs bright yellow, tibiae very slightly darker than femora.

Head (Fig. 4). Moderately large, dorsal surface fairly depressed. Eye rather large, laterad moderately produced; orbit short, oblique to almost transversal. Labrum elongate, in middle slightly sinuate; mandibles elongate, straight; palpi elongate, maxillary palpus comparatively sparsely pilose. Mentum with acute, unidentate tooth and two elongate setae. Antenna comparatively elongate, median antennomeres c. 1.2 x as long as wide. Posterior supraorbital seta situated about at posterior margin of eye. Surface apparently impunctate, with superficial, isodiametric microreticulation, glossy.

Pronotum (Fig. 4). Moderately wide, widest well in front of middle, dorsal surface fairly depressed. Base rather wide. Apex very slightly excised; apical angles slightly protruded but obtuse at tip; lateral margins convex, near base oblique and almost straight; basal angles about 110°, angulate and only at the very tip slightly obtuse; base in middle straight, laterally but slightly oblique. Apex and middle of base not margined, lateral parts of base margined. Lateral margin and channel narrow, little widened and explanate basad. Both transverse sulci barely recognizable, median line distinct, slightly impressed, abbreviated on both ends. Anterior marginal seta situated behind apical fourth, posterior marginal seta situated at basal angle. Extremely fine and sparse punctures barely recognizable even at high magnification, disk with extremely and superficial traces of transverse lines, towards apex and base with more distinct, about isodiametric microreticulation; surface glossy.

Elytra (Fig. 2). Rather elongate, barely widened apicad, widest about at middle, dorsal surface rather depressed. Humerus wide, slightly produced but widely rounded, lateral margins almost parallel-sided in middle, apex regularly convex, slightly incurved towards suture. Lateral margin narrow, behind humerus rather distinctly denticulate and sparsely setulose; subapical sulcus comparatively narrow. Four median striae faintly but irregularly impressed in basal two thirds, barely punctate. Anterior discal puncture situated behind basal third, the median puncture situated at the apical two fifths, the third puncture far removed from the apex. Lateral margins with sparse and very short pilosity, the subapical channel rather sparsely pilose. Surface with fine and very sparse punctures which are only visible at very high magnification, almost devoid of microsculpture, Very glossy.

Male genitalia (Fig. 1). Genital ring large, moderately wide, almost parallel-sided, with moderately wide, asymmetric, oblique apex and with narrow base. Aedeagus rather narrow, moderately widened in middle; lower surface almost straight. Apex fairly elongate and moderately narrow, slightly triangular, with obtuse tip, slightly asymmetric. Internal sac in apical half with a narrow, elongate, sclerotized rod at bottom and a slightly oval-shaped structure composed of many narrow, concentric, sclerotized rings, with additional small sclerotized rods in the apical half. Both parameres large and wide, with wide, triangularly convex apex.

Female gonocoxites. Unknown.

Variation. Unknown.

Distribution

North-eastern Papua New Guinea. Known only from the type locality.

Collecting circumstances

The holotype was collected at rather high altitude in a light trap.

Relationships

In certain character states, e.g. relatively large body size, pale colour, elongate antenna, relatively narrow subapical marginal channel, and shape of aedeagus, this species is fairly similar to *P. irregularis* sp. n. and may represent the nearest relative of that species.

Perigona (Trechicus) striatipennis sp. n.

Figs 3, 5

Type material examined

Holotype: ♀, "NE New Guinea: Umboi I. 1km N Awelkom 600m, 21-28.II.1967 / G.A.Samuelson Light Trap BISHOP / *Perigona (Trechicus) erimae* Csiki det. G.E. Ball, 1989" (BMH).

Additional material examined (1 ex.)

1 ♀, defect, head and prothorax missing, same data (BMH).

Etymology

The name refers to the distinctly and almost completely striate elytra.

Diagnosis

A medium sized species (in subgenus) with wide subapical channel and with reddish humeral area; distinguished from similarly shaped or coloured species by the depressed elytra, well impressed and almost complete striae, and angulate basal angles of the pronotum.

Description

Measurements. Body length: 3.3 mm; width: 1.5 mm. Ratios. Width/length of pronotum: 1.48; width of widest diameter/base of pronotum: 1.32; width apex/base of pronotum: 1.25; width pronotum/head: 1.23; length/width of elytra: 1.28-1.30.

Colour (Fig. 3). More or less dark reddish-piceous, elytra with more or less extended pale reddish base. Clypeus, labrum, and mandibles dark reddish, palpi, antenna, and legs dirty yellow to brownish.

Head (Fig. 5). Large, dorsal surface fairly depressed. Eye large, laterad rather protruded; orbit short, slightly oblique but almost transversal. Labrum in middle slightly sinuate; mandibles elongate, straight; palpi elongate, maxillary palpus comparatively sparsely pilose. Mentum with acute, unidentate tooth and two elongate setae. Antenna comparatively short, median antennomeres about as long as wide. Posterior supraorbital seta situated in front of posterior margin of eye. Surface with extremely fine and sparse punctures which are only visible at very high magnification, without microreticulation but with very fine isodiametric to slightly transverse, superficial microreticulation on neck, very glossy.

Pronotum (Fig. 5). Rather wide, widest slightly in front of middle, dorsal surface fairly depressed. Base rather narrow. Apex very slightly excised; apical angles slightly protruded but obtuse at tip; lateral margins in apical

two thirds convex, in basal third oblique and straight; basal angles about 110° , angulate and only at the very tip slightly obtuse; base straight in middle, laterally moderately oblique. Apex and middle of base not margined, lateral parts of base faintly margined. Lateral margin and channel in anterior half narrow, in basal half wide and explanate. Both transverse sulci barely recognizable, median line distinct, slightly impressed, abbreviated on both ends. Anterior marginal seta situated at apical sixth, posterior marginal seta situated at basal angle. Extremely fine and sparse punctures barely recognizable even at high magnification, disk with very fine and superficial traces of transverse lines, very glossy.

Elytra (Fig. 3). Short and wide, distinctly widened apicad, widest slightly behind middle, dorsal surface rather depressed. Humerus wide, slightly produced but widely rounded, lateral margins slightly convex and oblique, apex regularly convex, slightly incurved towards suture. Lateral margin rather narrow, behind humerus extremely faintly denticulate and sparsely setulose; subapical sulcus wide. Striae well impressed and distinctly punctate-crenulate; at least six striae distinct, the 7th very faint. The anterior discal puncture situated at basal third, the median puncture slightly behind middle, the third puncture far removed from the apex. Lateral margins with sparse and very short pilosity, the subapical channel moderately densely pilose. Intervals apparently without punctures, with very superficial traces of microreticulation, which is composed of fine transverse lines, very glossy.

Male genitalia. Unknown.

Female gonocoxites. As in *P. drumonti* sp. n.

Variation. Little noted; in the holotype the base of the elytra is more widely reddish.

Distribution

Umboi Island, north of mainland Papua New Guinea. Known only from the type locality.

Collecting circumstances

Both specimens were collected in a light trap at medium altitude.

Relationships

Because of the yet unknown male genitalia the relationships of this species remain uncertain.

Recognition

To insert the new species into the key to the New Guinean-Sulawesian-Moluccan species follow on to couplet 42. (*Trechicus*). For better comparison with the key in the revision figures from the revision are included as **Rev. fig.**

For *P. lutea* sp. n. find couplet 43. which may be altered as following:

43. Body size larger, >4.0 mm; colour yellow to reddish-castaneous **and** eyes but moderately large and laterad moderately protruded (Figs 2, 4; **Rev. figs** 130, 131, 150, 151); aedeagus either with a large, circular structure composed of many narrow, concentric, slightly sclerotized rings (Fig. 1; **Rev. fig.** 50), or unknown..... (44)
- Body size smaller, <3.7 mm: colour usually dark brown to black; if specimen rather large and dark castaneous, eyes very large and laterad markedly protruded (**Rev. figs** 114, 148, 149); aedeagus variously shaped..... (45)
44. Pronotum with distinct prebasal excision, basal angles rectangular (**Rev. fig.** 150); elytral striae distinctly impressed and rather coarsely punctate, intervals with distinct transverse microreticulation; median antennomeres considerably longer than wide (**Rev. fig.** 130); aedeagus in middle wider, with shorter and wider basal part; internal sac with a circular structure composed of concentric rings (**Rev. fig.** 56). Papua New Guinea.....*irregularis* sp. n.
- Pronotum without prebasal excision (Fig. 4; **Rev. fig.** 151); elytral striae barely impressed and finely punctate, intervals with extremely superficial, barely recognizable microreticulation; aedeagus either in middle narrower, with longer and narrower basal part, and internal sac with a more oval-shaped structure composed of concentric rings (Fig. 1), or aedeagus unknown.....(44a)
- 44a. Pronotum with angulate basal angles, with wider apex (Fig. 4); median antennomeres perceptibly longer than wide; colour yellowish (Fig. 2); internal sac with a slightly oval-shaped structure composed of concentric rings (Fig. 1). Papua New Guinea.....*lutea* sp. n.
- Pronotum with obtuse basal angles, with narrower apex (**Rev. fig.** 151); median antennomeres about as long as wide; colour reddish-castaneous (**Rev. fig.** 131); aedeagus unknown. Papua Indonesia
.....*rufocastanea* sp. n.

For *P. striatipennis* sp. n. find couplet 47. which may be altered as following:

47. Elytra usually uniformly black, more rarely dark castaneous; aedeagus, when known, without a circular structure composed of many narrow, concentric, sclerotized rings (**Rev.** figs 39-46)..... (48)
- Elytra with more or less distinctly paler humeral area; aedeagus with a circular structure composed of many narrow, concentric, sclerotized rings (**Rev.** figs 53-55), or unknown; when unknown, elytra distinctly and almost completely striate (Fig. 3) (58)

Then follow on to couplet 58. which may be altered as following:

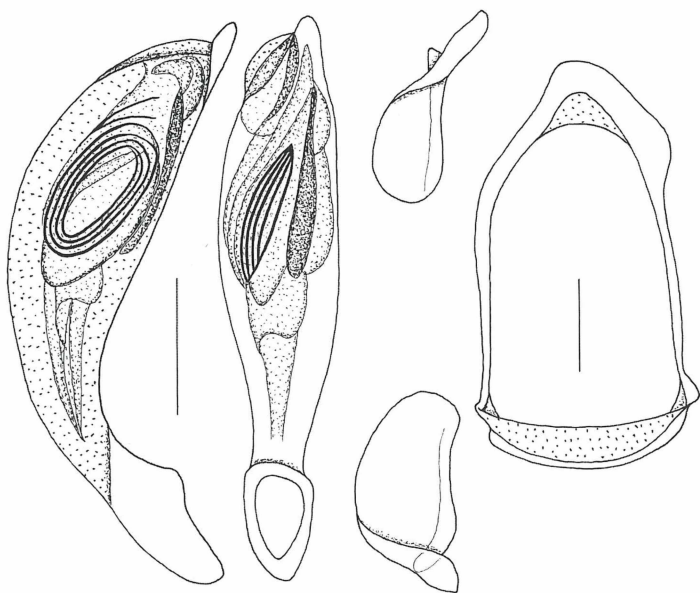
58. Pronotum narrower as compared with head, ratio width of pronotum/width of head <1.20 (**Rev.** fig. 175); elytra rather depressed on disk, at least the inner three striae distinctly impressed (**Rev.** fig. 128); aedeagus very compact, with markedly upturned apex (**Rev.** fig. 54). Australia: n. Queensland, e. Papua New Guinea *dorsata* Darlington, 1964
- Pronotum wider as compared with head, ratio width of pronotum/width of head >1.23; elytra either more convex on disk **and** striae barely impressed (**Rev.** figs 127, 129) **and** aedeagus less compact, with not or less upturned apex (**Rev.** figs 53, 55), **or** elytra depressed with distinct and almost complete striae (Fig. 3), and aedeagus unknown..... (59)
59. Elytra depressed with distinct and almost complete striae (Fig. 3); body size larger, length 3.3 mm; aedeagus unknown. Papua New Guinea: Umboi Is..... *striatipennis* sp. n.
- Elytra more convex with barely impressed striae (**Rev.** figs 127, 129); body size smaller, length < 3.0 mm; aedeagus with not or barely upturned apex (**Rev.** figs 53, 55). e. mainland Papua New Guinea, w. Papua Indonesia (59a)
- 59a. Smaller species, length 2.5 mm; eyes smaller and more depressed; elytra shorter and wider, ratio length/width 1.35 (**Rev.** fig. 127); aedeagus less compact, less wide in middle, with longer, not upturned apex (**Rev.** fig. 53). e. Papua New Guinea *subrufa* sp. n.
- Larger species, length >2.7 mm; eyes larger and laterad more protruded; elytra longer and narrower, ratio length/width >1.38 (**Rev.** fig. 129); aedeagus more compact, wider in middle, with shorter, slightly upturned apex (**Rev.** fig. 55). w. Papua Indonesia, Japen Is., Waigeo Is., Salawati Is..... *rubricincta* sp. n.

Remarks

This supplement corroborates the opinion expressed in the *Perigona* revision that even in New Guinea additional species still can be expected. In this connection the occurrence of two quite similar, very distinct species (*P. irregularis* and *P. lutea*) in the same area, the Morobe Province, is worth noting. It intensifies the question how so many very similar species can live together and in which way they compete, or avoid competition.

Acknowledgements

My thanks are due to M. Hartmann (Erfurt) and S. Myers (Honolulu) for the kind loan of the important material.



1

Fig 1. *Perigona lutea* sp. n. Male genitalia: aedeagus, left side, lower surface, left and right parameres, genital ring. Scale bars: 0.25 mm.

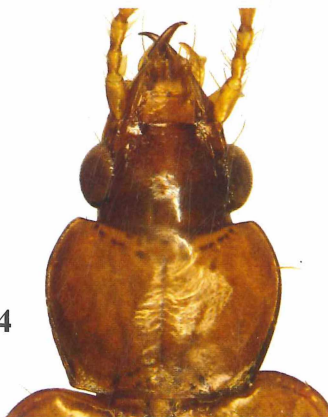


2

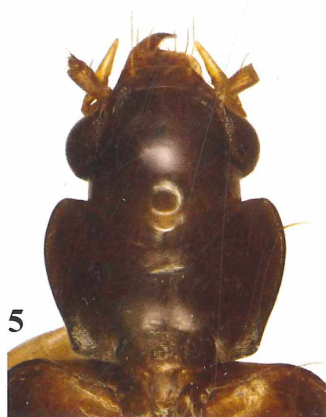


3

Figs 2-3. Habitus. Body length in brackets. (2) *Perigona lutea* sp. n. (4.0 mm). (3) *P. striatipennis* sp. n. (3.3 mm).



4



5

Figs 4-5. Head and pronotum. (4) *Perigona lutea* sp. n. (5) *P. striatipennis* sp. n.

ZOBODAT - www.zobodat.at

Zoologisch-Botanische Datenbank/Zoological-Botanical Database

Digitale Literatur/Digital Literature

Zeitschrift/Journal: [Entomologische Blätter](#)

Jahr/Year: 2013

Band/Volume: [109](#)

Autor(en)/Author(s): Baehr Martin

Artikel/Article: [Supplement to "The species of the genus *Perigona* Castelnau from New Guinea, Sulawesi, Halmahera, and Australia, and of the *parvicollis-pygmaea*-lineage. \(Coleoptera, Carabidae, Perigonini\)" and to "The *Dolichoctis striata* complex \(Coleoptera, Carabidae, Lebiini\) 223-232](#)