

21. *Ephoria arenosa* Btlr. ♀
 22. " " f. *insularis* (nov.) ♂
 23. *Boarmia gorbatschevi* (sp. nov.) ♂
 24. *Itame fulvaria* Vill. *imperatoria* (subsp. nov.) ♂
 25. *Chiasma clathrata* L. *djakonovi* (subsp. nov.) ♂
 26. " " " " " " ♀
 27. *Aspilates formosaria* Ev. ab. *brunneata* (nov.) ♀
- Textfigur 1. *Abraxas grossulariata* L. Sexual-Armatur ♂
 " 2. *Abraxas heringi* m., Sexual-Armatur ♂.

Fauna sumatrensis.

(Beitrag Nr. 61).

Psyllidae.

By David L. Crawford, University of Hawai (Honolulu).

(with 1 Textfigure)

In a collection of *Psyllidae* (*Chermidae* of some authors) sent to me by Dr. E. Jacobson from Sumatra there are several previously known species represented and one new species which is of particular interest because of its possible relationship with a species which has become established in Hawaii.

Pauropsylla udei Rütbsaamen¹⁾: This easily recognized species, common throughout the old world tropics as gall-makers on *Ficus*, is represented by 6 specimens collected at Fort de Kock, by E. Jacobson, at 920 m elevation.

Paurocephala psylloptera Crawford²⁾: This widely distributed species is represented by 15 specimens collected at Fort de Kock, Sumatra, by E. Jacobson on *Ficus fistulosa* at 920 m elevation. Most of the specimens have the dorsal thorax brown with orange streaks and spots.

Macrohomotoma gladiatum Kuwayama³⁾: Six specimens of this species are in the collection, taken at Fort de Kock, Sumatra on *Ficus retusa* L. by E. Jacobson, some in February 1923 and one in 1924, at 920 m elevation.

This species was first located in Formosa, but subsequently has appeared in collections from Macao and the island of Larat.

Tenaphalara malayensis Crawford¹⁾: This Malay Peninsula species is also in Sumatra and Java, for two specimens are very similar to the Singapore specimens on which the species description was based. One of

¹⁾ Ent. Nachrichten Bd. XXV, p. 264, 1899 — Crawford, Philippine Journ. Science, Vol. 15, p. 145, 1919.

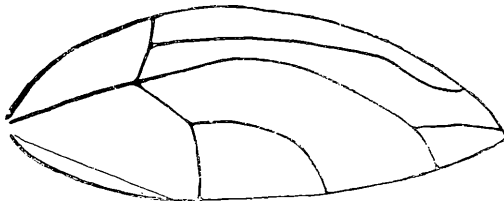
²⁾ Philippine Journ. Science, Vol. 8, p. 294, 1913.

³⁾ Trans. Sapporo Nat. Hist. Soc. Vol. II, p. 179, 1907. — Crawford, Proc. Haw. Ent. Soc. Vol. VI, Nr. 1, pp. 36—39, 1925.

these specimens is from Fort de Kock, taken by E. Jacobson in December, 1920, at an elevation of 920 m. The other specimen is from Samarang, Java, taken by E. Jacobson in 1910.

Megatrioza mallotica (n. sp.): A large species, body (to tip of folded wings) from 6 to 8 mm long; body 3 to 4 mm long; forewing 5 to 7 mm long. General color light ochreous brown, sometimes with slightly darker spots or streaks on thoracic dorsum; eyes and tips of antennae black.

Head somewhat declivous, with vertex about half as long as broad between eyes, clothed with long hairs; genal cones about half as long as vertex, small, subacute at apex; antennae about one and a half times



Megatrioza mallotica n. sp.

as long as width of head (including eyes). Thorax moderately broad, well arched, with an abundance of long hairs on dorsal surface. Legs long, hairy; hind tibiae with a small spur at base. Fore-

wings very long, acutely pointed, flavous in color; venation as shown in illustration; hind wings less than half as long as forewings, clear. Abdomen: Female genital segment moderately long, about half as long as width of forewing. Male anal valve with lateral wings long; forceps long and slender.

Fort de Kock, Sumatra (E. Jacobson), 3 females and 2 males, collected December 1920 at 920 m elevation. This species forms galls on *Mallotus philippinensis* (*Euphorbiaceae*).

In several respects this species resembles its Hawaiian relative *M. palmicola* Crawford, but is quite distinct, however.

Hyménoptères Sud-Américains du Deutsches Entomologisches Institut: *Terebrantia*.

Par le Dr. Jean Brèthes.

(Supplement.)

[In den Ent. Mitteil. XVI, 1927, p. 296—309 und 319—335, ist eine Arbeit von dem leider inzwischen verstorbenen Dr. J. Brèthes über *Terebrantia* publiziert, bei welcher leider auf p. 309 der Schlußteil der Beschreibung von *Distantella Fischeri* (n. sp.), ebenso wie der die Tribus *Mesostenini* behandelnde Teil durch ein Versehen des Setzers aus-

1) Philippine Journ. Sc. Vol. 15, p. 165, 1919.

ZOBODAT - www.zobodat.at

Zoologisch-Botanische Datenbank/Zoological-Botanical Database

Digitale Literatur/Digital Literature

Zeitschrift/Journal: [Entomologische Mitteilungen](#)

Jahr/Year: 1928

Band/Volume: [17_1928](#)

Autor(en)/Author(s): Crawford David L.

Artikel/Article: [Fauna sumatrensis. Psyllidae. 425-426](#)