

A New or Little Known Species of the Genus *Glypta* Grav.

By E. Ozols - Riga.

(With 1 plate.)

Glypta kawalli sp. n.

♀♂. Head narrowed behind the eyes: if seen from above, an imaginary line drawn between the hind margins of the eyes would form an angle of 45 with the profile of the tempora. The width of the genae bears a proportion to the width of the mandibles as 5 to 6. Ocelli very much protruding, spherical (a character this species has in common with *G. exophthalmica* Kriechb.).* Frons depressed, especially at the additional ocelli, and covered with transverse wrinkles. Between the latter the punctured, near the eyes smooth and shining, epistoma is well defined. Clypeus broadly rounded at fore margin, transversely raised in the middle, its fore-half covered with long hair. The rest of the head and the thorax covered with hair 2 or 3 times (depending of their respective position) shorter than those on the clypeus. Mandibular teeth strong, of almost equal length. Length of first antennal joint (scapus) equal to its width, the cutting out reaching to the middle of the joint. Epomia well defined, notauli replaced by shallow grooves, mesopleurae with speculum. Methathorax with sharply defined area media, area basalis (the former mostly not separated from the latter, only rarely with a weak bar between them), area postica, area externa and area dentipara. The costula ends at the fore-half of the lateral suture of the area media the latter, being one-half longer than wide. The structure of the surface of the areas rather inconstant: generally it is more or less smooth and without punctures in the area media, metathorax towards its periphery punctured more closely, and area postica with longitudinal wrinkles at the middle. Spiracles of the metathorax large, oval. Claws with several shortteeth at base. Abdomen with depressions, characteristic for the genus

* Schmiedeknecht, Opuscula Ichneumonologica B. III., p. 1211.

Glypta, coarsely punctate, the fifth and following segments smooth: first segment with two longitudinal ridges which divide it (in the middle part) into three equal parts when seen from above. Towards the base of the segment the ridges occupying two thirds of its length, diverge: between the ridges there is a shallow depression that deepens towards the base of the segment and becomes even with its surface towards the end. Ovipositor on the upper side with an excavation at the tip, which is peculiar also to other of the genus *Glypta*.

♀ black, legs uniformly red, tips of hind tibiae on a very short extension, not exceeding the width of the metatarsus, very slightly darker, base of tibia slightly paler. Mixillary and labial palpi, tegulae and stigma of wings reddish yellow. (In one ♀ the hind margins of second, third and fourth abdominal segments reddish brown).

♂ black, fore-half of clypeus reddish brown, tips of hind tibiae on a short extension black, the tarsae joints being also more darkly coloured than in the female; other characters as in the latter.

Note. This species is allied to *G. exophthalmica* Kriechb. (*Glypta exophthalmus* Kriechbaumer, ♀, Pimplinen-Studien, Entomologische Nachrichten H. vi. p. 85) a single specimen of which was found by this autor in Bayern near the lake Tegern on 14. VIII. 1854.

Glypta kawalli spec. nov. differs from the latter in the following characters:

G. exophthalmica Kriechb.

1. ... mit einem ziemlich schwach begrenzten oberen Mittelfelde
2. Der Hinterleib ist sehr fein längsgestrichelt,
3. pedibus rufis,
sticis apice nigris, basi summa
vix pallidioribus,

G. kawalli spec. nov.

- All five metathoracic areas distinctly bordered.
- Abdomen coarsely punctate and without any traces of fine lines.
- Legs of female coloured nearly uniformly.

I dedicate this species to the late H. Kawall, who was the first to investigate the Ichneumonid fauna of Latvia.

6 ♀♀ and 1 ♂ taken on the 18. VII. 1920. by me in northern Latvia on the banks of the Gauja river. They were flying at the leaves of *Petasites tomentosus*, growing on bare sand.

14 ♀♀ and 28 ♂♂ at the same place on 14. VII. 1925.

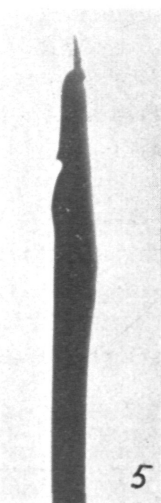
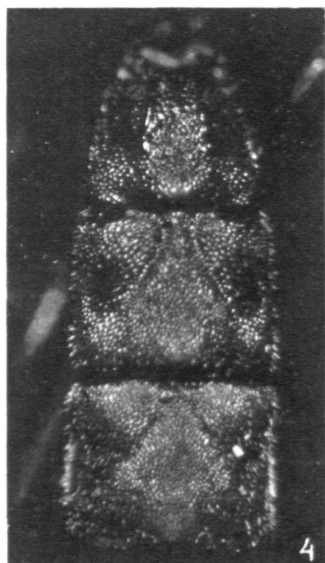
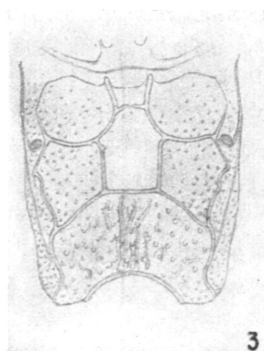
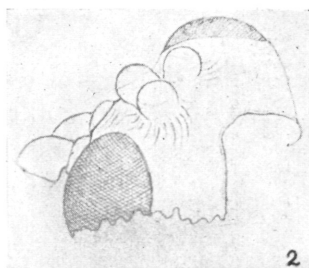
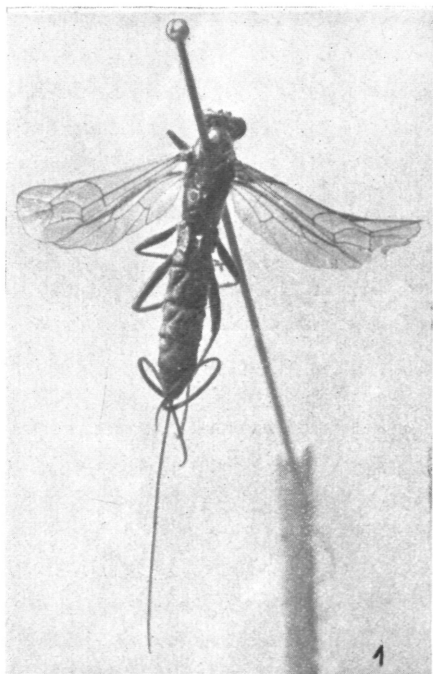
64 Ozols, A New or Little Known Species of the Genus *Glypta* Grav.

Exemples of measurements: ♀ — 12,9 + 12,0 (ovipositor),
12,5 + 10,8. ♂ — 11,8 mm.

Explanation of plate:

- 1 — *Glypta kawalli* sp. n.
 - 2 — Top of head.
 - 3 — Metathorax.
 - 4 — 1st — 3rd segments of the abdomen.
 - 5 — Apex of the terebra.
 - 6 — Fore and hind wings.
-

E. Ozols, Genus *Glypta* Grav.



ZOBODAT - www.zobodat.at

Zoologisch-Botanische Datenbank/Zoological-Botanical Database

Digitale Literatur/Digital Literature

Zeitschrift/Journal: [Konowia \(Vienna\)](#)

Jahr/Year: 1927

Band/Volume: [6](#)

Autor(en)/Author(s): Ozols Edgars

Artikel/Article: [A New or Little Known Species of the Genus Glypta Grav. 62-64](#)