

Mimolesterus gen.n., a new genus of Australian Cleridae (Coleoptera: Cleridae)

R. GERSTMEIER

Abstract

Mimolesterus gen.n., is proposed for the Australian clerid species *Olesterus ventralis* (WESTWOOD, 1852). Main distinguishing characters of the new genus are the open front coxal cavities and the cylindrical maxillary palpi, which both place this genus in an intermediate position between *Olesterus* SPINOLA, 1844, and *Pseudolesterus* MIYATAKE, 1968.

The revision of the genus *Olesterus* SPINOLA, 1844 (GERSTMEIER 1990) makes it necessary to establish a new genus for *Olesterus ventralis* (WESTWOOD, 1852), because this species has the front coxal cavities open and the maxillary palpi cylindrical, so that it could be assigned neither to *Olesterus* nor to *Pseudolesterus* MIYATAKE, 1968. *Olesterus* has the front coxal cavities open, too, but the maxillary palpi are securiform. *Pseudolesterus* has the maxillary palpi cylindrical, but the front coxal cavities are closed. Originally described as a species of the genus *Clerus* MÜLLER, 1764 (WESTWOOD 1852), *ventralis* was placed into the genus *Olesterus* by BLACKBURN (1900). SCHENKLING (1916) doubted that *ventralis* belongs to *Olesterus* and therefore it was marked with a question mark in the catalogue of CORPORAAL (1950). The supposition of MIYATAKE (1968) that *ventralis* could belong to *Pseudolesterus* must be disputed.

Mimolesterus gen.n.

Type species: *Clerus ventralis* WESTWOOD, 1852

Antennae: Broken, completely absent.
Original description of WESTWOOD (1852): "Labrum et antennae rufescentes, hae articulis tribus ultimis majoribus, ultimo ovali".

Head: Terminal segment of maxillary palpi cylindrical; terminal segment of labial palpi securiform; labrum bilobed; eyes V-shaped emarginate, finely faceted.

Prothorax: Front coxal cavities open behind.
Elytra: Humeral tubercles large, slightly raised, smooth, glossy; without tuft of hair.

Morphologically, *Mimolesterus* takes an intermediate position between *Olesterus* and *Pseudolesterus*.

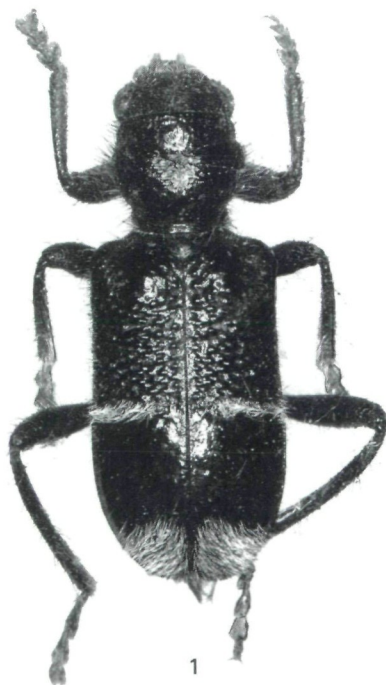


Fig. 1: *Mimolesterus ventralis* holotype ♀

Mimolesterus ventralis (WESTWOOD, 1852) comb.n.
(Figs 1 - 3)

WESTWOOD, 1852, p. 51 (*Clerus*); BLACKBURN 1900, p. 122 (*Olesterus*); SCHENKLING 1916, p. 222; MIYATAKE 1968, p. 2.

Holotype: ♀, Type, Westwood, Proc.Zool.Soc. 1852, p. 51, Coll. Hope Oxon; Second label not readable. Hope Entomological Collections, Oxford. Location according to original description: Hunter's River, Nova Hollandia [New South Wales].

Measurements: Length: 8.3 mm. Pronotum: Length: 1.86 mm, width: 2.06 mm; Elytra: Length: 5.48 mm, width: 3.01 mm.

Head: Including eyes slightly wider than apex of pronotum; black; irregularly and more or less coarsely wrinkled, dull, densely covered with long, blackish brown hairs; labrum bilobed, labrum and clypeus covered with long, white hairs; palpi light brown; terminal segment of maxillary palpi cylindrical; terminal segment of labial palpi securiform.

Pronotum: Wider than long, widest just in front of middle; with a slightly curved, conspicuous, transverse impression; with a conspicuous, longitudinal median groove; anterior part irregularly and confusely punctate, behind the transverse impression irregularly wrinkled; glossy; with long erect blackish brown hairs.

Scutellum: Transversely oval-shaped, black, with dense white pubescence.

Elytra: Compact, less than two times as long as wide, widest in posterior third; sutural angles rounded; with a narrow, transverse band of dense white hairs behind the middle; strongly wrinkled between base and this band of white hairs; posterior fifth with dense, brownish white pubescence; last fourth of surface smooth and glossy. Humeral tubercles large, slightly raised, smooth and glossy.

Legs: Femora black; protibia light reddish brown, only base black; anterior third of mesotibia black, posterior part light reddish brown; metatibia completely black; pro- and mesotibiae nearly straight, metatibia slightly curved. Tarsi of front and middle legs brown, tarsi of hind legs blackish brown.

Lower surface: Abdominal sternites blue-black; pygidium see fig. 2a, terminal abdominal sternite see fig. 2b; ovipositor see fig. 3.

Acknowledgements

I am greatly indebted to Mr. Christopher O'Toole and Prof. D.S. Smith (University of Oxford, Hope Entomological Collections) for the kind loan of the holotype. Dr. M. Baehr (München) revised the English manuscript.

Zusammenfassung

Die neue Gattung *Mimolesterus* gen.n. wird für die australische Cleridenart *Olesterus ventralis* (WESTWOOD, 1852) errichtet. Die wesentlichen Merkmale dieser neuen Gattung sind die hinten offenen Höhlen der Vorderhüften und die zylindrischen Endglieder der Maxillarpalpen. Aufgrund der äußeren Morphologie steht *Mimolesterus* zwischen *Olesterus* SPINOLA, 1844 und *Pseudolesterus* MIYATAKE, 1968.

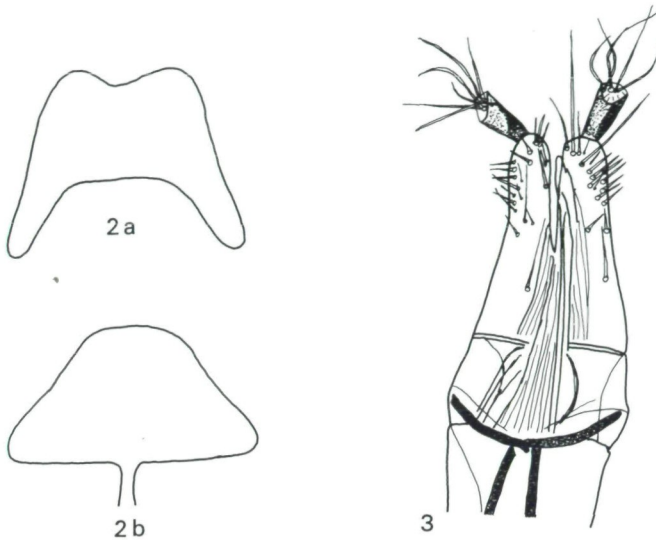


Fig. 2 - 3: *Mimolesterus ventralis*: 2a) pygidium; 2b) terminal abdominal sternite; 3) ovipositor

Literature

- BLACKBURN, T. 1900: Further notes on Australian Coleoptera, with descriptions of new genera and species (27). - Trans.Roy.Soc.South Austral. 24(1), 113-169.
- GERSTMEIER, R. 1990: Revision of the genus *Olesterus* SPINOLA, 1841, with description of new species from Australia (Coleoptera, Cleridae). - Mitt.Münch.Ent.Ges. 80, 21-38.
- CORPORAAL, J.B. 1950: Cleridae. - Coleopterorum Catalogus, Supplementa pars 23, Uitgeverij Dr. W. Junk, 's-Gravenhage, 1- 373.
- MIYATAKE, M. 1968: Some species of Cleridae from New Caledonia (Coleoptera). - Bull.Osaka Museum Nat.Hist. 21, 1-4.
- SCHENKLING, S. 1916: Neue Beiträge zur Kenntnis der Cleriden (Col.) 5. - Entomol.Mitt. 5(9/12), 219-222.
- WESTWOOD, J.O. 1852: Descriptions of new species of Cleridae, from Asia, Africa and Australia. - Proc.Zool.Soc.London 20, 34- 55.

Author's Address: Dr. Roland GERSTMEIER, Technische Universität München, Angewandte Zoologie, D-8050 Freising 12, F.R.G.

ZOBODAT - www.zobodat.at

Zoologisch-Botanische Datenbank/Zoological-Botanical Database

Digitale Literatur/Digital Literature

Zeitschrift/Journal: [Koleopterologische Rundschau](#)

Jahr/Year: 1991

Band/Volume: [61_1991](#)

Autor(en)/Author(s): Gerstmeier Roland

Artikel/Article: [Mimolesterus gen.n., a new genus of Australian Cleridae \(Coleoptera: Cleridae\). 171-173](#)