

Studies on the *Eucibdelus* lineage, part 5. A revision of *Eucibdelus* KRAATZ, 1859 – new species, new data, corrigenda, nomenclatural changes (Coleoptera: Staphylinidae: Staphylininae)

H. SCHILLHAMMER

Abstract

Additional faunistic records are presented for the genus *Eucibdelus* KRAATZ, 1859 (Coleoptera: Staphylinidae: Staphylininae). One new species, *E. gratoides*, is described from India. *Eucibdelus bhutanicus* COIFFAIT, 1977 is removed from synonymy with *E. gracilis* KRAATZ, 1859. *Eucibdelus quadricollosus* BERNHAUER, 1916 is transferred to the genus *Rhynchocheilus* SHARP, 1889.

Key words: Coleoptera, Staphylinidae, Staphylininae, *Eucibdelus*, new species, new combination, systematics, taxonomy, faunistics.

Introduction

This paper deals with corrections and additions to the *Eucibdelus* revision (SCHILLHAMMER 2023). It became necessary due to mistakes and omissions that happened in the paper mentioned above. In addition, I take the opportunity to describe another new species that did not make it into the revision because its status was unclear to me at that time.

Acronyms and acknowledgement

The specimens treated in this paper are deposited in the following institutional and private collections:

FSHC private collection of Fang-Shuo Hu, Taiwan
NMB Naturhistorisches Museum, Basel, Switzerland (M. Borer)
NMW Naturhistorisches Museum Wien, Austria

The help of the persons mentioned above is greatly appreciated. In addition, I am thankful to Adam J. Brunke for proof-reading the manuscript.

Eucibdelus gracilis KRAATZ, 1859

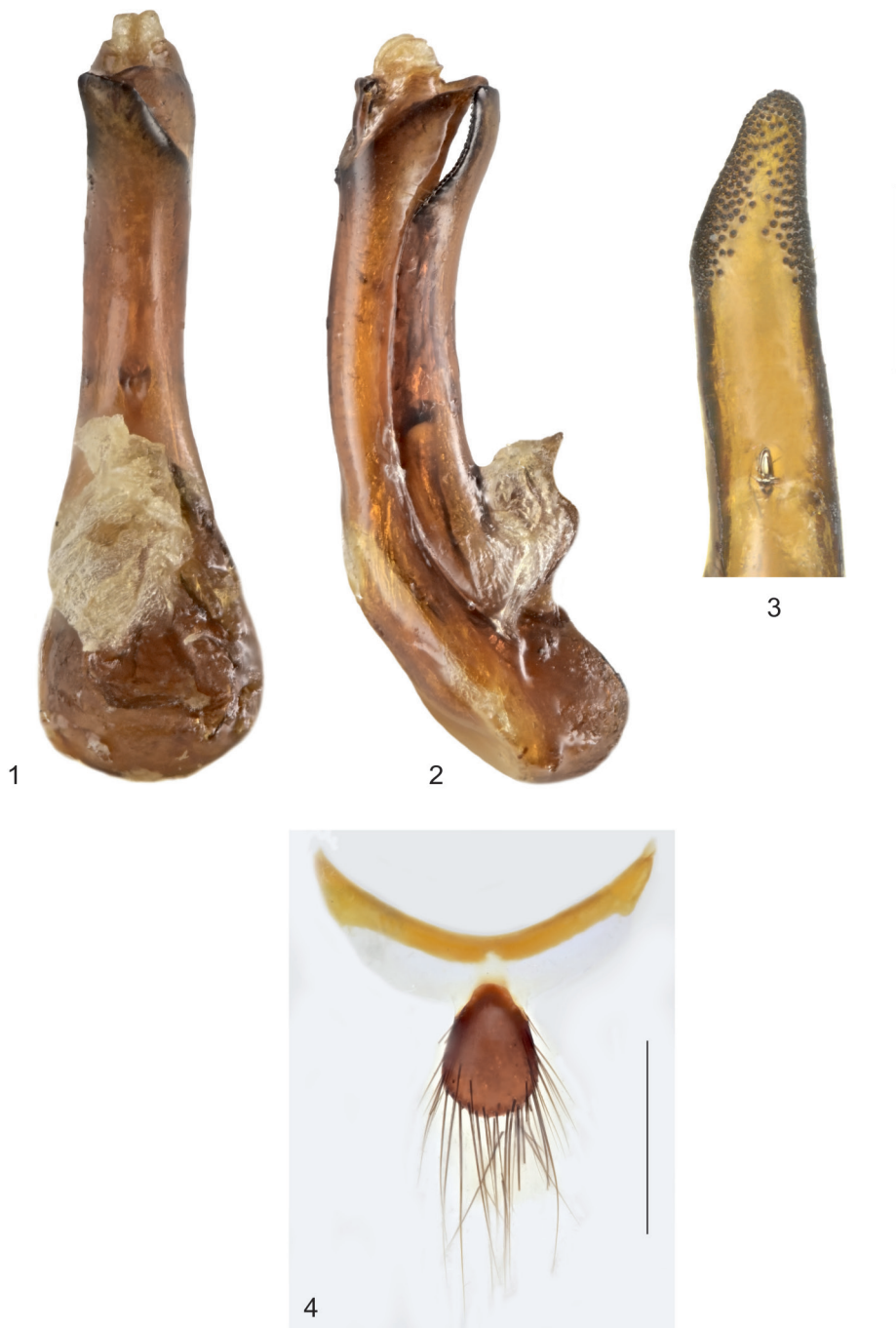
Eucibdelus gracilis KRAATZ 1859: 71.

Due to the fact that *Eucibdelus bhutanicus* COIFFAIT, 1977 has been removed from synonymy (see below), the distributional record for Bhutan is no longer valid.

Eucibdelus bhutanicus COIFFAIT, 1977 stat.rev.

Eucibdelus bhutanicus COIFFAIT 1977: 237; synonym of *E. gracilis* (SCHILLHAMMER 2023).

Holotype ♂: “km 87 von Phuntsholing, 22/5”, “Nat.-Hist.Museum Basel – Bhutan Expedition 1972”, “HOLOTYPE”, “*Eucibdelus bhutanicus* H. Coiffait 1976” (NMB). – **Paratypes**: 3 ♀ ♀ (incl. Allotype): same data as holotype (NMB); 1 ♂: “Gogona, 3100 m, 10.-12.6.”, “Nat.-Hist.Museum Basel – Bhutan Expedition 1972” (NMB).



Figs. 1–4: *Eucibdelus bhutanicus*: 1–2) aedeagus of paratype in ventral (1) and lateral (2) view, 3) paramere of holotype, 4) female tergite X. Scale bar: 0.5 mm.



Fig. 5: Habitus of *Eucibdelus gratoides*.

When preparing part 4 of the revision (SCHILLHAMMER 2023), I only had the holotype for study. The aedeagus of this specimen had the paramere separated from the median lobe by the original author, resulting in a rather vague interpretation of that species by myself. Meanwhile, I was able to study the whole type series resulting in the conclusion that its synonymization with *E. gracilis* was unjustified.

Aedeagus (Figs. 1–3) very similar to that of *E. graciloides* SCHILLHAMMER, 2023, but with apical portion of paramere (ventral view) much less markedly narrowed. Female tergite X (Fig. 4) similar to that of *E. gracilis*, but pigmented portion narrower and more elongate.

DIAGNOSIS: 10.2–16.0 mm long (7.2–8.1 mm, abdomen excluded). – Externally, the species is virtually indistinguishable from *E. gracilis* and *E. graciloides* and may be only separated by the shape of the aedeagus.

Eucibdelus varius FAUVEL, 1895

New records: Vietnam: Yen Bai Prov., IV.2021, leg. local collector (1 ♀: NMW); Lai Chau, VI.2020 (1 ♀: FSHC).

The species was not known from Vietnam. The above specimens are the two misidentified paratypes of *Eucibdelus fangshuohui* SCHILLHAMMER, 2023 mentioned below.

Eucibdelus fangshuohui SCHILLHAMMER, 2023

Additional record: Vietnam: “Lai Chau, IV.2021” (1 ♂, NMW).

The female paratype labeled “Lai Chau” (NMW) in SCHILLHAMMER (2023) has been misquoted and should read “Yen Bai Prov.”. It belongs to *Eucibdelus varius*! Also, the other female paratype from “Lai Chau” (in FSHC) belongs to *E. varius* (see above)!

Consequently, since both known females belong to another species, the line stating “female unknown”, which was wrong at the time of publication, is now correct!

Eucibdelus uenoi HAYASHI, 2021

Additional record: Vietnam: “Lai Chau, IV.2021” (1 ♂, NMW).

Eucibdelus gratoides sp.n.

Holotype ♂: “INDIA-NE, Assam prov., 25°27'N 92°43'E, 700 m, Umrongso (80 km E of Shillong), 17-25.v.1999, Z. Košťál leg.” (NMW). – **Paratypes:** 1 ♂, with same data as holotype (NMW); 1 ♂, 1 ♀: “INDIA-NE, Meghalaya, 25°30'N 90°14'E, Tura (3km E), 1-8-v.1999, 500-1150 m, Z. Košťál leg.” (NMW).

DESCRIPTION (Habitus: Fig. 5): 10.2–12.8 mm long (5.5–5.8 mm, abdomen excluded). – **Male:** Black, anterior margin of clypeus narrowly reddish, labrum, palpi and antennae reddish to yellowish red, antennae with five outer segments dark brown; elytra with hypomera and shoulders reddish to reddish yellow, suture, posterior margin obscurely reddish, in addition, often with a short, dark red, oblique band originating at yellowish shoulder portion, leading posteriad toward suture but not reaching it; posterior margins of tergites III-V narrowly, obscurely reddish, dark reddish to brownish posterior margins of remaining tergites very dark and indistinct; legs black, protibiae and protarsi entirely bright reddish, tips of pro- and mesofemora reddish, segments 2–5 of mesotarsi and 3–5 of metatarsi darker reddish. **Female:** head reddish, with an extensive black dorsal spot; antennae red, with five outer segments almost black; pronotum with all margins broadly reddish; reddish parts of elytra more extensive than in males; front and middle legs with femora entirely bright reddish.

Head rounded quadrangular, about as wide as long in males, slightly longer than wide in female (ratio 1.06), widest above slightly protruding eyes; punctation very dense, punctures contiguous, with a narrow but well delimited impunctate midline in anterior half in males, almost lacking in female specimen; antennae with segments 4 and 5 slightly oblong, segment 11 as long as or longer than segments 9 and 10 combined; eyes rather small, tempora 1.20–1.38 times as long as eyes in males, 1.66 in female; pronotum 1.15–1.9 times as long as wide in males, 1.03 in female; punctation about as dense as on head, males with a distinct, but variably long impunctate midline, either only in posterior half or more narrowly continuing onto almost anterior margin, hardly any impunctate midline discernible in female; scutellum very densely punctate; elytra very finely, densely almost asperately punctate, punctation becoming less dense and finer in basal depressions and close to posterior margin, there also with very fine microsculpture, in addition, with a longitudinal row of larger setiferous punctures on disc of each elytron; abdominal tergites III–VI with transverse basal depression, bordered by oblique accessory lines; surface very densely punctate, somewhat less dense toward anterior and posterior margins, less densely punctate portions showing fine microsculpture of transverse waves; tergites III–V with variegated silvery and golden pubescence.

Aedeagus (Figs. 6–8) similar to that of *E. gratus* CAMERON, 1932, but, especially in lateral view, median lobe with more distinctly pointed apex (aedeagus of *E. gratus* in lateral view: Fig. 11); paramere (Fig. 9); female tergite X (Fig. 10).

DIAGNOSIS: The species is very similar to *E. gratus* but can be separated by the darker elytra with reddish color confined mostly to the shoulder area, and by the shape of the aedeagus. All other characters, e.g. the more rounded head shape, the slightly less obvious golden pubescence on tergites III–V, might be variable characters.

DISTRIBUTION: The species is at present known only from the type locality.

ETYMOLOGY: The name of the species alludes to the strong similarity with *E. gratus*.

Eucibdelus montanus COIFFAIT, 1977

Eucibdelus montanus COIFFAIT 1977: 239.

Eucibdelus tibialis COIFFAIT 1977: 240.

Eucibdelus montanus: **Holotype** ♂: “Gogona, 3100 m, 10.-12.6.”, “Nat.-Hist.Museum Basel – Bhutan Expedition 1972”, “HOLOTYPE”, “*Eucibdelus montanus* H. Coiffait 1976” (NMB). – **Paratypes**: 1 ♂: same data as holotype (NMB); 1 ♂: “Sampa-Kotoka, 1400-2600 m, 9.6.”, “Nat.-Hist.Museum Basel – Bhutan Expedition 1972” (NMB); 1 ♂ (not female as stated in the original description): “Decchi Paka, 3300 m, 19/6”, “Nat.-Hist.Museum Basel – Bhutan Expedition 1972” (NMB).

Eucibdelus tibialis: **Holotype** ♀: “Gogona, 3100 m, 10.-12.6.”, “Nat.-Hist.Museum Basel – Bhutan Expedition 1972”, “HOLOTYPE”, “*Eucibdelus tibialis* H. Coiffait 1976” (NMB). – **Paratype**: 1 ♀ with same data as holotype (NMB).

I have not studied the paratypes in the Coiffait collection (Muséum national d’Histoire naturelle, Paris, France), but the paratypes mentioned above are all conspecific with the holotype of *E. montanus*. Therefore, no changes to the concept presented in the 2023 revision are necessary. However, the variability in body size and proportions can now be better assessed.

Body size (depending on extension of the abdomen) of males 9.5–12.3 mm (5.5–6.4 mm, abdomen excluded), females 11.2–14.5 mm (6.5–7.5 mm, abdomen excluded); tempora 1.3–1.6 times as long as eyes in males, 1.73–1.75 in females (larger specimens have longer temples); pronotum 1.12–1.22 times as long as wide.



Figs. 6–11: *Eucibdelus gratoides* (6–10) and *E. gratus* (11): 6–7) aedeagus in ventral (6) and left lateral (7) view, 8, 11) apical half of aedeagus, right lateral view, 9) paramere, 10) female tergite X. Scale bar: 0.5 mm.

***Rhynchocheilus quadricollosus* (BERNHAEUER, 1916) comb.n.**

Eucibdelus quadricollosus: BERNHAUER 1916: 32.

The species was accidentally omitted in the 2023 paper. It belongs to the genus *Rhynchocheilus* SHARP, 1889. This new combination again highlights the fact that the generic concept of this lineage as treated by former authors was highly inaccurate.

Zusammenfassung

Zusätzliche faunistische Nachweise für die Gattung *Eucibdelus* KRAATZ, 1859 werden präsentiert. Eine neue Art, *E. gratooides* sp.n., wird aus Indien beschrieben. *Eucibdelus bhutanicus* COIFFAIT, 1977 wird aus der Synonymieliste von *E. gracilis* KRAATZ, 1859 entfernt und in den Rang einer validen Art erhoben. *Eucibdelus quadricollosus* BERNHAUER, 1916 wird in die Gattung *Rhynchocheilus* SHARP, 1889 transferiert.

References

Here only those references are listed that have not been included in the revision of SCHILLHAMMER (2023).

BERNHAEUER, M. 1916: Kurzflügler aus dem deutschen Schutzgebiete Kiautschau und China. – Archiv für Naturgeschichte 81 (A) (8): 27–34.

SCHILLHAMMER, H. 2023: Studies on the *Eucibdelus* lineage, part 4. A revision of *Eucibdelus* Kraatz, 1859. – Koleopterologische Rundschau 93: 53–180.

SHARP, D. 1889: The Staphylinidae of Japan (continued). – Annals and Magazine of Natural History 6 (3): 108–120.

Dr. Harald SCHILLHAMMER

Naturhistorisches Museum Wien, Burgring 7, A – 1010 Wien, Austria (harald.schillhammer@nhm-wien.ac.at)

ZOBODAT - www.zobodat.at

Zoologisch-Botanische Datenbank/Zoological-Botanical Database

Digitale Literatur/Digital Literature

Zeitschrift/Journal: [Koleopterologische Rundschau](#)

Jahr/Year: 2024

Band/Volume: [94_2024](#)

Autor(en)/Author(s): Schillhammer Harald

Artikel/Article: [Studies on the Eucibdelus lineage, part 5. A revision of Eucibdelus KRAATZ, 1859 – new species, new data, corrigenda, nomenclatural changes \(Coleoptera: Staphylinidae: Staphylininae\) 83-89](#)