

Linzer biol. Beitr.	31/1	503-505	30.7.1999
---------------------	------	---------	-----------

A new species of *Dolichozepe* CURTIS (Diptera: Tipulidae) from Australia

G. THEISCHINGER

Abstract: *Dolichozepe (Dolichozepe) zborowskii* spec. nov. (type locality: Queensland, Mount Edith, 1050 m) is described.

Key words: *Dolichozepe*, new species, Australia.

Introduction

The Australian species of *Dolichozepe* were revised by THEISCHINGER (1993). In spite of collecting and identifying large numbers of *Dolichozepe* specimens since, only a single undescribed species was encountered. This species is described as new below.

Description

Dolichozepe (Dolichozepe) zborowskii spec. nov. (Figs 1-3)

Description (♂): Head dark brownish grey; rostrum, palps, scape and pedicel yellowish grey; first flagellomere greyish brown, other flagellomeres missing. Thoracic terga greyish brown, pleura yellowish grey. Coxae and trochanters yellowish grey; rest of middle leg greyish brown, other legs missing. Wings hyaline, suffused slightly with yellowish- to pale greyish brown; pterostigma greyish brown. Halteres pale greyish brown. Abdomen yellowish- to greyish brown.

Dimensions: Wing length 6.0-6.2 mm.

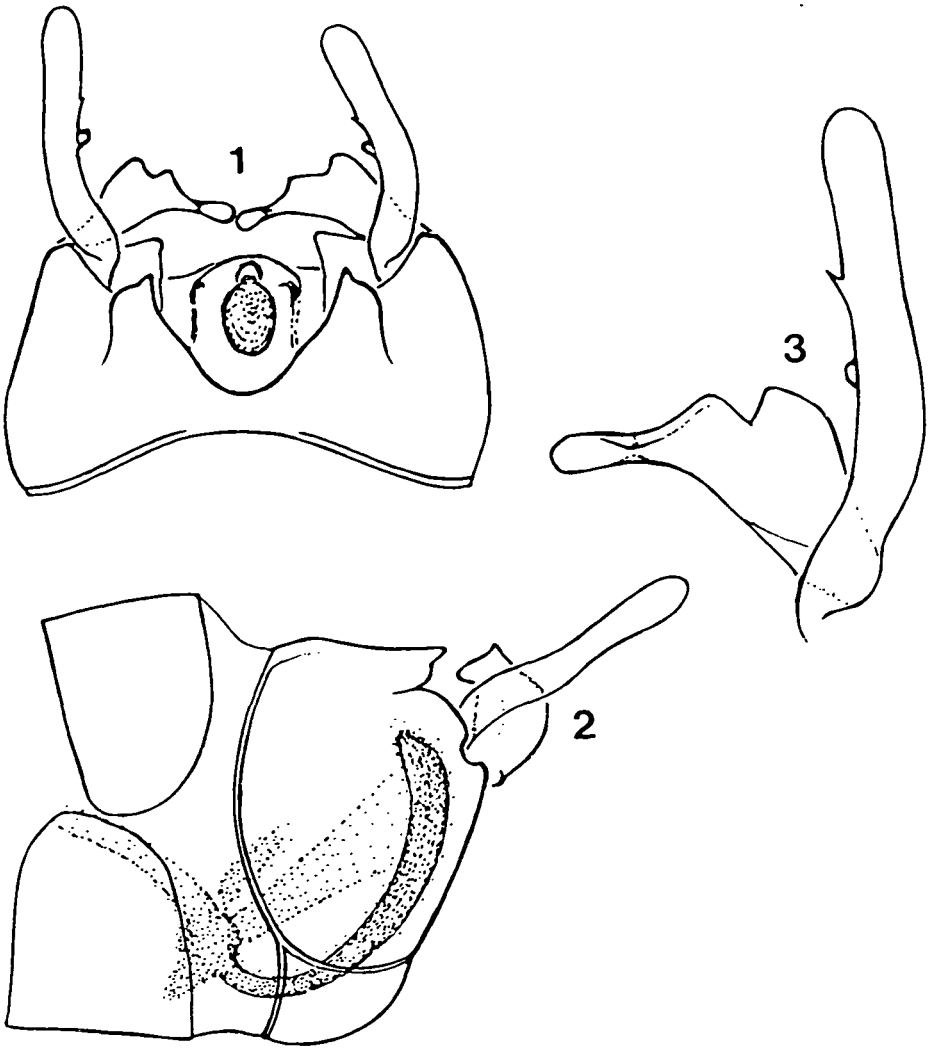
Genitalia: Hypopygium, Figs 1-3.

Remarks: Somewhat similar to *D. (D.) brevifurca* SKUSE, *D. (D.) queenslandica* ALEXANDER and *D. (D.) planidigitalis* SKUSE, but possibly closest to *D. (D.) varipes* SKUSE. Diagnostic characters (male): tergum 9 widely excised medially; inner gonostylus strongly differentiated; outer gonostylus armed with squarish tooth at about midlength, an additional small spine at about 2/3 length may be present (paratype) or not (holotype).

Material examined: Holotype ♂, Queensland, Mount Edith, 1050 m, 17.06S/145.37E, 1.12.1994 - 3.1.1995 (F.I. malaise), P. Zborowski (ANIC). Paratype: 1♂, Queensland, Massey Creek, 1000 m, 17.37S/145.34E, 1.12.1994 - 3.1.1995 (F.I. malaise), P. Zborowski (ANIC).

Distribution: Queensland.

Name: Dedication to Mr P. Zborowski.



Figs 1-3: *Dolichozepe (Dolichozepe) zborowskii* sp.n., male hypopygium. 1 – dorsal aspect; 2 – lateral aspect; 3 – gonostyli.