

Linzer biol. Beitr.	40/1	231-234	10.7.2008
---------------------	------	---------	-----------

**A new species of *Cypha* LEACH and the first record of *Bolitochara sogdiana* GUSAROV from Kyrgyzstan
(Coleoptera: Staphylinidae: Aleocharinae)**

V. ASSING

A b s t r a c t: *Cypha kirghisica* nov.sp. (Kyrgyzstan: Kichik Alai) is described, illustrated, and distinguished from the similar *C. suecica* (PALM). *Bolitochara sogdiana* GUSAROV, previously known only from Uzbekistan, is reported from Kyrgyzstan for the first time.

K e y w o r d s: Coleoptera, Staphylinidae, Aleocharinae, *Cypha*, *Bolitochara*, Palaearctic region, Middle Asia, Kyrgyzstan, taxonomy, new species, first record.

Introduction

In the Palaearctic region, the genus *Cypha* LEACH 1819 is currently represented by 49 species. 34 have been recorded only from the Western Palaearctic, 13 from the Eastern Palaearctic (including Middle Asia), and two from both the Western and the Eastern Palaearctic regions (ASSING 2004b-d, 2005a-b, 2007; DAUPHIN 2005; SMETANA 2004). Only two species, *C. rubicunda* (REITTER 1887) and *C. ovulum* (HEER 1839) have been reported from Middle Asia (SMETANA 2004).

While screening staphylinid material from Kyrgyzstan at the Staatliches Museum für Naturkunde, Stuttgart (SMNS), two males of a *Cypha* species were discovered. An examination of the genitalia revealed that they represent an undescribed species evidently closely allied to *C. suecica* (PALM 1936). In addition, three specimens of *Bolitochara sogdiana* were found, the first record after the original description of this species.

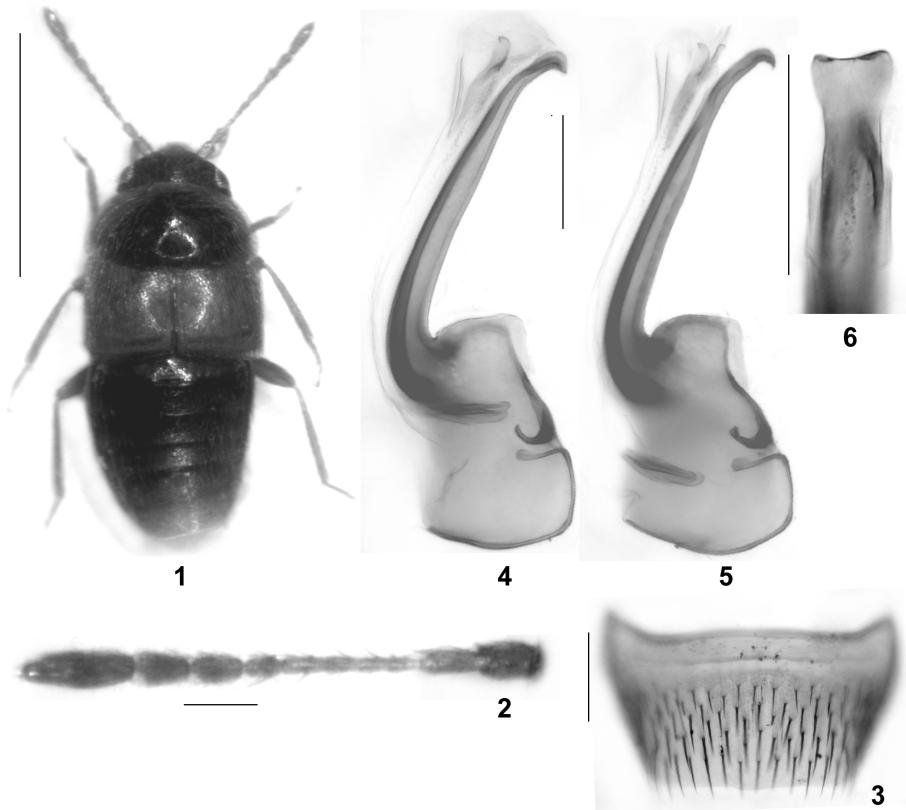
***Cypha kirghisica* nov.sp.** (Figs 1-6)

T y p e m a t e r i a l: Holotype ♂: Kirghizia: Kichik Alai, Kara-Goy, 2400 m, 21.-22.5.1993, leg. Schawaller / Holotypus ♂ *Cypha kirghisica* sp. n. det. V. Assing 2007 (SMNS). Paratype ♂: same data as holotype (cAss).

D e s c r i p t i o n: 1.7-1.8 mm; length from head to posterior margin of elytra: 0.80-0.85 mm; width of pronotum: 0.70-0.72 mm. Habitus as in Fig. 1. Coloration: Head and pronotum blackish brown to blackish, with the pronotal margin yellowish; elytra pale reddish; abdomen blackish brown, with the apex (segments VII-X) yellowish; legs and antennae yellowish.

Head strongly transverse; puncturation extremely fine, barely noticeable; eyes moder-

ately large, more than twice as long as postocular region in dorsal view. Antennae slender (Fig. 2), with distinct club formed by antennomeres VIII-X; antennomeres VIII and IX almost twice as long as wide; X approximately 3 times as long as wide and as long as the combined length of VIII and IX.



Figs 1-6: *Cypha kirghisica* nov.sp.: (1) habitus; (2) antenna; (3) male tergite VIII; (4-5) median lobe of aedeagus of holotype (4) and paratype (5) in lateral view; (6) apical part of ventral process of aedeagus in ventral view. Scale bars: 1: 1.0 mm; 2-6: 0.1 mm.

Pronotum approximately 1.85 times as wide as long and 1.50 times as wide as head; puncturation as fine as that of head; microsculpture absent or extremely shallow, barely noticeable.

Elytra slightly wider than and at suture almost as long as pronotum; puncturation fine and rather sparse; microsculpture very shallow. Hind wings (fully?) developed. Protarsomere I evidently with sexual dimorphism, in ♂ enlarged, almost as long as the combined length of the following tarsomeres. Metatarsomere I almost as long as the combined length of the apical tarsomeres.

Abdomen with extremely fine puncturation; microsculpture very fine and shallow; posterior margin of tergite VII with palisade fringe.

♂: posterior margin of tergite VIII truncate (Fig. 3); posterior margin of sternite VIII moderately produced in the middle; median lobe of aedeagus as in Figs 4-6.

Comparative notes: In external and sexual characters, *C. kirghisica* is most similar to *C. suecica*, but distinguished from this species by slightly more slender body (pronotal width in *C. suecica*: 0.75-0.80 mm), the uniformly reddish elytra (in *C. suecica* anteriorly and laterally more or less distinctly infuscated), and by the different morphology of the median lobe of the aedeagus. For illustrations of the habitus and the male sexual characters of *C. suecica* see ASSING (2004a).

From the other two congeners recorded from Middle Asia, the new species is distinguished as follows:

from *C. ovulum* by distinctly larger size (*C. ovulum*: 0.5-0.8 mm), completely different coloration (*C. ovulum*: legs and antennae brown to blackish; elytra blackish), and an aedeagus of completely different morphology (*C. ovulum*: much broader, shorter, and less slender);

from *C. rubicunda*, which was described from "Turkmenien" (REITTER 1887) and whose sexual characters are unknown, by smaller size (*C. rubicunda*: 1.7-2.0 mm), the darker coloration of the head, pronotum, and abdomen (*C. rubicunda*: whole body reddish, except for the castaneous base of the abdomen), and by the shorter antennae (*C. rubicunda*: almost as long as body, according to the original description).

Etymology: The name (adjective) is derived from Kirghisia (= Kyrgyzstan).

Distribution and bionomics: The type locality, Karagoy (40°04'N, 72°35'E), is situated in southwestern Kyrgyzstan. The type specimens were collected at an altitude of 2400 m.

***Bolitochara sogdiana* GUSAROV 1995**

Material examined: Kyrgyzstan: 3 exs., Ferganskiy Alatau, Yarodar, 1400-1500m, leg. Schawaller (SMNS, cAss).

Comment: The species was previously known only from Uzbekistan (GUSAROV 1995) and is here reported from Kyrgyzstan for the first time.

Acknowledgements

I am indebted to Dr. Wolfgang Schawaller (SMNS) for making the collections under his care accessible to me. Benedikt Feldmann (Münster) proof-read the manuscript.

Zusammenfassung

Cypha kirghisica nov.sp. (Kyrgyzstan: Kichik Alai) wird beschrieben, abgebildet und von der ähnlichen *C. suecica* (PALM) unterschieden. *Bolitochara sogdiana* GUSAROV, bisher nur aus Uzbekistan bekannt, wird erstmals aus Kyrgyzstan nachgewiesen.

References

- ASSING V. (2004a): *Cypha suecica* (PALM, 1936) – Erstnachweis für Deutschland (Coleoptera, Staphylinidae). — Entomologische Blätter **100**: 27-28.
- ASSING V. (2004b): Two new species of *Cypha* LEACH from Spain (Coleoptera: Staphylinidae, Aleocharinae). — Linzer biologische Beiträge **36** (2): 735-740.
- ASSING V. (2004c): New species and records of Staphylinidae from Greece (Insecta: Coleoptera). — Linzer biologische Beiträge **36** (2): 593-613.
- ASSING V. (2004d): New species and records of Staphylinidae from Turkey III (Insecta: Coleoptera). — Linzer biologische Beiträge **36** (2): 669-733.
- ASSING V. (2005a): New species and records of Staphylinidae from Tunisia (Insecta: Coleoptera). — Linzer biologische Beiträge **37** (2): 749-770.
- ASSING V. (2005b): On the types of some species of Staphylinidae described by G. LUZE, S.M. IABLOKOFF-KHNZORIAN, and H. FRANZ (Insecta: Coleoptera). — Entomologische Blätter **101**: 57-64.
- ASSING V. (2007): New species and additional records of Staphylinidae from Turkey V (Coleoptera). — Stuttgarter Beiträge zur Naturkunde Serie A (Biologie) **700**: 1-64.
- DAUPHIN P. (2005): Description de *Cypha tbilisiensis* n.sp. de Georgie (Coleoptera, Staphylinidae, Aleocharinae). — Bulletin de la Société Linnéenne de Bordeaux **27**: 135-141.
- GUSAROV V.I. (1995): Novyei maloizvestnye Palearkticheskie stafflinidy (Coleoptera, Staphylinidae). — Entomologicheskoe Obozrenie **74**: 81-96.
- REITTER E. (1887): Neue Coleopteren aus Europa, den angrenzenden Ländern und Sibirien, mit Bemerkungen über bekannte Arten. — Deutsche Entomologische Zeitschrift **31**: 241-288.
- SMETANA A. (2004): Staphylinidae, subfamily Aleocharinae, pp. 353–494. — In: LÖBL I. & A. SMETANA (eds.): Catalogue of Palaearctic Coleoptera. II. Hydrophiloidea – Histeroidea – Staphylinoidea. — Stenstrup, Apollo Books: 942 pp.

Author's address:

Dr. Volker ASSING
Gabelsbergerstr. 2
D-30163 Hannover, Germany
E-mail: vassing.hann@t-online.de

ZOBODAT - www.zobodat.at

Zoologisch-Botanische Datenbank/Zoological-Botanical Database

Digitale Literatur/Digital Literature

Zeitschrift/Journal: [Linzer biologische Beiträge](#)

Jahr/Year: 2008

Band/Volume: [0040_1](#)

Autor(en)/Author(s): Assing Volker

Artikel/Article: [A new species of *Cypha* LEACH and the first record of *Bolitochara sogdiana* GUSAROV from Kyrgyzstan \(Coleoptera: Staphylinidae: Aleocharinae\) 231-234](#)