

Linzer biol. Beitr.	42/2	1077-1091	19.12.2010
---------------------	------	-----------	------------

## **A revision of Othiini. XVII. A new species from China and additional records (Coleoptera: Staphylinidae: Staphylininae)**

V. ASSING

**A b s t r a c t :** *Othius glaber* nov.sp. (China: Yunnan) is described, illustrated, and distinguished from the similar *O. lubricus* ASSING 1999. New illustrations of the external and male sexual characters of *O. chrysurus* REITTER 1891 are provided. Additional records of 30 species and subspecies of Othiini are reported, among them several new country records and the first record of the genus *Othius* STEPHENS 1829 from Afghanistan.

**K e y w o r d s :** Coleoptera, Staphylinidae, Aleocharinae, Othiini, *Othius*, *Atrecus*, Palearctic region, China, taxonomy, new species, new records.

### **1. Introduction**

According to part XVI (ASSING 2008) of the revision of Othiini, this Holarctic tribe previously comprised 140 species and subspecies in four genera, with the vast majority (123 species and subspecies) in the Palearctic genus *Othius* STEPHENS 1829. While in the years following the basic revisions (ASSING 1997a-b, 1998, 1999a, ASSING & WUNDERLE 1995) several new species (particularly *Othius* species) were added almost every year, the rate of new discoveries seems to have slowed down somewhat in recent years. Thus, in the material studied since the last contribution only one species out of a total of 31 was undescribed.

### **2. Material and methods**

The material referred to in this study is deposited in the following public institutions and private collections:

HNHM ..... Hungarian Natural History Museum, Budapest (G. Makranczy)

NHMD ..... Natural History Museum Denmark/ University of Copenhagen Zoological Museum (A. Solodovnikov)

NMP ..... Národní Muzeum v Praze (M. Fikáček, J. Hájek)

TLMFI ..... Tiroler Landesmuseum Ferdinandeum, Innsbruck (M. Kahlen)

cAss..... author's private collection  
 cFel ..... private collection Benedikt Feldmann, Münster  
 cLen ..... private collection José Luis Lencina, Jumilla  
 cRen ..... private collection Klaus Renner, Bielefeld  
 cRou..... private collection Guillaume de Rougemont, London  
 cSha..... private collection Alexey Shavrin, Irkutsk  
 cSch..... private collection Michael Schülke, Berlin  
 cSme..... private collection Aleš Smetana, Ottawa  
 cVai..... private collection Dante Vailati, Brescia  
 cWun..... private collection Paul Wunderle, Mönchengladbach

The morphological studies were carried out using a Stemi SV 11 microscope (Zeiss Germany) and a Jenalab compound microscope (Carl Zeiss Jena) with a drawing tube. For the photographs a digital camera (Nikon Coolpix 995) was used.

The measurements in the description are indicated in mm and abbreviated as follows: HW: maximal head width; HL: head length from anterior margin of frons to neck; PW: maximal width of pronotum; PL: length of pronotum along median line; EL: length of elytra from apex of scutellum to elytral hind margin; TiL: length of metatibia (external aspect, from knee to insertion of first metatarsomere); TaL: length of metatarsi (claws not included); TL: total length from apex of mandibles to posterior margin of tergite VIII.

### 3. Additional records and species description

#### *Othius lapidicola* MÄRKEL & KIESENWETTER 1848

**Material examined:** Norway: 1 ex., locality illegible, 28.VIII.1956, leg. Skovgaard (NHMD). France: 1 ex., Alpes-Maritimes, E Casterino, W Mont Agnelino, 2100 m, 26.VI.2008, leg. Brachat (cAss); 1 ex., Aude, Quillan, 2.-5.V.1955, leg. Skovgaard (NHMD). Switzerland: 4 exs., Berner Oberland, Grindelwald, N Große Scheidegg, 46°40'N, 8°05'E, 2050 m, alpine shrubs, 10.VII.2002, leg. Zerche (DEI, cAss); 2 exs., Berner Oberland, Grindelwald, above Bussalp, 46°39'N, 7°59'E, 2150 m, alpine shrubs and grassland, 11.VII.2002, leg. Zerche (DEI, cAss). Austria: 1 ex., Tirol, Innsbruck Land, Halltal, Issjoch, 1600 m, 24.VIII.2004, leg. Wolf (cSch); 1 ex., Steiermark, Schneealpe, NW Kapellen, E Fartel, 47°41'N, 15°36'E, 1650 m, *Alnus viridis*, 19.V.2003, leg. Zerche (DEI). Germany: 3 exs., Bayern, Lkrs. Garmisch Partenkirchen, Kreuzeck zum Reinthaler Hof, below Hochalm, 1600 m, 18.VIII.2004, leg. Wolf (cSch, cAss); 1 ex., Chiemgau, Schleching, Geigelstein, 11.IX.2004, leg. Wolf (cSch). Italy: Piemonte: 1 ex., Val Formazza (VB), Lago Morasco, 1800 m, 8.VII.2003, leg. Angelini (NHMD). Marche: 1 ex., Monrte Sibillini, Sasso Tetto (MC), 1600 m, 26.V.2003, leg. Angelini (NHMD). Umbria: 6 exs., Monti Sibillini, Piano Grande (PG), 1500 m, beech forest, 24.V.2003, leg. Angelini (NHMD). Abruzzo: 2 exs., Pescasseroli (AQ), passo Diavolo, 1400 m, beech forest, 1.VI.2003, leg. Angelini (NHMD). Lazio: 2 exs., Leonessa (RI), Vallonina, beech forest, 22.V.2003, leg. Angelini (NHMD, cAss). Campania: 1 ex., Cilento (SA), M. Sacro, 1430 m, beech forest, 13.V.2003, leg. Angelini (cAss); 3 exs., Cilento (SA), M. Scuro, 1600 m, 12.V.2003, leg. Angelini (NHMD, cAss). Basilicata: 4 exs., Pollino, Terranova di Pollino (PZ), Duglia, 16.VI.1985, leg. Angelini (NHMD, cAss); 1 ex., Abriola (PZ), M. Pierfaone, 1600 m, 6.X.2001, leg. Angelini (cAss); 1 ex., M. Volturino (PZ), 15.IX.2002, leg. Angelini (cAss). Croatia: 8 exs., Velebit mountains, dolina 200 m NW Mrkvište, 44°43'N, 15°03'E, 1260 m, calcareous beech forest, 14.VII.2003, leg. Zerche (DEI, cAss). Serbia: 1 ex., Kapaonik planina, Jaram, 1250 m, 15.X.2007, leg. Stévanović (cAss); 2 exs., Kapaonik planina, Jaram, 1500 m,

18.VII.2009, leg. Stévanović (cAss); 1 ex., Goč planina, Gvozdak, 900 m, 29.X.2007, leg. Stévanović (cAss); 1 ex., Suva planina, 16.VI.2001, leg. Stévanović (cAss); 5 exs., Stara planina, Babin Zub, 22.VIII.2009, leg. Stévanović (cAss). Montenegro: 2 exs., Durmitor, Žabljak, Crno Jezero, 13.VI.2008, leg. Stévanović (cAss); 1 ex., Bjelasica planina, Biogradska gora, 19.VII.2009, leg. Stévanović (cAss). Albania: 1 ex., Librazhd, 25 km ESE Elbasan, Mali i Polisit, 41°04'N, 20°22'E, 1700 m, old beech forest with snow, litter sifted, 23.V.2010, leg. Assing (cAss); 2 exs., Pogradec, 18 km NNW Pogradec, S Q. e Hanës, 41°03'N, 20°37'E, 1000 m, pasture, oak shrubs sifted, 24.V.2010, leg. Assing (cAss); 1 ex., Korçë, 10 km S Korçë, Mali i Gramozit, 40°31'N, 20°48'E, 1550 m, moist beech forest margin, beech, fern, etc. sifted, partly near temporary stream, 27.V.2010, leg. Assing (cAss). Greece: 1 ex., Flórina, Pisodoria, 30.VII.2009, leg. Eifler (cAss); 3 exs., Trikala, Meteore, Agia Triada monastery, 18.III.1995, leg. Sabella (NHMD). Turkey: B u r s a : 1 ex., Kocayayla, 39°56'N, 29°16'E, 1200 m, 18.IV.2010, leg. Brachat & Meybohm (cAss); 1 ex., Samanlı Dağları, 40°28'N, 29°49'E, 780 m, 25.IV.2010, leg. Brachat & Meybohm (cAss). B o l u : 3 exs., 12 km S Bolu, 40°37'N, 31°37'E, 1490 m, fir forest with scattered pine trees, litter sifted, 27.III.2010, leg. Assing (cAss); 6 exs., 7 km S Bolu, 40°40'N, 31°38'E, 950 m, oak & beech forest, leaf litter sifted, 31.III.2010, leg. Assing (cAss). A n k a r a : 1 ex., 58 km SE Bolu, ca. 20 km N Beypazarı, 40°18'N, 31°59'E, 1540 m, pasture, grass & moss under small trees sifted, 28.III.2010, leg. Assing (cAss). K a r a b ü k : 1 ex., pass W Eskipazar, 40°58'N, 33°24'E, 1450 m, fir forest, litter sifted, 26.III.2010, leg. Assing (cAss). K a s t a m o n u : 1 ex., 30 km E Taşköprü, SE Hanönü, 41°36'N, 34°32'E, 510 m, N-slope with oak, grass, and moss, sifted, 29.III.2009, leg. Assing (cAss); 16 exs., 25 km SE Tosya, Domkayatepe geçidi, 40°56'N, 34°14'E, 1600 m, pine forest with grass and *Juniperus*, litter and grass sifted, 6.IV.2009, leg. Assing & Wunderle (cAss, cWun); 6 exs., 40 km NW Kastamonu, Ballıdağ geçidi, 41°34'N, 33°20'E 1270 m, mixed forest (fir, pine, beech), litter sifted, 7.&9.IV.2009, leg. Assing & Wunderle (cAss, cWun); 1 ex., 27 km SE Kastamonu, NW Ilgaz geçidi, 41°12'N, 33°58'E, 1480 m, fir forest near stream, litter and moss sifted, 23.III.2010, leg. Assing (cAss); 3 exs., ca. 65 km W Kastamonu, 15 km W Eflani, 41°29'N, 33°09'E, 1010 m, oak forest, litter sifted, 25.III.2010, leg. Assing (cAss). S i n o p : 1 ex., 25 km S Sinop, W Lala, 41°53'N, 35°02'E, 240 m, oak forest with undergrowth, sifted, 31.III.2009, leg. Assing (cAss); 5 exs., ca. 22 km S Sinop, N Lala, 41°53'N, 35°03'E, 160 m, oak and laurel forest with undergrowth, sifted, 31.III.2009, leg. Assing & Wunderle (cAss, cWun); 1 ex., ca. 28 km S Sinop, S Lala, 41°53'N, 35°03'E, 150 m, oak and laurel forest with undergrowth, sifted, 31.III.2009, leg. Assing (cAss); 2 exs., ca. 40 km SSE Ayancık, Çangal Dağı, 41°43'N, 34°44'E, 790 m, fir forest, litter and moss sifted, 4.IV.2009, leg. Assing (cAss). S a m s u n : 1 ex., 9 km WNW Bafra, 41°35'N, 35°50'E, 55 m, mixed deciduous forest with oak, *Hedera* and *Rubus* undergrowth, 30.III.2009, leg. Assing (cAss). O r d u : 1 ex., ca. 60 km S Ordu, 18 km SSE Gölköy, 40°32'N, 37°41'E, 970 m, N-slope with bushes and small trees, dry litter sifted, 14.VII.2008, leg. Assing (cAss); 2 exs., 75 km S Ordu, 34 km SSE Gölköy, W Mesudiye, 40°25'N, 37°47'E, 1520 m, beech forest, moist litter near small stream sifted, 14.VII.2008, leg. Assing (cAss); 1 ex., 15 km S Gölköy, Harçbeli geçidi, 40°35'N, 37°38'E, 1610 m, beech forest with *Rhododendron*, litter and mushrooms sifted, 22.VII.2008, leg. Assing (cAss). T o k a t : 1 ex., 20 km ENE Tokat, 40°22'N, 36°47'E, 1000 m, *Quercus-Carpinus* forest, litter sifted, 16.VII.2008, leg. Assing (cAss). G i r e s u n : 6 exs., 40 km S Giresun, Şehitler geçidi, 40°34'N, 38°27'E, 1790 m, spruce forest with *Rhododendron*, litter sifted, 23.VII.2008, leg. Assing (cAss). K o n y a : 1 ex., Sultan Dağları, SW Deşğin, 38°01'N, 31°36'E, 1600 m, 20.IV.2008, leg. Brachat & Meybohm (cAss).

The discontinuous Ponto-Mediterranean distribution of *O. lapidicola* is illustrated by ASSING (2003b). Some of the specimens collected in northern Anatolia in July and part of the Albanian material collected in May are teneral.

### ***Othius piceus* SCRIBA 1870**

**A d d i t i o n a l t y p e m a t e r i a l e x a m i n e d :** *O. reitteri* LA FUENTE, 1898: paralectotype /: "Hisp. Pozuelo, de la Fuente / Typus / Pozuelo / Reitteri m / Paralectotypus *Othius reitteri* Fuente, rev. V. Assing 2009 / *Othius piceus* Scriba, det. V. Assing 2009" (NMP).

**A d d i t i o n a l m a t e r i a l e x a m i n e d :** Spain: 1 ex., Valencia, Alicante, Sierra de Aitana, 38°39'N, 0°15'W, 1450 m, 7.X.2008, leg. Meybohm (cAss); 1 ex., Murcia, Jumilla, Los

Gavilanes, flight intercept trap, V.2009, leg. Gallego (cAss); 1 ex., Castilla-La Mancha, Guadalajara, Tamajón, IX-X.2006, leg. Lencina & Andújar (cAss).

A lectotype of the junior synonym *O. reitteri* FUENTE 1898 was designated by ASSING (1997b).

### ***Othius laeviusculus* STEPHENS 1833**

**Material examined:** Tunisia: 1 ex., Maktar, 9.III.1986 (NHMD). Morocco: 1 ex., Kenifra, lake Aguelmane, Azizga, 10.V.2009, leg. Hlaváč (cAss); 1 ex., Haute Atlas, Oukaïmeden, 31°14'N, 7°49'W, 2240 m, leg. Hlaváč et al. (cAss); 7 exs., Azrou-Ifrane area, 1400-2000 m, 17.-19.IV.1989 (NHMD, cAss). Spain: 1 ex., Valencia, Alicante, Sierra de Aitana, 38°39'N, 0°15'W, 1450 m, 7.X.2008, leg. Meybohm (cAss); 1 ex., Andalucía, Córdoba, La Nava, Sierra de Cabra, 28.IV.2007, leg. Baena (cAss). France: 1 ex., Corsica, Ajaccio, 5.III.1906, leg. Budtz (NHMD). Austria: 1 ex., "Alpes Carynthia" (NHMD). Italy: L a z i o : 3 exs., Colli Albani, Roma, Nemi, 19.V.2003, leg. Angelini (NHMD). C a m p a n i a : 1 ex., Rutino, 1960, leg. Skovgaard (NHMD). P u g l i a : 1 ex., Daulia, Biocari (FG), Lago Pescara, 910 m, 30.IV.2006, leg. Angelini (NHMD); 1 ex., Francavilla Fontana (BR), 140 m, 2.VI.1991, leg. Angelini (NHMD). B a s i l i c a t a : 11 exs., M. Vulture (PZ), 1400 m, 8.V.2003, leg. Angelini (NHMD); 1 ex., Pietrapertosa (PZ), M. Impiso, 1100 m, 13.I.1996, leg. Angelini (NHMD). C a l a b r i a : 1 ex., Piani Aspromonte (RC), 1100 m, 21.VI.1993, leg. Angelini (NHMD). S i c i l i a : 1 ex., Messina, leg. Schiödt (NHMD). Albania: 4 exs., Korçë, 19 km N Korçë, Pllaja e Pusit, 40°47'N, 20°49'2E, 1040 m, pasture, under stones, 24.V.2010, leg. Assing (cAss). Greece: 1 ex., Chalkidiki, 12 km NW Megali Panagia, 40°28'N, 23°34'E, 1000 m, 21.V.2005, leg. Bayer (cSch); 1 ex., E-Makedhonia, Falakro, 19 km NW Drama, 41°18'N, 24°00'E, 1200 m, 14.V.2005, leg. Bahr et al. (cSch); 1 ex., Pieria, Olympos, Lithoro, 800 m, 27.V.2005, leg. Angelini (NHMD); 1 ex., Lamia, 1962, leg. Skovgaard (NHMD); 1 ex., Crete, Irakleio/Rethymnon, Ida mts., Skinakas Oros, below Asteroskopeion, 35°13'N, 24°54'E, 1690 m, 21.X.2006, leg. Schülke (cSch); 1 ex., Rhodos, Theologos, 36°23'N, 28°02'E, beach, 6.IV.2007, leg. Bahr et al. (cSch); 3 exs., Rhodos, Profitis Ilias, 36°16'N, 27°57'E, 660 m, 1.IV.2007, leg. Bahr et al. (cSch). Cyprus: 3 exs., Olympos, 34°57'N, 32°51'E, 1900 m, 13.IV.2008, leg. Lompe (cAss). Turkey: B u r s a : 1 ex., Samanlı Dağları, 40°32'N, 29°52'E, 740 m, 20.IV.2010, leg. Brachat & Meybohm (cAss). E d i r n e : 1 ex., Kuru Dağı, 40°42'N, 26°46'E, 330 m, 10.IV.2010, leg. Brachat & Meybohm (cAss). A n t a l y a : 2 exs., N Alanya, Gündoğmus env., 36°49'N, 32°02'E, 1100 m, 26.IV.2008, leg. Brachat & Meybohm (cAss). K a r a m a n : 1 ex., Ermenek-Gülнар, Moca geçidi, 36°32'N, 33°00'E, 1420 m, 21.IV.2008, leg. Brachat & Meybohm (cAss). A d a n a : 2 exs., SW Hasandede geçidi, NE Kayadibi, 37°30'N, 35°23'E, 1230 m, 26.IV.2007, leg. Brachat & Meybohm (cAss). K a h r a m a n m a r a ş : 1 ex., 25 km SW Kahramanmaraş, Yesilyöre, 37°26'N, 36°45'E, 800 m, 23.IV.2007, leg. Brachat & Meybohm (cAss); 1 ex., 30 km SSW Kahramanmaraş, Uzunsöğüt, 37°24'N, 36°48'E, 530 m, 23.IV.2007, leg. Brachat & Meybohm (cAss); 2 exs., 40 km SW Kahramanmaraş, W Doluca, 37°23'N, 36°41'E, 1040 m, 23.IV.2007, leg. Brachat & Meybohm (cAss); 1 ex., Imalı, 37°21'06"N, 36°44'22"E, 850 m, 21.IV.2009, leg. Brachat & Meybohm (cAss); 1 ex., Çınarpınar, 37°39'N, 36°35'E, 575 m, 22.IV.2009, leg. Brachat & Meybohm (cAss); 1 ex., Çınarpınar, 37°40'N, 36°35'E, 960 m, 22.IV.2009, leg. Brachat & Meybohm (cAss).

The expansive Holo-Mediterranean distribution of *O. laeviusculus* is mapped by ASSING (2005a). The above specimens from Albania represent a new country record.

### ***Othius angustus angustus* STEPHENS 1833**

**Material examined:** Iceland: 4 exs., Höfn, Hornafjörður, 24.-28.VIII.2008, leg. Reuter (cFel, cAss). Norway: 1 ex., locality not specified, leg. Skovgaard (NHMD). Spain: 2 exs., Pirineos, Monte Perdido, Collate Anisole, 2400 m, 25.VIII.2005, leg. Anistschenko (cAss, cSha). Switzerland: 3 exs., Berner Oberland, Grindelwald, N Große Scheidegg, 46°40'N, 8°05'E, 2050 m, alpine shrubs, 10.VII.2002, leg. Zerche (DEI, cAss); 7 exs., Berner Oberland, Grindelwald, above Bussalp, 46°39'N, 7°59'E, 2150 m, alpine shrubs and grassland, 11.VII.2002, leg. Zerche (DEI, cAss); 1 ex., Berner Oberland, Grindelwald, above First, 46°39'N, 8°02'E, 2290 m, alpine

grassland, 9.VII.2002, leg. Zerche (DEI). Germany: 1 ex., Brandenburg, Eberswalde, Lichterfelder Bruch, 52°52'N, 13°47'E, nest of *Formica truncorum*, 26.VIII.2007, leg. Zerche (DEI). Romania: 1 ex., jud. Maramureş, Săpantă, Piatra, Mireş, 800 m, beech forest, sweep-net, 4.VI.2008, leg. Grabant et al. (HNHM).

The distribution of this subspecies is of the expansive Atlanto-Mediterranean type; for a map see ASSING (1997b).

### ***Othius angustus stenocephalus* EPELSHEIM 1881**

**M a t e r i a l e x a m i n e d :** Russia: 1 ex., Adygeia Kr., Lagonaki Plateau, 12 km NE Mt. Fisht, 1800 m, 14.VI.1999, leg. Smetana (cSme).

The distribution of this subspecies is confined to the Caucasus region (ASSING 1997b).

### ***Othius punctulatus* (GOEZE 1777)**

**M a t e r i a l e x a m i n e d :** Morocco: 1 ex., Moyen Atlas, Azrou, Tizi-n-Tretten, 1700 m, 10.V.2009, leg. Hlaváč (cAss); 1 ex., Khénifra, lake Aguelmane Azizga, 10.V.2009, leg. Hlaváč (cSch); 1 ex., Moyen Atlas, Azrou, Tizi-n-Tetten, 1700 m, 10.V.2009, leg. Hlaváč (cSch). Spain: mainland: 1 ex., Andalucía, Cádiz, 15 km NE Ubrique, Sierra de Grazalema, 36°45'N, 5°27'W, 770 m, calcareous oak forest, sifted, 28.XII.2009, leg. Assing (cAss); 1 ex., Andalucía, Jaén, Siles, Sima Canané, 11.II.2007, leg. GEV (cAss). Balears: 8 exs., Mallorca, Serra de Tramuntana, Coll de Hono, 3 km W Orient, 39°44'N, 2°44'E, 580 m, mixed forest and shrubs, 9.X.2003, leg. Zerche (DEI, cAss); 2 exs., Mallorca, Serra de Tramuntana, above Fornalutx, 39°48'N, 2°47'E, 800 m, *Quercus ilex* forest, 12.X.2003, leg. Zerche (DEI, cAss). Canary Islands: 2 exs., La Palma, NE El Paso, 28°40'N; 17°51'W, 850 m, 27.XII.2008, leg. Forcke (cAss); 2 exs., La Palma, S Tunel de la Cumbre, 28°39'N, 17°50'W, 990 m, 21.XII.2008, leg. Forcke (cAss); 1 ex., La Palma, 2.7 km SW Brena Baja, 28°37'N, 17°49'W, 1040 m, laurel forest, litter sifted, 25.XI.2008, leg. Schülke (cSch). France: 1 ex., Corsica, Ajaccio, 12.IX.1913, leg. Budtz (NHMD). Sweden: 1 ex., Göteborg, Lilla Delsjön, 30.X.1949, leg. Skovgaard (NHMD); 2 exs., Hallands Län, Dagsås-tr., 23.X.1953, leg. Skovgaard (NHMD). Italy: Trentino-Alto Adige: 3 exs., Valle Ledro (TN), 19.IX.1997, leg. Angelini (NHMD). Lombardia: 1 ex., Valbrona (CO), 16.II.2005, leg. Diotti (NHMD); 1 ex., Val Brembana Valeva (BG), 1180 m, fir forest, 6.VII.2006, leg. Angelini (NHMD); 1 ex., Casteggio (PV), 13.XII.2000, leg. Diotti (NHMD). Veneto: 1 ex., Monte Baldo (VR), 13.IX.1997, leg. Diotti (NHMD); 11 exs., Monti Lessini (VR), Roveré Veronese, 17.I.2007, leg. Diotti (NHMD); 4 exs., Monti Lessini, Valle Squaranto, 11.XI.2006, leg. Diotti (NHMD). Umbria: 1 ex., Monti Sibillini, Piano Grande (PG), 1500 m, beech forest, 24.V.2003, leg. Angelini (NHMD); 4 exs., Gualdo Tadino, S. Santa (PG), 1200 m, beech and hazelnut forest, 28.V.2003, leg. Angelini (NHMD). Abruzzo: 6 exs., Pescasseroli (AQ), passo Diavolo, 1400 m, beech forest, 1.VI.2003, leg. Angelini (NHMD, cAss). Campania: 1 ex., Lago Matese (CE), 1100 m, beech forest, 28.VII.2002, leg. Angelini (cAss). Puglia: 1 ex., Gargano, bosco Manatecco (FG), oak forest, 11.VII.1991, leg. Angelini (NHMD). Basilicata: 3 exs., Pollino, Terranova di Pollino (PZ), Duglia, 16.VI.1985, leg. Angelini (NHMD); 2 exs., Monte Volturino (PZ), 1600 m, beech forest, 29.III.2003, leg. Angelini (NHMD). Slovakia: 3 exs., Smolenice, Smolenice castle, 25.-30.III.2007, leg. Barševskis (cSha, cAss). Hungary: 1 ex., SW Sopron, Brennbergbanya, 47°39'N, 16°29'E, 490 m, mixed forest, 16.X.1998, leg. Zerche (DEI). Serbia: 1 ex., Svrljiške planine, Slivlje, 26.IX.2006, leg. Stévanović (cAss); 1 ex., Radan planina, Davolja, Varoš, 1.VI.2009, leg. Stévanović (cAss). Bulgaria: 1 ex., SW-Pirin, 16 km NE Sandanski, Popina Laka, 1350 m, coniferous forest, 8.IV.2005, leg. Zerche & Behne (DEI); 1 ex., W-Pirin, 14 km E Kresna, Peschtscherata, 41°45'N, 23°19'E, 1350 m, mixed beech and fir forest, 9.IV.2005, leg. Zerche & Behne (cAss). Albania: 1 ex., Korçë, 10 km S Korçë, Mali i Gramozit, 40°31'N, 20°48'E, 1550 m, moist beech forest margin, beech, fern, etc. sifted, partly near temporary stream, 27.V.2010, leg. Assing (cAss); 1 ex., Korçë, 10 km S Korçë, Mali i Gramozit, 40°32'N, 20°48'E, 1570 m, beech forest with poplar and juniper, sifted, 27.V.2010, leg. Assing (cAss). Greece: 2 exs., Imathia, E Vermio, road Séli-Náoussa, 1100 m, 167.VI.1991, leg. Giachino & Vailati (cAss, cVai); 2 exs., Ioannina, Milea, 1200 m, beech forest, 18.V.2005, leg.

Angelini (NHMD); 1 ex., Pieria, Olympos Oros, Lithoro, 800 m, beech forest, 17.V.2005, leg. Angelini (NHMD). Turkey: B u r s a : 7 exs., Uludağ, main road, 1300 m, beech forest, 1.-2.V.1995, leg. Enghoff et al. (NHMD). A f y o n / I s p a r t a : 3 exs., Sultan Dağları, SW Sultandağı, 38°30'N, 31°12'E, 1730 m, 19.IV.2008, leg. Brachat & Meybohm (cAss). K a r a b ü k : 1 ex., pass W Eskipazar, 40°5'N, 33°23'E, 1400 m, beech forest, litter sifted, 26.III.2010, leg. Assing (cAss). K a s t a m o n u : 2 exs., 25 km SE Tosya, Domkayatepe geçidi, 40°56'N, 34°14'E, 1600 m, pine forest with grass and *Juniperus*, litter and grass sifted, 6.IV.2009, leg. Assing (cAss); 3 exs., 40 km NW Kastamonu, Ballıdağ geçidi, 41°34'N, 33°20'E 1270 m, mixed forest (fir, pine, beech), litter sifted, 9.IV.2009, leg. Assing (cAss); 2 exs., 27 km SE Kastamonu, NW Ilgaz geçidi, 41°12'N, 33°58'E, 1480 m, fir forest near stream, litter and moss sifted, 23.III.2010, leg. Assing (cAss); 1 ex., 37 km SE Kastamonu, 15 km N Tosya, Ilgaz geçidi, 41°08'N, 34°04'E, 1660 m, mixed fir and pine forest, litter sifted, 23.III.2010, leg. Assing (cAss); 3 exs., Tosya, Ilgaz geçidi, 3.VI.2003, leg. Janata (cSme, cAss); 1 ex., Tosya env., Ilgaz mts., 1800 m, 4.VI.2003, leg. Schneider (cSme). N e v ş e h i r : 1 ex., Mustafapaşa, Uzengi valley, 38°34'N, 34°52'E, 1140 m, 16.V.2009, leg. Meybohm (cAss); 1 ex., Ürgüp-Develi road, 1550 m, 6.V.1993, leg. Martin (NHMD). Ukraine: 1 ♂, Krym, north slope of Ai Petri mountain, 900 m, beech forest, 20.-24.VII.2001, leg. Koval (cAss). Russia: 1 ♀, Moscow, Sheremet'yevo, 23.IX.2008, leg. Enustschenko (cSha).

The distribution of *O. punctulatus* is of the expansive Holo-Mediterranean type. The species is here reported from Albania for the first time.

#### ***Othius parallelicept* QUEDENFELDT 1882**

**M a t e r i a l e x a m i n e d :** Spain: A n d a l u c i a : 2 exs., Cádiz, 15 km NW Algeciras, 36°13'N, 5°3'W, 60 m, meadow, under stone, 27.XII.2009, leg. Assing (cAss); 1 ex., Cádiz, 15 km NW Algeciras, 36°13'N, 5°33'W, 25 m, loamy pasture, under stone, 27.XII.2009, leg. Assing (cAss); 3 exs., Cádiz, 20 km N Tarifa, 36°09'N, 5°37'W, 160 m, loamy pasture, under stones, 30.XII.2009, leg. Assing & Wunderle (cAss, cWun).

The distribution of this conspicuous and apparently very rare species is confined to Morocco and the extreme southeast of Spain, from where only old records had been known (ASSING 1997b, 1999b). No ecological data were previously available. The above specimens were all collected in pastures from under stones, suggesting that *O. parallelicept* is not a forest species, but inhabits open biotopes.

#### ***Othius strigulosus* WOLLASTON 1854**

**M a t e r i a l e x a m i n e d :** Madeira: 2 exs., Paul da Serra, 23.XI.1980, leg. Enghoff & Martin (NHMD); 1 ex., Ribeiro Frio, 850 m, laurisilva, 17.XI.1980, leg. Enghoff & Martin (NHMD); 2 exs., locality not specified (NHMD).

*Othius strigulosus* is endemic to Madeira.

#### ***Othius jansoni* WOLLASTON 1854**

**M a t e r i a l e x a m i n e d :** Madeira: 1 ex., N Pico Arieiro, 1500-1600 m, 8.XI.2006, leg. Putzer (cAss).

Like the preceding species, *O. jansoni* is endemic to Madeira.

#### ***Othius subuliformis* STEPHENS 1833**

**M a t e r i a l e x a m i n e d :** France: 1 ex., Pyrénées-Orientales, Forêt de Sorede, 700 m, 14.VI.2004, leg. Wolf (cSch); 1 ex., Hte. Garonne, Bagueres de Luchon, Superbagueres, Pic de Cécire, 2000 m, 22.VI.2004, leg. Wolf (cSch); 1 ex., Alpes-Maritimes, Forêt de Turini, Peira Cava,

Grotte de Malpertus env., 1560 m, 27.VI.2008, leg. Brachat (cAss); 2 exs., Hautes-Alpes, Devoluy, Petit Ferrand, 1600-1700 m, *Arctostaphylos* litter, 7.V.1999, leg. Kahlen (TLMFI, cAss). Sweden: 1 ex., Hallands Län, Nösslinge, 15.VIII.1952, leg. Skovgaard (NHMD); 1 ex., same data, but 11.IX.1953 (NHMD); 1 ex., Stockholm, Djurgården, 14.IV.1945, leg. Skovgaard (NHMD); 1 ex., Göteborg, Lilla Delsjön, 30.X.1949, leg. Skovgaard (NHMD). Austria: 3 exs., Tirol, Innsbruck Land, Halltal, Issjoch, 1600 m, 24.VIII.2004, leg. Wolf (cSch, cAss). Germany: 1 ex., Baden-Württemberg, N-Schwarzwald, Kleine Enz, spruce forest, 19.V.2007, leg. Schülke (cSch); 2 exs., Bayern, Lkrs. Garmisch Partenkirchen, Kreuzeck zum Reinthaler Hof, below Hochalm, 1600 m, 18.VIII.2004, leg. Wolf (cSch). Italy: L o m b a r d i a : 1 ex., Cima di Colletta (PV), 22.XI.2000, leg. Diotti (NHMD); 2 exs., Monte Lessina (PV), 11.XI.2000 (NHMD, cAss). Ukraine: 1 ex., Lviv oblast, Ivano-Frankovo district, Yavoriv, 18.V.2004, leg. Gontarenko (cAss).

*Othius subuliformis* has an expansive Atlanto-Mediterranean distribution (ASSING 2003b). The above specimen from Ukraine represents a new country record.

### ***Othius wunderlei* ASSING 1997**

**M a t e r i a l e x a m i n e d :** Spain: C a s t i l l a - L a M a n c h a : 8 exs., Sierra de Segura, ca. 15 km W Yeste, Calar de Sima, 38°21'N, 02°29'W, 1430 m, deep canyon with *Corylus*, grass, moss, and ferns, sifted, 15.III.2008, leg. Assing & Lencina (cAss). M u r c i a : 1 ♂, Yecla, Sierra de Salinas, 29.XI.2003, leg. Lencina (cLen). A n d a l u c í a : 1 ex., Sierra de Segura, 38°14'N, 2°40'W, 1190 m, 1.X.2008, leg. Meybohm (cAss); 14 exs., Cádiz, 25 km NNW Ubrique, Puerto de Galis, 36°34'N, 5°36'W, 400 m, W-exposed oak forest with *Rhododendron*, sifted, 28.XII.2009, leg. Assing & Wunderle (cAss, cWun); 24 exs., Cádiz, 15 km NE Ubrique, Sierra de Grazalema, 36°45'N, 5°27'W, 770 m, calcareous oak forest, sifted, 28.XII.2009, leg. Assing & Wunderle (cAss, cWun); 1 ex., Cádiz, 3 km E Ubrique, Sierra de Grazalema, 36°42'N, 5°26'W, 650 m, calcareous N-slope, sifted, 28.XII.2009, leg. Wunderle (cWun).

The distribution of this species is confined to southern Spain; for a map see ASSING (2005a).

### ***Othius brevipennis* KRAATZ 1857**

**M a t e r i a l e x a m i n e d :** Austria: N i e d e r ö s t e r r e i c h : 1 ex., Raxalpe, 47°45'N, 15°41'E, 670 m, 3.V.2008, leg. Assing (cAss); 1 ex., Hoher Wechsel, W Mariensee, 47°31'N, 15°55'E, 1705 m, spruce forest with *Vaccinium* undergrowth, 17.V.2003, leg. Zerche (DEI); 2 exs., Schneeberg, W Puchberg, Kaiserstein, 47°45'N, 15°51'E, 2050 m, 18.V.2003, leg. Zerche (DEI). S t e i e r m a r k : 3 exs., Schneecalpe, NW Kapellen, Windberg, peak, 47°42'N, 15°36'E, 1900 m, 19.V.2003, leg. Zerche (DEI); 5 exs., Schneecalpe, NW Kapellen, E Fartel, 47°41'N, 15°36'E, 1650 m, *Alnus viridis*, 19.V.2003, leg. Zerche (DEI, cAss); 1 ex., Stubalpe, Rappoldkogel, NW Hirschegg, 47°05'N, 14°53'E, 1920 m, pasture, 19.VII.2003, leg. Zerche (cAss); 1 ex., Stubalpe, Rappoldkogel, NW Hirschegg, 47°04'N, 14°53'E, 1850 m, *Alnus viridis*, 19.VII.2003, leg. Zerche (DEI).

*Othius brevipennis* replaces *O. subuliformis* in the eastern Alps and adjacent regions. For a distribution map see ASSING (2003b).

### ***Othius korgei* COIFFAIT 1965**

**M a t e r i a l e x a m i n e d :** Turkey: S a m s u n : 4 exs. [partly teneral], 26 km NNE Havza, 41°11'N, 35°46'E, 800 m, *Quercus-Carpinus* forest, litter sifted, 19.VII.2008, leg. Assing (cAss); 3 exs. [teneral], 31 km NE Havza, 41°12'N, 35°52'E, 670 m, beech forest, litter sifted, 19.VII.2008, leg. Assing (cAss); 6 exs. [partly teneral], 20 km S Samsun, NE Asarcik, 41°07'N, 36°17'E, 840 m, *Quercus-Carpinus* forest with *Rhododendron*, litter sifted, 20.VII.2008, leg. Assing (cAss); 4 exs. [partly teneral], 40 km W Samsun, 41°16'N, 35°52'E, 890 m, beech forest, litter sifted, 21.VII.2008, leg. Assing (cAss); 4 exs. [partly teneral], 41 km W Samsun, 27 km S Bafra, 41°19'N, 35°51'E, 220 m, stream valley, beech forest with scattered *Alnus*, litter sifted, 21.VII.2008, leg. Assing

(cAss). O r d u : 2 exs. [teneral], road Ünye-Akkuş, 18 km NE Akkuş, 40°56', 37°07', 920 m, mixed deciduous forest (predominantly *Fagus*), litter sifted, 15.VII.2008, leg. Assing (cAss).

*Othius korgei* has been recorded only from Samsun and Ordu provinces in northeastern Anatolia (ASSING 1997b, 2003b).

### ***Othius transsilvanicus* GANGLBAUER 1895**

**M a t e r i a l e x a m i n e d :** Romania: 2 exs., Moldavia, Mt. Rarau, 1500 m, deciduous forest, moss sifted, 29.V.2008, leg. Rougemont (cRou); 1 ex., Munții Rodnei, Borșa, Mt. Gargalau, 1900 m, 23.VI.2008, leg. Ádám (HNHM); 1 ex., jud. Maramureș, Rodna Mts., Borșa, 47°34'N, 24°49'E, 1670 m, 26.IX.2008, leg. Dányi et al. (HNHM); 4 exs., jud. Maramureș, Borșa, Munții Rodnei, Izvorul Bistriței, 1700 m, alpine pasture, sifted, 16.VI.2006, leg. Grabant et al. (HNHM, cAss); 3 exs., jud. Maramureș, Borșa, Munții Rodnei, Preluca Cerbului, 47°39'N, 24°52'E, 1700 m, 23.V.2007, leg. Csuzdi et al. (HNHM, cAss); 1 ex., jud. Maramureș, Borșa, Munții Maramureșului, Fântina Stanchi, 1600 m, mugo pine stands, sifted, leg. Grabant et al. (HNHM); 1 ex., jud. Maramureș, Borșa, Munții Rodnei, Săcel, Izvorul Izei, 850 m, stream valley, sifted, 16.VI.2006, leg. Grabant et al. (HNHM); 4 exs., jud. Bistrița-Năsăud, Munții Rodnei, 47°30'N; 24°55'E, 1790 m, pitfall trap, 27.V.-20.VI.2007, leg. Makranczy (HNHM, cAss); 3 exs., jud. Prahova, Munții Bucegi, W Vîrful cu Dor, 45°21'N, 25°29'E, 1950 m, near snow, 27.VI.2006, leg. Makranczy (HNHM).

This species is endemic to - and rather common in - the Carpathians (ASSING 1997b).

### ***Othius crassus* MOTSCHULSKY 1858**

**M a t e r i a l e x a m i n e d :** Austria: Niederösterreich : 7 exs., Hoher Wechsel, W Mariensee, 47°31'N, 15°55'E, 1705 m, spruce forest with *Vaccinium* undergrowth, 17.V.2003, leg. Zerche (DEI, cAss); 1 ex., Hoher Wechsel, W Mariensee, 47°32'N, 15°32'E, 1690 m, 17.V.2003, leg. Zerche (DEI). Steiermark : 1 ex., Stubalpe, Rappoldkogel, NW Hirscheegg, 47°05'N, 14°53'E, 1920 m, pasture, 19.VII.2003, leg. Zerche (DEI); 1 ex., Eisenerzer Alpen, Eisenerzer Reichenstein, Grüblzinken, 47°31'N, 14°57'E, 1500-1550 m, *Larix* forest with *Alnus viridis*, 21.V.2003, leg. Zerche (DEI); 1 ex., Gstoder, N St. Ruprecht ob Murau, peak, 47°09'N, 14°00'E, 2110-2140 m, 21.VII.1999, leg. Zerche (DEI). Kärnten : 1 ex., Wöllaner Nock, N Arriach, peak, 46°47'N, 13°50'E, 2130 m, 9.VII.2003, leg. Zerche (DEI); 2 exs., Gartnerkofel, S peak, 46°34'N, 13°18'E, 2070 m, *Carex firma*, under stones, 27.V.2003, leg. Zerche (DEI, cAss).

The distribution of *O. crassus* is confined to the eastern Alps; for a distribution map see (ASSING 2003b).

### ***Othius permutatus* ASSING 1997**

**M a t e r i a l e x a m i n e d :** Romania: 1 ex., Moldavia, Mt. Rarau, 1500 m, deciduous forest, moss sifted, 29.V.2008, leg. Rougemont (cRou); 1 ex., jud. Maramureș, Borșa, Munții Maramureșului, Fântina Stanchi, 1600 m, mugo pine stands, sifted, leg. Grabant et al. (HNHM); 1 ex., jud. Maramureș, Borșa, Munții Rodnei, Săcel, Izvorul Izei, 850 m, stream valley, sifted, 16.VI.2006, leg. Grabant et al. (HNHM); 1 ex., jud. Maramureș, Lăpuș mts., Văleni, Kígyós Lake, 47°43'N, 24°02'E, 970 m, beech forest, 23.V.2006, leg. Dányi et al. (HNHM); 1 ex., jud. Maramureș, Munții Gutâi, La Secatura, 900 m, beech forest, 25.VII.2007, leg. Grabant et al. (cAss).

*Othius permutatus* is endemic to the Carpathians except for the southwestern parts (ASSING 1997b).



***Othius serratus* ASSING 1997**

**M a t e r i a l e x a m i n e d :** Georgia: 1 ex., Kutaisi env., Sataflia reserve, mixed forest, 18.VI.2006, leg. Chaladze (cAss).

The above specimen represents the first record since the original description.

***Othius ponticus* COIFFAIT 1978**

**M a t e r i a l e x a m i n e d :** Turkey: 7 exs., Rize, 32 km SSE Ardeşen, SE Ayder, 40°56'N, 41°09'E, 1730 m, mixed forest (*Alnus*, *Picea*) with undergrowth (*Rhododendron*, *Rubus*), sifted, 10.VII.2008, leg. Assing (cAss).

*Othius ponticus* has been recorded only from Rize and Artvin provinces in northeastern Anatolia and from the environs of Batumi in southwestern Georgia (ASSING 1997b, 2003b, 2005a, 2008).

***Othius chrysurus* REITTER 1891 (Figs 1-9)**

**M a t e r i a l e x a m i n e d :** Afghanistan: 2 exs., Hindu Kush, Salang mountain range, NE Salang pass, 35°27'N, 68°58'E, 2300-2600 m, small valley, 6.XI.2009, leg. Reuter (cFel, cAss).

The above specimens represent the first record of both the genus and the species from Afghanistan. Previously, *O. chrysurus* was known from Kazakhstan, Tajikistan, and Uzbekistan. The external characters and the aedeagus of a male from Afghanistan are illustrated in Figs 1-9. The figures of the aedeagus in ASSING (1997b) show the lateral internal structures in a somewhat untypical position.

***Othius latus latus* SHARP 1874**

**M a t e r i a l e x a m i n e d :** China: 2 exs., Qinghai province, Huangzhong env., Taer Si [lamasery] [=Kumbui], 36°29'N, 101°34'E, 2665-2780 m, 17.VII.2995, leg. Hájek, Král & Růžička (NMP, cAss).

This subspecies is widespread in the Eastern Palaearctic region, its distribution ranging from China to Japan (ASSING 1999a).

***Othius medius* SHARP 1874**

**M a t e r i a l e x a m i n e d :** China: 1 ex., Shanghai, 26.V.1944, leg. Suenson (NHMD).

Like the preceding species, *O. medius* is one of the most widespread representatives of the genus in the Eastern Palaearctic region (ASSING 1999a).

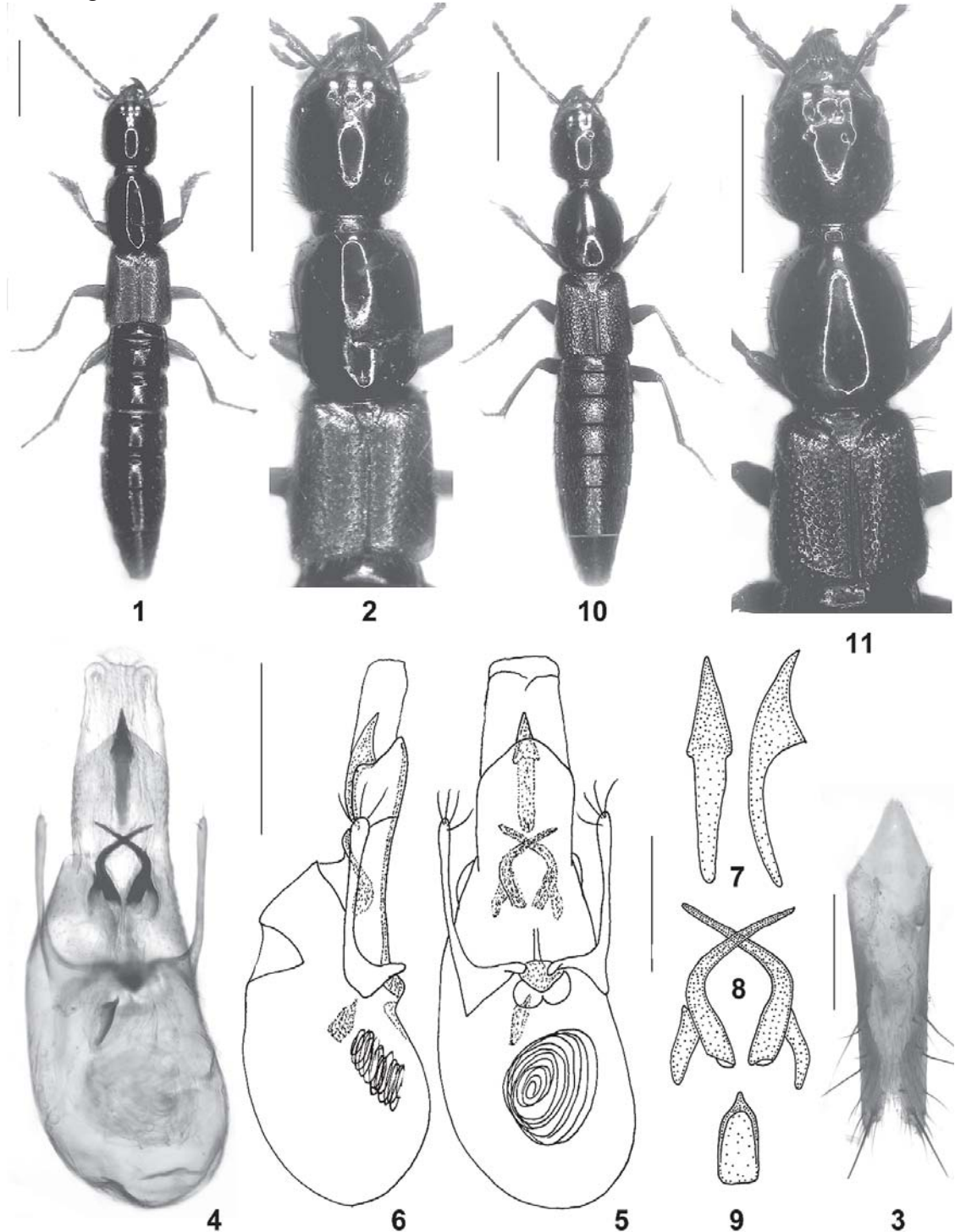
***Othius rosti* BERNHAUER 1907**

**M a t e r i a l e x a m i n e d :** Russia: 1 ex., E-Siberia, Tshitinskaja Oblast, Krasniy Tshikojsky Rajon, 42 km W Jamarovka, Mogzon [50°35'N, 109°48'E], 24.VIII.1998, leg. Shavrin (cSha); 1 ♀, East Yakutiya, Suntar-Khalta mts., Tyry river valley, Kidyarki river near Khalya river, 800-950 m, 11.-18.VIII.1991, leg. Alexeev (cSha).

The vast distribution of *O. rosti* ranges from the Baikal region and North Korea to Japan (ASSING 1999a).

***Othius fibulifer fibulifer* ASSING 1999**

**Material examined:** China: 1 ex., Yunnan, Dali Bai Aut. Pref., Zhemu Shan, 7 km SW Xiaguan, 25°32-33'N, 100°10-11'E, 2870-2970 m, shrubs with oak, bamboo, rhododendron, litter



**Figs 1-11:** *Othius chrysurus* REITTER (1-9) and *O. glaber* nov.sp. (10-11): (1, 10) habitus; (2, 11) forebody; (3) male sternite IX; (4-5) aedeagus in ventral view; (6) aedeagus in lateral view; (7) apical internal structure in ventral and in lateral view; (8) lateral internal structures; (9) basal internal structure. Scale bars: 1-2, 10-11: 2.0 mm; 3-6: 0.5 mm; 7-9: 0.2 mm.

This subspecies is apparently rather common in the Daxue Shan, where it is endemic (ASSING 1999a, 2003a, 2005a, 2008).

***Othius atavus* ASSING 1999**

**Material examined:** China: 1 ex., Yunnan, Pu'er Pref., Ailao Shan, 37 km NW Jingdong, 24°45'N, 100°41'E, 2300 m, degraded forest, litter sifted, 13.VIII.2009, leg. Wrase (cSch).

Previously only three specimens were known of *O. atavus*, all of them from Yunnan (ASSING 1999a, 2008).

***Othius furcillatus* ASSING 2005**

**Material examined:** China: 1 ex., Yunnan, Dali Bai Aut. Pref., Diancang Shan, pass 43 km NW Dali, 26°00'N, 99°52'E, 3100 m, pasture with shrubs, sifted, 23.VIII.2009, leg. Schülke (cSch).

This species has been recorded only from the Diancang Shan, Yunnan (ASSING 2005a, 2005b).

***Othius mirus* ASSING 2005**

**Material examined:** China: 10 exs. [partly teneral], Sichuan, Emei Shan, 29°33.6'N, 103°20.6'E, 1800-2400 m, sifted, 27.VI.-5.VII.2009, leg. Grebennikov (cSme, cAss).

The above specimens represent the first record of this remarkable species since its original description, which is based on a single male from the Emei Shan (ASSING 2005a). Some of the beetles listed above are more or less distinctly teneral. The previously unknown female secondary sexual characters are as follows: protarsomere I-IV moderately dilated, much less so than in the male; tergite X posteriorly with approximately 15 yellowish modified marginal setae.

***Othius glaber* nov.sp. (Figs 10-17)**

**Type material:** **Holotype** ♂: "China: Yunnan, Baoshan Pref., Gaoligong Shan, W pass, 32 km SE Tengchong, 1600 m, 24°51'11"N, 98°44'27"E, cleft with devast. primary forest, litter & mushr. sifted, 28.VIII.2009, leg. M. Schülke [CH09-14] / Holotypus ♂ *Othius glaber* sp. n. det. V. Assing 2010" (cAss). **Paratype** ♀: same data as holotype (cSch).

**Description:** Measurements (mm) and ratios (holotype, paratype): HL: 1.43, 1.53; HW: 1.28, 1.40; PW: 1.46, 1.59; PL: 1.74, 1.89; EL: 1.25, 1.37; TiL: 1.43, 1.49; TaL: 1.19, 1.16; TL: 10.6-11.3; HL/HW: 1.12, 1.09; HW/PW: 0.88, 0.88; PL/PW: 1.19, 1.19; EL/PL: 0.72, 0.73; TiL/TaL: 1.21, 1.29.

**Habitus** as in Fig. 10. **Coloration:** body black, except for the abdominal apex (narrow posterior margin of segment VII, broad posterior margin of segment VIII, segments IX-X reddish-brown); legs dark-brown to blackish-brown with reddish to reddish-brown tarsi; antennae dark-brown, with the base of antennomere II reddish and the apical half of antennomere XI dark-yellowish.

**Head** (Fig. 11) weakly widened posteriorly, oblong, and somewhat narrower than pronotum (see ratios HL/HW and HW/PW); anterior pair of frontal punctures distinct, without additional smaller punctures; posterior pair of frontal punctures present, distance between these punctures slightly greater than that between anterior punctures; median

and posterior dorsal area impunctate, except for very sparse micropunctuation; lateral portions with coarse, but rather sparse punctuation; transverse microsculpture present, but very shallow. Eyes (Fig. 12) of moderate size, approximately half the length of postocular region in dorsal view, or nearly so.

Pronotum (Fig. 11) oblong (see ratio PL/PW); discal punctation pattern similar to that of most other Eastern Palaearctic congeners; posterior discal puncture (i. e., puncture near posterior angle) separated from lateral margin by a distance of approximately twice its diameter and even more distant from posterior margin (Fig. 13); microsculpture extremely shallow, partly almost obsolete, finely transverse.

Elytra distinctly shorter than pronotum (see ratio EL/PL); punctuation rather dense and well-defined (Fig. 11); interstices without microsculpture, glossy, on average slightly narrower than diameter of punctures. Hind wings present. Legs of moderate length (see measurements).

Abdomen slightly narrower than elytra; punctuation relatively coarse and dense, coarser on anterior than on posterior portions of tergites; interstices with very shallow microsculpture and glossy; posterior margin of tergite VII with palisade fringe.

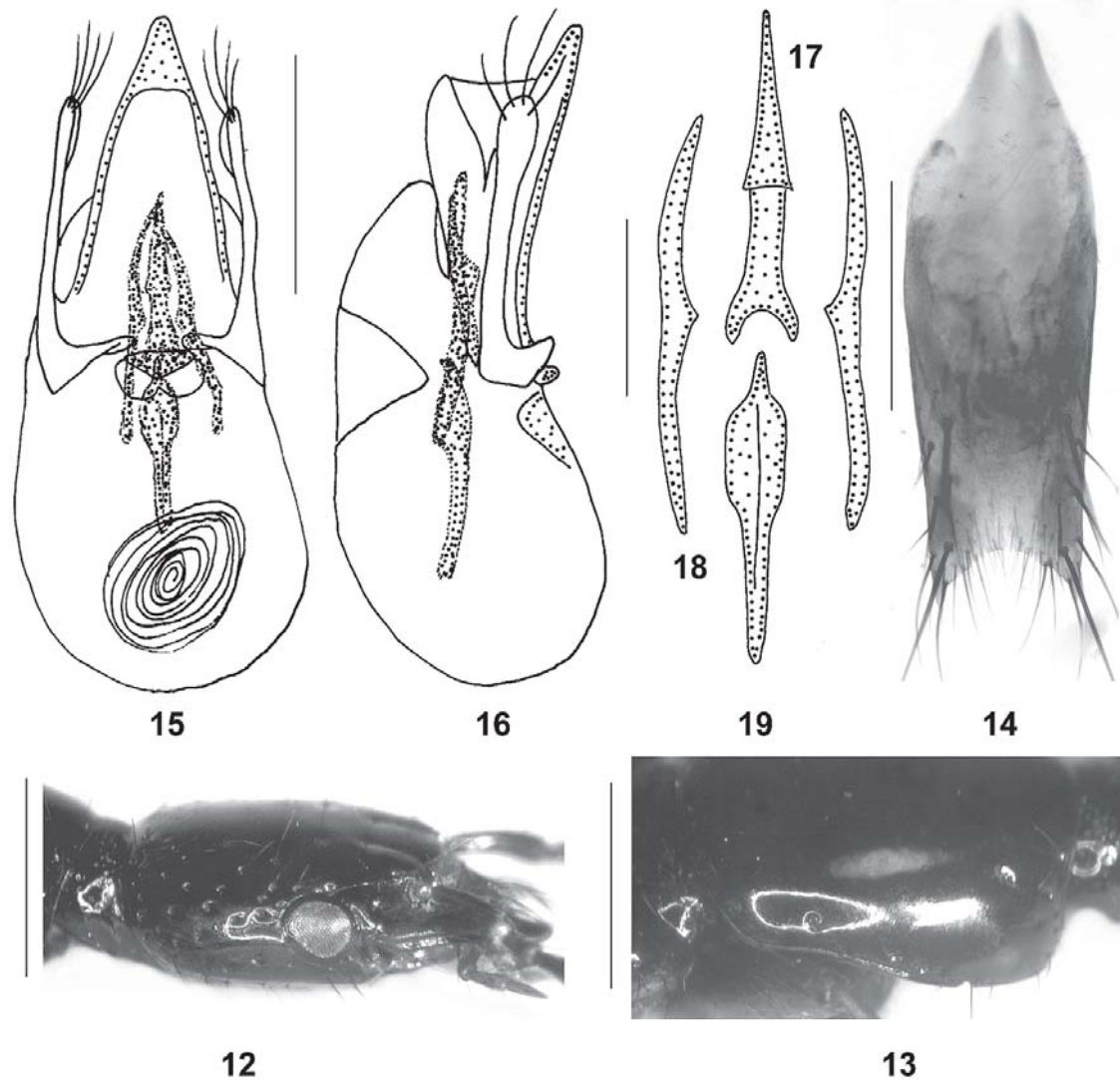
♂: protarsomeres I-IV strongly dilated; sternites V-VII unmodified; sternite VIII posteriorly shallowly impressed, posterior margin weakly concave; lateral tergal sclerites IX short, apically without tooth-like processes, not reaching posterior margin of tergite X; sternite IX moderately slender, anteriorly bifid, posterior margin concave, postero-lateral angles with spine-like process (Fig. 14); aedeagus 1.4 mm long, ventral process moderately slender; parameres apically distinctly dilated, each with 4 apical setae (Figs 15-16); internal sac with 4 sclerotized internal structures: a long median basal structure with a distinct median carina (Fig. 19), a median apical structure of similar length and of characteristic shape (Fig. 17), and a pair of very long and slender lateral structures (Fig. 18); flagellum thin, transparent, and with numerous coils.

♀: protarsomeres I-IV dilated, but less so than in ♂; tergite X with weakly modified submarginal setae, these setae long, slightly stouter than the other setae of the tergal surface, but apically not curved.

**E t y m o l o g y :** The specific epithet (Latin, adjective: glabrous) refers to the glossy appearance of the body.

**C o m p a r a t i v e n o t e s :** In the key to the *Othius* species of the Eastern Palaearctic region east of the Himalaya in ASSING (1999a), *O. glaber* would key out at couplet 30, together with the similar *O. lubricus* ASSING 1999, which too is known only from Yunnan (ASSING 1999, 2003a). From this species, *O. glaber* is readily distinguished by the following characters: the uniformly blackish coloration of the forebody (*O. lubricus*: at least elytra dark-brown); sparser punctuation of the lateral portions of the head; distinctly smaller eyes (*O. lubricus*: much more than half the length of postocular region in dorsal view); the absence of additional punctures near the anterior frontal punctures (*O. lubricus*: such punctures are present); coarser and sparser punctuation of the elytra (*O. lubricus*: interstices on average much narrower than diameter of punctures); coarser and much sparser punctuation of the abdomen (difference best visible on tergites V-VII); the posteriorly less strongly concave male sternite IX; the differently shaped ventral process of the aedeagus (*O. lubricus*: apically abruptly narrowed and more acute in ventral view); the different number and shapes of the internal structures of the aedeagus (*O. lubricus*: second pair of lateral structures present; basal median structure

not carinate and apically truncate; lateral structures much shorter; apical median structure more strongly curved in lateral view). For illustrations of the sexual characters of *O. lubricus* see ASSING (1999a).



**Figs 12-19:** *Othius glaber* nov.sp.: (12) head in lateral view; (13) lateral portion of pronotum in dorso-lateral view; (14) male sternite IX; (15) aedeagus in ventral view; (16) aedeagus in lateral view; (17) apical internal structure; (18) lateral internal structures; (19) basal internal structure. Scale bars: 12-13: 1.0 mm; 14-16: 0.5 mm; 17-19: 0.2 mm.

**Distribution and bionomics:** The type locality is situated in the Gaoligong Shan, western Yunnan, China. The specimens were sifted from leaf litter in a degraded primary forest at an altitude of 1600 m.

***Atrecus affinis* (PAYKULL 1789)**

**Material examined:** Albania: 1 ex., Elbasan, 13 km SE Elbasan, Mali i Shpatit, 41°03'N, 20°13'E, 1500 m, beech forest margin, sifted, 22.V.2010, leg. Assing (cAss); 1 ex., Librazhd, 25 km ESE Elbasan, Mali i Polisit, 41°04'N, 20°22'E, 1700 m, grassy calcareous dolina, near snowfield, sifted, 23.V.2010, leg. Assing (cAss).

***Atrecus longiceps* (FAUVEL 1873)**

Material examined: Sweden: 1 ex., Ångermanland, Ramsele, 5.VI.1948, leg. Skovgaard (NHMD); 1 ex., same data, but 24.V.1948 (cAss).

***Atrecus pilicornis* (PAYKULL 1790)**

Material examined: Norway: 2 exs., Vågå, 6.IX.1956, leg. Skovgaard (NHMD); 1 ex., same data, but 1.IX.1956 (NHMD). Sweden: 1 ex., Ångermanland, Ramsele, 2.VI.1948, leg. Skovgaard (cAss).

***Atrecus macrocephalus* (NORDMANN 1837)**

Material examined: U. S. A.: Alaska: 1 ex., Anchorage, Rabbit Creek Valley, mixed deciduous forest, 6.VII.2008, leg. Renner (cAss); 2 exs., Kenai Peninsula, Seward, Lowell Point, forest margin, 15.VII.2008, leg. Renner (cAss, cRen).

### Acknowledgements

I am indebted to the colleagues listed in the material section for the loan of material under their care. In particular, I am grateful to Michael Schülke for the generous gift of the holotype of *Othius glaber*. Benedikt Feldmann (Münster) proof-read the manuscript.

### Zusammenfassung

*Othius glaber* nov.sp. (China: Yunnan) wird beschrieben, abgebildet und von dem ähnlichen *O. lubricus* ASSING 1999 unterschieden. Für *O. chrysurus* REITTER 1891 werden neue Abbildungen der äußeren Morphologie und der männlichen Geschlechtsmerkmale gegeben. Weitere Nachweise von 30 Othiinen-Arten und -Unterarten werden gemeldet, darunter einige Erstnachweise und der erste Nachweis der Gattung *Othius* STEPHENS 1829 aus Afghanistan.

### References

- ASSING V. (1997a): The species of *Othius* STEPHENS, 1832 [recte: 1829] of the Canary Islands (Coleoptera, Staphylinidae, Xantholininae). — *Vieraea* **25** (1996): 103-115.
- ASSING V. (1997b): A revision of *Othius* STEPHENS, 1829. III. The species of the Western Palaearctic region exclusive of the Atlantic Islands (Coleoptera, Staphylinidae: Xantholininae). — *Nova Supplementa Entomologica*, Berlin **10**: 3-130.
- ASSING V. (1998): A revision of *Othius* STEPHENS. V. The species of the Himalayan region (Coleoptera: Staphylinidae, Xantholininae). — *Beiträge zur Entomologie*, Berlin **48** (1): 293-342.
- ASSING V. (1999a): A revision of *Othius* STEPHENS, 1829. VII. The species of the Eastern Palaearctic region east of the Himalayas (Coleoptera: Staphylinidae). — *Beiträge zur Entomologie*, Berlin **49** (1): 3-96.
- ASSING V. (1999b): A revision of *Othius* STEPHENS (Coleoptera, Staphylinidae). VIII. Further records, new species, and a new synonym. — *Linzer biologische Beiträge* **31** (2): 661-691.

- ASSING V. (2003a): A revision of *Othius* STEPHENS. IX. New taxa, new synonyms, additional records, and a checklist of species (Coleoptera, Staphylinidae, Staphylininae, Othiini), pp. 727-752. — In: CUCCODORO G. & R.A.B. LESCHEN (eds), Systematics of Coleoptera: Papers celebrating the retirement of Ivan Löbl. Memoirs on Entomology International Vol. 17, Associated Publishers, Gainesville, Florida.
- ASSING V. (2003b): A revision of Othiini. XIII. Horizontal and vertical distribution of *Othius*, new species, and additional records (Coleoptera: Staphylinidae: Staphylininae). — Entomological Problems 33: 69-88.
- ASSING V. (2005a): A revision of Othiini. XIV. New species, new synonyms, and new records (Insecta: Coleoptera: Staphylinidae) — Entomological Problems 35: 51-67.
- ASSING V. (2005b): A revision of Othiini. XV. Three new *Othius* species from China and additional records (Insecta: Coleoptera: Staphylinidae). — Entomological Problems 35: 137-146.
- ASSING V. (2008): A revision of Othiini. XVI. Four new species of *Othius* from the Himalaya and China, and additional records (Coleoptera: Staphylinidae, Staphylininae). — Koleopterologische Rundschau 78: 245-263.
- ASSING V. & P. WUNDERLE (1995). A revision of the Madeiran species of the genus *Othius* STEPHENS (Coleoptera: Staphylinidae). — Boletim do Museu Municipal do Funchal 45 (1993): 53-65.

Author's address: Dr. Volker ASSING  
Gabelsbergerstr. 2  
D-30163 Hannover, Germany  
E-mail: [vassing.hann@t-online.de](mailto:vassing.hann@t-online.de)