

Linzer biol. Beitr.	50/1	225-228	27.7.2018
---------------------	------	---------	-----------

First record of a native *Atomaria* STEPHENS, 1829 (Coleoptera: Cryptophagidae) from the Neotropical Region

Jens ESSER

A b s t r a c t : One new species of *Atomaria* STEPHENS, 1829, *Atomaria schmidli* nov.sp., from Ecuador is described.

K e y w o r d s : Cryptophagidae, *Atomaria*, Neotropical Region, Ecuador, new species.

Introduction

Previously, the genus *Atomaria* STEPHENS, 1829 was known from the Holarctic Region only. Further two species were described from the Afrotropical Region (SCOTT 1936; JOHNSON 1968) and two from the Oriental Region (ESSER 2018). In the Americas, *Atomaria* was known only from the Nearctic region, mainly from the northern states of the US and Canada, and less frequent in the southern states. For Mexico, no native species is recorded. Only the cosmopolitan *Atomaria lewisi* REITTER, 1877 is widespread in the southern states of the US and also reaches the neotropical regions of Mexico.

Material and methods

The material examined is deposited in the following collections:

MFNB.....Museum für Naturkunde Berlin, Germany
cES.....author's private collection, Berlin, Germany

The morphological studies were conducted using a Euromex DZ 1605 and Euromex BB.1153.PLI. Photographs were created with a ToupCam 14MP (ToupTek).

Body length was measured from the head to the apex of the elytra, length of pronotum in the middle, broadness on the broadest part.

Description of new species

***Atomaria schmidli* nov.sp.**

T y p e m a t e r i a l : Holotype ♂: "Ecuador, 3.10.2007, Cajanuma, Paramo, Prov. Loja, 3000 m NN, barkspray, J. Schmidl" [MFNB]. Paratypes: 1 ex. with the same data as the holotype [cES]; 1 ex.: "Ecuador, 29.09.2008, Cajanuma, Paramo, Prov. Loja, 3000 m NN, barkspray, J. Schmidl" [cES]; 1 ex.: "Ecuador, 1.10.2008, Cajanuma, Paramo, Prov. Loja, 3000 m NN,

barkspray, J. Schmidl" [cES]; 2 ex.: "Ecuador, Prov. Loja, Cajanuma 3000 m NN, Podocarpus NP, barkspray 2009 / 01.09." [cES]; 1 ex.: "Ecuador, Prov. Loja, Cajanuma 3000 m NN, Podocarpus NP, barkspray 2009 / 07.09." [cES].

E t y m o l o g y : The specific epithet points on Jürgen Schmidl (Nuremberg), who collected all specimens.

D e s c r i p t i o n : Male, 1,7 mm, hind wings well developed. Brown, covered sparsely the yellow hairs, hairs decumbent. Legs and antennae somewhat lighter (some specimens are dark brown). Antennae slender with club not well developed, segments 9, 10 and 11 little broader than 7. Segments 2, 3, 4, 5, 6 and 8 smaller, segment 1 broader. Segment 1 long, slightly curved. Space between antennae less broad as segment 1 long (*Atomaria* s. str.). The tip of segment 1 is reaching the eyes. Legs slender and without any features. Head with eyes relatively extended but not convex. Pronotum with rounded margin, broadest behind the middle. Margin before the middle more straight, behind the middle rounded. Pronotum moderately punctate, with puncture diameter of the same size of the distance between the puncture. Elytra elongate, somewhat broader than pronotum. Puncture on elytra (on basal third) like on pronotum.

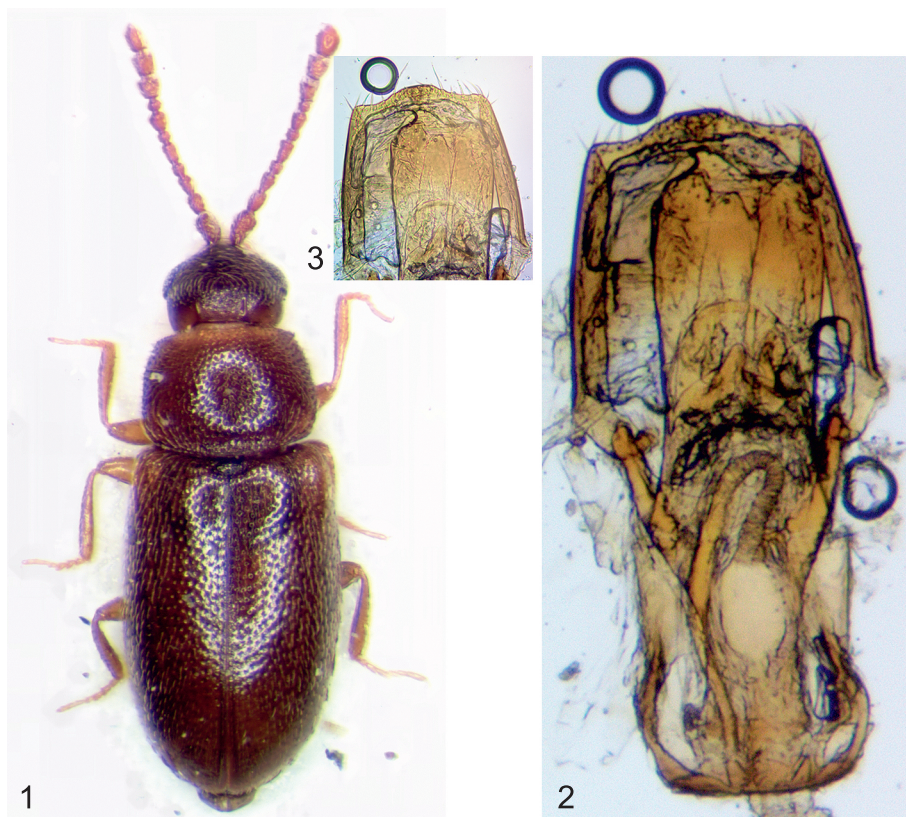


Fig. 1-3: *Atomaria schmidli* nov.sp. (1) habitus, (2) aedoeagus, (3) tip of aedoeagus.

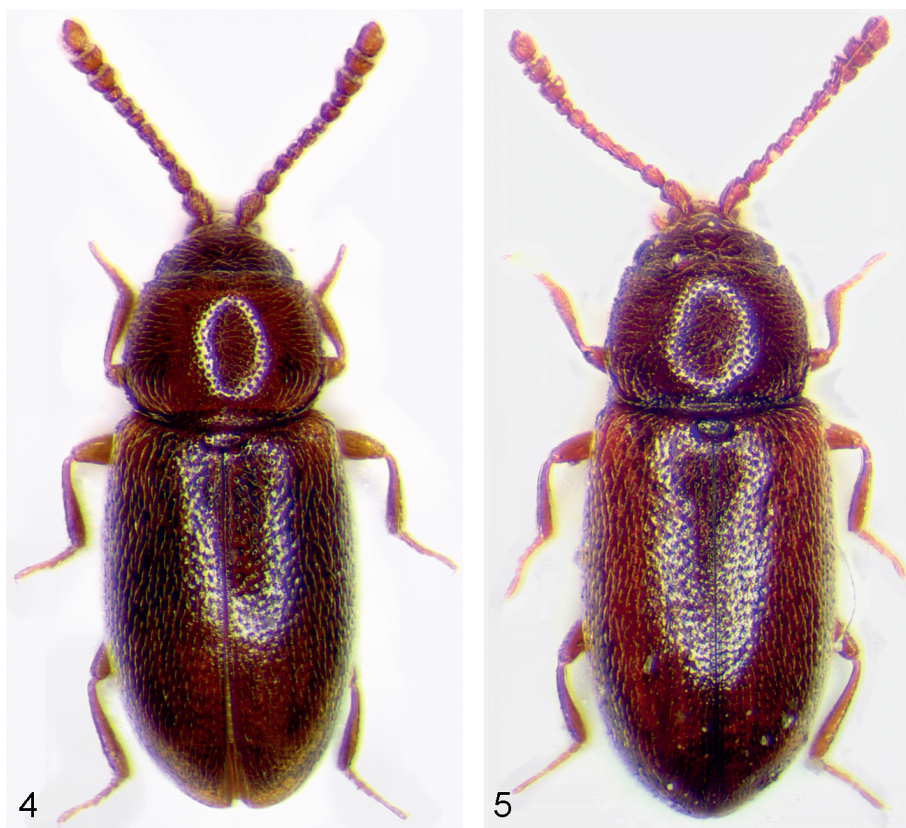


Fig. 4-5: Habitus of (4) *Atomaria bella* REITTER, 1875, (5) *Atomaria elongatula* ERICHSON, 1846.

C o m m e n t : The new species resembles to a few nearctic species, e. g. *Atomaria nigricollis* CASEY, 1900, *A. patens* CASEY, 1900, but it is well distinguished by its slender antennae with clubs slightly separated. The nearctic *Atomaria* need revision and it is not possible to declare anything about Nearctic *Atomaria*. Further, *A. schmidli* resembles to palaeartic species, e.g. *A. abietina* J.R. SAHLBERG, 1888, *A. bella* REITTER, 1875 (fig. 4) or *A. elongatula* ERICHSON, 1846 (fig. 5).

Acknowledgement

I wish to thank my friend Dr. Jürgen Schmidl for any help and support the last years and for the material examined in this paper.

Zusammenfassung

Eine neue Art der Gattung *Atomaria* STEPHENS, 1829, *Atomaria schmidli* nov.sp., aus Ecuador wird beschrieben. Sie stellt die erste aus der Neotropischen Region bekannt gewordene endemische Vertreterin der Gattung dar.

References

- ESSER J. (2018): Two new *Atomaria* STEPHENS, 1829 (Coleoptera: Cryptophagidae) from the Oriental Region with remarks on further *Atomaria* species. — Linzer biologische Beiträge **50** (1): 229-233.
- JOHNSON C. (1968): Some interesting species of *Atomaria* STEPHENS (Col., Cryptophagidae) in the British Museum. — The Entomologist **101**: 228-232.
- SCOTT H. (1936): Coleoptera associated with the giant Lobelias and arborescent Senecios of eastern Africa. — Journal of the Linnean Society of London (Zoology) **39**: 235-284.

Author's address:

Jens ESSER
Fagottstraße 6
D-13127 Berlin, Germany
E-mail: jens_esser@yahoo.de

ZOBODAT - www.zobodat.at

Zoologisch-Botanische Datenbank/Zoological-Botanical Database

Digitale Literatur/Digital Literature

Zeitschrift/Journal: [Linzer biologische Beiträge](#)

Jahr/Year: 2018

Band/Volume: [0050_1](#)

Autor(en)/Author(s): Esser Jens

Artikel/Article: [First record of a native Atomaria STEPHENS, 1829 \(Coleoptera: Cryptophagidae\) from the Neotropical Region 225-228](#)