

Linzer biol. Beitr.	52/2	963-966	Februar 2021
---------------------	------	---------	--------------

***Cryptophagus peloponnesicus* nov.sp. (Cryptophagidae) from Peloponnese, Greece**

Jens ESSER

Abstract: One new species of *Cryptophagus* HERBST, 1792 from Greece is described.

Key words: Cryptophagidae, *Cryptophagus*, Palearctic Region, Greece, new species.

Introduction

Studying many Cryptophagidae from Greece results in one undescribed species of *Cryptophagus* HERBST, 1792 among a lot of well known and widespread species. The new species was collected in high altitudes in mountain ranges of the Peloponnese peninsula (Greece) between 1190 and 1540 m. The new species is wingless and was collected from litter by sifting or pitfall traps. The distribution may be restricted to the northern mountains of the Peloponnese peninsula.

Material and methods

The material examined is deposited in the following collections:

NMENaturkundemuseum Erfurt, Germany

cES.....author's private collection, Berlin, Germany

The morphological studies were conducted using a Euromex DZ 1605 and Euromex BB.1153.PLI. Photographs were created with a TouPCam 16MP (TouPCam).

Body length was measured from the head to the apex of the elytra, length of pronotum in the middle, broadness on the broadest part.

Description of new species

***Cryptophagus peloponnesicus* nov.sp.** (figs 1, 2)

Type material: Holotypus ♂: "N38°00'55 E22°10'10 (5). GR Peloponnes 13.4.2017, Mt. Helmon, 1370 m, leg. Brachat & Meybohm" [cES]. "Paratypes: 1♂ "Greece, Peloponnes, Mt. Erymathos, Kaletzi SE, Abies cephalonica forest, BF, HF, N37°56'55,5", E21°46'14,6", 34 (14), 25.04.-(+). 03.06.2007, 1.190 n üNN, leg. Schnitter" [NME]; 1♀ "GR Corinthia 1540 m, Killini Oros, *A. cephalon.*, 37°56.703 22°25.781, leg. Dr. J. Schmidl" [cES].

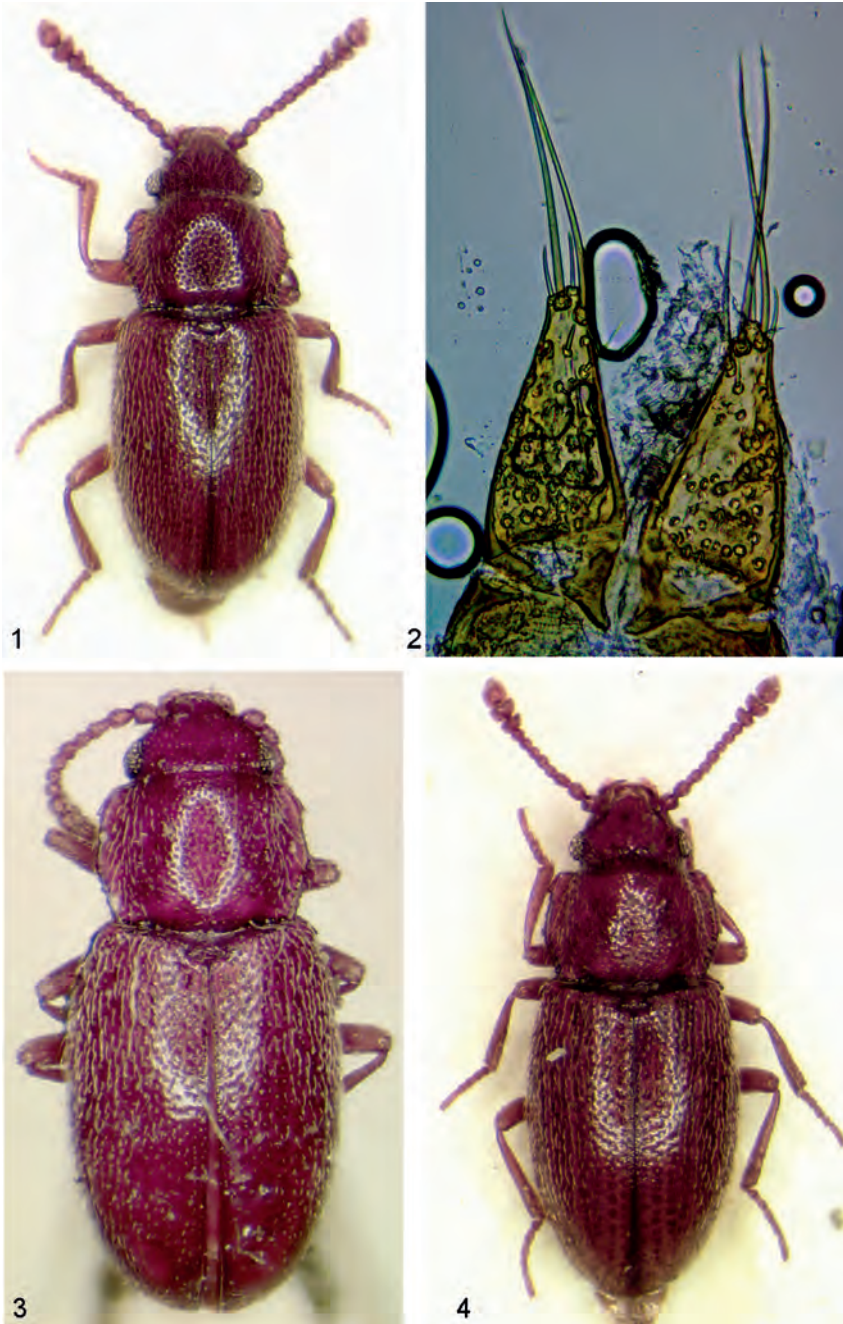


Fig. 1-2: (1) *Cryptophagus peloponnesicus* nov.sp., holotype, habitus; (2) parameres. **Fig. 3-4:** (3) *Cryptophagus axillaris* REITTER, 1875, Romania, habitus; (4) *Cryptophagus brisouti* REITTER, 1874.



Fig. 5-6: (5) *Cryptophagus bipedes* REITTER, 1963, Turkey, habitus; (6) *Cryptophagus dilatipennis* REITTER, 1888 Georgia.

E t y m o l o g y : Named after the Peloponnese peninsula in Greece.

D e s c r i p t i o n : Male, 2.0 mm, reddish-brown, membranous wings absent, legs and antennae slender. Shiny, surface with puncture strong and moderately dense on pronotum, finer and sparser on elytra (basal third). Covered with uniform pale pubescence, hairs decumbent but coarse, somewhat erected on margin and apex of elytra. Pronotum with a few long hairs projecting the side margin distinctly.

Head without any features and eyes medium-sized with just a few ommatidia. Punctures on head strong and denser as on pronotum.

Pronotum with prominent anterior callosities, moderately short (long as the distance between them and median tooth), surface of callosities poorly visible from above. Median tooth located in the middle of the side margin. Side margin straight behind the tooth, narrowed distally, with a few small teeth. Surface convex, puncture strong, distance between smaller than the diameter. Pronotum moderately transverse (1.4 x broader than long).

Elytra elongated, slightly rounded, side margin partly nearly straight, humeral callus indistinct.

Antennae moderately slender, 11-segmented including a 3-segmented club. Segment 1 nearly round, broader than 2, 2 and 3 pear-shaped, 3 somewhat smaller. Segments 4 to 8

more (4, 5, 6, 7) or less (8) longer than broad. Segment 9 and 10 transverse, 11 long as broad and strong asymmetrical. Tarsal formula 5-5-4 (females with 5-5-5). Parameres shown in fig. 2.

C o m m e n t : Similar to *Cryptophagus axillaris* REITTER, 1875 (fig. 3), *C. brisouti* REITTER, 1875 (fig. 4), *C. bipedes* BRUCE, 1963 (fig. 5), *C. dilatipennis* REITTER, 1888 (fig. 6) and *C. reflexicollis* REITTER, 1877.

D i s t r i b u t i o n : Currently known only from Greece, Peloponnese peninsula. The specimens were found around Mt. Chelmos, Mt. Erymanthos and Kyllini Oros. The most similar species (see above) were restricted on the Carpathian Mountains (*C. axillaris* RTT.), Caucasus (*C. dilatipennis* RTT.), Pyrenean Mountains (*C. brisouti* RTT.) and Northwest of Turkey (*C. bipedes* BR.). *C. reflexicollis* RTT. is distributed in parts of the Carpathian Mountains and Balkans.

Acknowledgement

I'm grateful to Volker Brachat (Geretsried), Matthias Hartmann (Erfurt), Heinrich Meybohm (Stelle) and Jürgen Schmidl (Nuremberg) for loaning or donating specimens.

Zusammenfassung

Eine neue Art der Gattung *Cryptophagus* HERBST, 1792 von der Peloponnes in Griechenland wird beschrieben.

Author's address: Jens ESSER
Fagottstraße 6
D-13127 Berlin, Germany
E-mail: jens_esser@yahoo.de

ZOBODAT - www.zobodat.at

Zoologisch-Botanische Datenbank/Zoological-Botanical Database

Digitale Literatur/Digital Literature

Zeitschrift/Journal: [Linzer biologische Beiträge](#)

Jahr/Year: 2021

Band/Volume: [0052_2](#)

Autor(en)/Author(s): Esser Jens

Artikel/Article: [Cryptophagus peloponnesicus nov.sp. \(Cryptophagidae\) from Peloponnese, Greece 963-966](#)