

Linzer biol. Beitr.	53/1	45-47	August 2021
---------------------	------	-------	-------------

## ***Cryptophagus incomptus* nov.sp. from Taiwan (Coleoptera, Cryptophagidae)**

Jens ESSER

**A b s t r a c t :** A new species of *Cryptophagus* HERBST, 1792 (Cryptophagidae) from Taiwan is described.

**K e y w o r d s :** Cryptophagidae, *Cryptophagus*, new species, Taiwan, Palaearctic region, distribution data.

### **Introduction**

Not much is known about *Cryptophagus* HERBST, 1792 from Taiwan. JOHNSON et al. (2007) mentioned *Cryptophagus decoratus* REITTER, 1874 and *C. latangulus* REITTER, 1889 from the island. Both species are widespread in the East Palaearctic and originally described from Japan. Further Cryptophagidae which were recorded are *Caenoscelis wangi* JOHNSON & BOWESTEAD, 2003, *Himascelis formosanus* ESSER, 2019, *Henoticus sinensis* BRUCE, 1943, *Atomaria lewisi* REITTER, 1877, *A. obliqua* JOHNSON, 1971, *A. pudica* JOHNSON, 1971, and *A. torrida* JOHNSON, 1971 (ESSER 2019, JOHNSON et al. 2007). *Caenoscelis wangi* and *Himascelis formosanus* are endemic species with fully reduced membranous wings. *Henoticus sinensis* and the *Atomaria* species are also widespread in wider parts of South Asia, *A. lewisi* is a nearly cosmopolitan species. Among specimens donated to the author one species didn't fit with known species of *Cryptophagus* and is described below.

### **Material and methods**

The material examined is deposited in the following collections:

FSCA .....Florida State Collection of Arthropods, Gainesville, FL, USA

cEs .....author's private collection

The morphological studies were conducted using a Euromex DZ 1605 and Euromex BB.1153.PLI. Photographs were created with a ToupCam 16MP (ToupTek).

Body length was measured from the head to the apex of the elytra, length of pronotum in the middle, broadness on the broadest part.

## Results

### *Cryptophagus incomptus* nov.sp. (figs 1-4)

**Type material:** Holotype ♂: "Taiwan, Nantou, Ren'ai, 1950 m, deciduous forest, litter sifted, 24°01'19"N, 121°11'45"E, 27.VII.2018, Hetzel leg." [cES].

**E t y m o l o g y :** Incomptus – Latin for “simple”.

**D e s c r i p t i o n :** Male, monochrome reddish-brown, 2.3 mm, membranous wings fully developed, covered with pale and decumbent pubescence (on sides of elytra hairs partially more erected). Elytra with longer hairs forming indistinct rows but not more erected than the remaining.

Head with eyes large and hemispherical, punctuation strong, interspaces smaller than the diameter.

Pronotum convex, transverse (1.3x broader than long) with anterior callosities merging without distinct ledge into lateral margin. Middle tooth on side of pronotum small and indistinct, located in the middle between anterior and posterior angle. Lateral margin smooth before and indistinct serrated behind the middle tooth. Anterior angles rounded, not prominent; anterior margin moderately convex. Posterior margin moderately convex in middle two quarters, straight between posterior angles and foveae. Punctuation strong, interspaces somewhat smaller than the diameters.

Elytra moderately convex, elongated, nearly parallel in anterior two thirds. Punctuation (basal third) moderate, finer than on head and pronotum, more sparse (interspaces larger than diameters). Suture indistinct in the basal third.

Legs more stout, tarsal formula 5-5-4 in male (female unknown, without doubt 5-5-5). Anterior tarsomeres 1 to 4 widened (only in male), tarsomeres 1 to 4 of metatarsus more indistinct widened.

Antennae 11-segmented including a 3-segmented club. Segment 1 short and thick, nearly barrel-shaped, segment 2 smaller, elongated. Segments 3 to 8 of decreasing length, more (8) or less (3) pear-shaped. 9 and 10 moderately convex, 11 long as broad, asymmetric.

Parameres (fig. 4) elongated triangular.

**C o m m e n t :** The new species resembles *Cryptophagus pallidus* STURM, 1845 (West Palaearctic) due to the anterior callosities. The species differs by a convex pronotum less flattened laterally and shorter parameres. The nearctic *C. croceus* ZIMMERMANN, 1869 resembles by general shape of pronotum but with larger callosities, more distinct middle tooth located before the middle and shorter parameres.

## Distributional note

### *Cryptophagus scanicus* (LINNÉ, 1758)

**M a t e r i a l e x a m i n e d :** Taiwan: 1♀ "Taiwan: Nantau [Nantou] County, Mei feng, 3-V-1983, Henry K. Townes; Insect flight trap" [FSCA].

### Acknowledgement

I wish to thank Volker Assing (Hannover) for donating several Cryptophagidae to me, Andreas Hetzel (Hildesheim) for collecting Cryptophagidae on various occasions, Paul S. Skelley (FSCA) for loaning specimens.

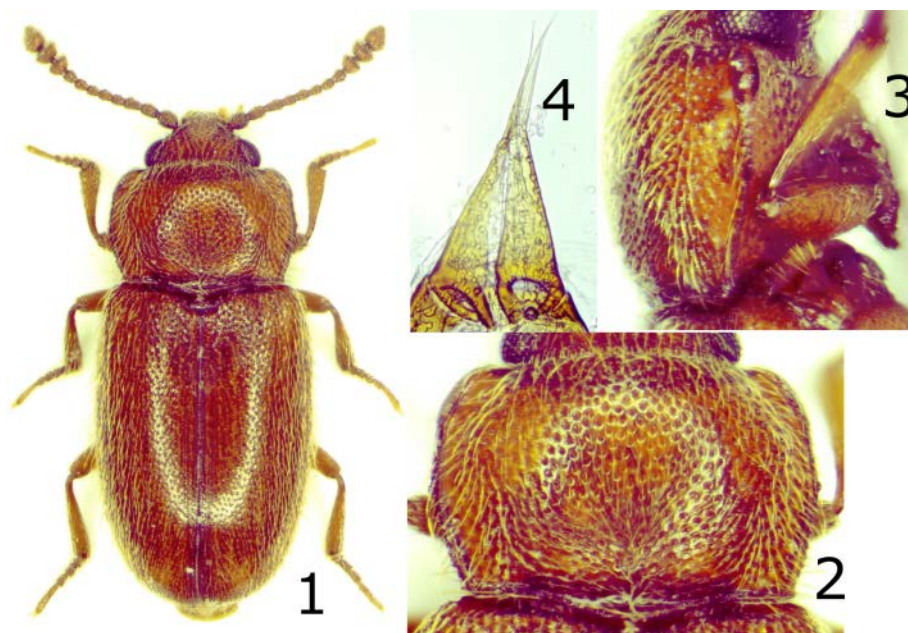
### Zusammenfassung

Eine neue Art der Gattung *Cryptophagus* HERBST, 1792 aus Taiwan wird beschrieben.

### References

- ESSER J. (2019): On *Himascelis* SEN GUPTA, 1978 (Insecta: Coleoptera: Cryptophagidae) from South Asia. — *Vernate* **38**: 189-196.
- JOHNSON C., OTERO J.C. & R.A.B. LESCHEN (2007): Cryptophagidae. In: LÖBL I. & A. SMETANA: Catalogue of Palearctic Coleoptera Vol. **4**. — Apollo Books, Stentrup: 513-531.

Author's address: Jens ESSER  
Fagottstraße 6  
D-13127 Berlin, Germany  
E-mail: jens\_esser@yahoo.de



**Figs 1-4:** Holotype of *Cryptophagus incomptus* nov.sp. (1) habitus (dorsal view); (2) pronotum (dorsal view); (3) pronotum (lateral view) and (4) parameres.



# ZOBODAT - [www.zobodat.at](http://www.zobodat.at)

Zoologisch-Botanische Datenbank/Zoological-Botanical Database

Digitale Literatur/Digital Literature

Zeitschrift/Journal: [Linzer biologische Beiträge](#)

Jahr/Year: 2021

Band/Volume: [0053\\_1](#)

Autor(en)/Author(s): Esser Jens

Artikel/Article: [Cryptophagus incomptus nov.sp. from Taiwan \(Coleoptera, Cryptophagidae\) 45-47](#)