

Linzer biol. Beitr.	53/1	55-59	August 2021
---------------------	------	-------	-------------

# ***Cryptophagus kielhorni* nov.sp. from Ethiopia with remarks on taxonomy and distribution of further species of *Cryptophagus* HERBST, 1792 in Africa (Coleoptera, Cryptophagidae)**

Jens ESSER

**A b s t r a c t :** A new native species of *Cryptophagus* HERBST, 1792 from Ethiopia is described. Additional distribution data of further species in Africa are presented.

**K e y w o r d s :** Cryptophagidae, *Cryptophagus*, Afrotropical Region, Ethiopia, new species, distribution data.

## **Introduction**

Among several Cryptophagidae from the Naturkundemuseum Erfurt (Germany) and the Royal Museum for Central Africa, Tervuren (Belgium) two species of *Cryptophagus* HERBST, 1792 were found. One of them fits to *Cryptophagus wachteli* ESSER, 2013 from the Bale Mountains. The second, collected from Mt. Choke, is not yet described.

OTERO & PEREIRA (2019) presented a paper dealing with distribution data of *Cryptophagus* from several countries across the Afrotropical zoogeographic region. The present paper provides additional data and critical comments to some recently published data.

## **Material and methods**

The material examined is deposited in the following collections:

NME .....Naturkundemuseum Erfurt, Germany

RMCA .....Royal Museum for Central Africa, Tervuren, Belgium

cES.....author's private collection, Berlin, Germany

The morphological studies were conducted using a Euromex DZ 1605 and Euromex BB.1153.PLI. Photographs were created with a ToupCam 16MP (ToupTek).

Body length was measured from the head to the apex of the elytra, length of pronotum in the middle, broadness on the broadest part.

## Description of new species

### *Cryptophagus kielhorni* nov.sp. (figs 1, 3)

**Type material:** Holotypus ♂: "Ethiopia, Amhara, W-slope Mt. Choke, 10°42'17"N, 37°50'29"E, 3700-3900 m, 25.II.2019, leg. D. Hauth, J. Schmidt, M. Yeshitla, Yitbarek WW" [MNE]. Paratypes: 1♂ with the same data as the holotype [cES]; 1♂, 1♀ "Ethiopia, Amhara, Mt. Choke crater valley, 10°41'14"N, 37°50'07"E, 24.II.2019, 3700-3800 m, leg. D. Hauth, J. Schmidt, M. Yeshitla, Yitbarek" [NME]; 2♂♂ "Gojjan Prov.: Mt. Choke, 3200/3500 m, 15/18.XII.1972 / Coll. Mus. Trevuren, Ethiopie, R.O.S. Clarke" [RMCA, cES].

**E t y m o l o g y :** Named in honour of my friend Karl-Hinrich Kielhorn for many years of amusing field trips and discussing many interesting phenomenons in entomology.

**D e s c r i p t i o n :** Male, 1.9 mm, reddish-brown, membranous wings absent, legs and antennae slender. Shiny, with punctuation moderately strong and sparse on pronotum, sparser on elytra (basal third). Covered with uniform pale pubescence, hairs decumbent and sparse. Pronotum with a few long hairs projecting the side margin partly.

Head without any features, eyes medium-sized with just a few ommatidia. Punctuation as on pronotum, somewhat denser and finer.

Pronotum with prominent anterior callosities, short, forming a hook. Distance between anterior callosity and median (lateral) teeth 1.5x longer as callosity. Surface of callosities not visible from above. Median tooth small and indistinct, located in the middle of the side margin. Side margin poorly rounded behind the tooth, narrowed distally, with a few small teeth. Side margin nearly straight and smooth between median teeth. Surface convex, punctuation moderately strong, distance between wider than the diameter. Pronotum poorly transverse (1.25 x broader than long), broadest in the middle.

Elytra elongated; slightly rounded, humeral callus indistinct. Pubescence short, sparse, and decumbent.

Antennae moderately slender, 11-segmented including a 3-segmented club. Segment 1 nearly round, broader than 2, segment 2 somewhat smaller and elongated, segment 3 longer: 1.5x as long as broad. Segments 4 to 8 more (4) or less (5, 6, 7, 8) longer than broad. Segment 9 and 10 transverse, 11 as long as broad and strong asymmetrical. Tarsal formula 5-5-4 (females with 5-5-5). Parameres shown in fig. 3.

**C o m m e n t :** Similar to *Cryptophagus wachteli* ESSER, 2013 (fig. 2) but easily distinguishable by its less transverse pronotum, further by short and decumbent pubescence on elytra. Parameres elongated (fig. 4).

**D i s t r i b u t i o n :** Currently known only from Mt. Choke, Amhara province of Ethiopia.

## Remarks on taxonomy

### *Cryptophagus scotti* BRUCE, 1952

Originally described from Mt. Cameroon in Cameroon and redescribed by OTERO & PEREIRA (2019) must be transferred to *Micrambe* THOMSON, 1863. The species is remarkably similar to *Micrambe camerunensis* OTERO & PEREIRA, 2018 described recently also from Mt. Cameroon. Parts of the type series were collected at the same locality as the type series of *M. scotti* (BRUCE, 1952).

Therefore, the following changes were made:

*Micrambe scotti* (BRUCE, 1952) **comb. nov.** (*Cryptophagus*).

### Additional faunistic data from Ethiopia

#### *Cryptophagus cellaris* (SCOPOLI, 1763) (fig. 6)

Ethiopia: Oromia, Mt. Kaka above Meraro, 3300-3420 m, 28.XI.2017 [MNE].

#### *Cryptophagus wachteli* ESSER, 2013 (fig. 2)

Ethiopia: Bale Mts., Harennä Forest E Rira, 3150 m, 10./11.II.2017 [NME, cES]. OTERO & PEREIRA (2019) mentioned the Western Palaerctic species *C. distinguendus* STURM, 1845 from Harennä Forest and further places in high altitudes of the Bale Mts. For the author, it is very probable that OTERO & PEREIRA (2019) confused *C. distinguendus* with *C. wachteli*. Both are quite similar (fig. 2, 5). *C. distinguendus* inhabits hollow trees or dens of different mammals outside trees.

Further distribution data for records of *Cryptophagus* in the Afrotropical Region were provided by OTERO & PEREIRA (2019).

### Acknowledgement

I'm grateful to Matthias Hartmann (NME, Erfurt) and Stéphane Hanot (RMCA, Tervuren) for loaning or donating specimens and the collectors for their great work.

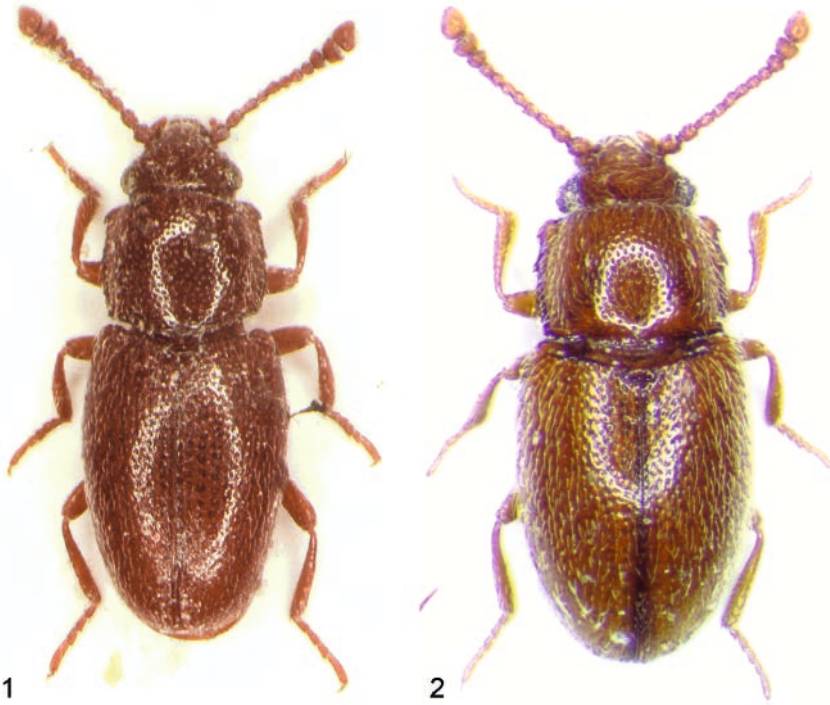
### Zusammenfassung

Eine neue Art der Gattung *Cryptophagus* HERBST, 1792 aus Äthiopien wird beschrieben. Weiterhin werden Verbreitungsdaten der Gattung aus Afrika mitgeteilt und einige Literaturangaben kritisch betrachtet.

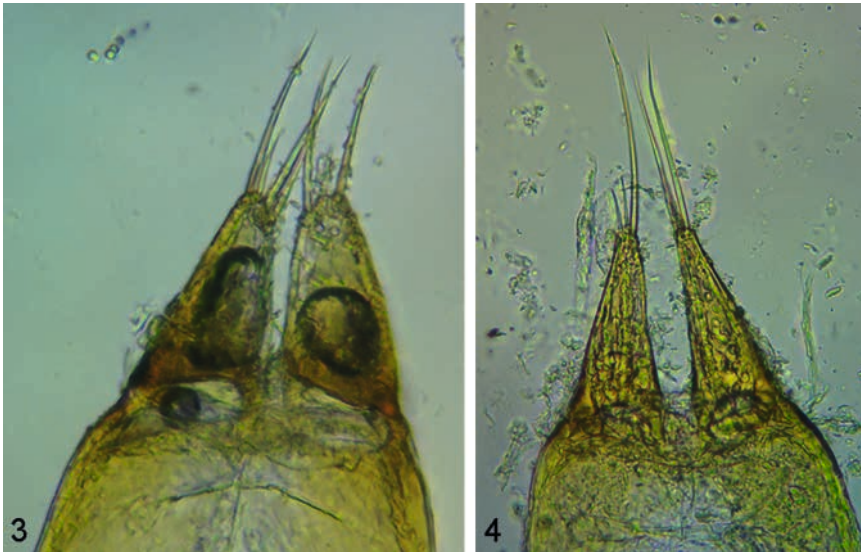
### References

- ESSER J. (2013): Eine neue *Cryptophagus*-Art aus Äthiopien (Coleoptera, Cryptophagidae). — Mitteilungen des Internationalen Entomologischen Vereins **38**/3-4: 167-169.
- OTERO J.C. & J.M. PEREIRA (2019): On a new species of *Micrambe* from Africa (Coleoptera, Cryptophagidae). — ZooKeys **748**: 47-56.
- OTERO J.C. & J.M. PEREIRA (2019): Las especies del género *Cryptophagus* HERBST, 1792 (Coleoptera, Cryptophagidae) de la región afrotropical. — Boletín – Asociación Española de Entomología **43**/3-4: 173-182.

Author's address: Jens ESSER  
Fagottstraße 6  
D-13127 Berlin, Germany  
E-mail: jens\_esser@yahoo.de



**Figs 1-2:** Habitus of *Cryptophagus* sp. (1) *C. kielhorni* nov.sp., holotype; (2) *C. wachteli* ESSER, 2013, holotype.



**Figs 3-4:** Parameres of *Cryptophagus* sp. (3) *C. kielhorni* nov.sp., holotype; (4) *C. wachteli* ESSER, 2013, holotype.



**Figs 5-6:** Habitus of *Cryptophagus* sp. (5) *C. distinguendus* STURM, 1845, Germany; (6) *C. cellaris* (SCOPOLI, 1763), holotype.



# ZOBODAT - [www.zobodat.at](http://www.zobodat.at)

Zoologisch-Botanische Datenbank/Zoological-Botanical Database

Digitale Literatur/Digital Literature

Zeitschrift/Journal: [Linzer biologische Beiträge](#)

Jahr/Year: 2021

Band/Volume: [0053\\_1](#)

Autor(en)/Author(s): Esser Jens

Artikel/Article: [Cryptophagus kielhorni nov.sp. from Ethiopia with remarks on taxonomy and distribution of further species of Cryptophagus HERBST, 1792 in Africa \(Coleoptera, Cryptophagidae\) 55-59](#)