

Linzer biol. Beitr.	53/1	123-169	August 2021
---------------------	------	---------	-------------

New South American checkered beetles of the genus *Enoclerus* (Coleoptera, Cleridae, Clerinae)

Weston OPITZ

Abstract: Sixty-four new species are described. They are: *Enoclerus aspera* nov.sp., *E. bahia* nov.sp., *E. bolivar* nov.sp., *E. campbelli* nov.sp., *E. capillus* nov.sp., *E. caraca* nov.sp., *E. cauca* nov.sp., *E. ceara* nov.sp., *E. cedro* nov.sp., *E. chagra* nov.sp., *E. cinctus* nov.sp., *E. colorados* nov.sp., *E. corcovado* nov.sp., *E. cosnipata* nov.sp., *E. condinamarca* nov.sp., *E. cura* nov.sp., *E. cusco* nov.sp., *E. farragoinis* nov.sp., *E. fascia* nov.sp., *E. fauna* nov.sp., *E. fractus* nov.sp., *E. gibboclerus* nov.sp., *E. gorgona* nov.sp., *E. grenade* nov.sp., *E. guiana* nov.sp., *E. huallaga* nov.sp., *E. huila* nov.sp., *E. itajura* nov.sp., *E. junin* nov.sp., *E. kaw* nov.sp., *E. larioja* nov.sp., *E. loreto* nov.sp., *E. losvolvanes* nov.sp., *E. luridus* nov.sp., *E. maldonado* nov.sp., *E. mata* nov.sp., *E. matamata* nov.sp., *E. meta* nov.sp., *E. monteverde* nov.sp., *E. morrisi* nov.sp., *E. napo* nov.sp., *E. nova* nov.sp., *E. ordinis* nov.sp., *E. para* nov.sp., *E. paula* nov.sp., *E. pedraazul* nov.sp., *E. pictilis* nov.sp., *E. pictus* nov.sp., *E. octavus* nov.sp., *E. rio* nov.sp., *E. riocuare* nov.sp., *E. rionegro* nov.sp., *E. rondonia* nov.sp., *E. rubidus* nov.sp., *E. rubra* nov.sp., *E. sinop* nov.sp., *E. teutonia* nov.sp., *E. tucuman* nov.sp., *E. velha* nov.sp., *E. vera* nov.sp., *E. vista* nov.sp., *E. wappesi* nov.sp., *E. yasuni* nov.sp. and *E. yungas* nov.sp.

Keywords: Taxonomy, new species, checkered beetles.

Introduction

Enoclerus GAHAN 1910 is a large and broadly distributed New World clerid genus. The North American (north of Mexico) fauna is well characterized (BARR & RIFKIND, 2009). More recent taxonomic work on the genus has focused on descriptions of species from Mexico and Central America [(BARR, 1976; EKIS, 1976; BARR, 1978; RIFKIND, 1994, 1996a, 1996b, 2002 and 2012); BARR & RIFKIND, 2009]. The genus is particularly diverse in South America. Until 1960, many authors worked extensively with the clerid fauna (including *Enoclerus*) of South America (BURKE & CHABOO, 2015). More recent work with *Enoclerus*, especially from South America has been limited.

Accumulation of *Enoclerus* specimens by the author including loans obtained from various institutions (see List of Repositories above), has generated a considerable number of *Enoclerus* species heretofore undescribed. In order to make names for these species available for inclusion in a Western Hemisphere catalogue of the Cleridae (Opitz, in preparation), descriptions are provided.

Material & methods

Although morphological criteria are used to determine species status, I adhere to the biological species concepts as discussed by STANDFUSS (1896), DOBZHANSKY (1937), and MAYR (1963). The operational criteria for the delimitation of species involve morphological structure and any other available criteria that suggest reproductive isolation among members of metapopulation lineages (DE QUEIROZ 2007). Experience with morphological structure is generally a reasonable criterion with which to hypothesize reproductive isolation. In this study, consideration for species status involves: integumental color, color and arrangement of setal patterns on the pronotum and the elytra, length of the antenna, prominence of the elytral tubercle, length of the legs, and characteristics of the aedeagus.

Methods involving dissection, measurements involving eye width/frons width, pronotal width, and elytral length, and morphological terminology follow those described in OPITZ (2010: 35). BROWN (1956) and BORROR (1960) were used to coin scientific names. Abbreviations used in this manuscript are defined as follows: EW/FW = eye width/frons width (measured at 500 x from the front of the head); PW/PL= pronotal width (across the widest portion of the pronotal disc/pronotal length (from midline anterior margin to midline posterior margin); EL/EW= elytral length (from humeral angle to apex)/elytral width (greatest dorsal width of one elytron).

Habitus photographs were taken with a Leica Z 16 APO microscope equipped with JVC KY-F75U-CCD camera and controlled by Syncroscopy Auto Montage software (Cambridge, United Kingdom). Image stacks, involving the aedeagus, were taken with a Leica® DM2500 compound scope with a 10X objective lens and a Leica® DFC425 camera (Meyer Instruments, Houston, Texas, United States of America), and combined using Zerene Stacker®.

Repository of specimens

I used codens as noted in ARNETT JR. et al. (1993) to indicate repositories of specimens, with some modifications to accommodate institutional name changes.

ACMT.....American Coleoptera Museum, 8734 Paisano Pass, San Antonio, Texas 78255, United States of America (James E. Wappes; wappes@earthlink.net).

AMNH.....American Museum of Natural History, Department of Entomology, Central Park West at 79th Street, New York, New York 10024-5192, United States of America (Lee Herman; herman@amnh.org).

- BYUC.....Brigham Young University, Monte L. Bean Life Science Museum, Insect Collections, 645 East 1430 North, Provo, Utah 84602, United States of America (Shawn M. Clark: shawn_clark@byu.edu).
- CNCI.....Agriculture-Food Canada, K.W. Neatby Building, 960 Carling Avenue, Ottawa, K1A 0C6, Canada (Serge Laplante: serge.laplante@agr.gc.ca)
- FSCAFlorida State Collection of Arthropods, Division of Plant Industry/Entomology, Doyle Connor Building, 1911 SW 34th Street, Florida Department of Agriculture, Gainesville, Florida 32608-7100. United States of America (Paul E. Skelley; Paul.Skelley@fdacs.gov).
- JMLC.....John M. Leavengood, Jr. Collection, USDA-APHIS-PPQ, 9325 Bay Plaza Boulevard, Suite 206, Tampa, Florida 33619, United States of America (john.m.leavengood@aphis.esda.gov).
- JNRC.....Jacques Rifkind Collection, 5105 Morella Avenue, Valley Village, California 91607-3219, United States of America (clerid@aol.com).
- MCNZ.....Museu de Ciências Naturais, Fundação Zoobotânica do Rio Grande do Sul, Rua Dr. Salvador França, 1427, 90690-000 Porto Alegre, Rio Grande do Sul, Brasil (Luciano de Azevedo Moura; iucetima@hotmail.com).
- MNHNMuseum d'Histoire Naturelle, Entomologie, 45 bis, Rue de Buffon, Paris (Ve), France (Antoine Mantilleri; amantill@mnhn.fr)
- MZSP.....Museu de Zoologia da Universidade de São Paulo, São Paulo, Brazil (Sônia Casari; casari@usp.br).
- RFMCRoy F. Morris II Collection, 2635 Ewell Road, Lakeland, Florida 33811, United States of America (beetlesandbirds@gmail.com).
- RGCM.....Roland Gerstmeier Collection, St.-Cajetan-Strasse 38, 81669, München, Germany (r.gerstmei@tum.de).
- RHTC.....Robert H. Turnbow, Jr. Collection, 59 Brokenview Court, Enterprise, Alabama 36330, United States of America (grumpyndour@gmail.comfda).
- SEMC.....The University of Kansas, Snow Entomological Division, The Natural History Museum of the University of Kansas, Lawrence, Kansas 66045-2454, United States of America (Zachary Falin; ksem@ku.edu).
- TAMU.....Texas A & M University, College of Agriculture and Life Sciences, Department of Entomology, Minnie Belle Heep Building, College Station, Texas 77843-7029, United States of America (Andrew J. Graf; cipher_the_noble@tamu.edu).
- UCDCUniversity of California- Davis, Department of Entomology, R. M. Bohart Museum of Entomology, 1 Shields Avenue, Davis, California 95616-85849, United States of America (Steve L. Heydon; slheydon@ucdavis.edu).
- USNM.....United States National Museum, National Museum of Natural History MRC 168, Washington, D.C. 20560-0165, United States of America (Floyd Shockley; ShockleyF@si.edu).
- UTBC.....University of Texas Biodiversity Collections, University of Texas Insect Collection, Lake Austin Center, 3001 Lake Austin Boulevard, Suite 1.314, Austin, Texas 78703, United States of America (Alexander L. Wild; alex.wild@utexas.edu).

- WFBM William F. Barr Museum, University of Idaho, Department of Plant, Soil, and Entomological Sciences, 606 Rayburn Street, Moscow, Idaho 83844-2339, United States of America (Luc Leblanc; leblanc@uidaho.edu).
- WOPC Weston Opitz Collection, Research Associate, Florida State Collection of Arthropods, Division of Plant Industry/Entomology, Florida Department of Agriculture and Consumer services, 1911 SW 34th Street, Gainesville, Florida 32608-7100, United States of America (Weston.Opitz@fdacs.gov).

Taxonomy

Enoclerus aspera OPITZ nov.sp. (Figs 1, 65)

Type material: Holotype: ♂. Type locality: Colombia, Cundinamarca, Usaquén, Alt. 3,000 m, Colector, Jilia Orrepo, Fecha, 11-IX-1939 (WOPC). Paratype: 1 specimen. COLOMBIA: Bogotá (MNHN, 1).

Diagnosis: Black, except elytron with pair of yellow fascia, elytra roughly sculptured.

Description: Size: Length 6.6 mm; width 1.2 mm. Form: As in Fig. 1. Head: (EW/FW 20/60). Thorax: Elytral disc roughly sculptured; (PL/PW 180/180); (EL/EW 320/90). Abdomen: Aedeagus (Fig. 65).

Etymology: The species name, *aspera*, is a Latin adjective with a meaning of "rough".

Enoclerus bahia OPITZ nov.sp. (Fig. 2)

Type material: Holotype: ♀. Type locality: Brazil, Estado do Bahia, Encruzilhada, ?-XI-1972, M. Alvarenga (WOPC).

Diagnosis: Cranium black, vested with white setae; pronotum mostly black, vested with black setae, pronotal collar testaceous; elytra with basal tubercle and white lunulate fascia, elytral basal 1/3 and elytral apex testaceous, each elytron with circular black macula, elytral apex with patch of white setae; pterothorax and legs testaceous; abdomen black.

Description: Size: Length 8.0 mm; width 1.2 mm. Form: As in Fig. 2. Head: Capitulum slightly obtuse; (EW/FW 20/100). Thorax: Elytral disc partially roughly punctate; (PL/PW 180/180); (EL/EW 350/80). Abdomen: Female pygidium scutiform.

Etymology: The species name, *bahia*, constitutes a noun in apposition and refers to the type locality.

Enoclerus bolivar OPITZ nov.sp. (Figs 3, 66)

Type material: Holotype: ♂. Type locality: Peru, Prov. de Bolivar, Balzapamba, M de Mathan, III-IV-1894 (MNHN). Paratypes: 2 specimens. PERU: Bolivar; Balzapamba, III-IV-1894, M. de Mathan (MNHN, 1; WOPC, 1).

D i a g n o s i s : Cranium, antenna, legs black; pronotal arch black; pronotal proper red; elytra basal 1/3 red, middle 1/3 with yellow macula, posterior 1/3 black but with yellow macula.

D e s c r i p t i o n : Size: Length 8.0 mm; width 2.5 mm. Form: As in Fig. 3. Head: Capitulum slightly acuminate; (EW/FW 28/80). Thorax: Elytral disc partially roughly punctate; (PL/PW 130/130); (EL/EW 350/95). Abdomen: Aedeagus (Fig. 66).

E t y m o l o g y : The species name, *bolivar*, constitutes a noun in apposition and refers to the type locality.

***Enoclerus campbelli* OPITZ nov.sp.** (Fig. 4)

T y p e m a t e r i a l : Holotype: ♀. Type locality: Brazil, Distrito Federal, Parque Nacional, 11-III-1970, J. M. & B. A. Campbell (CNCI).

D i a g n o s i s : Legs and antenna testaceous; body mostly black, highly setose; each elytron with 2 yellow fascia.

D e s c r i p t i o n : Size: Length 6.0 mm; width 1.0 mm. Form: As in Fig. 4.

Head: Capitulum quadrate; (EW/FW 20/50). Thorax: Elytral disc slightly coarsely punctate; (PL/PW 100/100); (EL/EW 240/80). Abdomen: Female pygidium scutiform.

E t y m o l o g y : The species name, *campbelli*, honors J. Milton Campbell for his many contributions to Systematic Entomology.

***Enoclerus capillus* OPITZ nov.sp.** (Fig. 5)

T y p e m a t e r i a l : Holotype: ♀. Type locality: Brazil, São Paulo; Cantareira, 26.XII-1943, J. Halik, 6357 (AMNH).

D i a g n o s i s : Black; elytra with white setose fascia.

D e s c r i p t i o n : Size: Length 7.5 mm; width 1.1 mm. Form: As in Fig. 5. Head: Capitulum acuminate; (EW/FW 20/60). Thorax: Pronotal and elytral discs finely punctate; (PL/PW 120/120); (EL/EW 365/80). Abdomen: Female pygidium scutiform.

E t y m o l o g y : The species name, *capillus*, is a Latin name that stems from "hair".

***Enoclerus caraca* OPITZ nov.sp.** (Fig. 6)

T y p e m a t e r i a l : Holotype: ♀. Type locality: Brazil, Caraça, P. Germain, 2nd Semestre, 1884 (MNHN).

D i a g n o s i s : Body and legs black; elytra mostly testaceous, each elytron with rectangular fascia.

D e s c r i p t i o n : Size: Length 8.0 mm; width 1.3 mm. Form: As in Fig. 6. Head: Capitulum slightly obtuse; (EW/FW 30/75). Thorax: Elytral disc partially roughly punctate; (PL/PW 150/150); (EL/EW 340/85). Abdomen: Female pygidium scutiform.

E t y m o l o g y : The species name, *caraca*, constitutes a noun in apposition and refers to the type locality.

***Enoclerus cauca* OPITZ nov.sp.** (Figs 7, 67)

Type material: Holotype: ♂. Type locality: Colombia, Cauca, PNN Gorgona, EL Helechal, 30 m, Malaise, 15-VII-9-VIII-2001, H. Torres (WOPC). Paratypes: 21 specimens. COLOMBIA: Departamento del Cauca; Valle de Cauca, PNN Gorgona, EL Helechal, 30 m, Malaise, 15-VII-9-VIII-2001, H. Torres (WOPC, 1); Cauca, Valle de Cauca, Isla Gorgona, 30 m, Malaise, 22-III-13-IV-2001, R. Duque (WOPC, 1); Cauca, Valle de Cauca, PNN Isla Gorgona, El Saman, Malaise, 12-27-VI-2001, H. Torres (WOPC, 3); Cauca, Valle de Cauca, PNN Isla Gorgona, El Saman, Malaise, 7-20-II-2001, H. Torres (WOPC, 2); Cauca, Valle de Cauca, Isla Gorgona, EL Helechal, 30 m, Malaise, 7-20-II-2001, H. Torres (WOPC, 5); Cauca, Valle de Cauca, Isla Gorgona, 30 m, Malaise, 22-III-13-IV-2001, R. Duque (WOPC, 5); Cauca, Valle de Cauca, PNN Gorgona, Antigua Laguna, 70 m, Malaise, 10-26-VI-2000, H. Torres (WOPC, 1); Cauca, Valle de Cauca, PNN Gorgona, EL Helechal, 30 m, Malaise, 6-22-XI-2001, H. Torres (WOPC, 1); Cauca, Valle de Cauca, PNN Gorgona, EL Helechal, 30 m, Malaise, 22-XI-11-XII-2001, H. Torres (WOPC, 1); Departamento de Magdalena; PNN Tayrona Zaino, 50 m, Malaise, 28-VI-17-VII-2001, R. Enriquez (WOPC, 1); Departamento de Meta; PNN Tinigua Cano, Navara, Malaise, 20-23-XII-2001, D. Campus (WOPC, 1).

Diagnosis: Integument mostly shiny black; elytron with three maculae.

Description: Size: Length 7.5 mm; width 1.1 mm. Form: As in Fig. 7. Head: Antenna longer than width across eyes, capitulum slightly compacted, apex acuminate; (EW/FW 22/60). Thorax: Subapical depression well defined; pronotal and elytral discs finely punctate; (PL/PW 120/120); (EL/EW 280/70). Abdomen: Aedeagus (Fig. 67).

Variation: Length 5.0-7-0 mm; width 1.0-1.1 mm.

Etymology: The species name, *cauca*, constitutes a noun in apposition and refers to the type locality.

***Enoclerus ceara* OPITZ nov.sp.** (Figs 8, 68)

Type material: Holotype: ♂. Type locality: Brazil, Ceará, Serra de Baturité, Gounelle, ?-I-1885 (MNHN). Paratypes: 2 specimens. BRAZIL: Estado do Ceará; Serra de Baturité, Gounelle, ?-I-1885 (MNHN, 1; WOPC, 1).

Diagnosis: Mostly black; each elytron with 4 yellow markings, posterior pair of markings curvate.

Description: Size: Length 5.0 mm; width 1.0 mm. Form: As in Fig. 8. Head: Capitulum acuminate; (EW/FW 20/43). Thorax: Elytral disc minutely punctate; (PL/PW 80/80); (EL/EW 230/66). Abdomen: Aedeagus (Fig. 68).

Etymology: The species name, *ceara*, constitutes a noun in apposition and refers to the type locality.

***Enoclerus cedro* OPITZ nov.sp.** (Figs 9, 69)

Type material: Holotype: ♂. Type locality: Bolivia, Dpto. La Paz, Prov. Nor Yungas, Rio Cedro Mayo, nr. Cedro Mayo, 16.231°S, 67.749°W, 30-IV-2005, S. M. Clark (WOPC). Paratype: 1 specimen. PERU: Provincia de Huallaga; Chambireyacú, près Yurimaguas (Huallaga -Peru), M. de Mathan, Juin-Août 1885 (MNHN, 1).

Diagnosis: Elytra mostly black, each elytron with three linear fasciae.

Description: Size: Length 5.0 mm; width 1.0 mm. Form: As in Fig. 9. Head: (EW/FW 20/50). Thorax: Pronotal and elytral discs finely punctate; (PL/PW 90/90); (EL/EW 190/60). Abdomen: Aedeagus (Fig. 69).

E t y m o l o g y : The species name, *cedro*, constitutes a noun in apposition and refers to the type locality.

***Enoclerus chagra* OPITZ nov.sp.** (Figs 10, 70)

T y p e m a t e r i a l : Holotype: ♂. Type locality: Colombia, Putumayo, PNN La Playa Cabaña, Chagra, 320 m Elevation, 0° 07' S 74°56'W, M 2572, 15-30-IX-2001, R. Cobete (WOPC).

D i a g n o s i s : Cranium and pronotum black, except pronotal collar flavotestaceous; elytron mostly flavotestaceous, with transverse black macula.

D e s c r i p t i o n : Size: Length 8.0 mm; width 1.8 mm. Form: As in Fig. 10. Head: Antenna slightly longer than width across eyes; capitulum slightly acuminate; (EW/FW 30/80). Thorax: Pronotal and elytral discs finely punctate: (PL/PW 130/130); (EL/EW 320/100). Abdomen: Aedeagus (Fig. 70).

E t y m o l o g y : The species name, *chagra*, constitutes a noun in apposition and refers to the type locality.

***Enoclerus cinctus* OPITZ nov.sp.** (Figs 11, 71)

T y p e m a t e r i a l : Holotype: ♂. Type locality: Peru, Provincia de Alto Amazonas, Amazonas (MNHN).

D i a g n o s i s : Mostly black; cranium highly setose; elytra mostly testaceous, humeral angle with spot, elytral posterior region with black fascia.

D e s c r i p t i o n : Size: Length 7.0 mm; width 1.3 mm. Form: As in Fig. 11. Head: Capitulum slightly acuminate; (EW/FW 20 /60). Thorax: Elytral disc finely punctate; (PL/PW 110/110); (EL/EW 270/80). Abdomen: Aedeagus (Fig. 71).

E t y m o l o g y : The species name, *cinctus*, constitutes a noun in apposition, it stems from the Latin word "belt".

***Enoclerus colorados* OPITZ nov.sp.** (Figs 12, 72)

T y p e m a t e r i a l : Holotype: ♂. Type locality: Colombia, Bolivar, SFF Los Colorados, La Suiris, 126 m, MT, M 945, 9°54'N 75°7'W, 2-16-XII-2003, E. Deulufeut (WOPC).

D i a g n o s i s : Black; pronotal arch with line of white setae; elytra with prominent gibba and with a triangular patch of white setae, elytra also partially roughly sculptured, and with one yellow circular marking and one short diagonal line.

D e s c r i p t i o n : Size: Length 10.0 mm; width 1.8 mm. Form: As in Fig. 12. Head: Antenna longer than width across eyes; (EW/FW 30/80). Thorax: Elytral disc partially roughly sculptured; (PL/PW 180/180); (EL/EW 360/50). Abdomen: Aedeagus (Fig. 72).

E t y m o l o g y : The species name, *colorados*, constitutes a noun in apposition and refers to the type locality.

***Enoclerus corcovado* OPITZ nov.sp.** (Fig. 13)

T y p e m a t e r i a l : Holotype: ♂. Type locality: Brazil, Corcovado, Guanabara, XI-1961, Seabra e Alvarenga (WOPC).

D i a g n o s i s : Antenna brown; cranium highly setose, setae white; pronotum profusely vested with black seta; elytral ground color black, each elytron base with angular

fascia and transverse fascia, elytra apex with testaceous round marking; legs densely setose.

Description: Size: Length 7.0 mm; width 1.5 mm. Form: As in Fig. 13. Head: Capitulum slightly acuminate; (EW/FW 24/60). Thorax: Elytral disc partially roughly punctate; (PL/PW 150/150); (EL/EW 300/80). Abdomen: Aedeagus not dissected.

Etymology: The species name, *corcovado*, constitutes a noun in apposition and refers to the type locality.

***Enoclerus cosnipata* OPITZ nov.sp.** (Fig. 14)

Type material: Holotype: ♀. Type locality: Peru, Cusco, Santa Isabel, Rio Cosnipata, Sancurtamba. A second label reads: 14-XII-1951, 1,700 meters, Worthowski (WFBM).

Diagnosis: Legs red; body mostly black, except each elytron 2 with yellow maculae, elytral apex setose.

Description: Size: Length 7.0 mm; width 1.5 mm. Form: As in Fig. 14. Head: Capitulum slightly acuminate; (EW/FW 20/78). Thorax: Elytral disc finely punctate; (PL/PW 110/110); (EL/EW 330/80). Abdomen: Female pygidium scutiform.

Etymology: The species name, *cosnipata*, constitutes a noun in apposition and refers to the type locality.

***Enoclerus cundinamarca* OPITZ nov.sp.** (Figs 15, 74)

Type material: Holotype: ♂. Type locality: Colombia, Cundinamarca, Monterredondo, 1,400, leg. Schneble, 1961 (WOPC).

Diagnosis: Frons densely setose, with white setae; elytra mostly black, except each elytron 4 with yellow maculae.

Description: Size: Length 8.0 mm; width 1.6 mm. Form: As in Fig. 15. Head: Capitulum slightly acuminate (EW/FW 35/55). Thorax: Elytral disc finely punctate; (PL/PW 110/110); (EL/EW 310/90). Abdomen: Aedeagus (Fig. 74).

Etymology: The species name, *cundinamarca*, constitutes a noun in apposition and refers to the type locality.

***Enoclerus cura* OPITZ nov.sp.** (Fig. 16)

Type material: Holotype: ♀. Type locality: Trinidad, West Indies, Cura Valley, N10.704, W61.386. 10-VII-10-VIII-2003, A. W. Hook (FSCA). Paratypes: 2 specimens. TRINIDAD: Paria, Brasso Seco, 5-7-VIII-2003, A. W. Hook, Carl Fitz James (UTBC, 1); TRINIDAD: Simla Field Station, Arima Valley, malaise, 30-VI-13-VII-1977, P. Feinsinger (WOPC, 1).

Diagnosis: Pronotum mostly black, anterior margin white; elytra base slightly tumescent, elytra tricolorous, base 1/3 castaneous, 2/3 mostly black, with curvate fascia and with subcircular testaceous marking; antenna, mouthparts, legs, and mesothorax testaceous.

Description: Size: Length 8.0 mm; width 3.0 mm. Form: As in Fig. 16. Head: (EW/FW 30/70). Thorax: Subapical depression well defined; elytra roughly punctate; (PL/PW 140/140); (EL/EW 330/80). Abdomen: Female pygidium scutiform.

Variation: Length 6.0-7.0 mm; width 1.0-1.2 mm.

E t y m o l o g y : The species name, *cura*, constitutes a noun in apposition and refers to the type locality.

***Enoclerus cusco* OPITZ nov.sp.** (Fig. 17)

T y p e m a t e r i a l : Holotype: ♀. Type locality: Peru, Cusco, Santa Isabel, Rio Cosnipata, Sancurtambo. A second label reads: 14-XII-1951, 1,700 meters, Worthowski (WFBM).

D i a g n o s i s : Mostly black, except each elytron 3 with three yellow maculae, anterior two fasciae proximal; elytral apex highly setose.

D e s c r i p t i o n : Size: Length 6.0 mm; width 1.3 mm. Form: As in Fig. 17. Head: Capitulum slightly acuminate; (EW/FW 20/80). Thorax: Elytral disc finely punctate; (PL/PW 90/90); (EL/EW 290/70). Abdomen: Female pygidium scutiform.

E t y m o l o g y : The species name, *cusco*, constitutes a noun in apposition and refers to the type locality.

***Enoclerus fractus* OPITZ nov.sp.** (Figs 21, 78)

T y p e m a t e r i a l : Holotype: ♂. Type locality: Brazil. Rio Grande do Sul, K. E. Hüdepohl. A second label reads: San Francisco de Paula, XI-1959 (MCNZ). Paratype: 1 specimen BRAZIL: Estado do Rio de Grande Sul; San Francisco de Paula, Pró Mata, 20-I-1998, Roland Mecke (WOPC, 1).

D i a g n o s i s : Integument mostly black; capitulum testaceous; elytron with four maculae; femora testaceous.

D e s c r i p t i o n : Size: Length 5.0 mm; width 1.0 mm. Form: As in Fig. 21. Head: Antenna slightly shorter than width across eyes, capitulum slightly compacted; (EW/FW 20/55). Thorax: Pronotal and elytral discs finely punctate; (PL/PW 80/80); (EL/EW 230/65). Abdomen: Aedeagus (Fig. 78).

E t y m o l o g y : The species name, *fractus*, is a Latin name that refers to the fractured portions on the elytral disc.

***Enoclerus farragoinis* OPITZ nov.sp.** (Figs 18, 75)

T y p e m a t e r i a l : Holotype: ♀. Type locality: Panamá, Panamá, Pr. Nat. Metropolitano, 5 August 1995, leg. F. Oedegaard (WOPC). A second label reads: *Phoebe mexicana*. Paratypes: 5 specimens. PANAMÁ: Provincia de Panamá; Parque Nacional Metropolitano, 31-VII-1995, on *Phoebe mexicana* F. Oedegaard (WOPC, 1); Parque Nacional Metropolitano, 28-XII-1995, on *Gouania lupuloides*, F. Oedegaard (WOPC, 1); 27 km E Cañita, 9-II-1992, F. Hovore (WFBM, 1); Pacora, 26-XII-1958, W. J. Hanson (WOPC, 1). COLOMBIA: Departamento de Magdalena, PNN Tayrona, Cerro San Lucas, La Antena, 19-24-VII-2002, Sharkey, Arias, & Torres (JMLC, 1).

D i a g n o s i s : Elytra tricolorous, basal 1/2th castaneous, middle 1/4th black, posterior 1/4th vested with yellow decumbent setae, elytra also with yellow lunulate marking.

D e s c r i p t i o n : Size: Length 8.0 mm; width 1.0 mm. Form: As in Fig. 18. Head: Antenna longer than width across eyes, capitulum slightly compacted; (EW/FW 30/60). Thorax: Subapical depression well defined; base slightly tumescent; (PL/PW 120/120); (EL/EW 300/75). Abdomen: Female pygidium scutiform; aedeagus (Fig. 75).

V a r i a t i o n : Length 7.0-8.0 mm; width 1.0-1.2 mm. The specimen from Colombia is darker in color.

Natural history: F. Oedegaard collected three specimens, two on *Phoebe mexicana* and one on *Gouania lupuloides*.

Etymology: The species name, *farragoinis*, stems from the Latin word "mixture".

***Enoclerus fascia* OPITZ nov.sp.** (Figs 19, 77)

Type material: Holotype: ♂. Type locality: Brazil (MNHN). Paratype: 1 specimen BRAZIL (no other information available) (WOPC, 1).

Diagnosis: Legs testaceous, except tarsi black; body mostly black; elytra with quadrate yellow fascia.

Description: Size: Length 8.5 mm; width 1.4 mm. Form: As in Fig. 19. Head: Capitulum quadrate; EW/FW 20/70. Thorax: Pronotal and elytral discs finely punctate; (PL/PW 110/110); (EL/EW 360/90). Abdomen: Aedeagus (Fig. 77).

Variation: Length 6.5-8.5 mm; width 1.0-1.2 mm.

Etymology: The species name, *fascia*, stems from the Latin word "band".

***Enoclerus fauna* OPITZ nov.sp.** (Figs 20, 76)

Type material: Holotype: ♀. Type locality: Bolivia, Santa Cruz, Buena Vista vic, Flora & Fauna Hotel, 22-26/ X/ 02, Morris & Wappes (FSCA). Paratypes: 3 specimens. BOLIVIA: Departamento de Cochabamba; Germain (MNHN, 1). BRAZIL: Estado do Goiás (MNHN, 1; WOPC, 1).

Diagnosis: Mostly black; tibiae and tarsi red; each elytron with basal blister, each humeral angle with small fascia, side margin of elytron with yellow fascia.

Description: Size: Length 4.0 mm; width 1.5 mm. Form: As in Fig. 2. Head: (EW/FW 20/45). Thorax: Pronotal and elytral discs finely punctate; (PL/PW 85/85); (EL/EW 240/50). Abdomen: Aedeagus (Fig. 76).

Etymology: The species name, *fauna*, constitutes a noun in apposition and refers to the type locality.

***Enoclerus gibboclerus* OPITZ nov.sp.** (Figs 22, 79)

Type material: Holotype: ♂. Type locality: Panamá, Chiriquí, Volcán de Chiriquí, M. de Mathan, 1901 (MNHN). Paratypes: 6 specimens. PANAMÁ: Provincia de Chiriquí; Volcán de Chiriquí, M. de Mathan, 1901 (MNHN, 3; WOPC, 2). COLOMBIA: Departamento de Cauca; Valle de Cauca, M. de Mathan, 1898 (MNHN, 1).

Diagnosis: Elytra with prominent gibba; pronotum proper red; elytra tricolorous, basal 1/2th castaneous, middle 1/2 black, also elytra with yellow lunulate marking; legs red; mesothorax testaceous.

Description: Size: Length 6.0 mm; width 1.0 mm. Form: As in Fig. 22. Head: Antenna longer than width across eyes, capitulum slightly compacted; (EW/FW 30/60). Thorax: Subapical depression well defined; elytra with prominent gibba; (PL/PW 120/120); (EL/EW 300/75). Abdomen: - Aedeagus (Fig. 79).

Variation: Length 7.0-7.5 mm; width 1.0-1.2 mm.

Etymology: The species name, *gibboclerus*, stems from the Latin word "gibbus" and the generic name *Clerus*.

***Enoclerus gorgona* OPITZ nov.sp.** (Figs 23, 80)

Type material: Holotype: ♀. Type locality: Colombia, Cauca, PNN Gorgona, El Saman, 2°58'N 78°11'W, 5 m, Malaise, 11.XII.2001-18-I-2002, H. Torres, Leg. M. 2791 (WOPC). Paratypes: 2 specimens. COLOMBIA: Departamento de Cauca; Isla Gorgona, 30 m, Malaise, 22-III-13-IV-2001, R. Duque (JMLC, 2)

Diagnosis: Integument mostly black; cranium and pronotum densely setose; elytron with oval blister and with three maculae, posterior macula angular, elytral posterior 1/3. highly setose.

Description: Size: Length 6.0 mm; width 1.0 mm. Form: As in Fig. 23. Head: Antenna slightly shorter than width across eyes. capitulum slightly compacted; (EW/FW 20/60). Thorax: Pronotal and elytral discs finely punctate; (PL/PW 90/90); (EL/EW 220/55). Abdomen: Aedeagus (Fig. 80).

Etymology: The species name, *gorgona*, constitutes a noun in apposition and refers to the type locality.

***Enoclerus grenade* OPITZ nov.sp.** (Figs 24, 81)

Type material: Holotype: ♂. Type locality: Colombia, Nouvelle Grenade, Etat Cundinamarca, Cananche, M. de Mathan, 1 Sem. 1900 (MNHN). Paratypes: 4 specimens. COLOMBIA: Departamento de Cundinamarca; Nouvelle Grenade, Cananche, M. de Mathan, 1 Sem. 1900 (MNHN, 2; WOPC, 2).

Diagnosis: Cranium highly setose; pronotum black, highly setose, with minute blister; elytra basal 1/3 red, middle 1/3 with yellow macula, posterior 1/3 black, with patch of white setae.

Description: Size: Length 10.0 mm; width 2.0 mm. Form: As in Fig. 24. Head: Capitulum slightly acuminate; (EW/FW 33/100). Thorax: Elytral disc partially roughly punctate, (PL/PW 180/180); (EL/EW 420/120). Abdomen: Aedeagus (Fig. 81).

Etymology: The species name, *grenade*, constitutes a noun in apposition and refers to the type locality.

***Enoclerus guiana* OPITZ nov.sp.** (Fig. 25)

Type material: Holotype: ♂. Type locality: French Guiana, Amazone Nature Lodge, 30 km SE Roura on Kaw Rd. 5-19-II-2010, J. E. Eger, coll., 300 m., N0 4°33.570' W0 52°12.433' (FSCA) Paratypes: 3 specimens. BRAZIL: Estado do Pará; Bragança, M. de Mathan (MNHN, 2; WOPC, 1).

Diagnosis: Black; each elytron with 3 yellow fasciae.

Description: Size: Length 5.0 mm; width 1.0 mm. Form: As in Fig. 25. Head: (EW/FW 20/40). Thorax: Pronotal and elytral discs finely punctate; (PL/PW 90/90); (EL/EW 230/50). Abdomen: Aedeagus lost.

Etymology: The species name, *guiana*, constitutes a noun in apposition and refers to the type locality.

***Enoclerus huallaga* OPITZ nov.sp.** (Figs 26, 82)

Type material: Holotype: ♂. Type locality: Chambireyacú, près Yurimaguas, Huallaga, M. de Mathan, Juin-Août 1885 (MNHN).

D i a g n o s i s : Integument mostly black; capitulum testaceous; elytron with four maculae.

D e s c r i p t i o n : Size: Length 6.0 mm; width 1.0 mm. Form: As in Fig. 26. Head: Antenna slightly shorter than width across eyes, capitulum slightly compacted; (EW/FW 20/50). Thorax: Pronotal and elytral discs finely punctate; (PL/PW 80/80); (EL/EW 240/61). Abdomen: Aedeagus (Fig. 82).

E t y m o l o g y : The species name, *huallaga*, constitutes a noun in apposition and refers to the type locality.

***Enoclerus huila* OPITZ nov.sp.** (Figs 27, 83)

T y p e m a t e r i a l : Holotype: ♂. Type locality: Colombia, Huila, PNN Cueva de lo Guácheros, Alto El Mirador, 1980 m, 1° 38'N 76°6'W, M 3127, 6-21-IV-2002, J. Fonseca (WOPC, 1). Paratypes: 18 specimens. COLOMBIA: Departamento de Huila; PNN Cueva de los Guácheros, Alto El Mirador, 1980 m, 1° 38'N 76°6'W, M 2541, 27-XI-2-XII-2001, D.Campos (WOPC, 1); Huila; PNN Cueva de los Guácheros, Alto El Mirador, 1980 m, 1° 38'N 76°6'W, M 2922, 6-20-12002, J. Urbano (WOPC, 1). PERU: Provincia de Arequipa; Huambo, M. de Mathan, IV Trim., 1889, (MNHN, 9; WOPC, 3); Provincia de San Martín; Tarapoto, May-August 1886, M. de Mathan (MNHN, 1). Provincia de Moyobamba; 1888, M. de Mathan MNHN, 3).

D i a g n o s i s : Elytra with prominent gibba; cranium with two black spots; epicranium black; pronotal proper bicolored, mostly red; elytra tricolorous, anterior basal 1/3 castaneous, middle 1/3 mostly black, with subcircular testaceous marking, posterior 1/3 black; antenna, mouthparts, legs, and mesothorax testaceous.

D e s c r i p t i o n : Size: Length 8.0 mm; width 1.3 mm. Form: As in Fig. 27. Head: (EW/FW 18/56). Thorax: Subapical depression well defined; elytra roughly punctate; (PL/PW 120/120); (EL/EW 330/80). Abdomen: Aedeagus (Fig. 83).

V a r i a t i o n : The extent of black coloration on the pronotum varies. Length 5.0-7.0 mm; width 1.0-1.2 mm.

E t y m o l o g y : The species name, *huila*, constitutes a noun in apposition and refers to the type locality

***Enoclerus itajura* OPITZ nov.sp.** (Figs 28, 84)

T y p e m a t e r i a l : Holotype: ♂. Type locality: Colombia, Vaupés Estación Biológica Mosiro-Itajura (Caparú), Centro Ambiental, 1°04'S 69°31'W, 60 m, Malaise, 17-24-XI-2003, J. Pinzón, Leg. M. 4436 (WOPC).

D i a g n o s i s : Mostly black, each elytron with 4 yellow maculae.

D e s c r i p t i o n : Size: Length 6.0 mm; width 1.0 mm. Form: As in Fig. 28. Head: Antenna slightly longer than width across eyes; capitulum slightly acuminate; (EW/FW 20/55). Thorax: Pronotal and elytral discs finely punctate; (PL/PW 110/110); (EL/EW 250/60). Abdomen: Aedeagus (Fig. 84).

E t y m o l o g y : The species name, *itajura*, constitutes a noun in apposition and refers to the type locality.

***Enoclerus junin* OPITZ nov.sp.** (Figs 29, 85)

Type material: Holotype: ♀. Type locality: Peru, Junin, Sani Beni, 340 m, 22-VIII-1935, F. Woytkowsky (WOPC). Paratypes: 19 specimens. PERU: Provincia de Loreto; Constanca, January 1857, H. Clark (MNHN, 1; WOPC, 1); idem, J. Grey (MNHN, 4; WOPC, 2); Petropolis, February 1857, H. Clark (MNHN, 1); Provincia de San Martin; Tarapoto, Mai á Août 1886, M. de Mathan (MNHN, 2; WOPC, 2). BRAZIL: Estado de Rio de Janeiro; Nova Friburgo, February 1884, P. Germain (MNHN, 1); Estado do Rio de Janeiro (WOPC, 1). Estado do Rondonia; 62 km SE Ariquemes, near Fazenda Rancho Grande, 30-III-10-IV-1992, J. E. Eger (FSCA, 1); Estado do Santa Catarina; Nova Teutonia, ?-XII-1977, 300-500 m, F. Plaumann (WOPC, 1); Estado do Gerais; Serra do Caraça, 27-XI-a-5-XII-1972, Exp. Mus. Zool (MZSP, 1). Brazil (MNHN, 1).

Diagnosis: Mostly black. Pronotal arch, elytral anterior 1/3, and elytral apex highly setose; elytral middle with triangular testaceous fascia.

Description: Size: Length 6.0 mm; width 1.5 mm. Form: As in Fig. 29. Head: (EW/FW 20/60). Thorax: Pronotal and elytral discs finely punctate; (PL/PW 120/120); (EL/EW 240/70). Abdomen: Aedeagus (Fig. 85).

Variation: Length 5.0-7.0 mm; width 1.0-1.2 mm.

Etymology: The species name, *junin*, constitutes a noun in apposition and refers to the type locality.

***Enoclerus kaw* OPITZ nov.sp.** (Figs 30, 86)

Type material: Holotype: ♀. Type locality: French Guiana, Amazone Nature Lodge, Kaw Rd. 6, 11-23-VIII-2017, MV lights, Morris & Wappes (WOPC). Paratypes: 2 specimens. FRENCH GUIANA: Commune de Roura: Amazone Nature Lodge, Kaw Rd. 6, 11-23-VIII-2017, MV lights, Morris & Wappes (RFMC, 1); Roura: Amazone Nature Lodge, Montague de Kaw Kaw Rd. (D-6), PK 38, 11-23-VII-2017, El. 970 feet, MV Lights, 4°33'N 52°11', W. Morris & Wappes (RFMC, 1).

Diagnosis: Elytra with two yellow markings and with an extended angular marking; legs red.

Description: Size: Length 7.0 mm; width 1.0 mm. Form: As in Fig. 30. Head: (EW/FW 20/40). Thorax: Subapical depression well defined; pronotal and elytral discs finely punctate; (PL/PW-95/95); (EL/EW 240/60). Abdomen: Aedeagus (Fig. 86).

Etymology: The species name, *kaw*, constitutes a noun in apposition and refers to the type locality.

***Enoclerus larioja* OPITZ nov.sp.** (Figs 31, 87)

Type material: Holotype: ♂. Type locality: Argentina, La Rioja, Alpasinche, S. Blas Sauces, 25-XI-2003, C. Porter (WOPC).

Diagnosis: Capitulum testaceous; elytra mostly black, each elytron with testaceous basal punctiform marking and with testaceous lunulate fasciae.

Description: Size: Length 7.0 mm; width 1.0 mm. Form: As in Fig. 31. Head: (EW/FW 20/50). Thorax: Pronotal and elytral discs slightly roughened punctate; (PL/PW 105/105); (EL/EW 260/60). Abdomen: Aedeagus (Fig. 87).

Etymology: The species name, *larioja*, constitutes a noun in apposition and refers to the type locality.

***Enoclerus loreto* OPITZ nov.sp.** (Fig. 32)

Type material: Holotype: ♂. Type locality: Peru, Loreto, Amazonas, Iquitos, Novembre 1879, M. de Mathan (MNHN).

Diagnosis: Antenna and cranium testaceous; pronotum black; elytra bicolorous, each elytron with three testaceous fasciae, two basal fasciae quadrate, apical fascia. small; legs brown.

Description: Size: Length 7.0 mm; width 1.2 mm. Form: As in Fig. 32. Head: (EW/FW 30/60). Thorax: Pronotal and elytral discs finely punctate; (PL/PW 110/110); (EL/EW 270/70). Abdomen: Aedeagus lost.

Etymology: The species name, *loreto*, constitutes a noun in apposition and refers to the type locality

***Enoclerus losvolcanes* OPITZ nov.sp.** (Figs 33, 88)

Type material: Holotype: ♀. Type locality: BOLIVIA: S. Cruz Dept; 4 km N Bermejo, 11-17-December-2012, Wappes & Skillman. A second label reads: Refugio los Volcanes, 18°16' S 63°36', 1045-1350, meters (FSCA). Paratypes: 4 specimens. PERU: Provincia de San Martin; Tarapoto, Amazonas, 4 Timestre, 1885, M. de Mathan (WOPC, 1); San Martin; Tarapoto, Mai á Août, 1886, M. de Mathan (MNHN, 3).

Diagnosis: Cranium highly setose; pronotum black, highly setose; elytra base and apex highly setose, each elytron with circular fascia; legs densely setose.

Description: Size: Length 9.0 mm; width 2.0 mm. Form: As in Fig. 33. Head: Capitulum slightly acuminate; (EW/FW 33/88). Thorax: Elytral disc partially roughly punctate; (PL/PW 160/160); (EL/EW 400/40). Abdomen: Aedeagus (Fig. 88).

Etymology: The species name, *losvolcanes*, constitutes a noun in apposition and refers to the type locality.

***Enoclerus luridus* OPITZ nov.sp.** (Figs 34, 89)

Type material: Holotype: ♂. Type locality: Colombia, Amazonas, PNN Amacayacu, Matamata, 150 m, MT, M 78, 3°41'S70°15'W, 27-III-3-IV-2000, A. Parente (WOPC, 1).

Diagnosis: Black, except elytra with pair of yellow fascia that traverse elytral margins.

Description: Size: Length 6.0 mm; width 1.2 mm. Form: As in Fig. 34. Head: (EW/FW 20/55). Thorax: Elytral disc finely punctate, (PL/PW 110/110); (EL/EW 260/70). Abdomen: Aedeagus (Fig. 89).

Etymology: The species name, *luridus*, is a Latin adjective with a meaning of "yellow".

***Enoclerus maldonado* OPITZ nov.sp.** (Figs 35, 90)

Type material: Holotype: ♂. Type locality: Peru, Madre de Dios, Puerto Maldonado, 16-XI-2014, 267 m, 12.56104 °S, 71. 10645°W, T. Pérez, Melaise Trap (WOPC). Paratypes: 7 specimens. BOLIVIA: Departamento de La Paz, Callanga, G. Garlepp (WOPC, 2); La Paz, Callanga (WOPC, 1). PERU: Provincia de Moyobamba; M. de Mathan, 1888 (MNHN, 1); Provincia de Satipo; 15-IX-1941, P. Paprzycki (WFBM, 1); Provincia de Alto Amazonas, 1894 (MNHN, 2).

D i a g n o s i s : Cranium red; antenna and femora bicolored; pronotum mostly black, with faint red spot; each elytron 4 with yellow fasciae.

D e s c r i p t i o n : Size: Length 6.0 mm; width 2.0 mm. Form: As in Fig. 35. Head: (EW/FW 20/50). Thorax: Pronotal and elytral discs finely punctate; (PL/PW 110/110); (EL/EW 220/70). Abdomen: Aedeagus (Fig. 90).

V a r i a t i o n : The pronotum is mostly red in some specimens. Length 5.0-7.0 mm; width 1.0-1.2 mm.

E t y m o l o g y : The species name, *maldonado*, constitutes a noun in apposition and refers to the type locality.

***Enoclerus mata* OPITZ nov.sp.** (Fig. 37)

T y p e m a t e r i a l : Holotype: ♀. Type locality: Brazil, (Rio Grande do Sul), S FCO de Paula, Pró-Mata, *Araucaria angust.*, 3-XII-1997, Leg. Roland Mecke (WFBM).

D i a g n o s i s : Elytra mostly black, roughly sculptured, each elytron with three punctiform markings; legs testaceous.

D e s c r i p t i o n : Size: Length 6.0 mm; width 1.5 mm. Form: As in Fig. 37. Head: (EW/FW 20/60). Thorax: Pronotal and elytral discs finely punctate; (PL/PW 95/95); (EL/EW 240/70). Abdomen: Female pygidium scutiform.

E t y m o l o g y : The species name, *mata*, constitutes a noun in apposition and refers to the type locality.

***Enoclerus matamata* OPITZ nov.sp.** (Figs 36, 91)

T y p e m a t e r i a l : Holotype: ♂. Type locality: Colombia, Amazonas, PNN Amacayacu, Matamata, 150 m, MT, M 3273, 3°41'S 70°15'W, 8-12-III-2000, M. Sharkey (WOPC).

D i a g n o s i s : Mostly black, except each elytron with testaceous tripartite-trigonal marking with and posterior linear marking.

D e s c r i p t i o n : Size: Length 8.0 mm; width 1.0 mm. Form: As in Fig. 36. Head: Frons rough; antenna longer than width across eyes; capitulum slightly acuminate; (EW/FW 35/50). Thorax: Pronotal and elytral discs finely punctate; (PL/PW 130/130); (EL/EW 300/60). Abdomen: Aedeagus (Fig. 91).

E t y m o l o g y : The species name, *matamata*, constitutes a noun in apposition and refers to the type locality.

***Enoclerus meta*, OPITZ nov.sp.** (Fig. 38)

T y p e m a t e r i a l : Holotype: ♀. Type locality: Colombia, Meta, PNN Tinigua, Caño Nevera, 2°11'N 73°40'W, 390 m, Malaise 1, 20-23.XII.2001, D. Campos Leg. M. 2621 (WOPC).

D i a g n o s i s : Integument mostly black; capitulum testaceous; cranium and pronotal arch densely setose; elytron with basal oval blister and with three maculae, posterior macula trigonal.

D e s c r i p t i o n : Size: Length 6.0 mm; width 1.0 mm. Form: As in Fig. 38. Head: Antenna slightly shorter than width across eyes, capitulum slightly compacted; (EW/FW 20/60). Thorax: Elytral base with distinct bulla; pronotal and elytral discs finely punctate;

(PL/PW 100/100); (EL/EW 250/60). Abdomen: Female pygidium scutiform.

E t y m o l o g y : The species name, *meta*, constitutes a noun in apposition and refers to the type locality.

***Enoclerus monteverde*, OPITZ nov.sp.** (Fig. 39)

T y p e m a t e r i a l : Holotype: ♀. Type locality: Brazil, Minas Gerais, Monte Verde, I-XII-1961, J. Halik, 17443 (AMNH). Paratypes: 6 specimens. BRAZIL: Estado do Minas Gerais; Monte Verde, 18-XI-1966, Halik (WOPC, 1); idem, 5-XII-1964, J. Halik (AMNH, 1); Estado do São Paulo; Serra da Cantareira, 1,000 m, ?-I-1953, G. H.Nick (WOPC, 1); idem, ?-XI-?, B. Poln (WFBM, 1); São Paulo; Estación Biologica Boraceia, Salesópolis, 14-18-XI-1973, Exp. Mus. Zool. (MZSP, 1); São Paulo; Mráz, no other information available (WOPC, 1).

D i a g n o s i s : Mostly black. Pronotal arch, elytral anterior 1/3, and elytral apex highly setose, elytral middle with broad testaceous fascia.

D e s c r i p t i o n : Size: Length 7.0 mm; width 1.5 mm. Form: As in Fig. 39. Head: (EW/FW 20/60). Thorax: Pronotal and elytral discs finely punctate; (PL/PW 120/120); (EL/EW 240/70). Abdomen: Aedeagus lost.

V a r i a t i o n : Length 5.0-7.0 mm; width 1.0-1.2 mm.

E t y m o l o g y : The species name, *monteverde*, constitutes a noun in apposition and refers to the type locality.

***Enoclerus morrissi* OPITZ nov.sp.** (Figs 40, 92)

T y p e m a t e r i a l : Holotype: ♂. Type locality: Bolivia, Beni, 15-20 km east Rurrenabaque, 13-18/X/2004, Morris & Wappes (FSCA).

D i a g n o s i s : Antenna bicolorous; cranium black; pronotum part black and part red; elytra mostly flavotestaceous, with some pink regions, also each elytron with black fasciae; legs flavotestaceous.

D e s c r i p t i o n : Size: Length 5.0 mm; width 1.3 mm. Form: As in Fig. 40. Head: (EW/FW 20/50). Thorax: Elytral asetiferous punctures small; (PL/PW 90/90); (EL/EW 220/65). Abdomen: Aedeagus (Fig. 92).

E t y m o l o g y : The species name, *morrissi*, honors Roy F. Morris for his contributions to Systematic Entomology.

***Enoclerus napo* OPITZ nov.sp.** (Figs 41, 93)

T y p e m a t e r i a l : Holotype: ♂. Type locality: Ecuador, Napo, Archidona, XII-1986, R.Cordero (WOPC). Paratype: 1 specimen. COLOMBIA: Departamento de Bolivar; SFF Los Colorados, Villa Roca, 9°54'N 75°7'W, 180 m, 7-22-V-2001, Malaise, M. 1722, E. Deulufeut (WOPC, 1).

D i a g n o s i s : Cranium and pronotum black; base of legs and pterothorax red; basal of elytra red, with prominent white fascia, and with patch of white setae at apex, remainder of elytra black.

D e s c r i p t i o n : Size: Length 6.0 mm; width 1.2 mm. Form: As in Fig. 41. Head: (EW/FW 20/50). Thorax: Elytral disc partially roughly sculptured; (PL/PW 180/180); (EL/EW 260/40). Abdomen: Aedeagus (Fig. 93).

E t y m o l o g y : The species name, *napo*, constitutes a noun in apposition and refers to the type locality.

***Enoclerus nova* OPITZ nov.sp.** (Figs 42, 94)

T y p e m a t e r i a l : Holotype: ♂. Type locality: Brazil, Nova Teutonia (WFBA), Paratypes: 5 specimens. BRAZIL: Estado do Nova Teutonia (WFBM, 3; WOPC, 2).

D i a g n o s i s : Mostly black; antennae testaceous; each elytron with four testaceous markings.

D e s c r i p t i o n : Size: Length 6.0 mm; width 1.0 mm. Form: As in Fig. 42. Head: (EW/FW 20/45). Thorax: Pronotal and elytral discs minutely punctate; (PL/PW 80/80); (EL/EW 230/55). Abdomen: Aedeagus (Fig. 94).

V a r i a t i o n : Length 5.5-7.0 mm; width 1.0-1.1 mm.

E t y m o l o g y : The species name, *nova*, constitutes a noun in apposition and refers to the type locality.

***Enoclerus octavus* OPITZ nov.sp.** (Figs 43, 95)

T y p e m a t e r i a l : Holotype: ♂. Type locality: Brazil, Rio Grande do Sul. San Francisco de Paula, Pró-Mata, 11-XI-1998, baited window trap (EtOh), Leg. Roland Mecke (MCNZ), Paratype: 1 specimen. BRAZIL: Estado do Rio Grande do Sul; San Francisco de Paula, Taimbézinho, ?-XI-1960, K. E. Hüdepohl (WOPC, 1).

D i a g n o s i s : Mostly black; antennae legs testaceous; each elytron with four testaceous markings.

D e s c r i p t i o n : Size: Length 7.0 mm; width 1.0 mm. Form: As in Fig. 43. Head: (EW/FW 20/45). Thorax: Pronotal and elytral discs minutely punctate; (PL/PW 95/95); (EL/EW 240/65). Abdomen: Aedeagus (Fig. 95).

E t y m o l o g y : The species name, *octavus*, constitutes a noun in apposition.

***Enoclerus ordinis* OPITZ nov.sp.** (Figs 44, 96)

T y p e m a t e r i a l : Holotype: ♂. Type locality: French Guiana, 32 km SE Roura on Kaw Rd. 15-II-2010, J. E. Eger, MV light, 287 m (FSCA). Paratypes: 3 specimens. FRENCH GUIANA: Commune de Roura; 32 km SE Roura on Kaw Rd. 15-II-2010, J. E. Eger, MV light, 287 m (FSCA, 1); Roura; Amazone Nature Lodge, Kaw Rd. 6, 11-23-VIII-2017, MV lights, Morris & Wappes (RFMC, 1). BRAZIL: Estado do Goiás; Serra Negra, 220 m, Serra da Mesa, 2-X-1995, D. S. Rogers (BYUC).

D i a g n o s i s : Elytra with three yellow markings and with an extended angular marking; legs red.

D e s c r i p t i o n : Size: Length 7.0 mm; width 1.0 mm. Form: As in Fig. 44. Head: (EW/FW 22/40). Thorax: Subapical depression well defined; pronotal and elytral discs finely punctate; (PL/PW-110/110); (EL/EW 260/60). Abdomen: Aedeagus (Fig. 96).

E t y m o l o g y : The species name, *ordinis*, is a Latin noun with the meaning of "line".

***Enoclerus para* OPITZ nov.sp.** (Figs 45, 97)

T y p e m a t e r i a l : Holotype: ♂. Type locality: Brazil, Para, Jacareacanga, ?-VI-1969, F. R. Barbosa (WOPC).

D i a g n o s i s : Venter, antenna, and legs testaceous; cranium and pronotum arch black; pronotum proper and mesoscutellum testaceous; elytron mostly black, glabrous, disk with yellow rectangular fascia and punctiform marking.

D e s c r i p t i o n : Size: Length 5.0 mm; width 1.0 mm. Form: As in Fig. 45. Head: Capitulum oblong; (EW/FW 15/45). Thorax: Elytral disc minutely punctate; (PL/PW 70/70); (EL/EW 210/60). Abdomen: Aedeagus (Fig. 97).

E t y m o l o g y : The species name, *para*, constitutes a noun in apposition and refers to the type locality.

***Enoclerus paula* OPITZ nov.sp.** (Figs 46, 98)

T y p e m a t e r i a l : Holotype: ♂. Type locality: Brazil, (Rio Grande do Sul), S FCO de Paula, Pró-Mata, 12-XII-1997, Leg. Roland Mecke (WFBM). Paratype: 1 specimen. BRAZIL: Estado do Minas Gerais; ?-?-1907 (MNHN, 1).

D i a g n o s i s : Cranium, antenna, and legs flavotestaceous; pronotum bicolorous, black and flavotestaceous; elytra with yellow punctiform marking; elytra tricolorous, basal 1/3 flavotestaceous, then with white lunar-shaped fascia followed by broad black fascia, elytra apex flavotestaceous.

D e s c r i p t i o n : Size: Length 5.0 mm; width 1.0 mm. Form: As in Fig. 46. Head: Capitulum slightly acuminate; (EW/FW 20/50). Thorax: Elytral disc partially roughly punctate; (PL/PW 90/90); (EL/EW 240/60). Abdomen: Aedeagus (Fig. 98).

E t y m o l o g y : The species name, *paula*, constitutes a noun in apposition and refers to the type locality.

***Enoclerus pedraazul* OPITZ nov.sp.** (Figs 47, 99)

T y p e m a t e r i a l : Holotype: ♂. Type locality: Brazil, Minas Gerais, Pedra Azul, 800 m, XI-71, Oliveira (WOPC). Paratypes: 9 specimens. BRAZIL: Estado do São Paulo; Parque Jabaguara, ?-XII-1945 (WOPC, 1); Rio de Janeiro (Guanabara), Corcovado, ?-IX-1961, Seabra y Alvarenga WOPC, 1); Estado do Bahia; San Antonio da Barra, 1890, Ch. Pujol (WOPC, 1); Bahia; Villa Victoria, 1890, Ch. Pujol (MNHN, 5; WOPC, 1).

D i a g n o s i s : Mostly black; with yellow elytral fascia, fascia highly setose.

D e s c r i p t i o n : Size: Length 7.0 mm; width 1.0 mm. Form: As in Fig. 47. Head: Capitulum slightly acuminate; (EW/FW 20/60). Thorax: Pronotal and elytral discs finely punctate; (PL/PW 100/90); (EL/EW 270/70). Abdomen: Aedeagus (Fig. 99).

V a r i a t i o n : Length 6.0-8.0 mm; width 1.0-1.2 mm.

E t y m o l o g y : The species name, *pedraazul*, constitutes a noun in apposition and refers to the locality.

***Enoclerus pictilis* OPITZ nov.sp.** (Figs 48, 100)

T y p e m a t e r i a l : Holotype: ♂. Type locality: French Guiana, 13 km W of Risquetout, 8-VI-2005, J. E. Eger & M. T. Messenger, MV light, NO4°54.028' WO 52°34.494' (FSCA). Paratypes: 2 specimens. FRENCH GUIANA: Commune de Roura; Kaw Rd., Pk 37, 17-18-VIII-1985, J. E. Wappes (ACMT, 1); Commune de Kourou; Pariacabo, 1906, E. Le Moulton (MNHN, 1).

D i a g n o s i s : Cranium and prothorax red; elytra mostly black, each elytron with large yellow fascia; legs mostly red.

Description: Size: Length 6.0 mm; width 1.0 mm. Form: As in Fig. 48. Head: (EW/FW 22/50). Thorax: Subapical depression well defined; pronotal and elytral discs finely punctate; (PL/PW-110/110); (EL/EW 240/60). Abdomen: Aedeagus (Fig. 100).

Etymology: The species name, *pictilis*, is a Latin word with the meaning of "colored".

***Enoclerus pictus* OPITZ nov.sp.** (Figs 49, 73)

Type material: Holotype: ♀. Type locality: Paraguay, Dr. Bohls (MNHN). Paratypes: 2 specimens. PARAGUAY: date not noted. Dr. Bohls (MNHN, 1; WOPC, 1).

Diagnosis: Antenna, legs and pterothorax testaceous; cranium and, pronotal arch black, pronotal proper setaceous; elytra basal 1/3 testaceous middle 2/3 mostly black, except with a narrow fascia and broader lunulate fascia, elytral apex highly setose; abdomen black.

Description: Size: Length 7.0 mm; width 1.4 mm. Form: As in Fig. 49. Head: Capitulum slightly acuminate; (EW/FW 21/65). Thorax: Elytral disc slightly roughened (PL/PW 110/110); (EL/EW 270/95). Abdomen: Aedeagus (Fig. 73).

Etymology: The species name, *pictus*, relates to the colorful appearance of this beetle.

***Enoclerus rio* OPITZ nov.sp.** (Figs 51, 101)

Type material: Holotype: ♂. Type locality: Brazil, Papurucuara am, Rio Negro, Amazonas, 4-II-1963, C. Lindemann (RGCM). Paratype: 1 specimen. BRAZIL: Estado do Amazonas; Papurucuara, Rio Negro, ?-4-1963, C. Lindemann (WOPC, 1).

Diagnosis: Antennae and legs testaceous; elytra with three yellow markings.

Description: Size: Length 4.0 mm; width 0.8 mm. Form: As in Fig. 51. Head: (EW/FW 1.8/30). Thorax: Subapical depression well defined; pronotal and elytral discs finely punctate; (PL/PW-70/70); (EL/EW 180/40). Abdomen: Aedeagus (Fig. 101).

Etymology: The species name, *rio*, constitutes a noun in apposition and refers to the type locality.

***Enoclerus riocuare* OPITZ nov.sp.** (Figs 50, 102)

Type material: Holotype: ♀. Type locality: Colombia, Caquetá, PNN Serrania de Chiribiquette, Río Cuñaré, 300 m, MT, 0°31'N 72°38'W, M 959; 10-14-XI-2000, M. Ospiona (WOPC). Paratypes: 23 specimens. COLOMBIA: Departamento de Putumayo; PNN La Playa Cabaña, Viviano Concha, 320 m, MT, 0°07'S 74°56'W. M 2794, 30-XI-15-XII-2001, E. Lozano (JMLC, 1). Putumayo; PNN La Playa Cabaña, Viviano Concha, 330 m, MT, 0°02'S 74°12'W. M 2074, 24-25-IX-2001, E. Lozano (JMLC, 1); Departamento de Amazonas; PNN Amacayacu, Matamata, 150 m, MT, M 844, 3°41'S 70°15'W, 21-28-VIII-2000, A. Parente (WOPC, 1). Amazonas; PNN Amacayacu, San Martín, Malaise, 150 m, MT, M 696, 3°46'S 70°18'W, 6-12-VI-2000, B. Amado (WOPC, 1). ECUADOR: Provincia de Sucumbios; Sacha Lodge, 0.5S 76.5W, 270 m, 14-24-V-1994, Hibbs, Malaise (SEMC, 2); Sucumbios, Sacha Lodge, 0.5S 76.5W, 270 m, 23-VII-3-VIII-1994, Hibbs, Malaise (SEMC, 1); Sucumbios; Sacha Lodge, 0.5S 76.5W, 270 m, 25-VII-3-VIII-1994, Hibbs, Malaise (SEMC, 1); Sucumbios; Sacha Lodge, 0.5S 76.5W, 270 m, 27-VIII-10-IX-1994, Hibbs, Malaise (SEMC, 1); Provincia de Napo; Puerto Napo, 17-VI-1984, R. Haswell (TAMU, 1). PERU: Provincia de Huanuco; vic. Tingo Maria, 1-5-VI-1999, W. S. Keller (WOPC, 1); Provincia de San Martín; Tarapoto, May-August 1886, M de Mathan (MNHN, 7); Provincia de Satipo; 15-IX-1941, P. Paprzycki (WFBM, 1); Provincia de Callao; Huambo, M de

Mathan, IV Trim, 1889 (WOPC, 2). BRASIL: Estado do Amazonas; Teffé, Ega, M de Mathan, 1 Trimestre, 1879 (MNHN, 1); Amazonas; Rio Negro, Tapurucuara, 22-XI-1962, C. Lindemann (RGCM, 1).

D i a g n o s i s : Elytra mostly black, except each elytron 3 with three yellow maculae, anterior two maculae nearly contiguous; elytral apex highly setose.

D e s c r i p t i o n : Size: Length 7.0 mm; width 1.1 mm. Form: As in Fig. 50. Head: Capitulum slightly acuminate; (EW/FW 25/60). Thorax: Elytral disc finely punctate; (PL/PW 120/120); (EL/EW 370/60). Abdomen: Aedeagus (Fig. 102).

V a r i a t i o n : Length 6.0-8.0 mm; width 1.0-1.2 mm.

E t y m o l o g y : The species name, *riocuare*, constitutes a noun in apposition.

***Enoclerus rionegro* OPITZ nov.sp.** (Figs 52, 103)

T y p e m a t e r i a l : Holotype: ♂. Type locality: Bolivia, Rio Negro, 2600 m, 24-27-II-1960, R. Golbach (MNHN). Paratypes: 3 specimens. BOLIVIA: Departamento de Santa Cruz; Rio Negro, 2,600 m, 24-27-II-1960, R. Golbach (MNHN, 2; WOPC, 1).

D i a g n o s i s : Mostly black; antenna and legs red; each elytron 3 with yellow fasciae.

D e s c r i p t i o n : Size: Length 5.0 mm; width 1.7 mm. Form: As in Fig. 52. Head: (EW/FW 20/50). Thorax: Pronotal and elytral discs finely punctate; (PL/PW 85/85); (EL/EW 210/60). Abdomen: Aedeagus (Fig. 103).

E t y m o l o g y : The species name, *rionegro*, constitutes a noun in apposition and refers to the type locality.

***Enoclerus rondonia* OPITZ nov.sp.** (Figs 53, 104)

T y p e m a t e r i a l : Holotype: ♀. Type locality: Brazil, Rondonia, 62 km SE Ariquemes, 22-31 Oct.1997, W. J. Hanson (WOPC). Paratypes: 5 specimens. BRAZIL: Estado do Rondonia; 62 km SE Ariquemes, 22-31 Oct.1997, W. J. Hanson (WOPC, 1); idem, 7-18-XI-1995, W. J. Hanson (EMUS, 1); idem, Fazenda Rancho Grande, 4-16-XI-1997, J. E. Eger (FSCA, 1); idem, 1-17-XI-1997, B. K. Dozier (FSCA, 1); Estado do Amazonas; Teffé (Ega), M. de Mathan, 2E Trimestre, 1879 (MNHN, 1).

D i a g n o s i s : Mostly black; cranium and pronotal arch red; each elytron 4 with yellow maculae, anterior two fasciae proximal.

D e s c r i p t i o n : Size: Length 6.0 mm; width 1.2 mm. Form: As in Fig. 53. Head: Capitulum quadrate; (EW/FW 20/70). Thorax: Elytral disc finely punctate; (PL/PW 95/95); (EL/EW 240/70). Abdomen: Aedeagus (Fig. 104).

E t y m o l o g y : The species name, *rondonia*, constitutes a noun in apposition and refers to the type locality.

***Enoclerus rubidus* OPITZ nov.sp.** (Fig. 54)

T y p e m a t e r i a l : Holotype: ♀. Type locality: Peru, Constancia, Jan. 1857, H. Clark (MNHN).

D i a g n o s i s : Antenna, mouthparts, cranium, pronotum, and legs red; elytron mostly black, each elytron with two yellow 2 fasciae.

D e s c r i p t i o n : Size: Length 7.0 mm; width 1.5 mm. Form: As in Fig. 54. Head: (EW/FW 20/50). Thorax: Pronotal and elytral discs finely punctate; (PL/PW 120/120); (EL/EW 290/80). Abdomen: Female pygidium scutiform.

E t y m o l o g y : The species name, *rubidus*, is a Latin word that stems from "rubeo" (to be red).

***Enoclerus rubra* OPITZ nov.sp.** (Fig. 55)

T y p e m a t e r i a l : Holotype: ♀. Type locality: Bolivia, 31-VIII-89, NW Rurrenabaque, Tumupasa (RGCM).

D i a g n o s i s : Antenna, mouthparts, cranium, and pronotum red; legs and venter black; each elytron with two angular conjoined lines and 2 linear fasciae.

D e s c r i p t i o n : Size: Length 6.0 mm; width 1.5 mm. Form: As in Fig. 55. Head: (EW/FW 20/50). Thorax: Pronotal and elytral discs finely punctate; (PL/PW 90/90); (EL/EW 240/70). Abdomen: Female pygidium scutiform.

E t y m o l o g y : The species name, *rubra*, is a Latin adjective and means "red".

***Enoclerus sinop* OPITZ nov.sp.** (Figs 56, 105)

T y p e m a t e r i a l : Holotype: ♂. Type locality: Brazil, Sinop, Mato Grosso, X-1976. M. Alvarenga (WOPC). Paratypes: 23 specimens. BRAZIL: Estado do Mato Grosso; Mato Grosso, 1886, P. Germain (MNHN, 1); Sinop, X-1976. M. Alvarenga (WOPC, 2); Sinop, Villa Vera, Mato Grosso, X-1973, M. Alvarenga (WOPC, 1); Mato Grosso, X-1973, M. Alvarenga (WOPC, 1); Mato Grosso, X-1975, M. Alvarenga (WOPC, 1); Estado do Rondonia; 62 km SW Ariquemes, near Fzda, Rancho Grande, 1-17-1997, B. K. Dozier (FSCA, 3); Rondonia, 62 km SW Ariquemes, near Fzda, Rancho Grande, 6-X-1993, C. W. & L. B. O'Brien (FSCA, 1). Rondonia, Linea off B65 at the Rio Pardo -60 km S Ariquemes, 30-XI-1991, S. L. Heydon (UCDC, 1); Estado do Amazonia, Ega (MNHN, 1). COLOMBIA: Departamento de Putumayo: PNN La Playa Cabaña, Chagra, 320 m, 1-15-XII-2001, E. Lozano (RHTC, 1); Putumayo, PNN La Playa Cabaña, Chagra, 320 m elevation, 1-15-XI-2001, R. Cobete (JNRC, 1; JMLC, 2); Putumayo, PNN La Playa Cabaña, Viviano Cocha, 320 m, Malaise, 20-26-IX-2001, D. Campos (USNM, 1); Colombia (MNHN, 1). FRENCH GUIANA: Commune de Roura; Amazone Nature Lodge, Kaw Rd. 6, 11-23-VIII-7017, MV lights, Morris & Wappes (RFMC, 1); Amazone Nature Lodge, Kaw Rd. 6, 1-12-IX-2018, 977 feet, Malaise, Morris & Wappes (RFMC, 1). PERU: Provincia de Alto Amazonas; Amazon (MNHN, 1); Itaituba, Hahnel (MNHN, 2).

D i a g n o s i s : Integument mostly black; capitulum red; elytral base with y-shaped marking and transverse marking, both markings yellow.

D e s c r i p t i o n : Size: Length 7.0 mm; width 1.0 mm. Form: As in Fig. 56. Head: (EW/FW 25/55); Thorax: Subapical depression well defined; pronotal and elytral discs finely punctate; (PL/PW 120/120); (EL/EW 270/75). Abdomen: Aedeagus (Fig. 105).

V a r i a t i o n : In some specimens the basal short fascia is not connected, and the y-shaped marking and transverse marking may be contiguous. Length 5.0-7.0 mm; width 1.0-1.2 mm.

E t y m o l o g y : The species name, *sinop*, constitutes a noun in apposition and refers to the type locality.

***Enoclerus teutonia* OPITZ nov.sp.** (Figs 57, 106)

T y p e m a t e r i a l : Holotype: ♂. Type locality: Brazil, Nova Teutonia, 27°11' B 52° 23', E 300-500 m, I-1973, Fritz Plaumann (WFBM). Paratypes: 3 specimens. BRAZIL: Estado do Santa Catarina; Nova Teutonia, ?-II-1974, F. Plaumann (WOPC, 2); idem, collection date not noted, collector not noted (WFBM, 2).

D i a g n o s i s : Mostly black; antennae, tibiae, and tarsi testaceous; elytra with three yellow markings; elytral apex setose.

D e s c r i p t i o n : Size: Length 7.0 mm; width 1.1 mm. Form: As in Fig. 57. Head. (EW/FW 20/50). Thorax: Subapical depression well defined; pronotal and elytral discs finely punctate; (PL/PW-110/110); (EL/EW 240/75). Abdomen: Aedeagus (Fig. 106).

E t y m o l o g y : The species name, *teutonia*, constitutes a noun in apposition and refers to the type locality.

***Enoclerus tucuman* OPITZ nov.sp.** (Figs 58, 107)

T y p e m a t e r i a l : Holotype: ♂. Type locality: Argentina, 800, Tucuman, Ciudad Universitaria, 18-II-1959, J. F. G. Clarke (WFBM). Paratypes: 3 specimens. ARGENTINA: Provincia de Córdoba; Córdoba, ?-9-1939, M. J. Viana (MNHN, 1; WOPC, 1); idem, La Criolla, ?-I-1903, 1,500 m. G. A. Baer (MNHN, 1).

D i a g n o s i s : Antennae testaceous; prothorax bicolorous; pronotum mostly black, partly testaceous; pterothorax testaceous; elytra base slightly testaceous, rest of elytra black, but elytra with three yellow markings; elytral apex setose; legs testaceous.

D e s c r i p t i o n : Size: Length 7.0 mm; width 1.0 mm. Form: As in Fig. 58. Head. (EW/FW 20/60). Thorax: Subapical depression well defined; pronotal and elytral discs finely punctate; (PL/PW-110/110); (EL/EW 270/75). Abdomen: Aedeagus (Fig. 107).

V a r i a t i o n : Length 5.0-7.0 mm; width 1.0-1.2 mm. The pronotum may entirely testaceous.

E t y m o l o g y : The species name, *tucuman*, constitutes a noun in apposition and refers to the type locality.

***Enoclerus velha* OPITZ nov.sp.** (Fig. 59)

T y p e m a t e r i a l : Holotype: ♀. Type locality: Brazil, Vila Velha, Paraná, 12-I-1969, L. & C. W., O'Brien (WOPC).

D i a g n o s i s : Antennae and legs testaceous; cranium black; pronotal proper red, pronotal arch black; elytra with three yellow markings; elytral apex setose, elytra particularly roughly sculptured.

D e s c r i p t i o n : Size: Length 5.0 mm; width 1.0 mm. Form: As in Fig. 59. Head. (EW/FW 20/45). Thorax: Subapical depression well defined (PL/PW-110/110); (EL/EW 190/60). Abdomen: Female pygidium scutiform.

V a r i a t i o n : Length 5.0-7.0 mm; width 1.0-1.2 mm. The pronotum may entirely testaceous.

E t y m o l o g y : The species name, *velha*, constitutes a noun in apposition and refers to the type locality.

***Enoclerus vera* OPITZ nov.sp.** (Fig. 60)

T y p e m a t e r i a l : Holotype: ♂. Type locality: Brazil, Vila Vera, Mato Grosso, X-1973, M. Alvarenga (WOPC).

D i a g n o s i s : Antennae, legs, and thoracic venter testaceous; cranium black; pronotal arch black; pronotal proper mostly testaceous, slightly infuscated; elytral basal 1/2

testaceous, elytra with lunulate fascia and with large black marling, elytral apex testaceous and highly setose.

Description: Size: Length 5.5 mm; width 1.0 mm. Form: As in Fig. 60. Head: (EW/FW 20/55). Thorax: Subapical depression well defined (PL/PW-110/110); (EL/EW 240/65). Abdomen: Aedeagus lost.

Etymology: The species name, *vera*, constitutes a noun in apposition and refers to the type locality.

***Enoclerus vista* OPITZ nov.sp.** (Figs 61, 108)

Type material: Holotype: ♂. Type locality: Bolivia, Santa Cruz Dept., Ichilo Prov., Hotel Flora & Fauna, 4-6 km SSE Buena Vista, 17°29.95'S 63°33.15'W, 400-500 m, 3-14- November 2003, S. W. Lingafelter, beating (FSCA). Paratype: 1 specimen. BOLIVIA: Departamento de Santa Cruz; Buena Vista, F & F Hotel, 14-17-XI-2003, Morris, Nearn, Wappes (RFMC, 1).

Diagnosis: Mostly black; each elytron with yellow ornate markings.

Description: Size: Length 6.0 mm; width 1.0 mm. Form: As in Fig. 61. Head: (EW/FW 20/40). Thorax. Pronotal and elytral discs finely punctate; (PL/PW 85/85); (EL/EW 230/50). Abdomen: Aedeagus (Fig. 108).

Etymology: The species name, *vista*, constitutes a noun in apposition and refers to the type locality.

***Enoclerus wappesi* OPITZ nov.sp.** (Figs 62, 109)

Type material: Holotype: ♀. Type locality: Bolivia, Santa Cruz, 4-6 k SSE Buena Vista, F & F Hotel, 27-29 Oct 2000, Wappes & Morris (FSCA). Paratypes: 10 specimens. BOLIVIA: Departamento de Santa Cruz; 4-6 k SSE Buena Vista, F & F Hotel, 11-12-V-2004, Wappes & Cline (ACMT, 1); Santa Cruz; 3-7 km SSE Buena Vista, Hotel Flora & Fauna, 430 m, 14-28-X-2002, B. K. Dozier (FSCA, 1); Santa Cruz; Porterillos del Guenda, 40 km NW Santa Cruz de la Sierra, 12-18/X/2014, Morris & Wappes (RFMC, 1); Santa Cruz; Est. Esperimetal Gral. Saavedra, VIII-1973, L. Stange, C. Porter (FSCA, 1). Departamento de Beni; Rio Itenez at mouth of Rio Baures, X-9-1964, J. K. Bouseman, Collector (AMNH, 1). BRAZIL: Estado do Rondonia; Vilhena, XI-1973, M. Alvarenga (WOPC, 1). PARAGUAY: Departamento de Central; Luque, 2.1956 (WFBM, 2); Departamento de Canindeyú; Mbaracayu Reserve, 165 m, 1-5-XII-2017, J. B. Heppner, Malaise trap (FSCA, 1). ARGENTINA: Provincia de Misiones; Iguazú, 30-I-13-III-1945, Hayward, Willink, & Golbach (WOPC, 1).

Diagnosis: Antenna, cranium, prothorax, legs, and abdomen black; pterothorax red; pronotum with band of white setae; elytral base 1/3 red, also with pale fascia and narrow line, rest of elytra black, elytral apex setose.

Description: Size: Length 6.0 mm; width 1.0 mm. Form: As in Fig. 62. Head: (EW/FW 20/60). Thorax: Elytral disc roughly punctate; (PL/PW 110/110); (EL/EW 250/50). Abdomen: Aedeagus (Fig. 109).

Etymology: The species name, *wappesi*, constitutes a noun in apposition and honors James E. Wappes.

***Enoclerus yasuni* OPITZ nov.sp.** (Fig. 63)

Type material: Holotype: ♀. Type locality: Ecuador, Napo, Yasuni, Ser, Sta., 19-30 Oct 1998, W. J. Hanson, 250 m (WOPC).

D i a g n o s i s : Antenna yellow; cranium mostly castaneous, with small black spot; pronotum mostly yellow, with small black spot; elytra broadly black in basal 1/3, with then with black macula, elytra red in remainder; legs brown.

D e s c r i p t i o n : Size: Length 7.0 mm; width 1.5 mm. Form: As in Fig. 63. Head: (EW/FW 22/50). Thorax: Subapical depression well defined; pronotal and elytral discs finely punctate (PL/PW-110/110); (EL/EW 290/50). Abdomen: Female pygidium scutiform.

E t y m o l o g y : The species name, *yasuni*, constitutes a noun in apposition and refers to the type locality.

***Enoclerus yungas* OPITZ nov.sp.** (Figs 64, 110)

T y p e m a t e r i a l : Holotype: ♂. Type locality: Bolivia, Dpto. La Paz, Prov. Nor Yungas, Rio San Lorenzo, 15.793°S, 67.513°W, elev, 730 m, 23-IV-2007, S. M. Clark (WOPC). Paratypes: 2 specimens. BOLIVIA: Departamento de La Paz, Nor Yungas, Rio San Lorenzo, 15.793°S, 67.513°W, elev, 730 m, 23-IV-2007, S. M. Clark (WOPC, 1); Departamento de Cochabamba; Villa Tunari, Hotel el Puente, 1,158 feet, 10-12-IX-2012, Wappes, Skelley, Bonaso, Hamel, at light (ACMT, 1).

D i a g n o s i s : Antenna bicolorous; cranium red; pronotum part black and part red; elytra mostly black, each elytron with three linear fasciae.

D e s c r i p t i o n : Size: Length 6.0 mm; width 1.8 mm. Form: As in Fig. 64. Head: (EW/FW 20/60). Thorax: Pronotal and elytral discs finely punctate; (PL/PW 95/95); (EL/EW 220/65). Abdomen: Aedeagus (Fig. 110).

E t y m o l o g y : The species name, *yungas*, constitutes a noun in apposition and refers to the type locality.

Acknowledgments

My thanks the curators listed in the "Repositories of specimens" section for entrusting me with specimens in their charge. The very thorough review of Robert H. Turnbow, Jr. is much appreciated. My wife Galena provided much support in the preparation of the Montage and Leica images. My thanks to Paul E. Skelley for numerous departmental courtesies, and to the Florida Department of Agriculture, DPI, for institutional affiliation and support.

Zusammenfassung

64 neue Cleridae-Arten werden beschrieben: *Enoclerus aspera* nov.sp., *E. bahia* nov.sp., *E. bolivar* nov.sp., *E. campbelli* nov.sp., *E. capillus* nov.sp., *E. caraca* nov.sp., *E. cauca* nov.sp., *E. ceara* nov.sp., *E. cedro* nov.sp., *E. chagra* nov.sp., *E. cinctus* nov.sp., *E. colorados* nov.sp., *E. corcovado* nov.sp., *E. cosnipata* nov.sp., *E. condinamarca* nov.sp., *E. cura* nov.sp., *E. cusco* nov.sp., *E. farragoinis* nov.sp., *E. fascia* nov.sp., *E. fauna* nov.sp., *E. fractus* nov.sp., *E. gibboclerus* nov.sp., *E. gorgona* nov.sp., *E. grenade* nov.sp., *E. guiana* nov.sp., *E. huallaga* nov.sp., *E. huila* nov.sp., *E. itajura* nov.sp., *E. junin* nov.sp., *E. kaw* nov.sp., *E. larioja* nov.sp., *E. loreto* nov.sp., *E. losvolvanes* nov.sp., *E. luridus* nov.sp., *E. maldonado* nov.sp., *E. mata* nov.sp., *E. matamata* nov.sp., *E. meta* nov.sp., *E. monteverde* nov.sp., *E. morrissi* nov.sp., *E. napo* nov.sp., *E. nova* nov.sp., *E. ordinis* nov.sp., *E. para* nov.sp., *E. paula* nov.sp., *E. pedraazul* nov.sp., *E. pictilis* nov.sp., *E. pictus* nov.sp.,

E. octavus nov.sp., *E. rio* nov.sp., *E. riocuare* nov.sp., *E. rionegro* nov.sp., *E. rondonia* nov.sp., *E. rubidus* nov.sp., *E. rubra* nov.sp., *E. sinop* nov.sp., *E. teutonia* nov.sp., *E. tucuman* nov.sp., *E. velha* nov.sp., *E. vera* nov.sp., *E. vista* nov.sp., *E. wappesi* nov.sp., *E. yasuni* nov.sp. und *E. yungas* nov.sp.

References

- ARNETT R.H. JR., SAMUELSON G.A. & G.A. NISHIDA (1993): The insect and spider collections of the world (second edition). — Flora and fauna handbook no. 11. Sandhill Crane Press, Gainesville, FL. 310 pp.
- BARR W.F. (1976): Descriptions of *Enoclerus* and some allied genera (Coleoptera: Cleridae). — *Melandria* 24: 17-33.
- BARR W.F. (1978): New species of *Enoclerus* from Mexico, Central America, and Venezuela (Coleoptera: Cleridae). — *The Coleopterists Bulletin* 32(4): 269-278.
- BARR W.F. & J. RIFKIND, (2009): Two new and one resurrected species of *Enoclerus* Gahan (Coleoptera: Cleridae; Clerinae) from the western United States. — *Zootaxa* 216: 8: 57-62.
- BORROR D.J. (1960): Dictionary of word roots and combining forms. — Mayfield Publishing Company, California. 134 pp.
- BROWN R. W. (1956): Composition of scientific words. 2nd ed. — Reese Press, Baltimore, Maryland. 882 pp.
- BURKE A. & C. CHABOO (2015): Beetles (Coleoptera) of Peru: A survey of the families. Cleridae Latreille, 1802. — *Journal of the Kansas Entomological Society* 88(2): 260-266.
- DE QUEIROZ K. (2007): Species concepts and species delimitation. — *Systematic Biology* 56(6): 879-886.
- DOBZHANSKY T. (1937): Genetics and the origin of species. — Columbia University Press, New York, NY. 364 pp.
- EKIS G. (now OPITZ W.) (1976): Neotropical clerid beetles of the genus *Enoclerus* (Coleoptera: Cleridae: Clerinae). — *Studies on Neotropical Fauna and Environment* 11: 151-172.
- MAYR E. (1963): Animal species and evolution. — Harvard University Press, Cambridge, Massachusetts. 797 pp.
- OPITZ W. (2010): Classification, evolution, and subfamily composition of the Cleridae, and generic content and key of the subfamilies (Coleoptera: Cleroidea). — *Entomologica Basiliensia et Collectionis Frey* 32: 31-128.
- RIFKIND J. (1994): New species of Mexican *Enoclerus* Gahan (Coleoptera: Cleridae). — *The Coleopterists Bulletin* 48(3): 283-292.
- RIFKIND J. (1996a): New species of ant-like *Enoclerus* from Mexico (Coleoptera: Cleridae). — *Entomological Problems* 27(1): 65-73.
- RIFKIND J. (1996b): A new genus and species of checkered beetle from Honduras with additions to the Honduran fauna (Coleoptera: Cleridae). — *Natural History Museum of Los Angeles County Contributions in Science* No. 461: 1-10.
- RIFKIND J. (2002): New Central American and Mexican *Enoclerus* (Coleoptera: Cleridae). — *Natural History Museum of Los Angeles Contributions in Science* No. 487: 1-16.
- RIFKIND J. (2012): New Central American and Mexican *Enoclerus* Gahan (Coleoptera: Cleridae: Clerinae): Part II. — *Zootaxa* 3397: 1-27.
- STANDFUSS M. (1896): Handbuch der paläarktischen Gross-Schmetterlinge für Forscher und Sammler. — Gustav Fischer, Jena, Germany. 392 pp.

Autor's address:

Weston OPITZ
Research Associate, Florida State Collection of Arthropods,
Division of Plant Industry/Entomology,
Florida Department of Agriculture and Consumer Services,
1911 SW 34th Street, Gainesville, FL 32608-7100, USA
E-mail: Weston.Opitz@fdacs.gov



1



2



3



4

Figs 1-4. Habitus. *Enoclerus aspera* (1); *E. bahia* (2); *E. bolivar* (3); *E. campbelli* (4).



5



6



7



8

Figs 5-8. Habitus. *Enoclerus capillus* (5); *E. caraca* (6); *E. cauca* (7); *E. ceara* (8).



9



10



11



12

Figs 9-12. Habitus. *Enoclerus cedro* (9); *E. chagra* (10); *E. cinctus* (11); *E. colorados* (12).



13



14



15



16

Figs 13-16. Habitus. *Enoclerus corcovado* (13); *E. cosnipata* (14); *E. cundinamarca* (15); *E. cura* (16).



17



18



19



20

Figs 17-20. Habitus. *Enoclerus cusco* (17); *E. farragoinis* (18); *E. fascia* (19); *E. fauna* (20).



21



22



23



24

Figs 21-24. Habitus. *Enoclerus fractus* (21); *E. gibboclerus* (22); *E. gorgona* (23); *E. grenade* (24).



25



26



27



28

Figs 25-28. Habitus. *Enoclerus guiana* (25); *E. huallaga* (26); *E. huila* (27); *E. itajura* (28).



29



30



31



32

Figs 29-32. Habitus. *Enoclerus junin* (29); *E. kaw* (30); *E. larioja* (31); *E. loreto* (32).



33



34



35



36

Figs 33-36. Habitus. *Enoclerus losvolcanes* (33); *E. luridus* (34); *E. maldonado* (35); *E. matamata* (36).



37



38



39



40

Figs 37-40. Habitus. *Enoclerus mata* (37); *E. meta* (38); *E. monteverde* (39); *E. morrisoni* (40).



41



42



43



44

Figs 41-44. Habitus. *Enoclerus napo* (41); *E. nova* (42); *E. octavus* (43); *E. ordinis* (44).



45



46



47



48

Figs 45-48. Habitus. *Enoclerus para* (45); *E. paula* (46); *E. pedraazul* (47); *E. pictilis* (48).



49



50



51



52

Figs 49-52. Habitus. *Enoclerus pictus* (49); *E. rioquaire* (50); *E. rio* (51); *E. rionegro* (52).



53



54



55



56

Figs 53-56. Habitus. *Enoclerus rondonia* (53); *E. rubidus* (54); *E. rubra* (55); *E. sinop* (56).



57



58



59



60

Figs 57-60. Habitus. *Enoclerus teutonia* (57); *E. tucuman* (58); *E. velha* (59); *E. vera* (60).



61



62



63

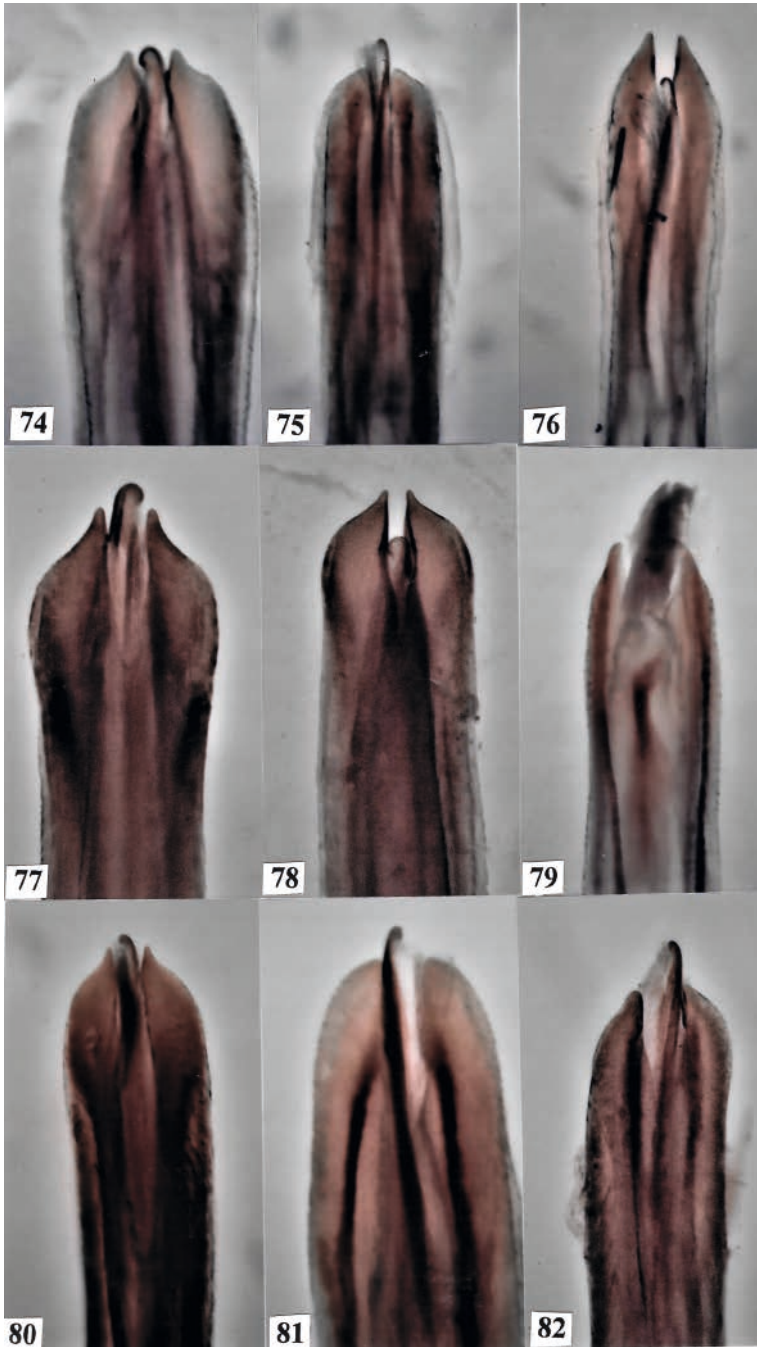


64

Figs 61-64. Habitus. *Enoclerus vista* (61); *E. wappesi* (62); *E. yasuni* (63); *E. yungas* (64).



Figs 65-73. Aedeagus. *Enoclerus aspera* (65); *E. bolivar* (66); *E. cauca* (67); *E. ceara* (68); *E. cedro* (69); *E. chagra* (70); *E. cinctus* (71); *E. colorados* (72); *E. pictus* (73).



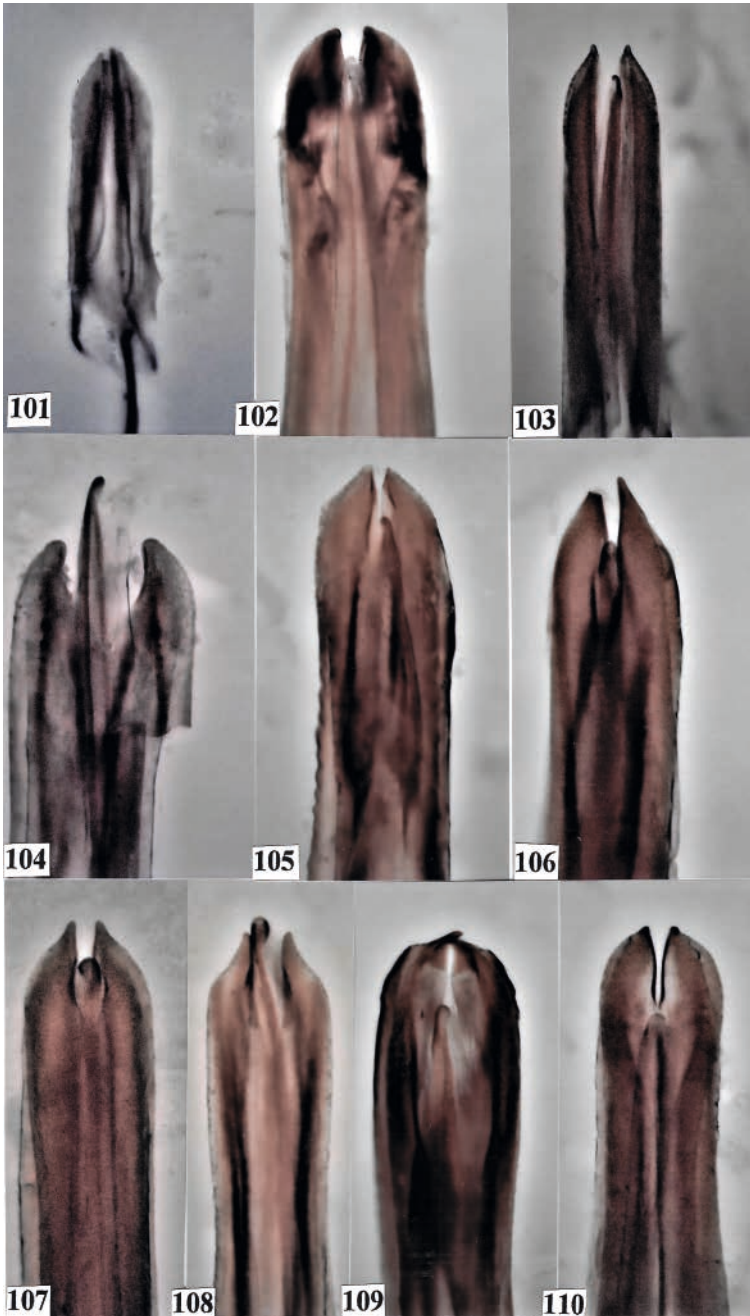
Figs 74-82. Aedeagus. *Enoclerus cundinamarca* (74); *E. farragonis* (75); *E. fauna* (76); *E. fascia* (77); *E. fractus* (78); *E. gibboclerus* (79); *E. gorgona* (80); *E. grenade* (81); *E. huallaga* (82).



Figs 83-91. Aedeagus. *Enoclerus huila* (83); *E. itajura* (84); *E. junin* (85); *E. kaw* (86); *E. larioja* (87); *E. losvolcanes* (88); *E. luridus* (89); *E. maldonado* (90); *E. matamata* (91).



Figs 92-100. Aedeagus. *Enoclerus morrisi* (92); *E. napo* (93); *E. nova* (94); *E. octavus* (95); *E. ordinis* (96); *E. para* (97); *E. paula* (98); *E. pedraazul* (99); *E. pictilis* (100).



Figs 101-110. Aedeagus. *Enoclerus rio* (101); *E. riocuare* (102); *E. rionegro* (103); *E. rondonia* (104); *E. sinop* (105); *E. teutonia* (106); *E. tucuman* (107); *E. vista* (108); *E. wappesi* (109); *E. yungas* (110).

ZOBODAT - www.zobodat.at

Zoologisch-Botanische Datenbank/Zoological-Botanical Database

Digitale Literatur/Digital Literature

Zeitschrift/Journal: [Linzer biologische Beiträge](#)

Jahr/Year: 2021

Band/Volume: [0053_1](#)

Autor(en)/Author(s): Opitz Weston

Artikel/Article: [New South American checkered beetles of the genus *Enoclerus* \(Coleoptera, Cleridae, Clerinae\) 123-169](#)