

Linzer biol. Beitr.	53/1	497-501	August 2021
---------------------	------	---------	-------------

***Cryptorhopalum schneppi* nov.sp., a new species from Florida (Coleoptera, Dermestidae, Megatominae)**

Jiří HÁVA

A b s t r a c t : *Cryptorhopalum schneppi* nov.sp. from Florida (U.S.A.) (Coleoptera, Dermestidae) is described, illustrated and compared with similar species.

K e y w o r d s : Taxonomy, new species, description, Coleoptera, Dermestidae, *Cryptorhopalum*, U.S.A., Florida.

Introduction

The genus *Cryptorhopalum* GUÉRIN-MÉNEVILLE, 1838 currently contains 166 species distributed in the Holarctic and Neotropical Regions (HÁVA 2015a,b, 2018), and 25 species are known from the United States (BEAL 1985, 1995, HÁVA 2015a). A new species recently collected in Florida is described and compared with similar species here.

Material and methods

The type material is deposited in the FSCA - Florida State Collection and Arthropods, Gainesville, Florida, U.S.A.

The habitus photograph was made by a digital camera Olympus DP 72 on stereo binocular microscope Olympus SZX 16 using the programme Quick Photo Camera 2.3 and Deep Focus 3.0 for the modification of the pictures.

The nomenclature and zoogeography follow the catalogue of HÁVA (2015a).

The following abbreviations of measurements were used:

total length (TL).....linear distance from anterior margin of pronotum to apex of elytra.

elytral width (EW).....maximum linear transverse distance.

The type specimens were labelled with a red printed label bearing the text as follows: "HOLOTYPE *Cryptorhopalum schneppi* sp. nov. Jiří Háva det. 2021".

Systematic

Family D e r m e s t i d a e

Subfamily M e g a t o m i n a e

Tribe Megatomiini

Cryptorhopalum schneppi nov.sp. (Figs 1-4)

Type material: Holotype (♀) labelled: "Florida: Pinellas Co., Ft. De Soto, May 8, 2016, beaten from brown/dead Sabal palmetto frond, Kyle E. Schnepf lgt.", (FSCA).

Description: Female measurements (in mm): TL 2.9, EW 1.7. Dorsal integument orange-brown and black (Fig. 1), setation decumbent, yellow, grey and brown. Ventral integument brown (Fig. 2), setation decumbent, grey. Head shiny brown and finely punctated, covered with intermixed yellow and grey decumbent setation. Palpi light brown. Median frontal ocellus present. Eyes large with hardly visible short microseta. Antennae brown, with yellow setation, consisting of 11 antennomeres, antennal club with 3 antennomeres (Fig. 4). Antennal fossa closed. Pronotum integument orange-brown with black spots and long, intermixed yellow and grey setation (Fig. 3). Elytral integument in anterior 1/2 orange-brown with intermixed brown and yellow setae, and transverse narrow fascia from grey setation, apical part black with brown and yellow individual setae, much more densely and finely punctated as the pronotum. Scutellum orange-brown, small, triangular and without punctation and setation. Epipleuron short, dark brown, with some yellow decumbent setation. Metasternum coarsely punctate with grey decumbent pubescence. Abdominal visible ventrites shiny, brown, densely and coarsely punctated, with grey decumbent setation. Legs: tarsi light brown, tibiae brown, femora brown, sparsely covered with very short and fine decumbent, intermixed grey and yellow setae.

Male: Unknown.

Differential diagnosis: The new species belongs to the *C. quadripunctatum* species group. The new species differs by the characters mentioned in the following key.

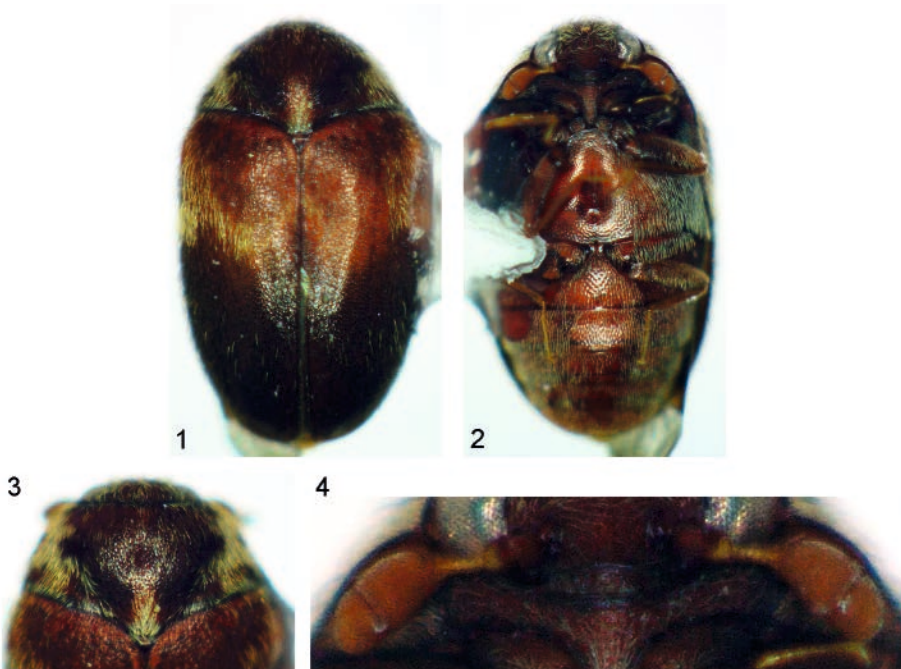
Revised key to adult females of the *C. quadripunctatum* species group

(Keys to the U.S. fauna modified from BEAL 1985, 1995)

- 1 Impressed or glabrous maculae apparently absent on 5th visible abdominal sternum.....
.....*C. aspilon* BEAL, 1985 and *C. distichia* BEAL, 1985
- Maculae present on 5th visible abdominal sternum (may be large and glabrous, covered with setae and marked by fine carina around margin or small, shallow, somewhat pit-like).....2
- 2 Maculae of 5th visible abdominal sternum without well-defined margins, glabrous except for an occasional seta or two, and with diameter larger than 1/2 length of segment at midline. Pronotum with dark brown setae on disc.....3
- Maculae of 5th visible abdominal sternum with at least well-defined anterior margin formed either by fine, slightly raised carina or by macula being somewhat depressed. Pronotum with or without dark brown setae on disc5
- 3 Integument of elytra uniformly dark brown to black. Antennal club dark brown to black....
..... *C. poorei* BEAL, 1975
- Elytral integument bicolorous4
- 4 Integument of apical 1/4-1/3 of elytra light reddish or light yellowish-brown; pronotum and base of elytra chocolate brown to black. Antennal club reddish brown to light brick red *C. haemorrhoidale* (LECONTE, 1824)

- Integument of anterior 1/2 orange-brown with intermixed brown and yellow setae, and transverse narrow fascia from grey setation, apical part black with brown and yellow individual setae..... *C. schneppi* **nov.sp.**
- 5 Diameter of maculae of 5th visible abdominal sternum 1/3-1/2 visible length of sternum at midline.....6
- Diameter of maculae of 5th visible abdominal sternum 2/10-3/10 visible length of sternum at midline.....10
- 6 All setae of pronotum golden to golden white.....7
- Setae of pronotal lobe and often many setae of disc white or very pale golden white.....8
- 7 Light-colored setation of elytron light golden. Integument of pronotum usually appreciably darker in color than integument of elytra at base..... *C. balteatum* LECONTE, 1854
- Light-colored setation of elytron golden white. Color of integument of pronotum and base of elytra usually identical *C. filitarse* CASEY, 1900
- 8 Abdominal sternum 8 forms a long, slender, sclerotized, gradually-tapering, medially directed apodeme with small setae along the margins and a single, large seta at the apex *C. anthrenoides* CASEY, 1916
- Abdominal sternum 8 not forms a long, slender, sclerotized, gradually-tapering9
- 9 White or light golden white setae present in at least narrow row along entire basal margin of pronotum on either side of lobe; pronotum often covered with mostly white and golden white setae. Elytra almost always with some scattered whitish setae between submedian and subapical bands, particularly near median suture *C. reversum* CASEY, 1900
- Small or large area of basal margin of pronotum on either side of lobe almost always with golden brown setae; pronotum usually with large area of golden brown setae on disc. Elytra without whitish setae between submedian and subapical bands..... *C. pruddeni* CASEY, 1900
- 10 Pronotum with all white and golden or golden-white setae; disc without dark brown or golden brown setae.....*C. sapindi* BEAL, 1985
- Pronotum with dark brown or golden brown setae on disc and on basal margin on either side of lobe11
- 11 Abdominal visible sternum 5 with a distinct, surrounding, thread-like carina *C. woolfi* BEAL, 1985
- Abdominal visible sternum 5 with large maculae and without a distinct, surrounding, thread-like carina.....*C. brooksi* BEAL, 1995

E t y m o l o g y . Patronymic, dedicated to collector of the new species, Kyle E. Schnepf (Gainesville, Florida, USA).



Figs. 1-4: *Cryptorhopalum schneppi* nov.sp. (holotype) ♀: (1) habitus dorsal aspect; (2) habitus ventral aspect; (3) pronotum; (4) antennae.

Acknowledgements

I am very indebted to Kyle E. Schnepf (Gainesville, Florida, USA) for the revision of the English text of the manuscript. The paper was supported by the Ministry of Agriculture of the Czech Republic, institutional support MZE-RO0118.

Zusammenfassung

Cryptorhopalum schneppi nov.sp. von Florida (U.S.A.) (Coleoptera, Dermestidae) wird neu für die Wissenschaft beschrieben, bildlich dargestellt und mit ähnlichen Arten verglichen.

References

- BEAL R.S. (1985): A taxonomic revision of the Nearctic species of *Cryptorhopalum* (Dermestidae: Coleoptera). — Transactions of the American Entomological Society **111**: 171-221.
- BEAL R.S. (1995): Taxonomic notes and distributional data on Nearctic species of *Cryptorhopalum* (Coleoptera: Dermestidae) with description of a new Southwestern U. S. species. — Entomological News **106**: 169-177.
- HÁVA J. (2015a): World Catalogue of Insects. Volume 13. Dermestidae (Coleoptera). Leiden/Boston: Brill, xxvi + 419 pp.

- HÁVA J. (2015b): Contribution to the knowledge of *Cryptorhopalum equisolae* species group, with description of *Cryptorhopalum occultum* sp. nov. from Argentina (Coleoptera: Dermestidae: Megatominae). — *Arquivos Entomológicos* **13**: 257-260.
- HÁVA J. (2018): Contribution to the knowledge of Dermestidae (Coleoptera) deposited in Museum National d' Histoire Naturelle, Paris, France. — *Studies and Reports, Taxonomical Series* **14**(1): 31-68.

Author's address:

Jiří HÁVA
Forestry and Game Management Research Institute,
Strnady 136, CZ-252 02 Praha 5 – Zbraslav, Czech Republic
E-mail: jh.dermestidae@volny.cz

ZOBODAT - www.zobodat.at

Zoologisch-Botanische Datenbank/Zoological-Botanical Database

Digitale Literatur/Digital Literature

Zeitschrift/Journal: [Linzer biologische Beiträge](#)

Jahr/Year: 2021

Band/Volume: [0053_1](#)

Autor(en)/Author(s): Hava (Háva) Jiri

Artikel/Article: [Cryptorhopalum schneppi nov.sp., a new species from Florida \(Coleoptera, Dermestidae, Megatominae\) 497-501](#)