

SL
8545
S461
1906
SCHREIB

Die
Groß-Schmetterlinge
der Erde

— Eine systematische Bearbeitung —
der bis jetzt bekannten Großschmetterlinge

In Verbindung mit namhaftesten Fachmännern herausgegeben
von

— Dr. Adalbert Seitz —

Direktor des zoologischen Gartens zu Frankfurt a. M.; correspondierendes,
arbeitendes und ordentliches Mitglied vieler wissenschaftlicher Gesellschaften



STUTTGART
FRITZ LEHMANN VERLAG
1906

922
545
9221
11-16
22-183

Alle Rechte vorbehalten.

PAPILIO

a



aeacus ♀

b



aeacus ♂



ravana ♂



ravana ♀

c



neville



loochooanus (U)

PAPILIO

a



lama

alcinous ♂

alcinous ♀

b



alcinous ♂ (aest.)

alcinous ♀

mencius ♂

mencius ♀

c



plutonium ♂ (U.)

plutonium ♀

confusus ♂

confusus ♀

PAPILIO

a

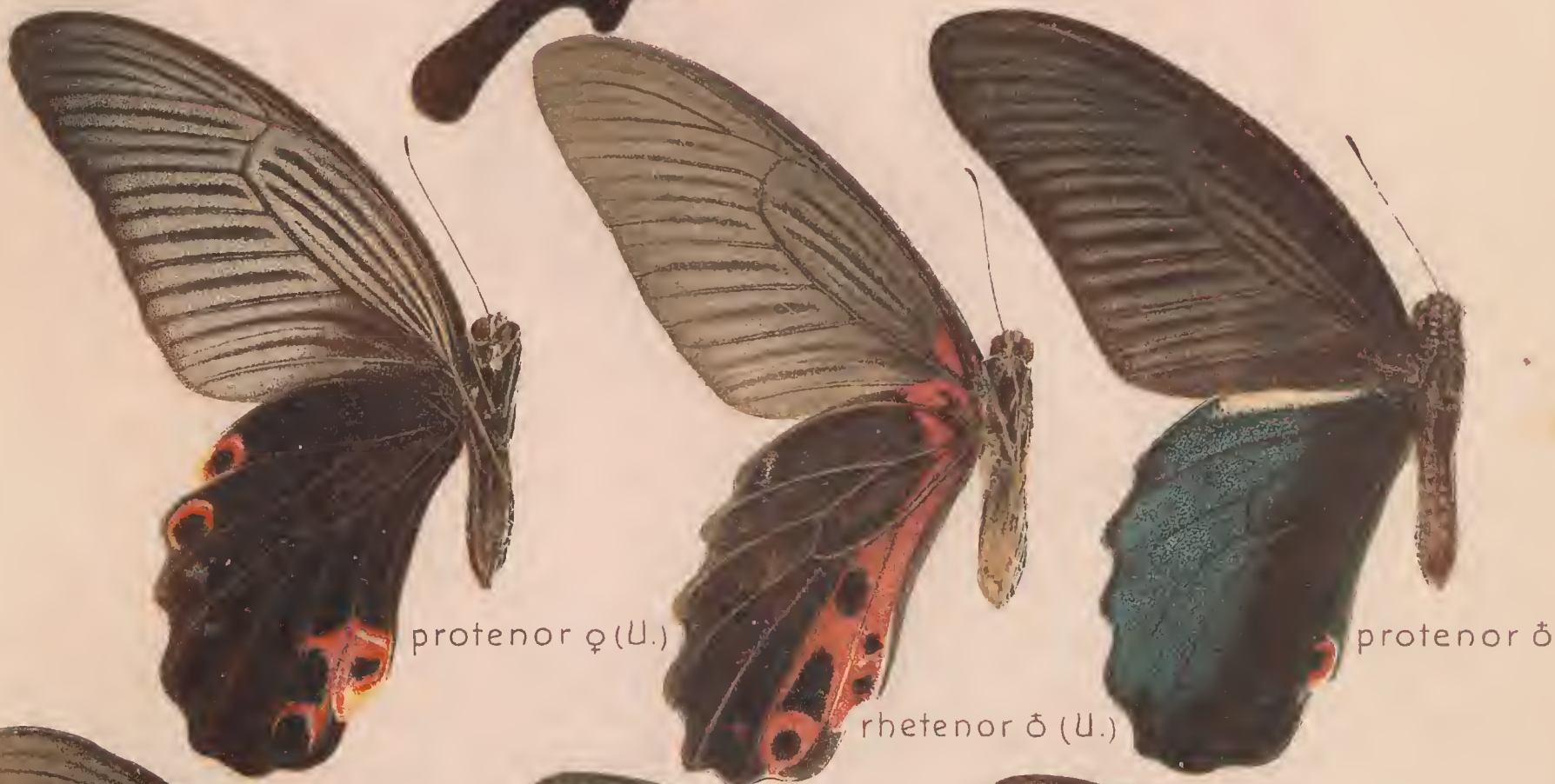


dealbatus (U.)

impediens

nigricans (U.)

b

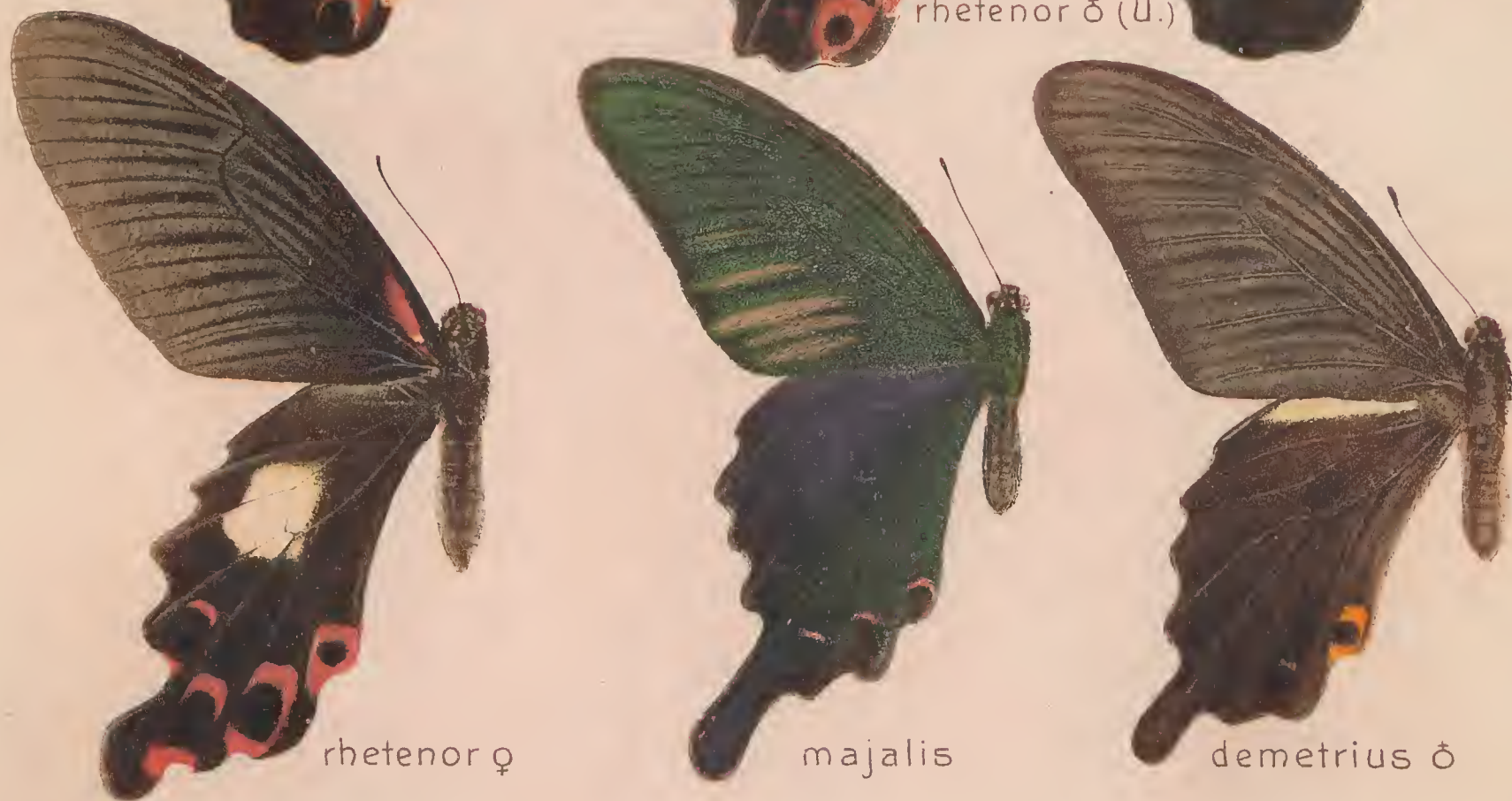


profenor ♀ (U.)

rhetenor ♂ (U.)

profenor ♂

c



rhetenor ♀

majalis

demetrius ♂

PAPILIO



PAPILIO



PAPILIO



xuthulus

hospiton

xuthus

asiaticus

Kantschadalus

hippocrates

montanus

machaon

ladakensis

britannicus

O. sphyrus Hbn. U.

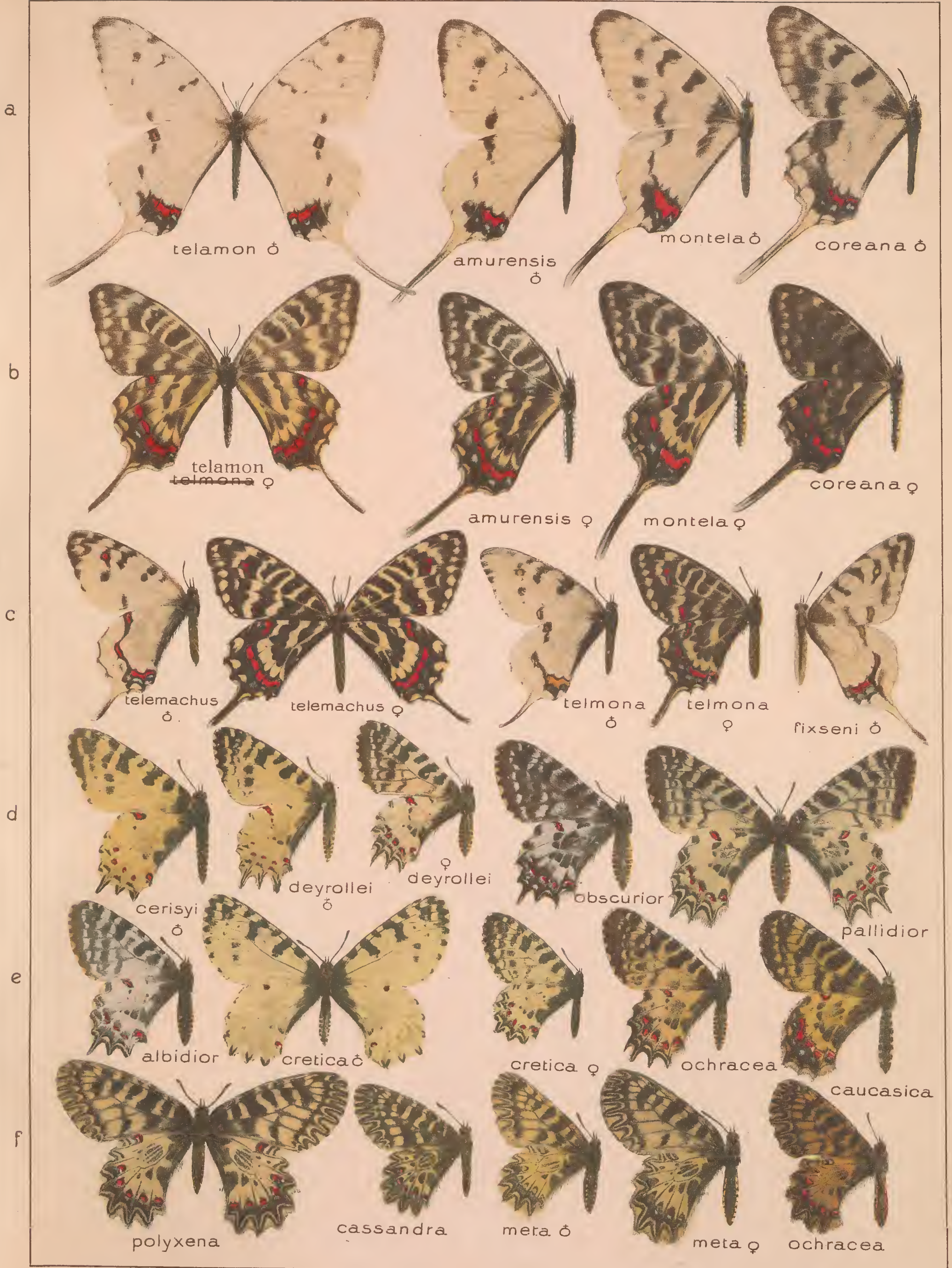
demoleus

PAPILIO



PAPILO - LUEHDORFIA - ARMANDIA

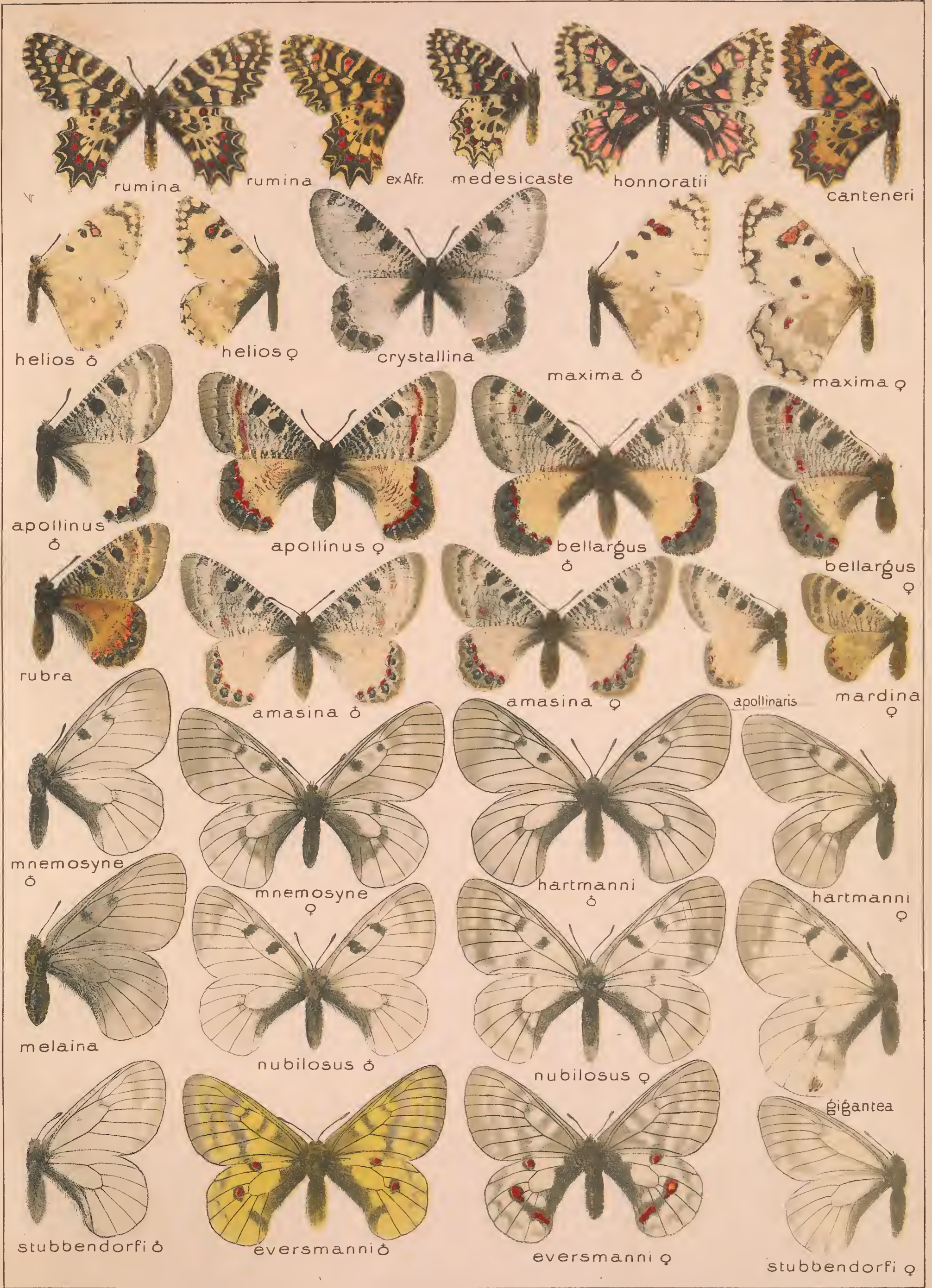




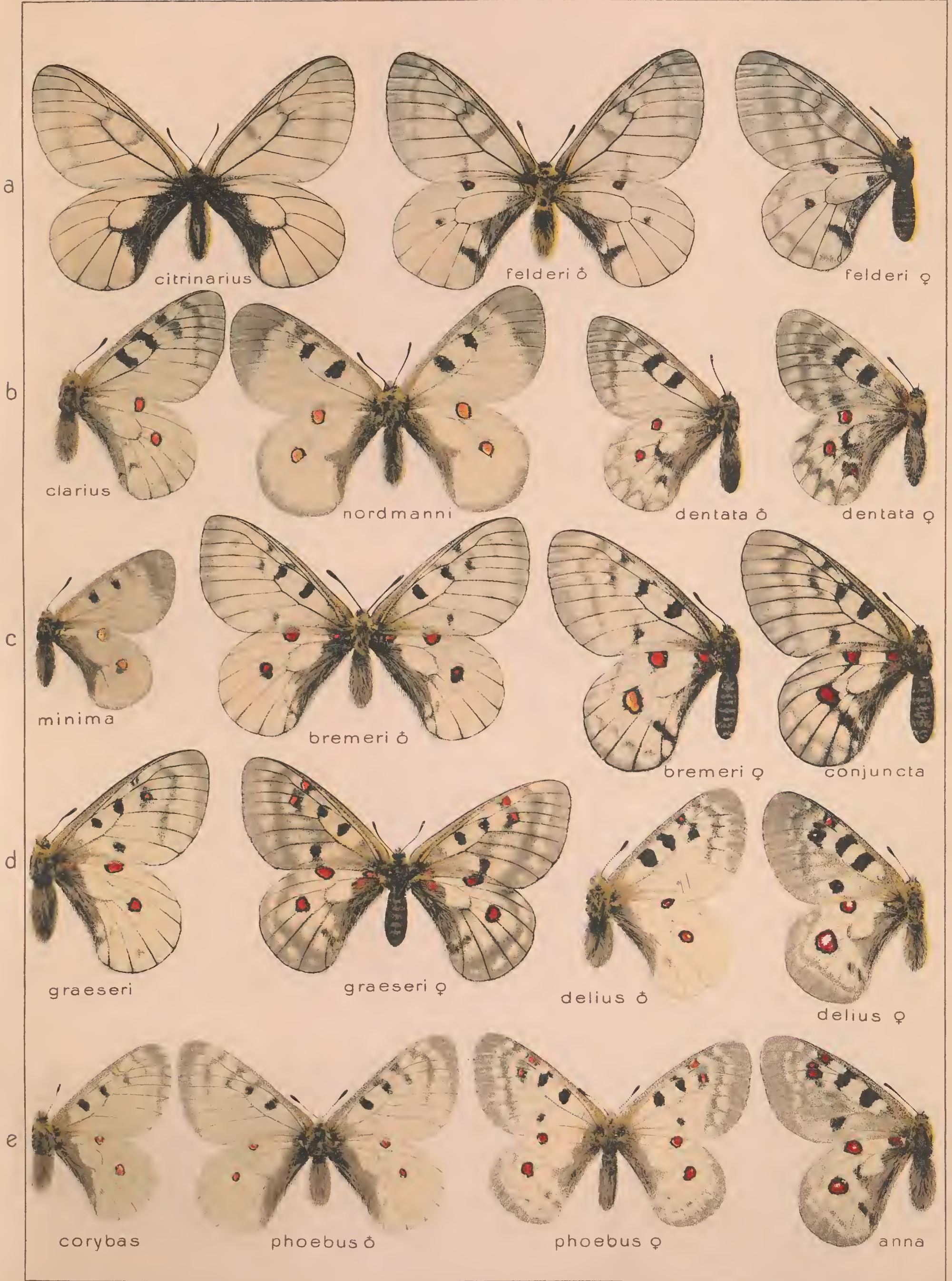
THAIS - DORITIS - PARNASSIUS.

I.

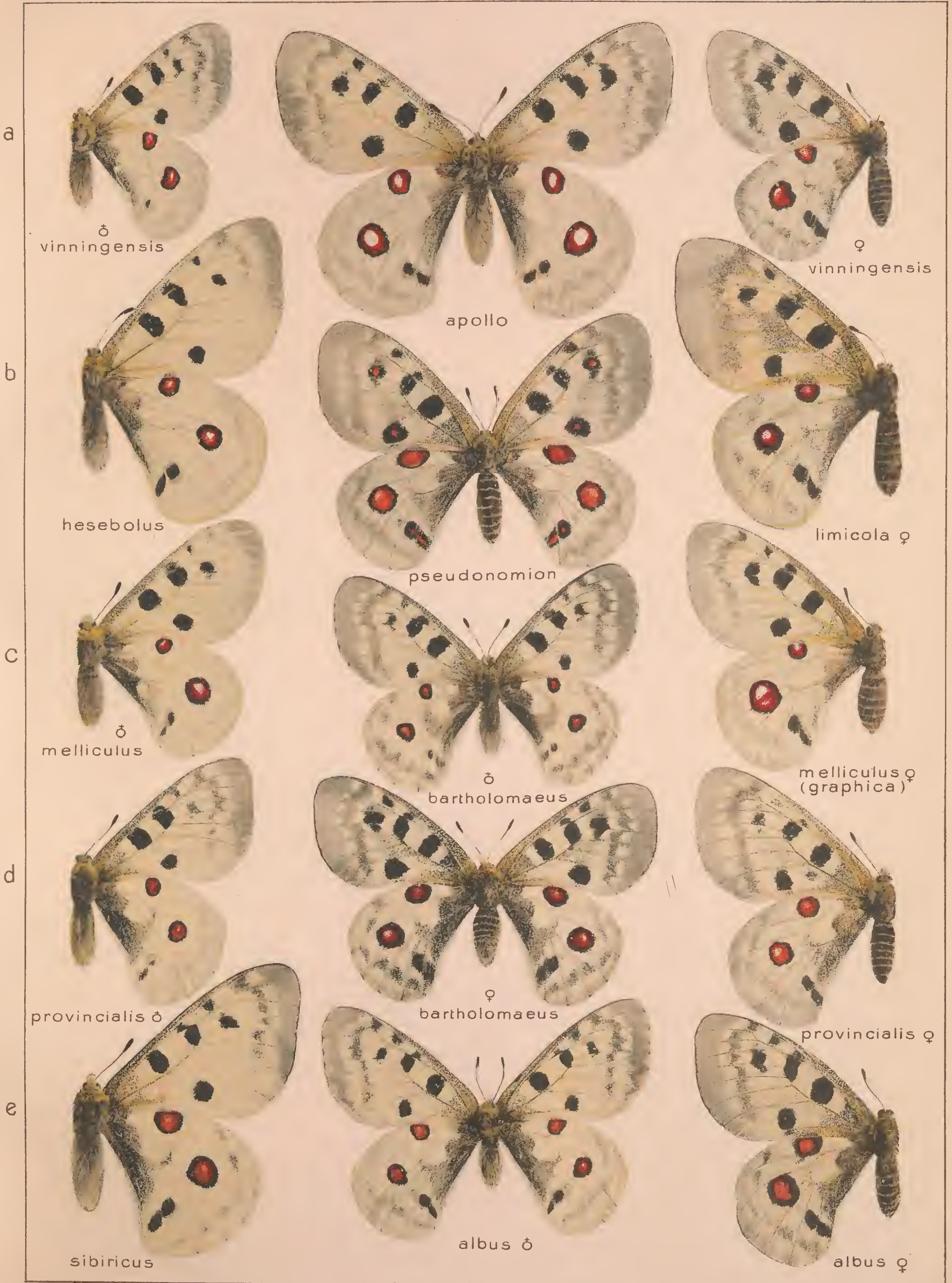
10.



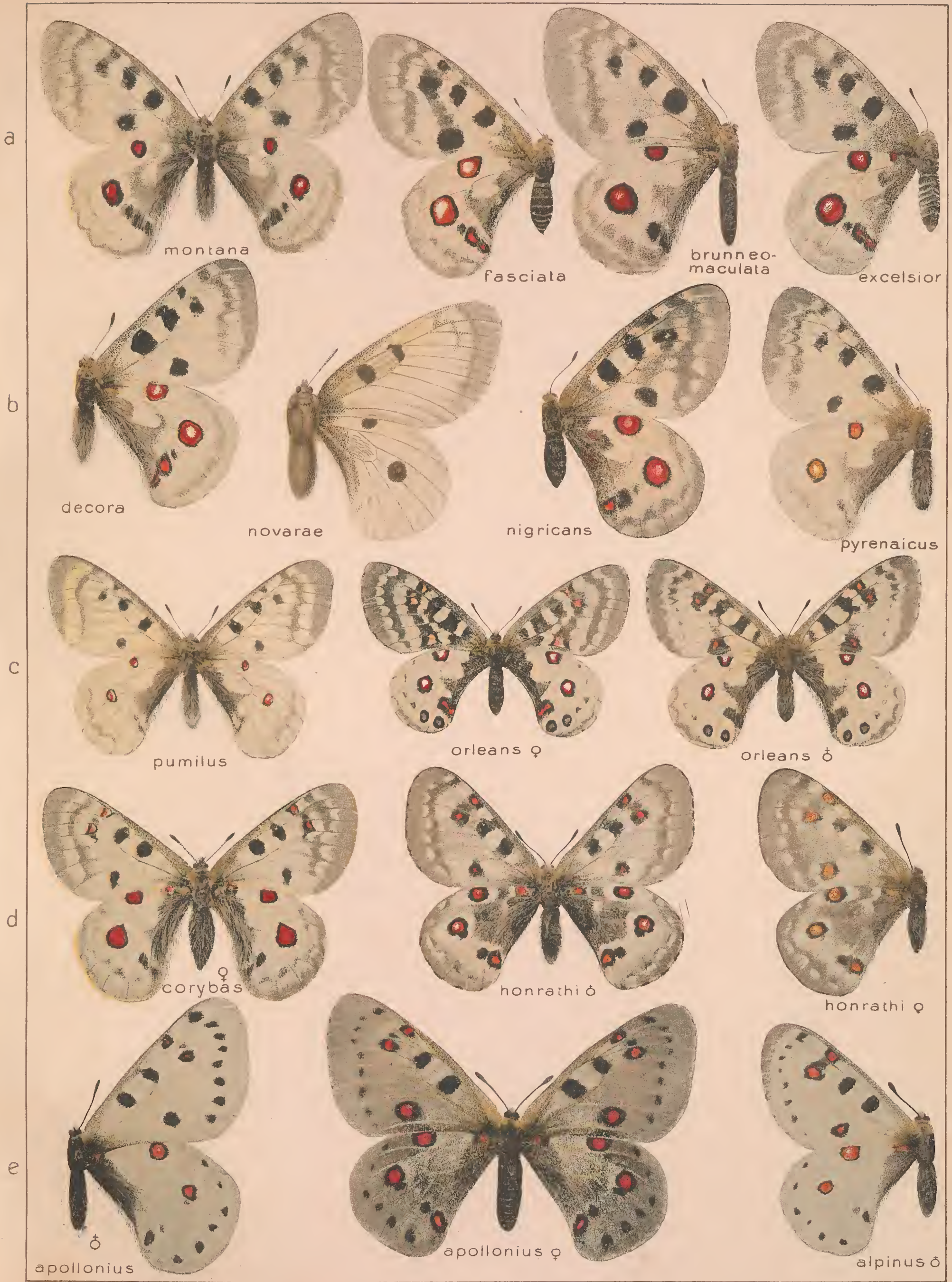
PARNASSIUS



PARNASSIUS



PARNASSIUS



PARNASSIUS

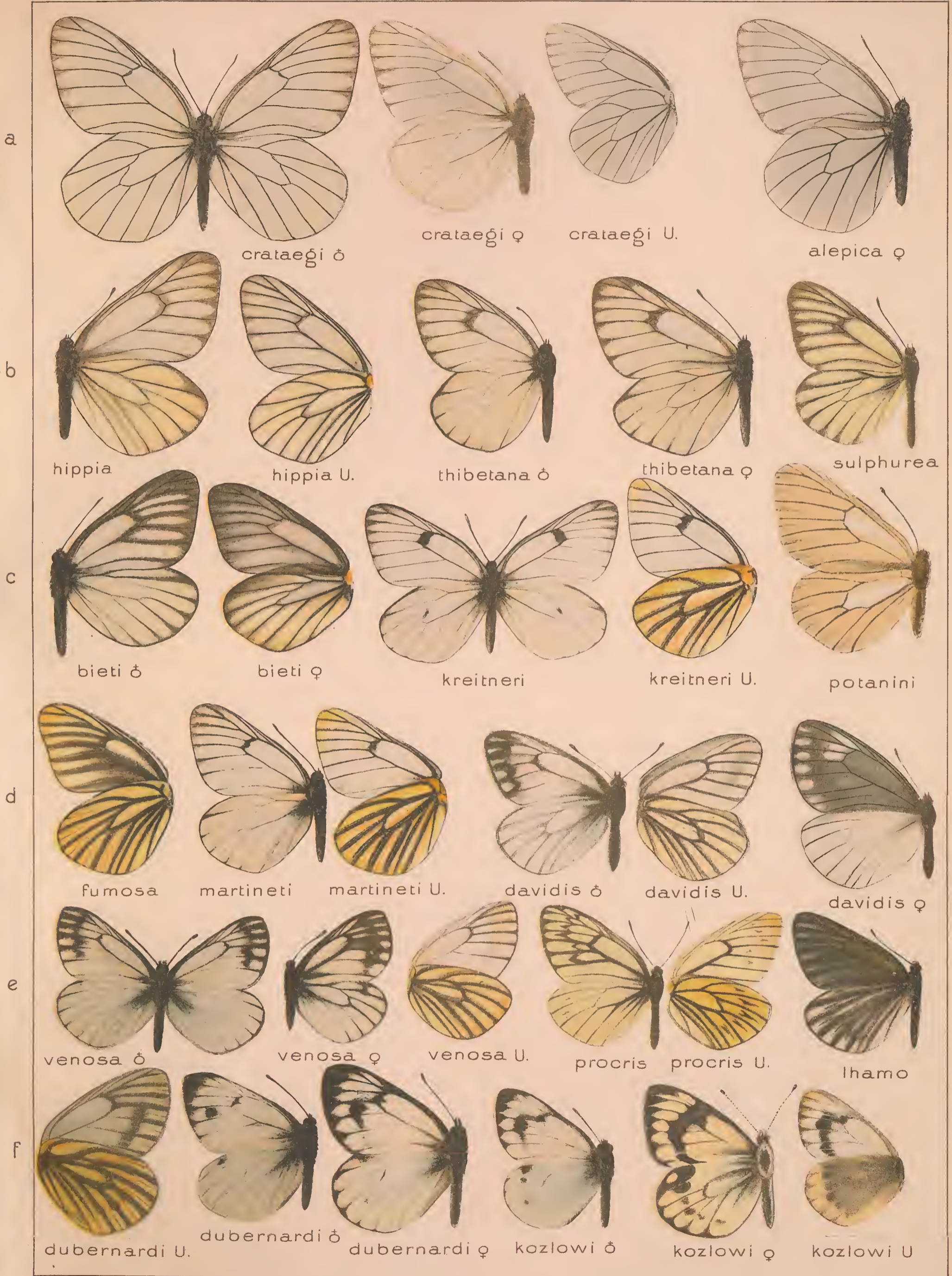


PARNASSIUS



PARNASSIUS





APORIA-METAPORIA.

I.

18.



APORIA-PIERIS

I.



PIERIS-APPIAS

I.

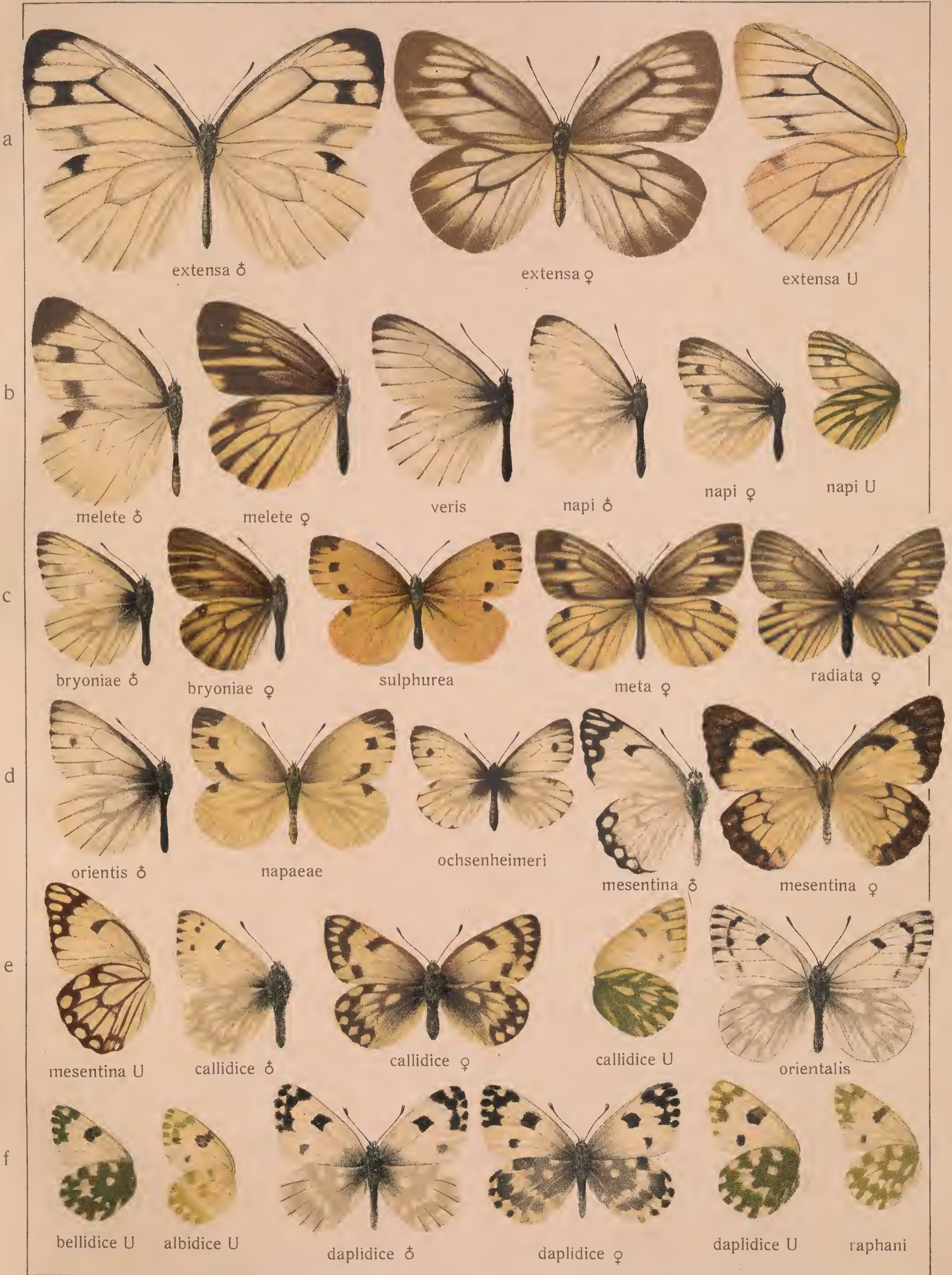


Pars I. Fauna palaeartica 1.

PIERIS-LEUCOCHLOE

1.

21.



PHYLLOCHARIS - EUCHLOE

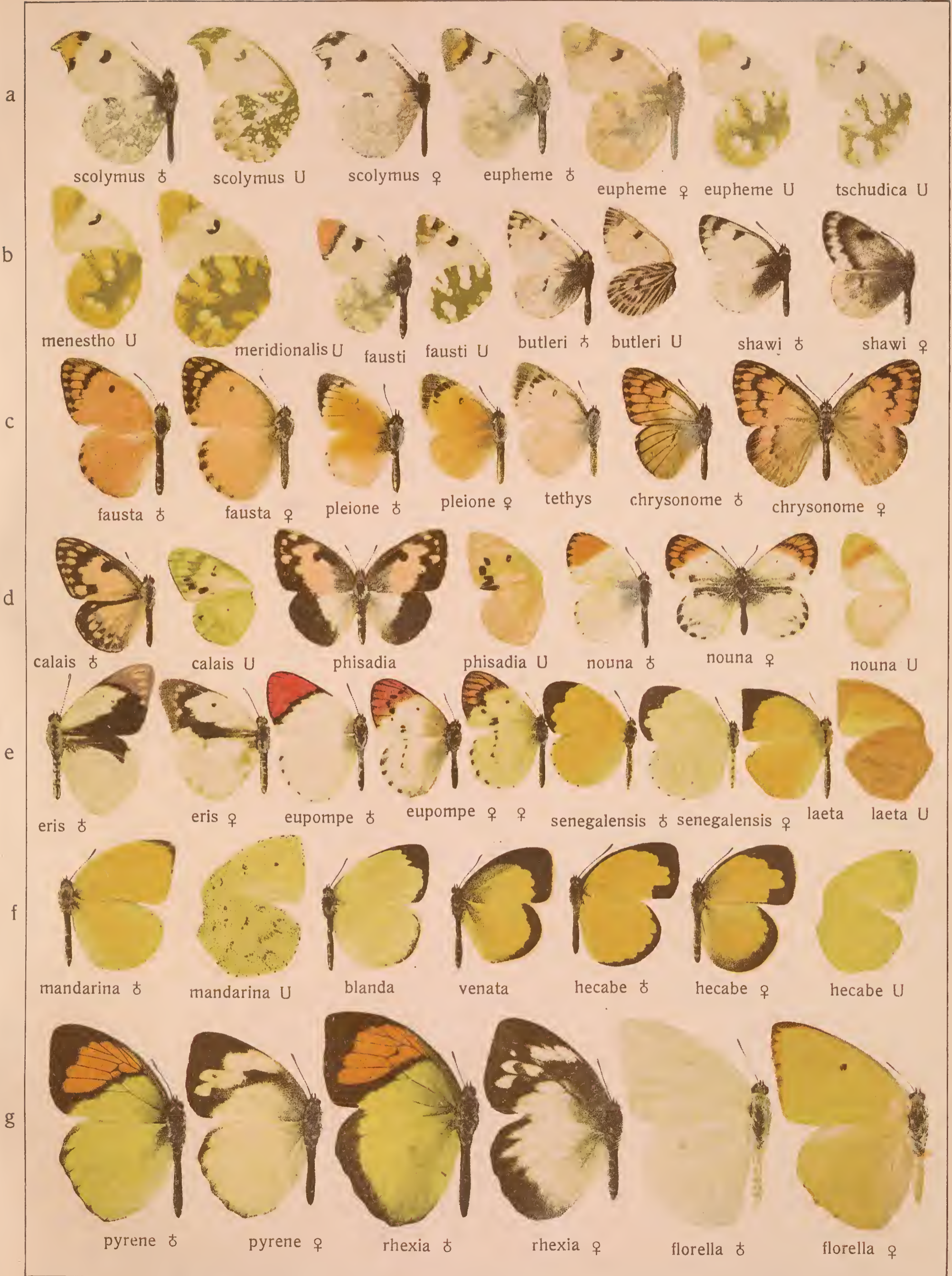


Pars I. Fauna palaeartica. 1.

MIDEA - CATOPSILIA

I.

23.



Pars I. Fauna palaeartica 1.

CATOPSILIA-GONEPTERYX

I.

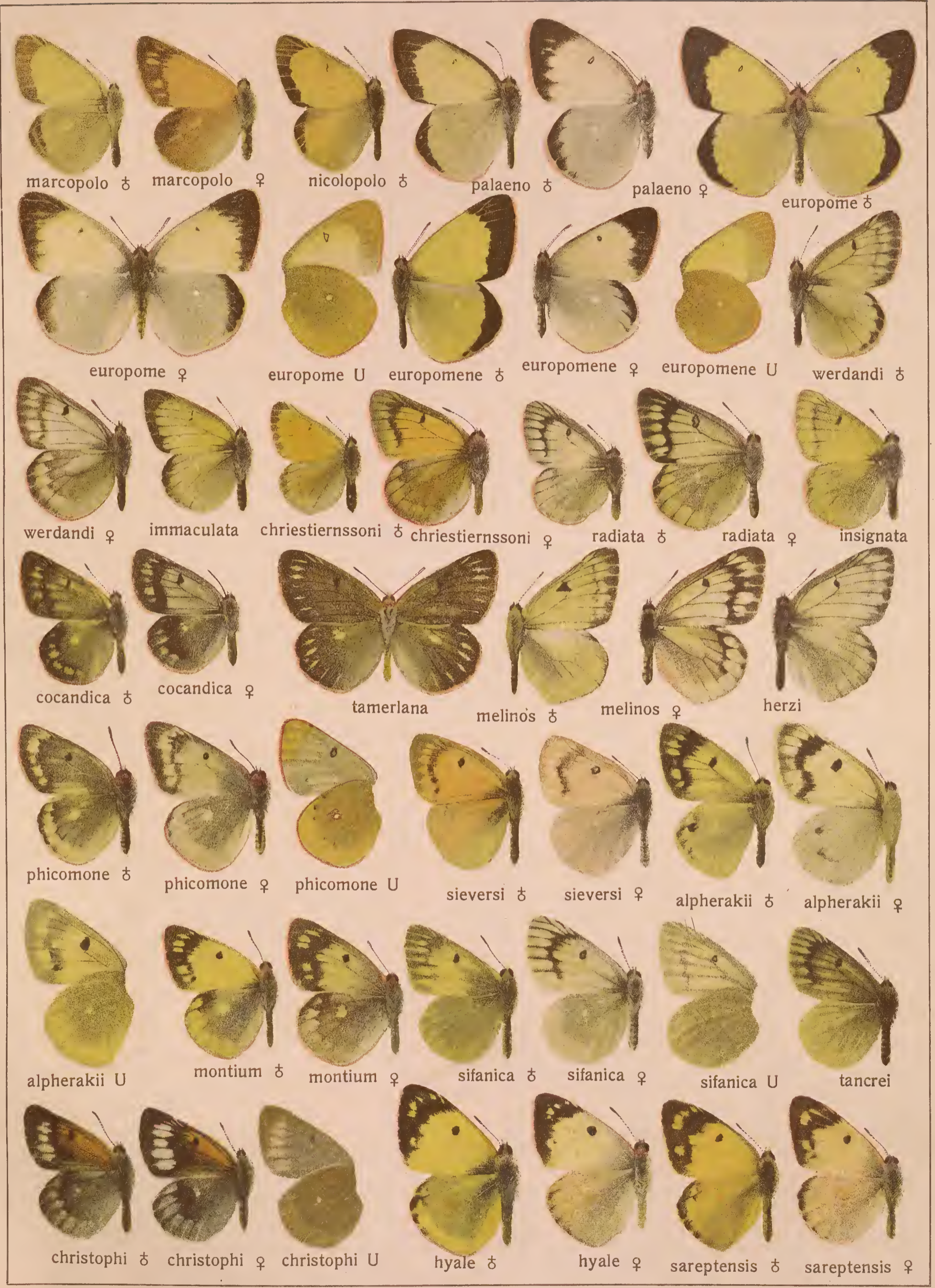
24.



Pars I. Fauna palaeartica 1.

COLIAS

I.



Pars I. Fauna palaeartica 1.

COLIAS



Pars I. Fauna palaeartica 1.

COLIAS

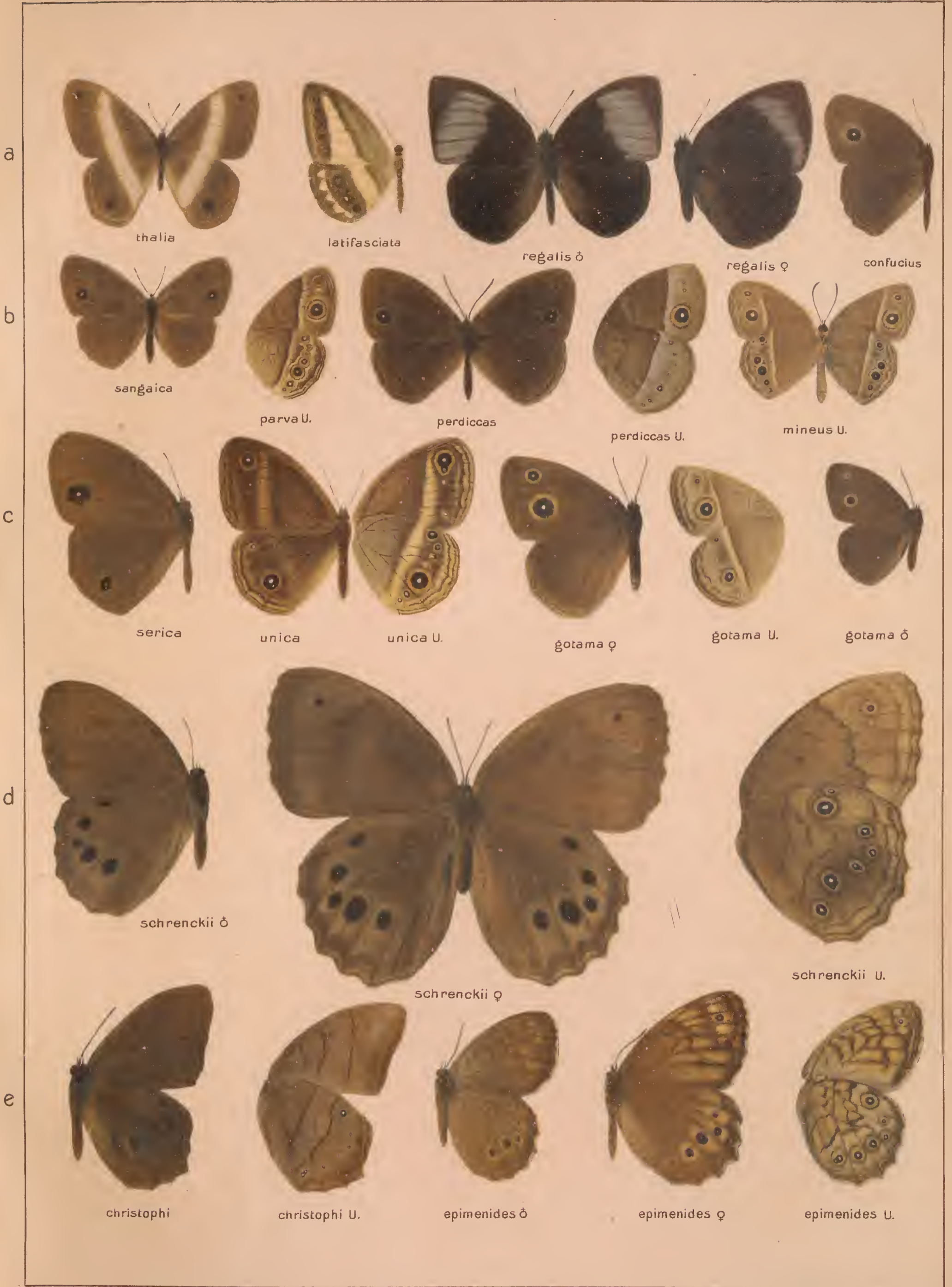


Pars I. Fauna palaeartica.

DANAIS - EUPLOEA



Pars I. Fauna palaeartica 1.









NEOPE



Pars I. Fauna palaeartica 1.

a



hübneri *kasmira* U. *asterope* *asterope* U. *zodia* *zodia* U. *baldus* ♂ *baldus* ♀

b



argus U. *baldus* U. *motschulskyi* ♂ *motschulskyi* ♀ *perfecta* *perfecta* U. *chinensis* U.

c



praenubila *praenubila* U. *megalomma* *megalomma* U. *beauti*

d



insolita *insolita* U. *iris* *iris* U. *drommonides* *ciris* *ciris* U.

e



sakra U. *medusa* *medusa* U. *methorina* U. *conjuncta* ♂ *conjuncta* ♀ U.

f



polyphemus ♂ *polyphemus* ♀ U. *orixa* ♂ *orixa* ♀ U.

CALLEREBIA - EREBIA



Pars I. Fauna palaeartica 1.

EREBIA



EREBIA



Pars I. Fauna palaeartica 1.

MELANARGIA.

I.

a



galathea ♂ galathea ♀ galathea U. procida ♂ leucomelas U turcica

b



turcica U. lucasi ♂ lucasi ♀ lachesis ♂ lachesis ♀ cataleuca U.

c



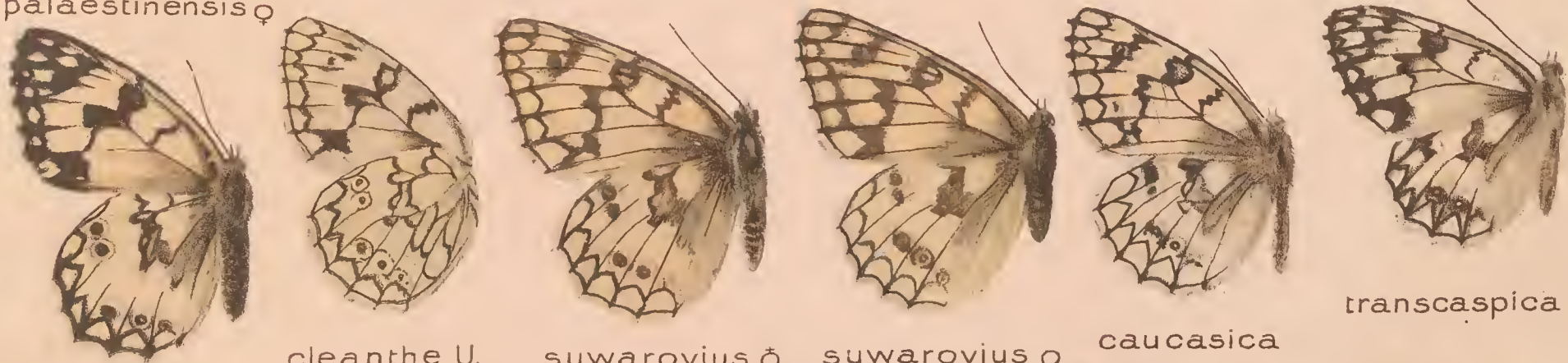
titea ♂ titea ♀ titea U teneates ♂ teneates U. palaestinensis ♂

d



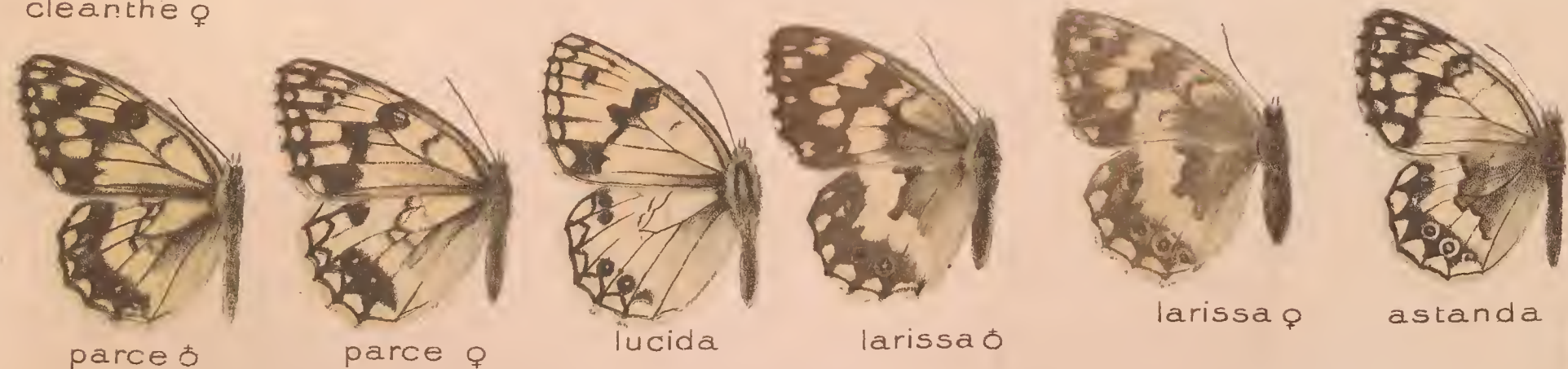
palaestinensis ♀ palaestinensis U. titania ♂ japygia ♀ cleanthe ♂

e



cleanthe ♀ cleanthe U. suwarovius ♂ suwarovius ♀ caucasica transcaspica

f



parce ♂ parce ♀ lucida larissa ♂ larissa ♀ astanda

MELANARGIA.

I.

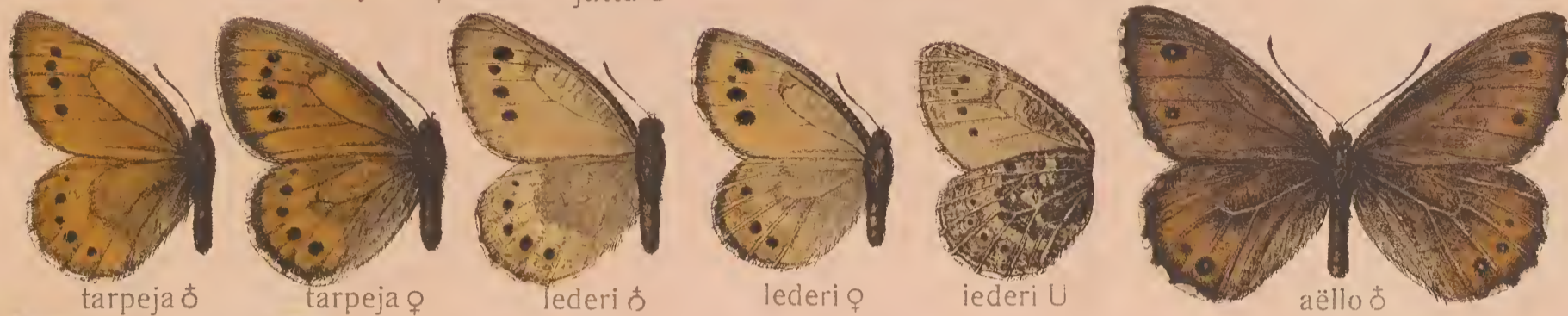


OENEIS

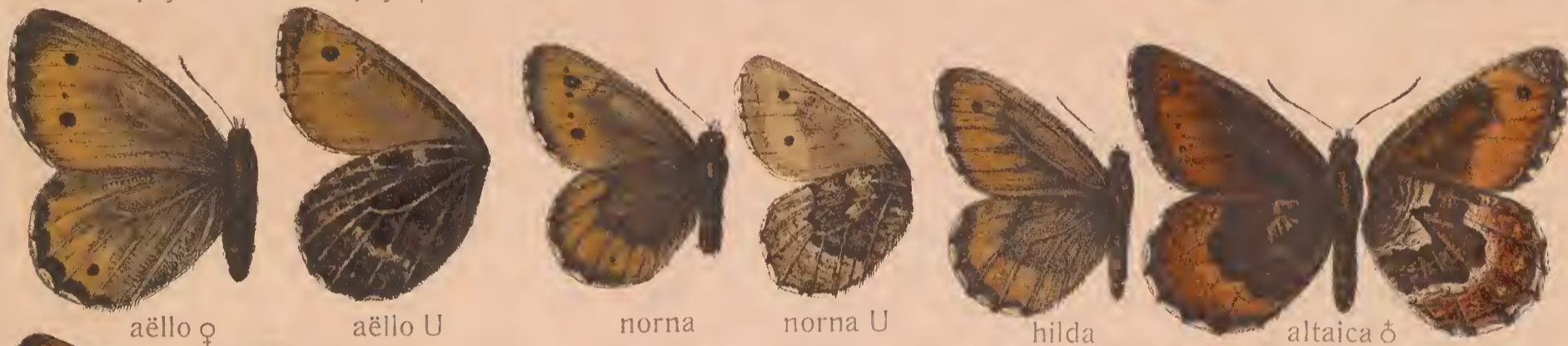
a



b



c



d



e



f



g





SATYRUS



Pars I. Fauna palaeartica 1.



Pars I. Fauna palaeartica 1.

SATYRUS

I



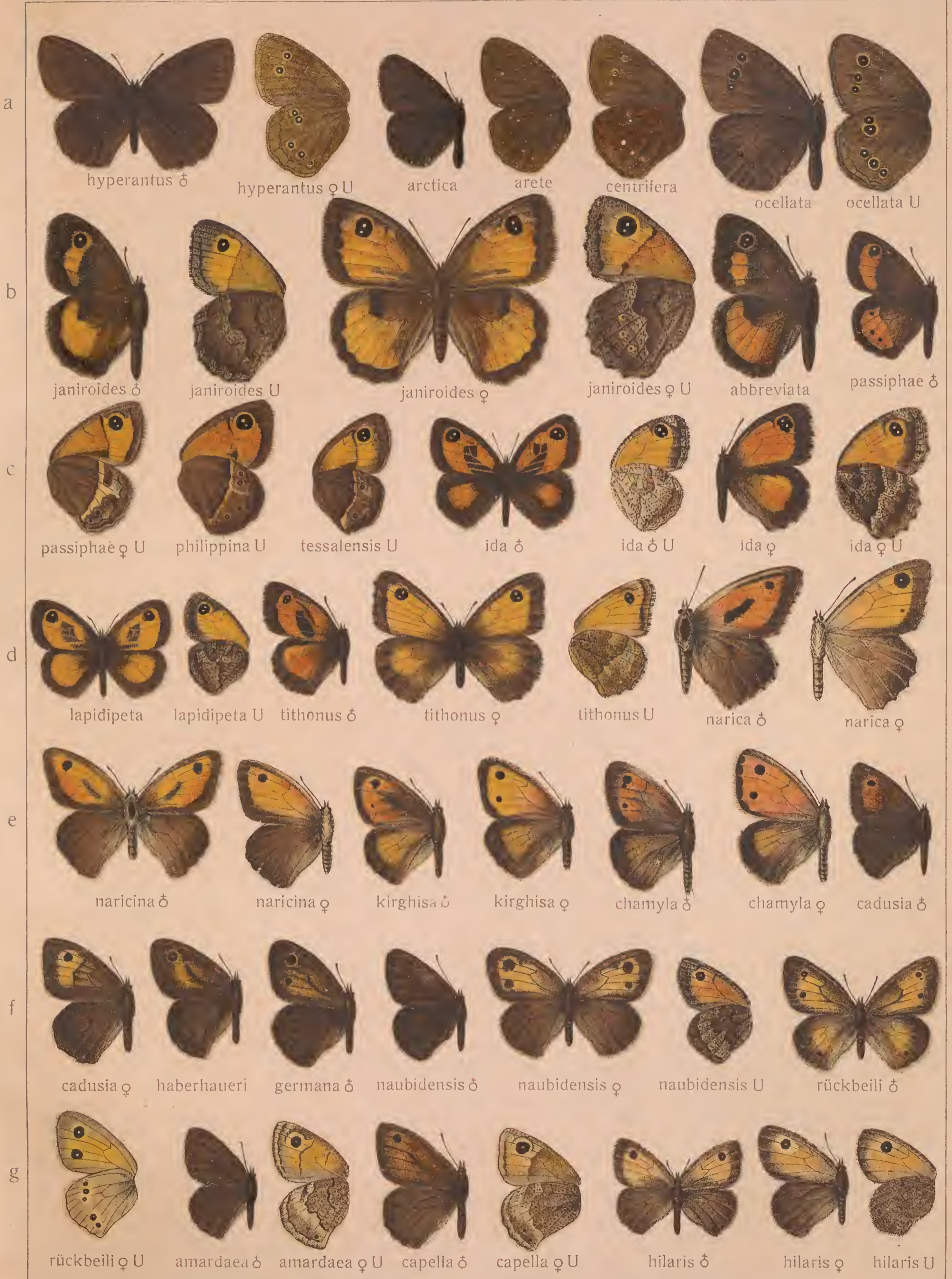
Pars I. Fauna palaeartica 1.

PARARGE - APHANTOPUS

1.



APHANTOPUS - EPINEPHELE



Pars I. Fauna palaeartica 1.

EPINEPHELE

I.



EPINEPHELE - TRIPHYSA



Pars I. Fauna palaeartctica 1.

AMATHUSIINAE

I

a



howqwa



suffusa



suffusa U

b



neumoegeni ♀



neumoegeni ♂



lunatus ♂



lunatus ♀

c



aerope



aerope U



oberthüri



enervata

APATURA

1.



APATURA - SASAKIA

I.

a



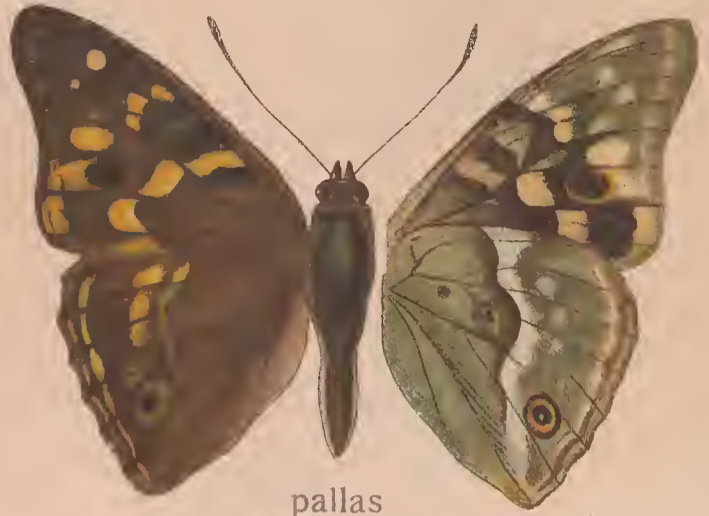
laverna



fulva



fasciola



pallas

b



leechii



schrenckii U



schrenckii

c



subalba



cassiope



nycteis



fenestra

d



charonda ♀



charonda ♂

EURIPUS - ERIBOEA



NEPTIS



Pars I. Fauna palaeartica 1.

NEPTIS

a



thibetana

antonia

antonia U

sylvia U

b



ananta

chinensis U

thestias

meloria U

c



noyala U

annaika U

patricia U

sylvana U

disopa

d



disopa U

armandia

hesione

antilope

e



antilope U

narcissina

thisbe

dilutior U

f



obscurior U

themis

theodora U

thetis

NEPTIS - ATHYMA

I

a



yunnana



nemorum U



antigone

b



beroë



arachne



arachne U

c



aspasia



aspasia U



cydippe



nemorum U

d



raddei



bieti



gertraudis ♂



bunea ♂



ambica ♀

e



magnifica ♀



metis ♀



bucovinensis



selenophora ♂



cama ♀

THALEROPIS - LIMENITIS

I.



LIMENITIS



EUTHALIA



ATHYMA - CALINAGA

I.



HESTINA - KALLIMA



ERIBOEA - JUNONIA



Pars I. Fauna palaeartica 1.

PRECIS-VANESSA

I.



Pars I. Fauna palaeartica 1.

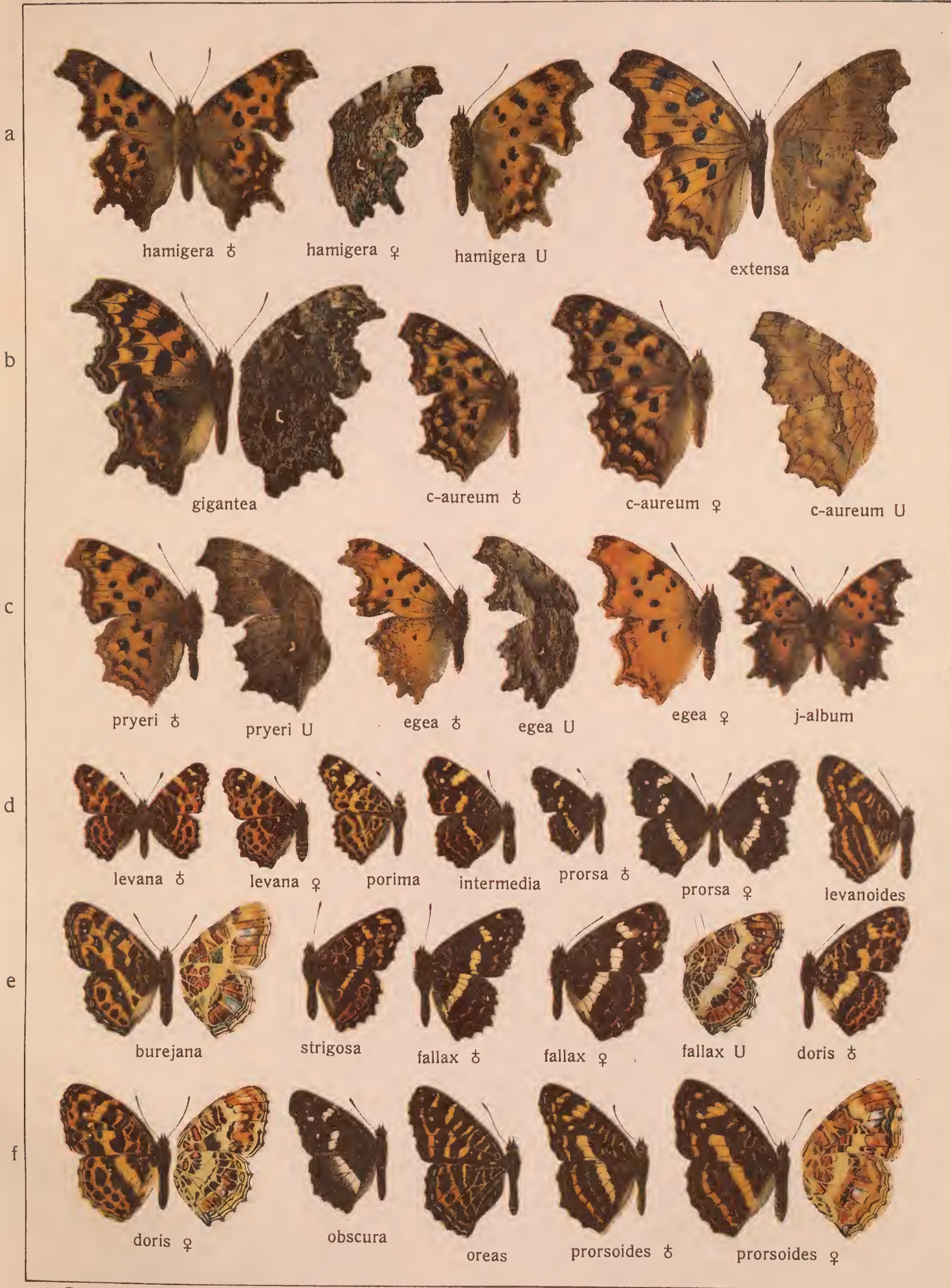
VANESSA-POLYGONIA



Pars I. Fauna palaeartica 1.

POLYGONIA-ARASCHNIA

I.



Pars I. Fauna palaeartica 1.

MELITAEA



Pars I. Fauna palaeartica 1.

MELITAEA



Pars I. Fauna palaeartica 1.

MELITAEA - ARGYNNIS



Pars I. Fauna palaeartica 1.

ARGYNNIS



Pars I. Fauna palaeartica 1.

ARGYNNIS

I



Pars I. Fauna palaeartctica 1.

ARGYNNIS



ARGYNNIS - LIBYTHERA



Pars I. Fauna palaeartica 1.

RAPALA - THECLA



THECLA - ZEPHYRUS



ZEPHYRUS



ZEPHYRUS - CIGARITIS



CIGARITIS - CHRYSOPHANUS



Pars I. Fauna palaeartica 1.

CHRYSOPHANUS - LAMPIDES



LAMPIDES - LYCAENA



LYCAENA



Pars I. Fauna palaeartica 1.

LYCAENA

I



LYCAENA

I



LYCAENA



Pars I. Fauna palaeartica 1.

LYCAENA - CYANIRIS

a



alcon ♂



alcon ♀



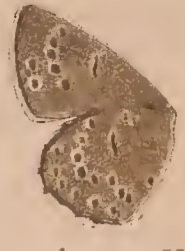
monticola



euphemus ♂



euphemus ♀



euphemus U

b



obscurata



euphemia ♂



euphemia ♀



kazamoto ♂

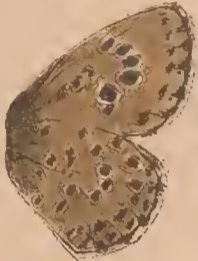


kazamoto ♀



kazamoto U

c



arion U



arion ♂



arion ♀



obscura ♂



obscura ♀



obscura U

d



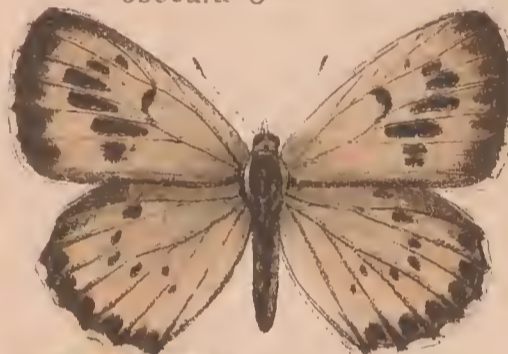
cyanecula U



cyanecula



arionides ♂



arionides ♀



atroguttata

e



atroguttata U



pryeri ♂



pryeri ♀



pryeri U



arcas ♂



arcas ♀ U

f



coelestina



dilectus



hersilia



orcas ♂



orcas ♀



hamada U

g



hamada



vardhana ♂



vardhana ♀



nebulosa



argiolus ♂



argiolus U

h



argiolus ♀



hypoleuca ♀



hypoleuca ♂ U



alboceruleus



alboceruleus U



hügelii ♂



hügelii ♀

CALLIANA - NOTOCRYPTA



Pars I. Fauna palaeartica 1.

CARCHARODUS - HESPERIA



Pars I. Fauna palaeartica 1.

HESPERIA - APOSTICTOPTERUS



Pars I. Fauna palaeartica 1.

ERIONOTA - ADOPAEA

a



thrax



grandis



bicolor

b



bicolor U



morpheus



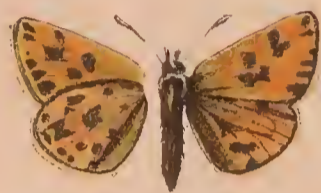
morpheus U



unicolor



unicolor U



houangty



silvius

c



silvius U



palaemon



palaemon U



abax



pulchra



flavomaculata



maro ♂

d



christophi



niveomaculata



dieckmanni



maga



maro ♀



maro ♀ U

e



maevius U



maevius



trimacula



dalailama



flavoides ♂



flavoides ♀

f



micio



leonina ♂



leonina ♀



astigmata



stigma



lineola

g



acteon ♂



acteon ♀



hamza ♂



hamza ♀



christi



thaumas ♂



thaumas ♀

h



sylvatica U



sylvatica ♂



sylvatica ♀



tenebrosa ♂



tenebrosa ♀



nervulata

AUGIADES - PARNARA



ERYCINIDAE - ISMENE

