

Description of a new species of the genus
***Lampetis* Dejean, 1833**
from the Shan-state in Myanmar
(Coleoptera, Buprestidae)

Michael HORNBERG

Zusammenfassung: Es wird die Art *Lampetis shanensis* **n. sp.** aus Myanmar beschrieben und abgebildet, sowie in den Artenschlüssel der *Lampetis*-Arten Indochinas von AKIYAMA & OHMOMO (1994) eingefügt.

Abstract: *Lampetis shanensis* **n. sp.** is described and illustrated as well as included in the key to the Indochinese species of the genus *Lampetis* given by AKIYAMA & OHMOMO (1994).

Key words: Coleoptera, Buprestidae, *Lampetis*, new species, Myanmar

Introduction

From the biogeographic region of Indochina are known seven species of the genus *Lampetis* Dejean, 1833, all placed in the subgenus *Spinthoptera* Casey, 1909. Most of them were described in the 19th century. The last revision was published by AKIYAMA & OHMOMO (1994), who described two new species belonging to this region. During a journey to Myanmar the author collected a species of *Lampetis* which differs distinctly from the other species of the genus by the combination of structure and colour of the surface. Further examinations confirmed, that this species was not known so far.

Lampetis (Spinthoptera) shanensis **n. sp.**

Specimens examined: Holotype male, (Fig. 1, 2): Myanmar, Shan-State, Nyaung Shwe S/E (Inle-Lake), 20°41'11''N, 96°58'04''E, 970m, 20.XI.2003, leg. M. HORNBERG.

Paratypes: 14 males, 4 females, Myanmar, Shan-State, Nyaung Shwe S/E (Inle-Lake), 20°37'36''N, 96°57'28''E, 920m, 17.XI.2003, leg. M. HORNBURG; 2 males, 6 females, Myanmar, Shan-State, Nyaung Shwe S/E (Inle-Lake), 20°37'36''N, 96°57'28''E, 920m, 19.XI.2003, leg. M. HORNBURG; 14 males, 14 females, Myanmar, Shan-State, Nyaung Shwe S/E (Inle-Lake), 20°41'11''N, 96°58'04''E, 970m, 20.XI.2003, leg. M. HORNBURG.

Additional material: 1 male, Burma, 24.VI.1997, N Mandalay division, ca 30 km SW Pyin Oo Lwin, (on road P. O. Lw.- Mandalay). J. KALÁB leg." (coll. V. KUBAN).

The holotype will be deposited at the Museum für Naturkunde der Humboldt-Universität zu Berlin (MNHUB), Germany. Paratypes will be deposited in the following collections: Museum für Naturkunde der Humboldt-Universität zu Berlin (MNHUB), Germany; Deutsches Entomologisches Institut (DEI), Germany; Zoologische Staatssammlung München (ZSMC), Germany; The Natural History Museum (BMNH), London, Great Britain; Stephan Gottwald Collection, Berlin; Hans MÜHLE Collection, München; Dr. Manfred NIEHUIS Collection, Albersweiler; Peter BRANDL Collection, Kolbermoor; Dr. Svatopluk BÍLÝ Collection, Prague; Vit KUBAN Collection, Brno; Dr. Charles BELLAMY Collection, Sacramento, USA; Dr. Sadahiro OHMOMO Collection, Japan and Michael HORNBURG Collection, Berlin.

General diagnosis: length: 14–26 mm, width: 4–9 mm; dark bronze coloured, pronotum more light than elytra; short antenna; bronze legs with bluish green tarsi.

Description of Holotype (Fig.1): total length: 20 mm, width: 6,5 mm.

Head: bronze black with violet tinge, basis greenish; frons strongly and irregularly punctured; punctures merged, getting weaker to the vertex; punctures violet-red on the ground; labrum violet-red; antennal cavities bordered to the frons by distinct ridges, phasing out slightly below the middle of the eyes; antennae dark greenish bronze, short; first antennomere dark violet-red, second antennomere shortest, nearly globular; third 1,4 times longer than second, fifth slightly serrated; distinct serrated and truncated at the apices from the sixth.

Pronotum: dark bronze with violet tinge; 1,4 times longer than wide, greatest width and nearly parallel in basal third; lateral-punctures strong and confluent, on the disc strong but more distant; punctures

violet-red on the ground; surface between punctures finely microsculptured, nearly shiny.

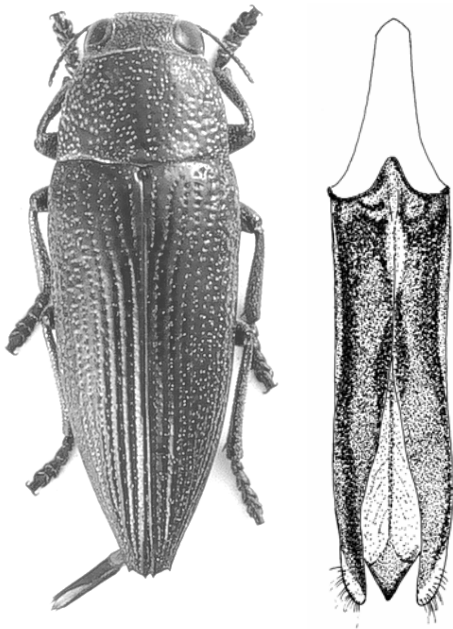
Elytra: 2,1 times longer than wide; bronze black with slight violet and green tinge, darker than pronotum; dorsal punctures regularly in rows, ridges between puncture-rows not interrupted or with black spots; lateral punctures strong and confluent over the whole length of elytra.

Ventral surface: violet-greenish coloured, with short and regular white pubescence.

Legs: violet-greenish coloured, with short and regular white pubescence; tibiae more densely setose than femur; tarsi bluish green, claws simple.

Aedeagus (Fig. 2): 5,1 times longer than wide, slender and more or less parallel; paramere simple pointed to the slight setose apices.

Derivatio nominis: The species is named after the Myanmar Shan-state, the collecting locality of the type series.



Figures 1 & 2: 1 (left), *Lampetis shanensis* n. sp., holotypus, dorsal view; 2 (right), aedeagus.

Because of the appearance of the new species, the “Key to Indo-chinese species of the genus *Lampetis*” (AKIYAMA & OHMOMO 1994) will be modified as follows (page 18, code number 2):

- 2 Elytra ornamented with numerous small golden-yellow spots; abdomen sparsely punctured, with longitudinal pubescent bands on each side near lateral margins. *puncticollis* Saunders
- Elytra ornamented with numerous small rectangular black or green spots; abdomen uniformly punctured, without longitudinal pubescent bands. 3
- Elytral rows on disc regularly punctured, intervals not interrupted and without or with nearly absent rectangular dark spots, elytra dark bronze black with slight violet or greenish tinge. Pronotum dark bronze with violet tinge; aedeagus (Fig. 2) slender and more or less parallel *shanensis* **sp. n.**

Other points of the key are not concerned by this modification and stay unchanged.



Figure 3: Pair of *Lampetis shanensis* **n. sp.** in copula on a Mimosaceae tree.

Notes on biology: *Lampetis shanensis* **n. sp.** was collected only on the south-east, scantily overgrown hills, surrounding the lake “Inle” in Shan-state, Myanmar, in company with *Lampetis holynskii* Akiyama & Ohmomo. Both species were found feeding and copulating on a small, not determinate Mimosaceae-tree (Fig. 3). No holes or tunnels in the

branches and trunks of the trees could be diagnosed. It is most probable that the species develops in the roots, but no further investigations were made.

Remarks

At the male-specimen of the type series could be noticed a good variability of the sixth antennomere. The antennomeres of the females are not truncated as distinct as in the males.

Furthermore, at the present time, the specimen listed under additional material can only be affiliated to the new species. However, slight differences are remarkable and due to this reason the specimen is not included in the type series. The colour of ventral surface and head is green, the lateral ridges of frons are slightly longer than in the type series. Pronotum and elytra are dark bronze greenish and more shiny. The aedeagus and the general body-shape are without differences. The assessment of this unique specimen remains uncertain until further material will be available.

Acknowledgements

I would like to thank my friend Stephan GOTTWALD (Berlin) for discussions and valuable comments, Vít KUBAN (Czech Republic) for the loan of material and Dr. Svatopluk BÍLÝ (Czech Republic) for reviewing the manuscript. Warm thanks also to Annett KRAUSE (Berlin) for the linguistic revision of the draft.

References

- AKIYAMA, K. & OHMOMO, S. (1994): Notes on the genus *Lampetis* Spinola from Indochina (Coleoptera, Buprestidae). – Entomological Review of Japan **49**(1):17–24.
- AKIYAMA, K. & OHMOMO, S. (2000): The buprestid beetles of the world. – Mushi-Sha's Iconographic Series of Insects **4**:1–341.

BELLAMY, C. L. (2003): An illustrated summary of the higher classification of the superfamily Buprestoidea (Coleoptera). – Folia Heyrovskyana, Supplementum **10**:1–197.

KUROSAWA, Y. (1993): Reorganization of the genus *Psiloptera* (Coleoptera, Buprestidae). – Japanese Journal of Entomology **61**(3):577–583.

Author:

Michael HORNBURG

Kavalierstraße 11

D-13187 Berlin.

E-mail: mihornburg@t-online.de

Veranstaltungsvorschau

Entomologentagung Dresden

Ort: **Dresden**, TU Dresden, Bergstraße 64

Zeit: 21.–24. März 2005

Kontakt:

Dr. Ulrich RATSCHKER, TU Dresden, Professur für Forstzoologie, Piennner Str. 9, D-01737 Tharandt.

Tel.: 0049 (0)35203/38 31 35 1 / Fax: 0049 (0)35203/38 31 31 7

e-Mail: dgaae@snsd.de / dgaae@snsd.smwk.sachsen.de

Biodiversität und Naturausstattung im Himalaya

Ort: **Erfurt**, Naturkundemuseum Erfurt, Große Arche 14,
D-99084 Erfurt.

Zeit: 08.–10. April 2005

Kontakt:

Matthias HARTMANN (Anschrift wie oben)

Tel.: 0049 (0)361/65 55 68 2 / Fax: 0049 (0)361/65 55 68 9

e-Mail: matthias.hartmann@erfurt.de

ZOBODAT - www.zobodat.at

Zoologisch-Botanische Datenbank/Zoological-Botanical Database

Digitale Literatur/Digital Literature

Zeitschrift/Journal: [Mitteilungen des Internationalen Entomologischen Vereins](#)

Jahr/Year: 2004

Band/Volume: [29 2004](#)

Autor(en)/Author(s): Hornburg Michael

Artikel/Article: [Description of a new species of the genus *Lampetis* Dejean, 1833 from the Shan-state in Myanmar \(Coleoptera, Buprestidae\) 65-70](#)