

Two new Tiger Beetle species from Asia (Coleoptera: Cicindelidae)¹

Jürgen WIESNER

Abstract: *Protocollyris ngaungakshani* n. sp. from China is described. It is distinguished by its unicoloured labrum and the stout shape of the aedeagus. *Calochroa holzschuhi* n. sp. from Laos is described. It is distinguished by its body size, elytral maculation, shape of female coupling sulcus and male aedeagus.

Zusammenfassung: *Protocollyris ngaungakshani* n. sp. aus China wird beschrieben. Das Taxon ist durch seine einfarbige Oberlippe und die gedrungene Form des Aedeagus charakterisiert. *Calochroa holzschuhi* n. sp. aus Laos wird beschrieben. Das Taxon ist durch seine Körpergröße, die Flügeldeckenzeichnung und die Form des "coupling sulcus" der Weibchen und des Aedeagus der Männchen charakterisiert.

Key words: Tiger beetles, Cicindelidae, *Protocollyris*, *Calochroa*, new species, Hong Kong, Laos

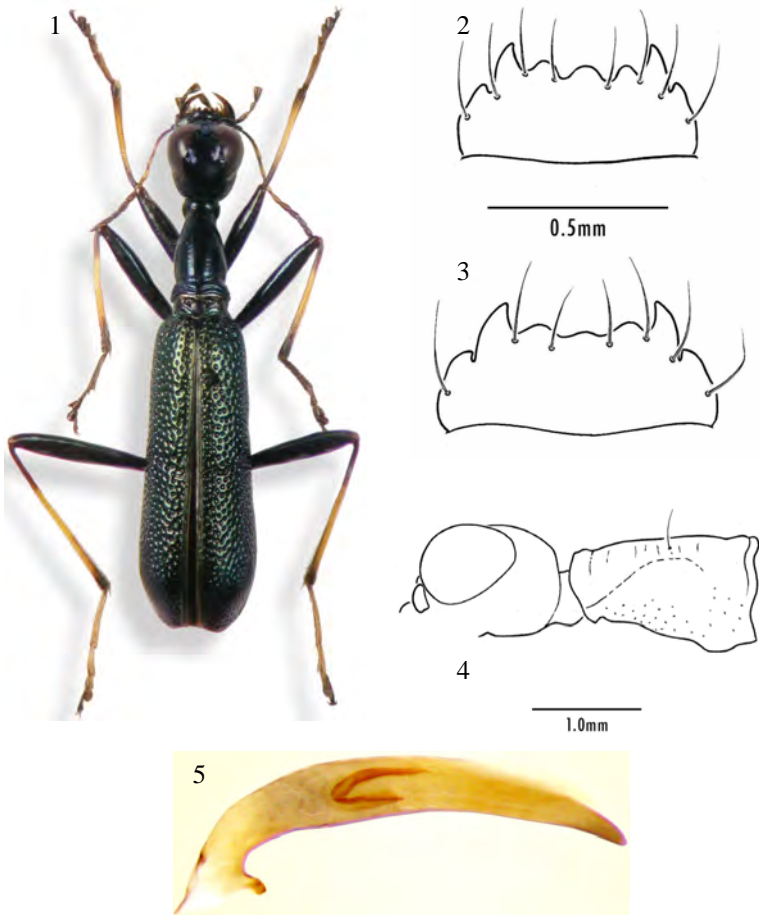
Due to the kindness of Vor YIU, Hong Kong, China and Ondrej SAFRANEK, Jiretin pod Jedlovou, Czech Republic, I received two new tiger beetle species, one from Hong Kong and one from Laos, which are described as new to science in the following.

Protocollyris ngaungakshani n. sp. (figs 1–6)

Material examined: Holotype male CHINA, Hong Kong, Ngau Ngak Shan, Vor Yiu leg., 6.vi.2010, 675 m, N22°24'52.4"

¹ 110. Contribution towards the knowledge of *Cicindelidae*.

E114°14'55.4"; paratype (1 female) CHINA, Hong Kong, Ngau Ngak Shan, Vor Yiu leg., 30.v.2009, 675 m, N22°24'52.4" E114°14'55.4"; paratypes (2 females) CHINA, Hong Kong, Ngau Ngak Shan, Vor Yiu leg., 25.vi.2011. Holotype and 2 paratypes in coll. WIESNER (later SMNS, Staatliches Museum für Naturkunde Stuttgart), 1 paratype in Insect Museum of Tai Lung Experimental Farm, Hong Kong, coll. Yiu.



Figs 1–5: *Protocollyris ngaungakshani* n. sp.: 1) habitus holotype male; 2) labrum holotype male; 3) labrum paratype female; 4) head and pronotum, lateral view; 5) aedeagus holotype male.



Fig. 6: Collecting site of *Protocollyris ngaungakshani* n. sp. at Ngau Ngak Shan.

Diagnosis

The genus *Protocollyris* (characterized by the very flat interocular excavation, small size and short labrum, NAVIAUX 1995: 36) is represented in China by two species, *P. sauteri* (Horn, 1912) from Taiwan and *P. grossepunctata* (Horn, 1935) from Jiangxi. The new species is distinguished from *P. sauteri* by its unicolorous labrum and less arcuated shape of the aedeagus and from *P. grossepunctata* by larger body size and the stouter shape of the aedeagus.

Description

Head: Mandibles dark brown, lightened towards teeth. Labrum (figs 2, 3) dark brown, lightened towards teeth, very short, with seven teeth and eight lateral setae. Palpi dark brown, lightened at apex. Antennae dark brown, joints 3 to 7 lightened, when bent backwards reaching middle of pronotum; antennae a little shorter in females. Head bluish black, interocular excavations convergent anteriorly and divergent laterally.

Thorax (fig. 4): Pronotum bluish black, 1.8 x longer than wide, frons broader at base, laterally with one to two long white hairs above outer margins.

Elytra: Greenish black, slightly extended in the apical third. Entirely covered with deep punctures that are shallower only near apex. Elytral apex with angular lateral rounded edge and sutural corner, latter strongly recurved in male, a little only in females.

Underside: Venter black-green. Male legs yellow-brown, femura dark brown. Legs of females black as a whole.

Male aedeagus (fig. 5): 1.7 mm long, narrow, straight, elongate.

Total length (without labrum): 8.1–9.1 mm, mean 8.7 mm, n = 4.

Etymology: This new *Protocollyris* species is named after its collecting site, Ngau Ngak Shan Mountain (fig. 6).

Calochroa holzschuhi n. sp. (figs 7–11)

Material examined: Holotype, male, and seven paratypes (3 males, 4 females) NE Laos, Hua Phan prov., Ban Saleui, Phou Pan (Mt), 20°12'N, 104°01'E, 10.V.-16.VI.2009, 1300-1900 m, leg. C. Holzschuh, Holotype and 1 paratype female in coll. WIESNER (later SMNS, Staatliches Museum für Naturkunde Stuttgart), 1 paratype male in coll. MORAVEC, 2 paratype males and 3 paratype females in coll. SAFRANEK.

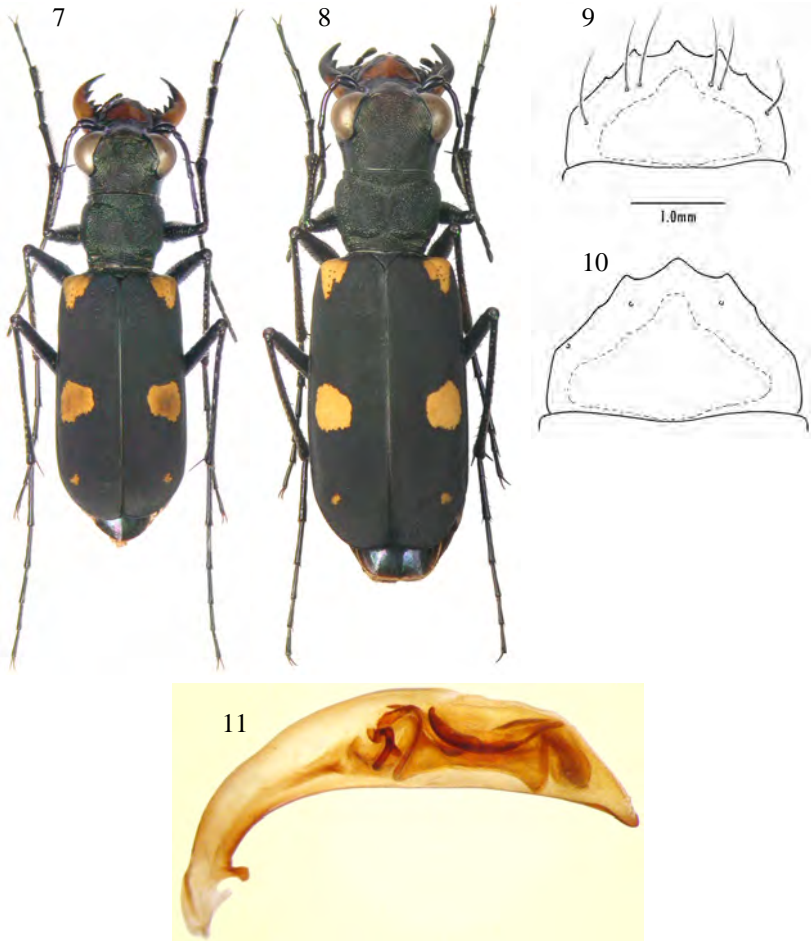
Diagnosis

Similar to *Calochroa salvasai* (Fleutiaux, 1819), but body size larger and not as flat in lateral view. Elytra showing a little apical spot, which is absent in *salvasai*. Coupling sulcus of female mesepisternum with a longitudinal tip instead of a small groove. Aedeagus with a pointed tip, not roundish like a knob.

Description

Head: Blackish, finely granulated; clypeus and vertex with longitudinal striae in the central depression between eyes becoming irregularly; two supraorbital bristles near each eye. Labrum (figs 9, 10) in both sexes blackish, in different expansion yellow at base, with up to six labral setae, shorter in males than in females; mandibles blackish with yellow central patch larger in males and smaller in females. Maxillary palpi glabrous, blackish. Labial palpi with long white bristles, yellow except last segment glabrous and blackish. Genae metallic-green/violett with fine longitudinal

striae. Antenna: first segment with setae; filiform, the first four antennomeres bluish-metallic, last segments blackish with fine pubescence.



Figs 7–11: *Calochroa holzschuhi* n. sp.: 7) habitus holotype male; 8) habitus paratype female; 9) labrum holotype male; 10) labrum paratype female; 11) aedeagus holotype male.

Pronotum: Trapezoidal, blackish, with coarse transverse granulation and a fine median line, proepisternum glabrous.

Elytra: Blackish, parallel-sided, with one yellow triangulate humeral spot, one yellow large median spot and one yellow small apikal spot.

Underside: Dark green-bluish-metallic with dense white hairs except for metepisternum and abdominal sternites glabrous. Coupling sulcus of female mesepisternum with a longitudinal tip. Legs blackish violett and with light bristles except for the inner part of meso- and metafemur.

Male aedeagus (fig. 11): 4.4 mm long, narrow, straight, elongate, apical tip elongated and bent downwards.

Total length (without labrum): 14.8–18.2 mm, mean 16.4 mm, n = 8.

Etymology: This new *Calochroa* species is cordially dedicated to its discoverer, Carolus HOLZSCHUH.

Acknowledgements

The author is indebted to YIUI VOR for the photo of the collecting site, to Peter SCHÜLE for the entomological pictures and to Prof. David L. PEARSON for revising the English text.

References

- FLEUTIAUX, E. 1919: Sur quelques Cicindelidae (Col.) d' Indo-Chine (rectifications). – Bulletin de la Société entomologique de France, 252–253.
- NAVIAUX, R. 1995: Les *Collyris* (Coleoptera Cicindelidae). Révision des genres et description de nouveaux taxons. – Bulletin mensuel de la Société linnéenne de Lyon, Separatum: 1–332; Periodicum: **63**, 4: 106–116 (1994); **63**, 5: 133–164 (1994); **63**, 6: 185–216 (1994); **63**, 7: 233–264 (1994); **63**, 8: 273–304 (1994); **64**, 1: 9–40 (1995); **64**, 2: 57–88 (1995); **64**, 3: 105–136 (1995); **64**, 4: 153–184 (1995); **64**, 5: 201–232 (1995); **64**, 6: 259–290 (1995).

Author

Jürgen Wiesner, Dresdener Ring 11, D-38444 Wolfsburg, Germany
juergen.wiesner@wolfsburg.de

ZOBODAT - www.zobodat.at

Zoologisch-Botanische Datenbank/Zoological-Botanical Database

Digitale Literatur/Digital Literature

Zeitschrift/Journal: [Mitteilungen des Internationalen Entomologischen Vereins](#)

Jahr/Year: 2012

Band/Volume: [37 2012](#)

Autor(en)/Author(s): Wiesner Jürgen

Artikel/Article: [Two new Tiger Beetle species from Asia \(Coleoptera: Cicindelidae\) 51-56](#)