

## **A new *Cylindera* Species of the Subgenus *Ifasina* From Bali, Indonesia** (Coleoptera, Cicindelidae)

Fabio CASSOLA<sup>1</sup> & David BRZOSKA

**Abstract.** A new, small, immaculate species of *Cylindera* Westwood, 1831, of the subgenus *Ifasina* Jeannel, 1946, *Cylindera (Ifasina) judy* sp. n., is described from Central Bali, Indonesia. With regard to its lack of elytral spots (sometimes replaced by transversal black tracks), it superficially resembles an Indian endemic species, *Jansenia prothymoides* (W. Horn, 1908), but, unlike it, it has a testaceous non-metallic labrum, a non-hooked male aedeagus and an inner sac typical of the genus *Cylindera*. The Indonesian island of Bali is a much visited country, because of touristic reasons, but entomologically it is still poorly explored, virtually unknown.

**Key words:** Coleoptera; Cicindelidae; tiger beetles; new species; *Cylindera (Ifasina) judy* n. sp.; Bali; Indonesia.

### **Introduction**

Indonesia, as to its tiger beetle fauna, is undoubtedly the richest country in the world. Our present reckoning reveals a total of 274 species, including the new species described below, of which no less than 151 (55.10%, *i.e.* more than half) are endemic to the country. The surface area/quantity of species ratio is consequently very low. Among the many main islands, Sulawesi (formerly Celebes), despite its modest size (little more than 186.000 km<sup>2</sup>), proved to be exceptionally rich, with no less than 116 species, most of them endemic of the island (CASSOLA, 1991;

---

<sup>1</sup> (Studies of Tiger Beetles, CCIII.).

CASSOLA & BRZOSKA, 2008). Other islands, such as Bali, although much visited because of touristic reasons, are still entomologically virtually unknown, as proved by the new unexpected species described here, that was collected in Central Bali by the second author during a short stay in February 2006. An attempt to establish the number of tiger beetles known so far from Bali, based on WIESNER's (1992) world catalogue and on NAVIAUX's revision of Collyrini (1995), as well on subsequent literature led to no results at all. Much to our surprise, no tiger beetle species were recorded in the literature from Bali.

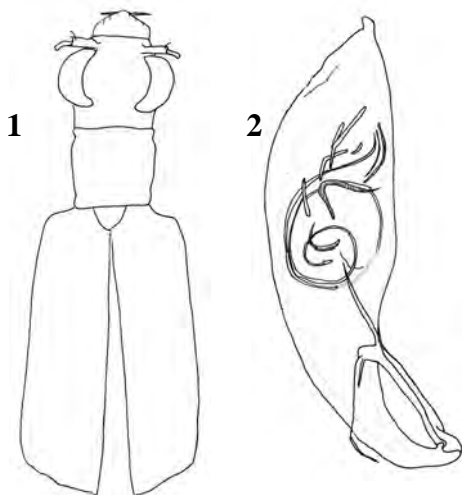


Fig. 1. *Cylindera (Ifasina)* n. sp.: habitus.

Fig. 2. *Cylindera (Ifasina)* n. sp.: aedeagus and inner sac.

***Cylindera (Ifasina) judy* sp. n.**

Holotype, ♂, and twelve paratypes (7 ♂♂ 5♀♀), from Central Bali, Indonesia: Ubud Alam, Jiwa Resort, 185m, 08°31.4S-119°15.5E, 21.II.2006, D. & J. BRZOSKA leg.. Holotype specimen, male, deposited in the collection of the Carnegie Museum, Pittsburgh, Pennsylvania, USA; four paratype specimens (2 ♂♂ 2♀♀), in first author's collection, which was recently donated to the Municipal Museum of Zoology, Roma, Italy (CASSOLA, in preparation); eight paratype specimens (5 ♂♂ 3♀♀) in second author's collection.

## Diagnosis.

A small *Cylindera* Westwood, 1831, species of the subgenus *Ifasina* Jeannel, 1946, superficially similar to the Indian endemic species *Jansenia prothymoides* (W. Horn, 1908) (ACCIAVATTI & PEARSON, 1979), as to the lack of elytral spots (Fig. 1) (sometimes substituted by black transversal tracks), however greatly differing from it because of the testaceous labrum (instead of metallic), the non-hooked aedeagus and the inner sac of the *Cylindera*-type.

## Description.

Head and genae glabrous; colour bronze. Sculpture rather coarse, with rough striations on frons, longitudinal striae on the orbital declivities, longitudinal striation behind in the middle. Labrum testaceous, narrowly darkened in front tooth, rounded, distinctly wider than long, carinate in the middle, with six setae near forward edge some distance from the border. Mandibles robust, testaceous, reddish-black on apical and inner teeth. Palpi testaceous with the last joint metallic dark. Antennae slender, not very long, reaching to almost the first third of the elytral length; antennomeres 1–4 metallic bronze, almost glabrous; antennomeres 5–11 reddish-grey, evenly and finely pubescent.

Thorax: pronotum subsquare, slightly wider than long, rounded at sides, similarly coloured and sculpted as the head; front lobe transversely striated; middle and basal lobes glabrous on disc, finely but distinctly pubescent at the lateral sides.

Elytra wider than head with eyes, dark bronze coloured, irregularly covered with shallow roundish punctures. Elytral markings lacking, sometimes replaced by black transversal tracks. Hind margin micro-serrulate, sutural tooth very small but apparent.

Underside dark metallic bronze to bluish-black, with some white pubescence on the sternum and the last abdominal sternite. Trochanters and legs of the same colour.

Male aedeagus similar to that of *C. (I.) constricticollis* (W. Horn, 1914) (JEANNEL, 1946, fig. 62), tapered, straight, parallel-sided, ending with a slightly curved upwards apical beak, inner sac (Fig. 2) typical of the genus *Cylindera* (RIVALIER, 1950, fig. 5).

Length: 7.2 mm (without labrum).

## Etymology.

*Cylindera (Ifasina) judy* n. sp. is so named in honour and memory of the late Mrs. Judith (Judy) BRZOSKA, who enjoyed very much her visits to Bali and also helped the second author to collect some of the paratypes.

## Remarks.

*Cylindera (Ifasina) judy* is immediately recognizable among all other Asian *Ifasina* because it is immaculate and lacks any elytral spot, usually replaced by more or less well-inscribed, slightly raised blackish tracks. In this respect, it superficially recalls a bit the Indian endemic species *Jansenia prothymoides* (W. Horn, 1908). Contrary to this last, however, it has non-testaceous metallic labrum, a non-apically hooked aedeagus and an inner sac typical of the genus *Cylindera* (not *Jansenia*).

From *C. (I.) umbropolita* (W. Horn, 1905) and its subspecies *lucidinigrosa* Acciavatti & Pearson, 1989, which are also superficially much resembling to it, *C. (I.) judy* can be distinguished by the testaceous labrum instead of metallic and by the lack of the glossy black lateral elytral margins (ACCIAVATTI & PEARSON, 1989).

## References

- ACCIAVATTI, R.E. & D.L. PEARSON (1989). The tiger beetle genus *Cicindela* (Coleoptera, Insecta) from the Indian subcontinent. – *Annals of Carnegie Museum* **58**: 77–356, Pittsburgh.
- CASSOLA, F. (1991). Studi sui Cicindelidi. LXIII. I Cicindelidae (Coleoptera) dell'isola di Sulawesi, Indonesia. – *Annali del Museo Civico di Storia Naturale "G. Doria"* **88**: 481–664, Genova.
- CASSOLA, F. (in preparation). La collezione Fabio Cassola dei Coleotteri Cicindelidi del mondo (Coleoptera: Cicindelidae) del Museo Civico di Zoologia di Roma. (Studi sui Cicindelidi, CXCI) – *Naturalia Mirabilia*, Cataloghi del Museo Civico di Zoologia di Roma, Roma.
- CASSOLA, F. & D. BRZOSKA (2008). Collecting notes and new data on the tiger beetle fauna of Sulawesi, Indonesia, with description of fourteen new taxa. – *Annali del Museo Civico di Storia Naturale "G. Doria"* **100**: 1–110, Genova.
- JEANNEL, R. (1946). Faune de l'Empire Français. VI. Coléoptères Carabiques de la Région Malgache (Première Partie). – Office de la Recherche Scientifique Coloniale, 1-372, Paris.
- NAVIAUX, R. (1995). Les *Collyris* (Coleoptera Cicindelidae). Rèvision du genre et description de nouveaux taxons. – Société linnéenne de Lyon, 1-290, Lyon.
- RIVALIER, E. (1950). Démembrement du genre *Cicindela* Linné (Travail préliminaire limité à la faune paléarctique). – *Revue française d'Entomologie* **17**: 217–244, Paris.

WIESNER, J. (1992). Verzeichnis der Sandlaufkäfer der Welt. Checklist of the Tiger Beetles of the World (Coleoptera, Cicindelidae). – Verlag Erna Bauer, 1-364, Keltern.

### **Addresses of the authors**

Fabio CASSOLA (Correspondant author)  
Via F. Tomassucci 12/20  
00144 Rome  
ITALY  
e-mail: [fabiocassola@alice.it](mailto:fabiocassola@alice.it)

David BRZOSKA  
2740 Island Pond Lane  
Naples, Florida 34119  
U.S.A.

# ZOBODAT - [www.zobodat.at](http://www.zobodat.at)

Zoologisch-Botanische Datenbank/Zoological-Botanical Database

Digitale Literatur/Digital Literature

Zeitschrift/Journal: [Mitteilungen des Internationalen Entomologischen Vereins](#)

Jahr/Year: 2013

Band/Volume: [38\\_2013](#)

Autor(en)/Author(s): Cassola Fabio, Brzoska David

Artikel/Article: [A new \*Cylindera\* Species of the Subgenus \*Ifasina\* From Bali, Indonesia \(Coleoptera, Cicindelidae\) 1-5](#)