

Two new *Thopeutica* species from the Philippines (Coleoptera: Carabidae: Cicindelinae) ¹⁾

Jürgen WIESNER

Abstract: *Thopeutica* (*Thopeutica*) *anichtchenkoi* n. sp. is described from Mindanao, Mt. Apo. It is characterised by the metallic ground colour of the elytra and the stout shape of the aedeagus. *Thopeutica* (*Thopeutica*) *hinabanganensis* n. sp. is described from Samar, Central Visayas. It is characterised by the blackish green colour of the elytra, the shallow microsculpture of the elytra and the shape of the aedeagus.

Zusammenfassung: *Thopeutica* (*Thopeutica*) *anichtchenkoi* n. sp. aus Mindanao, Mt. Apo wird beschrieben. Das Taxon ist durch die Grundfarbe der Flügeldecken und die Form des Aedeagus charakterisiert. *Thopeutica* (*Thopeutica*) *hinabanganensis* n. sp. aus Samar, Central Visayas wird beschrieben. Das Taxon ist durch die schwarzgrüne Farbe der Flügeldecken, deren feine Microsculptur und die Form des Aedeagus charakterisiert.

Key words: Tiger beetles, Carabidae, Cicindelinae, *Thopeutica*, new species, Philippines.

Introduction

The genus *Thopeutica* Chaudoir, 1861 is represented in the Philippines by two subgenera, *Thopeutica* s.str., with 23 species, and *Philippiniella* Cassola & Ward, 2004 with four species. *Thopeutica* s.str. is distinguished by its long legs, antennomere 5 longer than 4, and a metallic labrum that is 3 to 4 times as wide as long. *Philippiniella* is distinguished by its short legs, antennomere 4 and 5 subequal, and a metallic labrum that is 1.5 to 3 times as wide as long

¹⁾ 122. Contribution towards the knowledge of Cicindelinae.

In recent years, collectors in the Philippeans have discovered numerous new tiger beetle species. Recently specimens of two *Thopeutica* species, members of *Thopeutica* s.str., in my collection and that of Alexander ANICHTCHENKO and Riccardo SCIAKY were determined to be species new to science and are described herein.

Results

Thopeutica (Thopeutica) anichtchenkoi n. sp.

(Figs 1–6)

Holotype (♂) PHILIPPINES, Mindanao, Mt. Apo, i.2011, Noel MOHAGAN leg.. SMNS, Staatliches Museum für Naturkunde, Stuttgart, Germany (at present in coll. WIESNER).

Paratypes: 12 ♂ and 3 ♀, l. c., SMNS, Staatliches Museum für Naturkunde, Stuttgart, Germany (at present in coll. WIESNER); 1 ♂ PHILIPPINES, Mindanao, Tamayong, Davao, iii.2014, in coll. A. ANICHTCHENKO, Daugavpils, Latvia; 1 ♂ l. c., 1 ♂ PHILIPPINES, Mindanao, South Cotabato, ii.2014, 1 ♂ Masara, Compostela Valley, iv.2014, 1 ♀, l. c., Bukidnon, Cabanglasan, viii.2014, in coll. R. SCIAKY, Milano, Italy.

Diagnosis: *Thopeutica (Thopeutica) anichtchenkoi* (Fig. 1), based on the extremely inflation after base of the aedeagus, is a member of stem 5 of the *stenodera*-group (CASSOLA & WARD 2004: 10). However, in contrast to all other members of this stem, this new species has a metallic coloured elytral surface, a characteristic usually associated with the members of *Philippiniella*. The new species differs from *Philippiniella* species by shape of labrum, antennomeres and legs.

Description

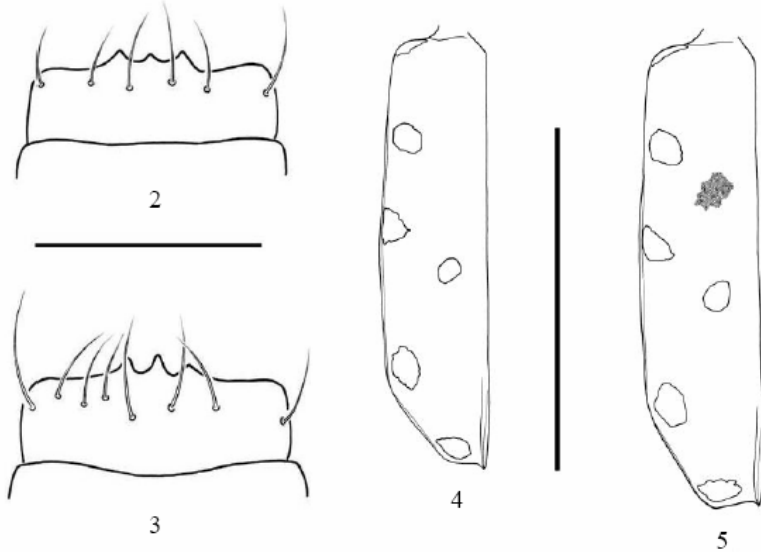
Total length (without labrum) 9.4 mm–10.8 mm, (mean=10.1 mm, n=21).

Head: fully glabrous, with two orbital setae, darkbronze above, greenish on clypeus and genae; vertex distinctly depressed between the eyes, with two shallow pits anteriorly, surface generally covered with longitudinal, slightly wavy striae. Labrum (Figs 2 and 3) metallic green, somewhat brownish in front, with six to eight setae, 3.5 times wider than long, tridentate in front. Mandibles testaceous at base, narrowly darkened on teeth, with green metallic reflections in the darkened area. Labial and maxillary palpi testaceous, with the terminal segment almost fully dark.



Fig. 1: *Thopeutica (Thopeutica) anichtchenkoi* n. sp.: habitus holotype male, scale = 5 mm; detail aedeagus holotype, lateral view, scale = 1 mm.

Antennae slender, extending back to the middle dot of the elytra in males, a little shorter in females; scape and second antennomere metallic green, glabrous, a single setigerous puncture on tip of scape; third and fourth antennomeres rufescent, with metallic green reflections apically, antennomeres 5–11 dark, nearly black, finely and evenly pubescent.



Figs 2–5: *Thopeutica (Thopeutica) anichtchenkoi* n. sp.: 2) labrum holotype male; 3) labrum paratype female; 4) left elytron, holotype male, scale = 5 mm; 5) left elytron, paratype female, scale = 5 mm.

Thorax: pronotum glabrous, as long as wide, deeply constricted in front and at back, globose between; metallic green and transversely wrinkled in front, shiny metallic green at back, between the constrictions dark green laterally and dark coppery above, transversely wrinkled besides the fine middle line. Sterna and episterna dark greenish-black, glabrous; Mesepimera of females glabrous with deep longitudinal coupling sulcus.

Elytra (Figs 4 and 5): wider than head and eyes together, parallel-sided, slightly enlarged in the middle, with small, shallow, roundish metallic green punctures becoming lighter towards the apex; colour blackish, with metallic greenish reflections especially on the apical half; female with mirror spot mesally. The elytral markings consist of six dots: a roundish humeral, subhumeral, mesal and subapical dot, a triangulare middle

dot and a transverse apical dot. Elytral apex with microserration and sutural spine. Epipleura dark with metallic green reflections.

Ventral aspect: abdomen metallic green, sterna and mesepisterna densely pubescent. Trochanteres brown. Legs dark brown with metallic green reflections and a few rows of spiniform setae.

Aedeagus (Fig. 6): 3.5 mm long, much inflated after base, tip elongated and forming a tiny hook.

Etymology: The new species is dedicated to Alexander ANICHTCHENKO, coordinator of www.carabidae.org, who brought this interesting new species to my attention.

Distribution: Mindanao: Bukidnon, Cotabato, Davao del Sur, South Cotabato and Compostela Valley.

***Thoepatica (Thoepatica) hinabanganensis* n. sp.**

(Figs 6–10)

Holotype (♂) PHILIPPINES, Central Visayas, Samar, Hinabangan, vi.2014. SMNS, Staatliches Museum für Naturkunde, Stuttgart, Germany (at present in coll. WIESNER).

Paratypes: 1 ♀, l. c., SMNS, Staatliches Museum für Naturkunde, Stuttgart, Germany (at present in coll. WIESNER); 1 ♂ 1 ♀ l. c. in coll. R. SCIAKY, Milano, Italy; 1 ♂ 2 ♀ PHILIPPINES, Central Visayas, Samar, Hinabangan, vii.2014; 1 ♂ l. c., viii.2014, in coll. R. SCIAKY, Milano, Italy.

Diagnosis: *Thoepatica (Thoepatica) hinabanganensis*, in the key of CASSOLA & WARD 2004: 13, will key out at *Th. milanae* Wiesner, 1992. From this species it differs by the short knobbed tip of the aedeagus, the blackish green colour of the elytra and the shallow microsculpture of the elytra, showing small punctures that are isolated and generally not connected with others.

Description

Total length (without labrum) 7.4 mm–8.9 mm, (mean=8.1 mm, n = 8).

Head: fully glabrous, with two orbital setae, greenish, blackish green or violet above, greenish on clypeus and genae; vertex distinctly depressed between the eyes, with two shallow bumps anteriorly, surface generally covered with longitudinal, slightly wavy striae. Labrum (Figs 7 and 8) 2.8 to 3.2 times wider than long, tridentate in front, metallic green, brownish in the tridentate area, with 6 submarinal and 2 mesal setae. Mandibles testaceous at base, darkened on teeth.

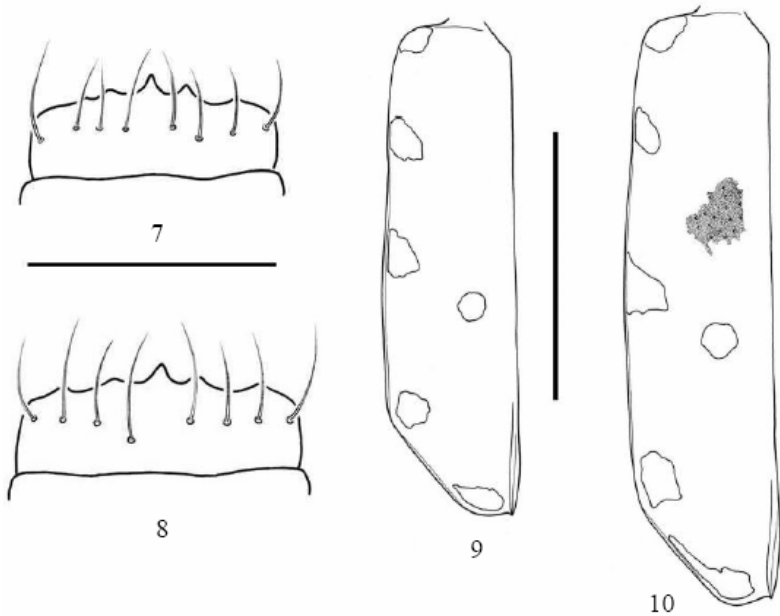


Fig. 6: *Thopautica (Thopautica) hinabanganensis* n. sp.: habitus holotype male, scale = 5 mm; detail aedeagus holotype, lateral view, scale = 1 mm.

Labial and maxillary palpi testaceous, with the terminal segment almost fully brownish with metallic reflections.

Antennae slender, extending back to the middle dot in males, a little shorter in females; scape metallic green, glabrous, a single setigerous puncture on tip of scape; second, third and fourth antennomeres rufescent, with metallic green reflections, antennomeres 5–11 brownish, finely and evenly pubescent.

Thorax: pronotum glabrous, wider than long, deeply constricted in front, shallower at back, globose between; metallic blackish green, blue or violet, with coppery reflections at posterolateral angles, transversely wrinkled. Sterna and episterna dark greenish-black, glabrous. Mesepimera of females glabrous with a very deep pitch back of the middle.



Figs 7–10: *Thopeutica (Thopeutica) hinabanganensis* n. sp.: 7) labrum holotype male; 8) labrum paratype female; 9) left elytron, holotype male, scale = 2.5 mm; 10) left elytron, paratype female, scale = 2.5 mm.

Elytra (Figs 9 and 10): wider than head and eyes together, nearly parallel-sided, with small, shallow, roundish metallic green or blue punctures becoming lighter towards the apex; ground colour blackish, female

with shining black mirror spot mesally. The elytral markings consist of six dots: each roundish humeral, subhumeral, mesal and subapical dot, a triangulare middle dot and a transverse apical dot. Elytral apex with microserration and retracted sutural spine. Epipleura dark brown.

Ventral aspect: abdomen metallic green, sterna densely pubescent. Trochanteres brown. Legs dark brown, femora with metallic green reflections and a few rows of spiniform setae.

Aedeagus (Fig. 6): 2.6 mm long, tapering, with a short knobbed tip.

Etymology: The new species is named after its collection site, Hinabangan in Central Visayas, Samar province.

Distribution: Samar: Samar province, Hinabangan.

Remarks: CASSOLA & WARD 2004: 19 provided drawings of the aedeagi of specimens of *Th. milanae* from Mindanao and Luzon that conspicuously deviate from the ones from Leyte. Some of these specimens likely represent distinct species, and further investigations in the future may show that the distribution of *Th. milanae* is restricted to Leyte.

Acknowledgements

The author is indebted to Alexander ANICHTCHENKO and Riccardo SCIACKY for the opportunity to study the material, Peter SCHÜLE for the pictures and to Prof. David L. PEARSON for revising the English text.

Reference

CASSOLA, F.- & WARD, R. D. (2004): Systematics and zoogeography of the Philippine species of the genus *Thopeutica* Chaudoir, 1861. – *Annali del Museo Civico di Storia Naturale di Genova* **96**: 1–32.

Author

Jürgen WIESNER
Dresdener Ring 11
D-38444 Wolfsburg, Germany
E-Mail: juergen.wiesner@wolfsburg.de

ZOBODAT - www.zobodat.at

Zoologisch-Botanische Datenbank/Zoological-Botanical Database

Digitale Literatur/Digital Literature

Zeitschrift/Journal: [Mitteilungen des Internationalen Entomologischen Vereins](#)

Jahr/Year: 2015

Band/Volume: [40 2015](#)

Autor(en)/Author(s): Wiesner Jürgen

Artikel/Article: [Two new Thopeutica species from the Philippines \(Coleoptera: Carabidae: Cicindelinae\) 1-8](#)