

A new Tiger Beetle species from Sabah, Borneo (Coleoptera: Carabidae: Cicindelinae)¹

Jürgen WIESNER

Abstract: *Neocollyris (Neocollyris) goerni* n. sp. is described. It is distinguished by the abruptly-angled shape of the aedeagus, which is unique within the genus.

Zusammenfassung: *Neocollyris (Neocollyris) goerni* n. sp. wird beschrieben. Sie ist durch einen abrupt gewinkelten Umriss des Aedeagus charakterisiert, der einzigartig innerhalb der Gattung ist.

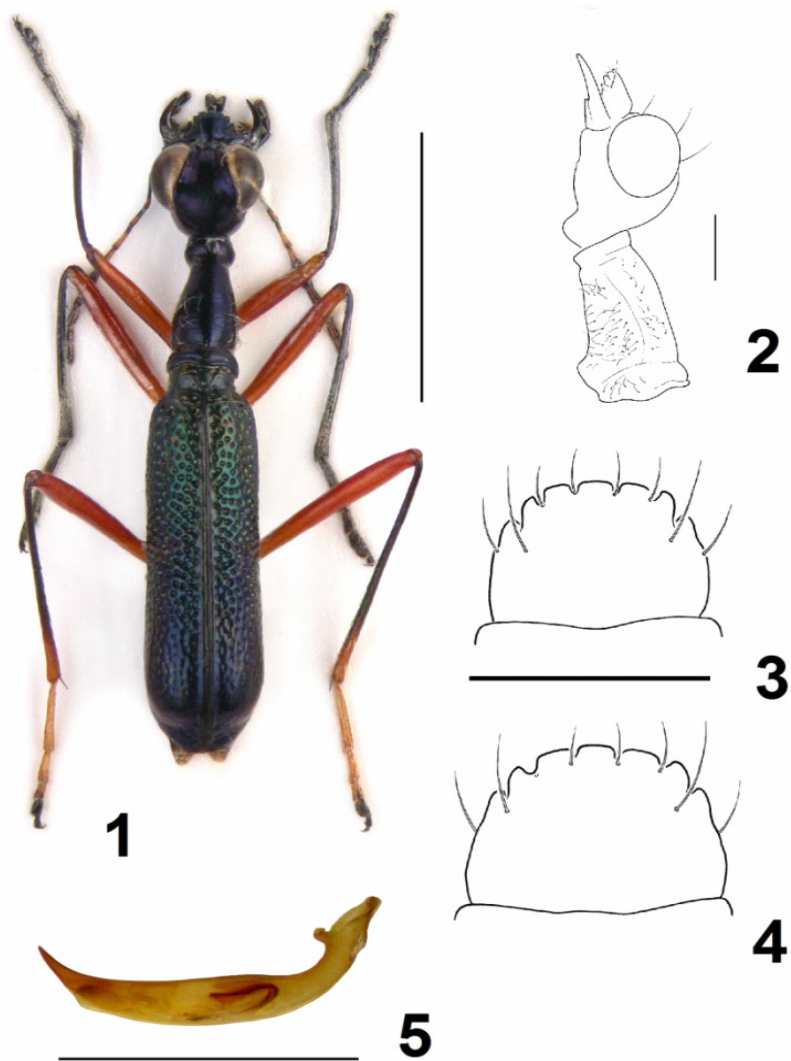
Key words: Carabidae, Cicindelinae, *Neocollyris*, new species, Sabah, Borneo.

Introduction

Fourteen species and one subspecies of the tiger beetle genus *Neocollyris* Horn, 1901, subgenus *Neocollyris* are known to occur in Borneo (NAVIAUX 1994, 2004, 2010; NAVIAUX & CASSOLA 2005). Recently, a new species of this subgenus was discovered by Sebastian GÖRN in Sabah, raising the number of known species up to fifteen. The new species is described herein.

All fifteen species of the subgenus from Borneo are similar in total length (9 to 16 mm). A provisional key is given, using somewhat weak characters, like length of antennae, shape of labrum and colour of legs and elytra.

¹ 128th Contribution towards the knowledge of Cicindelinae



Figs 1-5: *Neocollyris (Neocollyris) goerni* n. sp.: 1) habitus holotype male, scale = 5 mm; 2) head and pronotum, lateral view; holotype male, scale 1 mm; 3) labrum holotype male, scale = 0.5 mm; 4) labrum paratype female, scale = 0.5 mm; 5) aedeagus holotype, scale = 1 mm.

Neocollyris (Neocollyris) goerni n. sp. (Figs 1-5)

Holotype (?): Malaysia, Borneo, Sabah, Kota Kinabalu, N 5.980184, E 116.078611, Sekundärwaldrand, 9.8.2015 leg. GÖRN; in coll. WIESNER (later SMNS, Staatliches Museum für Naturkunde, Stuttgart, Germany).

Paratype (?): same collecting data, in coll. GÖRN.

Diagnosis

N. (N.) goerni n. sp. is similar to *N. (N.) bonellii* (Guérin-Méneville, 1834), but the aedeagus is not uniformly curved with a shortly extracted tip. Instead it is abruptly angled with a shortly extracted tip. The distal part of the metatibiae is yellowish in *goerni* and black with blue reflections in *bonellii*.

Description

Head: Mandibles blackish brown with two teeth. Labrum (Figs 3, 4) dark blue, semicircular, wider than long, with seven blunt teeth and eight lateral setae. Palpi blackish brown. Antennae long, when extended back reaching the base of the pronotum; scape and joint two to six of antennae black with bluish reflections, joints three to six becoming more and more brownish yellow distally, while joint six is nearly complete brownish yellow; joints seven to eleven brownish. Head dark blue with violet reflections, vertex barely dilated in lateral view (Fig. 2), interocular excavation wide and nearly parallelsided.

Thorax: Pronotum dark, with blue green reflections, 2.1 times longer than wide, smooth, only with very few small wrinkles in the center, lateral sides with a lot of setae.

Elytra: Blue green, parallel sided in male, apical third slightly extended in female. Densely covered with deep pits, nearly absent at the apex, forming short transverse rows at the suture. Elytral apex with lateral angle, retracted at suture.

Ventral aspect: Venter dark blue. Femora reddish, tibiae and tarsi brown violet or blackish with blue reflections, apex of metatibiae and the first three joints of metatarsi yellowish. Sternum eight of female wrinkled and setose apically, with two central spines and rectangular lateral angles.

Aedeagus: (Fig. 5) 2.4 mm, slender, slightly curved, tip abruptly angled and shortly extracted.

Total length (without labrum) 11.3 mm - 12.5 mm, (mean=11.9 mm, n=2).

Etymology: The new species is dedicated to Sebastian GÖRN, the collector of this new species.

Provisional key to the *Neocollyris* (*Neocollyris*) from Borneo

1. Antennae short, not reaching the distal half of the pronotum; elytra blackish bronze; total length 13.5mm *diversa* Naviaux, 2010
- Antennae longer 2
- 2(1). Antennae reaching the base of the pronotum in males, a little shorter in females 3
- Antennae reaching distal half of pronotum 7
- 3(2). Medial tooth of labrum retreated; labrum black, center yellow; elytra bluish black or violaceous; total length 13mm-16mm *labiomaculata* (Horn, 1892)
- Medial tooth of labrum not retreated; labrum not black 4
- 4(3). Tibiae completely dark; elytra bright blue
..... *bonellii* (Guérin-Méneville, 1834)
- Metatibiae lighter distally 5
- 5(4). Labrum dark blue in both sexes; elytra blue green; total length 11.3mm-12.5mm *goerni* n. sp.
- Labrum violaceous in females, dark brown with lighter center in males 6
- 6(5). Elytra violaceous; total length 10.5mm-14.0mm
..... *dimidiatadimidiata* (Chaudoir, 1864)
- Elytra blue; total length 10.0mm-11.5mm
..... *dimidiata sabahensis* Naviaux, 2004
- 7(2). Medial tooth of labrum reduced; labrum black; elytra dull blue; total length 9.5mm *nishikawai* Naviaux, 2004
- Medial tooth of labrum not reduced 8
- 8(7). All teeth of labrum blunt 11
- Some or all teeth of labrum extracted and pointed 9
- 9(8). Median three teeth of labrum large and blunt, lateral four teeth small and pointed; elytra black; total length 12.0mm
..... *albitarsipennis* (Horn, 1925)
- All teeth of labrum pointed 10
- 10(9). Elytra golden brown; total length 11.5mm-15.0mm
..... *clavipalpis* (Horn, 1901)

- Elytra black, with green reflections; total length 14.6mm
..... *aeneicollis* Naviaux & Cassola, 2005
11(10). Tibiae and tarsi completely dark 14
-- Metatibiae lighter distally and basal three joints of metatarsi
lighter 12
12(11). Labrum blue; elytra blue; total length 11.6mm-13.4mm
..... *cruentata* (Schmidt-Goebel, 1846)
-- Labrum dark brown 13
13(12). Elytra black, with olivaceous or blue reflections; total
length 10.5mm-13.5mm *diardi* (Latreille, 1822)
-- Elytra greenish; total length 10.5mm
..... *chloroptera* (Chaudoir, 1860)
14(11). Basal joint of antennae reddish; elytra blue; total length
13.0mm-14.5mm *batesi* (Horn, 1892)
-- Basal joint of antennae blackish 15
15(14). Labrum semicircular and long; elytra bright blue; total
length 9.5mm-13.0mm *emarginata* (Dejean, 1825)
-- Labrum subquadrate, very long; elytra blue green; total length
11.0mm-14.5mm *rufipalpis* (Chaudoir, 1864)

Acknowledgements

The author is indebted to Sebastian GÖRN, Halle, Germany, for the opportunity to study the material, Peter SCHÜLE, Herrenberg, Germany, for the pictures and to Prof. David L. PEARSON, Tempe, Arizona, USA, for revising the English text.

References

- NAVIAUX, R. (1995): Les *Collyris* (Coleoptera Cicindelidae), révision des genres et description de nouveaux taxons. – Bulletin mensuel de la Société Linnéenne de Lyon, Separatum: 1–332; Periodicum: **63**(4): 106–116 (1994), **63**(5): 133–164 (1994), **63** (6): 185–216 (1994), **63**(7): 233–264 (1994), **63**(8): 273–304 (1994), **64**(1): 9–40 (1995), **64**(2): 57–88 (1995), **64**(3): 105–136 (1995), **64** 4): 153–184 (1995), **64**(5): 201–232 (1995), **64**(6): 259–290 (1995).
- NAVIAUX, R. (2004): Les *Collyris* (Coleoptera Cicindelidae), complément à la "Révision du genre *Collyris* (sensu lato)" et description de nouveaux taxons. – Bulletin mensuel de la Société Linnéenne de Lyon **73**(3): 55–142.

- NAVIAUX, R. & CASSOLA, F. (2005): Trois nouvelles espèces de *Collyris* (sensu lato) (Coleoptera, Cicindelidae). – Bulletin de la Société Entomologique de France **110**(1): 59–62.
- NAVIAUX, R. (2010): Espèces nouvelles des genres *Neocollyris* Horn, 1901, et *Collyris* Fabricius, 1801 (Coleoptera, Cicindelidae). – Bulletin de la Société Entomologique de France **115**(3): 311–324.

Author:

Jürgen WIESNER
Dresdener Ring 11
D-38444 Wolfsburg, Germany
e-Mail: juergen.wiesner@wolfsburg.de

ZOBODAT - www.zobodat.at

Zoologisch-Botanische Datenbank/Zoological-Botanical Database

Digitale Literatur/Digital Literature

Zeitschrift/Journal: [Mitteilungen des Internationalen Entomologischen Vereins](#)

Jahr/Year: 2016

Band/Volume: [41_2016](#)

Autor(en)/Author(s): Wiesner Jürgen

Artikel/Article: [A new Tiger Beetle species from Sabah, Borneo \(Coleoptera: Carabidae: Cicindelinae\) 33-38](#)