

14. Stackelberg, A. v., Faune URSS. (Ac. Sci. Leningr.) v. 1 (Culic.) 1927.
15. Vogel, R., Int. Rev. Hydrobiol. v. XXI nr. 3—4 p. 161—170, 1928.
16. Wesenberg-Lund, C., Danske Vidensk. Selsk. Skrifter, Nat. og Math. Afd., 8. Raekke v. VII nr. 1 p. 1—210, 1921.

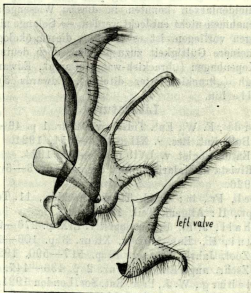
A new Metarbelid. (Lep.)

By A. J. T. Janse, D. Sc., Pretoria.

(With 1 figure.)

Metarbela heringi nov. spec.

Male. Head, shaft of antennae, palpi, thorax, abdomen, ground colour of both wings on upper and underside tawny-olive (XXIX); palpi, head and abdomen densely irrorated with fuscous-black (XLVI) hairs; thorax on upperside densely irrorated with black and



Metarbela heringi n. sp. Left valve, 38×.

silvery white hairs mixed; pectinations of antennae fuscous-black. Forewing on upperside at base with a pear-shaped silvery white band from upper median to vein 2 where it is pointed,

then more curved and comes back to base again, crossing 1b and then remaining below that vein; a triangular silvery white mark beyond it below vein 2 till near tornus; the pear-shaped band is heavily scaled with fuscous-black scales, forming a narrow dark edging on inner side and a similar circular edging on outside near and including the triangular white mark; a triangular silvery white mark at upper angle of cell, also edged with fuscous-black at lower part; an indistinct post-medial line of white scales, edged outwardly by some fuscous-black scales, dentate outwardly at most veins and deeply incurved between veins 3 and 2; costa from middle to apex with white scaling on which three maculae of ground colour; a white broad scaling and irroration at termen from near apex to vein 3, with a fuscous-black irroration between the veins on inner side, but leaving a fuscous-black dotted line on termen; cilia of groundcolour, leaving at base a tawny-olive line and tinged with fuscous beyond; maculae of white scales between the veins. Hind wing uniformly irrorated with fuscous-black; cilia tipped with fuscous-black except for some white scales between the veins, leaving a basal line of groundcolour.

Underside: — fore wing and hind wing as in hind wing above.

Genitalia: — Uncus broad and bifid; sternite very narrow; valves with two lobes, upper lobe about three times longer than lower lobe, almost strait, narrow and slightly curved at tip; lower lobe short, curved and sharply pointed; penis about the length of the upper lobe but much thicker, especially at base, simple. Exp. 27 mm.

Hab. Windhoek (South West Africa), received from M. Zobrys. Holo-type in Berlin Zoological Museum, kindly communicated to me by Dr. M. Hering, after whom I have much pleasure naming this species; para-type in collection Janse, kindly presented to me by the Museum and from which the genitalia were prepared.

The hind legs of both specimens are unfortunately missing, but I feel sure that the species will prove to have four spurs. A curious thing is, that the para-type had both fore wings without an areole, but the holo-type has a normal areole on both wings. This again shows how inconstant venation may be and how the gravest mistakes can be made, if venation forms the sole basis of classification. The genitalia are very typical for *Metarbela*, being very close to those of *M. meridialis* Karsch but from which it differs in the upper lobe of the valve being longer and more straight and the lower lobe being curved downwards instead of upwards as in *M. meridialis*. In general appearance as well as in genitalia it comes very near to *M. iridescens* Janse, but the uncus is more developed and bifid and the lobes of the valves are different in shape.

ZOBODAT - www.zobodat.at

Zoologisch-Botanische Datenbank/Zoological-Botanical Database

Digitale Literatur/Digital Literature

Zeitschrift/Journal: [Mitteilungen der Deutschen Entomologischen Gesellschaft, E.V.](#)

Jahr/Year: 1930

Band/Volume: [1](#)

Autor(en)/Author(s): Janse A.J.T.

Artikel/Article: [A new Metarbelid. \(Lep.\) 60-61](#)

