

The Sarmatian/Pannonian boundary at the western margin of the Vienna Basin (City of Vienna, Austria)

Mathias HARZHAUSER^{1*)}, Oleg MANDIC¹⁾, Matthias KRANNER¹⁾, Petra LUKENEDER¹⁾, Andrea K. KERN²⁾, Martin Gross³⁾, Giorgio CARNEVALE⁴⁾ & Christine JAWECKI⁵⁾

¹⁾ Geological-Paleontological Department, Natural History Museum, Vienna, Burgring 7, 1010 Vienna, Austria; mathias.harzhauser@nhm-wien.ac.at; oleg.mandic@nhm-wien.ac.at; petra.lukeneder@gmx.at;

²⁾ Department of Sedimentary and Environmental Geology, University of São Paulo, Rua do Lago 562, São Paulo 05508-080, Brazil; annkern@usp.br;

³⁾ Universalmuseum Joanneum, Department for Geology & Palaeontology, Weinöttlstraße 16, 8045 Graz, Austria; martin.gross@museum-joanneum.at;

⁴⁾ Università degli Studi di Torino, Dipartimento di Scienze della Terra, Via Valperga Caluso, 35, 10125 Torino, Italy; giorgio.carnevale@unito.it;

⁵⁾ Magistratsabteilung 29, Brückenbau und Grundbau, Wilhelminenstraße 93, 1160 Vienna, Austria; christine.jaweck@wien.gv.at;

^{*} Corresponding author: mathias.harzhauser@nhm-wien.ac.at



KEYWORDS

Vienna Basin; Miocene; Paratethys Sea; Lake Pannon; authigenic pyrite

Abstract

Sarmatian and Pannonian cores, drilled at the western margin of the Vienna Basin in the City of Vienna, reveal a complex succession of marine and lacustrine depositional environments during the middle to late Miocene transition. Two Sarmatian and two Pannonian transgressive–regressive sequences were studied in detail. Identical successions of benthic faunal assemblages and similar patterns in magnetic susceptibility logs characterise these sequences. This allows a correlation of the boreholes over a distance of ~3.5 km across one of the major marginal faults of the Vienna Basin. Biostratigraphic data, combined with rough estimates of sedimentation rates, reveal large gaps between these sequences, suggesting that only major transgressions reached this marginal area. In particular, during the Sarmatian–Pannonian transition, the basin margin completely emerged and turned into a terrestrial setting for at least 600 ka.

1. Introduction

The Sarmatian/Pannonian boundary around 11.6 Ma coincided with the largest biotic crisis in the Central Paratethys Sea resulting from its geographic isolation and transition into a lacustrine setting (Harzhauser and Piller, 2007). A plethora of papers deals with the stratigraphy and ecology of the Sarmatian Sea and Lake Pannon around this critical phase (e.g. Magyar et al., 1999; Harzhauser and Piller, 2004; Sztanó et al., 2005; Vasiliev et al., 2010; Lirer et al., 2009; Filipescu et al., 2011; ter Borgh et al., 2013; Neubauer et al., 2016). Due to the limited extent of Lake Pannon during its initial phase, continuous sedimentary records spanning the Sarmatian/Pannonian transition are a priori restricted to basinal settings, whereas the marginal areas have been exposed to erosion (see maps in Magyar et al., 1999). While much effort has been previously and is being currently made to identify continuous records, the ubiquitous gaps have attracted no attention so far. Defining the duration of these phases of erosion and non-deposition, however, is crucial to describe basin development on a regional scale, leading to a better understanding of the palaeo-topography and improvement of the temporal resolution of the regional tectonic history.

Herein, we focus on a series of rises in sea/lake levels and depositional gaps recorded by siliciclastic-dominated successions along the western margin of the Vienna Basin within the territory of the City of Vienna. First observations on the geological situation of the Sarmatian and Pannonian strata in Vienna were made in the late

19th and early 20th centuries, when numerous outcrops existed in the city (e.g. Karrer, 1877; Schaffer, 1906). Since these outcrops soon disappeared under buildings, Tauber (1939a, b) was among the last geologists who discussed the Sarmatian/Pannonian boundary in Vienna based on surface outcrops. At that time, most geologists postulated a so-called transitional zone, in which Sarmatian and Pannonian species co-occur, because reworking of Sarmatian shells was neglected due to their often-excellent preservation (Tauber, 1939a, b). Since then, the Sarmatian and Pannonian successions along the western margin of the Vienna Basin received little attention, and the official geological maps show only very general subdivisions into “Sarmatian” and “Pannonian” for Vienna (Fuchs, 1985; Schnabel et al., 2002). Now, new information has become available during the planning stage of the construction of new underground networks, allowing a precise description of Sarmatian and Pannonian depositional environments, biostratigraphy and depositional gaps.

2. Geographical and geological setting

In 2014, the municipal department MA 29 drilled several boreholes within the City of Vienna (Austria) during the planning phase of subway constructions. Herein, we focus on two groups of boreholes: the first group comprises drillings in the 9th, 17th and 18th districts, forming a west-southwest WSW-ENE transect close to the western margin of the Vienna Basin

(rotary kelly bushing RKB 5320, RKB 5300, RKB 5260; Fig. 1). Tectonically, the boreholes are situated at the basin margin, west of the Bisamberg and Leopoldsdorf faults (Fig. 1). The second group of drillings is situated in the 5th and 6th districts and roughly forms a northwest NNW-southeast SSE transect crossing the Wien river valley (RKB 7260, RKB 7280, RKB 7300, RKB 7320; Fig. 1). Tectonically, these drillings are situated within the Vösendorf Basin, a small, roughly southwest SSW-northeast NNE trending depression separating the basin margin from the Mödling Block to the south and southeast and the Oberlaa High to the east (Fig. 1; Kröll and Wessely, 1993; Wessely, 2006).

The Sarmatian part of the RKB cores is part of the upper Sarmatian Skalica Formation as defined by Elečko and Vass (2001). This formation is widespread throughout the Vienna Basin and the adjacent Eisenstadt–Sopron Basin. Elečko and Vass (2001) named the formation after the town Skalica in the Slovak Republic. Its type section is the Vrádište-2 well (154–5 m) at Holíč in the Slovak Republic. Informal names for this formation used for deposits within the area of Vienna are “Cerithiensichten” (Beds with cerithiids) (Suess, 1866) and “Atzgersdorfer Schichten” (Beds of Atzgersdorf) (Brix, 1988). Outcrops of the Skalica Fm. usually expose a variety of lithologies, ranging from marl and silt to sandstone and gravel, as well

as mixed siliciclastic-carbonatic deposits, such as oolites and rock-forming coquinas (= Beds of Atzgersdorf). The predominantly pelitic deposits of the RKB cores represent a more distal, basinal facies of the Skalica Fm.

The pelitic Pannonian units of the RKB cores represent lower parts of the Bzenec Formation, as defined by Čtyroký (2000) and Harzhauser et al. (2004). Čtyroký (2000) defined this formation for the lacustrine deposits of Lake Pannon in the Czech part of the Vienna Basin. The type section comprises the Kyj-1 and Kyj-2 wells in the lignite mine Pokrok, near the village Žeravice at Kyjov in the Czech Republic. Informal names for this formation used for deposits within the area of Vienna are “Congerienschichten” (Beds with *Congeria*), “Brunner Schichten” (Beds of Brunn) (Krenmayr and Schnabel, 2002) and “Inzersdorfer Tegel” (Clay of Inzersdorf) (Brix, 1988). No outcrops of the lower part of the Bzenec Fm. are currently exposed near or in Vienna. The famous outcrops at Hennersdorf, south of Vienna, represent the upper parts of the Bzenec Fm (Kern et al., 2012a, 2012b).

3. Materials and methods

All boreholes reached a final depth of 60 m and were fully cored (Fig. 2). The cores are stored in wooden boxes of 1-m length and are available for sampling in the core shed of the municipal department MA 29. The boreholes

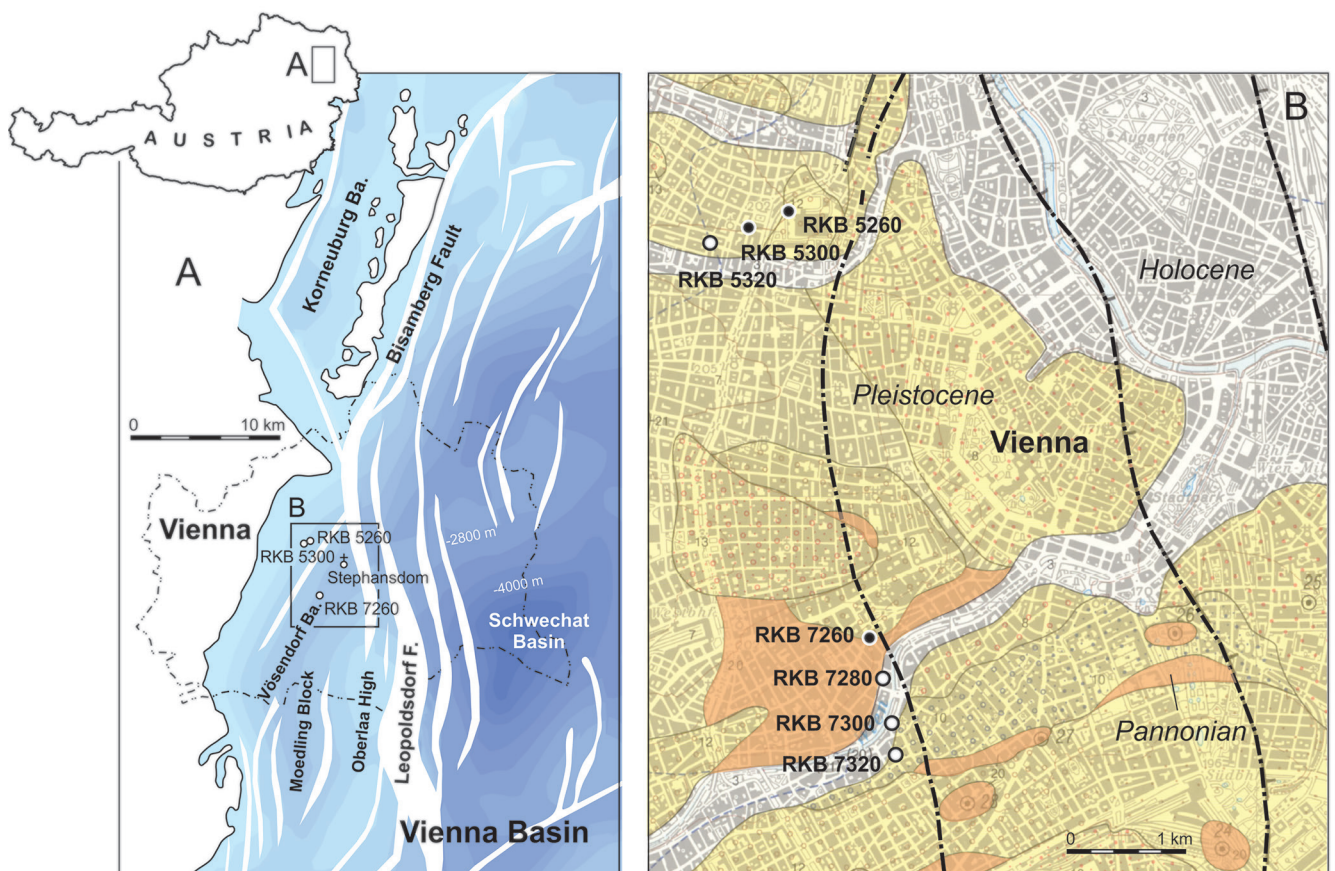


Figure 1: Geologic setting of the investigation area. A: Structural map of the pre-Neogene basement of the Vienna Basin (VB) after Kröll and Wessely (1993) and Wessely (2006), with the position of the boreholes at the western margin of the VB and in the Vösendorf Basin. B: Position of the boreholes plotted on the geological map of Fuchs (1985), black lines represent faults.

The Sarmatian/Pannonian boundary at the western margin of the Vienna Basin (City of Vienna, Austria)

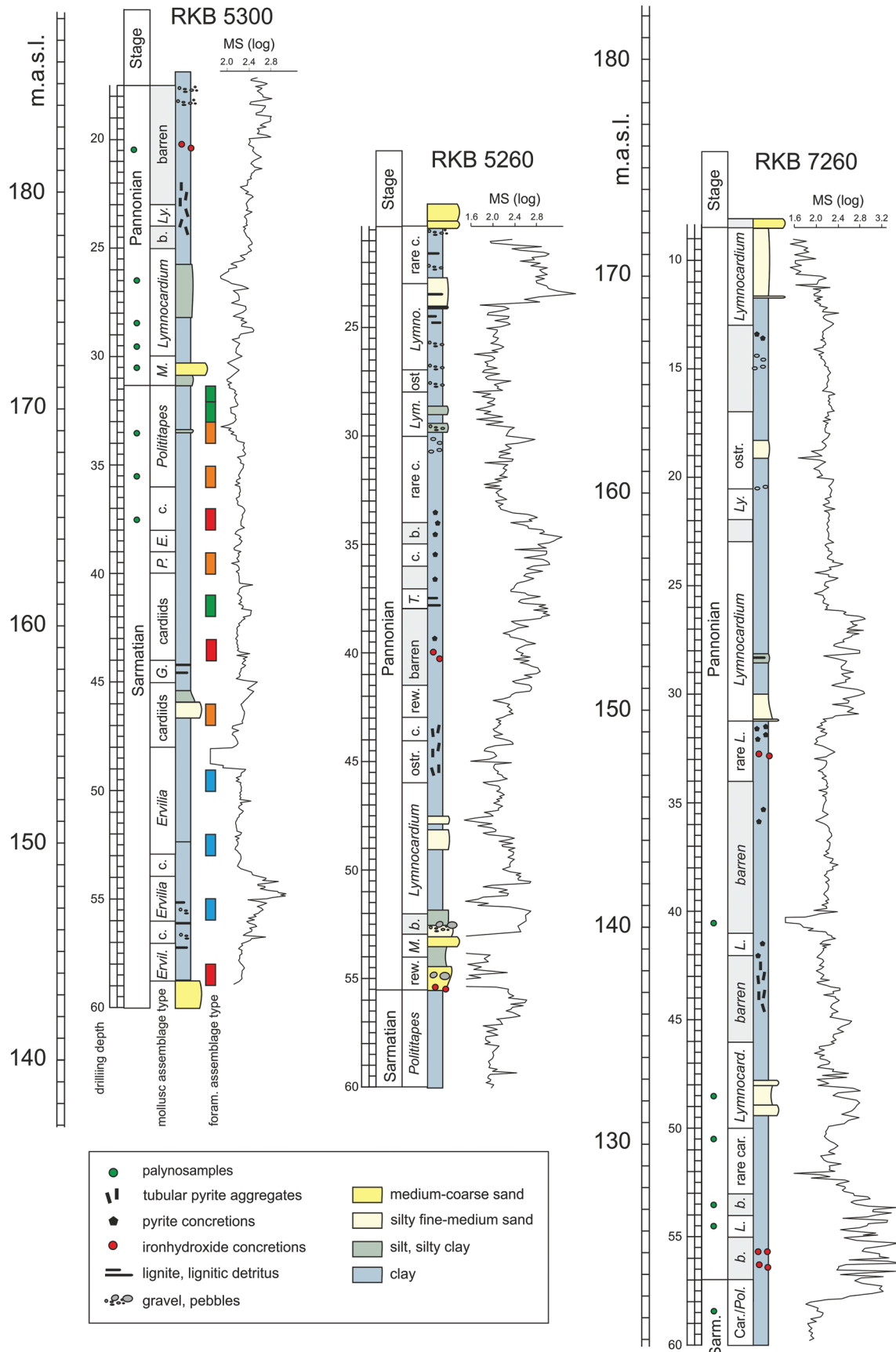


Figure 2: Simplified lithological logs of the cores; position in metres above sea level. Sample numbers in text correspond to core metres. Dominant mollusc and foraminiferal assemblage types are indicated next to the litho-log, along with magnetic susceptibility values. Abbreviations: b. = barren of macrofossils, rew. = reworked Sarmatian shells, ostr. = ostracod mass occurrences, C. = cardiids, E. = *Ervilia dissita*, G. = *Granulolabium binctum*, L. = Lymnocardiidae, M. = *Melanopsis pseudonarzolina*, P. = *Polititapes tricusps*, T. = *Theodoxus* sp.; the colour code of the foraminiferal assemblages follows the colour code of the clusters in Fig. 6.

penetrated the Sarmatian/Pannonian boundary, and most of them drilled through a Holocene/anthropocene cover of ~ 6–20 m thickness. In an internal report of the municipal department MA 29, a preliminary biostratigraphic analysis tried to define the Sarmatian/Pannonian boundary in the cores (Maslo, 2015). Sedimentology and sedimentary structures were documented by the drilling company; these data were made available to us by the municipal department MA 29. Within this project, three cores were sampled to define the Sarmatian/Pannonian boundary in more detail based on palaeontological data:

- RKB 7260 (Margaretenstraße 108, 1050 Vienna; N 48.196074°, E 16.352512°)
- RKB 5300 (Theresiengasse 34, 1080 Vienna; N 48.220493°, E 16.341733°)
- RKB 5260 (rescue parking place in the Vienna General Hospital, AKH, 1090 Vienna; N 48.221543°, E 16.345415°)

The distance between RKB 5300 and 5260 is ~300 m, whereas the southern borehole RKB 7260 is at a distance of ~3.5 km (Fig. 1). Samples were taken from the middle of each core meter, excluding Holocene and anthropocene units. Each sample was treated with diluted H₂O₂ for several hours and, afterwards, washed with tap water and sieved through a set of standard sieves. Foraminifers and ostracods were picked and counted (Appendix 1). Additionally, gastropods, bivalves, serpulids and otoliths were collected for supplementary palaeo-ecological and biostratigraphical information. Foraminifers were quantitatively analysed, whereas only presence/absence was evaluated for all other taxa (Appendix 2).

Palynological samples were selected from cores RKB 5300 and RKB 7260 and processed at the Austrian Geological Survey. Each sample (10 g) was processed following the steps of Faegri and Iversen (1989) by using concentrated HCl and hydrofluoric acid to dissolve all carbonates and silicates. Furthermore, all samples were sieved through a 6 µm nylon sieve to remove small organic matter before non-permanent slides were prepared for counting under the light microscope. From each sample, 300 pollen grains were identified (excluding the dominant *Pinus* spp.) using several atlases, such as Klaus (1984), Planderova (1990) and Stuchlick et al. (2001; 2002; 2009; 2014). Climatic analysis followed all suggestions and techniques of the Co-existence Approach (Mosbrugger and Utescher, 1997; Utescher et al., 2014). Based on the nearest-living-relative principle, this method assumes a climatic range of a fossil plant taxon based on the climatic range of its nearest living relative. The climatic ranges of each taxon from the fossil assemblage are overlain to define a climatic interval in which all of the nearest living relatives could co-exist. If such a co-existence interval is present, the climatic range represents the hypothetical climate of the past. In total, seven climatic parameters for temperature and rainfall were reconstructed, which are the mean annual temperature (MAT), coldest month temperature (CMT) and warmest month temperature (WMT), as well as mean annual precipitation (MAP), precipitation

of the wettest month (MPwet), precipitation of the driest month (MPdry) and precipitation of the warmest month (MPwarm) (Appendix 3).

During the sampling process, measurements of magnetic susceptibility (MS) were taken on site using an “SM-20” magnetic susceptibility meter with a sensitivity of 10⁻³ SI units (GF Instruments, Brno, Czech Republic). The measurements are presented as log-transformed values for better visualization of the patterns (Fig. 2). These measurements were done to detect potential similarities in wire-log patterns for core correlations. Herein, we are not interpreting the MS values in terms of sedimentary environments; for a discussion on the interpretation of MS values in Lake Pannon deposits, see Kern et al. (2012a).

The diversity indices ‘Dominance’ and ‘Equitability’ were computed based on the specimen counts using the software PAST (Hammer et al., 2001). Dominance ranges from zero (all taxa are equally present) to one (one taxon dominates the community completely), and equitability measures the evenness with which specimens are divided among the taxa present (Harmer and Harper, 2006; Hammer et al., 2001).

4. Results

4.1 Macrofossils and lithology

Apart from barren intervals in the Pannonian cores, molluscs occur throughout the cores as scattered shells and rarely as thin coquina layers. Due to sediment compaction, the coring technique and the washing procedure, bivalve shells – and especially the fragile cardiid shells – are generally strongly fragmented.

RKB 5300 starts with a unit (~1-m thickness) of medium sand with gravel intercalations and mollusc coquinas. Upsection follows a rather uniform 12-m-thick unit of greenish-grey clay and silt, with dispersed lignitic plant debris and gravel stringers in the basal part. This part of RKB 5300 (samples 5300-59/58 to 5300-48/47) is characterised by *Ervilia*-cardiid assemblages with large numbers of *Ervilia dissita*, *Inaequicostata politioanei* and *Chartocardium carasi*, along with *Musculus sarmaticus* and *Obsoletiforma vindobonense* (Fig. 3). Gastropoda, such as “*Valvata*” *soceni wiesenensis*, and Hydrobiidae are most frequent in the lower part of this unit. Similarly, tubes of the polychaete *Spirorbis bilineatus* are moderately frequent, present only in samples RKB 5300-59/58 and 5300-57/56 (Fig. 3). Otoliths of the small-sized cod *Paratrisopterus caspius* are also only found in this basal part (RKB 5300-58/57) (Fig. 3). A sandy and silty unit occurs from 45.9 to 46.6 m, followed by lignitic silt/clay up to 44 m; in the corresponding samples RKB 5300-47/46 to 5300-45/44, *Ervilia* declines and cardiiids predominate the assemblages. Among the gastropods, *Granulolabium bicinctum* and *Acteocina lajonkaireana* become frequent. Cardiid-dominated assemblages with low amounts of gastropods such as *Retusa* sp. and *Acteocina lajonkaireana* appear again in the following clay/silt interval up to

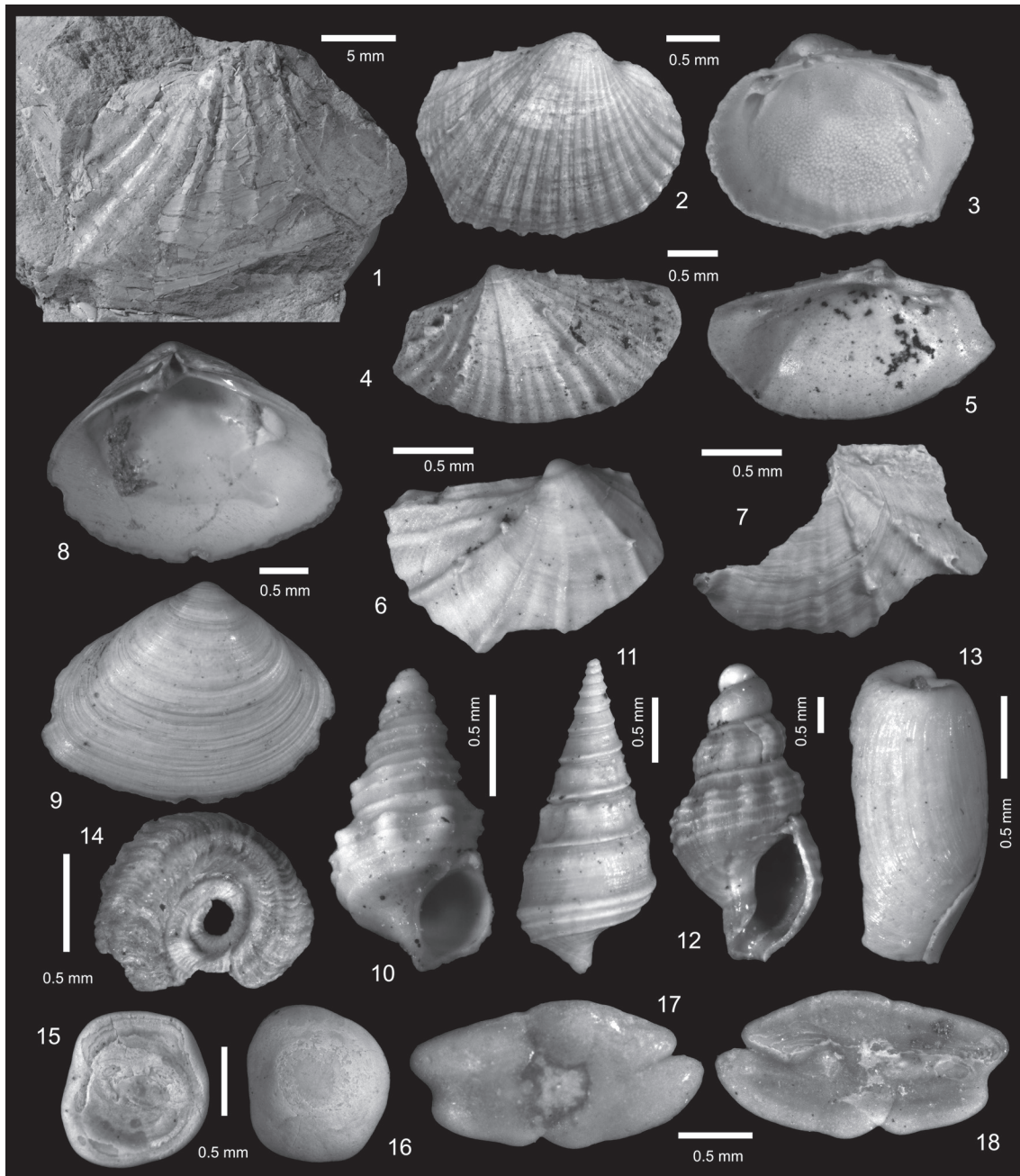


Figure 3: Sarmatian macrofossils; bivalves: 1: *Chartocardium carasi* (Jekelius, 1944) (RKB 5300-51/50), 2–3: *Obsoletiforma jekeliusi* (Papp, 1954) (RKB 5260-58/57), 4–5: *Inaequicostata politioanei* (Jekelius, 1944) (RKB 5300-47/46); 6–7: *Chartocardium carasi* (Jekelius, 1944) (RKB 7260-58/57), 8–9: *Ervilia dissita* (Eichwald, 1830) (RKB 5300-51/50); gastropods: 10: *Cerithium rubiginosum* (Eichwald, 1830) (RKB 5300-46/45), 11: *Granulolabium bicornutum* (Brocchi, 1814) (RKB 5300-47/46), 12: *Akburunella cf. triformis* (Kolesnikov, 1932) (RKB 5300-40/39), 13: *Retusa* sp. (RKB 5300-34/33); polychaetes: 14: *Spirorbis bilineatus* (Schmidt, 1951) (RKB 5300-57/56); otoliths: 15–16: *Hesperichthys reductus* (Schwarzshans et al., 2017) (RKB 5300-38/37), 17–18: *Paratrisopterus caspius* (Bogatshov, 1929) (RKB 5300-59/58).

sample RKB 5300-37/36. Numerous bone fragments and scales accompany otoliths of the Sarmatian sand goby *Hesperichthys reductus* in RKB 5300-38/37. Although no significant lithological change occurs, the assemblages shift distinctly towards *Polititapes tricuspid*-dominated assemblages from sample RKB 5300-36/35 to 5300-32/31. Gastropods are mainly represented by *Acteocina lajonkaireana* and Hydrobiidae, along with a single occurrence of *Melanopsis impressa*, in RKB 5300-33/32. A sand bed with gravel is intercalated from 30.3 to 31.3 m; it is rich in fragmented and partly abraded shells of

Polititapes tricuspid and *Obsoletiforma vindobonensis*; shells of *Melanopsis pseudonarzolina* are well preserved.

The upper part of the core up to 16.6 m comprises clay and silty clay, interrupted only by a fine sand/silt unit from 25.7 to 28.1 m. Shells of *Lymnocardium timisense* and *L. pseudoobsoletum* are characteristic in samples RKB 5300-29/28 to 5300-26/25 and 5300-24/23. Sample RKB 5300-25/24 and all samples above RKB 5300-24/23 are barren of molluscs (but contain ostracods). Small pyrite tubes are abundant in the interval from 22 to 25 m. The uppermost ~17 m of the core drilled

Holocene/anthropocene sand and gravel and are not investigated herein.

RKB 5260: The basal 5 m comprise silty clay with rich mollusc faunas; *Polititapes tricuspis* predominates the assemblages along with cardiids, such as *Obsoletiforma vindobonensis*. A sandy unit with coarse gravel and pebbles passing upsection into fine sand with silt intercalations occurs from 55.5 to 52.5 m. Abraded Sarmatian molluscs and iron oxide concretions are frequently found in the base of this interval (RKB 5260-56/55); other samples are barren of molluscs, except for rare *Melanopsis pseudonarzolina* in RKB 5260-54/53 (Fig. 4). Upsection follows a rather uniform succession of clay and silty clay; fine sand intercalations occur at 49.0 to 47.5 m, 29.8 to 28.6 m and 24.0 to 22.7 m. Lymnocyprid-dominated mollusc assemblages with rare dreissenids characterise samples RKB 5260-52/51 to 5260-47/46. Pyrite tubes are very frequent in samples RKB 5260-46/45 to 5260-44/43, accompanied by mass occurrences of ostracods; molluscs are subordinate in this interval. The following samples are either barren or contain only few autochthonous lymnocyprids and/or reworked Sarmatian shells. Lignitic detritus and shell fragments of *Theodoxus* sp. appear in RKB 5260-38/37. Upsection follows an interval with rare lymnocyprids and partly barren samples; spherical pyrite concretions occur scattered between RKB 5260-37/36 and RKB 5260-34/33. At RKB 5260-30/29, rich lymnocyprid assemblages reappear. These samples bear diverse mollusc assemblages, with *Socenia soceni*, *Goniochilus haidingeri* (Fig. 4) and juvenile *Melanopsis* of the *Melanopsis fossilis* flock (RKB 5260-29/28). The diversity declines distinctly in the uppermost samples (RKB 5260-23/22 to 5260-21/20); in addition, lignitic detritus becomes frequent above 25

m. The uppermost ~21 m of the core drilled Holocene/anthropocene sand and gravel and is not investigated herein.

RKB 7260: Lithologically, the core is rather uniform, comprising clay and silty clay, with few intercalations of fine-to-coarse sand with gravel at 50.1–48.5 m, fine sand at 31.3–28.1 m and 19.8–18.9 m as well as a 5-cm-thick sandstone bed at 12.2 m. Samples RKB 7260-60/59 to 7260-58/57 yield moderately rich cardiid assemblages with *Polititapes tricuspis*, *Acteocina lajonkairieana* and rare *Ervilia dissita*. The following samples (7260-57/56, 7260-56/55) are barren of molluscs but contain numerous iron oxide concretions. Lymnocyprid-dominated assemblages appear at RKB 7270-55/54, 7260-50/49 and 7260-47/46, interrupted by intervals with rare cardiids or barren samples. From RKB 7260-46/45 to 7260-32/31, samples are nearly barren of molluscs. Small pyrite tubes are frequent within this interval (RKB 7260-45/44, 7260-44/43 and 7260-42/41), grading into more spherical pyrite concretions in RKB 7260-41/40 and RKB 7260-32/31. The fauna of the uppermost samples of RKB 7260 is rather poor; barren intervals are common (RKB 7260-23/22, 17/16 and 16/15). Rich Pannonian faunas appear again in the uppermost part of the core (RKB 7260-13/12 to 10/9), including *Lymnocypridium timisense*, *Mytilopsis* sp., *Socenia soceni* and numerous ostracods.

4.2 Foraminifera

The Sarmatian samples yielded 5351 foraminiferal specimens representing 51 species-level taxa (Appendix 1). Of these, *Porosonion granosum* accounts for 68.7% of the total counts, followed by *Elphidium hauerinum* (8.6%), *Nonion* sp. (5%), *Ammonia beccarii* (4.1%), *Cycloforina fluviata* (2.7%), *Elphidium aculeatum* (1.6%), *Bolivina sarmatica* (1.3%) and *Pseudotriloculina consobrina* (1.3%) (Fig. 5). All other species account for <1% of the fauna.

The statistical analysis of the foraminiferal faunas, based on their percentages per sample, reveals four distinct groups in the cluster analysis (Ward's method), which are also visible in the principal component analysis (PCA) (Fig. 6). Cluster 1 is distinctly separated from the other three clusters and forms a wide scatter in the PCA; the samples of the other clusters are more similar to each other and form a succession in the PCA.

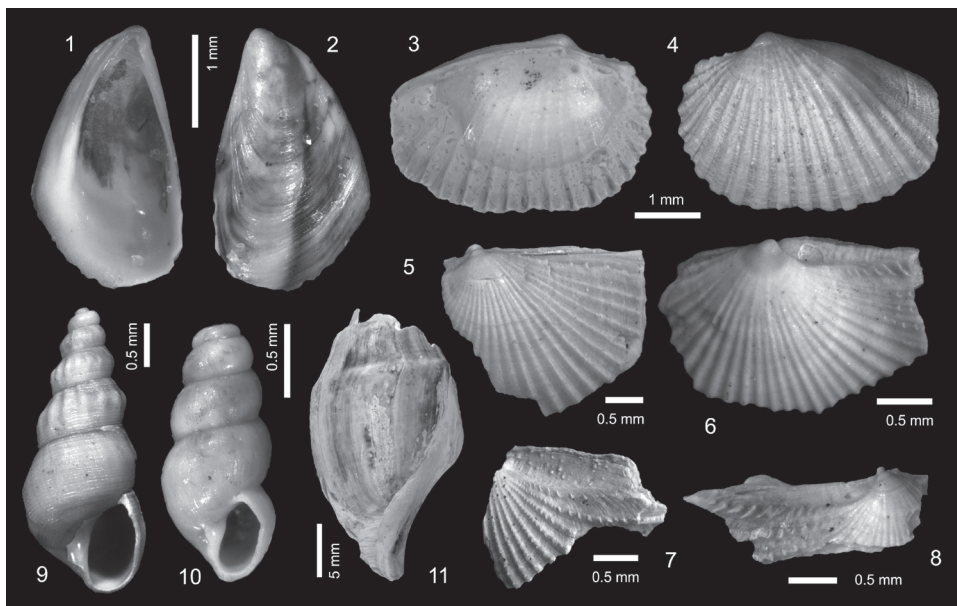


Figure 4: Pannonian macrofossils; bivalves: 1–2: *Mytilopsis moesia* (Jekelius, 1944) (RKB 5260-29/28), 3–4: *Monodacna viennensis* (Papp, 1953) (RKB 5260-29/28), 5, 6: *Lymnocypridium timisense* (Jekelius, 1944) (RKB 5260-26/25), 7, 8: *Lymnocypridium pseudoobsoletum* (Fuchs, 1873) (RKB 5260-25/24); gastropods: 9: *Goniochilus haidingeri* (Stoliczka, 1862) (RKB 5260-23/22), 10: *Socenia soceni* (Jekelius, 1944) (RKB 5260-29/28), 11: *Melanopsis pseudonarzolina* (Papp, 1953) (RKB 5260-54/53).

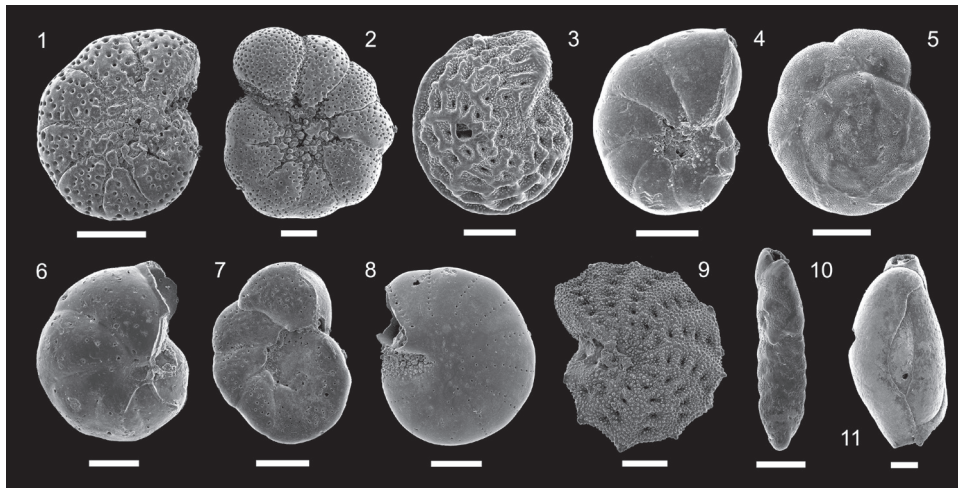


Figure 5: Scanning electron microscopy (SEM) pictures of typical foraminifers from the Sarmatian cores; 1–2: *Porosonion granosum* (D'Orbigny, 1846) (RKB 5300-36/35); 3: *Elphidium hauerinum* (D'Orbigny, 1846) (RKB 5300-59/58); 4: *Nonion* sp. (RKB 5300-34/33); 5: *Ammonia beccarii* (Linné, 1758) (RKB 5300-33/32); 6–7: *Lobatula lobatula* (Walker and Jakob, 1798) (RKB 5300-47/46); 8: *Elphidiella minuta* (Reuss, 1865) (RKB 5300-59/58); 9: *Elphidium aculeatum* (D'Orbigny, 1846) (RKB 5300-59/58); 10: *Bolivina sarmatica* (Didkowski, 1959) (RKB 5300-44/43); 11: *Cycloforina fluviata* (Vengliniski, 1958) (RKB 5300 44/43). Scale bars = 100 µm.

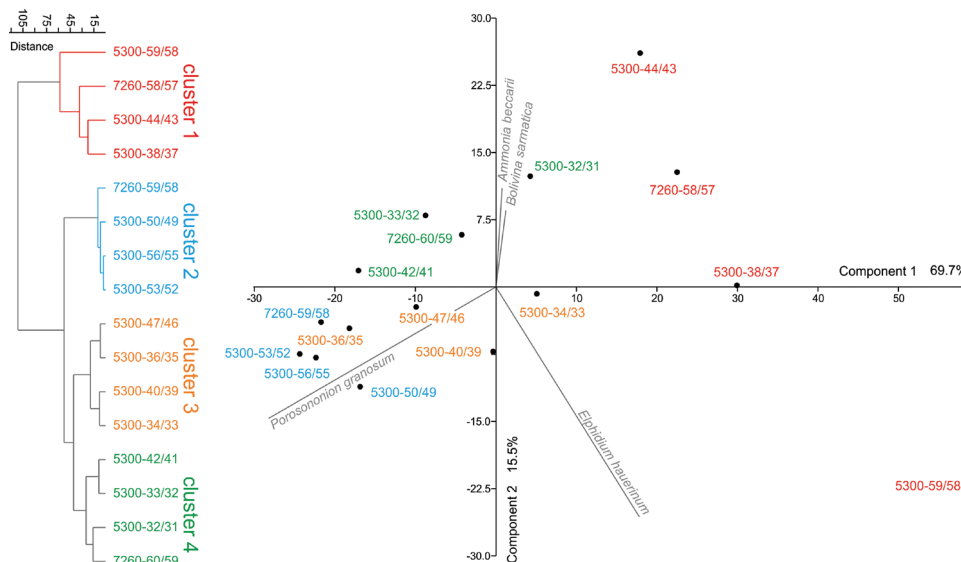


Figure 6: Statistical analyses of the quantitative foraminiferal data (based on percentages per sample). The cluster analysis reveals four distinct groups of samples, which appear also in the principal component analysis. Abundance and presence of *Porosonion granosum* and/or *Elphidium hauerinum* explain most of the groupings.

Aside from *Porosonion granosum*, ranging from 24.4% to 44.2% (mean = 38.6%, σ = 9.5), all samples of cluster 1 (red in Fig. 6) contain *Nonion* sp. (0.3%–8.0%, mean = 3.7%, σ = 3.7) and *Cycloforina fluviata* (0.3%–12.3%, mean = 6.0%, σ = 5.7). Considerable heterogeneity in taxonomic composition (e.g. 60.6% *Elphidium hauerinum* in RKB 5300-59/58 but 0% in 5300-44/43) accounts for the scattering of the samples in the PCA. The main feature separating this cluster from all others is the comparatively low contribution by *Porosonion granosum*.

All samples of cluster 2 (blue) are characterised by the dominance of *Porosonion granosum*, ranging from 88.3% to 92.8% (mean = 90.3%, σ = 2.3). Cluster 3 (orange)

is characterised by the frequent presence of *Porosonion granosum* (64.3%–85.7%, mean = 74.7%, σ = 9.0) and moderate contributions by *Nonion* sp. (11.6%–18.0%, mean = 14.4%, σ = 2.8) and *Elphidium hauerinum* (2.3%–13.7%, mean = 7.7%, σ = 5.3). Cluster 4 (green) is characterised by the occurrence of *Porosonion granosum* (60.8%–83.4%, mean = 74.4%, σ = 4.8), *Ammonia beccarii* (0.4%–15.8%, mean = 10.5%, σ = 7.2) and *Cycloforina fluviata* (0.4%–4.8%, mean = 3.1%, σ = 1.0) and the near absence of *Elphidium hauerinum*.

Samples of Cluster 1 display low dominance values (0.24–0.44, mean = 0.3, σ = 0.09) and high equitability values (0.50–0.72, mean = 0.64, σ = 0.1). Cluster 2 reveals highest dominance values (0.78–0.86, mean = 0.82, σ = 0.04) and lowest equitability values (0.19–0.24, mean = 0.22, σ = 0.02). The other two clusters form a transition between these extremes. Dominance values in Cluster 3 range from 0.46 to 0.75 (mean = 0.59, σ = 0.12) and from 0.41 to 0.71 (mean = 0.53, σ = 0.13) in Cluster 4; their equitability values are also nearly identical: Cluster 3: 0.36–0.61 (mean = 0.47, σ = 0.12), Cluster 4: 0.31–0.61 (mean = 0.46, σ = 0.12).

4.3 Ostracods

Nineteen samples from RKB 5300 and 14 from RKB 7260 were investigated for their ostracod content (Fig. 7; Appendix 4). Eight samples were barren of (determinable) ostracods (RKB 5300-32/31, 33/32, 34/33; RKB 7260-26/25, 32/31, 55/54, 56/55, 59/58); shells were frequently fragmented, hampering their identification and detailed quantitative analyses in several samples.

RKB 5300: In the lower part of the core (below the barren samples 5300-32/31 to 34/33), only the samples RKB 5300-59/58 and 42/41 yielded noteworthy fauna, which were dominated either by *Hemicytheria omphalodes* (RKB 5300-59/58) or *Cyamocytheridea leptostigma leptostigma* (RKB 5300-42/41). Scattered valves of *Amnicythere tenuis*,

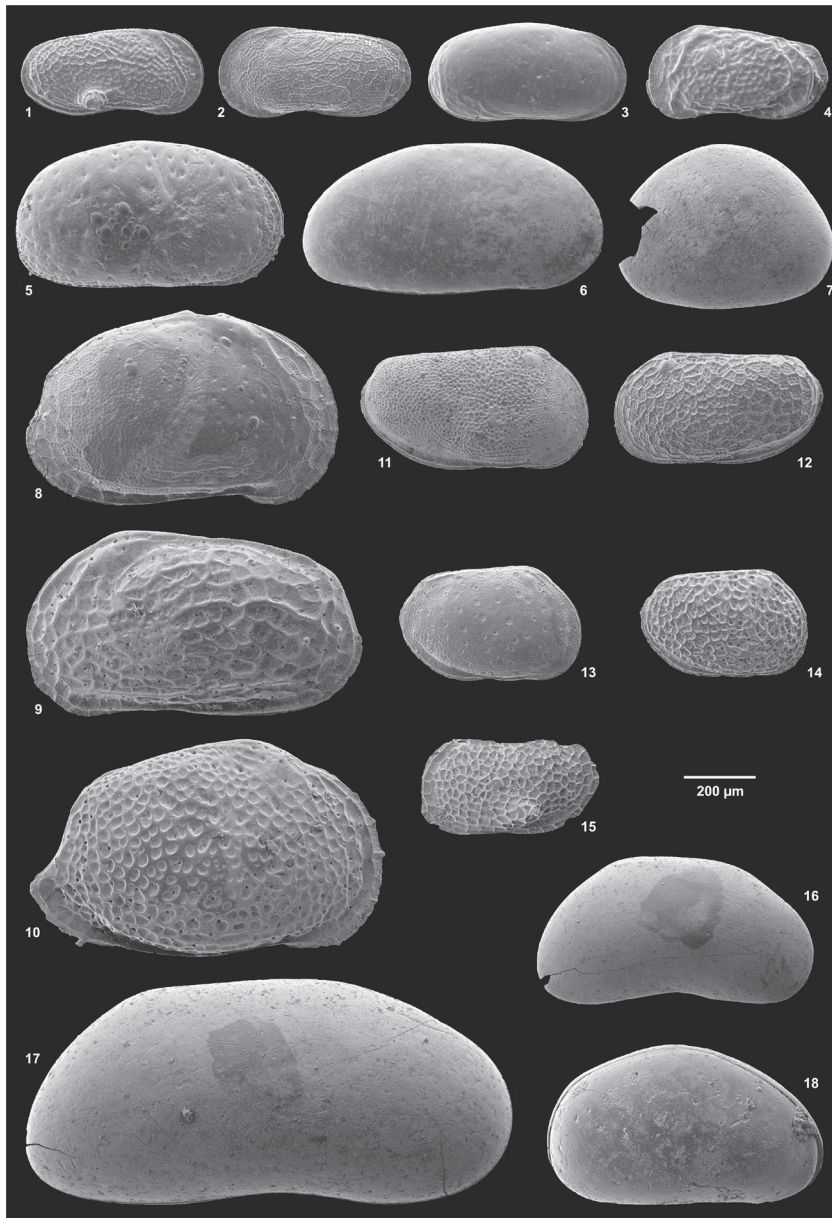


Figure 7: Scanning electron microscopy (SEM) pictures of Sarmatian and Pannonian ostracods; 1: *Amnocythere* cf. *monotuberculata* (Sokač, 1972) (RKB 5300-28/27); 2: *Amnocythere* cf. *polymorpha* (Olteanu, 1989) (RKB 5300-30/29); 3: *Amnocythere* *tenuis* (Reuss, 1850) (RKB 5300-53/52); 4: *Callistocythere* *egregia* (Méhes, 1908) (RKB 5300-50/49); 5: *Cyprideis* *tuberculata* (Méhes, 1908) (RKB 7260-25/24); 6: *Cyamocytheridea* *leptostigma* *leptostigma* (Reuss, 1850) (RKB 5300-42/41); 7: *Cypria* *reniformis* (Héjjas, 1892) (RKB 7260-23/22); 8: *Hemicytheria* *hungarica* (Méhes, 1908) (RKB 7260-50/49); 9: *Hemicytheria* *omphalodes* (Reuss, 1850) (RKB 7260-23/22); 10: *Aurila* *notata* (Reuss, 1850) (RKB 7260-58/57); 11: *Loxoconcha* cf. *irregularis* (Olteanu, 1986) (RKB 7260-23/22); 12: *Loxoconcha* *kochi* (Méhes, 1908) (RKB 7260-23/22); 13: *Loxoconcha* *muelleri* (Méhes, 1908) (RKB 5300-28/27); 14: *Loxoconcha* sp. (RKB 7260-23/22); 15: *Loxocorniculina* *hodonica* (Pokorný, 1952) (RKB 5300-30/29); 16: *Candona* sp. (RKB 7260-23/22); 17: *Amplocypris* *sincera* (Zalányi, 1944) (RKB 7260-23/22); 18: *Xestoleberis* cf. *fuscata* (Schneider, 1953) (RKB 7260-60/59). Scale bar = 0.200 mm.

Aurila notata, *Callistocythere egregia*, *Cnestocythere* sp., *Hemicyprideis dacica* and *Xestoleberis* cf. *fuscata* accompanied these. All mentioned species, except for *A. tenuis* and *H. omphalodes*, were restricted to this part of RKB 5300. Ostracod abundance and diversity increase above the barren interval and peak at sample RKB 5300-28/27, followed by a sharp breakdown at sample RKB 5300-25/24. Leptocytherids, candonids, hemicytherids and loxoconchids

shape the assemblages of this core portion, supplemented by rare occurrences of *Amplocypris sincera*, *Cyprideis tuberculata* and *Herpetocyprilla auriculata*.

RKB 7260: Up to sample RKB 7260-58/57, only *A. notata* and *X. cf. fuscata* were found. Above two barren samples (RKB 7260-56/55, 55/54), small *Cyprideis*- and/or *Hemicytheria*-dominated assemblages followed with *A. sincera*, *C. egregia*, *Candona* sp., *H. auriculata* and *Loxoconcha* cf. *irregularis* as rare, additional elements. Sample RKB 7260-23/22 yielded the most abundant and diverse fauna, with *Amnocythere* cf. *monotuberculata*, *A. sincera*, *Candona* sp., *Cypria reniformis*, *C. tuberculata*, *Hemicytheria* spp. and loxoconchids.

4.4 Pollen

RKB 5300: Four samples (RKB 5300-38/37, RKB 5300-36/35, RKB 5300-34/33 and RKB 5300-29/28) were analysed, of which only RKB 5300-38/37 and RKB 5300-29/28 gave good results in terms of pollen assemblages (Appendix 3). The lowest sample RKB 5300-38/37 showed high abundance of *Ulmus*, *Quercus*, *Fagus*, *Carya*, *Engelhardia* and *Liquidambar*, suggesting a diverse, mainly deciduous forest mixed with evergreen taxa such as Arecaceae and Cupressaceae (Taxodiaceae). Herbs and grasses were only represented by Poaceae (11.03%), while Pinaceae strongly contributed to the assemblage (*Cathaya* 10.5%; *Abies* 4.6%; *Picea* 3.4% and *Tsuga* 3.4%), when *Pinus* was excluded from all calculations. Otherwise, *Pinus* would dominate all samples, ranging from 57.6% in RKB 5300-38/37 to >60% in the three remaining samples. Considering all Pinaceae, these values increased from 69.4% to >90%. The pollen assemblage of RKB 5300-29/28 had a similar stronger contribution of Pinaceae, such as *Cathaya* (23.3%), *Tsuga* (10.7%) and unidentified Pinaceae (31.5%). The assemblage composition was similar to that in the samples RKB 5300-38/37 as *Quercus*, *Carya*, *Ulmus* and *Fagus* were

most abundant. Other elements, such as *Engelhardia*, Sapotaceae, Arecaceae, *Liquidambar* and *Podocarpium podocarpum* (= *Fupingopollenites wackersdorffensis*) were rare in RKB 5300-29/28, while others disappeared from the assemblage in comparison to RKB 530-38/37 (Myrtaceae, Oleaceae, Hamamelidaceae and *Rhus*). Although not determined further, dinoflatellate cysts were also most abundant in sample RKB 5300-38/37.

RKB 5300-31/30 yielded almost no organic remains, and in RKB 5300-21/20, all pollen grains were strongly corroded (surface damaged).

RKB 7260: Three samples were analysed (RKB 7260-54/53, RKB 7260-51/50 and RKB 7260-41/40). Pinaceae strongly dominated all samples, ranging from 79.7% (RKB 7260-51/50) and 83.6% (RKB 7260-54/53) to 94.0% (RKB 7260-41/40). Although *Pinus* was decreasing towards the top of the core, from 62.0% (RKB 7260-54/53) to 36.0% and 38.0%, the amount of Pinaceae content was increasing (from 6.3% up to 28.9% and 33.1%), which was mainly a taphonomic signal (poor preservation and fragmentation of other pollen grains).

Similarly, the identification of pollen grains even at the genus level was difficult. Sample RKB 7260-54/53 represented the best pollen assemblage, with a large number of *Fagus*, *Carya*, *Quercus*, *Ulmus*, *Juglans* and *Tilia*. Poaceae (6.22%) and Cupressaceae (Taxodiaceae; 4.9%) also significantly contributed to the pollen assemblage, along with the Pinaceae genera *Cathaya* (20.1%), *Tsuga* (9.1%), *Abies* (5.3%) and *Picea* (5.5%). Despite the decreasing percentages in RKB 7260-51/50 and RKB 7260-41/40 resulting from the increase in Pinaceae, the angiosperm assemblage was highly similar to that of RKB 7260-54/53. RKB 7260-49/48 contained many broken pollen grains, corroded surfaces as well as pyrite inside the pollen grains.

4.5 Tubular pyrite aggregates

All cores revealed an interval ~3–4 m thick, with large numbers of black iron sulphide tubes (RKB 5300 25 to 22 m, RKB 5260 46 to 43 m, RKB 7260 45 to 41 m). The tubes were slender, elongated, rarely bifurcating and attained length of ~1–2 mm (in the washing residue) and diameter of 0.2–0.5 mm (Fig. 8). Smaller specimens were irregular or sub-spherical, but might simply represent fragmented tubes. The walls of the tubes were composed of aggregates of densely spaced pyrite framboids, which displayed a wide range of diameters (~30–70 µm) but were rather uniform within an individual aggregate. Based on X-ray diffraction analysis, the tubes consisted of pyrite, without marcasite component. This phenomenon

has not been described for Pannonian deposits of the Vienna Basin so far.

5. Discussion

5.1 Biostratigraphy

High endemism and rapid radiations characterise the middle Miocene Sarmatian and the late Miocene Pannonian aquatic mollusc fauna (Papp, 1953, 1954; Papp et al., 1974; Magyar et al., 1999; Harzhauser and Piller, 2007; Neubauer et al., 2013a, b) and ostracod fauna (Kollmann, 1960; Cernajsek, 1974; Jiříček, 1974, 1985; Krstić, 1985; Olteanu, 1989; Zelenka, 1990, 1992; Jiříček and Riha, 1991; Gross, 2004, 2006; Tóth, 2008.). Similarly, the foraminiferal assemblages display rapid shifts in composition throughout the Sarmatian (Cicha et al., 1998). These faunistic successions provide a basis for a biostratigraphic and ecostratigraphic zonation for both stages. Therefore, autochthonous assemblages from the cores can be reliably correlated with these biozones.

Sarmatian: The foraminiferal assemblages of RKB 5300-59/58 to 5300-32/31 and RKB 7260-60/59 to 7260-58/57 are strongly predominated by *Porosonion granosum* (d'Orbigny, 1846), accounting for 24.4%–92.8% of the total assemblages, partly accompanied by large numbers of *Elphidium hauerinum* (d'Orbigny, 1846). This faunal type is indicative for the late Sarmatian *Porosonion granosum* Zone (Papp et al., 1974; Cicha et al., 1998). *Cnestocythere*, *Hemicyprideis dacica* and *Xestoleberis* have their last occurrence in the Central Paratethys during the upper Sarmatian (for ranges of species and references, see Appendix 4). *Aurila notata* and *Cyamocytheridea leptostigma leptostigma* are index fossils for the *Porosonion granosum* Zone. Hence, according to the ostracod record, samples RKB 5300-59/58 to 36/35 and RKB 7260-60/59 to 58/57 are assigned to this zone. The molluscs from RKB 5300-60/59 to 5300-32/31, RKB 5260-60/50 to 5260-57/56 and RKB 7260-60/59 to 58/57 represent typical assemblages of the upper *Ervilia* Zone of the Sarmatian Stage (Papp, 1956; Harzhauser and Piller, 2004). Characteristic species are *Ervilia dissita* (Eichwald, 1830), *Polititapes tricusps* S.S. (Eichwald, 1829) and *Sarmatimacra eichwaldi* (Laskarev, 1914). These species differ clearly from their larger and thick-shelled descendants from the younger *Sarmatimacra* Zone, such as *Ervilia dissita podolica* (Eichwald, 1830), *Polititapes tricusps ponderosa* (d'Orbigny, 1844) and *Sarmatimacra vitaliana* (d'Orbigny, 1840) (Neubauer et al., 2013a). Therefore, the presence of the *Sarmatimacra*

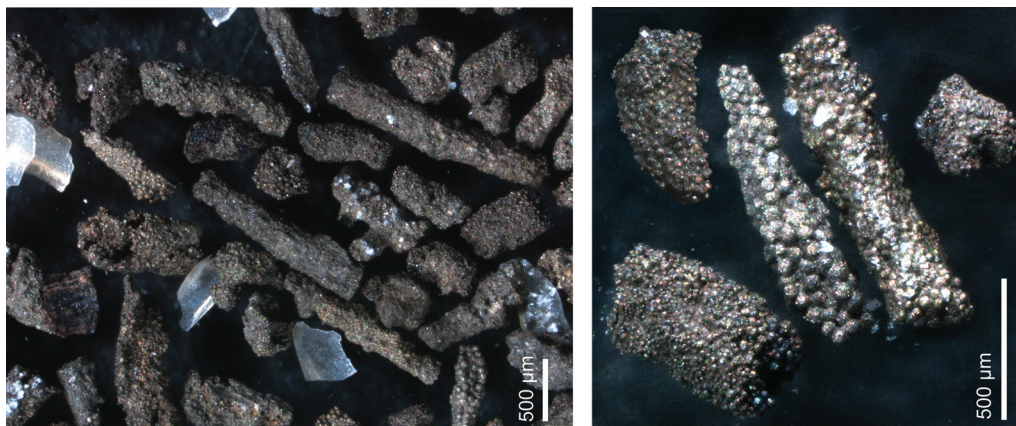


Figure 8: Authigenic tubular pyrite aggregates from RKB 5260-47/46.

Zone – corresponding to the upper part of the *Porosonion granosum* Zone – is excluded, and the cores are correlated with the upper *Ervilia* Zone.

Pannonian: Samples RKB 5300-31/32 to 21/22 yield typical Pannonian ostracod faunas (for ranges of species and references, see Appendix 4). *Amnicythere tenuis*, *Calistocythere egregia*, *Hemicytheria hungarica* and *Hemicytheria omphalodes* appear also in upper Sarmatian deposits but are restricted to the lower part of the Pannonian (Zones A–C of Papp, 1951; *A. tenuis* is recorded up to Zone E). *Amplocypris sincera* spans the Pannonian Zones A–D, *Herpetocyprilla auriculata* from A to E and *Cyprideis tuberculata* from Zones A to C. However, *C. tuberculata*, *H. hungarica* and *H. auriculata* occur characteristically in Zone B of Papp (1951), with which we correlate the sampled interval. The productive samples RKB 7260-54/53 to 23/22 contain taxa known only from Pannonian sediments (except for *C. egregia*, *H. hungarica* and *H. omphalodes*). The found species indicate an early Pannonian age (Zones A–C). The occurrence of *C. tuberculata*, *H. hungarica*, *H. omphalodes* and *H. auriculata* argue for an attribution to Zone B of Papp (1951). *Melanopsis pseudonarzolina*, occurring in RKB 5300-33/32 and RKB 5260-54/53, is characteristic for the lower Pannonian Zone B of Papp (1951), corresponding to the upper part of the *Mytilopsis ornithopsis* Zone of Harzhauser et al. (2004). Samples RKB 5300-29/28 to 5300-24/23, RKB 5260-51/50 to 5260-38/37 and RKB 7260-55/54 to 7260-10/9 are clearly of Pannonian age, as indicated by the species of lymnocyprids and dreissenids. *Lymnocardium pseudoobsoletum* is restricted to the early and early middle Pannonian (Zones B–D of Papp, 1951), *L. timisense* is documented from the early Pannonian (Zones B–C of Papp, 1951), and *Mytilopsis moesia* is an early Pannonian species (Zones A–C of Papp, 1951) (see Schultz, 2003, for biostratigraphic data for the species). Considering these ranges, we infer an early Pannonian age for the core interval, correlated with the Pannonian Zone B of Papp (1951) and the *M. ornithopsis* Zone of Harzhauser et al. (2004).

In RKB 5260, samples 5260-29/28 and 5260-23/22 yield *Goniochilus haidingeri*, which is unknown from the *M. ornithopsis* Zone. It appears in the *Mytilopsis hoernesii* Zone (Pannonian Zone C of Papp, 1951) (Harzhauser et al., 2002). Similarly, the *Melanopsis fossilis* flock experiences its first radiation during the *M. hoernesii* Zone (Neubauer et al., 2013b). Therefore, the upper part of RKB 5260 is correlated with this zone. The occurrence of freshwater species and lignitic detritus at RKB 5260-38/37 indicates a possible sequence boundary between the underlying and overlying lacustrine units. Therefore, we tentatively place the boundary between the *M. ornithopsis* and the *M. hoernesii* zones at ~38–37 m. The sample interval RKB 7260-30/29 to 10/9 yields few samples with rich mollusc assemblages; the occurrence of *Lymnocardium timisense* suggests that this part of the core is still part of the *M. hoernesii* Zone.

Based on these results, we place the Sarmatian/Pannonian boundary at 31.3 m in RKB 5300, at 55.5 m in RKB

5260 and at 57.0 m in RKB 7260. All these boundaries are distinctly lower than the ones previously proposed by Maslo (2015), who placed the boundary at 30.8 m in RKB 5300, at 52.5 m in RKB 5260 and at 50.2 m in RKB 7260. The biostratigraphic misinterpretation of the reworked Sarmatian shells, which may be much more abundant than the rare Pannonian elements, explains this discrepancy. For example, sample RKB 5300-31/30 contains a Sarmatian foraminiferal assemblage, mainly comprising *Porosonion granosum*. In addition, fragmented and abraded shells of *Polititapes tricuspidis* and *Obsoletiforma vindobonensis* appear in this sample. Although this fauna would thus suggest a Sarmatian age at first sight, the occurrence of *Melanopsis pseudonarzolina* allows a correlation with the early Pannonian. Moreover, the low diversity and low specimen numbers of the foraminiferal assemblage differ clearly from the same for the Sarmatian samples, supporting our interpretation (Appendix 1).

5.2 Palaeo-ecology, depositional environment and sea/lake level

The rich fossil content, coinciding patterns in the MS and occurrence of pyrite tubes allow a reliable cross-correlation of the cores. The palaeoenvironmental interpretation of these data reveals the presence of two Sarmatian and three Pannonian transgressive–regressive sequences (T-R sequences sensu Catuneanu et al., 2011). These are termed herein SA1, SA2, PA1, PA2 and PA3. An additional Sarmatian sequence is documented from RKB 5320 (Fig. 9), but this interval was not studied by us and it remains open if it represents a T-R sequence.

Sequence SA1 ranges from 60 to 46.6 m in RKB 5300; it is generally characterised by *Ervilia*-*Chartocardium*-*Inaequicostata*-dominated assemblages among the molluscs. Modern *Ervilia* species are deposit feeders, burrowing in sand and muddy sand. *Ervilia* prefers intertidal and shallow sublittoral environments at a water depth of ~10–30 m but ranges down to the continental shelf (Zuschin and Oliver, 2003; Gofas et al., 2011). The mass occurrences of *Ervilia dissita* in the cores is reminiscent of modern examples, where *Ervilia* forms boom-and-bust populations dominating benthic ecosystems (Albano et al., 2016). The serpulids in the lower part of SA1 reflect the presence of sea grass or macroalgae to which their tubes are attached. Their subsequent absence correlates with a deepening of the environment. Similarly, the occurrence of *Elphidium hauerinum*, *E. aculeatum* and *Elphidiella minuta* and the rare ostracod fauna at the base of core RKB 5300-59/58 indicates a shallow, marine environment. Modern *E. aculeatum* and *E. minuta* are typically found in seagrass-dominated environments at 20–30 m depth (Langer, 1993).

Otoliths are also only found in the lower part of SA1. The gadid *Paratrisopterus caspius* and the sand goby *Hesperichthys reductus* were common species during the Sarmatian of the Central and Eastern Paratethys (Schwarzhans et al., 2017a, 2017b). *Paratrisopterus caspius* likely was a euryecious cod, occurring typically in schools

The Sarmatian/Pannonian boundary at the western margin of the Vienna Basin (City of Vienna, Austria)

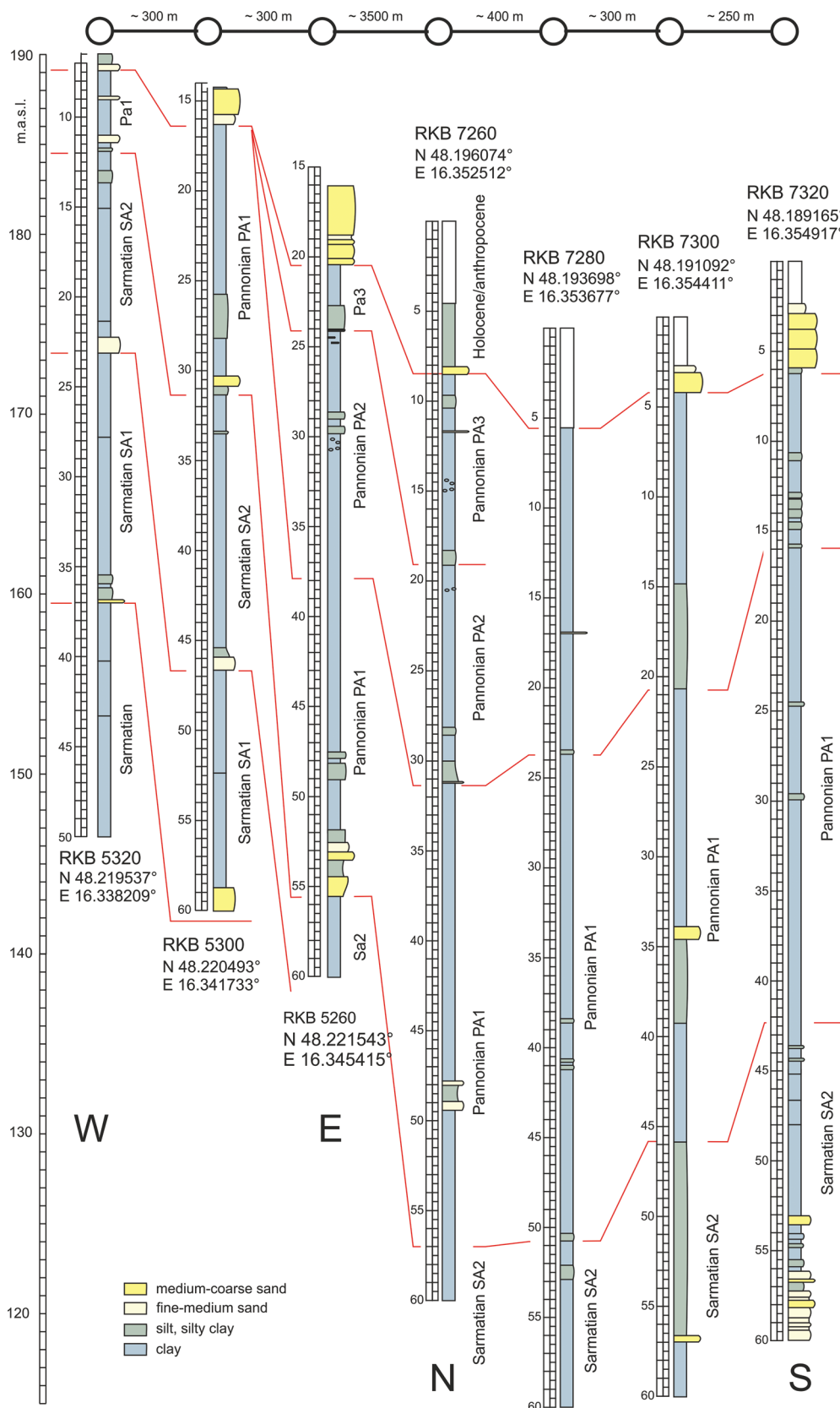


Figure 9: Correlation of boreholes from the basin margin (RKB 5320-5260) and the Vösendorf Basin (RKB 7260-7320).

probably in the epipelagic zone and perhaps also in the uppermost mesopelagic zone above muddy bottoms (Schwarzahns et al., 2017a). Similarly, the epibenthic

gobiid *Hesperichthys reductus* likely inhabited the whole shelf, possibly down to depths of ~200 m or more, based on the ecological requirements of the closely related extant sand gobies (Schwarzahns et al., 2017b). The thin-shelled Sarmatian cardiid genera are extinct. Similar to modern cardiids, they might have been shallow burrowers in soft sub-strata (Wilson, 1998); although most cardiids inhabit coastal habitats, several genera are adapted to offshore environments (Bosch et al., 1995). The thin-shelled Sarmatian species are generally found in basinal clays, suggesting that they inhabited offshore mud bottom environments (Jekelius, 1944; Papp, 1954).

Modern populations of *Porosonion granosum* prefer inner neritic environments at a water depth of ~80–100 m (Avnaim-Katav et al., 2013). Therefore, the strong dominance of *Porosonion granosum* (>88%) and the absence of shallow water taxa in samples RKB-5300-56/55 RKB 5300-53/52 and RKB-5300-50/49 suggests a rapid transgression, which peaked around 55 m in the core. The maximum flooding of SA1 around 55 to 54 m also coincides with a peak in MS values.

This interpretation fits well with the assumed Sarmatian palaeogeography, with the coast formed by Alpine rock units situated about 4 km west of the borehole RKB 5300. Thus, the depositional environment of sequence SA1 was

the shallow- to medium-deep sublittoral type at water depth of several tens of metres at distance of several kilometres from the coast, correlating with the highest

dominance values in the foraminiferal assemblages. The frequent occurrence of *Hesperichthys reductus* in this interval might set a limit of several tens of metres for the maximum water depth.

Sequence SA2 starts with a sandy intercalation at 46.6 m and lignitic clay around 45 to 44 m. Littoral environments became established during this sea level low, as indicated by the frequent occurrence of the batillariid *Granulolabium bicinctum*, which was restricted to intertidal mudflats and the shoreline (Lozouet et al., 2001; Latal et al., 2006; Lukeneder et al., 2011). Similarly, the epifaunal *Lobatula lobatula* in RKB 5300-47/46 dwells in high-energy littoral environments (Murray, 2006).

The area was rapidly flooded again and offshore cardiid assemblages took over. *Ervilia* is subordinate in most parts of the upper part of RKB 5300 from 44 to 31 m. The abundance of *Bolivina sarmatica* suggests dysoxic conditions, coinciding with an increase in salinity, indicated by the occurrence of *Cycloforina*. Additionally, the opportunistic *Ammonia beccarii* and *Nonion* sp. indicate a shallow water depth and a high nutrient level (Murray, 2006). Infralittoral conditions can be assumed for the almost monospecific (Cyamocytheridea) ostracod sample of RKB 5300 41/42. The maximum flooding of this sequence might be placed at RKB 5300-38/37, where the presence of *Bulimina elongata* along with fish bones and scales suggests partly dysoxic conditions.

Soon, the medium-deep sublittoral cardiid assemblages were replaced by *Polititapes*-dominated assemblages. This venerid is usually found in shallow marine coastal palaeo-environments, such as intertidal flats and marine coastal dunes, where it may be a rock-forming element (Neubauer et al., 2013a; Harzhauser and Piller, 2010; Lukeneder et al., 2011). Modern relatives, such as *Polititapes aureus* (Gmelin, 1791), are shallow burrowers in lower intertidal and subtidal zones, found rarely at higher depths (Bruyne et al., 2013; Oliver et al., 2016). Similarly, the foraminiferal assemblages with high amounts of *Ammonia beccarii* and miliolids, as well as rare *Bolivina* and *Bulimina*, indicate a shallowing as well as the establishment of nutrient-rich coastal environments and tidal flats (Walton and Sloan, 1990). This shallowing is also reflected by the occurrence of the gastropod *Melanopsis impressa* in RKB 5300-33/32. Extant representatives of *Melanopsis* live in freshwater streams, rivers, lakes and oases (Bilgin, 1973; Bandel et al., 2007). Thus, although SA2 represents another T-R cycle as SA1, it did not reach the water depth of SA1, and coastal environments were already prograding towards the investigation area during its deposition.

The Sarmatian samples in RKB 5260 are nearly identical with the *Polititapes* assemblages from RKB 5300. In the context of the geographic closeness of the two boreholes, we consider the 60–55.5 m core in RKB 5260 to be coeval with the 31.3–36.0 m core of RKB 5300. Similarly, the Sarmatian of RKB 7260 (60–57 m) might be roughly coeval, but due to the much larger distance between the boreholes, a direct correlation is impossible.

This trend in SA1 is also seen in the results of the cluster analysis and the distribution of foram samples within the four clusters. Cluster 1 is characterised by a low occurrence of *Porosonion granosum*, but the samples show no further similarity to each other and unites samples indicating slightly dysoxic conditions (RKB 5300-44/43, 38/37) with samples from seagrass-dominated environments (RKB 5300-59/58). Cluster 2 shows a significant dominance of *Porosonion granosum*. The low percentage of other taxa suggests a relatively deep inner neritic environment of ~80–100 m (Langer, 1993), corresponding to the transgression and maximum flooding of SA1. Cluster 3 is defined by a high dominance of *Porosonion* (although not as high as in Cluster 2), and these samples indicate shallower environments than Cluster 2. This is based on the abundance of *Nonion* sp. and *Elphidium hauerinum*. The occurrence of *Lobatula lobatula* in sample RKB 5300-47/46 indicates high water energy (Murray, 2006), which correlates with the sandy sediment in the base of SA2. Cluster 3 combines samples from regressive phases. The samples of Cluster 4 indicate increased salinity based on the abundance of *Cycloforina fluviata*, miliolids and *Ammonia beccarii* (Rögl, 1998; Filipescu and Popa, 2001; Murray, 2006).

Sequence PA1 ranges from 31.3 m to 16.6 m in RKB 5300 (top truncated by Holocene/anthropocene units), from 55.5 to 38.0 m in RKB 5250 and from 57.0 to 31.3 m in RKB 7260. The sandy-gravelly basal units of this sequence are only recorded in RKB 5300 and 5260, which are distinctly closer to the palaeo-coast than RKB 7260. Although palaeontologically identical, the wire-log patterns of these basal units do not allow a direct correlation of the two cores.

Upsection, all three cores reveal a near-identical development, starting with strongly lymnocytherid-dominated fauna. Lymnocytherids settled in littoral to sublittoral offshore environments in Lake Pannon (Geary et al., 2010; Magyar et al., 2016). The delicate, thin-shelled species seem to have been adapted exclusively to muddy offshore bottoms below the wave base (Papp, 1951; cf. Cziczter et al., 2009). Ostracod assemblages from RKB 5300-31/30 to 28/27 and from RKB 7260-54/53 and 50/49 are largely formed by *Amnicythere*, candonids, *Hemicytheria* and loxoconchids, which indicate littoral to sublittoral, brackish water environments (Appendix 4). The rare occurrence of the littoral genera *Cyprideis* and *Amplocypris* may hint to medium-deep sublittoral water depth. Thus, this unit suggests a rapid transgression of Lake Pannon, covering exposed Sarmatian strata. The absence of typical Pannonian near-shore elements, such as thick-shelled dreissenids (e.g. *Congeria*, *Mytilopsis*), supports this interpretation. This lymnocytherid-dominated interval displays a 'bulge' of high MS values in all cores (Fig. 10), ranging from 27.5 to 30.0 m in RKB 5300, from 48.5 to 51.5 m in RKB 5260 and from 48.5 to 51.0 m in RKB 7260. In all cores, this interval is followed by a prominent negative peak in MS values from 26.5 to 27.5 m in RKB 5300, 47.5 to 48.5 m in RKB 5260 and from 46.5 to 47.0 m in RKB 7260. In all

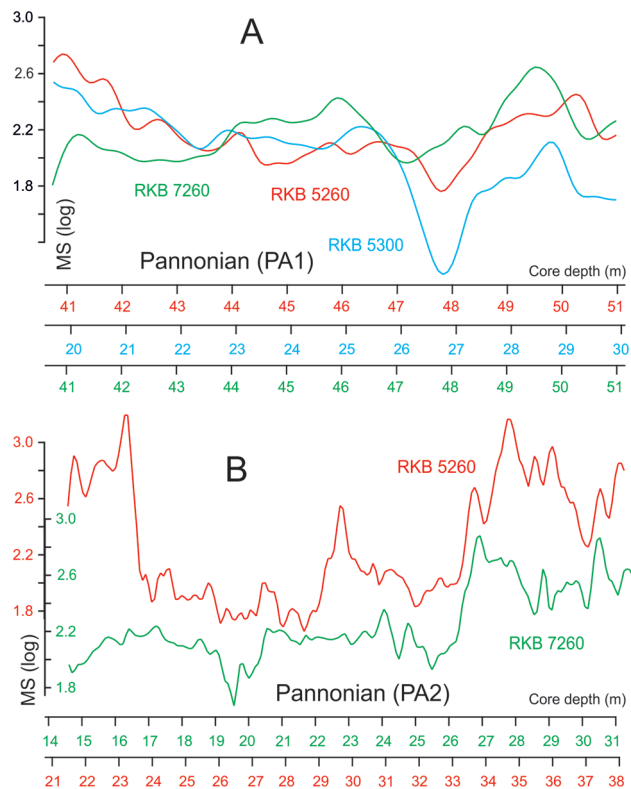


Figure 10: Comparison of patterns in magnetic susceptibility (log-transformed, 21-point Gaussian filter). Largely coinciding patterns from the two Pannonian sequences PA1 (A) and PA2 (B) suggest synchronous deposition of the respective intervals and provide potential tie points for cross-correlation. Strongly dissimilar intervals (upper 4 m in B) reflect different depositional histories.

cores, an interval of ~3–4 m thickness with pyrite tubes sets in 2 m above the negative MS peak. Consequently, we propose that these units are strictly coeval in all cores, allowing a precise correlation. Dysoxic lake bottom conditions are indicated by the near absence of molluscs and ostracods in the upper part of PA1. A slight shallowing is only indicated in the uppermost part of the sequence by occasional occurrences of reworked Sarmatian shells. Moreover, the presence of iron oxide concretions might indicate better oxygenation.

Sequence PA2 ranges from 38.0 to 24.4 m in RKB 5260 and from 31.3 to probably 12.1 m in RKB 7260. The base of this sequence is documented in RKB 5260-38/37 by lignitic clay with *Theodoxus* sp., which is an obligate freshwater genus (Welter-Schultes, 2012). Its occurrence is related to riverine influx or the establishment of a freshwater lake, fringing Lake Pannon. Littoral, brackish water conditions are also indicated by the *Cyprideis*-dominated ostracod fauna of RKB 7260-30/29. In RKB 7260, this phase of lowered lake level corresponds to the occurrence of poorly sorted fine-to-medium sand from 31.3 to 30.0 m, followed by a rapid lake-level rise leading to dysoxic conditions in the lower part of the sequence (up to 30 m in RKB 5260). Irregular-to-spherical pyrite concretions are frequent, pointing to anaerobic conditions in the sediment; dysoxic bottom conditions resulted in impoverished mollusc faunas.

Conditions became more favourable for settlement by lymnocyprids again in the upper part of the sequence. An increase in sand and fine gravel content and lignitic layers suggests a general shallowing trend from 30 to 23 m in RKB 5260. Consequently, the mollusc fauna becomes more diverse, and species of shallow sublittoral and coastal deltaic lake environments appear (e.g. *Socenia soceni*, *Goniochilus haidingeri* and *Melanopsis* sp.). Similar assemblages have been also described from the near-shore settings of Lake Pannon in the Vienna Basin (Papp, 1953) and the Eisenstadt-Sopron Basin (Harzhauser et al., 2002).

The similarity in the MS patterns in Sequence 2 allows a direct correlation of the core intervals at 38–24 m in RKB 5260 and 32–17 m in RKB 7260 (Fig. 10). The lower part with pyrite concretions is characterised by high values in both cores, followed by a rapid shift towards lower values at 27 m in RKB 7260 and at 33 m in RKB 5260. At 24.3 m in RKB 5260 and 17 m in RKB 7260, the MS patterns become very dissimilar and a correlation becomes impossible. No sedimentological and palaeontological change is seen in RKB 7260 above this point up to the sandstone layer at 12.1 m. The interval above is characterised by increasing amounts of sand and thus differs from the underlying clays. Therefore, we tentatively place the boundary between PA2 and PA3 in RKB 7260 at 12.1 m. This implies that the more basal RKB 7260 preserved about 5 m more sediment of PA2, which is missing in RKB 5260, where already lignitic sand of PA3 is cored at the same horizon.

Sequence PA3 starts with lignitic sand and lignite layers at 24.3 m in RKB 5260. In terms of MS values, the base of PA3 coincides with an abrupt shift towards higher values. As discussed earlier, the onset of sandstone intercalations at 12.1 m might form the base of PA3 in RKB 7260. The barren intervals and the presence of rare lymnocyprids point to an unfavourable environment, probably with dysoxic conditions in the medium-deep sublittoral zone for the upper part of PA2 in RKB 7260, whereas the rich mollusc fauna in the base of PA3 in RKB 7260, with numerous lymnocyprids, dreissenids and *Socenia socenia*, indicates an oxic near-shore environment.

5.3 Hinterland vegetation

The vegetation around the Sarmatian Sea and Lake Pannon was mainly characterised by a diverse deciduous forest (*Quercus*, *Fagus*, *Ulmus*, *Carya* and *Juglans*), with few evergreen taxa (Arecaceae, Oleaceae, Myrtaceae and *Tsuga*) (e.g. Wilen and Tiner, 1993; Thompson et al., 1999a, b; Brach and Song, 2006; de Rigo et al., 2016). Pollen grains of riparian vegetation are rare, but the presence of *Nyssa* as well as certain Taxoidoideae pollen grains indicates at least a small amount of coastal forested wetlands (Thompson et al., 1999a, b; Averyanov et al., 2009; Lodge, 2016), inhabited also by members of the Cyperaceae, Chenopodioideae or Poaceae (Willard et al., 2001; Britton and Crivelli, 1993). Equally rare are representatives of vegetation from inflowing rivers such as *Sparganium* or

Salix. Elements of a higher elevation are mainly represented by *Abies* and *Picea* (Jimenez-Moreno et al., 2008; de Rigo et al., 2016). As all pollen counts show a minimum of ~69.4% of saccate Pinaceae, long-distance transport of all pollen grains is likely and indicates a large distance to the shoreline (e.g. Hopkins, 1950; Traverse and Ginsberg, 1966; Smirnov et al., 1996).

The highest abundance of warm temperate-to-tropical elements clearly occurs in the Sarmatian sample RKB 5300-38/37. These are represented by the highest numbers of Arecaceae, Sapotaceae, *Liquidamber*, *Platycarya*, *Engelhardia*, Hamamelidaceae, Myrtaceae as well as the Fabaceae *Podocarpium podocarum* (= *Fupingopollenites wackersdorfensis*) (Planderova, 1990; Thompson et al., 1999a, b; Bruch and Song, 2006).

Taxa indicating a warm climate, such as *Eleagnus*, *Platycarya*, *Reevesia*, Rhamnaceae, *Zanthoxylum* and *Symplocos*, are also present in the Pannonian samples (RKB 5300-28/29, RKB 7260-53/54 and RKB 7260-51/50). Although some of these taxa are known from other Pannonian localities (e.g. Harzhauser et al., 2008; Kern et al., 2012a, b, 2013), the presence of these in an offshore core could also be the result of reworking (e.g. *Tricolporopollenites striatoreticulatus* and *Liliacidites* sp. in sample RKB 5300-29/28; see also Planderova, 1990). Generally, lower diversity and poor preservation suggest a more distal position of RKB 7260 compared to RKB 5300, which agrees with its assumed more-basinal palaeogeographic position.

The co-existence approach (CA) was applied for the Sarmatian sample RKB 5300-38/37 and for the Pannonian samples RKB 5300-29/28, RKB 7260-54/53, RKB 7260-51/50 and RKB 7260-41/40.

For the Sarmatian and the Pannonian samples, the CA indicates a mean annual temperature ranging from 13.8 to 21.7°C and a seasonal variation of 3.1–15.1°C for the coldest month's temperature and 23.6–28.3°C for the warmest month. The mean annual precipitation ranges from 740 to 1551 mm for the Sarmatian assemblage and from 740 to 1724 mm for the Pannonian ones. The Sarmatian dry season ranges from 17 to 64 mm and from 8 to 93 mm for the Pannonian assemblages. Similarly, the wettest month is similar for both time slices, ranging from 150 to 241 mm for the Sarmatian and from 150 to 343 mm for the Pannonian. Rainfall was more likely during the warmer season as the precipitation of the warmest month ranges from 79 to 189 mm (Sarmatian) and 79 to 224 mm (Pannonian).

Since the CA considers only the presence/absence of taxa, long-distance transport of the pollen results in reduced diversity, which negatively affects the accuracy of the CA intervals. Although our data are comparable with those in previous studies (Bruch et al., 2004; 2006; Harzhauser et al., 2008; Jimenez-Moreno et al., 2008), the co-existence intervals for the RKB cores are less precise. Therefore, the CA results in wide and rather similar climate interpretations for the Sarmatian and the early Pannonian. Overall, however, the number of thermophilous taxa is higher during the late Sarmatian.

5.4 Authigenic tubular pyrite aggregates as indicator for severe sub-surface anoxia

The interval of about 3–4 m thickness with pyrite tubes is a striking feature appearing more or less in the middle of the PA1 sequence. Such pyrite tubes have been frequently detected close to the surface in near-anaerobic marine shelf sediments (e.g. Sassen et al., 2004; Xie et al., 2013; Zhang et al., 2014; Lin et al., 2014, 2016). Sulphate-driven anaerobic oxidation of methane (AOM) by methanotrophic archaea and sulphate-reducing bacteria is the favoured model to explain the authigenic formation of tubular pyrite aggregates in marine sediments (McGlynn et al., 2015; Wegener et al., 2015; Zhang et al., 2014; Lin et al., 2016). AOM, however, is not restricted to marine environments but is also documented for brackish water and freshwater sediments (Wu et al., 2009; Deutzmann and Schink, 2011; Egger et al., 2015). In lakes, methane is mainly formed biologically by methanogenic archaea in anoxic environments (Bastviken et al., 2004; Deutzmann and Schink, 2011), thus providing the source for AOM.

The initial cause for the tubular morphology of the pyrite aggregates is still under discussion. The tubes were interpreted as pseudomorphoses of large sulphide-oxidising bacteria (Sassen et al., 2004) and as micro-burrows (Rao et al., 2008). Burrows are unlikely explanations for the Pannonian pyrite tubes as the various ichno-fossils described from Lake Pannon deposits are much larger in diameter (Magyar et al., 2006; Hyžný et al., 2015). Similar to the Pannonian pyrite tubes, Lu et al. (2007) and Lin et al. (2016) observed branching in some tubes and therefore interpreted them as micro-channels created by upward-moving fluids in the sediment.

In any case, the pyrite formation occurs within the sediment at some distance from the sediment surface, ranging from few tens of centimetres to several metres (Lin et al., 2014, 2016; Zhang et al., 2014). Therefore, a temporal offset between the time of pyrite formation and the co-occurring sediment and fossil content of the respective sample has to be considered. This temporal offset explains the mass occurrence of ostracods in some of the samples from the pyrite interval. Dysoxic conditions seem to have also persisted during most of the deposition of the upper part of this first Pannonian sequence, as reflected by the near absence of molluscs. At the same time, anoxic conditions developed in the sediment, giving rise to AOM.

Interestingly, no such pyrite tubes have been described from other dysoxic or anoxic deposits of Lake Pannon (e.g. Starek and Pipík, 2007; Magyar et al., 2006; Harzhauser et al., 2008; Kern et al., 2012a, b). All these records, however, are younger than the PA1 sequence, ranging roughly from 10 to 8 Ma. At that time, the salinity of the initially brackish lake water had already decreased (Geary et al., 1989; Mátyás et al., 1996; Harzhauser et al., 2007), and the climate had shifted towards humid conditions (Harzhauser et al., 2007; Böhme et al., 2008). Maybe changes in water chemistry, such as availability of

sulphate, played a major role in the formation of tubular pyrite aggregates in Lake Pannon.

5.5 Gaps, temporal coverage and tectonics

Based on cross-correlations with cyclo-stratigraphic and/or palaeomagnetic core data from the Vienna Basin, the Sarmatian and Pannonian biozones were tentatively correlated with the international chronostratigraphic chart by Harzhauser and Piller (2004), Harzhauser et al. (2004), Lirer et al. (2009) and Paulissen et al. (2011). Although these proposals may be criticised for some vague and weak points, they provide rough constraints for the time represented by each of the biozones (Fig. 11). Accordingly, the upper *Ervilia* Zone spans an interval from ~12.1 to ~11.9 Ma (Harzhauser and Piller, 2004). The upper Sarmatian *Sarmatimactra* Zone and the lowermost Pannonian Zone (Zone A of Papp, 1951) are missing in the cores. The subsequent *Mytilopsis ornithopsis* Zone (without Zone A) corresponds to an interval of ~11.5–11.2 Ma (Harzhauser et al., 2004; Neubauer et al., 2013b), indicating a gap of at least 400 ka between the Sarmatian SA2 and Pannonian PA1 sequences in the RKB boreholes. Within the *M. ornithopsis* Zone, the first major transgression of Lake Pannon occurred between 11.308–11.263 Ma (Gross et al., 2011), which is a likely time frame for the PA1 sequence.

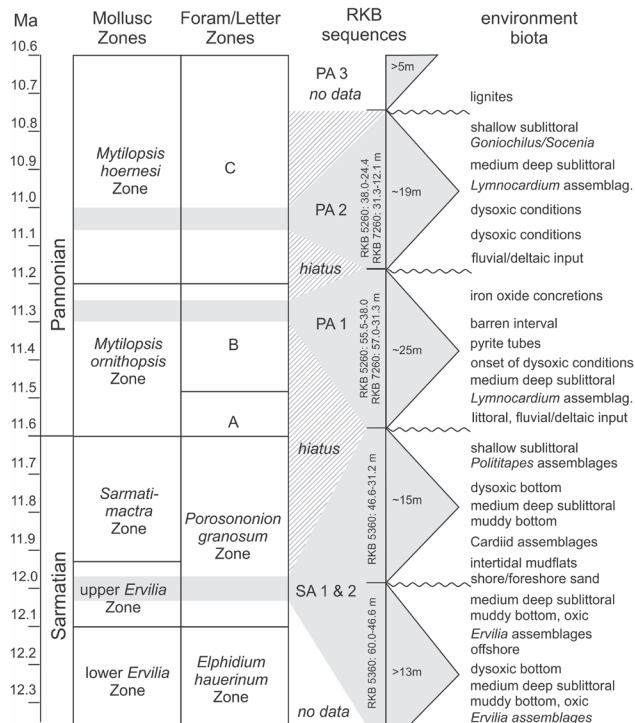


Figure 11: Chronostratigraphic and biostratigraphic correlations of the SA1, SA2, PA1 and PA2 sequences (in grey), indicating maximum thickness in the RKB cores and typical biotic and palaeo-environmental features. Note that the correlation of the sequences within the biozones is somewhat tentative, and they are correlated with transgressive phases of the Paratethys Sea and Lake Pannon. The temporal coverage of each sequence follows sediment accumulation rate estimates with large error bars (see Discussion section).

The next hiatus occurs at the boundary between PA1 and PA2, separating the *M. ornithopsis* Zone from the overlying *M. hoernesii* Zone. The *M. hoernesii* Zone covers roughly an interval from 11.2 to 10.6 Ma. The boundary between the two zones is marked by a lake-level fluctuation (Kováč et al., 1998), expressed by the progradation of large fluvial deltas into the Vienna Basin (Harzhauser et al., 2004). The first major flooding of this zone, which also reached higher parts of the basin margin, such as the Mistelbach Block north of Vienna, occurred around 11.1–11.0 Ma (Harzhauser, 2009). Therefore, we infer a further hiatus spanning ~100–200 ka in the RKB cores.

Within these biostratigraphically defined frame, further constraints can be deduced from the thickness of each sequence and assumed sedimentation rates. The Sarmatian sequences SA1 and SA2 reach about 13 and 15 m in RKB 3000. Both are incomplete, as the base of SA1 was not cored and the top of SA2 is truncated by the overlying PA1. Similar thicknesses are observed in the neighbouring borehole RKB 5320 (Fig. 9), which also reveals an additional underlying Sarmatian sequence (not studied herein). Considering the first Pannonian sequence to be coeval in all cores, with distinct marker horizons such as the negative MS peak and the zone of pyrite formation, the result shows that sedimentation in RKB 7260 commenced earlier than in RKB 5300/5260. Thus, the lowermost Pannonian deposits in RKB 7260, from ~51.0–57.0 m, are missing in the other cores, which fits the assumed more-distal, offshore setting of RKB 7260. In this core, PA1 reaches ~25 m and PA2 ~19 m in thickness (Figs 2, 11). A nearly identical thickness of PA1 is documented from the neighbouring boreholes RKB 7280–7320 (Fig. 9). The sedimentation rates for these sequences cannot be reconstructed directly due to the lack of absolute tie points. Nevertheless, several papers dealt with Sarmatian and Pannonian sediment accumulation rates in the Vienna Basin. Based on magnetostratigraphically backboned cyclostratigraphy, Paulissen et al. (2011) reconstructed very high sedimentation rates of 1.2 m/ka for the late Sarmatian and very low rates of 0.3 m/ka for the lacustrine Pannonian. These data were derived from a borehole situated close to a tectonically active zone off the palaeocoast and might not be representative for more coastal settings. Lirer et al. (2009) arrived at an average sedimentation rate of ~0.65 m/ka for the Sarmatian and Pannonian for a borehole situated at the junction from coastal shoal to basin. Even higher sedimentation rates of 0.73 m/ka were proposed by Kern et al. (2012a) for the middle Pannonian for a setting below wave base. This borehole was situated at a distance of ~5 km from the shore within the sphere of influence of a delta (Harzhauser et al., 2008). Applying the Lirer/Kern estimates results in a duration of ~18–20 kyr for SA1 and ~21–23 kyr for SA2. PA1 represents ~34–38 kyr and PA2 ~26–29 kyr. Without additional constraints and tie points, this hypothesis cannot be tested. Nevertheless, these calculations illustrate that surprisingly little time is represented by the sediments and that the gaps are

much larger than would be deduced from biostratigraphy alone (Fig. 11).

Using the coeval peaks in the MS pattern to correlate the cores reveals a tectonic offset of 25 m between RKB 5300 and RKB 5260. With respect to the short distance between the boreholes of ~300 m, a single – so far undetected – fault seems to separate the two blocks. A second fault separates RKB 5300 from RKB 5320 in the west (Fig. 9). Both faults are part of a SSW-NNE-trending fault branching off from the junction between the Bisamberg Fault in the north and the Leopoldsdorf Fault system in the south and east (Fig. 1). This large unnamed fault, which is indicated on the tectonic map by Kröll and Wessely (1993) and Lee and Wagreich (2016), separates the basin margin with RKB 5260 and RKB 5300 from the Vösendorf Basin in which RKB 7260 was drilled. The tectonic offset between RKB 5260 and RKB 7260 ranges ~17 m. For both faults, the tectonic activity must have postdated the Pannonian *M. hoernes* Zone and is thus younger than ~10.6 Ma, corresponding to the middle Pannonian tectonic subsidence phase of Hölzel et al. (2008).

6. Conclusions

The investigated boreholes from the City of Vienna allow a detailed reconstruction of the marine and lacustrine depositional environments during the late Sarmatian and early Pannonian periods at the margin of the Vienna Basin. At least three Sarmatian T-R sequences, each reaching ~15 m thickness, are recorded from the westernmost cores. Of these, the upper two sequences have been studied herein, and these reveal two rapid transgressions peaking in offshore conditions, with medium-deep sublittoral soft bottom environments at water depth of several tens of metres. A large distance from the shore is also indicated by the pollen assemblages, which are strongly dominated by *Pinus*. Both sequences span a narrow part of the upper *Ervilia* Zone; no younger Sarmatian deposits are recorded in any of the cores and a hiatus of ~600 ka separates the Sarmatian from the subsequent Pannonian deposits. A major transgression during the early Pannonian (*M. ornithopsis* Zone) flooded the area rapidly again. In more distal settings, sedimentation commenced slightly earlier with clay and silt, whereas coarse sand, gravel and reworked Sarmatian fauna characterised the marginal areas. Soon, sublittoral offshore conditions established in the entire study area, again indicated by low diversity of the pollen assemblages. Hospitable environmental conditions on the muddy lake bottom, which was settled by numerous lymnocyprids, soon deteriorated, leading to a severe decline of benthic molluscs. During the maximum flooding, the lake bottom became hostile. Sulphate-driven anaerobic oxidation of methane by archaea and sulphate-reducing bacteria became widespread within the sediment, resulting in a distinct horizon of tubular pyrite aggregates, which have not been detected in Lake Pannon so far. Another hiatus of at least 200 ka separates these deposits from the second Pannonian sequence, which is correlated with

the *M. hoernes* Zone. The second transgression by Lake Pannon on the basin margin led again to medium-deep sublittoral conditions and dysoxic bottom conditions, but shallow sublittoral conditions with a rich benthic mollusc fauna established soon during subsequent shallowing, which peaked in lignite formation. A third Pannonian sequence, belonging still to the *M. hoernes* Zone, is only partly recorded by the cores and is not discussed in detail.

Throughout the investigated boreholes, the two Pannonian sequences reach a thickness of ~19–25 m. Sedimentation rates from other Pannonian sections in the Vienna Basin suggest a duration of <40 ka for the formation of each of these sequences. Consequently, the seemingly continuous cores captured relatively short glimpses of geological time. Only careful biostratigraphic and palaeo-ecological analyses of the cores are able to detect these hidden gaps, which may turn into pitfalls for palaeomagnetism.

Acknowledgements

This paper is part of the project “The Sarmatian/Pannonian Extinction Event within the City of Vienna”, which was supported by the Cultural Department of the City of Vienna and the Commission for Geosciences of the Austrian Academy of Sciences. We thank Vera Hammer (Natural History Museum, Vienna) for the X-ray diffraction analysis of the pyrite tubes and Jörn Peckmann (University Hamburg) for discussions on the origin of these structures.

We thank Gerhard Hobiger (Department of Geochemistry, Geological Survey Austria) for preparation of palynological samples and Michael Wagreich (University of Vienna) and Imre Magyar (Hungarian Natural History Museum, Budapest) for constructive reviews.

References

- Albano P.G., Filippova N., Steger J., Kaufman D.S., Tomašových A., Stachowitsch M. and Zuschin M., 2016. Oil platforms in the Persian (Arabian) Gulf: living and death assemblages reveal no effects. *Continental Shelf Research*, 121, 21–34. <https://doi.org/10.1016/j.csr.2015.12.007>
- Averyanov, L.V., Phan, E.L., Nguyen, T.H., Nguyen, S.K., Nguyen, T.V. and Pham, T.D., 2009. Preliminary observations of native *Glyptostrobus pensilis* (Taxodiaceae) stands in Vietnam. *Taiwania*, 54, 191–212. [https://doi.org/10.6165/tai.2009.54\(3\).191](https://doi.org/10.6165/tai.2009.54(3).191)
- Avnaim-Katav, S., Almogi-Labin, A., Sandler, A. and Sivan, D., 2013. Benthic foraminifera as palaeoenvironmental indicators during the last million years in the eastern Mediterranean inner shelf. *Palaeogeography, Palaeoclimatology, Palaeoecology*, 386, 512–530. <https://doi.org/10.1016/j.palaeo.2013.06.019>
- Bandel, K., Sivan, N. and Heller, J., 2007. *Melanopsis* from Al-Qarn, Jordan Valley (Gastropoda: Cerithioidea). *Paläontologische Zeitschrift*, 81, 304–315.

- Bastviken D., Cole J., Pace M. and Tranvik L., 2004. Methane emissions from lakes: dependence of lake characteristics, two regional assessments, and a global estimate. *Global Biogeochemical Cycles*, 18, 1–12.
- Bilgin, F. H., 1973. Studies on the functional anatomy of *Melanopsis praemorsa* (L.) and *Zemelanopsis trifasciata* (Gray). *Proceedings of the Malacological Society of London*, 40, 379–393. <http://onlinelibrary.wiley.com/doi/10.1029/2004GB002238/abstract>
- Böhme, M., Ilg, A. and Winkelhofer, M., 2008. Late Miocene “washhouse” climate in Europe. *Earth and Planetary Science Letters*, 275, 393–440. <https://doi.org/10.1016/j.epsl.2008.09.011>
- Borgh, M., ter, Vasiliev, I., Stoica, M., Knežević, S., Matenco, L., Krijgsman, W., Rundić, L. and Cloetingh, S., 2013. The isolation of the Pannonian basin (Central Paratethys): New constraints from magnetostratigraphy and biostratigraphy, *Global and Planetary Change* 103 99–118. <https://doi.org/10.1016/j.gloplacha.2012.10.001>
- Bosch, D.T., Dance, S.P., Moolenbeek, R.G and Oliver, P.G., 1995. *Seashells of Eastern Arabia*. Motivate Publishing, Dubai, 296 pp.
- Brach, A.R. and Song, H., 2006. eFloras: New directions for online floras exemplified by the Flora of China Project. *Taxon*, 55, 188–192.
- Britton, R.H. and Crivelli, A.J., 1993. Wetlands of southern Europe and North Africa: Mediterranean wetlands. In: Whigham, D.F., Dykyjová, D. and Hejný, S. (Eds.): *Handbook of Vegetation Science, Wetlands of the World I: Inventory, Ecology and Management*. Kluwer Academic Publishers, Dordrecht, pp. 129–194. ISBN 978-94-015-8212-4
- Brix, F., 1988. Jungtertiär und Quartär. In: F. Brix and B. Plöschinger (eds.), *Erläuterungen zu Blatt 76 Wiener Neustadt. Geologische Karte der Republik Österreich 1:50.000*, Geologische Bundesanstalt Wien, pp. 29–85.
- Bruch, A.A., Utescher, T., Alcalde Olivares C., Dolakova, N. and Mosbrugger, V., 2004. Middle and Late Miocene spatial temperature patterns and gradients in Central Europe – preliminary results based on palaeobotanical climate reconstructions. *Courier Forschungsinstitut Senckenberg*, 249, 15–27.
- Bruch, A.A., Utescher, T., Mosbrugger, V., Gabrielyan, I. and Ivanov, D.A., 2006. Late Miocene climate in the circum-Alpine realm - a quantitative analysis of terrestrial palaeofloras. *Palaeogeography, Palaeoclimatology, Palaeoecology*, 238, 270–280. <https://doi.org/10.1016/j.palaeo.2006.03.028>
- Bruyne, R.H. de, van Leeuwen, S.J., Gmelig Meyling, A.W. and Daan, R., 2013. *Schelpdieren van het Nederlandse Noordzeegebied. Ecologische atlas van de mariene weekdieren (Mollusca)*. Tirion Uitgevers, Utrecht en Stichting Anemoon, Lisse, 414 pp. <http://www.anemoon.org/flora-en-fauna/soorteninformatie/soorten/id/484/gouden-tapijtschelp>
- Catuneanu, O., Galloway, W.E., Kendall, C.G.St.C., Miall, A.D., Posamentier, H.W., Strasser, A. and Tucker, M.E., 2011. Sequence Stratigraphy: methodology and nomenclature. *Newsletters on Stratigraphy*, 44, 173–245. <https://doi.org/10.1127/0078-0421/2011/0011>
- Cernajsek, T., 1974. Die Ostracodenfaunen der Sarmatischen Schichten in Österreich. In: A. Papp, F. Marinescu and J. Seneš (eds.), *Chronostratigraphie und Neostatotypen, Miozän der Zentralen Paratethys*. Verlag der Slowakischen Akademie der Wissenschaften, Bratislava, 4 (M5), pp. 458–491.
- Cicha, I., Rögl, F., Rupp, C. and Ctyroky, J., 1998. Oligocene-Miocene foraminifera of the Central Paratethys. *Abhandlungen der Senckenbergischen Naturforschenden Gesellschaft*, 549, 1–325.
- Čtyroký, P., 2000. Nové litostratigrafické jednotky panonu vídeňské pánve na Moravě. *Věstník Českého geologického ústavu*, 75, 159–170.
- Cziczser I., Magyar I., Pipík R., Böhme M., Čorić S., Bakrač K., Sütő-Szentai M., Lantos M., Babinszki E. and Müller P., 2009. Life in the sublittoral zone of long-lived Lake Pannon: paleontological analysis of the Upper Miocene Szák Formation, Hungary. *International Journal of Earth Science*, 98, 1741–1766. <https://doi.org/10.1007/s00531-008-0322-3>
- Deutzmann, J.S. and Schink, B., 2011. Anaerobic oxidation of methane in sediments of Lake Constance, an oligotrophic freshwater lake. *Applied Environmental Microbiology*, 77, 4429–4436. <https://doi.org/10.1128/AEM.00340-11>
- Egger, M., Rasigraf, O., Sapart, C.J., Jilbert, T., Jetten, M.S.M., Röckmann, T., van der Veen, C., Bândă, N., Kartal, B., Ettwig, K.F., Slomp, C.P., 2015. Iron-mediated anaerobic oxidation of methane in brackish coastal sediments. *Environmental Science and Technology*, 49, 277–283. <http://pubs.acs.org/doi/abs/10.1021/es503663z>
- Elečko, M. and Vass, D., 2001. Litostratigrafické jednotky usadenín sarmatského veku vo viedenskej panve. *Mineralia Slovaca*, 33, 1–6.
- Fægri, K. and Iversen, J., 1989. *Textbook of Pollen Analysis*, 4th Edition. Wiley, Chichester, 328 pp.
- Filipescu, S. and Popa, M., 2001. Biostratigraphic and palaeoecologic significance of the macro- and microfossils assemblages in the Borod Formation (Eastern Borod Depression, North-West Romania). *Acta Palaeontologica Romaniaae*, 3, 135–148.
- Filipescu, S., Wanek, F., Miclea, A., De Leeuw, A. and Vasiliev, I., 2011. Micropaleontological response to the changing paleoenvironment across the Sarmatian-Pannonian boundary in the Transylvanian Basin (Miocene, Oarba de Mure section, Romania). *Geologica Carpathica*, 62, 91–102. <https://doi.org/10.2478/v10096-011-0008-9>
- Fuchs, W., 1985. *Österreichische Geologische Karte 59, Wien 1:50.000*. Geologische Bundesanstalt, Wien.
- Geary, D.H., Hunt, G., Magyar, I. and Schreiber, H., 2010. The paradox of gradualism: phyletic evolution in two lineages of lymnocardiid bivalves (Lake Pannon, central Europe). *Paleobiology*, 36, 592–614. <https://doi.org/10.1666/08065.1>
- Geary, D.H., Rich, J.A., Valley, J.W. and Baker, K., 1989. Stable isotopic evidence of salinity change: influence

- on the evolution of melanopsid gastropods in the Late Miocene Pannonian basin. *Geology*, 17, 981–985. [https://doi.org/10.1130/0091-7613\(1989\)017<0981:SIEOSC>2.3.CO;2](https://doi.org/10.1130/0091-7613(1989)017<0981:SIEOSC>2.3.CO;2)
- Gofas, S. Moreno, D. and Salas, C., 2011. *Moluscos marinos de Andalucía*. Universidad de Málaga, Málaga. 2 volumes, 798 pp.
- Gross, M., 2004. Zur Ostracodenfauna (Crustacea), Paläoökologie und Stratigrafie der Tongrube Mataschen (Unter-Pannonium, Steirisches Becken, Österreich). *Joannea Geologie und Paläontologie*, 5, 49–129.
- Gross, M., 2006. Mittelmiozäne Ostracoden aus dem Wiener Becken (Badenium/Sarmatium, Österreich). *Österreichische Akademie der Wissenschaften, Schriftenreihe der Erdwissenschaftlichen Kommissionen, Sonderband 1*, 1–224. ISBN 978-3-7001-3650-7
- Gross, M., Piller, W.E., Scholger, R. and Gitter, F., 2011. Biotic and abiotic response to palaeoenvironmental changes at Lake Pannons' western margin (Central Europe, Late Miocene). *Palaeogeography, Palaeoclimatology, Palaeoecology*, 312, 181–193. <https://doi.org/10.1016/j.palaeo.2011.10.010>
- Hammer, Ø. and Harper, D.A.T., 2006. *Paleontological Data Analysis*. Blackwell Publishing, Oxford, 351 pp.
- Hammer, Ø., Harper, D.A.T. and Ryan, P.D., 2001. PAST: paleontological statistics software package for education and data analysis. *Palaeontologia Electronica*, 4, 1–9.
- Harzhauser, M., 2009. The early Vallesian vertebrates of Atzelsdorf (Late Miocene, Austria). 2. *Geology. Annalen des Naturhistorischen Museums in Wien*, 111A, 479–488.
- Harzhauser, M. and Piller, W.E., 2004. The Early Sarmatian – hidden seesaw changes. *Courier des Forschungsinstitutes Senckenberg*, 246, 89–112.
- Harzhauser, M., Piller, W.E., 2007. Benchmark data of a changing sea. - *Palaeogeography, Palaeobiogeography and Events in the Central Paratethys during the Miocene*. *Palaeogeography, Palaeoclimatology, Palaeoecology*, 253, 8–31. <https://doi.org/10.1016/j.palaeo.2007.03.031>
- Harzhauser, M. and Piller, W.E., 2010. Molluscs as a major part of subtropical shallow-water carbonate production – an example from a Middle Miocene oolite shoal (Upper Serravallian, Austria). *International Association of Sedimentologists, Special Publications*, 42, 185–200. <https://doi.org/10.1002/9781118398364.ch11>
- Harzhauser, M., Daxner-Höck, G. and Piller, W.E., 2004. An integrated stratigraphy of the Pannonian (Late Miocene) in the Vienna Basin. *Austrian Journal of Earth Science*, 95/96, 6–19.
- Harzhauser, M., Kowalke, T. and Mandic, O., 2002. Late Miocene (Pannonian) gastropods of Lake Pannon with special emphasis on early ontogenetic development. *Annalen des Naturhistorischen Museums Wien*, 103A, 75–141.
- Harzhauser, M., Latal, C. and Piller, W.E., 2007. The stable isotope archive of Lake Pannon as a mirror of Late Miocene climate change. *Palaeogeography, Palaeoclimatology, Palaeoecology*, 249, 335–350. <https://doi.org/10.1016/j.palaeo.2007.02.006>
- Harzhauser, M., Kern, A., Soliman, A., Minati, K., Piller, W.E., Danielopol, D.L. and Zuschin, M., 2008. Centennial- to decadal scale environmental shifts in and around Lake Pannon (Vienna Basin) related to a major Lake Miocene lake level rise. *Palaeogeography, Palaeoclimatology, Palaeoecology*, 270, 102–115. <https://doi.org/10.1016/j.palaeo.2008.09.003>
- Hölzel, M., Wägrich, M., Faber, R. and Strauss, P., 2008. Regional subsidence analysis of the Vienna Basin (Austria). *Austrian Journal of Earth Sciences*, 101, 88–98.
- Hopkins, J.S., 1950. Differential flotation and deposition of coniferous and deciduous tree pollen. *Ecology*, 31, 633–641. <https://doi.org/10.2307/1931580>
- Hyžný, M., Šimo, V. and Starek, D., 2015. Ghost shrimps (Decapoda: Axiidea: Callianassidae) as producers of an Upper Miocene trace fossil association from sublittoral deposits of Lake Pannon (Vienna Basin, Slovakia). *Palaeogeography, Palaeoclimatology, Palaeoecology*, 425, 50–66. <https://doi.org/10.1016/j.palaeo.2015.02.012>
- Jekelius, E., 1944. Sarmat und Pont von Soceni (Banat). *Memoriile Institutului Geologic al României*, 5, 1–167.
- Jiménez-Moreno, G., Fauquette, S. and Suc, J.-P., 2008. Vegetation, climate and paleoaltitude reconstructions of eastern alpine mountain ranges during the Miocene based on pollen records from Austria, Central Europe. *Journal of Biogeography*, 35, 1638–1649. <http://onlinelibrary.wiley.com/doi/10.1111/j.1365-2699.2008.01911.x/epdf>
- Jiříček, R., 1974. Biostratigraphische Bedeutung der Ostracoden des Sarmats s. str. In: A. Papp, F. Marinescu and J. Seneš (eds.), *Chronostratigraphie und Neostatotypen, Miozän der Zentralen Paratethys*. Verlag der Slowakischen Akademie der Wissenschaften, Bratislava, 4 (M5), pp. 434–457.
- Jiříček, R., 1985. Die Ostracoden des Pannonien. In: A. Papp, A. Jámboř and F.F. Steininger (eds.), *Chronostratigraphie und Neostatotypen, Miozän der Zentralen Paratethys*. Ungarische Akademie der Wissenschaften, Budapest, 7 (M6), pp. 378–425.
- Jiříček, R. and Riha, J., 1991. Correlation of Ostracod Zones in the Paratethys and Tethys. *Saito Ho-on Kai Special Publications (Proceedings of Shallow Tethys)*, 3, 435–457.
- Karrer, F., 1877. *Geologie der Kaiser Franz Josefs Hochquellen-Wasserleitung: Eine Studie in den Tertiärbildungen am Westrande des Alpenen Theiles der Niederung von Wien*. Abhandlungen der k.k. Geologischen Reichsanstalt, 9, 1–410.
- Kern, A.K., Harzhauser, M., Piller, W.E., Mandic, O. and Soliman, A., 2012a. Strong evidence for the influence of solar cycles on a Late Miocene lake system revealed by biotic and abiotic proxies. *Palaeogeography, Palaeoclimatology, Palaeoecology*, 329–330, 124–136. <https://doi.org/10.1016/j.palaeo.2012.02.023>
- Kern, A.K., Harzhauser, M., Soliman, A., Piller, W.E. and Gross, M., 2012b. Precipitation driven decadal scale decline and recovery of wetlands of Lake Pannon during the Tortonian. *Palaeogeography, Palaeoclimatology,*

- Palaeoecology, 317–318, 1–12. <https://doi.org/10.1016/j.palaeo.2011.11.021>
- Kern, A.K., Harzhauser, M., Soliman, A., Piller, W.E., Mandic, O., 2013. High resolution analysis of Upper Miocene lake deposits: Evidence for the influence of Gleissberg-band-solar forcing. *Palaeogeography, Palaeoclimatology, Palaeoecology*, 370, 167–183. <http://dx.doi.org/10.1016/j.palaeo.2012.12.005>
- Klaus, W. 1984. Zur Mikroflora des Unter-Sarmat am Alpen-Südostrand. *Beiträge zur Paläontologie von Österreich*, 11, 289–419.
- Kollmann, K., 1960. Cytherideinae und Schulerideinae n. subfam. (Ostracoda) aus dem Neogen des östl. Oesterreich. *Mitteilungen der Geologischen Gesellschaft in Wien*, 51, 89–195.
- Kováč, M., Baráth, I., Kováčova-Slamková, M., Pipík, R., Hlavatý, I., Hudáčková, N., 1998. Late Miocene paleoenvironments and sequence stratigraphy: northern Vienna Basin. *Geologica Carpathica*, 49, 445–458.
- Krenmayr, H.G. and Schnabel, W., 2002. Intramontane Becken (T6-T7). In: Schnabel, W. (Ed.): *Geologische Karte von Niederösterreich 1: 200.000. Legende und kurze Erläuterung*, Geologische Bundesanstalt, Wien, pp. 30–33.
- Kröll, A. and Wessely, G., 1993. Wiener Becken und angrenzende Gebiete - Strukturmarte-Basis der tertiären Beckenfüllung. *Geologische Themenkarte der Republik Österreich 1:200.000*, Geologische Bundesanstalt, Wien.
- Krstić, N., 1985. Ostracoden im Pannonien der Umgebung von Belgrad. In: A. Papp, A. Jámboer and F.F. Steininger (eds.), *Chronostratigraphie und Neostatotypen, Miozän der Zentralen Paratethys*. Ungarische Akademie der Wissenschaften, Budapest, 7 (M6), pp. 103–143.
- Langer, M.R., 1993. Epiphytic foraminifera. *Marine Micropaleontology*, 20, 235–265. [https://doi.org/10.1016/0377-8398\(93\)90035-V](https://doi.org/10.1016/0377-8398(93)90035-V)
- Latal, C., Piller, W.E. and Harzhauser, M., 2006. Shifts in oxygen and carbon isotope signals in marine molluscs from the Central Paratethys (Europe) around the Lower/Middle Miocene transition. *Palaeogeography, Palaeoclimatology, Palaeoecology*, 231, 347–360. <https://doi.org/10.1016/j.palaeo.2005.08.008>
- Lee, E.Y. and Wagreich, M., 2016. Polyphase tectonic subsidence evolution of the Vienna Basin inferred from quantitative subsidence analysis of the northern and central parts. *International Journal of Earth Sciences*, 106, 687–705. <https://doi.org/10.1007/s00531-016-1329-9>
- Lin, Z., Sun, X., Lu, Y. and Lu, H., 2014. Heavy sulfur isotopic composition of authigenic pyrite in the sediments of Shenhu area, South China Sea. *Acta Geologica Sinica*, 88, Supplementum 2, 1569–1570. https://doi.org/10.1111/1755-6724.12384_9
- Lin, Z., Sun, X., Peckmann, J., Lu, Y., Xu, L., Strauss, H., Zhou, H., Gong, J., Lu, H. and Teichert, B.M.A., 2016. How sulfate-driven anaerobic oxidation of methane affects the sulfur isotopic composition of pyrite: A SIMS study from the South China Sea. *Chemical Geology*, 440, 26–41. <https://doi.org/10.1016/j.chemgeo.2016.07.007>
- Lirer, F., Harzhauser, M., Pelosi, N., Piller, W.E., Schmid, H.P. and Sprovieri, M., 2009. Astronomically forced teleconnection between Paratethyan and Mediterranean sediments during the Middle and Late Miocene. *Palaeogeography, Palaeoclimatology, Palaeoecology*, 275, 1–13. <https://doi.org/10.1016/j.palaeo.2009.01.006>
- Lodge, T.E., 2016. *The Everglades Handbook — Understanding the Ecosystem*. Taylor and Francis Group, Boca Raton, 4th Edition, 432 pp.
- Lozouet, P., Lesport, J.F., and Renard, P., 2001. Révision des Gastropoda (Mollusca) du Stratotype de l'Aquitainien (Miocène inf.): site de Saucats "Larrey", Gironde, France. *Cossmanniana*, Hors série, 3, 1–189.
- Lu, H.F., Chen, F., Liao, Z.L., Sun, X.M., Liu, J., Cheng, S.H. and Fu, S.Y., 2007. Authigenic pyrite rods from the core HD196A in the northeastern South China Sea. *Acta Geologica Sinica*, 81, 519–525 (in Chinese).
- Lukeneder, S., Zuschin, M., Harzhauser, M. and Mandic, O., 2011. Spatiotemporal signals and palaeoenvironments of endemic molluscan assemblages in the marine system of the Sarmatian Paratethys. *Acta Palaeontologica Polonica*, 56/4, 767–784. <https://doi.org/10.4202/app.2010.0046>
- Magyar, I., Geary, D.H. and Müller, P., 1999. Paleogeographic evolution of the Late Miocene Lake Pannon in Central Europe. *Palaeogeography, Palaeoclimatology, Palaeoecology*, 147, 151–167. [https://doi.org/10.1016/S0031-0182\(98\)00155-2](https://doi.org/10.1016/S0031-0182(98)00155-2)
- Magyar I., Müller P.M., Sztanó O., Babinszki E. and Lantos M., 2006. Oxygen-related facies in Lake Pannon deposits (Upper Miocene) at Budapest-Kőbánya. *Facies*, 52, 209–220. <https://doi.org/10.1007/s10347-005-0036-y>
- Magyar, I., Cziczser, I., Stanó, O., Dávid, Á. and Johnson, M., 2016. Palaeobiology, palaeoecology and stratigraphic significance of the Late Miocene cockle *Lymnocardium soproniense* from Lake Pannon. *Geologica Carpathica*, 67, 561–571. <https://doi.org/10.1515/geoca-2016-0035>
- Maslo, M., 2015. *Geologisch-paläontologische Untersuchung U2-Verlängerung/U5-Neubau*. Unpublished report MA 29, Vienna, 58 pp.
- Mátyás, J., Burns, S.J., Müller, P. and Magyar, I., 1996. What can stable isotopes say about salinity? An example from the Late Miocene Pannonian Lake. *Palaios*, 11, 31–39. <https://doi.org/10.2307/3515114>
- McGlynn, S.E., Chadwick, G.L., Kempes, C.P. and Orphan, V.J., 2015. Single cell activity reveals direct electron transfer in methanotrophic consortia. *Nature*, 526, 531–535. <https://doi.org/10.1038/nature15512>
- Mosbrugger, V. and Utescher, T., 1997. The coexistence approach - a method for quantitative reconstructions of Tertiary terrestrial palaeoclimate data using plant fossils. *Paleogeography, Palaeoclimatology, Palaeoecology*, 134, 61–86. [https://doi.org/10.1016/S0031-0182\(96\)00154-X](https://doi.org/10.1016/S0031-0182(96)00154-X)
- Murray, J.W., 2006. *Ecology and applications of benthic foraminifera*. Cambridge University Press, Cambridge, 426 pp.

- Neubauer, T.A., Harzhauser, M. and Mandic, O., 2013a. Phenotypic evolution in a venerid bivalve species lineage from the late Middle Miocene Central Paratethys Sea: a multi-approach morphometric analysis. *Biological Journal of the Linnean Society*, 110, 320–334. <https://doi.org/10.1111/bij.12120>
- Neubauer, T.A., Harzhauser, M. and Kroh, A., 2013b. Phenotypic evolution in a fossil gastropod species lineage: evidence for adaptive radiation? *Palaeogeography, Palaeoclimatology, Palaeoecology*, 370, 117–126.
- Neubauer, T.A., Harzhauser, M., Mandic, O. Kroh, A. and Georgopoulou, E., 2016. Evolution, turnovers and spatial variation of the gastropod fauna of the late Miocene biodiversity hotspot Lake Pannon. *Palaeogeography, Palaeoclimatology, Palaeoecology*, 442, 84–95. <https://doi.org/10.1016/j.palaeo.2012.11.025>
- Oliver, P.G., Holmes, A.M., Killeen, I.J. and Turner, J.A., 2016. Marine bivalve shells of the British Isles. *Amgueddfa Cymru - National Museum Wales*. <http://naturalhistory.museumwales.ac.uk/britishbivalves>. [Accessed: 13 October 2017].
- Olteanu, R., 1989. New ostracods in upper Neogene from Romania. *Institut de Géologie et de Géophysique Bucarest, Mémoires*, 34, 123–182.
- Papp, A., 1951. Das Pannon des Wiener Beckens. *Mitteilungen der Geologischen Gesellschaft in Wien*, 39–41 (1946–1948), 99–193.
- Papp, A., 1953. Die Molluskenfauna des Pannon des Wiener Beckens. *Mitteilungen der Geologischen Gesellschaft in Wien*, 44, 85–222.
- Papp, A., 1954. Die Molluskenfauna im Sarmat des Wiener Beckens. *Mitteilungen der Geologischen Gesellschaft in Wien*, 45, 1–112.
- Papp, A., 1956. Fazies und Gliederung des Sarmats im Wiener Becken. *Mitteilungen der Geologischen Gesellschaft in Wien*, 47 (1954), 1–97.
- Papp, A., Marinescu, F. and Senes, J., 1974 (eds), M5. Sarmatien. *Chronostratigraphie und Neostratotypen*, 4, 1–707, VEDA, Bratislava.
- Paulissen, W.E., Luthi, S.M., Grunert, P., Ćorić, S. and Harzhauser, M., 2011. Integrated high-resolution stratigraphy of a Middle to Late Miocene sedimentary sequence in the central part of the Vienna Basin. *Geologica Carpathica*, 62, 155–169. <https://doi.org/10.2478/v10096-011-0013-z>
- Planderova, E., 1990. Miocene microflora of Slovak Central Paratethys and its biostratigraphic significance. *Dionyz Stur Institute of Geology, Bratislava*, 144 pp.
- Rao, V.P., Kessarkar, P.M., Patil, S.K. and Ahmad, S.M., 2008. Rock magnetic and geochemical record in a sediment core from the eastern Arabian Sea: diagenetic and environmental implications during the late Quaternary. *Palaeogeography, Palaeoclimatology, Palaeoecology*, 270, 46–52. <https://doi.org/10.1016/j.palaeo.2008.08.011>
- de Rigo, D., Caudullo, G., Houston Durrant, T. and San-Miguel-Ayanz, J., 2016. The European Atlas of Forest Tree Species: modelling, data and information on forest tree species. In: San-Miguel-Ayanz, J., de Rigo, D., Caudullo, G., Houston Durrant, T., Mauri, A. (Eds.): *European Atlas of Forest Tree Species*. Publ. Off. EU, Luxembourg, pp. e01aa69+. <https://w3id.org/mtv/FISE-Comm/v01/e01aa69>
- Rögl, F., 1998. Foraminiferenfauna aus dem Karpat (Unter-Miozän) des Korneuburger Beckens. *Beiträge zur Paläontologie*, 23, 123–173.
- Sassen, R., Roberts, H.H., Carney, R., Milkov, A.V., DeFreitas, D.A., Lanoil, B. and Zhang, C., 2004. Free hydrocarbon gas, gas hydrate, and authigenic minerals in chemosynthetic communities of the northern Gulf of Mexico continental slope: relation to microbial processes. *Chemical Geology*, 205, 195–217. <https://doi.org/10.1016/j.chemgeo.2003.12.032>
- Schaffer, F.X., 1906. *Geologie von Wien. II. Theil*. R. Lechner, Wien, 242 pp.
- Schnabel, W., Krenmayr, H.-G., Mandl, G.W., Nowotny, A., Roetzel, R. and Scharbert, S., 2002. *Legende und kurze Erläuterungen zur geologischen Karte von Niederösterreich 1:200.000*. Geologische Bundesanstalt Wien, 47 pp.
- Schultz, O., 2003. *Bivalvia neogenica (Lucinoidea-Mactroidea)*. In: Piller, W.E. (ed.), *Catalogus Fossilium Austriae*. Verlag ÖAW, Wien, pp. 381–690.
- Schwarzahns, W., Carnevale, G., Bratishko, A., Japundžić, S. and Bradić, K., 2017a. Otoliths in situ from Sarmatian (Middle Miocene) fishes of the Paratethys. Part II: Gadidae and Lotidae. *Swiss Journal of Palaeontology*, 136, 19–43. <https://doi.org/10.1007/s13358-016-0114-5>
- Schwarzahns, W., Ahnelt, H., Carnevale, G., Japundžić, S., Bradić, K. and Bratishko, A., 2017b. Otoliths in situ from Sarmatian (Middle Miocene) fishes of the Paratethys. Part III: Tales from the cradle of the Ponto-Caspian gobies. *Swiss Journal of Palaeontology*, 136, 45–92. <https://doi.org/10.1007/s13358-016-0120-7>
- Smirnov, A., Chmura, G.L. and Lapointe, M.F., 1996. Spatial distribution of suspended pollen in the Mississippi River as an example of pollen transport in alluvial channels. *Review of Palaeobotany and Palynology*, 92, 69–81. [https://doi.org/10.1016/0034-6667\(95\)00098-4](https://doi.org/10.1016/0034-6667(95)00098-4)
- Stuchlik, L., Ziemińska-Tworzydło, M., Kohlman-Adamska, A., Grabowska, I., Ważyńska, H., Słodkowska, B. and Sadowska, A., 2001. *Atlas of pollen and spores from the Polish Neogene, Vol. 1, spores*. Polish Academy of Sciences, W Szafer Institute of Botany, Kraków, 158 pp.
- Stuchlik, L., Ziemińska-Tworzydło, M., Kohlman-Adamska, A., Grabowska, I., Ważyńska, H. and Sadowska, A., 2002. *Atlas of pollen and spores from the Polish Neogene, Vol. 2, gymnosperms*. Polish Academy of Sciences, W Szafer Institute of Botany, Kraków, 237 pp.
- Stuchlik, L., Ziemińska-Tworzydło, M., Kohlman-Adamska, A., Grabowska, I., Ważyńska, H. and Sadowska, A., 2009. *Atlas of pollen and spores from the Polish Neogene, Vol. 3, Angiosperm (1)*. Polish Academy of Sciences, W Szafer Institute of Botany, Kraków, 233 pp.
- Stuchlik, L., Ziemińska-Tworzydło, M., Kohlman-Adamska, A., Grabowska, I., Ważyńska, H. and Sadowska, A., Durska, E., 2014. *Atlas of pollen and spores from the*

- Polish Neogene, Vol. 4, Angiosperm (2). Polish Academy of Sciences, W Szafer Institute of Botany, Kraków, 466 pp.
- Suess, E., 1866. Untersuchungen über den Charakter der österreichischen Tertiärlagerungen, II. Über die Bedeutung der sogenannten brackischen Stufe oder der Cerithienschichten. Sitzungsberichte der k. Akademie der Wissenschaften, 54, 1–40.
- Sztanó, O., Krézsek, C., Magyar, I., Wanek, F., and Juhász, G., 2005. Sedimentary cycles and rhythms in a Sarmatian to Pannonian (Late Miocene) transitional section at Oarba de Mures/Marosorbó, Transylvanian Basin. *Acta Geologica Hungarica*, 48, 235–257. <https://doi.org/10.1556/AGeol.48.2005.3.1>
- Starek, D. and Pipík, R., 2007. Oxic and ?anoxic deposits of the Pannonian E (Late Miocene) from the Vienna Basin (sedimentological and micropaleontological description of sediments with *Congerina subglobosa* horizon. *Scripta Facultatis scientiarum naturalium Universitatis Masarykianae Brunensis*, 36, 25–30.
- Tauber, A.F., 1939a. Ein Aufschluß an der Grenze zwischen Sarmat und Pannon im XVII. Wiener Gemeindebezirk. *Verhandlungen der Zweigstelle Wien der Reichsstelle für Bodenforschung*, 1939, 205–209.
- Tauber, A.F., 1939b. Studien im Sarmat und Pannon des Küniglberg - Gloriettenbergzuges in Wien. *Verhandlungen der Zweigstelle Wien der Reichsstelle für Bodenforschung*, 1939, 161–183.
- Thompson, R.S., Anderson, K.H. and Bartlein, P.J., 1999a. Atlas of relations between climatic parameters and distributions of important trees and shrubs in North America – Introduction and conifers: U.S. Geological Survey Professional Paper, 1650A, 269 pp.
- Thompson, R.S., Anderson, K.H. and Bartlein, P.J., 1999b. Atlas of relations between climatic parameters and distributions of important trees and shrubs in North America – Hardwoods: U.S. Geological Survey Professional Paper, 1650B, 423 pp.
- Tóth, E., 2008. Sarmatian (Middle Miocene) ostracod fauna from the Zsámbek Basin, Hungary. *Geologica Pannonica*, 36, 101–151.
- Traverse, A. and Ginsburg, R.N., 1966. Palynology of the surface sedimentation of Great Bahamas Bank, as related to water movements and sedimentation. *Marine Geology*, 4, 417–459. [https://doi.org/10.1016/0025-3227\(66\)90010-7](https://doi.org/10.1016/0025-3227(66)90010-7)
- Utescher, T., Bruch, A.A., Erdei, B., François, L., Ivanov, D., Jacques, F.M.B., Kern, A.K., Liu, Y.-S., Mosbrugger, V. and Spicer, R.A., 2014. The Coexistence Approach—Theoretical background and practical considerations of using plant fossils for climate quantification. *Palaeogeography, Palaeoclimatology, Palaeoecology*, 410, 58–73. <https://doi.org/10.1016/j.palaeo.2014.05.031>
- Vasiliev, I., de Leeuw, A., Filipescu, S., Krijgsman, W., Kuiper, K., Stoica, M. and Briceag, A., 2010. The age of the Sarmatian-Pannonian transition in the Transylvanian Basin (Central Paratethys). *Palaeogeography, Palaeoclimatology, Palaeoecology*, 297, 54–69. <https://doi.org/10.1016/j.palaeo.2010.07.015>
- Walton, W.R. and Sloan, B.J., 1990. The genus *Ammonia* Brunnich, 1772. Its geographic distribution and morphologic variability. *Journal of Foraminiferal Research*, 20, 128–156. <https://doi.org/10.2113/gsjfr.20.2.128>
- Wegener, G., Krukenberg, V., Riedel, D., Tegetmeyer, H.E. and Boetius, A., 2015. Intercellular wiring enables electron transfer between methanotrophic archaea and bacteria. *Nature* 526, 587–590. <https://doi.org/10.1038/nature15733>
- Welter-Schultes, F., 2012. European non-marine molluscs, a guide for species identification. Planet Poster Editions, Göttingen, 674 pp.
- Wessely, G., 2006. Niederösterreich. Geologie der Österreichischen Bundesländer. Geologische Bundesanstalt Wien, 416 pp.
- Wilén, B.O. and Tiner, R.W., 1993. Wetlands of the United States. In: Whigham, D.F., Dykijová, D., Hejný, S. (Eds.): *Handbook of Vegetation Science, Wetlands of the World I: Inventory, Ecology and Management*. Kluwer Academic Publishers, Dordrecht, Bosten, London, pp. 129–194.
- Willard, D.A., Weimer, L.M. and Riegel, W.L., 2001. Pollen assemblages as paleoenvironmental proxies in the Florida Everglades. *Review of Palaeobotany and Palynology*, 113, 213–235. [https://doi.org/10.1016/S0034-6667\(00\)00042-7](https://doi.org/10.1016/S0034-6667(00)00042-7)
- Wilson, B., 1998. Superfamily Cardioidea. In: Beesley, P.L., Ross, G.J.B. and Wells, A. (eds.), *Mollusca. The Southern Synthesis: Fauna of Australia, Part A*, 5, 328–332.
- Wu, Z., Zhou, H., Peng, X., Jia, N., Wang, Y. and Yuan, L., 2009. Anaerobic oxidation of methane in coastal sediment from Guishan Island (Pearl River Estuary), South China Sea. *Journal of Earth System Science*, 117, 935–943. <https://doi.org/10.1007/s12040-008-0078-y>
- Xie, L., Wang, J.S., Wu, N.Y., Wu, D.D., Wang, Z., Zhu, X.W., Hu, J., Chen, H.R. and Lin, Q., 2013. Characteristics of authigenic pyrites in shallow core sediments in the Shenhua area of the northern South China Sea: Implications for a possible mud volcano environment. *Science China Earth Science*, 56, 1–7. <https://doi.org/10.1007/s11430-012-4511-3>
- Zelenka, J., 1990. A review of the Sarmatian Ostracoda of the Vienna Basin. In: R. Whatley and C. Maybury (eds.), *Ostracoda and Global Events*. Chapman & Hall, London, pp. 263–270.
- Zelenka, J., 1992. A review of the Pannonian Ostracoda of the Vienna Basin. *Knihovnicka Zemniho plynu a nafty*, 15, 205–213.
- Zhang, M., Konishi, H., Xu, H., Sun, X., Lu, H., Wu, D. and Wu, N., 2014. Morphology and formation mechanism of pyrite induced by the anaerobic oxidation of methane from the continental slope of the NE South China Sea. *Journal of Asian Earth Sciences*, 92, 293–301. <https://doi.org/10.1016/j.jseaes.2014.05.004>
- Zuschin, M. and Oliver, P.G., 2003. Bivalves and bivalve habitats in the northern Red Sea. *Verlag des Naturhistorischen Museums, Wien*, 304 pp., ISBN: 3902421002

Received: 08 01 2018

Accepted: 16 05 2018

Mathias HARZHAUSER^{1)*}, Oleg MANDIC¹⁾, Matthias KRANNER¹⁾, Petra LUKENEDER¹⁾, Andrea K. KERN²⁾, Martin Gross³⁾, Giorgio CARNEVALE⁴⁾ & Christine JAWECKI⁵⁾

¹⁾ Geological-Paleontological Department, Natural History Museum Vienna, Burgring 7, 1010 Vienna, Austria; mathias.harzhauser@nhm-wien.ac.at; oleg.mandic@nhm-wien.ac.at; petra.lukeneder@gmx.at;

²⁾ Department of Sedimentary and Environmental Geology, University of São Paulo, Rua do Lago 562, São Paulo 05508-080, Brazil; annkern@usp.br;

³⁾ Universalmuseum Joanneum, Department for Geology & Palaeontology, Weinzeilstraße 16, 8045 Graz, Austria; martin.gross@museum-joanneum.at;

⁴⁾ Università degli Studi di Torino, Dipartimento di Scienze della Terra, Via Valperga Caluso, 35, 10125 Torino, Italy; giorgio.carnevale@unito.it;

⁵⁾ Magistratsabteilung 29, Brückenbau und Grundbau, Wilhelminenstraße 93, 1160 Vienna, Austria; christine.jaweck@wien.gv.at;

^{*)} Corresponding author: mathias.harzhauser@nhm-wien.ac.at

ONLINE APPENDIX

Taxa (%)	Sarmatian	Sarmatian	Sarmatian	Sarmatian	Sarmatian	Sarmatian	Sarmatian	Sarmatian	Sarmatian	Sarmatian	Sarmatian	Sarmatian	Sarmatian	Sarmatian	Sarmatian	Sarmatian	Sarmatian	Sarmatian	Pannonian
	5300-59/58	5300-56/55	5300-53/52	5300-50/49	5300-47/46	5300-44/43	5300-42/41	5300-40/39	5300-38/37	5300-36/35	5300-34/33	5300-33/32	5300-32/31	7260-60/59	7260-59/58	7260-58/57	5300-30/31		
<i>Affinetrina voloshinova</i> (Bogdanowicz, 1947)	0.00	0.00	0.00	0.00	0.00	0.00	0.00	0.00	0.00	0.00	0.00	0.00	0.00	0.00	0.00	0.00	0.00	0.00	0.00
<i>Ammonia beccarii</i> (Linnaeus, 1758)	0.00	1.24	0.00	0.00	0.87	11.48	10.19	0.00	9.30	0.00	0.00	15.52	15.76	0.37	0.27	0.00	0.00	0.00	0.00
<i>Ammonia cf. tepida</i> (Cushman, 1926)	0.00	0.00	0.00	0.00	0.00	0.00	0.00	0.00	0.00	0.00	0.00	0.00	0.00	0.37	0.00	0.00	0.00	0.00	0.00
<i>Ammonia</i> sp.	0.00	0.00	0.00	0.00	0.00	0.00	0.00	0.00	0.00	0.00	0.00	0.00	0.00	0.00	0.00	0.00	0.00	0.00	0.00
<i>Anomalinoidea</i> ? sp.	0.00	0.00	0.00	0.00	0.00	0.00	0.00	0.00	0.00	0.00	0.00	0.00	0.00	0.00	0.27	1.07	0.00	0.00	0.00
<i>Articulina problema</i> Bogdanowicz, 1952	0.00	0.00	0.00	0.00	0.00	0.00	0.00	0.00	0.00	0.00	0.56	0.00	0.00	0.00	0.27	0.00	0.00	0.00	0.00
<i>Aubignyna</i> sp.	0.00	0.00	0.00	0.00	0.00	0.00	0.00	0.00	0.00	0.00	0.00	0.00	0.00	0.00	0.00	0.00	0.00	0.00	0.00
<i>Bolivina sarmatica</i> Didkowski, 1959	0.00	0.00	0.00	0.00	0.00	17.37	0.00	0.00	0.00	0.00	0.00	0.00	2.25	0.74	0.00	0.00	0.00	0.00	0.00
<i>Brizalina</i> sp.	0.00	0.00	0.00	0.00	0.00	0.00	0.00	0.00	0.00	0.00	0.00	0.00	0.00	1.84	0.00	0.00	0.00	0.00	0.00
<i>Bulimina elongata</i> d'Orbigny, 1826	0.00	0.00	0.00	0.00	0.29	1.68	0.00	0.00	1.33	0.00	0.00	0.76	0.32	2.94	0.00	0.00	0.00	0.00	0.00
<i>Bulimina</i> sp.	0.00	0.00	0.00	0.00	0.00	0.00	0.00	0.00	0.00	0.00	0.00	0.00	1.29	9.93	0.00	0.00	0.00	0.00	0.00
<i>Ceratocancris haueri</i> (d'Orbigny, 1846)	0.00	0.00	0.00	0.00	0.00	0.00	0.00	0.00	0.00	0.00	0.00	0.00	0.00	0.37	0.00	0.00	0.00	0.00	0.00
<i>Cibicoides</i> sp.	0.00	0.00	0.00	0.00	0.00	0.00	0.00	0.00	0.00	0.00	0.00	0.00	0.00	0.00	0.00	1.34	0.00	0.00	0.00
<i>Cycloforina badensis</i> (d'Orbigny, 1846)	0.00	1.24	1.51	0.87	0.00	2.24	0.00	0.00	0.00	0.00	0.00	0.00	0.00	0.37	0.00	0.27	0.00	0.00	0.00
<i>Cycloforina contorta</i> (d'Orbigny, 1846)	0.00	0.00	0.00	0.00	0.00	0.00	0.00	0.00	0.00	0.00	0.84	0.00	0.00	0.37	0.00	0.00	0.00	0.00	0.00
<i>Cycloforina fluvialia</i> (Venglini, 1958)	2.19	0.41	0.00	0.00	0.00	12.32	3.18	0.00	9.30	0.50	4.49	3.82	4.82	0.37	1.61	0.27	0.00	0.00	0.00
<i>Cycloforina haueriana</i> (d'Orbigny, 1846)	0.00	0.00	0.00	0.00	0.00	0.00	0.00	0.00	0.00	0.00	0.00	0.00	0.00	4.78	0.00	0.00	0.00	0.00	0.00
<i>Cycloforina karreriana</i> (Serova, 1955)	0.31	0.00	0.30	0.29	0.00	0.00	0.64	0.00	0.00	0.00	0.28	0.00	0.00	0.00	0.00	0.00	0.00	0.00	0.00
<i>Cycloforina</i> sp.	0.00	0.00	0.00	0.00	0.29	0.00	0.32	0.00	1.00	0.00	1.12	0.00	0.00	0.37	0.00	0.27	0.00	0.00	0.00
<i>Elphidiella artifex</i> (Serova, 1955)	0.00	0.00	0.00	0.00	0.00	0.00	0.00	0.00	0.00	0.00	0.00	0.00	0.00	0.00	0.00	1.34	0.00	0.00	0.00
<i>Elphidiella minuta</i> (Reuss, 1850)	1.88	0.00	0.00	0.29	0.00	0.28	0.00	0.00	0.00	0.00	0.00	0.00	0.00	0.00	0.00	0.00	0.00	0.00	0.00
<i>Elphidium aculeatum</i> (d'Orbigny, 1846)	1.88	1.66	0.30	0.00	0.00	0.00	0.00	0.00	0.00	0.00	0.00	0.00	0.00	0.00	0.00	19.79	0.00	0.00	0.00
<i>Elphidium cf. fichtellianum</i> (d'Orbigny, 1846)	0.00	0.00	0.00	0.00	0.00	0.00	0.00	0.00	0.00	0.00	0.00	0.00	0.00	0.00	5.36	1.07	0.00	0.00	0.00
<i>Elphidium cf. grilli</i> Papp, 1963	0.00	0.00	0.00	0.00	0.00	0.00	0.00	0.00	0.00	0.00	0.00	0.00	0.00	0.00	1.34	0.00	0.00	0.00	0.00
<i>Elphidium crispum</i> (Linnaeus, 1758)	0.00	0.00	0.00	0.00	0.00	0.00	0.00	0.00	0.00	0.00	0.00	0.00	0.00	0.00	0.27	0.00	0.00	0.00	0.00
<i>Elphidium hauerianum</i> (d'Orbigny, 1846)	60.63	3.73	1.81	9.04	4.35	0.00	0.00	13.71	25.91	2.26	10.39	0.00	2.89	0.00	0.00	7.75	18.42	0.00	0.00
<i>Elphidium josephinum</i> (d'Orbigny, 1846)	0.00	0.00	0.00	0.00	0.00	0.00	0.00	0.00	0.00	0.00	0.00	0.00	0.00	0.00	0.00	0.27	0.00	0.00	0.00
<i>Elphidium</i> sp.	0.00	0.00	0.00	0.00	0.00	0.00	0.00	1.87	0.00	0.00	0.00	0.00	0.00	0.00	0.27	9.89	0.00	0.00	0.00
<i>Fissurina</i> sp.	0.00	0.00	0.00	0.00	0.00	0.00	0.00	0.00	0.00	0.00	0.00	0.00	0.00	0.00	0.00	0.27	0.00	0.00	0.00
<i>Fursenkoina acuta</i> (d'Orbigny, 1846)	0.31	0.00	0.00	0.00	0.00	0.00	0.00	0.00	0.00	0.00	0.00	0.00	0.00	0.37	0.00	0.00	0.00	0.00	0.00
<i>Globocassidulina oblonga</i> (Reuss, 1850)	0.00	0.00	0.00	0.00	0.00	2.80	0.00	0.00	0.00	0.00	0.00	0.00	0.00	0.37	0.00	0.00	0.00	0.00	0.00
<i>Gyrogonoides</i> sp.	0.00	0.00	0.00	0.00	0.00	0.00	0.00	0.00	0.00	0.00	0.00	0.00	0.00	0.00	0.00	0.00	0.00	0.00	0.00
<i>hyalin</i> indet.	0.00	0.00	0.00	0.00	0.00	0.00	0.00	0.00	0.00	0.00	0.00	0.00	0.00	0.00	0.00	4.55	0.00	0.00	0.00
<i>Cibicoides lobatulus</i> Walker & Jacob, 1798	0.00	0.00	0.00	0.00	1.74	0.00	0.00	0.00	0.00	0.00	0.00	0.00	0.00	0.00	0.00	0.00	0.00	0.00	0.00
<i>Islandiella punctata</i> (Reuss, 1850)	0.00	0.00	0.00	0.00	0.00	0.00	0.00	0.00	0.00	0.00	0.00	0.00	0.00	0.37	0.00	0.00	0.00	0.00	0.00
<i>Melonis pompilioides</i> (Fichtel & Moll, 1798)	0.00	0.00	0.00	0.00	0.00	0.00	0.32	0.00	0.00	0.00	0.00	0.00	0.00	0.00	1.34	0.27	0.00	0.00	0.00
<i>Melonis</i> sp.	0.00	0.00	0.00	0.00	0.00	0.00	0.00	0.00	0.00	0.00	0.00	0.00	0.00	0.37	0.27	0.00	0.00	0.00	0.00
<i>Milliolidae</i> indet.	0.00	0.00	0.00	0.00	0.00	0.00	0.00	0.00	0.00	0.00	0.00	0.00	0.00	2.21	0.00	3.48	0.00	0.00	0.00
<i>Neoeponides cf. schreibersi</i> (d'Orbigny, 1846)	0.00	0.00	0.00	0.00	0.00	0.00	0.00	0.00	0.00	0.00	0.00	0.00	0.00	0.74	0.00	0.00	0.00	0.00	0.00
<i>Nonion bogdanowicz</i> Voloshinova, 1952	0.00	0.00	0.00	0.00	0.00	0.00	0.00	0.00	0.00	0.00	0.00	0.00	0.00	1.10	0.00	0.00	0.00	0.00	0.00
<i>Nonion commune</i> (d'Orbigny, 1846)	0.63	0.00	0.00	0.00	0.00	0.00	1.59	0.00	0.00	0.00	0.00	0.00	0.00	0.00	0.27	1.60	2.63	0.00	0.00
<i>Nonion</i> sp.	0.31	0.00	2.71	0.87	15.07	5.60	0.00	12.77	7.97	11.56	17.98	4.58	3.86	0.00	0.00	1.07	0.00	0.00	0.00
<i>Nonion tumidulus</i> Pishanova, 1960	0.00	0.00	0.00	0.00	0.00	0.00	0.00	0.00	0.00	0.00	0.00	0.00	0.00	1.10	0.00	0.00	0.00	0.00	0.00
<i>Oolina</i> sp.	0.00	0.00	0.00	0.00	0.00	0.00	0.00	0.00	0.00	0.00	0.00	0.00	0.00	0.37	0.00	0.00	0.00	0.00	0.00
<i>Plankton</i> indet.	0.00	0.00	0.00	0.00	0.29	0.00	0.00	0.00	1.00	0.00	0.00	0.00	0.00	0.00	0.00	0.00	0.00	0.00	0.00
<i>Parasnonion granosum</i> (d'Orbigny, 1846)	24.38	91.70	92.77	88.34	77.10	43.42	83.44	71.65	44.19	85.68	64.33	73.79	60.77	67.65	88.47	42.51	78.95	0.00	0.00
<i>Praeglobobulimina pupoides</i> (d'Orbigny, 1846)	0.00	0.00	0.00	0.00	0.00	0.00	0.00	0.00	0.00	0.00	0.00	0.00	0.00	0.37	0.00	0.00	0.00	0.00	0.00
<i>Praeglobobulimina</i> sp.	0.00	0.00	0.00	0.00	0.00	0.00	0.00	0.00	0.00	0.00	0.00	0.00	0.00	1.10	0.00	0.00	0.00	0.00	0.00
<i>Pseudotriloculina consobrina</i> (d'Orbigny, 1846)	7.50	0.00	0.60	0.00	0.00	2.52	0.32	0.00	0.00	0.00	0.00	1.53	8.04	0.00	0.00	0.27	0.00	0.00	0.00
<i>Rosalina</i> sp.	0.00	0.00	0.00	0.00	0.00	0.00	0.00	0.00	0.00	0.00	0.00	0.00	0.00	0.00	0.00	0.27	0.00	0.00	0.00
<i>Sigmoilopsis</i> sp.	0.00	0.00	0.00	0.00	0.00	0.00	0.00	0.00	0.00	0.00	0.00	0.00	0.00	0.37	0.00	0.00	0.00	0.00	0.00
<i>Spirolina austriaca</i> d'Orbigny, 1846	0.00	0.00	0.00	0.29	0.00	0.00	0.00	0.00	0.00	0.00	0.00	0.00	0.00	0.37	0.00	0.00	0.00	0.00	0.00
<i>Stilostomella</i> sp.	0.00	0.00	0.00	0.00	0.00	0.00	0.00	0.00	0.00	0.00	0.00	0.00	0.00	0.00	0.00	0.27	0.00	0.00	0.00
<i>Triloculina</i> sp.	0.00	0.00	0.00	0.00	0.28	0.00	0.00	0.00	0.00	0.00	0.00	0.00	0.00	0.37	0.00	0.27	0.00	0.00	0.00
<i>Valvulineria</i> sp.	0.00	0.00	0.00	0.00	0.00	0.00	0.00	0.00	0.00	0.00	0.00	0.00	0.00	0.00	0.00	0.00	0.00	0.00	0.00
<i>Varidentella</i> sp.	0.00	0.00	0.00	0.00	0.00	0.00	0.00	0.00	0.00	0.00	0.00	0.00	0.00	0.00	0.00	1.87	0.00	0.00	0.00

Appendix 1: Quantitative data of the foraminiferal assemblages (percentage per sample) from RKB 5300 and RKB 7260.

	Taxa	Sarmatian 5260-60/59	Sarmatian 5260-59/58	Sarmatian 5260-58/57	Sarmatian 5300-57/56	Sarmatian 5300-56/55	Sarmatian 5300-55/54	Sarmatian 5300-54/53	Sarmatian 5300-53/52	Sarmatian 5300-52/51	Sarmatian 5300-51/50
Bivalvia	<i>Musculus sarmaticus</i> (Gutavev, 1916)	0	0	0	0	0	0	0	1	1	1
Bivalvia	<i>Mytilopsis martonfiji</i> (Lorenthey, 1893)	0	0	0	0	0	0	0	0	0	0
Bivalvia	<i>Mytilopsis moesia</i> (Jekelius, 1944)	0	0	0	0	0	0	0	0	0	0
Bivalvia	<i>Obsoletiforma vindobonense</i> (Laskarew, 1903)	1	1	1	1	0	0	1	0	0	0
Bivalvia	<i>Inaequicostata politioanei</i> (Jekelius, 1944)	1	1	1	1	0	0	1	1	1	1
Bivalvia	<i>Chartocardium carasi</i> (Jekelius, 1944)	0	0	0	0	0	0	0	0	0	0
Bivalvia	<i>Lymnocardium timisense</i> Jekelius, 1944	0	0	0	0	0	0	0	0	0	0
Bivalvia	<i>Lymnocardium pseudoboletum</i> (Fuchs, 1873)	0	0	0	0	0	0	0	0	0	0
Bivalvia	<i>Monodacna cf. viennensis</i> (Papp, 1953)	0	0	0	0	0	0	0	0	0	0
Bivalvia	<i>Erville dissita</i> (Eichwald, 1830)	0	0	0	0	0	0	0	0	0	0
Bivalvia	<i>Polittapes tricuspid</i> (Eichwald, 1829)	1	1	1	1	0	0	0	0	0	0
Bivalvia	<i>Sarmatimactra eichwaldi</i> (Laskarew, 1914)	0	0	0	0	0	0	0	0	0	0
Gastropoda	<i>Theodoxus</i> sp.	0	0	0	0	0	0	0	0	0	0
Gastropoda	<i>Gibbula</i> sp.	0	0	0	0	0	0	0	0	0	0
Gastropoda	<i>Gibbula picta</i> (Eichwald, 1830)	0	0	0	0	0	0	0	0	0	0
Gastropoda	<i>Gibbula poppelacki</i> (Hörnes, 1856)	0	0	0	0	0	0	0	0	0	0
Gastropoda	<i>Granulolabium bianctum</i> (Brocchi, 1814)	0	0	0	0	0	0	0	0	0	0
Gastropoda	<i>Cerithium rubiginosum</i> Eichwald, 1830	0	0	0	0	0	0	0	0	0	0
Gastropoda	<i>Socenia soceni</i> Jekelius, 1944	0	0	0	0	0	0	0	0	0	0
Gastropoda	<i>Pseudamnicola?</i> sp.	0	0	0	0	0	0	0	0	0	0
Gastropoda	"Hydrobia" sp. 1	0	0	0	0	0	0	0	0	0	0
Gastropoda	"Hydrobia" sp. 2	1	0	0	0	0	0	0	0	0	0
Gastropoda	<i>Goniocylus haidingeri</i> (Stoliczka, 1862)	0	0	0	0	0	0	0	0	0	0
Gastropoda	<i>Melanopsis pseudonarzalina</i> Papp, 1953	0	0	0	0	0	0	0	0	0	0
Gastropoda	<i>Melanopsis</i> sp.	0	0	0	0	0	0	0	0	0	0
Gastropoda	<i>Melanopsis impressa</i> Krauss, 1852	0	0	0	0	0	0	0	0	0	0
Gastropoda	<i>Dorsanum duplicatum</i> (Sowerby, 1829)	0	0	0	0	0	0	0	0	0	0
Gastropoda	<i>Akburunella cf. triformis</i> (Kolesnikov, 1932)	0	0	0	0	0	0	0	0	0	0
Gastropoda	<i>Mitrella</i> sp.	0	0	0	0	0	0	0	0	0	0
Gastropoda	<i>Retusa</i> sp.	0	0	0	0	0	0	0	0	0	0
Gastropoda	<i>Acteocina lajanikaireana</i> (Basterot, 1825)	0	0	0	0	0	0	0	0	0	0
Gastropoda	"Valvata" soceni wiesenensis Papp, 1954	0	0	0	0	0	0	0	0	0	0
Gastropoda	<i>Valvata simplex</i> Fuchs, 1870	0	0	0	0	0	0	0	0	0	0
Polychaeta	<i>Spirorbis bilineatus</i> Schmidt, 1951	0	0	0	0	0	0	0	0	0	0
Osteichthyes	<i>Hesperichthys reductus</i> Schwarzhans et al., 2017	0	0	0	0	0	0	0	0	0	0
Osteichthyes	<i>Paratrissopterus caspius</i> (Bogatshov 1929)	0	0	0	0	0	0	0	0	0	0
Osteichthyes	Teleost indet. (teeth)	0	0	0	0	0	0	0	0	0	0

Appendix 2: Presence/absence data on macrofossils from RKB 5300, RKB 5260 and RKB 7260.

The Sarmatian/Pannonian boundary at the western margin of the Vienna Basin (City of Vienna, Austria)

		Sarmatian	Sarmatian	Sarmatian	Pannonian	Pannonian	Pannonian	Pannonian
Taxa		5300-38/37	5300-36/35	5300-34/33	5300-29/28	7260-54/53	7260-51/50	7260-41/40
Cupressaceae	Taxioideae	11.60	16.30	13.89	1.88	4.78	4.15	1.04
Pinaceae	<i>Abies</i>	4.56	8.70	11.11	5.52	5.26	5.95	7.77
Pinaceae	<i>Cathaya</i>	10.46	8.70	2.78	23.34	20.10	7.18	13.82
Pinaceae	<i>Picea</i>	3.42	2.17	2.78	3.76	5.50	3.48	5.70
Pinaceae	<i>Sciadopitys</i>	0.00	0.00	0.00	0.25	0.36	0.00	0.00
Pinaceae	<i>Tsuga</i>	3.42	17.39	11.11	10.66	9.09	6.62	9.67
Pinaceae	gen_indet	6.08	3.26	0.00	31.49	16.63	45.12	53.37
Altingiaceae	<i>Liquidambar</i>	2.09	0.00	0.00	0.50	0.48	0.56	0.00
Amaranthaceae	Chenopodioideae	0.19	0.00	0.00	0.00	0.24	0.00	0.00
Anacardiaceae	<i>Rhus</i>	0.57	0.00	0.00	0.00	0.00	0.00	0.00
Araliaceae	gen_indet	0.38	0.00	0.00	0.00	0.12	0.11	0.00
Arecaceae	gen_indet	1.14	0.00	0.00	0.25	0.24	0.34	0.00
Betulaceae	<i>Alnus</i>	0.76	0.00	0.00	0.13	0.00	0.00	0.00
Betulaceae	<i>Betula</i>	0.57	0.00	0.00	0.13	0.24	0.00	0.00
Betulaceae	<i>Carpinus</i>	1.71	0.00	0.00	0.25	0.36	0.79	0.17
Betulaceae	<i>Corylus</i>	0.38	0.00	0.00	0.00	0.00	0.00	0.00
Cannabaceae	<i>Celtis</i>	0.38	0.00	2.78	0.00	0.24	0.11	0.00
Cornaceae	<i>Nyssa</i>	0.00	0.00	2.78	0.13	0.00	0.22	0.35
Cyperaceae	gen_indet	0.00	0.00	0.00	0.00	0.24	0.00	0.00
Elaeagnaceae	<i>Elaeagnus</i>	0.00	0.00	0.00	0.13	0.00	0.00	0.00
Ephedraceae	<i>Ephedra</i>	0.19	0.00	0.00	0.00	0.00	0.00	0.00
Ericaceae	gen_indet	0.38	3.26	0.00	0.00	0.12	0.00	0.00
Fagaceae	<i>Fagus</i>	6.46	2.17	0.00	3.26	6.34	4.83	2.59
Fagaceae	<i>Quercus</i>	10.08	4.35	11.11	1.88	2.99	3.59	1.55
Hamameliaceae	gen_indet	0.76	0.00	0.00	0.00	0.48	0.79	0.00
Juglandaceae	<i>Carya</i>	3.99	8.70	8.33	4.64	7.42	6.17	1.21
Juglandaceae	<i>Engelhardia</i>	2.47	1.09	0.00	0.13	0.36	0.90	0.17
Juglandaceae	<i>Juglans</i>	1.33	0.00	0.00	1.25	2.15	1.01	0.00
Juglandaceae	<i>Platycarya</i>	0.19	0.00	2.78	0.00	0.00	0.11	0.00
Juglandaceae	<i>Pterocarya</i>	0.57	0.00	0.00	0.38	0.48	0.34	0.00
Juglandaceae	gen_indet	0.00	0.00	0.00	0.00	0.48	0.00	0.00
Malvaceae	<i>Reevesia</i>	0.00	0.00	0.00	0.00	0.12	0.00	0.00
Malvaceae	<i>Tilia</i>	0.38	1.09	0.00	1.51	1.79	0.79	0.00
Myrtaceae	gen_indet	0.76	0.00	0.00	0.00	0.00	0.00	0.00
Oleaceae	<i>Olea</i>	0.19	0.00	0.00	0.00	0.00	0.00	0.00
Oleaceae	gen_indet	0.19	0.00	0.00	0.00	0.24	0.00	0.00
Poaceae	gen_indet	11.03	11.96	30.56	6.02	6.22	2.69	2.25
Rhamnaceae	gen_indet	0.00	0.00	0.00	0.00	0.24	0.00	0.00
Rosaceae	gen_indet	0.38	0.00	0.00	0.13	0.36	0.22	0.00
Rutaceae	<i>Zanthoxylum</i>	0.00	0.00	0.00	0.00	0.24	0.00	0.00
Salicaceae	<i>Salix</i>	0.19	0.00	0.00	0.00	0.00	0.00	0.00
Sapotaceae	gen_indet	0.76	0.00	0.00	0.00	0.00	0.00	0.00
Symplpceae	<i>Symplocos</i>	0.00	0.00	0.00	0.00	0.24	0.00	0.00
Thyphaceae	<i>Sparganium</i>	0.00	0.00	0.00	0.63	0.00	0.00	0.00
Ulmaceae	<i>Ulmus</i>	8.17	6.52	0.00	1.51	2.99	2.69	0.17
Ulmaceae	<i>Zelkova</i>	0.76	1.09	0.00	0.25	0.24	0.34	0.00
Ulmaceae	gen_indet	0.57	0.00	0.00	0.00	0.72	0.11	0.00
Vitaceae	<i>Parthenocissus</i>	0.57	0.00	0.00	0.00	1.20	0.34	0.00
Vitaceae	gen_indet	0.57	3.26	0.00	0.00	0.60	0.45	0.17
morpho-taxon	<i>Fupingopollenites wackersdorfensis</i>	1.33	0.00	0.00	0.00	0.12	0.00	0.00
Pinaceae	<i>Pinus</i>	57.55	84.97	87.92	63.31	61.97	35.95	38.01
Pinaceae	gen_indet	2.58	0.49	0.00	11.56	6.32	28.90	33.08
Pinaceae_all	<i>Pinaceae_all</i>	69.41	93.46	92.95	90.84	83.62	79.73	94.00
pollen		80.72	88.70	90.30	92.54	93.89	93.89	96.87
spores		2.41	0.14	0.00	1.11	0.85	0.85	0.35
fungi		1.43	0.00	0.00	1.15	1.84	1.84	1.04
dinoflagellates		15.44	11.16	9.70	5.20	3.42	3.42	1.74

Appendix 3: Percentages calculated for pollen and spore assemblages (excluding *Pinus*) of the cores RKB 5300 and RKB 7260. *Pinus* percentages are based on the total counts. Dinoflagellate and fungi abundance per sample are given in the lower part of the table.

Taxa	Pannonian																Sarmatian																stratigraphic range	ecology
	726023/22	726025/24	726030/29	726038/37	726048/47	726050/49	726054/53	726058/57	726060/59	530021/20	530023/22	530025/24	530028/27	530029/28	530030/29	530031/30	530036/35	530038/37	530040/39	530042/41	530047/46	530050/49	530053/52	530056/55	530059/58									
<i>Amniccythere cf. monotuberculata</i> (Sokač, 1972)	21	0	0	0	0	0	0	0	0	0	0	0	2	1	3	0	0	0	0	0	0	0	0	0	0	7A-D [1]	see <i>A. tenuis</i>							
<i>Amniccythere cf. polymorpha</i> (Olteanu, 1989)	0	0	0	0	0	0	0	0	0	0	0	0	0	0	10	0	0	0	0	0	0	0	0	0	0	7E to Dacian [2, 3]	see <i>A. tenuis</i>							
<i>Amniccythere tenuis</i> (Reuss, 1850)	0	0	0	0	0	0	0	0	0	0	0	0	21	0	0	3	0	0	1	0	4	3	7	2	0	Sar. to A-E [4, 5, 6, 7]	litt.-sublitt., mesoh.-freshw. [3, 7]							
<i>Amplocypris sincera</i> Zalaiány, 1944	25	3	0	0	3	1	0	0	0	4	5	5	2	0	2	0	0	0	0	0	0	0	0	0	0	A-D, esp. B-C [8, 1]	litt., mesoh. [11]							
<i>Aurila notata</i> (Reuss, 1850)	0	0	0	0	0	0	0	34	1	0	0	0	0	0	0	1	1	0	0	0	0	0	1	0	0	U.Sar. [4, 5, 6]	litt.-m.sublitt., mesoh.-hyperh., euryh. [4, 10]							
<i>Callistocythere egregia</i> (Méhes, 1908)	0	0	0	0	0	2	0	0	0	0	0	0	0	0	0	0	0	0	1	0	0	2	0	0	0	Sar. to B-C [4, 6, 8]	litt.-m.sublitt., marine-mesoh. [10]							
<i>Candana</i> sp.	7	4	0	0	0	0	0	0	0	0	2	0	50	0	1	0	0	0	0	0	0	0	0	0	0	litt.-sublitt., freshw.-mesoh. [12]								
<i>Cnestocythere</i> sp.	0	0	0	0	0	0	0	0	0	0	0	0	0	0	0	0	0	0	0	0	0	0	0	0	3	to U.Sar. [4, 6]	litt.-sublitt., marine-7polyh. [10]							
<i>Cyamocytheridea leptostigma</i> (Reuss, 1850)	0	0	0	0	0	0	0	0	0	0	0	0	0	0	0	0	0	0	15	0	0	0	0	1	3	Bad. to Sar., esp. U.Sar. [4, 5, 6]	litt.-m.sublitt., marine-polyh. [12, 13]							
<i>Cypria reniformis</i> (Héjjas, 1892)	16	0	0	0	0	0	0	0	0	0	0	0	0	0	0	0	0	0	0	0	0	0	0	0	0	A-E [8]	litt., freshw.-mesoh., phytal [12]							
<i>Cyprideis tuberculata</i> (Méhes, 1908)	9	7	20	0	0	4	1	0	0	0	0	0	1	0	0	0	0	0	0	0	0	0	0	0	0	A-C, esp. B [1, 8, 9]	litt., freshw.-hyperh., euryh. [3, 11]							
<i>Hemicyprideis dacica</i> (Héjjas, 1894)	0	0	0	0	0	0	0	0	0	0	0	0	0	0	0	0	0	0	0	0	0	0	0	0	1	to U.Sar. [5, 6]	see <i>C. tuberculata</i> [14]							
<i>Hemicytheria hungarica</i> (Méhes, 1908)	17	6	0	0	0	8	13	0	0	0	0	16	0	3	5	0	0	0	0	0	0	0	0	0	0	U.Sar. to A-B, esp. B [1, 5, 8]	see <i>H. amphalodes</i>							
<i>Hemicytheria amphalodes</i> (Reuss, 1850)	15	3	0	0	0	8	2	0	0	0	0	12	0	0	4	0	0	0	1	0	0	0	0	0	0	U.Bad. to A-B, esp. U.Sar. [4, 5, 10]	litt.-m.sublitt., oligoh.-polyh. [10]							
<i>Herpetocyrella auriculata</i> (Reuss, 1850)	0	0	2	3	0	0	2	0	0	0	0	0	0	0	2	0	0	0	0	0	0	0	0	0	0	A-C (E), esp. B [1, 5, 8]	litt., mesoh.-freshw. [3, 11]							
<i>Laxoconcha cf. irregularis</i> (Olteanu, 1986)	7	0	0	0	1	0	0	0	0	0	0	8	0	0	1	0	0	0	0	0	0	0	0	0	0	7C-D [2]	see <i>L. kochi</i>							
<i>Laxoconcha kochi</i> (Méhes, 1908)	1	0	0	0	0	0	0	0	0	0	0	0	0	0	0	0	0	0	0	0	0	0	0	0	0	U.Bad. to A-C [4, 6, 10]	litt.-m.sublitt., mesoh.-marine [10]							
<i>Laxoconcha mülleri</i> (Méhes, 1908)	0	0	0	0	0	0	0	0	0	0	0	10	0	0	0	0	0	0	0	0	0	0	0	0	0	A-E [8]	see <i>L. kochi</i>							
<i>Laxoconcha</i> sp.	17	0	0	0	0	0	0	0	0	0	0	0	0	0	0	0	0	0	0	0	0	0	0	0	0	to U.Sar. [5, 6]	see <i>L. kochi</i>							
<i>Laxocorniculina hadonica</i> (Pokorný, 1952)	0	0	0	0	0	0	0	0	0	0	0	8	0	12	0	0	0	0	0	0	0	0	0	0	0	A-E [1, 8]	see <i>L. kochi</i>							
<i>Xestoleberis cf. fuscata</i> Schneider, 1953	0	0	0	0	0	0	0	0	4	0	0	0	0	0	0	0	0	0	2	1	0	1	0	0	0	Bad. to Sar. [6]	litt.-m.sublitt., marine-mesoh., phytal [10]							
number of valves	135	23	22	3	4	23	18	34	5	4	5	7	80	51	32	14	1	1	2	18	5	5	9	3	18									
number of species	10	5	2	1	2	5	4	1	2	1	1	2	9	2	6	5	1	1	2	3	2	2	3	2	4									

Appendix 4: Occurrences and stratigraphic range of ostracods in RKB 5300 and RKB 7260. Bad. = Badenian, Sar. = Sarmatian, U. = upper; esp. = especially; upper case letters = zones of Papp (1951); lit. = littoral, sublitt. = sublittoral zone, m.sublitt. = medium-deep sublittoral zone; freshw. = freshwater, oligoh. = oligohaline, mesoh. = mesohaline, polyh. = polyhaline, hyperh. = hyperhaline, euryh. = euryhaline; square brackets = references: 1: Krstić, 1985, 2: Olteanu, 1989, 3: Cziczter et al., 2009, 4: Cernajsek, 1974, 5: Jiříček, 1974, 6: Tóth, 2008, 7: Namiotko et al., 2012, 8: Jiříček, 1985, 9: Kollmann, 1960, 10: Gross, 2006, 11: Gross, 2004, 12: Morkhoven, 1963, 13: Pirkenseer and Berger, 2011, 14: Malz, 1971.

Malz, H., 1971. A paleoecological review of the Chattian/Aquitainian boundary in the Mainz Basin by means of ostracoda. In: H.J. Oertli (ed.): *Paléocéologie des Ostracodes*. Bulletin du Centre de Recherches, Supplement 5. Pau-Société Nationale des Petroles d'Aquitaine, Pau, pp. 515–522.

Morkhoven van, F.P.C.M., 1963. Post-Palaeozoic Ostracoda, their Morphology, Taxonomy, and Economic use. Volume 2, Generic descriptions. Elsevier, Amsterdam/London/New York, 478 pp. <https://doi.org/10.1086/404561>

Namiotko, T., Danielopol, D.L., Belmecheri, S., Gross, M. and Grafenstein von, U., 2012. On the Leptocytheridae Ostracods of the long-lived Lake Ohrid: a reappraisal of their taxonomic assignment and biogeographic origin. *International Review of Hydrobiology*, 97/4, 356–374. <https://doi.org/10.1002/iroh.201211496>

Pirkenseer, C. and Berger, J.P., 2011. Paleogene Ostracoda from the southern Upper Rhine Graben: Taxonomy, palaeoecology and palaeobiogeography. *Palaeontographica*, A, 295, 1–152. <https://doi.org/10.1127/pala/295/2011/1>

ZOBODAT - www.zobodat.at

Zoologisch-Botanische Datenbank/Zoological-Botanical Database

Digitale Literatur/Digital Literature

Zeitschrift/Journal: [Austrian Journal of Earth Sciences](#)

Jahr/Year: 2018

Band/Volume: [111](#)

Autor(en)/Author(s): Harzhauser Mathias, Mandic Oleg, Kranner Matthias, Lukeneder Petra, Kern Andrea, Groß [Gross] Martin

Artikel/Article: [The Sarmatian/Pannonian boundary at the western margin of the Vienna Basin \(City of Vienna, Austria\) 26-47](#)