

Mitt. Österr. Geol. Ges.	ISSN 0251-7493	94 (2001)	79-98	Wien, August 2003
--------------------------	----------------	-----------	-------	-------------------

### Keywords

*Western Carpathians  
Mesozoic  
paleotectonic evolution  
rifting  
break-up*

# Dynamics of Mesozoic pre-orogenic rifting in the Western Carpathians

DUŠAN PLAŠIENKA<sup>1</sup>

7 Figures

## Content

Abstract .....	79
1. Introduction .....	80
2. Outline of the structure and Mesozoic evolution of the Western Carpathians .....	80
3. Subsidence history .....	84
3.1 Methodical approach .....	84
3.2 Units derived from the proximity of the Meliata Ocean .....	85
3.3 Slovakocarpathan units .....	87
3.4 Penninic units .....	88
4. Timing of the principal Mesozoic rifting events .....	88
4.1 Permian – Triassic events .....	88
4.2 Jurassic events .....	89
4.3 Cretaceous events .....	89
5. Discussion .....	91
5.1 Kinematics of pre-orogenic rifting in the Western Carpathians .....	91
5.2 Correlation with the Alps .....	91
5.3 Geodynamic background of rifting .....	92
6. Conclusion .....	93
7. Acknowledgements .....	94
References .....	94

## Abstract

The West Carpathian Mesozoic sedimentary successions provide evidence about important pre-orogenic rifting events that generated subsiding basinal domains separated by submarine and/or subaerial highs. Since the geometry of rift-related fault structures can seldom be studied directly, the rifting process is reconstructed by interpretation of relative bathymetry/subsidence curves of individual sedimentary successions. Five rifting phases, which represent climaxes of a long-termed extensional tectonic regime, can be distinguished: (1) the latest Permian – Early Triassic phase which was completed by the Anisian break-up of the Meliata Ocean; (2) the Early Liassic phase which was characterized by overall lithospheric stretching and wide rifting; (3) the restricted Late Liassic phase which manifested itself by extensional block tilting; (4) the Middle Jurassic asymmetric rifting which was terminated by the break-up of the South Penninic-Vahic ocean in the late Bajocian – early Bathonian and (5) the Early Cretaceous asymmetric rifting that led to the break-up of the North Penninic-Magura Ocean. The passive, asymmetric rifting mode is inferred in this study from distinctly different subsidence and/or uplift patterns of opposite margins of extended basinal domains. Further it is assumed that solely asymmetric rifting resulted in the break-up of the European continental lithosphere to generate the Penninic oceanic domains. Since rifting in the foreland of the lower plate occurred contemporaneously with advancement and shortening of the compressional orogenic wedge prograding from the hinterland Meliata suture, a common geodynamic scenario for simultaneous foreland extension and hinterland compression during one orogenic cycle is proposed in this study.

## Address of the author

<sup>1</sup> Dušan PLAŠIENKA, Geological Institute, Slovak Academy of Sciences, Dúbravská 9, P.O. Box 106, SK-840 05 Bratislava 45, Slovakia,  
E-Mail: [Dusan.Plasienka@savba.sk](mailto:Dusan.Plasienka@savba.sk)

## 1. Introduction

It is generally assumed that Mesozoic units assembled in the Western Carpathians were derived from various neighbouring sections of the Mesozoic Tethyan shelves (e. g. MICHALÍK and KOVÁČ, 1982; RAKÚS et al., 1990; HAAS et al. 1995). Units presently located in the Central Western Carpathians between the Pieniny Klippen Belt and the Meliata suture represent parts of the northern, passive European margin of the Meliata Ocean in the Triassic. During the Jurassic, this so called Slovakocarpethian (eastern prolongation of the Austroalpine) area was separated from the North European Platform by the Ligurian-Piemont-Vahic branch of Tethys (South Penninic Ocean), hence becoming an autonomous continental domain between two oceanic realms. The subsequent Late Jurassic to Early Cretaceous closure of the Meliata Ocean amalgamated the Slovakocarpethian realm with continental fragments derived from the north-eastern Adriatic margin (Transdanubian Range, or Pelso mega-unit). In addition, during the Early Cretaceous, the Oravic ribbon continent was detached from the European shelf by opening of the North Penninic-Magura oceanic branch. Subsequently, the Penninic oceanic domains were gradually diminished and closed during the Late Cretaceous and Early Tertiary.

This Mesozoic geodynamic scenario is recorded in numerous, often continuous, sedimentary successions in the Western Carpathians. The investigation of this preserved evidence of rifting and eventual oceanic break-up events that preceded the Late Cretaceous contraction and nappe stacking is the main goal of this paper. In general, two independent, large-scale rifting events can be reconstructed from the sedimentary record of the Western Carpathians. The first event involves the Late Permian – Early Mesozoic extension of the young post-Variscan continental lithosphere along the southern active European margin. This event took place within the reach of back-arc extensional processes generated by the northward subducting Paleotethys (STAMPFLI, 1996). It was associated with widespread magmatism and high-temperature/low-pressure metamorphism (e. g. BONIN, 1990; VON RAUMER and NEUBAUER, 1993; RING and RICHTER, 1994). This indicates that stretching affected a thermally weakened lithosphere. Although numerous Permian rift arms were aborted, those located in the proximity of the active margin developed then into the Meliata Ocean which opened during the Anisian (KOZUR, 1991).

The second rifting event occurred within the consolidated epi-Variscan lithosphere and led to the break-up of the Triassic carbonate platform. This event took place in the Jurassic and ultimately led to the opening of the Alpine Tethys basins as rift arms propagated from the Central Atlantic Ocean to the East (DEWEY et al., 1973; FRISCH, 1979; STAMPFLI, 1994). The oblique drift of Africa and Adria relative to Europe during the Jurassic requires rifting to be oblique as well and therefore the Penninic oceanic basins were probably formed as transtensional pull-apart basins which later widened due to oceanic spreading (KELTS, 1981; WEISSERT and BERNOULLI, 1985; LEMOINE and TRÜMPY, 1986; LEMOINE et al., 1986, 1987). The reconstructed paleogeographic configuration of continental and oceanic domains in the western Tethyan – Atlantic realms requires the connection between the oceanic branches of the Atlantic Alpine Tethys and the north-east Tethys-Vardar Ocean through a transform corri-

dor in the Eastern Alpine-Carpathian area (DEBELMAS and SÂNDULESCU, 1987; TRÜMPY, 1988). However, this model is hampered by the absence of Jurassic ophiolites in those Western Carpathian zones, which are laterally linked with the Alpine oceanic domains. This fact can be explained by the fundamentally different Tertiary evolution of the Alps in comparison with the Western Carpathians. Continental collision, crustal thickening and exhumation of deeply buried Penninic complexes occurred in the Alps, while the Western Carpathians were governed by subduction and back-arc lithospheric stretching, hence keeping the Penninic ophiolite-bearing complexes mostly hidden. Nevertheless, there is some reflection seismic evidence for the existence of the South Penninic oceanic suture in the deep structure of the Western Carpathians (TOMEK, 1993). Other evidence comes from secondary occurrences of pebbles of ophiolite material (e. g. MIŠÍK and MARŠCHALKO, 1988) and heavy mineral spectra (WINKLER and ŚLĄCZKA, 1994) from Cretaceous flysch complexes. However, since it was also suggested that most of this ophiolite material may well have been derived from the Meliatic suture (PLAŠIENKA, 1995a), these secondary ophiolite occurrences do not provide unambiguous evidence about the paleogeographic positions of oceanic zones in this area.

Another problem of the reconstruction of Mesozoic rifting processes in the Western Carpathians is the deficiency of high mountains and good outcrops, in which the geometry and kinematics of extensional faults can be studied. In addition, many of original rift-related normal faults were reactivated as thrust faults during the Eo-Alpine evolution thus making the reconstruction of extensional structures difficult. In spite of these difficulties, it was possible to present fairly well constrained models of the geometry and kinematics of extensional structures from the Tatric area (PLAŠIENKA et al. (1991), DUMONT et al. (1996), PLAŠIENKA (2003)) and the Czorsztyn Ridge (AUBRECHT and TÚNYI, 2001). Nevertheless, the reconstruction of the Mesozoic oceanic domains in the Western Carpathians presented in this paper is still mainly based on circumstantial reasoning and indirect criteria from the sedimentary rock record similar to previous studies by MICHALÍK and KOVÁČ (1982), BIRKENMAJER (1986), PLAŠIENKA (1995b) and WIECZOREK (2000). Therefore relying on the rich sedimentary record, this present paper aims at the discrimination and paleotectonic interpretation of the principal Early Alpine pre-orogenic rifting events.

## 2. Outline of the structure and Mesozoic evolution of the Western Carpathians

The Western Carpathians are bordered by the Tertiary foredeep against the North European Platform and by the subsurface Mid-Hungarian lineament against the South Pannonian Tisia terrane. The lateral boundaries to the Eastern Alps are conventionally placed between the Malé Karpaty and Leitha Mts. and the Uh river valley forms the boundary to the Eastern Carpathians. Within this frame, the Western Carpathians are generally divided into the Internal, Central and External Western Carpathians (IWC, CWC and EWC, respectively – PLAŠIENKA, 1999). The units of the IWC (Pelso terrane – see e. g. KOVÁCS et al., 2000) occur in pre-Tertiary horsts in the Neogene Pannonian Basin in northern

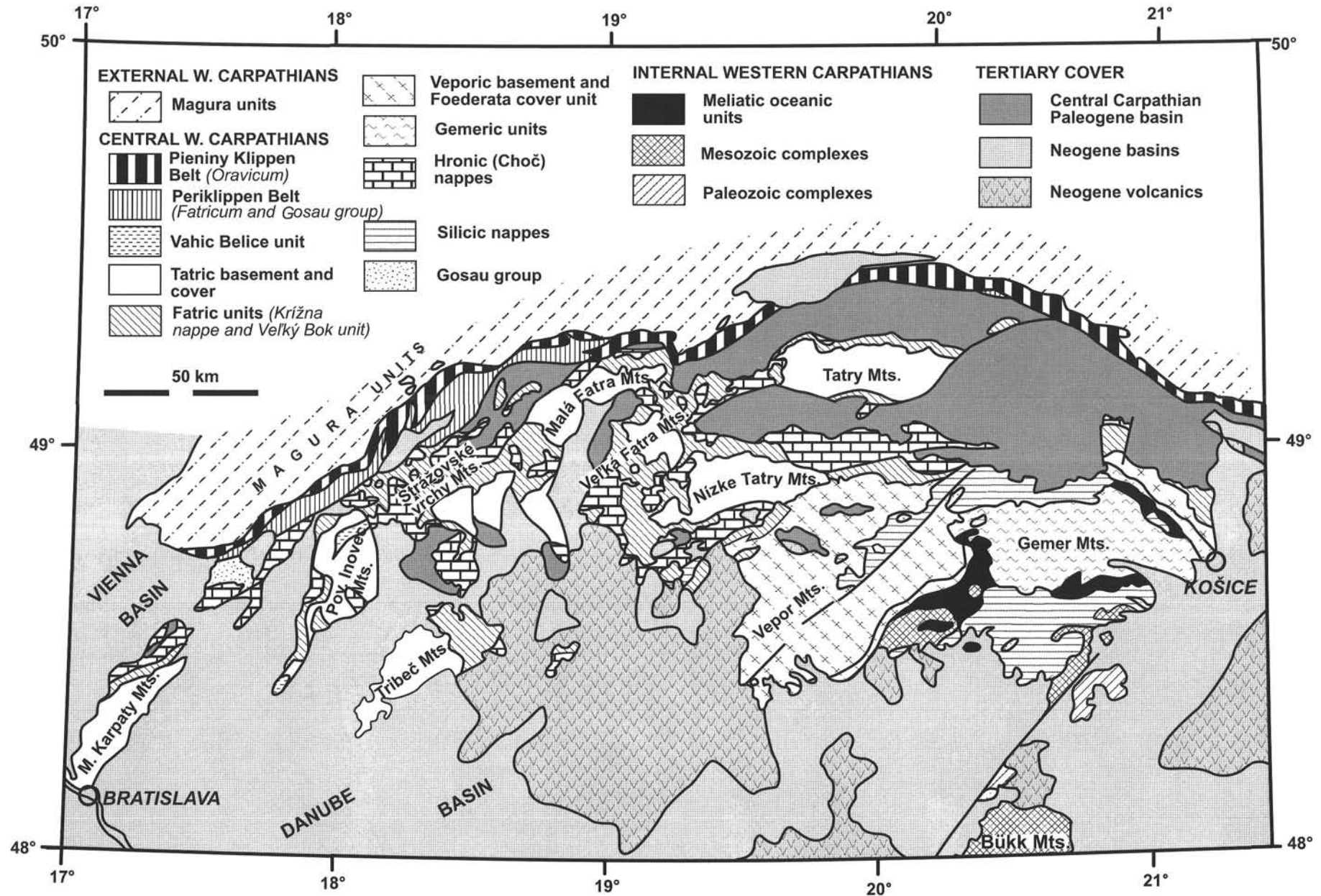


Fig. 1  
Simplified geological map of the Central and Internal Western Carpathians. All boundaries of pre-Tertiary units are tectonic by origin.

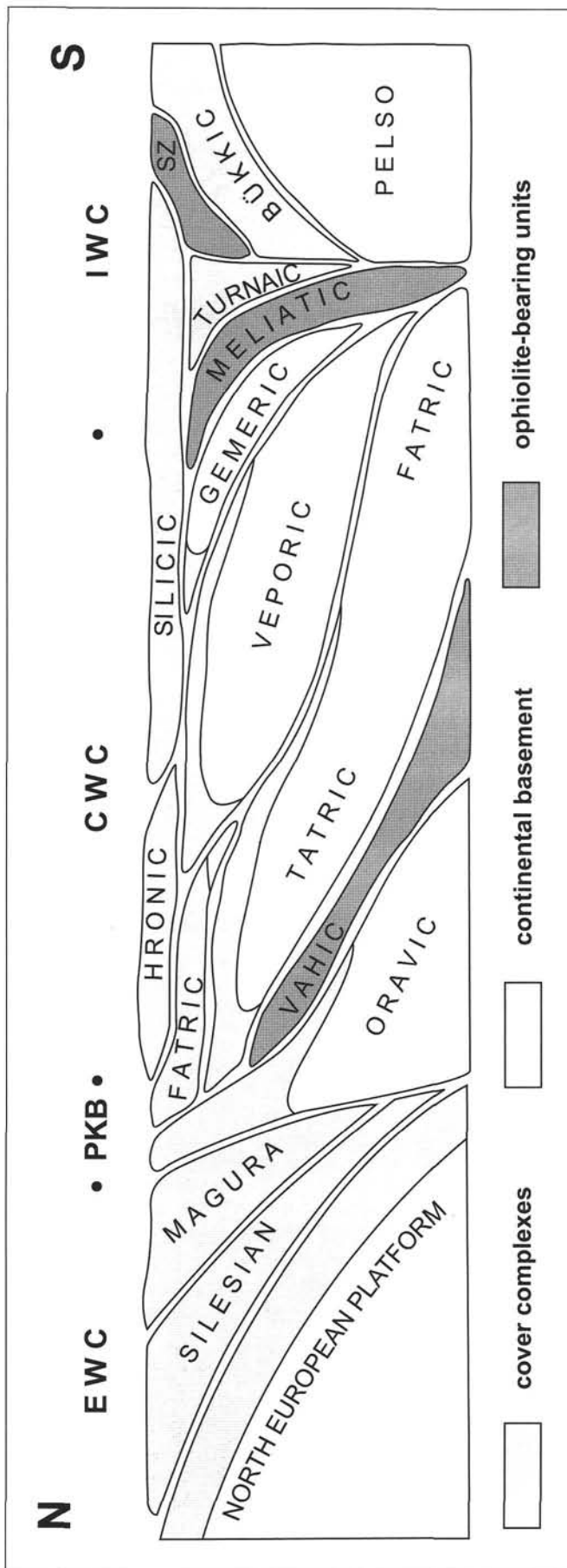


Fig. 2

Schematic cross-section of the Western Carpathians showing relationships of their principal tectonic units. EWC – External Western Carpathians, PKB – Pieniny Klippen Belt, CWC – Central Western Carpathians, IWC – Internal Western Carpathians, SZ – Szarvaskő Unit. Not to scale. Note that the Hronic and Silicic superunits are out-of-sequence cover nappe systems that do not respect the polarity of the basement units.

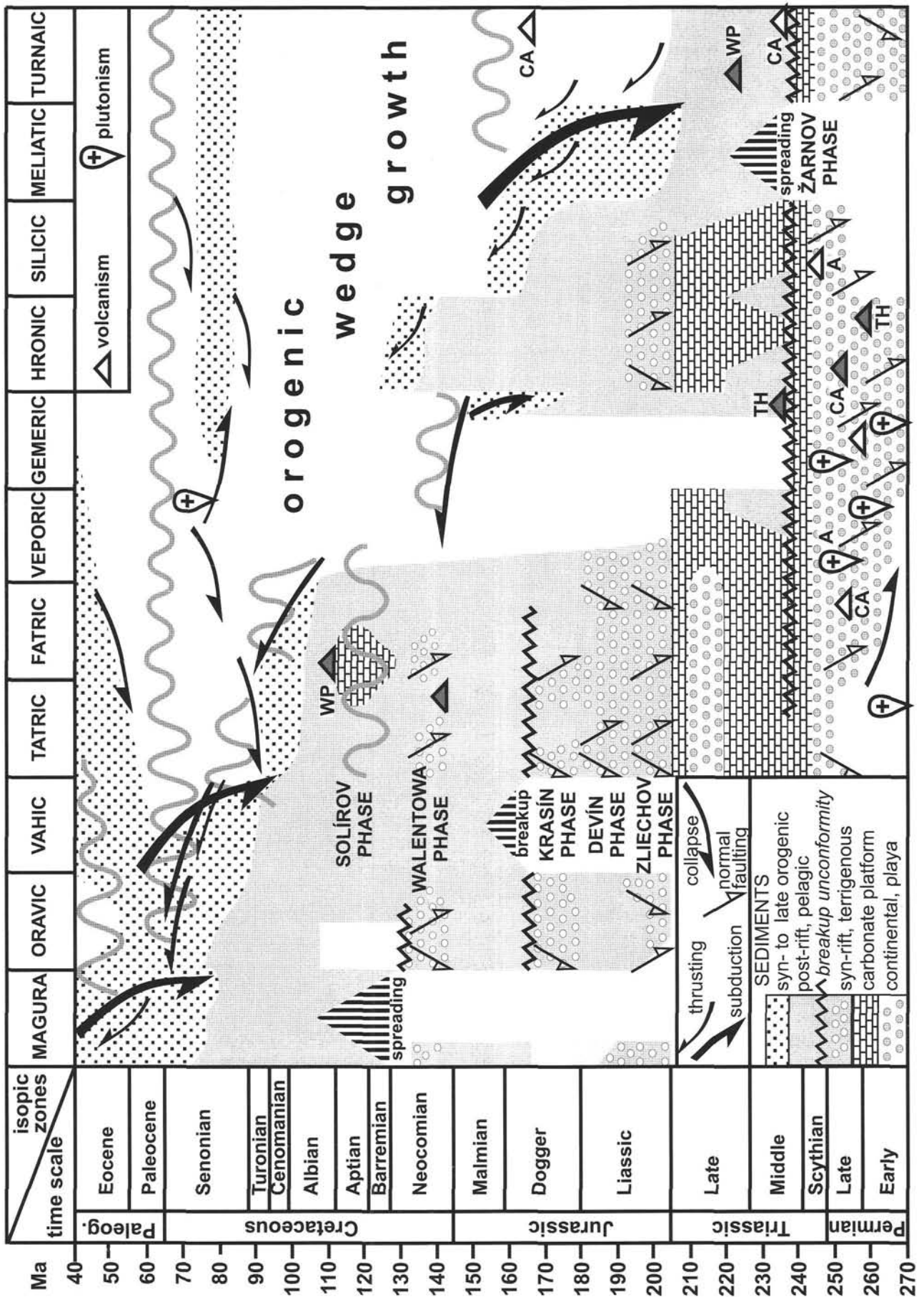
Hungary such as the Transdanubian Range and the Bükk and adjacent mountains, which show evolutionary affinities to the South Alpine-Dinaridic realms. The Meliata suture forms the divide from the CWC, although its position is mostly hidden and ambiguous. The CWC are built up by a system of north-verging basement and/or cover nappes of the Slovakocarpian tectonic system which formed during the Cretaceous. The contact between the CWC and EWC follows a narrow zone with intricate structure – the Pieniny Klippen Belt (PKB). The EWC (so-called Flysch Belt) are composed of two large nappe systems which form the Tertiary frontal accretionary wedge of the Western Carpathian orogen (Fig. 1, 2), the Rhenodanubian-Magura and the Silesian-Krosno-Moldavian.

The evolution of the IWC can be described as follows: Early Mesozoic Tethyan rifting which culminated in the opening of the Meliata Ocean occurred in the Middle Triassic, was followed by closure of this ocean during the Late Jurassic (e. g. KOZUR, 1991; KOVÁCS, 1992; HAAS et al., 1995; KOVÁCS et al., 2000). These events were followed by additional shortening phases, commonly displaying a southern polarity during the Early Cretaceous (the so-called “retro-wedge” in Fig. 7, which is formed by the IWC units of the Bükk Mts. – cf. CSONTOS, 1999). The position of the Meliata suture can be traced based on occurrences of tectonically dismembered formations containing oceanic Triassic and Jurassic sediments, ophiolites and blueschists.

The CWC are composed of three northward directed thick-skinned basement/cover sheets (the Tatric, Veporic and Gemic from bottom to top) and three systems of detached cover nappes (the Fatric, Hronic and Silicic – see Figs. 1, 2). Altogether these superunits comprise the Slovakocarpian tectonic system, which is the eastern analogue to the Austroalpine system of the Alps. Compared to the Austroalpine system, the basement sheets correlate with the Lower and Middle Austroalpine units (Infratatric and Veporic units), whereas the Tatricum has no equivalent in the Alps. The cover nappe system can partially be compared to the Northern Calcareous Alps (NCA). The Triassic formations of the Tatric, Fatric and northern Veporic superunits show close European affinities with Germanic-type epicontinental succession, while the broad Tethyan shelf represented by the southern Veporic, Gemic, Hronic and Silicic domains is charac-

Fig. 3

Tectonographic chart summarizing the Mesozoic tectonic evolution of the Western Carpathians. Abbreviations to geochemical typology of magmatism: A – alkaline to subalkaline (acid), CA – calc-alkaline (acid to intermediate), TH – tholeiitic (intermediate to basic), WP – within-plate (basic).





terized by increased Triassic subsidence of carbonate-dominated ramps, platforms, lagoons, intra-shelf basins and shelf edge and slope. During the Early Jurassic, the Triassic carbonate platform was broken apart and drowned, leading to the formation of a system of quickly subsiding rift basins separated by narrow ridges. During the Late Jurassic, the Silicic and Gemic zones adjacent to the Meliata Ocean underwent first contractional deformation after the closure of this ocean. During the Early Cretaceous, shortening and nappe stacking then affected the Hronic and southern Veporic zones and in mid-Cretaceous times it prograded into the northern Veporic, Fatric and southern Tatric domains (Fig. 3). The northernmost Tatric (Infratatic) zone was deformed during the Senonian. The syn-orogenic flysch sedimentation also migrated northwards during the Cretaceous (e. g. PLAŠIENKA, 1998, 1999).

The PKB is often characterized as a tectonic megabreccia, mélangé, or it was even considered to represent an olistostrome. However, the peculiar "block-in-matrix" structural appearance of the PKB is the result of later stages of deformation, due to along-strike transpressional and transtensional movements in the Tertiary (e. g. KOVÁČ and HÓK, 1997). Therefore, the PKB appears to be a tectonic mixture of cover units which differ in their provenances and tectonic histories. The Oravic units are considered to be PKB units *sensu stricto*, and are represented by the swell-type Czorsztyn, the basinal Kysuca-Pieniny and several transitional units. All of these units only contain Jurassic and Cretaceous strata (Fig. 3). The Oravic units were derived from an intra-oceanic continental ribbon or a marginal plateau in a Middle Penninic position, bordered to the Slovakocarpian domains by the South Penninic-Vahic Ocean and by the North Penninic-Magura Ocean to the North European Platform and/or the Silesian-Krosno ridges and basins. Most of the units that originated from the Vahic oceanic realm are hardly accessible in the Western Carpathians, only the Belice Unit of the Považský Inovec Mts. (Fig. 1) and the Iňačovce-Kričeho Unit which was drilled below the East Slovakian Neogene Basin, thus being the exceptions (PLAŠIENKA et al., 1994; SOTÁK et al., 1994; PLAŠIENKA, 1995a, b). After at least partial closure of the Vahic Ocean during the latest Cretaceous – earliest Tertiary, the Oravic units were then detached from their underthrust substratum and amalgamated with frontal elements of the Slovakocarpian nappes, mainly belonging to the Fatric (Križna) system (Drietoma, Manín, Klappe and related units – see PLAŠIENKA, 1995a and discussion therein). Along with the syntectonic Senonian – Paleogene sediments (Gosau Group), the units of the Oravic and Fatric systems were strongly deformed between the basement-involved Slovakocarpian orogenic wedge and the developing Carpathian frontal accretionary wedge (EWC) to form the present PKB.

The EWC contains rootless nappes of the Magura and Silesian-Krosno systems that include Jurassic to Lower Miocene sediments which are dominated by flysch lithologies. The Magura nappes rarely involve Jurassic and lowermost Cretaceous strata, whereas sediments from the Barremian and younger are more widespread. The more external EWC units, the Silesian Unit in particular, comprise continuous successions starting from the uppermost Jurassic (Tithonian).

### 3. Subsidence history

#### 3.1 Methodical approach

Subsidence is defined as a downward displacement of the Earth's surface relative to an arbitrary reference plane, e. g. a local erosional base level, the geoid, or most commonly the mean sea level for marine basins. In a sedimentary basin, which is part of the Earth's surface exhibiting an excess subsidence (or, less commonly, reduced uplift) in relation to its surroundings, subsidence creates an accumulation space filled with sediments to a various degree. There are several ways of how to generate subsidence and hence sedimentary basins and most of them consider at least some tectonic mechanism as a triggering factor which mostly occurs in contractional, or extensional tectonic settings. Since extensional tectonic regimes are more effective in creating accumulation space; the majority of sedimentary basins on the Earth are extensional basins, especially those occurring at divergent plate boundaries and in plate interiors.

Formation of a sedimentary basin in an extensional tectonic setting requires a reduction in thickness of the underlying crust, which can be most easily accomplished by stretching and thus thinning continental lithosphere. The depth vs. time curve of tectonic subsidence of sedimentary basins formed by stretching of the continental lithosphere therefore follows a characteristic path. Initially, during the first 10-20 Ma of syn-rift subsidence, the curve is steep and subsidence is rapid (modelled as instantaneous), recording the isostatic compensation of crustal thinning. Later on, the subsidence curve acquires a smooth shape and reflects exponential heat decay due to lithospheric cooling during the thermal subsidence phase (MCKENZIE, 1978). The characteristics of the subsidence curves, necessary for an evaluation of the mechanisms of a basin origin, can be obtained by backstripping analyses of the sedimentary record in that particular basin. The backstripping techniques have been developed to analyse stratigraphic logs of drillcores from uninverted, or only slightly inverted basins. Application of this technique on inverted and tectonically disturbed basins is hampered by many significant problems, nevertheless, it was successful in some instances (e. g. POPRAWA et al., 2002).

Although the stratigraphic record is often seemingly continuous, the Western Carpathian units seldom provide sections suitable for backstripping analyses. This is mainly due to an inadequately refined stratigraphic record of pre-Tithonian strata, significant uncertainties in exact bathymetry, frequent tectonic omissions and/or duplications and local erosion. An attempt of backstripping analyses of some Western Carpathian sections by WOOLER et al. (1992), who used the stratigraphic logs of RAKÚS et al. (1989), was not very successful since these authors recognized only one, Triassic principal rifting phase and failed to explain frequent post-Triassic turns in subsidence rates, or even conversions of subsidence into uplift. They also did not consider the abyssal depth of sedimentation of radiolarites associated with deep-water pelagic successions, therefore both their values defining the maximum subsidence and the lithospheric stretching factors controlling the subsidence appear to be underestimated.

The approach applied in the present paper does not aim at the determination of exact subsidence curves of individu-

al Western Carpathian sedimentary successions; it rather emphasizes their relative subsidence and/or uplift tendencies inferred from bathymetric estimates (Fig. 4). Since the Jurassic – Lower Cretaceous sedimentary successions represent fillings of sediment-starved basins and they seldom exceed 1 km of cumulative thickness, the subsidence during this time was generally uncompensated by sediments and the inferred bathymetry curves can be approximated with tectonic subsidence history. It is generally assumed in this study that all vertical movements reconstructed are tectonically driven. Although the coincidence of some tectonic events with important sea-level changes may have amplified the expressions of the former at certain time intervals, it is inferred that the tectonically driven surface subsidence and uplift intervals described below considerably exceed the eustatic effects in magnitude.

Almost all information used in this paper comes from the sedimentary record, information about the sedimentary environments, and from the thickness and age of sedimentary formations. An emphasis is given to the "turning points" in the tectonic evolution, especially to the presence of break-up unconformities which are considered to be indications of commencement of the oceanic crust production, and to the

uplift events which are interpreted either (1) as the thermal expansion and/or isostatic response due to heterogeneous lithospheric stretching, or (2) as a consequence of the build-up of intraplate compressive stresses. This approach will then be applied to several Western Carpathian lithotectonic units, especially the Mesozoic (particularly pre-Senonian) sedimentary successions which are briefly characterized below and interpreted in terms of subsidence vs. uplift evolution. The following description below is based upon the likely south-north (in the present coordinates) palinspastic arrangement of the units considered (Fig. 3).

### 3.2 Units derived from the proximity of the Meliata Ocean

The Turna Superunit consists of several cover nappe units occurring in the southernmost Western Carpathian zones, where they override the Meliatic units and underlie the nappes of the Silicicum. They comprise slightly metamorphosed and in some places strongly deformed sedimentary formations of Middle Carboniferous to Jurassic (VOŽÁROVÁ and VOŽÁR, 1992), or only Triassic age (LESS, 2000). The Triassic succession involves Scythian shales

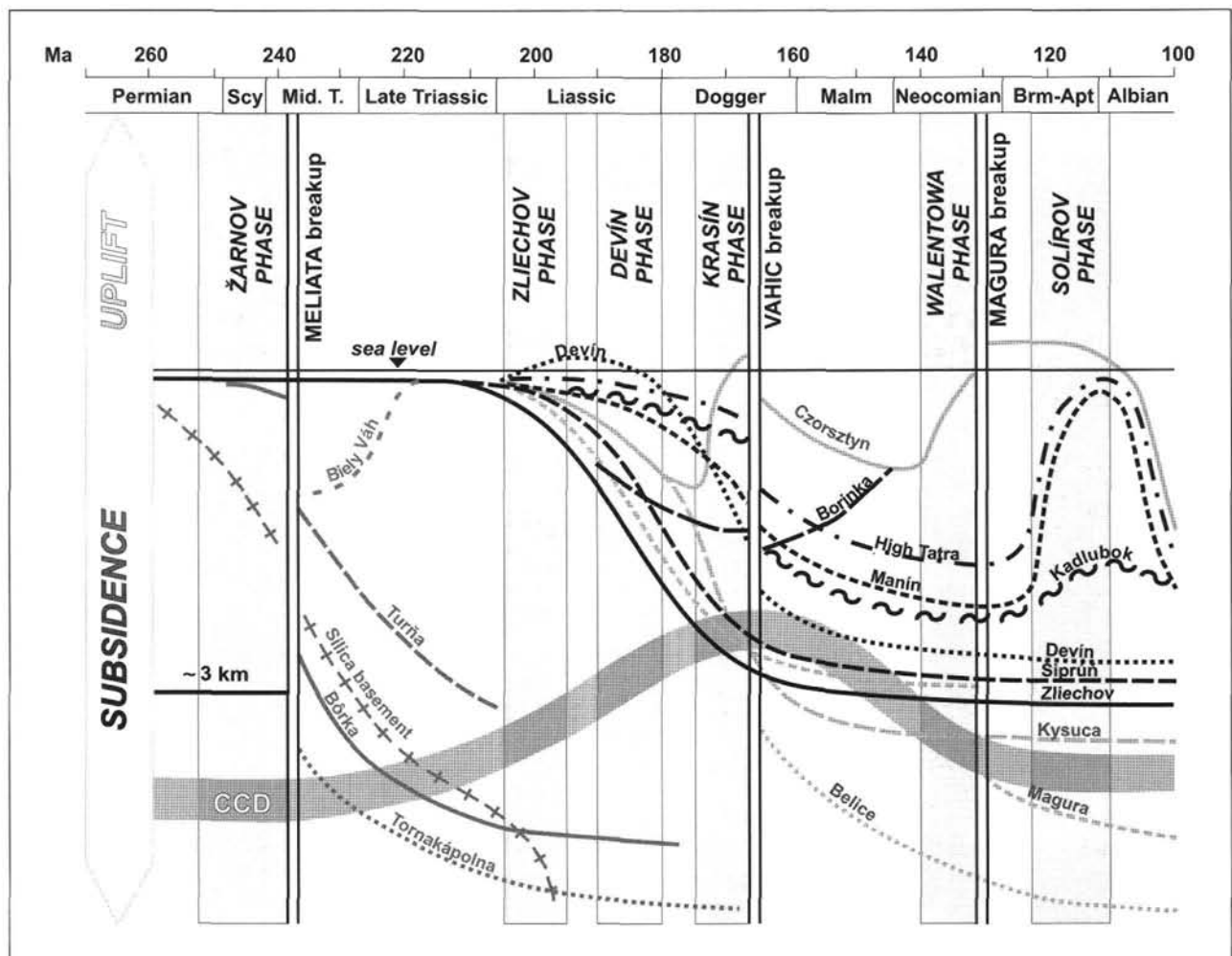


Fig. 4  
Relative subsidence/uplift curves inferred from bathymetry of various Western Carpathian sedimentary successions. The turning periods are interpreted as distinct extensional tectonic phases (except the probably contractional Solírov Phase), some of them grading into ocean break-up (double vertical lines).

and marlstones, Lower Anisian Gutenstein and Steinalm Formations followed by Pelsonian red pelagic limestones, which often fill neptunian dykes and cavities in underlying platform limestones. The Ladinian – Late Triassic sequence is pelagic, mainly with nodular limestones (e. g. Pötschen Fm.) and Carnian Raibl shales. Paleogeographically, the Turnaic successions are usually placed at the southern margin of the Meliata Ocean (e. g. Kovács et al., 2000). They reflect Pelsonian break-up of the carbonate platform and subsequent gradual uncompensated post-rift thermal subsidence (*Turňa Succession* in Fig. 4). Equivalents of the Turnaic (= Süd-Rudabányaic) units from the Eastern Alps were described by KOZUR and MOSTLER (1992).

The highly dismembered subduction complexes of the Meliatic Superunit include Jurassic dark shales, sandstones, radiolarites, ophiolite- and blueschist-bearing mélanges and olistostromes (e. g. KOZUR, 1991; KOZUR and MOCK, 1997; MOCK et al., 1998). Sedimentary olistolites are composed of Lower Anisian platform carbonates with neptunian dykes of Pelsonian red pelagic limestones, Ladinian and Upper Triassic radiolarites and various pelagic limestones. Some parts of the Meliatic ophiolitic complexes were incorporated as blocks and slabs into evaporitic breccias at the soles of the overriding nappes of the Silicicum (Triassic pillow lavas and radiolarites – RÉTI, 1985; *Tornakápolna Succession* in Fig. 4). The lower part of the Meliatic accretionary complex is formed by a partly independent tectonic unit, called the Bôrka Nappe (e. g. MELLO et al., 1998), which overthrusts the Paleozoic complexes of the Gemeric Superunit. The Bôrka Nappe is composed of Gemeric-type Upper Paleozoic and Scythian strata followed by platform carbonates probably Anisian of age, Middle Triassic basic volcanics and Upper Triassic – Jurassic siliceous shales. All these strata were affected by high pressure/low temperature metamorphism (FARYAD, 1995) during the Upper Jurassic (MALUSKI et al., 1993; DALLMEYER et al., 1996; FARYAD and HENJES-KUNST, 1997). Paleogeographically, the *Bôrka Succession* (Fig. 4) represents an original distal southern passive margin of the Slovakocarpian Triassic shelf domain, in which the Middle Triassic break-up is recorded by extrusions of basaltic lavas followed by thermal subsidence (right panel of the Gemeric column in Fig. 3). The Alpine equivalents of the Meliatic units were identified by MANDL and ONDREJIČKOVÁ (1991) and KOZUR and MOSTLER (1992) in the Florianikogel area of the NCA.

The Silicic Superunit (Silica Nappe s.l.) is a system of rootless cover nappes occupying the highermost structural position in the Western Carpathian Mesozoic nappe stack. Its palinspastic position with respect to the Meliata Ocean is still a matter of controversies (see KOZUR, 1991; Kovács, 1992; KOZUR and MOCK, 1997; LESS, 2000 and PÉRO et al., 2002 arguing for the "northern" position vs. Hók et al., 1995 and RAKÚS, 1996 holding an opposite opinion). Overall, the paleogeographic arguments in favour of its setting on the northern (outer) shelf seem to be more convincing. The debate about this problem is analogous to the current debate about the paleogeographic position of the Upper Juvavic nappes (which are largely comparable to the Silicic units by their lithostratigraphic content) with respect to the lower Upper Austroalpine units of the NCA. The structurally-based view of SCHWEIGL and NEUBAUER (1997) and NEUBAU-

ER et al. (2000) about the position of the Upper Juvavic unit at the southern margin of the Meliata-Hallstatt Ocean was rejected based on stratigraphic arguments (GAWLICK et al., 1999; MANDL, 2000) which favour its location on the northern Tethyan shelf. The present knowledge of the Western Carpathians does not allow solving this problem either, since the Silicic nappes represent late, out-of-sequence thrust and/or extensional allochthonous outliers that apparently do not agree with the generally northward polarity of the underlying basement thrust sheets (Fig. 2). Consequently, the palinspastic positions of both, the Upper Juvavic and Silicic units, still remain ambiguous. The oldest member of the Silicic nappes are Upper Permian evaporites after their deposition subsidence was considerable, but compensated by sedimentation of shelf clastics (Scythian) and platform carbonates (Middle – Upper Triassic), building altogether a 3-4 km thick sequence. The Pelsonian event led to the drowning of the platform and is locally recognizable in intra-shelf basin successions, but reef-cored carbonate platforms kept pace with subsidence (Wetterstein Fm. – e. g. MICHALÍK et al., 1993a; POLÁK et al., 1996; WIECZOREK, 2000). The southernmost Silicic units (Bódva Nappe) exhibit a distinct post-Pelsonian pelagic sedimentation (Hallstatt, Zlambach Fm.) and provide transition to the Meliata Ocean environments. Lower Jurassic strata not only record drowning of the platform and pelagic swell formation (Hierlatz, Adnet Fm.), but also basinal sedimentation (Allgäu Fm.). Middle Jurassic to Oxfordian deposits show additional (compressional?) deepening with radiolarites and olistostromes. To indicate the Triassic subsidence history, the basement subsidence path is outlined in Fig. 4 (*Silica basement*) instead of the surface subsidence shown in other curves.

The Silicic successions show close relations to the more northerly emplaced superficial nappes of the Hronic Superunit (Choč Nappe s.l.), which resemble the Alpine Tirolic and Upper Bajuvaric units as far as their Triassic lithostratigraphies (Hauptdolomit and Dachstein facies) are considered. The Hronic nappes are superimposed on the Patric and North Veporic units (Fig. 1, 2) where the Hronic lower structural complex is composed of Upper Carboniferous – Scythian succession of continental and shallow marine clastics (Ipoltica Group – VOZÁROVÁ and VOZÁR, 1988), dominated by thick, riftogenous Permian red-beds and basic volcanics, and the tectonically partly independent upper structural complex is mainly built up of Middle – Upper Triassic shelf carbonates. Latter show the formation of a Lower Anisian ramp and a platform followed by facies differentiation after the Pelsonian. This manifests itself as carbonate buildups (Ramsau, Wetterstein Fm.) intervened by basinal successions (*Biely Váh Succession* in Fig. 3) which include pelagic limestones (Reifling Fm.) and Carnian clastics (Lunz Fm.) – e. g. MAHEL' (1979), MASARYK et al. (1993), MICHALÍK et al. (1993a), POLÁK et al. (1996). The high production of Upper Triassic platform carbonates compensated the decaying subsidence. The Triassic carbonate platform was broken apart and subsequently drowned during the Early Jurassic, whereby sedimentary successions show a change from a gradual, uncompensated subsidence from condensed pelagic swell facies (Adnet Fm.) to bathyal basins (Barnstein, Oberalm Fm.). Hauterivian synorogenic siliciclastic turbidites then terminate the Hronic successions in some places.



### 3.3 Slovakocarthian units

The Triassic carbonate platform facies arrangement of the Hronic area exhibits close relationships to the more southerly located Silicic area, but the exact provenance of both is not exactly known, because when taking their present position on the northern Meliatic shelf into consideration, problems arise since the Silicic nappes occupy the structural position above, not below the Meliatic stack (Fig. 2). Instead, the Meliatic units (the transitional Bôrka Nappe in particular) directly override the Gemeric Superunit, which is almost devoid of Mesozoic cover sequences. The more external Veporic Superunit is a huge thick-skinned thrust sheet carrying two distinct sedimentary cover units. The South Veporic Foederata Unit only contains Triassic sediments recording a transition from continental to shallow marine environments during the Scythian and early Middle Triassic. During the Ladinian – Carnian the platform drowned, but re-established during the Norian. The North Veporic Vel'ký Bok Unit contains already tripartite Germanic-type Triassic succession, followed by Jurassic and Cretaceous strata similar to those of the main Fatric realm (*Zliechov Succession* in Fig. 4).

Triassic sediments of most parts of the Fatric and Tatric realms are formed by epicontinental successions which overlap a penexplained substratum with triple division similar to that of the Germanic Basin. Scythian alluvial plain clastics of rather uniform thickness overlie either restricted Permian continental rift basins, or directly Variscan high-grade basement rocks. Evaporites and marine carbonates appeared at the end of the Scythian. The Middle to Late Triassic subsidence was very slow and fully compensated by sediments, not exceeding 1500 m in thickness. Carbonate ramp deposits (Gutenstein, Ramsau Fm.) are characteristic for the Middle Triassic and the Carnian and continental playa lake and sabkha deposits prevailed during the Norian (Carpathian Keuper Fm.). The Rhaetian shallow marine strata are preserved in the Fatric area only.

Differentiation of sedimentary environments during the Early Jurassic led to the deposition of variously composed Jurassic – Cretaceous sedimentary successions, the most important are characterized below. The Fatric Superunit was established as a wide basinal area between the Tatric and Veporic domains, and was diminished by crustal shortening processes during the Late Cretaceous. The Fatricum is a cumulative term (introduced along with Hronicum by ANDRUSOV et al., 1973) for a system of cover nappes (Křížna Nappe s.l.) which occur in the northern part of the CWC and to a lesser extent also in the PKB. Its principal constituent is the Křížna décollement cover nappe, which overrides the Tatric basement and its cover. The Křížna nappe system can partially be correlated with the lower Bajuvaric units, e. g. the Frankenfels and Allgäu Nappes except for the Upper Triassic strata.

The Křížna Nappe is dominated by the Jurassic – Cretaceous *Zliechov Succession*, characterized by a sequence of syn-rift, post-rift and synorogenic formations (Fig. 4). The syn-rift strata record increasing, uncompensated subsidence ranging from littoral clastics to hemipelagic spotted marls ("Fleckenmergel", Allgäu Fm.) during the Lias. The Middle Jurassic to Early Cretaceous thermal subsidence gave rise to eupelagic sediments, partially deposited below the CCD during the Late Dogger and the Oxfordian (e. g. BORZA et al., 1980; POLÁK et al., 1998). In mid-Cretaceous

times, the Zliechov Basin changed into a compressional basin in front of the advancing orogenic wedge. It then received an increasing amount of clastic material derived from the wedge, which fed the coarsening-upward synorogenic flysch deposits (Poruba Fm.), thus terminating the Zliechov Succession. This Albian – Cenomanian exotics-bearing flysch sequence was often paralleled with the Alpine "Cenoman Randschuppe" and the Losenstein Fm. (see e. g. WAGREICH, 2001).

The northern margin of the Zliechov Basin was characterised by a distinct shallowing of the sedimentary successions and by the presence of various Jurassic slope and/or swell facies, which constitute the lowermost Vysoká-type Fatric units. The external Manín Unit (presently located at the southern margin of the PKB, i. e. in the "Periklippen Belt" – Fig. 1), forms the transition to the southernmost part of the Tatric Superunit. Both units, the *Manín* and the *High-Tatra Successions* (Fig. 4) are dominated by comparatively shallow marine pre-Bathonian strata with numerous gaps and erosion surfaces. The late Bajocian – early Bathonian break-up resulted in a subsidence to bathyal depths, but still with distinct signs of a relative elevated position compared to the surrounding Šiprúň and Zliechov Basins (KOŠA, 1998; RAKÚS and OŽVOLDOVÁ, 1999). The most conspicuous feature of both of these successions is a remarkable shallowing during the Barremian – Lower Albian, indicated by the presence of Urgonian-type platform limestones amidst pelagic sequences. By the middle Albian, the platform was rapidly drowned, succeeded by a condensed horizon and then by pelagic marls (LEFELD, 1988; RAKÚS, 1977; MICHALÍK and VAŠIEK, 1984, 1987; BORZA and MICHALÍK, 1987; MICHALÍK and SOTÁK, 1990; WIECZOREK, 2000, 2001). The intra-Tatric *Šiprúň Succession* (Fig. 4) represents a basinal area with a subsidence history similar to the Zliechov Basin, but in contrast it shows partial uplift and erosion during the earliest Jurassic (BUJNOVSKÝ et al., 1979) and the main syn-rift subsidence period during the Late Lias, and it reached slightly lesser depths during the post-rift thermal subsidence period. The Tatric successions are terminated by the Albian – lower Turonian siliciclastic flysch sequence (Poruba Fm.). The northern flanks of the Šiprúň Basin are represented by the Kuchyňa and *Devín Succession* (Fig. 4) which show signs of remarkable Liassic uplift and erosion of pre-rift strata and a subsequently rapid subsidence during the Dogger (PLAŠIENKA et al., 1991; MICHALÍK et al., 1993b). The neighbouring *Kadlubok Succession* corresponds to a pelagic high with thin, mostly condensed strata, numerous gaps, neptunian dykes and hardgrounds (MICHALÍK et al., 1994). The Infratatic (i. e. the structurally lowermost and paleogeographically outermost part of the Tatricum) *Borinka Succession* substantially differs from any other succession previously described. It is composed of exceptionally thick Lower – Middle Jurassic syn-rift sequences of scarp breccias, debris flows, turbidites and anoxic shales. Large amounts of terrigenous clastic material indicates its deposition in the vicinity of a subaerial high, named the North-Tatric Ridge. The Borinka Succession is interpreted to represent a filling of a marginal halfgraben at the northern edge of the Tatricum (PLAŠIENKA, 1987; PLAŠIENKA et al., 1991) and its positions is supposed to be analogous to the Lower Austroalpine margin of the Eastern Alps (HÄUSLER, 1988; HÄUSLER et al., 1993). Although the Tatric Superunit probably has no direct prolongation into the Alps, the analogues of the

Infratatic elements can be identified in the Lower Austroalpine basement/cover units.

### 3.4 Penninic units

During the Late Jurassic and Cretaceous, the northern Tatic (Infratatic) margin faced the South Penninic oceanic realm named the Vahic Ocean (MAHEL, 1981). In the present surface structure of the WC, it is represented by only one well-defined element, the Belice Unit of the Považský Inovec Mts. (Fig. 1). The *Belice Succession* includes slices of amygdaloidal basalts (discriminated as within-plate basalts based on trace element analysis by SOTÁK et al., 1993). The highly dismembered and imbricated sedimentary rocks are composed of Upper Jurassic ribbon radiolarites, Lower Cretaceous dark siliceous slates with thin intercalations of Calpionella limestones in the lower part, and Senonian coarsening-upward flysch sequence (KULLMANOVÁ and GAŠPARIKOVÁ, 1982; PLAŠIENKA et al., 1994). This succession is similar to the South Penninic oceanic lithologies of the Alps (e. g. DIETRICH, 1970; WEISSERT and BERNOULLI, 1985; DECKER, 1990; STAMPFLI et al., 1998).

The Vahic Ocean separated the Slovakocarpethian realm from the Oravic continental ribbon or marginal plateau. The Oravic Superunit involves several successions occurring exclusively in the Pieniny Klippen Belt. The basinal *Kysuca Succession*, representing a former slope environment neighbouring the Vahic Ocean, exhibits the Jurassic – Early Cretaceous subsidence pattern almost identical with that of the Zliechov Basin (Fig. 4). The lower Liassic Arietites-bearing sandstones (Gresten Fm.) occur in places, but younger Liassic – Aalenian strata also record deepening with spotted hemipelagic marls and black shales, partly with intercalations of turbiditic sandstones. Deep-water siliceous, cherty and nodular limestones, radiolarites and Calpionella limestones constitute the Middle Jurassic – Neocomian Kysuca formations, followed by mid-Cretaceous marlstones and Senonian synorogenic flysch deposits. The contrasting *Czorsztyn Succession* represents a ridge or swell environment recording very complex subsidence history. The comparatively deep-water Liassic – Aalenian sequence was replaced by extremely shallow-water encrinuritic and sandy limestones during the Bajocian. By the end of Bajocian, these sandbanks collapsed and experienced Late Jurassic subsidence to bathyal depths indicated by the ammonitico rosso facies (e. g. WIERZBOWSKI et al., 1999). However, parts of the Czorsztyn Ridge remained in a very shallow position, indicated by the presence of Upper Jurassic platform limestones (Mišík, 1979). During the Neocomian, the ridge was elevated again, as indicated by shallow-water sediments and signs of emersion. The post-rift thermal subsidence in the Mid-Cretaceous definitely drowned the Czorsztyn Ridge, which then turned into a submerged pelagic swell (Mišík, 1994) characterized by sedimentation of variegated marls of the "couches-rouges" type during the Late Cretaceous. The dissimilar Kysuca and Czorsztyn Successions are linked by several "transitional" successions showing characteristic features of both (Czertezik, Niedzica, Pruské, Branisko Successions – e. g. BIRKENMAJER, 1977).

The northern margin of the Oravic ribbon faced the Magura Ocean. The *Magura successions* rarely include sediments older than the Senonian (except the Grajcarek unit), therefore reconstruction of their Jurassic – Early Cre-

taceous evolution is rather difficult. The Jurassic rocks are known only from small tectonic and/or sedimentary blocks and pebbles in younger formations (SOTÁK, 1990). These would indicate a basinal environment with similar facies succession as in the Zliechov or Kysuca Basin. The lowermost Cretaceous strata are known from several small tectonic slices in front of the Magura Superunit in Moravia, where they are composed of marly pelagic limestones with slump breccia bodies. The oldest strata that build up the continuous Magura successions are Barremian – Aptian in age, and are composed of deep marine, calcite-free, sometimes also calcareous shales and turbiditic sandstones (Gault "Flysch" and Hluk Fm.). They change into mid-Cretaceous distal passive-margin turbidites (Kaumberg Fm.) and then into the synorogenic Senonian – Paleogene flysch (OSZCZYPKO, 1992; ŠVÁBENICKÁ et al., 1997; MALATA, 2000). The Magura Superunit is traditionally correlated with the East Alpine Rhenodanubian Flysch Belt (e. g. SCHNABEL, 1992).

The Grajcarek Unit was described on the Polish territory only (BIRKENMAJER, 1977), where it represents the innermost Magura subunit adjacent to the Klippen Belt, partly overridden by the Czorsztyn Unit (JUREWICZ, 1998). The Grajcarek Unit embraces a complete basinal succession starting with the Toarcian spotted marls and ending with the Maastrichtian wildflysch (Jarmuta Fm.). The Cretaceous strata of the Magura successions represent "dirty", terrigenous sediments of Bündnerschiefer-type deposited in proximity of the European passive margin. These sediments are a typical feature of the North Penninic basins (Rhenodanubian and Valais – e. g. WILDI, 1988; SCHNABEL, 1992; FLORINETH and FROITZHEIM, 1994).

## 4. Timing of the principal Mesozoic rifting events

### 4.1 Permian – Triassic events

The Early Mesozoic rifting was preceded by significant distensional tectonic events during the Permian (VOŽÁROVÁ and VOŽÁR, 1988). A notably thick, rift-related, continental sequence forms the sole of the Hronic cover nappe system. In this sequence, the Permian red-beds are associated with voluminous calc-alkaline to continental tholeiitic, andesitic and basaltic volcanism, which erupted in two distinct phases during the Early and Late Permian (VOŽÁROVÁ and VOŽÁR, 1988; VOŽÁR, 1997), but the original paleogeographic position of this mature rift sequence is not known. Other deep, but comparatively narrow Permian rift basins originated in the North Tatic, Veporic and Gemeric zones, accompanied by calc-alkaline and/or subalkaline volcanism and A-type (UHER and BROSKA, 1996), as well as S-type (POLLER et al., 2002) granitic plutonism. The duration of this rift-related silicic magmatism has been estimated to last as long as the Middle Triassic (KOTOV et al., 1996; PUTIŠ et al., 2000; UHER and BROSKA, 2000). The site of the future Meliata oceanic rift was characterized by strong Scythian subsidence and shallow marine terrigenous sedimentation accompanied by alkaline rhyolitic volcanism (UHER et al., 2002). These features indicate that the terminal Variscan events – orogenic collapse and lithospheric attenuation, could have genetically been related to the early Alpine rifting in the southern CWC

zones, which ultimately led to the opening of the Meliata Ocean (Fig. 3).

The Upper Anisian (Pelsonian) initial opening of the Meliata Ocean is designated as the Žarnov Phase here (named after the Žarnov Fm., which is composed of red pelagic limestones of this age described by MELLO and MOCK, 1977). In units derived from areas adjacent to the Meliata rift, this event is indicated by the unconformity between the Lower Anisian ramp and platform carbonates and Pelsonian red pelagic limestones. The younger Triassic pelagic facies include deep-water-, partially condensed nodular limestones and Ladinian – Norian radiolarites.

## 4.2 Jurassic events

Based on the timing of turning points in the bathymetric evolution (Fig. 4) and on the character and distribution of syn- and post-rift sedimentary sequences, four principal Jurassic – Cretaceous rifting phases can be discerned within the Western Carpathian area: (1) two Early Jurassic rifting phases due to lithospheric stretching and breakdown of the epi-Variscan Triassic platform; (2) one rifting phase as a result of the break-up of the South Penninic-Vahic Ocean in the late Dogger and (3) one rifting phase as a result of the break-up of the North Penninic-Magura Ocean in the Early Cretaceous (Fig. 4, 5).

The Hettangian-Sinemurian “wide-rift” type Zliechov Phase is well recorded in the Tatric and Fatric domains. It led to a more-or-less uniform stretching of the epi-Variscan continental lithosphere and created broad subsiding intracontinental basins (Zliechov, Šiprúň, Kysuca-Czorsztyn-Magura – Fig. 5) separated by narrower subaerial highs, which later submerged (South-, or High-Tatric and North-Tatric Ridges). Lithospheric stretching and crustal heating during this rifting event is documented by a radiometrically dated thermal event in the Tatric and North Veporic basement around 200 Ma (MALUSKI et al., 1993; KRÁL et al., 1997), but no volcanism occurred at that time. For the next 100 Ma after the Zliechov Phase, sediment-starved basins within the Tatric area (Šiprúň Basin) and the Fatric zone (Zliechov Basin) of the Slovakocarthian realm were subjected to slow thermal subsidence and pelagic sedimentation.

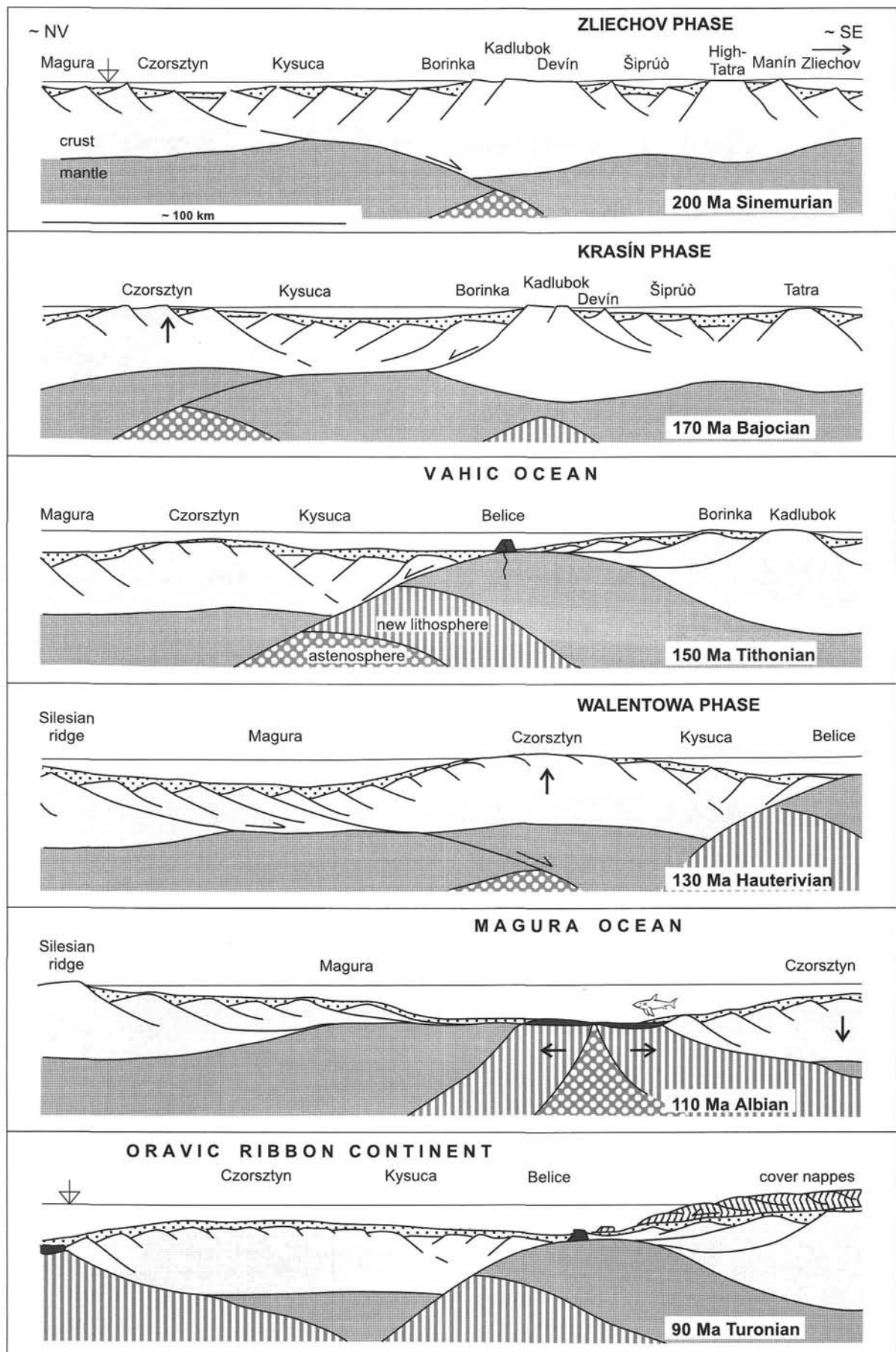
The less distinct Toarcian Devín Phase only occurs on a very local scale. The area of the North-Tatric Ridge (partly analogous to the Lungau Swell of TOLLMANN, 1977) experienced Lower Jurassic uplift and erosion of pre-rift Triassic successions, whereby Upper Liassic – Lower Dogger extraclastic limestones overlap deeply eroded Triassic strata, or directly overlie pre-Alpine basement complexes in some places (MICHALÍK et al., 1993b; PLAŠIENKA, 1999). The Devín Phase was probably also the main stage of extensional block tilting indicated by an increasing contrast between the hemipelagic, partly anoxic sedimentation in halfgrabens (Allgäu Fm.) and the deposition of well aerated “ammonitico rosso” limestones (Adnet Fm.) on the edges of domino blocks (SOTÁK and PLAŠIENKA, 1996; WIECZOREK, 2000, 2001). These phenomena are tentatively interpreted as having been caused by a transfer of the rifting mode into a locally slightly asymmetric, “simple shear” extension during the Devín Phase.

The Bajocian Krasín Phase strongly affected areas north of the North-Tatric Ridge. The “simple shear” asymmetric extension (adopting the model by WERNICKE, 1985) along

the foreland-ward dipping lithospheric detachment fault resulted in additional crustal extension in the Kysuca Basin and the probably late Bajocian to early Bathonian break-up and opening of the Vahic (South Penninic) Ocean. The break-away zone of the detachment fault was obviously situated along the bounding fault of the Infratatic Borinka halfgraben, which received exceptionally thick Middle Jurassic terrigenous scarp breccias (Somár Fm. – PLAŠIENKA, 1987) from the North-Tatric Ridge, forming the lower plate margin at that time. On the other hand, the Czorsztyn Ridge originated at the distal upper plate margin by thermal uplift above the subcrustal part of the detachment fault (Fig. 5). The uplift is indicated by remarkable shallowing and scarp breccias with signs of freshwater cementation (Krasin Breccia – MIŠÍK et al., 1994a; AUBRECHT et al., 1997). Coeval, allodapic crinoidal limestones (Samášky Fm. – AUBRECHT and OŽVOLDOVÁ, 1994), were deposited in slope environments (Pruské Succession). The late Bajocian to early Bathonian thermal collapse and break-up unconformity between the syn- and post-rift strata has also been identified in ridge areas south of the Vahic Ocean (DUMONT et al., 1996; WIECZOREK, 2000, 2001). Simultaneously, the basinal areas (Magura, Vahic, Šiprúň, Zliechov) submerged to abyssal depths below the CCD, as indicated by widespread deposition of radiolarites during the Callovian up to the Kimmeridgian (Fig. 4).

## 4.3 Cretaceous events

The Berriasian – Hauterivian Walentowa Phase marks the further foreland-ward migration of rifting and is interpreted to record the break-up of the Magura Ocean. The break-up was, similar to the Krasin Phase, preceded by asymmetric rifting. In this case the direction of the detachment fault can be reconstructed as hinterland-ward dipping. Lithospheric extension and mantle upwelling triggered the second thermal uplift event of the upper plate, the Czorsztyn Ridge, which is manifested through shallowing of sedimentary successions, syn-rift debris flow deposits and carbonate scarp breccias (Walentowa Breccia – BIRKENMAJER, 1977). This is followed by a widespread surface uplift, karstification, erosion and non-deposition until the Albian. Coeval, the allodapic Horná Lysá Limestone and the Hauterivian turbidites occur in the basinal Kysuca Succession (MIŠÍK et al., 1994b; AUBRECHT, 1994). The same rifting event was also detected on the other side of the Magura Ocean, in proximity to the Silesian Ridge which is in the lower plate position (ELIÁŠ and ELIÁŠOVÁ, 1984; REHÁKOVÁ et al., 1995; ELIÁŠ et al., 1996), as well as in the Silesian Basin behind this ridge (KROBICKI and SŁOMKA, 1999). The Tatric-Fatric realm (including the swell areas) is characterized by a rather uniform pelagic sedimentation during the Neocomian. However, carbonate scarp breccias and associated basic volcanics indicate reactivation of normal faults between the basin and ridge areas (Nozdovice Breccia – MICHALÍK et al., 1996; STANISZEWSKA and CIBOROWSKI, 2000). In the Zliechov Basin, pelagic sedimentation was interrupted by incursions of turbidites, which may be also related to the Walentowa Phase. Valanginian terrigenous, siliciclastic, chrome spinel-bearing turbidites (related to nappe stacking in the inner Carpathian zones) were followed by Hauterivian allodapic limestones derived from the northerly located South Tatric Ridge (MICHALÍK et al., 1996; WIECZOREK, 2000).



Remarkable subsidence of the Magura Basin down to abyssal depths after the Walentowa Phase and Magura Ocean break-up is revealed by hemipelagic and turbiditic sedimentation commonly below the CCD starting from the Barremian throughout the Cretaceous – see Fig. 4. The Walentowa Phase was also accompanied and followed by submarine extrusions of primitive, mantle-derived alkaline basalts starting in the Berriasian up to Lower Albian which occur in the Fatric, Tatric and Silesian domains (e. g. SPIŠIAK and HOVORKA, 1997; LUCIŃSKA-ANCZKIEWICZ et al., 2002).

The above characterized distensional tectonic phases were post-dated by an additional distinct tectonic event, designated as the Solírov Phase here (partly corresponding to the Manín Phase defined by ANDRUSOV, 1968). This event occurred during the Barremian – Early Albian in zones south of the Vahic Ocean only. It is indicated by the growth of the Urganian carbonate platform on the former South-Tatric Ridge and by tectonically driven re-sedimentation events around the North-Tatric Ridge (calciturbiditic Solírov Fm. – JABLONSKÝ et al., 1993). Both Tatric ridges were once more elevated from bathyal depths to the sea level, but were rapidly drowned again afterwards. Shortly after this phase, in the Middle Albian, the synorogenic, coarsening-upward flysch sedimentation commenced in the Fatric and Tatric domains (Poruba Fm.).

## 5. Discussion

### 5.1 Kinematics of pre-orogenic rifting in the Western Carpathians

The opening of the Meliata, or Meliata-Hallstatt Ocean is commonly interpreted as the result of back-arc rifting generated by a northward subduction of the Paleotethys below the Eurasian plate (e. g. STAMPFLI, 1996). This interpretation is corroborated by widespread Middle Triassic calc-alkaline arc volcanism in the South Alpine-Dinaridic-Pelso realm (Pietra Verde, Buchenstein, Szentistvánhegy Fm. – see e. g. SZOLDÁN, 1990), which was, at least in its eastern part, separated by the Meliata rift from the North European Platform at that time. The Meliata ophiolites are strongly dismembered and do not provide an unambiguous geodynamic information, since the geochemical signals of the arc, MORB and within-plate basalts were encountered at different localities (FARYAD, 1995; IVAN and KRONOME, 1996). Nevertheless, IVAN (2002) interpreted the Meliata Ocean as an initial back-arc basin gradually acquiring the typical ocean-floor characteristics during advanced stages of spreading.

Based on the interpretation of the sedimentary record, the Jurassic – Lower Cretaceous rifting process occurred in several distinct stages affecting different domains differently. The oldest, earliest Liassic Zliechov Phase seized extensive areas and developed a basin-and-swell realm with rugged topography. Rifting created wide basinal areas and

narrow intra-basinal swells, showing moderate uplift of the rift flanks. The basinal successions retained complete and mostly undisturbed pre-rift sequences, but deep erosion occurred in the North-Tatric Ridge area where rifting was probably slightly asymmetric. These features indicate the initial rifting was of the “pure shear” type, symmetric to slightly asymmetric, generated through nearly homogeneous lithospheric stretching and crustal thinning. The initial rifting phase was followed by the weaker upper Liassic Devin Phase, during which additional crustal attenuation and extensional block tilting occurred. It is noteworthy that the prominent Czorsztyn Ridge did not exist at that time yet, and the Czorsztyn domain was part of a wide basinal area including the neighbouring Kysuca and Magura Basins.

The Middle Jurassic Krasín Phase rifting took place in a more restricted area around the future break-up zone of the Penninic-Vahic Ocean. Asymmetric rifting mode is indicated by contrasting subsidence histories of the margins of the rift zone. The lower, Slovakocarpian plate margin acquired a narrow rift shoulder and the break-away system of half-grabens was filled with thick aprons of scarp breccias, while the distal, broad upper-plate margin (Czorsztyn Ridge) was uplifted. The late Bajocian – early Bathonian break-up is widely recorded by a partly subaerial unconformity followed by a pronounced thermal subsidence stage during the Late Jurassic.

Interestingly enough, the Czorsztyn Succession records a second, distinct uplift event during the Early Cretaceous, the Walentowa Phase. It is interpreted here as a consequence of another phase of asymmetric lithospheric rifting, which ultimately led to opening of the Magura Ocean on the other side of the Czorsztyn Ridge (Fig. 5). The ridge retained its upper plate position, therefore it experienced the syn-rift thermal uplift again. The reconstruction of the overall rift geometry closely resembles the model of a passive margin affected by several extensional detachment systems, developed by LISTER et al. (1986). Following their terminology, the Czorsztyn Ridge may be considered as a marginal plateau or ribbon continent (see Fig. 4 in LISTER et al., 1986).

### 5.2 Correlation with the Alps

A succession of rifting events comparable to that described above was reconstructed for large areas on the European, Austroalpine and South Alpine shelves of the Alpine Tethys (e. g. LEMOINE et al., 1986; BERNOULLI et al., 1993; FROITZHEIM and MANATSCHAL, 1996; CLAUDEL and DUMONT, 1999). The Liassic symmetrical rifting was succeeded by the Middle Jurassic simple shear extension and break-up of the Ligurian-Piemont Ocean, which produced also a thermal uplift of the broad, upper plate Briançonnais rift shoulder. Finally, the separation of the Briançonnais ribbon continent from the European margin and the break-up of the Valais Ocean occurred probably in the Early Cretaceous (FRISCH, 1979; FLORINETH and FROITZHEIM, 1994; STAMPFLI, 1994). Opening of both, the South and North Penninic oceanic branches was ascribed to the eastward propagation of the Central Atlantic and the North Atlantic – Bay of Biscay rift systems, respectively (FRISCH, 1981; LEMOINE et al., 1987; STAMPFLI, 1994, 1996).

It is now well established in the Alps that opening of the South Penninic oceanic zone was initiated by asymmetric

← Fig. 5  
Paleotectonic interpretation of Jurassic – Early Cretaceous rifting processes that separated the Slovakocarpian realm from the North European Platform by opening of the South Penninic (Vahic) and North Penninic (Magura) oceans with the Oravic continental ribbon in an intermediate position.



passive rifting and subcontinental mantle exhumation, followed by diffuse slow spreading. This model is based upon evidence from the composition of the oceanic bottom ophiolites (LEMOINE et al., 1987; TROMMSDORFF et al., 1993; MARRONI et al., 1998) and the geometry and kinematics of the rift-related extensional fault structures (FROITZHEIM and EBERLI, 1990; BERNOULLI et al., 1993; FROITZHEIM and MANAT-SCHAL, 1996). Though not directly supported by proofs, an analogous model is adopted for the Western Carpathians, since certain features in the sedimentation and subsidence/uplift patterns of the proximal (Lower Austroalpine-Infratatic) and distal (Middle Penninic-Oravic) margins of the asymmetric South Penninic-Vahic oceanic rift seem to correlate well.

### 5.3 Geodynamic background of rifting

As indicated by the synoptic evolutionary scheme (Fig. 3), the above discerned Jurassic – Cretaceous rifting events occurred within the lower plate of the Western Carpathian convergence orogenic system. The absence of rift-related

volcanism and the persistence of an extensional tectonic regime for many tens of Ma indicate a passive rifting mode generated by tensile deviatoric stresses within the European lithosphere. Adopting the Alpine model to the Western Carpathians, an eastward lateral propagation of the Alpine Tethys rift, i. e. sequential opening of the South Penninic Ligurian, Piemont and Vahic oceanic basins, would be expected. However, as it has already been pointed out by DUMONT et al. (1996), that no such rift propagation can be reconstructed and rifting, punctuated by the late Bajocian – early Bathonian break-up, was more-or-less coeval in all these basins. Therefore, an alternative model is suggested below.

The continental fragments in the Alpine-Carpathian realm (including Getic-Bucovinian, Tisia, Slovakocarpathian, Austroalpine and Pelso consisting of Transdanubian and Bükk terranes) are usually considered as a NE-trending spur of the Adriatic microplate during the Jurassic (e. g. STAMPFLI et al., 1998 – their reconstruction is partially adopted in Fig. 6 of this work). From the SE, this spur faced the Neotethys-related Meliata-Vardar oceanic realm bordered by active

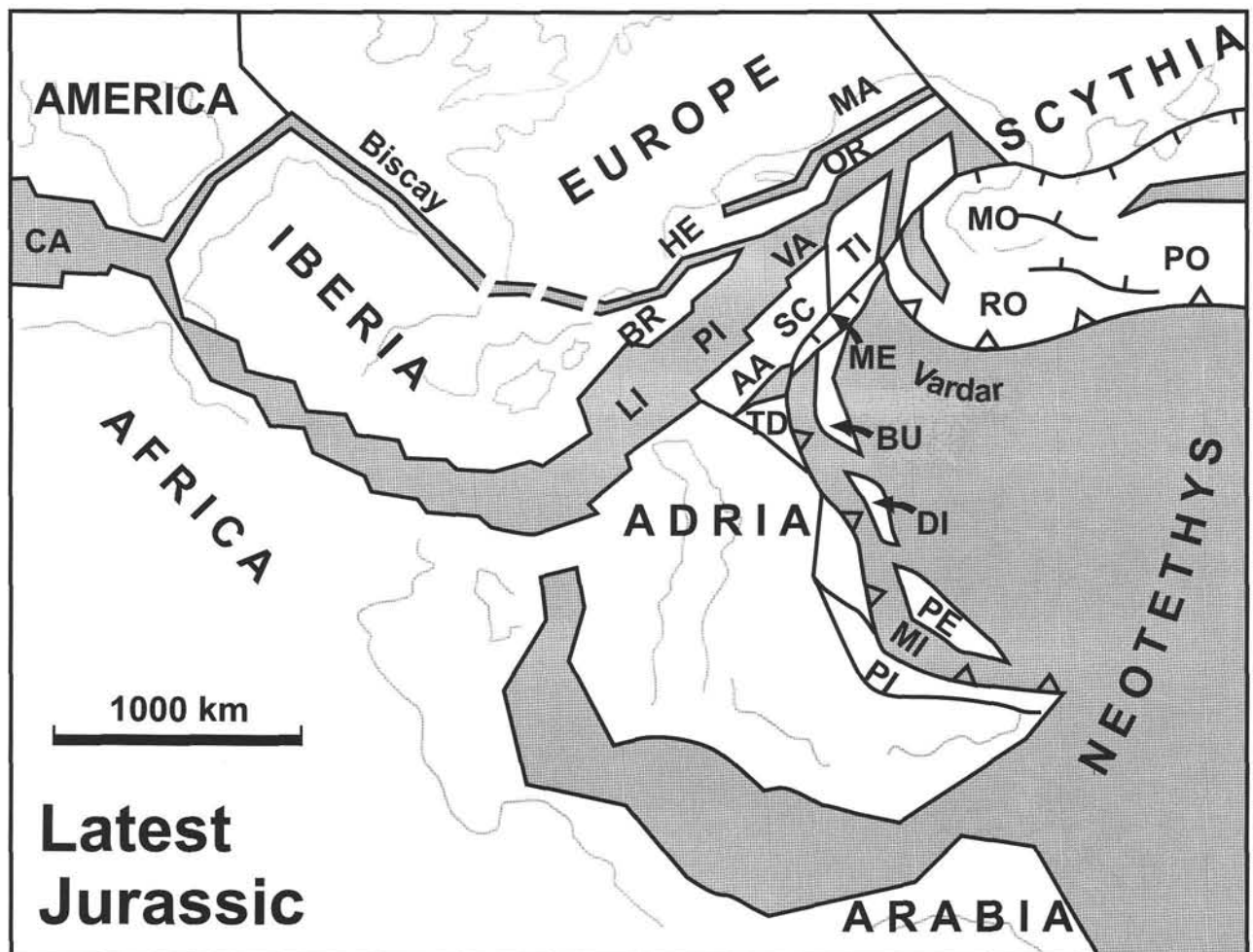


Fig. 6

A possible arrangement of oceanic (grey) and continental (white) domains in the western Tethyan realm during the latest Jurassic. Plate configuration, present shorelines and orogenic fronts (grey lines) are drawn after STAMPFLI et al. (1998). Strongly modified in the Carpathian area to outline the relationship between the extensional and compressional areas. Solid lines with teeth denote subduction zones, those with ticks indicate suture zones. CA – Central Atlantic, BR – Briançonnais, HE – Helvetic, MA – Magura, OR – Oravic, LI – Ligurian, PI – Piemont, VA – Vahic, AA – Austroalpine, SC – Slovakocarpathian, TI – Tisia, TD – Transdanubian, ME – Meliatic suture, BU – Bükk, DI – Drina-Ivanjica, PE – Pelagonian, MI – Mirdita, PO – Pindos-Budva, MO – Moesia, RO – Rhodope, PO – Pontides.

margins. After closure of the Meliata Ocean, collision between the Europe-related passive margin and the Adria-related drifting fragments occurred in the Alpine-Carpathian sector. This suggests that in its eastern sector, Penninic rifting took place in the foreland of the advancing collision front (see also Fig. 3) and that the Austroalpine-Slovakocarpathian continental blocks had a weak, if any, connection with Adria (Fig. 6). Consequently, it appears to be questionable whether the Penninic rifting might have solely been triggered by the eastward drift of Adria and Africa relative to Europe.

In the new model it is assumed that rifting-related horizontal tensile stresses, operating within the lower plate of the convergence system, were generated by the subduction slab pull force of the Meliata oceanic lithosphere (Fig. 7). Although the present geodynamic models assume that slab pull forces to be largely subtracted by resistive forces within the mantle and the collision zone, at certain circumstances it possibly could have been effectively transmitted towards the lower plate of the convergence system to produce significant horizontal deviatoric tension. After commencement of the continental collision, the subcrustal mantle subduction might continue (see e. g. model by BEAUMONT et al., 1996) and the driving slab pull force might prolong to generate lower plate extension in the foreland of the collision zone. This idea is outlined in Fig. 7 for the earliest Cretaceous time, when the Meliata Ocean was already closed in the Carpathian area and the southern zones were already undergoing collisional shortening, but rifting and lithospheric stretching still operated in the foreland of the convergence system.

## 6. Conclusions

In the Western Carpathians, the Late Jurassic – Tertiary orogenic contraction influenced areas that were affected by earlier lithospheric stretching, crustal rifting

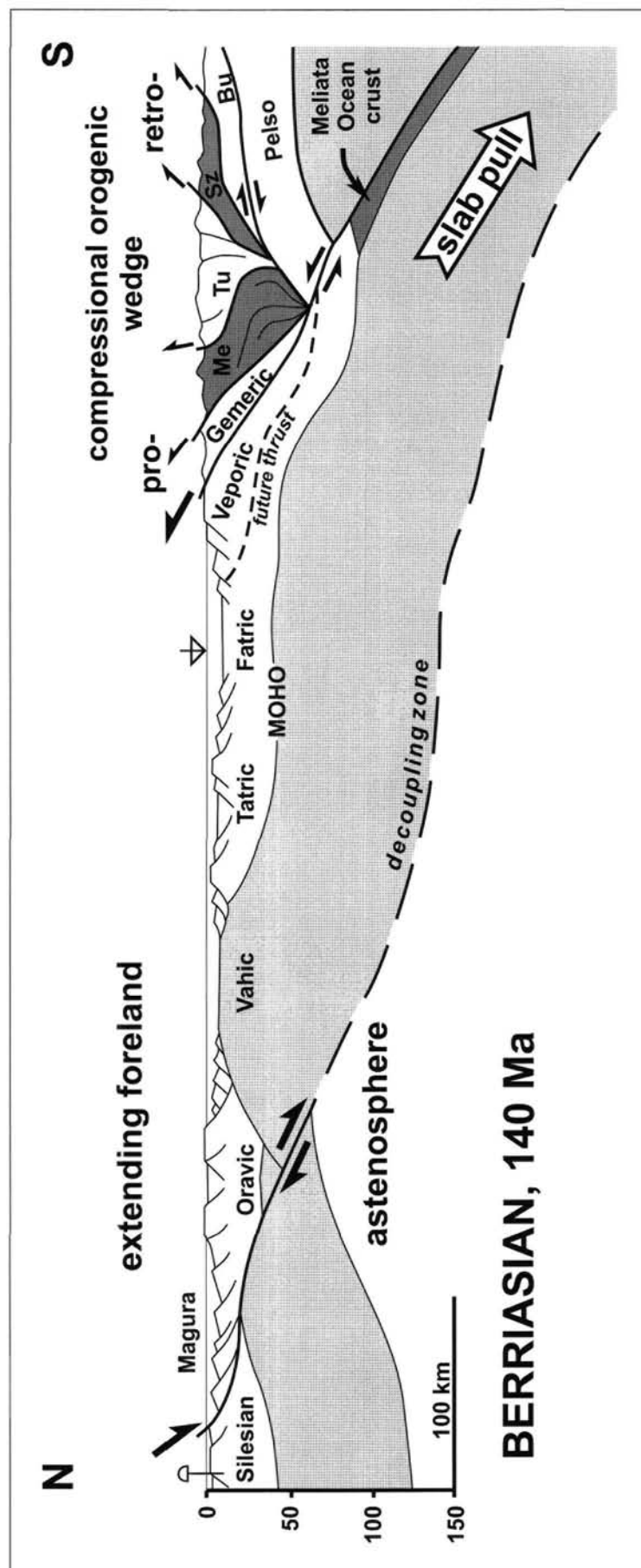


Fig. 7

Geodynamic interpretation of the Western Carpathian area at the beginning of the Cretaceous. The negative buoyancy of the subducting Meliata ocean lithosphere is considered to be the main driving force for both the upper plate shortening and orogenic wedge growth, as well as for the extension and oceanic rifting of the lower plate attached to the sinking slab. Arrangement of the collision zone was inspired by the model of BEAUMONT et al. (1996). Me – Meliatic accretionary complex, Tu – Turnaic units, Sz – obducted ophiolites of the Szarvaskő unit, Bu – Bükk "paraautochthon".

and eventually by oceanic break-up and subsequent spreading in some zones. Poor outcrop conditions and widespread tectonic inversion do not allow to directly study the rift-related structures and therefore the pre-contraction rifting processes have been reconstructed through analysis and interpretation of the sedimentary record. This analysis reveals a long-term extensional regime escalating into several distinct rift phases during the Mesozoic. The first phase led to opening of the Meliata Ocean during the Middle Triassic, most probably by an active rifting process in a back-arc tectonic setting. The Jurassic – Lower Cretaceous rifting phases were contemporaneous with compressional deformation within the orogenic wedge prograding from the hinterland to the foreland lower plate. It has been suggested that both, foreland extension and hinterland contraction, occurred in a linked geodynamic system driven by the subduction pull force exerted by the sinking oceanic Meliata slab. Two subsequent non-volcanic rifting modes have also been recognized – the initial symmetric “pure shear” extension was followed by two localized asymmetric “simple shear” rifting phases that ultimately resulted in the break-up of continental lithosphere and the spreading of the Penninic oceanic domains.

## 7. Acknowledgements

The author is indebted to J. WIECZOREK, Kraków and one anonymous reviewer for valuable comments and suggestions that helped improving of the manuscript. B. KRONOME is thanked for the graphical design of figures and P. TROPPER for the thorough editorial work. The paper contributes to the project VEGA 1137. Financial support from the Grant Agency for Science, Slovakia, is gratefully acknowledged.

## References

- ANDRUSOV, D., 1968: Grundriss der Tektonik der nördlichen Karpaten. Verlag Slov. Akad. Wissensch., Bratislava, 188 p.
- ANDRUSOV, D., BYSTRICKÝ, J. & FUSÁN, O., 1973: Outline of the structure of the West Carpathians. Guide book, X Congress CBGA, GÚDŠ, Bratislava, 44 p.
- AUBRECHT, R., 1994: Hauterivian turbidites in the Kysuca Unit (Pieniny Klippen Belt, West Carpathians). – *Mineralia Slov.*, **26**, 250-254.
- AUBRECHT, R. & OŽVOLDOVÁ, L., 1994: Middle Jurassic-Lower Cretaceous development of the Pruské Unit in the western part of the Pieniny Klippen Belt. – *Geol. Carpath.*, **45**, 211-223.
- AUBRECHT, R. & TÚNYI, I., 2001: Original orientation of neptunian dykes in the Pieniny Klippen Belt (Western Carpathians): the first results. – *Contr. Geophys. Geodesy*, **31**, 557-578.
- AUBRECHT, R., MIŠÍK, M. & SÝKORA, M., 1997: Jurassic synrift sedimentation on the Czorsztyn Swell of the Pieniny Klippen Belt in western Slovakia. – In: D. PLAŠIENKA, J. HÓK, J. VOZÁR & M. ELEČKO (eds): Alpine evolution of the Western Carpathians and related areas. *Geol. Survey Slov. Rep.*, D. Štúr Publ., Bratislava, 53-64.
- BEAUMONT, C., ELLIS, S., HAMILTON, J. & FULLSACK, P., 1996: Mechanical model for subduction-collision tectonics of Alpine-type compressional orogens. – *Geology*, **24**, 675-678.
- BERNOULLI, D., BERTOTTI, G. & FROITZHEIM, N., 1993: Mesozoic faults and associated sediments in the Austroalpine-South Alpine passive continental margin. – *Mem. Soc. Geol. It.*, **45**, 25-38.
- BIRKENMAJER, K., 1977: Jurassic and Cretaceous lithostratigraphic units of the Pieniny Klippen Belt, Carpathians, Poland. – *Studia Geol. Pol.*, **45**, 1-159.
- BIRKENMAJER, K., 1986: Stages of structural evolution of the Pieniny Klippen Belt, Carpathians. – *Stud. Geol. Pol.*, **88**, 7-32.
- BONIN, B., 1990: From orogenic to anorogenic settings: evolution of granitoid suites after a major orogenesis. – *Geol. J.*, **25**, 261-270.
- BORZA, K. and MICHALÍK, J., 1987: On stratigraphy and lithology of Czorsztyn Limestone Formation in Central West Carpathians (Jurassic, Malm). – *Geol. Zbor. – Geol. Carpath.*, **38**, 259-284.
- BORZA, K., GAŠPARIKOVÁ, V., MICHALÍK, J. & VAŠÍEK, Z., 1980: Upper Jurassic – Lower Cretaceous sequence of the Krížna-nappe (Fatric) in the Strážovce section, Strážovské vrchy Mts. (Western Carpathians). – *Geol. Zbor. – Geol. Carpath.*, **31**, 541-562.
- BUJNOVSKÝ, A., KOCHANOVÁ, M. & PEVNÝ, J., 1979: Trlenské súvrstvie – nová litostratigrafická jednotka liasu šiprúnskej skupiny (English summary: Trlenská formation – a new formal lithostratigraphical unit of the Liassic of the Šiprún group). – *Geol. práce, Správy*, **73**, 49-60.
- CLAUDEL, M.-E. & DUMONT, T., 1999: A record of multistage continental break-up on the Briançonnais marginal plateau (Western Alps): Early and Middle-Late Jurassic rifting. – *Eclogae Geol. Helv.*, **92**, 45-61.
- CSONTOS, L., 1999: A Bükk hegység szerkezetének főbb vonási [English abstract: Structural outline of the Bükk Mts (N Hungary)]. – *Földtani Közlöny*, **129**, 611-651.
- DALLMEYER, R. D., NEUBAUER, F., HANDLER, R., FRITZ, H., MÜLLER, W., PANA, D. & PUTIŠ, M., 1996: Tectonothermal evolution of the internal Alps and Carpathians: Evidence from <sup>40</sup>Ar/<sup>39</sup>Ar mineral and whole-rock data. – *Eclogae Geol. Helv.*, **89**, 203-227.
- DEBELMAS, J. & SÂNDULESCU, M., 1987: Transformante nord-penninique et le problème des corrélations paléogéographiques entre les Alpes et les Carpathes. – *Bull. Soc. Géol. France*, **3**, 403-408.
- DECKER, K., 1990: Plate tectonics and pelagic facies: Late Jurassic to Early Cretaceous deep-sea sediments of the Ybbsitz ophiolite unit (Eastern Alps, Austria). – *Sediment. Geol.*, **67**, 85-99.
- DEWEY, J. F., PITMAN, W. C., RYAN, W. B. F. & BONNIN, J., 1973: Plate tectonics and evolution of the Alpine System. – *Geol. Soc. Am. Bull.*, **84**, 3137-3180.
- DIETRICH, V., 1970: Die Stratigraphie der Platta-Decke. Fazielle Zusammenhänge zwischen Oberpenninikum und Unterostalpin. – *Eclogae Geol. Helv.*, **63**, 631-671.
- DUMONT, T., WIECZOREK, J. & BOUILLIN, J.-P., 1996: Inverted Mesozoic rift structures in the Polish Western Carpathians (High-Tatric units). Comparison with similar features in the Western Alps. – *Eclogae Geol. Helv.*, **89**, 181-202.
- ELIÁŠ, M. & ELIÁŠOVÁ, H., 1984: Facies and palaeogeography of the Jurassic in the western part of the Outer Flysch Carpathians in Czechoslovakia. – *Sbor. Geol. Věd, Geologie*, **39**, 105-170.
- ELIÁŠ, M., MARTINEC, P., REHÁKOVÁ, D. & VAŠÍČEK, Z., 1996: Geologie a stratigrafie kurovických vápenců a tlumačovských slínovců v kurovickém lomu (svrchní jura, spodní křída, Vnější Západní Karpaty, Česká republika) [English abstract: Geology and stratigraphy of the Kurovice limestone and Tlumačov Marl Formation at the Kurovice quarry (Upper Jurassic-Lower Cretaceous, Outer Western Carpathians, Czech Republic)]. – *Věstník ČGÚ*, **71**, 259-275.
- FARYAD, S. W., 1995: Petrology and phase relations of low-grade high-pressure metasediments of the Meliata Unit, Western Carpathians, Slovakia. – *Eur. J. Mineral.*, **7**, 71-87.
- FARYAD, S. W. & HENJES-KUNST, F., 1997: Petrological and K-Ar and <sup>40</sup>Ar-<sup>39</sup>Ar age constraints for the tectonothermal evolution of the high-pressure Meliata unit, Western Carpathians (Slovakia). – *Tectonophysics*, **280**, 141-156.
- FRISCH, W., 1979: Tectonic progradation and plate tectonic evolution of the Alps. – *Tectonophysics*, **60**, 121-139.
- FRISCH, W., 1981: Plate motions in the Alpine region and their correlation to the opening of the Atlantic ocean. – *Geol. Rundschau*, **70**, 402-411.

- FLORINETH, D. & FROITZHEIM, N., 1994: Transition from continental to oceanic basement in the Tasna nappe (Engadine window, Graubünden, Switzerland): evidence for Early Cretaceous opening of the Valais ocean. – Schweiz. Mineral. Petrogr. Mitt., **74**, 437-448.
- FROITZHEIM, N. & EBERLI, G.P., 1990: Extensional detachment faulting in the evolution of a Tethys passive continental margin, Eastern Alps, Switzerland. – Geol. Soc. Am. Bull., **102**, 1297-1308.
- FROITZHEIM, N. & MANATSCHAL, G., 1996: Kinematics of Jurassic rifting, mantle exhumation, and passive-margin formation in the Austroalpine and Penninic nappes (eastern Switzerland). – Geol. Soc. Am. Bull., **108**, 1120-1133.
- GAWLICK, H.-J., KRYSSTYN, L., LEIN, R. & MANDL, G. W., 1999: Tectonostratigraphic concept for the Juvavic Domain. – Tübinger Geowiss. Arb., **A**, **52**, 95-104.
- HAAS, J., KOVÁCS, S., KRYSSTYN, L. & LEIN, R., 1995: Significance of Late Permian – Triassic facies zones in terrane reconstructions in the Alpine-North Pannonian domain. – Tectonophysics, **242**, 19-40.
- HÄUSLER, H., 1988: Unterostalpine Jurabreccien in Österreich. Versuch einer sedimentologischen und paläogeographischen Analyse nachtriadischer Breccienserien im unterostalpinen Rahmen des Tauernfensters (Salzburg – Tirol). – Jb. Geol. B.-A., **131**, 21-125.
- HÄUSLER, H., PLAŠIENKA, D. & POLÁK, M., 1993: Comparison of Mesozoic successions of the Central Eastern Alps and the Central Western Carpathians. – Jb. Geol. B.-A., **136**, 715-739.
- HÓK, J., KOVÁČ, P. & RAKÚS, M., 1995: Výsledky štruktúrneho výskumu Vnútroňých Karpát a ich interpretácia (English summary: Structural investigations of the Inner Carpathians – results and interpretation). – Mineralia Slov., **27**, 231-235.
- IVAN, P., 2002: Relics of the Meliata Ocean crust: geodynamic implications of mineralogical, petrological and geochemical proxies. – Geol. Carpath., **53**, 245-256.
- IVAN, P. & KRONOME, B., 1996: Protolith and geodynamic setting of the HP/LT metamorphosed basics from the northern margin of the Bôrka nappe (Meliatic Unit, Inner Western Carpathians). – Slovak Geol. Mag., **3-4/96**, 331-334.
- JABLONSKÝ, J., MICHALÍK, J., PLAŠIENKA, D. & SOTÁK, J., 1993: Sedimentary environments of the Solirov Formation and correlation with Lower Cretaceous turbidites in Central West Carpathians, Slovakia. – Cretaceous Res., **14**, 613-621.
- JUREWICZ, E., 1997: The contact between the Pieniny Klippen Belt and Magura Unit (the Male Pieniny Mts.). – Geol. Quart., **41**, 315-326.
- KELTS, K., 1981: A comparison of some aspects of sedimentation and translational tectonics from the Gulf of California and the Mesozoic Tethys, Northern Penninic Margin. – Eclogae Geol. Helv., **74**, 317-338.
- KOTOV, A. B., MIKO, O., PUTIŠ, M., KORIKOVSKY, S. P., BEREZNYA, N. G., KRÁČ, J. & KRIST, E., 1996: U/Pb dating of zircons of postorogenic acid metavolcanics and metasubvolcanics: a record of Permian – Triassic taphrogeny of the West-Carpathian basement. – Geol. Carpath., **47**, 73-79.
- KOŠA, E., 1998: Lithostratigraphy and depositional environment of Lower – Middle Jurassic crinoidal limestone formations of the Vysoká Nappe Unit (Malé Karpaty Mts., Western Carpathians). – Geol. Carpath., **49**, 329-339.
- KOVÁCS, S., 1992: Tethys "western ends" during the Late Paleozoic and Triassic and their possible genetic relationships. – Acta Geol. Hung., **35**, 329-369.
- KOVÁCS, S., HAAS, J., CSÁZSÁR, G., SZEDERKÉNYI, T., BUDA, G. & NAGYMAROSY, A., 2000: Tectonostratigraphic terranes in the pre-Neogene basement of the Hungarian part of the Pannonian area. – Acta Geol. Hung., **43**, 225-328.
- KOVÁČ, P. & HÓK, J., 1996: Tertiary development of the western part of Klippen Belt. – Slovak Geol. Mag., **2/96**, 137-149.
- KOZUR, H., 1991: The evolution of the Meliata-Hallstatt ocean and its significance for the early evolution of the Eastern Alps and Western Carpathians. – Palaeogeogr., Palaeoclimatol., Palaeoecol., **87**, 109-135.
- KOZUR, H. & MOCK, R., 1997: New paleogeographic and tectonic interpretations in the Slovakian Carpathians and their implications for correlations with the Eastern Alps. Part II: Inner Western Carpathians. – Mineralia Slov., **29**, 164-209.
- KOZUR, H. & MOSTLER, H., 1992: Erster paläontologischer Nachweis von Meliaticum und Süd-Rudabányaicum in den Nördlichen Kalkalpen (Österreich) und ihre Beziehungen zu den Abfolgen in den Westkarpaten. – Geol. Paläont. Mitt. Innsbruck, **18**, 87-129.
- KRÁČ, J., HESS, J. C., KOBER, B. & LIPPOLT, H. J., 1997:  $^{207}\text{Pb}/^{206}\text{Pb}$  and  $^{40}\text{Ar}/^{39}\text{Ar}$  age data from plutonic rocks of the Strážovské vrchy Mts. basement, Western Carpathians. – In: P. GRECUŁA, D. HOVORKA & M. PUTIŠ (eds): Geological evolution of the Western Carpathians. Mineralia Slov., Monogr., Bratislava, 253-260.
- KROBICKY, M. & SŁOMKA, T., 1999: Berriasian submarine mass movements as results of tectonic activity in the Carpathian basins. – Geol. Carpath., **50**, spec. issue, 42-44.
- KULLMANOVÁ, A. & GAŠPARIKOVÁ, V., 1982: Vrchnokriedové sedimenty v severnej časti pohoria Považský Inovec (German summary: Oberkretazische Sedimente im nördlichen Teil des Považský Inovec – Gebirge). – Geol. Práce, Spr., **78**, 85-95.
- LEFELD, J., 1988: Urgonian formations in the Carpathians. – In: M. RAKÚS, J. DERCOURT & A. E. M. NAIRN (eds): Evolution of the northern margin of Tethys, Vol. I. Mém. Soc. Géol. France, Paris, Nouv. Sér. **154**, 141-145.
- LEMOINE, M. & TRÚMPY, R., 1987: Pre-oceanic rifting in the Alps. – Tectonophysics, **133**, 305-320.
- LEMOINE, M., BAS, T., ARNAUD-VANNEAN, A., ARNAUD, H., DUMONT, T., GIDON, M., BOURBON, M., DE GRACIANSKY, P.-C., RUDKIEWICZ, J.-L., MEGARD-GALLI, J. & TRICART, P., 1986: The continental margin of the Mesozoic Tethys in the Western Alps. – Marine Petrol. Geol., **3**, 179-199.
- LEMOINE, M., TRICART, P. & BOILLLOT, G., 1987: Ultramafic and gabbroic ocean floor of the Ligurian Tethys (Alps, Corsica, Apennines): In search of a genetic model. – Geology, **15**, 622-625.
- LESS, G., 2000: Polyphase evolution of the structure of the Aggtelek-Rudabánya mountains (NE Hungary), the southernmost element of the Inner Western Carpathians – a review. – Slovak Geol. Mag., **6**, 260-268.
- LISTER, G. S., ETHERIDGE, M. A. & SYMONDS, P. A., 1986: Detachment faulting and the evolution of passive continental margins. – Geology, **14**, 246-250.
- LUCIŃSKA-ANCZKIEWICZ, A., VILLA, I. M., ANCKIEWICZ, R. & ŚLĄCZKA, A., 2002:  $^{40}\text{Ar}/^{39}\text{Ar}$  dating of alkaline lamprophyres from the Polish Western Carpathians. – Geol. Carpath., **53**, 45-52.
- MALATA, E., 2000: Foraminiferal assemblages of the Magura nappe (Polish Outer Carpathians) and their paleobathymetrical implications. – Slovak Geol. Mag., **6**, 172-174.
- MAHEL, M., 1979: Choč and Strážov nappes, new division and structure. – Geol. Zbor. – Geol. Carpath., **30**, 19-43.
- MAHEL, M., 1981: Island character of Klippen Belt; Vahicum – continuation of Southern Penninicum in West Carpathians. – Geol. Zbor. – Geol. Carpath., **32**, 293-305.
- MALUSKI, H., RAJLICH, P. & MATTE, PH., 1993:  $^{40}\text{Ar}$ - $^{39}\text{Ar}$  dating of the Inner Carpathian Variscan Basement and Alpine mylonitic overprinting. – Tectonophysics, **223**, 313-337.
- MANDL, G. W., 2000: The Alpine sector of the Tethyan shelf – Examples of Triassic to Jurassic sedimentation and deformation from the Northern Calcareous Alps. – Mitt. Österr. Geol. Ges., **92** (1999), 61-77.

- MANDL, G. W. & ONDREJČKOVÁ, A., 1991: Über eine triadische Tiefwasser Fazies (Radiolarite, Tonschiefer) in den Nördlichen Kalkalpen – ein Vorbericht. – *Jb. Geol. B.-A.*, **134**, 309-318.
- MARRONI, M., MOLLI, G., MONTANINI, A. & TRIBUZIO, R., 1998: The association of continental crust rocks with ophiolites in the Northern Apennines (Italy): implications for the continent-ocean transition in the Western Tethys. – *Tectonophysics*, **292**, 43-66.
- MASARYK, P., LINTNEROVÁ, O. & MICHALÍK, J., 1993: Sedimentology, lithofacies and diagenesis of the sediments of the Reifling intra-platform basins in the Central Western Carpathians. – *Geol. Carpath.*, **44**, 233-249.
- MCKENZIE, D., 1978: Some remarks on the development of sedimentary basins. – *Earth Planet. Sci. Lett.*, **40**, 25-32.
- MELLO, J. & MOCK, R., 1977: Nové poznatky o triase čs. časti Rudabanského pohoria (English summary: New data on the Triassic from Czechoslovak part of the Rudabánya Mts.). – *Geol. Práce, Správy*, **68**, 7-20.
- MELLO, J., REICHWALDER, P. & VOZÁROVÁ, A., 1998: Bôrka nappe: high-pressure relic from the subduction-accretion prism of the Meliata ocean (Inner Western Carpathians, Slovakia). – *Slovak Geol. Mag.*, **4**, 261-273.
- MICHALÍK, J. & KOVÁČ, M., 1982: On some problems of palinspastic reconstructions and Meso-Cenozoic paleogeographical development of the Western Carpathians. – *Geol. Zbor. – Geol. Carpath.*, **33**, 481-507.
- MICHALÍK, J. & SOTÁK, J., 1990: Lower Cretaceous shallow marine buildups in the Western Carpathians and their relationship to pelagic facies. – *Cretaceous Res.*, **11**, 211-227.
- MICHALÍK, J. & VAŠIČEK, Z., 1984: To the early mid Cretaceous West Carpathian development: the age and environmental position of the „Skalica breccia“. – *Geo. Zbor. – Geol. Carpath.*, **35**, 559-581.
- MICHALÍK, J. & VAŠIČEK, Z., 1987: Geológia a stratigrafia okolia ložiska spodnokriedových vápencov Butkov (manínska jednotka, stredné Považie) [Geology and stratigraphy of the Butkov Lower Cretaceous limestone deposits, Manín Unit, Middle Váh Valley (Western Slovakia)]. – *Mineralia Slov.*, **19**, 115-134.
- MICHALÍK, J., MASARYK, P., LINTNEROVÁ, O., SOTÁK, J., JENDREJÁKOVÁ, O., PAPŠOVÁ, J. & BUČEK, S., 1993a: Facies, paleogeography and diagenetic evolution of the Ladinian/Carnian Veterlín reef complex, Malé Karpaty Mts (Western Carpathians). – *Geol. Carpath.*, **44**, 17-34.
- MICHALÍK, J., REHÁKOVÁ, D. & ŽIT, J., 1993b: Upper Jurassic and Lower Cretaceous facies, microplankton and crinoids in the Kuchyňa unit, Malé Karpaty Mts. – *Geol. Carpath.*, **44**, 161-176.
- MICHALÍK, J., REHÁKOVÁ, D. & SOTÁK, J., 1994: Environments and setting of the Jurassic/Lower Cretaceous Succession in the Tatric area, Malé Karpaty Mts. – *Geol. Carpath.*, **45**, 45-56.
- MICHALÍK, J., REHÁKOVÁ, D. & JABLONSKÝ, J., 1996: Geodynamic setting of fluxoturbidites in West Carpathian Upper Jurassic and Lower Cretaceous sedimentary basins. – *Slovak Geol. Mag.*, **3-4/96**, 325-329.
- MIŠÍK, M., 1979: Sedimentologické a mikrofaciálne štúdium jury bradla vršateckého hradu (neptunické dajky, biohermný vývoj oxfordu) [English summary: Sedimentological and microfacial study in the Jurassic of the Vršatec (castle) klippe (neptunic dykes, Oxfordian bioherm facies)]. – *Záp. Karpaty, Geológia*, **5**, 7-56.
- MIŠÍK, M., 1994: The Czorsztyn submarine ridge (Jurassic-Lower Cretaceous, Pieniny Klippen Belt): An example of a pelagic swell. – *Mitt. Österr. Geol. Ges.*, **86** (1993), 133-140.
- MIŠÍK, M. & MARSCHALKO, R., 1988: Exotic conglomerates in flysch sequences: Examples from the West Carpathians. – In: M. RAKÚS, J. DERCOURT & A. E. M. NAIRN (eds): *Evolution of the northern margin of Tethys*, Vol. I. *Mém. Soc. Géol. France, Nouvelle Série No.* **154**, 95-113.
- MIŠÍK, M., SÝKORA, M. & AUBRECHT, R., 1994a: Middle Jurassic scarp breccias with clefts filled by Oxfordian and Valanginian-Hauterivian sediments, Krasín near Dolná Súča (Pieniny Klippen Belt, Slovakia). – *Geol. Carpath.*, **45**, 343-356.
- MIŠÍK, M., SÝKORA, M., OŽVOLDOVÁ, L. & AUBRECHT, R., 1994b: Horná Lysá (Vršatec) – a new variety of the Kysuca Succession in the Pieniny Klippen Belt. – *Mineralia Slov.*, **26**, 7-19.
- MOCK, R., SÝKORA, M., AUBRECHT, R., OŽVOLDOVÁ, L., KRONOME, B., REICHWALDER, P. & JABLONSKÝ, J., 1998: Petrology and stratigraphy of the Meliaticum near the Meliata and Jaklovce Villages, Slovakia. – *Slovak Geol. Mag.*, **4**, 223-260.
- NEUBAUER, F., GENSER, J. & HANDLER, R., 2000: The Eastern Alps: Result of a two-stage collision process. – *Mitt. Österr. Geol. Ges.*, **92** (1999), 117-134.
- OSZCZYPKO, N., 1992: Late Cretaceous through Paleogene evolution of Magura basin. – *Geol. Carpath.*, **43**, 333-338.
- PÉRÓ, CS., KOVÁCS, S., LESS, GY. & FODOR, L., 2002: Tectonic setting of the Triassic „Hallstatt“ (s.l.) facies in NE Hungary. – *Geol. Carpath.*, **53**, spec. issue, 24-25.
- PLAŠIENKA, D., 1987: Litologicko-sedimentologický a paleotektonický charakter borinskej jednotky v Malých Karpatoch (English summary: Lithological, sedimentological and paleotectonic pattern of the Borinka Unit in the Little Carpathians). – *Mineralia Slov.*, **19**, 217-230.
- PLAŠIENKA, D., 1995a: Mesozoic evolution of Tatric units in the Malé Karpaty and Považský Inovec Mts.: Implications for the position of the Klappe and related units in western Slovakia. – *Geol. Carpath.*, **46**, 101-112.
- PLAŠIENKA, D., 1995b: Passive and active margin history of the northern Tatricum (Western Carpathians, Slovakia). – *Geol. Rundschau*, **84**, 748-760.
- PLAŠIENKA, D., 1998: Paleotectonic evolution of the Central Western Carpathians during the Jurassic and Cretaceous. – In: M. RAKÚS (ed.): *Geodynamic development of the Western Carpathians*. *Geol. Surv. Slov. Rep.*, D. Štúr Publ., Bratislava, 107-130.
- PLAŠIENKA, D., 1999: Tektonochronológia a paleotektonický model jursko-kriedového vývoja centrálnych Západných Karpát (English summary: Tectonochronology and paleotectonic evolution of the Central Western Carpathians during the Jurassic and Cretaceous). *Veda, Bratislava*, 127 p.
- PLAŠIENKA, D., 2003: Development of basement-involved fold and thrust structures exemplified by the Tatric-Fatric-Veporic nappe system of the Western Carpathians. – *Geodynamica Acta*, **16**, 21-38.
- PLAŠIENKA, D., MICHALÍK, J., KOVÁČ, M., GROSS, P. & PUTIŠ, M., 1991: Paleotectonic evolution of the Malé Karpaty Mts. – an overview. – *Geol. Carpath.*, **42**, 195-208.
- PLAŠIENKA, D., MARSCHALKO, R., SOTÁK, J., UHER, P. & PETERČÁKOVÁ, M., 1994: Pôvod a štruktúrne postavenie vrchnokriedových sedimentov v severnej časti Považského Inovca. Prvá časť: Litostratigrafia a sedimentológia (English summary: Origin and structural position of Upper Cretaceous sediments in the northern part of the Považský Inovec Mts. Part 1: Lithostratigraphy and sedimentology). – *Mineralia Slov.*, **26**, 311-334.
- POLÁK, M., HAVRILA, M., FILO, I. & PEVNÝ, J., 1996: Gader limestones – a new lithostratigraphic unit of the Hronicum in the Vel'ká Fatra Mts. and its extension in the Western Carpathians. – *Slovak Geol. Mag.*, **3-4/96**, 293-310.
- POLÁK, M., ONDREJČKOVÁ, A. & WIECZOREK, J., 1998: Lithobiostatigraphy of the Ždiar Formation of the Krížna nappe (Tatry Mts.). – *Slovak Geol. Mag.*, **4**, 35-52.
- POLLER, U., UHER, P., BROSKA, I., PLAŠIENKA, D. & JANÁK, M., 2002: First Permian – Early Triassic zircon ages for tin-bearing granites from the Gemeric unit (Western Carpathians, Slovakia): connection to the post-collisional extension of the Variscan orogen and S-type granite magmatism. – *Terra Nova*, **14**, 41-48.



- POPRAWA, P., MALATA, T., OSZCZYPKO, N., SŁOMKA, T. & GOLONKA, J., 2002: Subsidence versus deposition – quantitative analysis for the Polish Outer Carpathian basins. – *Geol. Carpath.*, **53**, spec. issue on CD – Proc. XVII. Congress CBGA.
- PUTIŠ, M., KOTOV, A. B., UHER, P., SALNIKOVA, E. B. & KORIKOVSKY, S. P., 2000: Triassic age of the Hrončok pre-orogenic A-type granite related to continental rifting: a new result of U-Pb isotope dating (Western Carpathians). – *Geol. Carpath.*, **51**, 59-66.
- RAKÚS, M., 1977: Doplnky k litostratigrafii a paleogeografii jury a kriedy manínskej série na strednom Považí (Supplements to the Jurassic and Cretaceous lithostratigraphy and paleogeography of the Manín series in the middle Váh valley). – *Geol. Práce, Správy*, **68**, 21-38.
- RAKÚS, M., 1996: Jurassic of the innermost Western Carpathian zones – its importance and influence on the geodynamic evolution of the area. – *Slovak Geol. Mag.*, **3-4/96**, 311-317.
- RAKÚS, M. & OŽVOLDOVÁ, L., 1999: On the age of radiolarites from the Manín Unit (Butkov Klippe, Middle Váh valley, Western Carpathians). – *Mineralia Slov.*, **31**, 79-86.
- RAKÚS, M. & the IGCP 198 National Working Groups, 1989: Stratigraphic sections. – In: M. RAKÚS, J. DERCOURT and A. E. M. NAIRN (eds): *Evolution of the northern margin of Tethys*, Vol. II. *Mém. Soc. Géol. France, Paris, Nouv. Sér.* **154 (II)**, 133-214.
- RAKÚS, M., MIŠÍK, M., MICHALÍK, J., MOCK, R., ĐURKOVIČ, T., KORÁB, T., MARŠCHALKO, R., MELLO, J., POLÁK, M. & JABLONSKÝ, J., 1990: Paleogeographic development of the West Carpathians: Anisian to Oligocene. – In: M. RAKÚS, J. DERCOURT and A. E. M. NAIRN (eds): *Evolution of the northern margin of Tethys*, Vol. III, Pt. 1. *Mém. Soc. Géol. France, Nouv. Sér. No. 154 (III, pt. 1)*, 39-62.
- REHÁKOVÁ, D., ŠULGAN, F., VAŠIČEK, Z. & MICHALÍK, J., 1995: Environment, fauna and paleogeographic importance of the Berriasian limestones from the Vigantice tectonic slice in the Outer Western Carpathians. – *Geol. Carpath.*, **46**, 53-58.
- RÉTI, Z., 1985: Triassic ophiolite fragments in an evaporitic melange, northern Hungary. – *Ophioliti*, **10**, 411-422.
- RING, U. & RICHTER, C., 1994: The Variscan structural and metamorphic evolution of the eastern Southalpine basement. – *J. Geol. Soc. London*, **151**, 755-766.
- SCHNABEL, W., 1992: New data on the Flysch zone of the Eastern Alps in the Austrian sector and new aspects concerning the transition to the Flysch Zone of the Carpathians. – *Cretaceous Res.*, **13**, 405-419.
- SCHWEIGL, J. & NEUBAUER, F., 1997: Structural development of the central Northern Calcareous Alps: Significance for the Jurassic to Tertiary geodynamics in the Alps. – *Eclogae Geol. Helv.*, **60**, 303-323.
- SOTÁK, J., 1990: Prínos výskumu mezozoika vo flyšových zónach externíd k mikrofáciám, paleogeografii a paleotektonike Západných Karpát (English summary: Study of Mesozoic rocks in Flysch zones, and its contribution to information about microfacies paleogeography and paleotectonics of West Carpathians). – In: M. SÝKORA, J. JABLONSKÝ and O. SAMUEL (eds): *50 rokov výuky geológie a paleontológie na Slovensku. Sedimentologické problémy Západných Karpát* (Sedimentological problems of the Western Carpathians). *Konf. Symp. Sem., GUDŠ, Bratislava*, 45-68.
- SOTÁK, J. & PLAŠIENKA, D., 1996: Upper Triassic – Lower Jurassic sediments of the Lučatin unit in the Northern Veporicum: facial diversity and tectonic stacking. – *Slovak Geol. Mag.*, **3-4/96**, 273-277.
- SOTÁK, J., PLAŠIENKA, D., SPIŠIAK, J. & UHER, P., 1993: Neptunické dajky karbonátov v bazických vulkanitoch Považského Inovca (English summary: Neptunian carbonate dykes hosted by basic volcanic rocks in the Považský Inovec Mts.). – *Mineralia Slov.*, **25**, 193-201.
- SOTÁK, J., SPIŠIAK, J. & BIRŇ, A., 1994: Metamorphic sequences with "Bündnerschiefer" lithology in the pre-Neogene basement of the East Slovakian Basin. – *Mitt. Österr. Geol. Ges.*, **86** (1993), 111-120.
- SPIŠIAK, J. & HOVORKA, D., 1997: Petrology of the Western Carpathians Cretaceous primitive alkaline volcanics. – *Geol. Carpath.*, **48**, 113-121.
- STAMPFLI, G. M., 1994: Exotic terrains in the Alps: a solution for a single Jurassic ocean. – *Schweiz. Mineral. Petrogr. Mitt.*, **74**, 449-452.
- STAMPFLI, G. M., 1996: The Intra-Alpine terrain: A Paleotethyan remnant in the Alpine Variscides. – *Eclogae Geol. Helv.*, **89**, 13-42.
- STAMPFLI, G. M., MOSAR, J., MARQUER, D., MARCHANT, R., BAUDIN, T. & BOREL, G., 1998: Subduction and obduction processes in the Swiss Alps. – *Tectonophysics*, **296**, 159-204.
- STANISZEWSKA, A. & CIBOROWSKI, T., 2000: Dolnokredowa brekcja wapienna w autochtonicznej serii wierzhowej w Tatrach Zachodnich (English summary: Lower Cretaceous breccia from autochthonous High-Tatric succession in Western Tatra Mts., southern Poland). – *Przegląd Geol.*, **48**, 246-250.
- SZOLDÁN, SZ., 1990: Middle Triassic magmatic sequences from different tectonic settings in the Bükk Mts. NE Hungary. – *Acta Mineral. Petrogr.*, **31**, 25-42.
- ŠVÁBENICKÁ, L., BUBÍK, M., KREJČÍ, O. & STRÁNÍK, Z., 1997: Stratigraphy of Cretaceous sediments of the Magura group of nappes in Moravia (Czech Republic). – *Geol. Carpath.*, **48**, 179-191.
- TOLLMANN, A., 1977: *Geologie von Österreich. Band I: Die Zentralalpen*. Franz Deuticke, Wien, 766 S.
- TOMEK, Č., 1993: Deep crustal structure beneath the central and inner West Carpathians. – *Tectonophysics*, **226**, 417-431.
- TROMMSDORFF, V., PICCARDO, G. B. & MONTRASIO, A., 1993: From magmatism through metamorphism to sea floor emplacement at subcontinental Adria lithosphere during pre-Alpine rifting (Malenco, Italy). – *Schweiz. Mineral. Petrogr. Mitt.*, **73**, 191-203.
- TRÜMPY, R., 1988: A possible Jurassic – Cretaceous transform system in the Alps and the Carpathians. – *Geol. Soc. Am. Spec. Pap.*, **218**, 93-109.
- UHER, P. & BROSKA, I., 1996: Post-orogenic Permian volcanic rocks in the Western Carpathian-Pannonian area: geochemistry, mineralogy and evolution. – *Geol. Carpath.*, **45**, 375-378.
- UHER, P. & BROSKA, I., 2000: The role of silicic magmatism in the Western Carpathians: from Variscan collision to Early-Alpine extension. – *Slovak Geol. Mag.*, **6**, 278-280.
- UHER, P., ONDREJKA, M., SPIŠIAK, J., BROSKA, I. & PUTIŠ, M., 2002: Lower Triassic potassium-rich rhyolites of the Silicic unit, Western Carpathians, Slovakia: geochemistry, mineralogy and genetic aspects. – *Geol. Carpath.*, **53**, 27-36.
- VON RAUMER, J. F. & NEUBAUER, F., 1993: Late Precambrian and Paleozoic evolution of the Alpine basement – overview. – In: J. F. VON RAUMER and F. NEUBAUER (eds): *Pre-Mesozoic geology in the Alps*. Springer, Berlin, 625-639.
- VOZÁR, J., 1997: Rift-related volcanics in the Permian of the Western Carpathians. – In: P. GREČULA, D. HOVORKA and M. PUTIŠ (eds): *Geological evolution of the Western Carpathians. Mineralia Slov.* – Monograph, Bratislava, 225-234.
- VOZÁROVÁ, A. & VOZÁR, J., 1988: Late Paleozoic in West Carpathians. *GUDŠ, Bratislava*, 314 p.
- VOZÁROVÁ, A. & VOZÁR, J., 1992: Tornaicum and Meliaticum in borehole Brusník BRU-1, Southern Slovakia. – *Acta Geol. Hung.*, **35**, 97-116.
- WAGREICH, M., 2001: A 400-km-long piggyback basin (Upper Aptian-Lower Cenomanian) in the Eastern Alps. – *Terra Nova*, **13**, 401-406.
- WEISSERT, H. & BERNOULLI, D., 1985: A transform margin in the Mesozoic Tethys: evidence from the Swiss Alps. – *Geol. Rundsch.*, **74**, 665-679.

- WERNICKE, G., 1985: Uniform sense simple shear of continental lithosphere. – *Can. J. Earth Sci.*, **22**, 108-125.
- WIECZOREK, J., 2000: *Mesozoic evolution of the Tatra Mountains (Carpathians)*. – *Mitt. Ges. Geol. Bergbaustud. Österr.*, **44**, 241-262.
- WIECZOREK, J., 2001: Condensed horizons as turning events in passive margin evolution: the Tatra Mts. examples. – *Zbl. Geol. Paläont. Teil I*, 2000, 199-209.
- WIERZBOWSKI, A., JAWORSKA, M. & KROBICKI, M., 1999: Jurassic (Upper Bajocian – Lowest Oxfordian) ammonitico rosso facies in the Pieniny Klippen Belt, Carpathians, Poland: its fauna, age, microfacies and sedimentary environment. – *Sudia Geol. Pol.*, **115**, 7-74.
- WILDI, W., 1988: "Bündnerschiefer" and "Flysch" of the northern margin of Alpine Tethys: Turbiditic deep water clastics in extensional and compressive basins. – In: M. RAKÚS, J. DERCOURT and A. E. M. NAIRN (eds): *Evolution of the northern margin of Tethys*. *Mém. Soc. Géol. France, Nouvelle Sér. No.* **154**, 115-129.
- WINKLER, W. & ŚLĄCZKA, A., 1994: A Late Cretaceous to Paleogene geodynamic model for the Western Carpathians in Poland. – *Geol. Carpath.*, **45**, 71-82.
- WOOLER, D. A., SMITH, A. G. & WHITE, N., 1992: Measuring lithospheric stretching on Tethyan passive margins. – *J. Geol. Soc. London*, **149**, 517-532.
- Manuscript received: 24. 04. 2002 ●
- Revised version received: 28. 01. 2003 ●
- Manuscript accepted: 03. 01. 2003 ●

# ZOBODAT - [www.zobodat.at](http://www.zobodat.at)

Zoologisch-Botanische Datenbank/Zoological-Botanical Database

Digitale Literatur/Digital Literature

Zeitschrift/Journal: [Austrian Journal of Earth Sciences](#)

Jahr/Year: 2001

Band/Volume: [94](#)

Autor(en)/Author(s): Plasienka Dusan

Artikel/Article: [Dynamics of Mesozoic pre-orogenic rifting in the Western Carpathians. 79-98](#)