

| | | | | |
|------------------------|----|-------|---------------------|----------------|
| Mitt. Münch. Ent. Ges. | 99 | 17-20 | München, 01.11.2009 | ISSN 0340-4943 |
|------------------------|----|-------|---------------------|----------------|

**A new species of *Postandrosus* KULZER, 1951 and new records of
P. maculipennis KULZER, 1951 from Sarawak (Malaysia, Borneo)**
(Coleoptera: Tenebrionidae, Stenochiinae, Cnodalonini)

Roland GRIMM

Abstract

Postandrosus maculosus **sp. n.** from Borneo (Malaysia, Sarawak) is described and compared with *P. maculipennis* KULZER, 1951. Additional faunistic data for *P. maculipennis* are given.

Introduction

Two species of the genus *Postandrosus* KULZER, 1951 are presently known: the type species *P. maculipennis*, KULZER 1951 described from Sabah (Borneo), and *P. ater*, KULZER 1952 described from Peninsular Malaysia. A distinct sexual dimorphism in *P. ater* was described by GRIMM (2008), and additional faunistic data for both species were given. Newly collected material from Sarawak (Borneo) yielded an additional new species, which is described hereafter. New faunistic data of *P. maculipennis* are added.

Acronyms of depositories

CRG - Collection ROLAND GRIMM, Tübingen; SMNS - Staatliches Museum für Naturkunde, Stuttgart.

***Postandrosus maculosus* sp. n.**

(Figs 1-2, 4-6)

Holotype ♂: Borneo, Malaysia, Sarawak, Kubah NP, 250 m, 6.-8.II.2008, R. GRIMM leg. (SMNS).

Paratypes. 2 ♂ (CRG), 1 ♀ (SMNS), same data as holotype. – Borneo, Malaysia, Sarawak, Kubah NP, 250 m, 15.-18.IX.2008, 1 ♀ (CRG),.

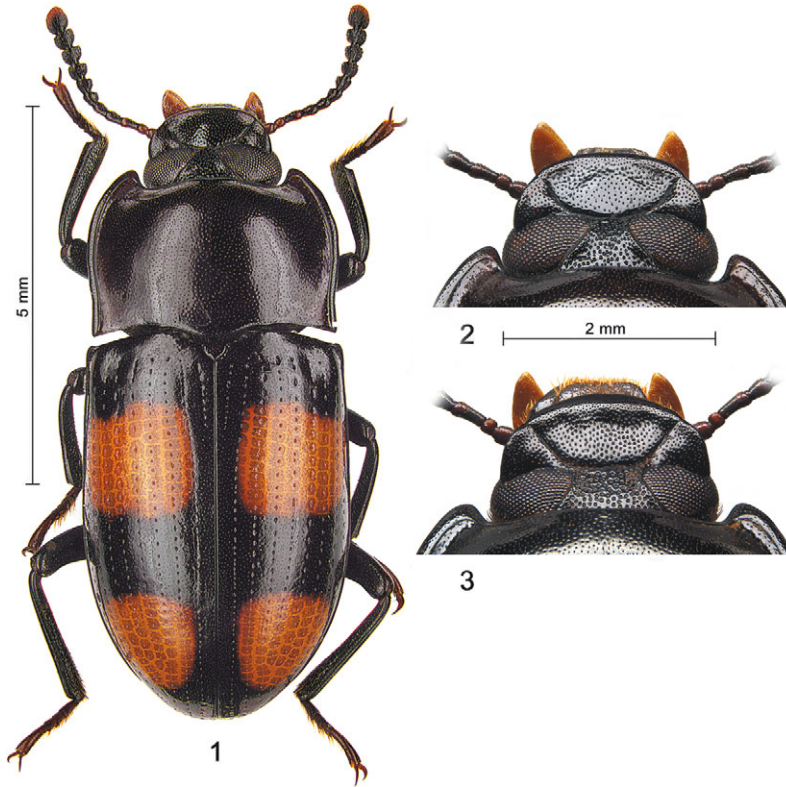
Derivatio nominis. The species name refers to the spots (maculae) on the elytra.

Description.

Black, shining, pronotum castaneous, elytra with two reddish spots; antennae, mouthparts, tarsi and underside black to reddish brown. Body length 6.8–8.2 mm; width at broadest point behind middle of elytra 3–3.5 mm.

Head large, punctuation fine and dense on clypeus, somewhat coarser on vertex and frons. Clypeus slightly convex, fronto-clypeal sulcus semicircular, distinct. Eyes large, convex, constricted by genal canthus; sulci of eyes fine, indistinct. Frons anteriorly between eyes less than half as broad as eye. Antenna with antennomere 3 slightly longer than 4, antennomeres 6–11 forming a club, antennomeres 8–10 broader than long, last antennomere short ovate. Mentum with a broad oval middlesection, and a median carina.

Pronotum widest at about middle, wider than long, width/length ratio 1.3–1.57 (measured in each case in the middle). Base broader than apex. Sides arcuate narrowed from middle to apex, slightly sinuate before posterior angles, which are prominent. Lateral borders broadly margined. Posterior border bisinuate, not margined; margin of anterior border interrupted in the middle; anterior angles acute, projecting beyond apex. Punctuation fine and dense as on clypeus, punctures bearing fine setae. Propleura longitudinally wrinkled. Prosternum hardly punctate, sloping towards apical border. Prosternal process with apical portion bend downward, apex tongue-shaped and somewhat upturned.



Figs 1-3: Fig. 1. Dorsal view of *Postandrosus maculosus* sp. n., holotype. Fig. 2-3. Dorsal view of head of *Postandrosus* species. Fig. 2. *P. maculosus* sp. n., Fig. 3. *P. maculipennis* KULZER, 1951.

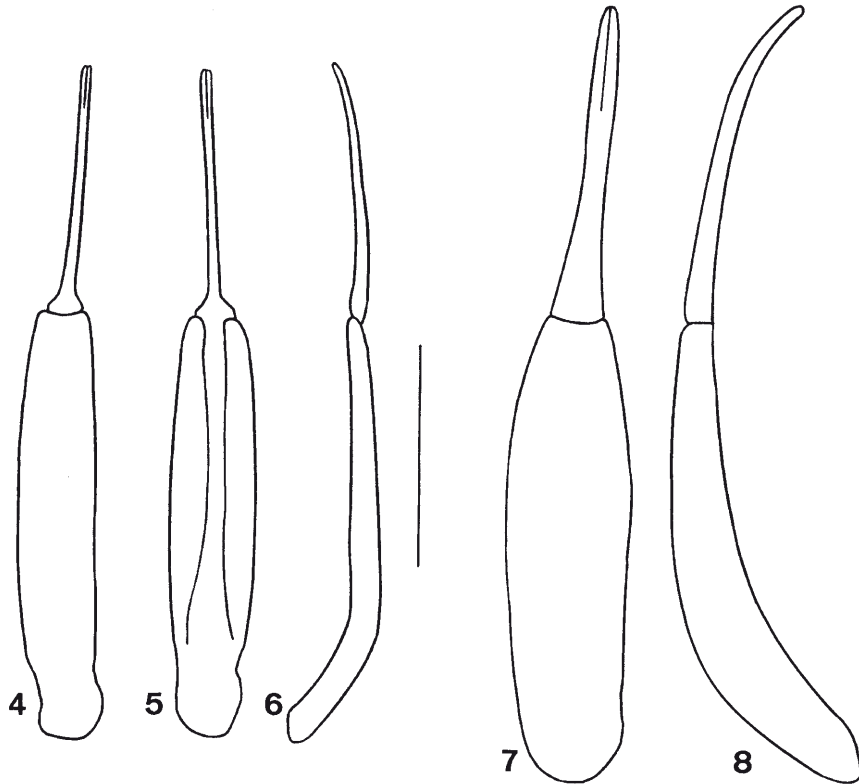
Elytra convex, each with two reddish maculae, a transverse oval macula before middle, and a roundish macula before apex; with rows of punctures; punctation of intervals very fine, dense; punctures of striae half to one diameter apart. Sides subparallel including the point of greatest width behind middle, then rounded towards apex, the latter rounded. Along sides with a fine submarginal depression. Lateral margins visible from above, only concealed at apex. Base medially emarginated.

Mesosternum with deep v-shaped incision. Metasternum, and first abdominal sternite apically bordered. Metasternum with fine and sparse punctures at sides, denser and coarser in the middle. Abdominal sternites fine and densely punctured, punctures with very fine setae.

Aedeagus see Figs 4-5.

Differential diagnosis. *P. maculosus* sp. n. (Fig. 1) is quite similar in general appearance to *P. maculipennis* KULZER, 1951, but the colour of the pronotum is castaneous in *P. maculosus* sp. n., black in *P. maculipennis*, the colour of spots is orange to reddish in *P. maculosus* sp. n., yellowish in mature specimens of *P. maculipennis* and the frons between the eyes is smaller in *P. maculosus* sp. n. (Fig. 2) than in *P. maculipennis* (Fig. 3). The parameres of the aedeagus (Figs 4-6) are slender and the sides are subparallel in *P. maculosus* sp. n., towards apex only slightly curved ventrad, broader, narrowing in the middle and distinctly curved ventrad distally in *P. maculipennis* (Figs 7-8).

Habitat. The specimens were found after dusk on trunks of trees.



Figs 4-8: Aedeagus of *Postandrosus* species. **Figs 4.-6.** *P. maculosus* sp. n., **Fig. 4.** dorsal, **Fig. 5.** ventral, **Fig. 6.** lateral. **Fig. 7-8.** *P. maculipennis* KULZER, 1951, **Fig. 7.** dorsal, **Fig. 8.** lateral. Scale: 1 mm.

***Postandrosus maculipennis* KULZER, 1951**

(Figs 3, 7-8)

Material. Borneo, Malaysia, Sarawak, Kuching, Reservoir Park, 50 m, 4.-5.III.2008, 1 ♂, R. GRIMM leg. (CRG). – Borneo, Malaysia, Sarawak, Kubah National Park, near Headquarter, 100-300 m, 27.-28.III.2009, 1 ♂, R. GRIMM leg. (CRG). – Borneo, Malaysia, Sarawak, NW Kuching, Matang Wildlife Centre, 50-100 m, 16.-17.III.2008, 1 ♀, R. GRIMM leg. (CRG). – Borneo, Malaysia, Sarawak, Santubong Peninsula, Permai Rainforest Resort, 10-200 m, 11.-28.IX.2008, 2 ♂, 2 ♀, R. GRIMM leg. (CRG); same locality, 4.-8.IV.2009, 1 ♀, R. GRIMM leg. (CRG). – Borneo, Malaysia, Sarawak, Gunung Gading National Park, 100-300 m, 23.-29.IX.2008, 1 ♀, R. GRIMM leg. (CRG); same locality, 31.III.-4.IV.2009, 2 ♀, R. GRIMM leg. (CRG).

Remarks. So far only one specimen of *P. maculipennis* was known from Sarawak, without detailed information on the locality (KULZER 1952, GRIMM 2008).

Distribution. Peninsular Malaysia, Borneo (Sabah, Sarawak, Kalimantan).

Acknowledgement

Cordial thanks are due to Dr. Wolfgang SCHAWALLER (Stuttgart) for reading the manuscript, and Johannes REIBNITZ (Stuttgart) for producing the photographs.

Zusammenfassung

Postandrosus maculosus sp. n. von Borneo (Malaysia, Sarawak) wird beschrieben und mit *P. maculipennis* KULZER, 1951 verglichen. Ergänzende Angaben zur Faunistik von *P. maculipennis* werden gemacht.

References

- GRIMM, R. 2008: The genus *Postandrosus* KULZER, 1951 – Sexual dimorphism in *P. ater* KULZER, 1952 and new faunistic data (Coleoptera: Tenebrionidae, Stenochiinae, Cnodalonini). – Entomologische Zeitschrift **118** (3), 117-118.
- KULZER, H. 1951: Fünfter Beitrag zur Kenntnis der Tenebrioniden. – Entomologische Arbeiten aus dem Museum Georg Frey **2**, 461-573.
- KULZER, H. 1952: Siebender Beitrag zur Kenntnis der Tenebrioniden. Einige neue Gattungen und Arten der Tribus Cnodalonini aus dem Nachlass von H. GEBIEN in coll. FREY. – Entomologische Arbeiten aus dem Museum Georg Frey **3**, 719-764.

Author's address:

Dr. Roland GRIMM
Denzenbergstraße 44
D-72074 Tübingen

ZOBODAT - www.zobodat.at

Zoologisch-Botanische Datenbank/Zoological-Botanical Database

Digitale Literatur/Digital Literature

Zeitschrift/Journal: [Mitteilungen der Münchner Entomologischen Gesellschaft](#)

Jahr/Year: 2009

Band/Volume: [099](#)

Autor(en)/Author(s): Grimm Roland

Artikel/Article: [A new species of *Postandrosus* KULZER, 1951 and new records of *P. maculipennis* KULZER, 1951 from Sarawak \(Malaysia, Borneo\) \(Coleoptera: Tenebrionidae, Stenochiinae, Cnodalonini\). 17-20](#)