

## A new species of *Palorinus* (BLAIR, 1930) from Nilgiri Hills in southern India

(Coleoptera: Tenebrionidae: Tenebrioninae: Palorini)

**Roland GRIMM**

### Abstract

*Palorinus vittatus* sp. n. from Nilgiri Hills in southern India is described and compared with *P. quadraticollis* (BLAIR, 1930), also described from Nilgiri Hills, and with *P. dointhanensis* GRIMM, 2003 from Doi Inthanon (N Thailand).

### Introduction

The genus *Palorinus* has been described by BLAIR (1930) as subgenus of *Palorus* (MULSANT, 1854) and was upgraded by HALSTEAD (1967). Type species is *Palorus humeralis* GEBIEN, 1914. A review of the species of *Palorinus* was given by GRIMM (2003) and GRIMM (2004) described from Thailand an additional species. So far two species are known from India: *P. bicolor* (BLAIR, 1930) and *P. quadraticollis* (BLAIR, 1930). An additional species is described hereafter.

### Acronyms of depositories

CRG - Collection ROLAND GRIMM, Neuenbürg; SMNS - Staatliches Museum für Naturkunde, Stuttgart.

### *Palorinus vittatus* sp. n.

(Figs 2, 4-5)

**Holotype** ♂: S-India, Tamil Nadu State, Nilgiri Hills, 10 km SW of Manjoor, 76°35'E11°12'N, Thiashola, reserved forest, near Canington estate, ca. 2100 m, 14.-19.VI.1999, Z. KEJVAL & M. TRÝZINA leg. (SMNS).

**Paratypes**. 4 specimens (SMNS), 1 specimen (CRG), same data as holotype.

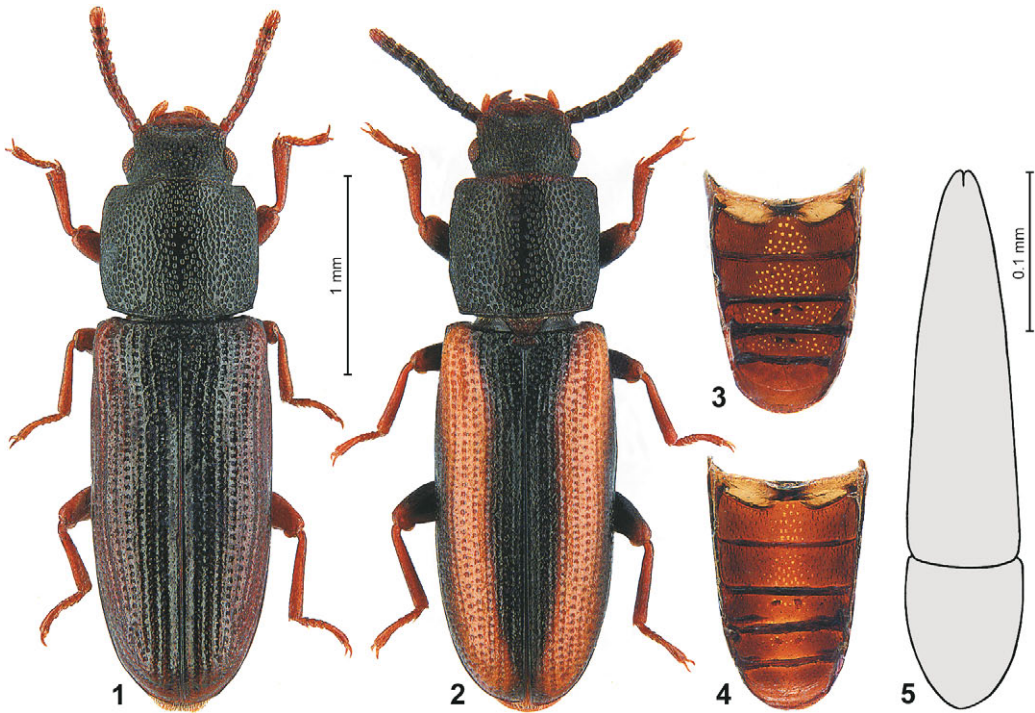
**Derivatio nominis**. The species name refers to the broad longitudinal stripe (vitta) on each elytron.

#### **Description.**

Elongate, subparallel, black, moderately shining; mouthparts, legs, last antennomere and larger parts of underside paler brownish to fuscous; elytra each mesally with broad longitudinal fuscous stripe from humerus to apex; micro-reticulation indistinct where present. Body length 2.8–3.4 mm, body width 0.9–1.0 mm.

Head densely, coarsely punctured, punctures excluding that of clypeus longitudinal rugose; fronto-clypeal suture distinct; clypeus transverse, obtusely angled towards genae; genae slightly raised above antennal insertions, with outer margins obtusely angled. Eyes small, dorsal length less than distance from basal anterior border of eye to clypeo-genal suture, ratio 8:11. Antennae thick, with pedicel slightly longer than first flagellar antennomere; apex of scape not visible in dorsal view.

Pronotum quadrate, densely punctured; punctures coarser and denser laterally than on disc, spaces between punctures smaller than punctures, except on a more or less marked, nearly smooth longitudinal midline. Anterior border straight with margin mesally widely interrupted; lateral borders sub parallel in



**Figs 1-5:** Fig. 1-2. Dorsal view of *Palorinus* species. Fig. 1. *P. doiinthanensis* GRIMM, paratype. Fig. 2. *P. vittatus* sp. n., paratype. Fig. 3-4. Inner pits of abdominal sternites. Fig. 3. *P. doiinthanensis* GRIMM, 2003. Fig. 4. *Palorinus vittatus* sp. n. Fig. 5. Aedeagus of *Palorinus vittatus* sp. n., dorsal.

apical two thirds then slightly convergent towards base; basal border slightly rounded; anterior angles obtusely rounded, posterior angles distinct, slightly obtuse; lateral borders and basal border distinctly margined.

Elytra with strongly punctured striae; intervals slightly broader than striae with single rows of punctures. Scutellum transverse, punctured; scutellary striole of four to five punctures. Abdominal sternites 1–4 mesally with inner pits (Fig. 4).

Aedeagus (Fig. 5) inverted.

**Differential diagnosis.** *P. quadraticollis* (Blair, 1930) is also originate from Nilgiri Hills and so far only known by type specimens. It can be separated from *Palorinus vittatus* sp. n. by smaller body size (body length 2.3–2.7 mm, body width 0.7–0.8 mm), different colour pattern of elytra (unicoloured brown), and larger and more prominent eyes (ratio dorsal length to distance from anterior basal border of eye to clypeo-genal suture 11:8). *P. vittatus* sp. n. resembles *P. doiinthanensis* GRIMM, 2003 from northern Thailand and has also a similar aedeagus, but can be distinguished from *P. doiinthanensis* by elytra having a distinct colour pattern (compare Figs 1, 2), by the more rugose punctuation of frons and vertex, by the quadrate pronotum (slightly transverse in *P. doiinthanensis*), and by the intervals of elytra slightly broader than striae (narrower than striae in *P. doiinthanensis*). The aedeagus of *P. vittatus* sp. n. is similar to that of *P. doiinthanensis* but has a longer apical piece (compare Fig. 5, GRIMM 2003: Abb. 10). Furthermore both species are distinctly different in the pattern of inner pits of abdominal sternites 1–4 (compare Figs 3, 4).

### Acknowledgement

Cordial thanks are due to Johannes REIBNITZ (SMNS) for producing the photographs and arranging the figures on plates.

### Zusammenfassung

*Palorinus vittatus* sp. n. von den Nilgiri Hills im südlichen Indien wird beschrieben und mit der ebenfalls von den Nilgiri Hills beschriebenen Art *P. quadraticollis* (BLAIR, 1930) sowie mit *P. doiinthanensis* GRIMM, 2003 vom Doi Inthanon (N Thailand) verglichen.

### References

- BLAIR, K. G. (1930): The Indian species of *Palorus* Muls. (Coleoptera: Tenebrionidae) and some associated beetles. – Indian Forest Records **14**: 133-152, 1 plt.
- GRIMM, R. 2003: Die Arten der Gattung *Palorinus* BLAIR, mit Beschreibungen von vier neuen Arten (Coleoptera: Tenebrionidae). – Stuttgarter Beiträge zur Naturkunde, Serie A, Nr. **646**, 1-9.
- GRIMM, R. 2004: Neue Arten der Gattungen *Palorinus* BLAIR, 1930 und *Paloropsis* MASUMOTO et GRIMM, 2004 aus Indien und Thailand (Coleoptera, Tenebrionidae, Palorinae). – Entomologia Basiliensia **26**, 293-298.
- HALSTEAD, D. G. H. (1967): A revision of the genus *Palorus* (sens. lat.) (Coleoptera: Tenebrionidae). – Bulletin of the British Museum (Natural History) Entomology **19**: 59-148.

Author's address:

Dr. Roland GRIMM  
Unterer Sägerweg 74  
D-75305 Neuenbürg  
e-mail: roland.grimm@lfvbw.de

# ZOBODAT - [www.zobodat.at](http://www.zobodat.at)

Zoologisch-Botanische Datenbank/Zoological-Botanical Database

Digitale Literatur/Digital Literature

Zeitschrift/Journal: [Mitteilungen der Münchner Entomologischen Gesellschaft](#)

Jahr/Year: 2011

Band/Volume: [101](#)

Autor(en)/Author(s): Grimm Roland

Artikel/Article: [A new species of Palorinus \(BLAIR, 1930\) from Nilgiri Hills in southern India \(Coleoptera: Tenebrionidae: Tenebrioninae: Palorini\). 69-71](#)