

Mitt. Münch. Ent. Ges.	103	81-84	München, 15.10.2013	ISSN 0340-4943
------------------------	-----	-------	---------------------	----------------

**A new species of *Sclerum* DEJEAN, 1834
from the United Arab Emirates and Oman
(Coleoptera: Tenebrionidae: Tenebrioninae: Opatrini)**

Roland GRIMM

Abstract

Sclerum bremeri **sp. n.** from the United Arab Emirates and Oman is described. The new species is very similar to *Sclerum evansi* (BLAIR, 1923), but is among others distinguished by the subcordate pronotum with obtuse, ill-defined posterior angles and with middle part of base more protruding beyond posterior angles, and by the different shape of aedeagus. New faunistic data of *S. evansi* (BLAIR, 1923) from Saudi Arabia are given.

Introduction

KASZAB (1982) cited the following species and subspecies of *Sclerum* DEJEAN, 1834 (under *Scleron* HOPE, 1840) from the Arabian Peninsula: *S. sulcatum sulcatum* (BAUDI DI SELVE, 1876), *S. sulcatum scotti* (GRIDELLI, 1953), *S. orientale orientale* (FABRICIUS, 1775), *S. orientale yemense* (KASZAB, 1972), *S. evansi* (BLAIR, 1923), and *S. carinatum* BAUDI DI SELVE, 1875. Newly collected material in the United Arab Emirates and Oman yielded a new species which is described below. In a synopsis of the Tenebrionidae of the United Arab Emirates SCHAWALLER (2010) listed and figured this new species preliminary under *S. evansi*. For *S. evansi* additional faunistic records from Saudi Arabia are given.

Acronyms of depositories

CKH – Collection Dr. Klaus HANDKE, Ganderkessee, Germany; CRG – Collection Dr. Roland GRIMM, Neuenbürg, Germany; NHMB – Naturhistorisches Museum Basel, Collection FREY, Switzerland; SMNS – Staatliches Museum für Naturkunde, Stuttgart, Germany; ZSMB – Collection Prof. (emer.) Dr. Hans J. BREMER, Osnabrück in Zoologische Staatssammlung, Munich, Germany.

***Sclerum bremeri* sp. n. (Figs 1, 4)**

Holotype: ♂, United Arab Emirates, Hajar Gebirge [mountains], Uyayna, 20.II.1989, U. & H. J. BREMER leg. (ZSMB).

Paratypes: Same data as holotype, 9 specimens (ZSMB), 3 specimens (CRG). – United Arab Emirates, Umg.[vic.] Manamah, Sandwüste [sandy desert], 24.II.1989, U. & H. J. BREMER leg., 2 specimens (ZSMB). – United Arab Emirates, Ras-al-Khaimah, Al-Sha'm, Palmengarten am Meer [palm garden at seaside], 24.II.1989, U. & H. J. BREMER leg., 3 specimens (ZSMB). – United Arab Emirates, Halbinsel [Peninsula] Musandam, Khor Fakkan, 12.–18.II.1989, U. & H. J. BREMER leg., 2 specimens (ZSMB). – United Arab Emirates, Umg. [vic.] Jebel Ali, Salzsteppe [salt steppe], 16.III.1990, H. J. BREMER leg., 1 specimen (ZSMB). – V.A.E. [United Arab Emirates], Dubai, 22.II.–5.III.1995, K. HANDKE leg., 2 specimens (CGH), 2 specimens (CRG). – V.A.E. [United Arab Emirates], Al Ain, 22.II.–5.III.1995, K. HANDKE leg., 1 speci-

men (CKH), 1 specimen (CRG). – V.A.E. [United Arab Emirates], Tayibah Plain, 22.II.–5.III.1995, K. HANDKE leg., 2 specimens (CRG). – V.A.E. [United Arab Emirates], Wadi Sumayni, 22.II.–5.III.1995, K. HANDKE leg., 1 specimen (CRG). – U. A. Emirates, Wadi Safad, 300 m, 14.XII.2010, W. SCHAWALLER leg., 1 specimen (SMNS). – U. A. Emirates, Kalba, 5.XII.2010, W. SCHAWALLER leg., 2 specimens (SMNS). – U. A. Emirates, Wadi Shawqa, 5.XII.2010, W. SCHAWALLER leg., 4 specimens (SMNS). – U. A. Emirates, Wadi Wuraya, 200–300 m, 8.XII.2010, W. SCHAWALLER leg., 1 specimen (SMNS). – U. A. Emirates, Umm Al Quawein, coast, 6.XII.2010, W. SCHAWALLER leg., 1 specimen (SMNS). – U. A. Emirates, Al Siji, 300 m, 11.XII.2010, W. SCHAWALLER leg., 7 specimen (SMNS), 1 specimen (CRG). – U. A. Emirates, Al Mahafiz, 4.XII.2010, W. SCHAWALLER leg., 10 specimens (SMNS), 1 specimen (CRG). – U. A. Emirates, Um al-Quwain, 1.–30.XI.2008, A. v. HARTEN leg., Nr. 10171, 5 specimens (SMNS) [published by SCHAWALLER (2010) under *S. evansi*]. – Oman Al Buraimi, 18.XII.2001, M. GILLET leg., 2 specimens (SMNS).

Derivatio nominis: Named in honour of Prof. Dr. H. J. BREMER (Osnabrück), one of the collectors of the type series.

Description: Oblong, subparallel, blackish, the whole surface rather densely micro-granulate. Body length 6.0–7.5 mm, body width 2.4–3.0 mm.

Head with apical half strongly transverse and densely granulated, each granule bearing a scale-like seta; between clypeus and frons with a vigorous transversal bulge, behind this broadly transversally furrowed; at the inner border of eyes with a longitudinal bulge; frons in the middle with two bump-like elevations.

Pronotum subcordate, transverse, transverse convex, with lateral borders explanate; widest in the middle, the sides thence arcuate to the anterior angles, nearly straight or slightly emarginated before, but converging to the posterior angles; base as wide as apex, feebly bisinuate, in the middle protruding posteriorly and arcuate, only slightly emarginated before posterior angles; anterior angles acute, strongly protruding beyond anterior border; posterior angles obtuse, ill-defined. Surface densely covered with pearl-like setigerous granules. Disc in the middle of anterior border with transverse bulge, and the midline weakly raised; laterally with two shallow impressions near base and near apex behind the transverse bulge; behind the anterior and aside the posterior impressions with gently elevations and laterally of the latter with a longitudinal impression.

Elytra elongate, subparallel for about two-thirds of their length, apices broadly arcuate, base concave emarginated; intervals with single rows of setigerous granules; the 3rd, 5th, and 7th intervals elevated, more closely granulate, somewhat thickened at base, and here with two rows of granules; the 5th distinctly and sometimes the 3rd at the base somewhat projecting forwards; intermediate intervals less prominent, with more widely-spaced granules; the seriate punctures large and deep, between 7th interval (humeral carina) and lateral border with 3 rows of punctures.

Aedeagus see Fig. 4.

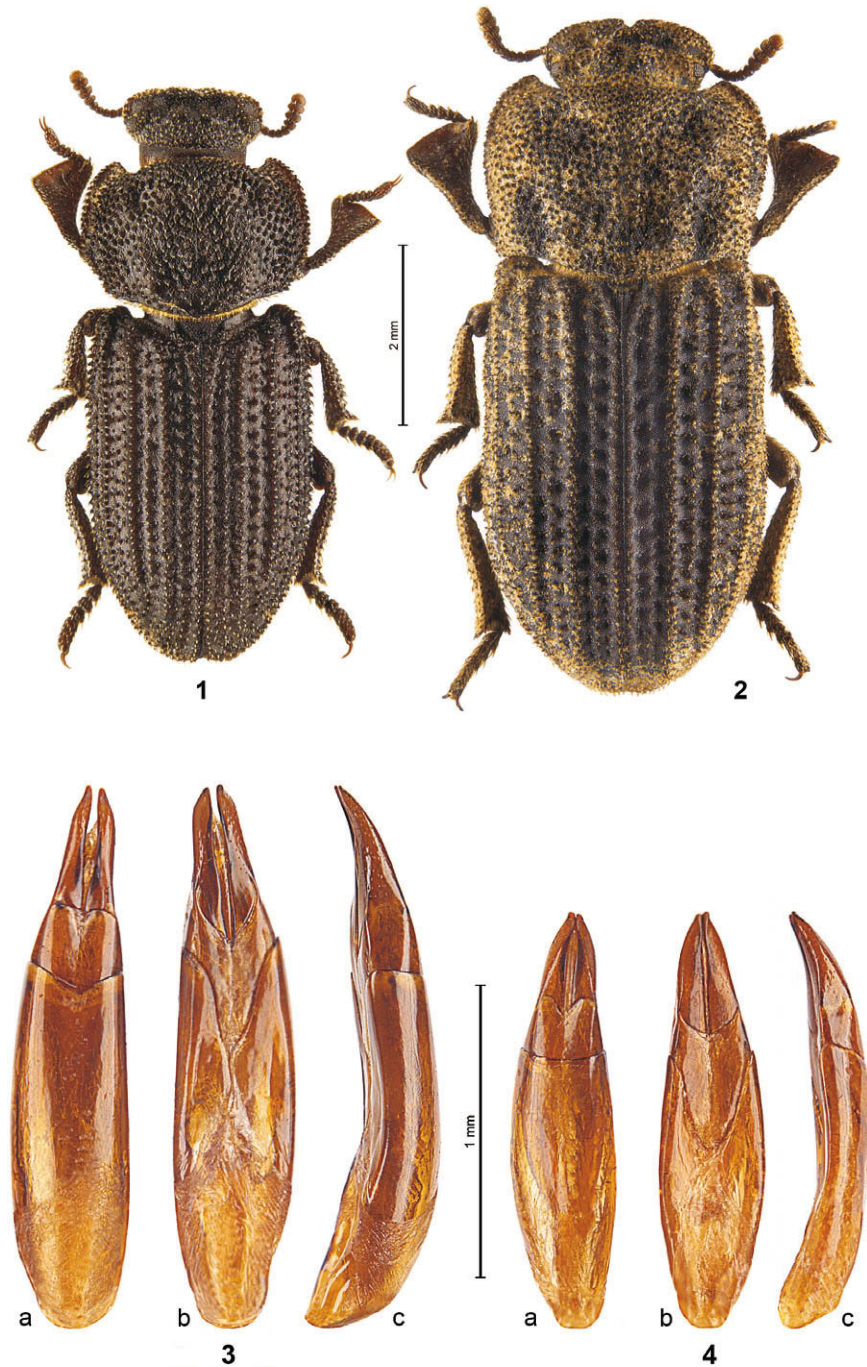
Differential diagnosis: *Sclerum bremeri* sp. n. (Fig. 1) is similar to *Sclerum evansi* (BLAIR, 1923) (Fig. 2). However, in *S. evansi* the pronotum is not subcordate but more rectangular, the basal border before posterior angles deeper emarginated and thus the posterior angles are prominent; the arcuate middle part of the base is less protruding beyond posterior angles. The elytra are slightly divergent towards posterior two thirds, and thence arcuate constricted. The 3rd, 5th, and 7th intervals are strongly raised (carinate) and are partially equipped with 2 rows of setigerous granules. Both, basal and apical piece of aedeagus (Fig. 3) more elongate, and basal piece more parallel-sided. Apex of apical piece longer and laterally emarginated.

Sclerum evansi (BLAIR, 1923) (Figs. 2, 3)

Type material studied: Arab: F. BATES, 81•19; 2 Cotypes, No. 1140 (NHMBF).

New material: Saudi Arabia, 50 km S Taif, 1800 m, 7.I.1994, U. & H. J. BREMER leg., 1 specimen (ZSM). – Saudi Arabia, Al Baha, W Elzaraeb, 2090 m, 9.V.2011, M. R. SHARAF leg., 1 specimen (CRG), 3 specimens (SMNS).

Distribution: Iran, Iraq, Saudi Arabia (LÖBL & SMETANA 2008).



Figs 1-2: Dorsal view of *Sclerum* species. **Fig. 1.** *S. bremeri* sp. n., holotype ZSM. **Fig. 2.** *S. evansi* (BLAIR, 1923), non-type ZSM.

Figs 3-4: Aedeagi of *Sclerum* species, **a** dosal, **b** ventral, **c** lateral. **Fig. 3.** *S. evansi* (BLAIR, 1923), non-type ZSM. **Fig. 4.** *S. bremeri* sp. n., holotype ZSM.

Acknowledgements

For the loan and/or gift of specimens I thank Dr. Michael BALKE (München), Prof. Dr. Hans J. BREMER (Osnabrück), Dr. Klaus HANDKE (Ganderkessee), Dr. Wolfgang SCHAWALLER (Stuttgart), and Dr. Eva SPRECHER (Basel). Furthermore I am grateful to Johannes REIBNITZ (Stuttgart) for producing the photographs and arranging the figures on plates, and to Dr. Wolfgang SCHAWALLER for reviewing the manuscript.

Zusammenfassung

Sclerum bremeri sp. n. aus den Vereinigten Arabischen Emiraten und dem Oman wird beschrieben und mit *S. evansi* (BLAIR, 1923) verglichen. Neue faunistische Angaben zu *S. evansi* werden gemacht.

References

- KASZAB, Z. 1982: Insects of Saudi Arabia, Coleoptera: Fam. Tenebrionidae (Part 2). Zusammenfassung der bis jetzt aus Arabien bekanntgewordenen Tenebrioniden (Second part). – Fauna of Saudi Arabia **4**: 124–243.
- LÖBL, I. & A. SMETANA (ed.) 2008: Catalogue of Palaearctic Coleoptera, Vol. **5**: 670 pp., Stenstrup: Apollo books.
- SCHAWALLER, W. 2010: Order Coleoptera, family Tenebrionidae (with exception of the subfamily Alleculinae). – Arthropod fauna of the United Arabian Emirates **3**: 253–278.

Author's address:

Dr. Roland GRIMM
Unterer Sägerweg 74
75305 Neuenbürg
Germany
grimm.tenebrio@t-online.de

ZOBODAT - www.zobodat.at

Zoologisch-Botanische Datenbank/Zoological-Botanical Database

Digitale Literatur/Digital Literature

Zeitschrift/Journal: [Mitteilungen der Münchner Entomologischen Gesellschaft](#)

Jahr/Year: 2013

Band/Volume: [103](#)

Autor(en)/Author(s): Grimm Roland

Artikel/Article: [A new species of Sclerum DEJEAN, 1834 from the United Arab Emirates and Oman \(Coleoptera: Tenebrionidae: Tenebrioninae: Opatrini\) 81-84](#)