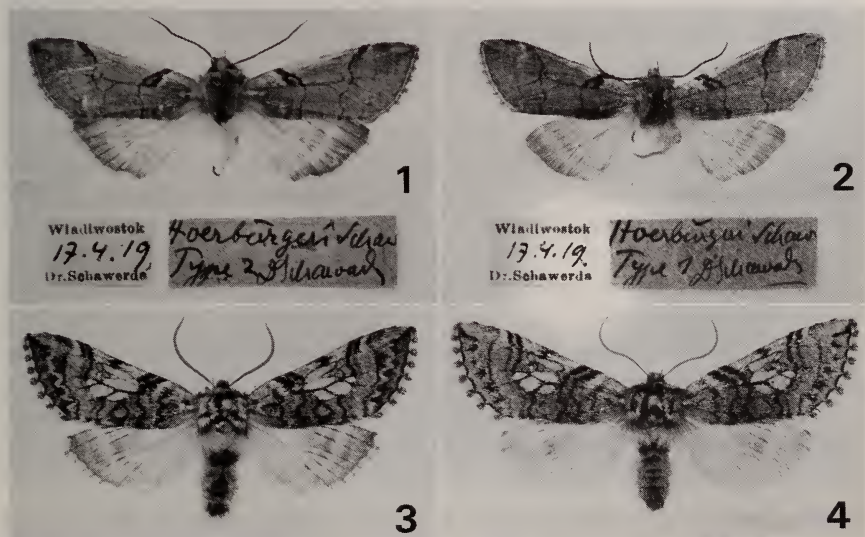


Redescription of *Achlya hoerburgeri* (SCHAWERDA),
comb. n.
(Lepidoptera, Thyatiridae)

Hiroshi YOSHIMOTO

Tokyo High School, 39-1, Unoki 2-chome, Ota-ku, Tokyo, 146, Japan.

Recently, thanks to Dr. M. LÖDL of the Natural History Museum, Vienna, I was able to study the type specimens of *Polyploca hoerburgeri* SCHAWERDA, 1924, described from Ussuri as a species similar to *flavicornis* (LINNAEUS), which he also placed in the genus *Polyploca*. Close examination of these specimens showed that *hoerburgeri*, although externally very similar, is a species distinct from the Eurasian *Achlya flavicornis* (LINNAEUS, 1758), and is more closely related to *Achlya longipennis* INOUE, 1972, described from Japan. As *P. hoerburgeri* has remained virtually unknown, I redescribe it below.



Figs. 1-4. Two *Achlya* species. 1. *A. hoerburgeri* (SCHAWERDA), ♂, lectotype, Vladivostok. 2. *idem*, ♀, paralectotype, Vladivostok. 3. *A. l. longipennis* INOUE, ♂, Honshu, Yamanashi Pref., Enzan, Saiki-rindo (1500 m). 4. *idem*, ♀, Honshu, Yamanashi Pref., Enzan, Saiki-rindo (1500 m).

Achlya hoerburgeri (SCHAWERDA, 1924), comb. n. (Figs. 1, 2)

Polyploca hoerburgeri SCHAWERDA, 1924, *Verh. zool.-bot. Ges. Wien* 73 : (90), pl. (color) [1] : 18 ; SEITZ, 1933, in SEITZ, *Gross-Schmett. Erde* 2 (suppl.) : 286.

MATERIAL : 1 ♂ 1 ♀, Vladivostok, 17.IV.1919, both syntypes. ♂ (fig. 1) here designated as lectotype, pinned with two labels : "Wladiwostok, 17.4.19. Dr. SCHAWERDA", "*Hoerburgeri* SCHAW. Type 2, D. SCHAWERDA", slide HY-1368. 1 ♀ (fig. 2), paralectotype, slide HY-1367. Both in the collection of the Natural History Museum, Vienna.

DESCRIPTION : ♂ ♀. Length of forewing 18-20 mm, expanse 39-43 mm. Nearly equal in size to *A. flavicornis*, to which *hoerburgeri* is superficially similar. Forewing pale grey, subcosta strongly tinged white from postmedian line almost to base, orbicular and reniform stigmata lacking ; antemedian line black, thin, preceded by short thick black line in cell ; postmedian line black, thin, weakly undulating, short black costal bar just beyond ; other lines very faint.

MALE GENITALIA (Fig. 5) : In all aspects very similar to *longipennis* (Fig. 7), but terminal process of sacculus lobed, whereas in *longipennis* it is long and pointed ; subapical process of aedeagus spatular, so thick and strong that aedeagus appears Y-shaped as in *Polyploca ridens* (FABRICIUS, 1787) ; cornuti much weaker.

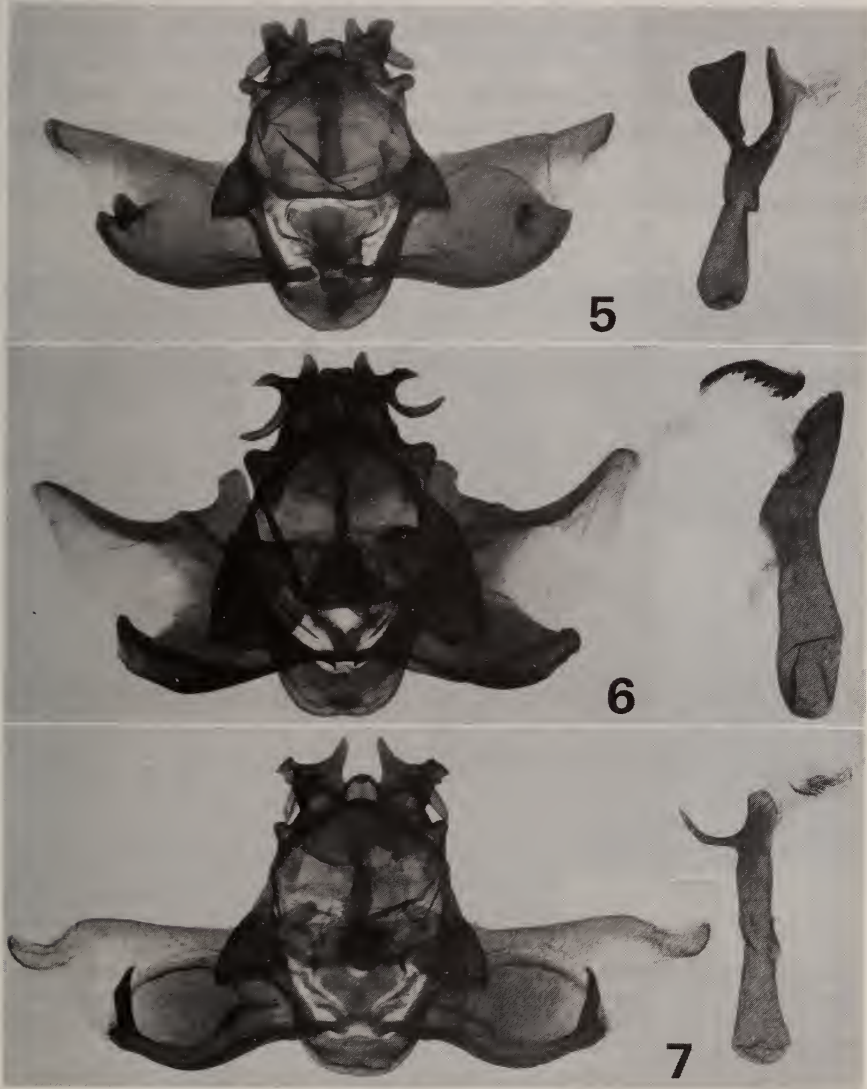
FEMALE GENITALIA (Fig. 8) : Genital segment relatively smaller than those of *longipennis* and *flavicornis* ; lamella antevaginalis simple as in *flavicornis*, consisting of pair of large sclerites originating from 8th sternum ; corpus bursae ovate, with a weak signum.

KNOWN DISTRIBUTION : Vladivostok, Primorye region of USSR.

REMARKS : The type series consists of a pair of specimens collected in the year 1919, while in the original description two ♂♂, captured by Dr. HÖRBURGER in 1918, are mentioned. The lectotype ♂ here designated is the same specimen figured by SCHAWERDA (1924).

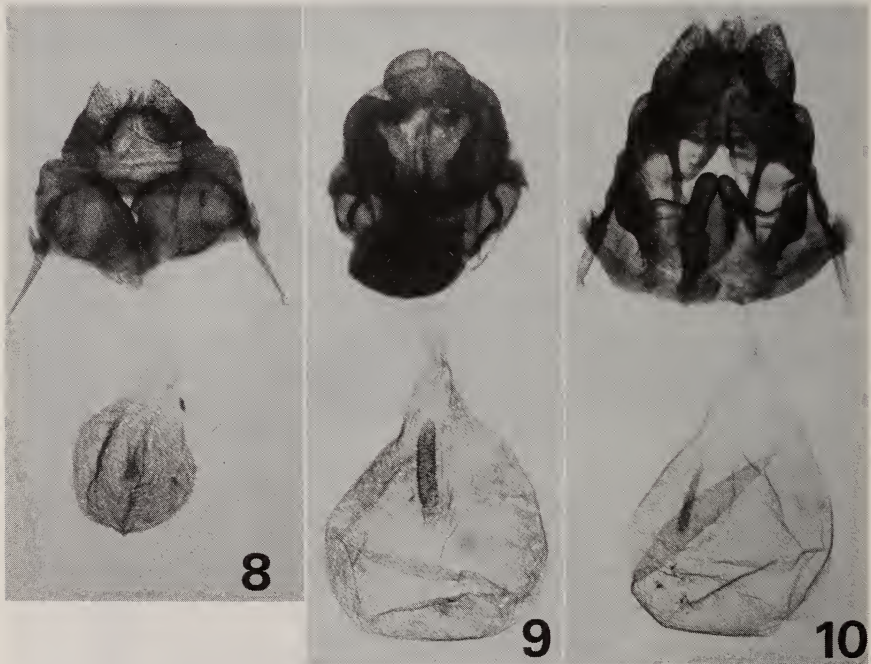
Discussion

There has apparently been no record of this species since the original description. However, its obvious similarity to *flavicornis* may cause misidentification with the latter, which ranges widely from England to Japan



Figs. 5-7. Male genitalia of *Achlya* species. 5. *A. hoerburgeri* (SCHAWERDA), lectotype, slide HY-1368. 6. *A. flavicornis jezoensis* (MATSUMURA), Hokkaido, Kushiro, Shibechea, slide HY-1369. 7. *A. l. longipennis* INOUE, Honshu, Yamanashi Pref., Enzan, Saiki-rindo (1500 m), slide HY-1370.

(Hokkaido), including Ussuri. Its closest relative, *longipennis*, is known to inhabit Honshu (ssp. *longipennis*) and Hokkaido (ssp. *tateyamai* INOUE, 1982, and ssp. *inokoi* INOUE, 1982). According to Dr. Yu. A. TSHISTJAKOV of the Institute of Biology and Pedology, Academy of Science, Vladivostok (pers. comm.), *longipennis* is also distributed in the Primorye District of USSR. It would be very interesting to know whether all three * species of genus *Achlya* BILLBERG, 1820, fly together, or whether their local distribution is different.



Figs. 8-10. Female genitalia of *Achlya* species. 8. *A. hoerburgeri* (SCHAWERDA), paralectotype, slide HY-1367. 9. *A. flavicornis jezoensis* (MATSUMURA), Hokkaido, Shari-gun, Koshimizuchō, slide HY-1371. 10. *A. l. longipennis* INOUE, Honshu, Yamanashi Pref., Enzan, Saikirindo (1500 m), slide HY-1372.

* *Asphalia nigrofascicula* GRAESER, 1888 (*Berl. ent. Z.* 32 : 152), described from Amur, may be closely related to species of the genus *Achlya*. However, the size given in the original description is much smaller (30-33 mm in expanse) than that of the *Achlya* species treated here. I do not think that this species belongs to *Achlya*.

Acknowledgements

I must again express my cordial thanks to Dr. M. LÖDL, Vienna, and Dr. Yu. A. TSHISTJAKOV, Vladivostok. My sincere thanks are also due to Dr. M. OWADA of National Science Museum (Nat. Hist.), Tokyo, for his kindness in taking photographs.

References

- INOUE, H., 1972. Descriptions of two new species of the Thyatiridae from Japan (Lepidoptera). *Bull. Jap. ent. Acad.* 6 (2) : 29-35, pl. 5.
- INOUE, H., 1982. Thyatiridae. In INOUE *et al.*, Moth of Japan 1 : 418-425, 2 : 260-263, pls. 52-54, 228, 277. Kodansha Co. Ltd., Tokyo. (In Japanese).
- SCHAWERDA, K., 1924. In Berichte der Sektion für Lepidopterologie, Versammlung am 6. April 1923. *Verh. zool.-bot. Ges. Wien* 73 : (87-90), 1 pl. (color).
- SEITZ, A., 1933. Cymatophoridae. In SEITZ, Gross-Schmetterlinge der Erde, 2 (Suppl.) : 187-195, 286, pls. 11, 14-16. Kernen, Stuttgart.

ZOBODAT - www.zobodat.at

Zoologisch-Botanische Datenbank/Zoological-Botanical Database

Digitale Literatur/Digital Literature

Zeitschrift/Journal: [Nota lepidopterologica](#)

Jahr/Year: 1989

Band/Volume: [12](#)

Autor(en)/Author(s): Yoshimoto Hiroshi

Artikel/Article: [Redescription of *Achlya hoerburgeri* \(Schawerda\), comb. n. \(Lepidoptera, Thyatiridae\) 159-163](#)