

Relocation of primary types of butterflies (Papilionoidea) described by S. K. Korb in the Y. B. Kosarev collection

STANISLAV K. KORB

a/ya 2, Knyaghinino, Nizhny Novgorod reg. 606340 Russia; stanislavkorb@list.ru

Abstract. The primary types of *Paralasa alajense* Korb, 2004, *Paralasa jordana tolkienii* Korb, 2009 (Nymphalidae: Satyrinae), *Athamanthia alexandra melkor* Korb, 2003, *Maculineaalcon aulendil* Korb, 2009, *Albulina tshatkala* Korb, 1997, *Agrodiaetus ishkashimicus alajanus* Korb, 1997 and *Polyommatus kirgisorum gorthaur* Korb, 2009 (Lycaenidae) are transferred from the private collection of Y. B. Kosarev to the Zoological Museum of Moscow University. Illustrations of these types are provided.

On August 13th, 2008 one of the well-known Russian amateur entomologists, Yuri Kosarev, passed away. I had known him for 20 years and during that time maintained an active and very good relationship with him. Some of my descriptions of new butterfly taxa were based on his material and so the primary types were included in his private collection. Currently access to the collection of Y. Kosarev is limited, and so all primary types present have been transferred to the Zoological Museum of Moscow State University (ZMMU). I am sincerely grateful to O. Kosarev, the son of Y. Kosarev, for the opportunity of retrieving these type specimens, as well as for their transfer to ZMMU.

List of the primary types from the Y. Kosarev collection relocated to the ZMMU

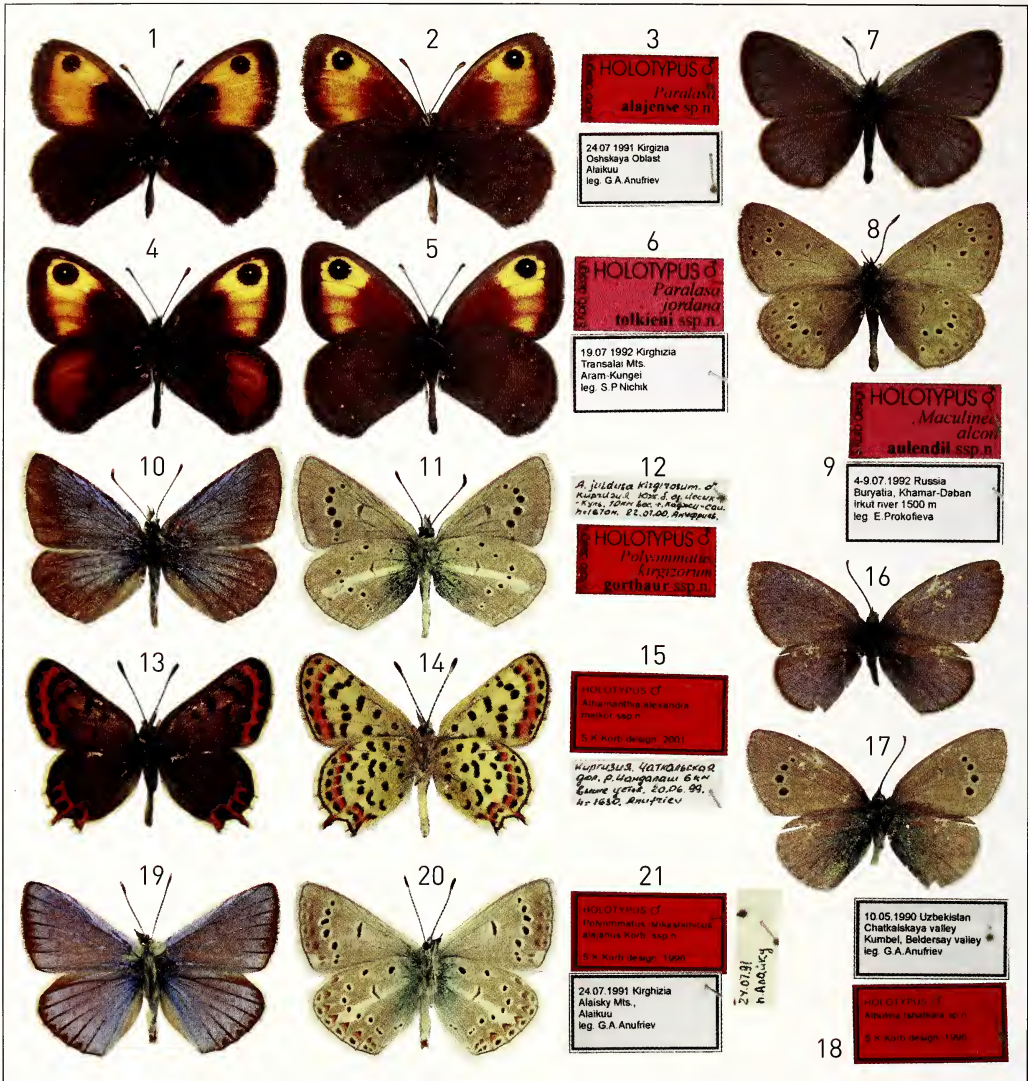
Paralasa alajense Korb, 2004 (Figs 1–3). Korb, 2004: 116, fig. 2. Holotype ♂, ‘24.07.1991 Kirgizia | Oschskaya Oblast | Alaikuu | leg. G. A. Anufriev’, ‘HOLOTYPUS ♂ | *Paralasa* | alajense sp.n.’ | S. Korb design.’

Paralasa jordana tolkienii Korb, 2009 (Figs 4–6). Korb, 2009a: 146–148. Holotype ♂, ‘19.07.1992 Kirghizia | Transalai Mts. | Aram-Kungei | leg. S. P. Nichik’, ‘HOLOTYPUS ♂ | *Paralasa* | jordana | tolkienii ssp.n. | S. Korb design.’

Maculineaalcon aulendil Korb, 2009 (Figs 7–9). Korb, 2009b: 133–134. Holotype ♂, ‘4.–9.07.1992 Russia | Buryatia, Khamar-Daban | Irkut river 1500 m | leg. E. Prokofieva’, ‘HOLOTYPUS ♂ | *Maculinea* |alcon | aulendil ssp.n. | S. Korb design.’

Polyommatus kirgisorum gorthaur Korb, 2009 (Figs 10–12). Korb, 2009c: 215–216. Holotype ♂, ‘A. juldusa kirgirosom [sic!] ♂ | Kirgizia Юж.[ный] б.[ерег] оз.[ера] Иссък- | Куль. 10 км вос. [точнее] г. Каджи-Сай. | h = 1670 m. 22.07.[20]00. Ануфриев’ [Kirghizia, southern coast of Issyk-Kul lake, 10 km E of Kadzhi-Say, 1670 m, 22.07.2000, leg. G. A. Anufriev] (Y. Kosarev’s handwriting), ‘HOLOTYPUS ♂ | *Polyommatus* | kirgisorum | gorthaur ssp.n. | S. Korb design.’

Athamanthia alexandra melkor Korb, 2003 (Figs 13–15). Korb, 2003: 47. Holotype ♂, ‘Kirgizia. Чаткальская | дол.[ина] р.[ека] Чандалаш 6 км | выше устья. 20.06.[19]99 | h = 1630 m. Anufriev’ [Kirghizia, Chatkalskaya valley, Chandalash River 6 km upstream from the mouth, 1630 m, 20.06.1999, leg. G. A. Anufriev] (Y. Kosarev’s handwriting), ‘HOLOTYPUS ♂ | *Athamanthia alexandra* | melkor ssp.n. | S. K. Korb design. 2001’



Figs 1–21. Primary types of butterflies described by Korb relocated from the Kosarev collection to the ZMMU. **1.** *Paralasa alajense* Korb, 2004. Holotype male, upperside. **2.** *Paralasa alajense* Korb, 2004. Holotype male, underside. **3.** *Paralasa alajense* Korb, 2004. Holotype male, labels. **4.** *Paralasa jordana tolkieni* Korb, 2009. Holotype male, upperside. **5.** *Paralasa jordana tolkieni* Korb, 2009. Holotype male, underside. **6.** *Paralasa jordana tolkieni* Korb, 2009. Holotype male, labels. **7.** *Maculineaalcon aulendil* Korb, 2009. Holotype male, upperside. **8.** *Maculineaalcon aulendil* Korb, 2009. Holotype male, underside. **9.** *Maculineaalcon aulendil* Korb, 2009. Holotype male, labels. **10.** *Polyommatus kirgisorum gorthaur* Korb, 2009. Holotype male, upperside. **11.** *Polyommatus kirgisorum gorthaur* Korb, 2009. Holotype male, underside. **12.** *Polyommatus kirgisorum gorthaur* Korb, 2009. Holotype male, labels. **13.** *Athamanthia alexandra melkor* Korb, 2003. Holotype male, upperside. **14.** *Athamanthia alexandra melkor* Korb, 2003. Holotype male, underside. **15.** *Athamanthia alexandra melkor* Korb, 2003. Holotype male, labels. **16.** *Albulina (Pamiria) ishatkala* Korb, 1997. Holotype male, upperside. **17.** *Albulina (Pamiria) ishatkala* Korb, 1997. Holotype male, underside. **18.** *Albulina (Pamiria) ishatkala* Korb, 1997. Holotype male, labels. **19.** *Agrodiaetus ishkashimicus alajanus* Korb, 1997. Holotype male, upperside. **20.** *Agrodiaetus ishkashimicus alajanus* Korb, 1997. Holotype male, underside. **21.** *Agrodiaetus ishkashimicus alajanus* Korb, 1997. Holotype male, labels.

- Albulina (Pamiria) tshatkala* Korb, 1997 (Figs 16–18). Korb, 1997: 436, fig. 3. Holotype ♂ (genitalia lost), '10.05.1990 Uzbekistan | Chatkalskaya valley | Kumbel, Beldersay valley | leg. G. A. Anufriev', 'HOLOTYPUS ♂ | *Albulina tshatkala* sp.n. | S. K. Korb design. 1996'
- Agrodiaetus ishkashimicus alajanus* Korb, 1997 (Figs 19–21). Korb, 1997: 434–436, figs 1, 2. Holotype ♂, '24.07.1991 Kirghizia | Alayski Mts. | Alaikuu | leg. G. A. Anufriev', '24.07.[19]91 | п. Алайку' [24.07.1991, Alaikuu] (Y. Kosarev's handwriting), 'HOLOTYPUS ♂ | *Polyommatus ishkashimicus* | *alajanus* Korb, ssp.n. | S. K. Korb design. 1996'.

References

- Korb, S. K. 1997. Two new taxa of Lycaenidae from Middle Asia (Lepidoptera). – *Lambillionea* **97**: 434–436.
- Korb, S. K. 2003. Notes sur la systématique et la repartition des Lycènes paléarctiques (III) (Lepidoptera Lycaenidae). – *Bulletin de la Société Entomologique de Mulhouse* **59**: 46–48.
- Korb, S. K. 2004. Eine neue *Colias*-Unterart und eine neue *Paralasa*-Art aus Kirgisien (Lepidoptera Pieridae und Nymphalidae). – *Alexanor* **23**: 115–118.
- Korb, S. K. 2009a. Une nouvelle sous-espèce de *Paralasa jordana* (Staudinger, 1882) des monts Transalaï (Kirghizie). – *Alexanor* **23**: 146–148.
- Korb, S. K. 2009b. Une nouvelle sous-espèce de *Maculinea alcon* de Bouriatie: *Maculinea alcon aulendil* ssp. n. (Lepidoptera Lycaenidae). – *Alexanor* **23**: 133–134.
- Korb, S. K. 2009c. Deux nouvelles sous-espèces kirghizes de *Polyommatus kirgizorum* Lukhtanov et Dantchenko, 1994 (Lepidoptera Lycaenidae). – *Alexanor* **23**: 214–216.

ZOBODAT - www.zobodat.at

Zoologisch-Botanische Datenbank/Zoological-Botanical Database

Digitale Literatur/Digital Literature

Zeitschrift/Journal: [Nota lepidopterologica](#)

Jahr/Year: 2011

Band/Volume: [34](#)

Autor(en)/Author(s): Korb Stanislav K.

Artikel/Article: [Relocation of primary types of butterflies \(Papilionoidea\) described by S. K. Korb in the Y. B. Kosarev collection 83-85](#)