

# Wing pattern morphology of three closely related *Melitaea* (Lepidoptera, Nymphalidae) species reveals highly inaccurate external morphology-based species identification

JURE JUGOVIC<sup>1,2</sup>, TONI KOREN<sup>2</sup>

1 University of Primorska, Faculty of mathematics, natural sciences and information technologies, SI-6000 Koper, Glagoljaška 8, Slovenia; [jure.jugovic@zrs.upr.si](mailto:jure.jugovic@zrs.upr.si)

2 University of Primorska, Science and Research Centre, Institute for Biodiversity Studies, SI-6310 Izola, Giordana Bruna 6, Slovenia; [koren.toni1@gmail.com](mailto:koren.toni1@gmail.com)

<http://zoobank.org/29B3CAE5-7E75-416E-9555-D85F2818BBA0>

Received 22 November 2013; accepted 5 May 2014; published: 15 June 2014

Subject Editor: Zdeněk F. Fric

**Abstract.** Wing morphology of the three closely related species of *Melitaea* – *M. athalia* (Rottemburg, 1775), *M. aurelia* (Nickerl, 1850) and *M. britomartis* Assmann, 1847 – co-occurring in the Balkans (SE Europe) was investigated in detail through visual inspection, morphometric analysis and multivariate statistical analysis. Results are compared to recent phylogenetic studies, searching for concordant patterns and discrepancies between the two approaches. The morphology of the genitalic structures is also compared with the results of the other two approaches. The main conclusions are as follows: (1) small albeit significant differences in wing morphology exist among the three species and (2) while the structure of male genitalia and phylogenetic position of the three species are concordant, they are (3) in discordance with the wing morphology. The present study represents another example where identification based on external morphology would lead to highly unreliable determinations, hence identification based on phylogenetic studies and/or genitalia is strongly recommended not only for the three studied species but also more broadly within the genus. Furthermore, we show that some of the characters generally used in the identification of these three *Melitaea* species should be avoided in future.

## Introduction

The genus *Melitaea* Fabricius, 1807 (Lepidoptera: Nymphalidae) as it is known today (Leneveu et al. 2009), comprises approximately 80 species, all restricted to the Palaearctic region. A recent phylogenetic analysis showed that the genus can be divided into two clades ('*Melitaea* clade' and '*Didymaeformia* clade') with high branch support from both maximum likelihood and Bayesian analyses (Leneveu et al. 2009). Within the '*Melitaea* clade' five subclades have been recognized (*sensu* Leneveu et al. 2009): '*cinxia*', '*diamina*', '*arcesia*', '*minerva*' and '*athalia*' groups. The latter subclade comprises fourteen species, three of which are present in the area of north-western Balkans: *Melitaea athalia* (Rottemburg, 1775), *Melitaea aurelia* (Nickerl, 1850) and *Melitaea britomartis* Assmann, 1847. These three species belong to two different monophyletic groups within the subclade '*athalia*', one comprising *M. aurelia* and five other species, and the other *M. athalia*, *M. britomartis* and six other species (Leneveu et al. 2009). The split between the latter two monophyletic groups has been estimated to have

occurred about 11 million years ago (Serravallian period) while the subsequent speciation occurred during the Messinian Period (5.3–7.1 Mya) (Leneveu et al. 2009), when the continuous decrease of temperature coincided with the aridification of the climate in Eurasia and a subsequent expansion of grassland of C4 plants (e.g. Maki et al. 2003; Quade et al. 1995). Although the separate evolution of those species has been in progress for a long period of time, the clear genetic differentiation (Bátori et al. 2012a) is not reflected in their external morphology (Tolman & Lewington 2008).

The external morphology of the three species is highly similar, rendering the accurate identification based on external morphology questionable (Tolman & Lewington 2008). There are several morphological characters that have been proposed for species identification of *M. athalia*, *M. aurelia* and *M. britomartis*: the coloration of the marginal line of the hindwing underside; the spacing of the marginal, submarginal, postdiscal and discal line on the forewing upperside; and the colour of the submarginal spots on the hindwing underside (Tolman & Lewington 2008). The high variability of those characters, however, sometimes prevents proper identification (Tolman & Lewington 2008). The genitalia of these species are highly species specific, and have been known to be a good identification tool (Urbahn 1952; Paulavičiūtė & Tamutis 2009). Nevertheless, even when genitalia based identification is used, only males can be unambiguously recognized to a species rank, whereas this is not always possible in females (e.g. see Urbahn 1952).

*Melitaea athalia* is a trans-European species (except for south-western Europe, where *Melitaea celadussa* Fruhstorfer, 1910, a former subspecies of *M. athalia* occurs (Leneveu et al. 2009)). *M. aurelia* and *M. britomartis* are absent from the majority of SW Europe (including the Iberian and Apennine peninsulas). *M. britomartis* is absent also from most of Central Europe being present only in eastern parts of Europe. A part of its distribution, however, reaches the NW Balkans – Slovenia, Croatia and Bosnia and Herzegovina (Koren & Jugovic 2012) – where these three species live in sympatry. In this area the distribution of *M. britomartis* is separated from the center of its distribution (Tolman & Lewington 2008).

The ecology of the three species in the area of NW Balkans (Slovenia) is similar in terms of flight period, altitudinal distribution and habitat requirements including foodplant (Koren & Jugovic 2012; Verovnik et al. 2012). Since their habitat requirements and foodplants partly overlap, they often occur in the same habitat (Bátori et al. 2012a; Koren & Jugovic 2012).

Morphological traits can reflect either historical isolation and/or local adaptation despite recurrent gene flow (Alexandrino et al. 2005). Some taxa remain morphologically unidentifiable despite detailed morphometric analysis, hence a consideration of a large set of morphometric characters from different anatomical regions may greatly increase the chances of revealing taxonomic differences within seemingly cryptic or morphologically highly variable species (e.g. Jugovic et al. 2011).

We wanted to check the concordance in the amount of morphological and genetic differences among the three closely related species. For this purpose a morphometric approach with subsequent multivariate statistical analysis was used in the *M. athalia* complex for the first time. We evaluated the following hypotheses: (1) the genetic divergence of the three species is accompanied by corresponding morphological differences exceeding the intra-species variability and (2) the level of accompanying morphological differences is concordant with the level

of molecular distance between the taxa, meaning that *M. aurelia* should be the most distant in morphological space from the other two species.

## Materials and methods

### Samples and species identification

Samples of the three species of *Melitaea* were collected over the last 40 years all over the NW Balkans (see Koren & Jugovic 2012 for the list). Altogether, samples from 56 localities were collected, sample sizes ranging from 1 to 12 for males and 1 to 3 for females. The genitalia of each specimen were isolated using the standard procedure for genitalia isolation (see Koren & Jugovic 2012 for details). Specimens were attributed to a species according to the genitalia structure that is highly species-specific in males (Urbahn 1952; Paulavičiūtė & Tamutis 2009). Using these methods we were able to identify all of the collected males. A total of 42 males and 24 females of *M. athalia*, 29 males and 6 females of *M. aurelia* and 24 males and 4 females of *M. britomartis* were used in further morphometric analysis.

Separation of these three species is possible using male genitalia as follows (see also Urbahn 1952): 1. uncus absent -> *M. aurelia*; 2. uncus present, long and slender, its processus longer than wide -> *M. athalia*; 3. uncus present, short and robust, its processus almost as long as wide -> *M. britomartis*. In females there are slight differences among the species, but not all specimens can be reliably identified in this way (Urbahn 1952; Bátori et al. 2012a).

### Morphometric methods

Specimens used in this study were mounted and photographed on a millimeter grid from the same angle (90°) using a DSLR camera (Canon 450D). Subsequently, 25 metric characters were measured from the photographs using freeware ImageJ (Abramoff et al. 2004), 14 on the forewing and 11 on the hindwing (Table 1, Fig. 1). The measurements included a wide range of morphometric characters (i.e. lengths, surfaces and angles between measured distances of different parts of both wings). Moreover, one categorical character, i.e. marginal line colour in contrast to lunular colour (for categories see Table 1 and Appendix A) was also recorded. In order to exclude the impact of the animal's size, all metric characters were transformed into 18 additional ratios (Table 1). The photographs of both wings were used for comparison and investigated in detail in order to find some other descriptive morphological species-specific characteristics and to describe intraspecific variability. Although no body asymmetry was detected, all characters were measured on the right side of an animal in order to exclude any possible influence of this phenomenon. The left side, however, was used in rare occasions when the right side was damaged.

### Statistical analysis

Since in our samples males were prevalent and not all females could be reliably identified to a species, females were excluded from subsequent statistical analyses. With this approach, we

**Table 1.** List of structures (with morphological characters, their explanation with measuring units) measured in three species of *Melitaea*.

No.	Character abbreviation	Description	Unit
	<b>Forewing</b>		
1	<i>FWS</i>	forewing surface	mm <sup>2</sup>
2	<i>FWCS</i>	forewing cell surface	mm <sup>2</sup>
3	<i>FWL1</i>	forewing length 1	mm
4	<i>FWL2</i>	forewing length 2	mm
5	<i>FWH</i>	forewing height	mm
6	$\alpha$	angle at forewing apex	°
7	A1	distance A1	mm
8	A2	distance A2	mm
9	A3	distance A3	mm
10	A4	distance A4	mm
11	<i>FWDS</i>	forewing dot surface	mm <sup>2</sup>
12	<i>FWLS</i>	forewing lunule surface	mm <sup>2</sup>
13	<i>FWLL</i>	forewing lunule length	mm
14	<i>FWLH</i>	forewing lunule height	mm
	<b>Hindwing</b>		
15	<i>HWS</i>	hindwing surface	mm <sup>2</sup>
16	<i>HWCS</i>	hindwing cell surface	mm <sup>2</sup>
17	<i>HWL1</i>	hindwing length 1	mm
18	<i>HWL2</i>	hindwing length 2	mm
19	<i>HWL3</i>	hindwing length 3	mm
20	$\beta$	angle at hindwing apex	°
21	B1	distance B1	mm
22	B2	distance B2	mm
23	<i>HWLS</i>	hindwing lunule surface	mm <sup>2</sup>
24	<i>HWLL</i>	hindwing lunule length	mm
25	<i>HWLH</i>	hindwing lunule height	mm
	<b>Categorical character</b>		
26	Marginal line colour in contrast to lunular colour	(1=equal; 1.5=slightly darker; 2=darker; 3=much darker)	
	<b>Ratios</b>		
27	<i>FWCS/FWS</i>		
28	<i>FWL2/FWL1</i>		
29	<i>FWH/FWL1</i>		
30	A2/A1		
31	A3/A1		
32	<i>FWDS/FWCS</i>		
33	<i>FWDS/FWS</i>		
34	<i>FWLH/FWLL</i>		
35	<i>FWLS/FWS</i>		
36	<i>FWLS/FWCS</i>		
37	$\beta / \alpha$		
38	<i>HWCS/HWS</i>		
39	<i>HWL1/HWL2</i>		
40	<i>HWL3/HWL1</i>		
41	B2/B1		
42	<i>HWLS/HWS</i>		
43	<i>HWLS/HWCS</i>		
44	<i>HWLH/HWLL</i>		





Multivariate Principal Component Analysis (PCA) was used to identify the structure of our data i.e. to detect the possible influence of the species specific characteristics. Also, Discriminant Function Analysis (DFA) was carried out to examine possible separation of the three species. In DFA, the contribution of each species was weighted according to its sample size (number of specimens). Post-hoc Games-Howell and Bonferonni tests were performed to assess the rates of morphological divergences between pairs of species in details. The analyses were performed using Microsoft Excell (2010), SPSS 14.0 for Windows (2005) (Norusis, 2005) and Past (PAlaeontological STatistics) software (Hammer et al. 2001).

## Results

The multivariate analysis of variance (MANOVA) showed significant differences between species ( $p < 0.001$ ). Out of 43 morphometric characters, 12 characters (without a single ratio) were selected after Kolmogorov-Smirnov ( $p < 0.05$ ), ANOVA ( $p < 0.001$ ) and Pearson correlation ( $|r| < 0.9$ ) tests. No spatial or temporal autocorrelation was detected in these characters neither at  $p = 0.01$  nor at  $p = 0.05$  (Durbin-Watson test). Statistic description of selected 12 characters (mean, standard error, 12th percentile, 88th percentile and extreme values) is presented in Table 2. When the Pearson correlation test was set to  $|r| < 0.7$ , only two morphometric characters (forewing height [FWH] and distance A4) were left after step-wise exclusion of characters, meaning that correlations among most pairs of morphological characters were high.

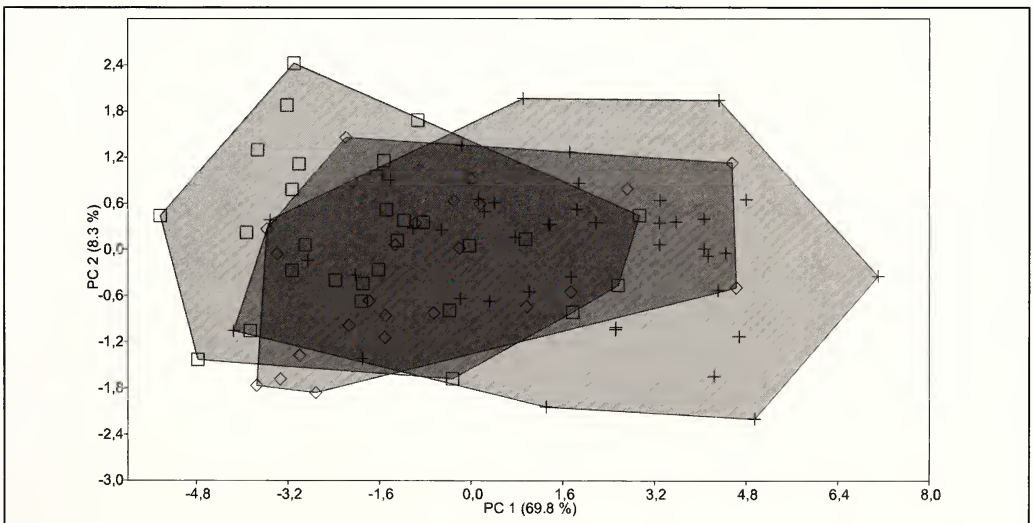
The principal result of the PCA (Fig. 2) run on 95 males from the NW Balkans, using 12 morphometric characters (Table 2), revealed a significant overlap of the three species along the first two principal components (PCs). PC 1 explained almost 70% of the total variance and PC2 explained an additional 8%. All characters are positively correlated to PC1, starting with the smallest *M. aurelia* and finishing with the largest of three species, *M. athalia*. Nevertheless, the overlap between the three species in the middle section along PC 1 is significant.

In the DFA (Fig. 3) run using the same morphometric characters as in the PCA, 95 males were analyzed to (1) provide adequate species-grouping according to external morphological characters and (2) detect intra-species variability of selected characters. Two Discriminant Functions (DFs) explain total variance, DF 1 explaining over 75% of the total variance. Species differ significantly only along DF 1 ( $p < 0.001$ ), and only *M. athalia* differs significantly from the other two species (Games-Howell Test,  $p < 0.001$ ). The characters most correlated with DF 1 (indicated by the standardized discriminant function coefficients:  $DC > 0.75$ , Table 3) are: forewing height (FWH), forewing lunule surface (FWLS), forewing lunule height (FWLH) and hindwing surface (HWS). For the differences among the three species in these four characters, see Fig. 4 and Table 2.

Although the DFA aims to find the differences between the *a priori* defined groups, the misclassification rates were high, especially when cross-validation process was employed (Fig. 5). Considering both DFs, only 67.4% specimens were correctly classified, and in the cross-validation procedure, the percentage dropped down to only 52.6% of correctly classified specimens. We then repeated DFA with the same twelve morphometric characters, adding the coloration of the marginal line in contrast to the lunular colour on the underside of the hindwing, not

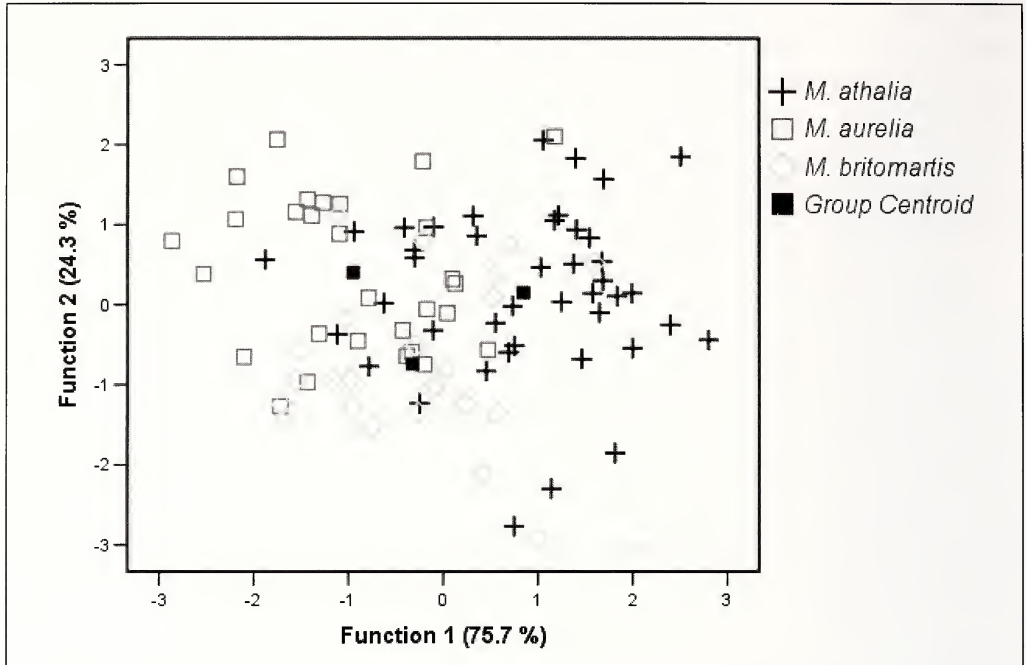
**Table 2.** Statistical description of twelve metric characters in males of three species of the genus *Melitaea* that were used in subsequent Principal component and Discriminant Function analyses. Upper row: average  $\pm$  std. error; lower row: (min), 12<sup>th</sup> percentile–88<sup>th</sup> percentile (max).

		<i>M. athalia</i>	<i>M. aurelia</i>	<i>M. britomartis</i>
forewing height	FWH	11.62 $\pm$ 0.15	10.25 $\pm$ 0.16	10.73 $\pm$ 0.17
		(9.27) 10.50–12.79 (13.56)	(8.93) 9.15–11.46 (12.23)	(9.19) 9.63–11.51 (12.78)
forewing lunule surface	FWLS	3.82 $\pm$ 0.10	2.82 $\pm$ 0.10	3.09 $\pm$ 0.18
		(2.01) 3.07–4.79 (4.98)	(1.82) 1.95–3.55 (4.21)	(1.74) 2.19–4.29 (5.28)
forewing lunule height	FWLH	1.69 $\pm$ 0.03	1.45 $\pm$ 0.03	1.56 $\pm$ 0.03
		(1.21) 1.50–1.99 (2.09)	(1.11) 1.24–1.61 (1.66)	(1.33) 1.36–1.76 (1.79)
hindwing surface	HWS	138.70 $\pm$ 4.60	109.55 $\pm$ 20.50	120.20 $\pm$ 4.40
		(96.40) 106.64–171.47 (181.71)	(81.09) 89.78–144.80 (153.48)	(93.94) 103.09–161.06 (170.21)
distance B1	B1	3.86 $\pm$ 0.09	3.21 $\pm$ 0.08	3.50 $\pm$ 0.09
		(2.76) 3.09–4.67 (5.10)	(2.39) 2.63–3.76 (4.06)	(2.63) 3.02–4.09 (4.57)
hindwing cell surface	HWCS	9.23 $\pm$ 0.24	7.61 $\pm$ 0.26	7.94 $\pm$ 0.26
		(6.39) 7.35–11.42 (12.66)	(5.17) 5.75–9.42 (10.85)	(6.30) 6.60–9.44 (12.16)
hindwing length l	HWL1	8.53 $\pm$ 0.14	7.54 $\pm$ 0.18	7.90 $\pm$ 0.16
		(6.48) 7.52–9.88 (10.15)	(5.58) 6.45–8.78 (10.20)	(6.44) 7.05–8.96 (9.40)
hindwing lunule surface	HWLS	4.29 $\pm$ 0.15	3.39 $\pm$ 0.14	3.58 $\pm$ 0.20
		(2.52) 3.14–5.32 (6.75)	(2.08) 2.65–4.57 (5.00)	(2.44) 2.53–4.82 (6.26)
hindwing lunule length	HWLL	2.48 $\pm$ 0.05	2.27 $\pm$ 0.05	2.20 $\pm$ 0.06
		(1.73) 2.02–2.85 (3.24)	(1.68) 1.95–2.62 (2.79)	(1.73) 1.81–2.49 (2.82)
hindwing lunule height	HWLH	1.95 $\pm$ 0.04	1.71 $\pm$ 0.03	1.80 $\pm$ 0.05
		(1.44) 1.69–2.34 (2.70)	(1.28) 1.48–1.93 (2.16)	(1.46) 1.55–2.08 (2.33)
distance A4	A4	1.84 $\pm$ 0.05	1.59 $\pm$ 0.05	1.59 $\pm$ 0.05
		(1.09) 1.39–2.14 (2.49)	(1.11) 1.32–1.92 (2.18)	(1.13) 1.30–1.83 (2.01)
forewing lunule length	FWLL	2.46 $\pm$ 0.05	2.13 $\pm$ 0.05	2.19 $\pm$ 0.09
		(1.63) 1.98–2.80 (3.04)	(1.52) 1.83–2.40 (2.56)	(1.56) 1.59–2.75 (3.32)



**Figure 2.** Two-dimensional plot (PC 1 vs. PC 2) generated from Principal Component Analysis (PCA) run on 95 males of three *Melitaea* species using twelve metric characters (see Table 2). Legend: crosses: *M. athalia*; diamonds: *M. britomartis*; squares: *M. aurelia*.





**Figure 3.** Plot of the scores of 95 males of three species of *Melitaea* on both discriminant functions, using 12 morphometric characters. Centroids are larger and darker than symbols denoting individual specimens.

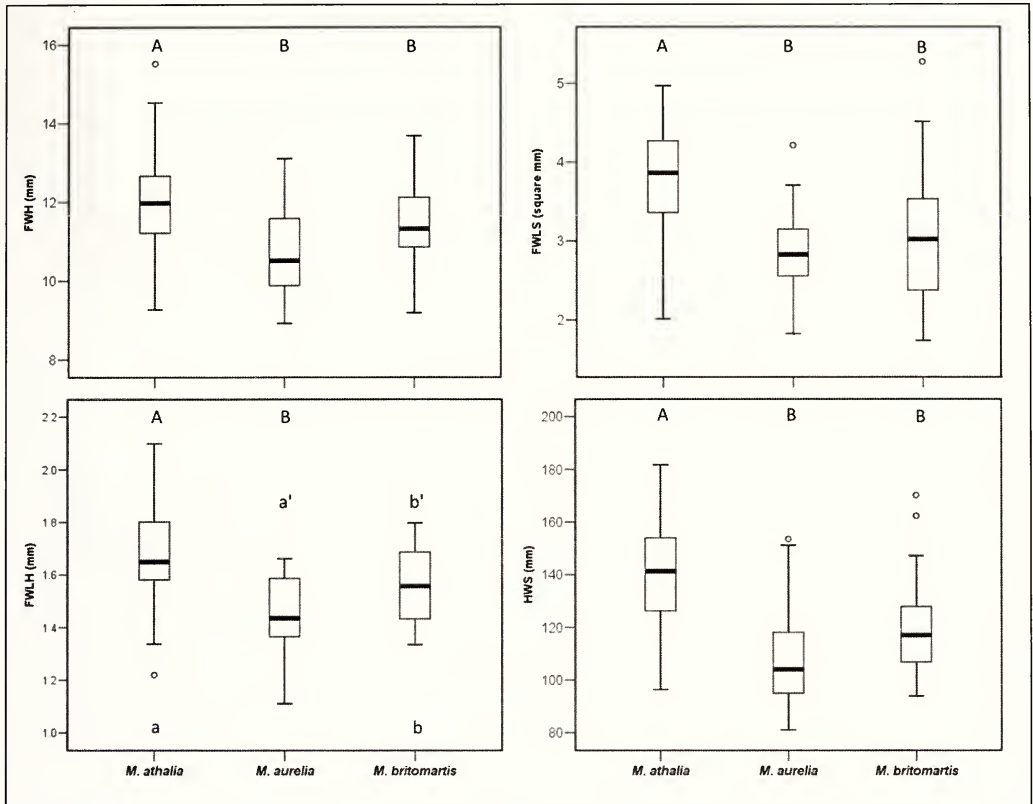
**Table 3.** Contributions of 12 metric characters (MC) to discrimination along both discriminant functions (DF). Discriminant function analysis run on 95 males of three species of *Melitaea*. Asterisk (\*) denotes the highest absolute correlation between the character and DF.

MC	(symbol)	DF 1	DF 2
forewing height	(FWH)	0.851*	-0.002
forewing lunule surface	(FWLS)	0.810*	0.110
forewing lunule height	(FWLH)	0.791*	-0.129
hindwing surface	(HWS)	0.787*	-0.022
distance B1	(B1)	0.680*	-0.120
hindwing cell surface	(HWCS)	0.651*	0.158
hindwing length 1	(HWL1)	0.624*	-0.013
hindwing lunule surface	(HWLS)	0.575*	0.128
forewing lunule length	(FWLL)	0.571*	0.147
hindwing lunule height	(HWLH)	0.562*	-0.032
distance A4	(A4)	0.533*	0.285
hindwing lunule length	(HWLL)	0.455	0.476*

considering that this character was deviating from normal distribution (Kolmogorov-Smirnov test, all data pooled:  $Z = 2.642$ ;  $p < 0.001$ ). However, this did not improve the classification significantly (original grouping: 70.5%; cross-validation procedure: 55.8%).

In addition to the characters used in the DFA, two characters frequently mentioned in the literature as diagnostic for the recognition of (some of) *Melitaea* species should be mentioned.

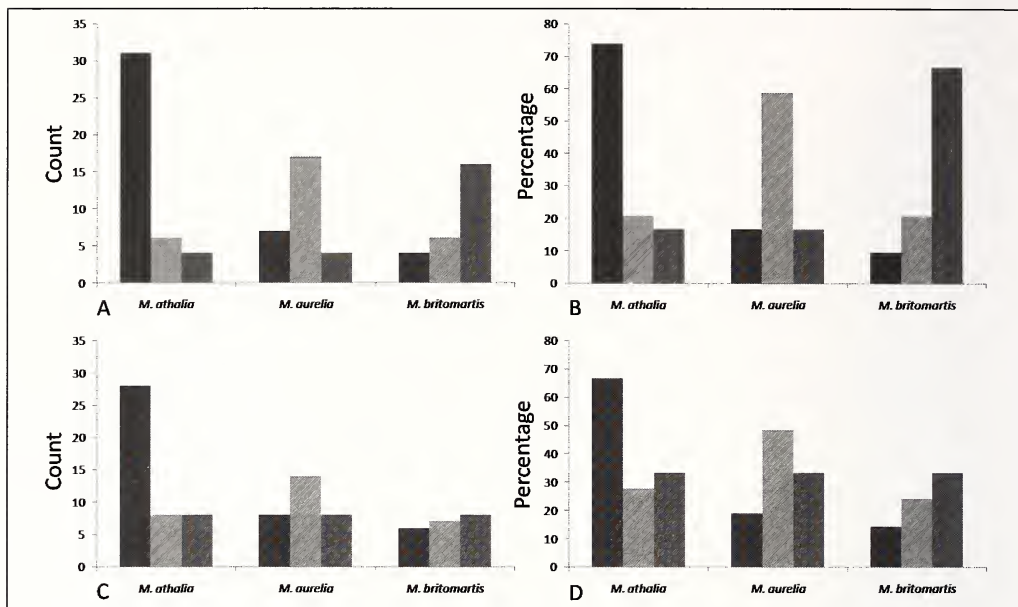




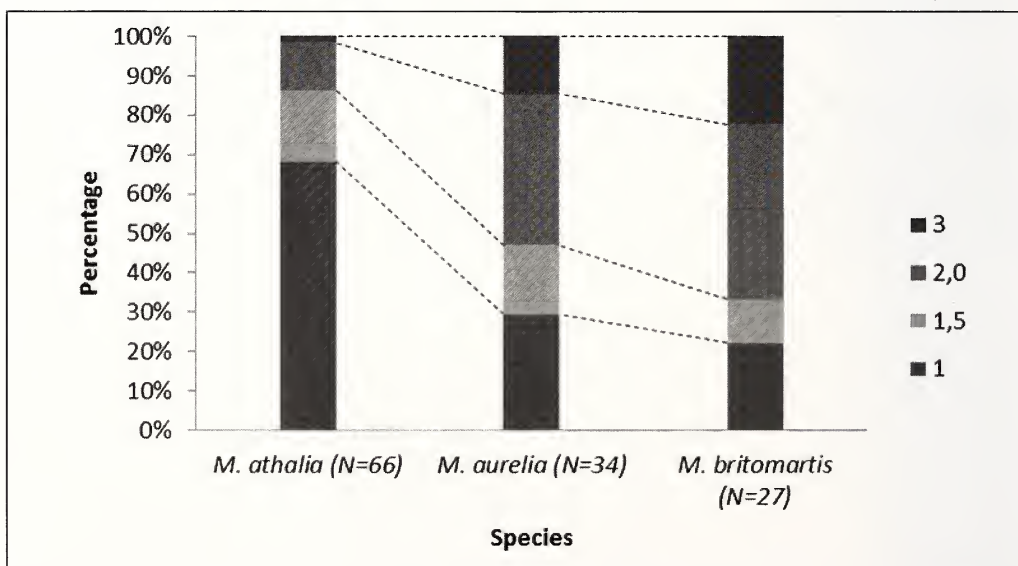
**Figure 4.** Variation in four morphometric characters in *M. athalia*, *M. aurelia* and *M. britomartis*: forewing height (FWH), forewing lunule surface (FWLS), forewing lunule height (FWLH) and hindwing surface (HWS). Statistically significant differences between pairs of species (Bonferroni test) are shown with capital ( $p < 0.001$ ) and small ( $0.001 < p < 0.05$ ) letters. When only a trend in differences between species is shown ( $0.05 < p < 0.1$ ), small letters with apostrophe are used.

For the characters like the spacing of the marginal, submarginal, postdiscal and discal line on the forewing upperside, the colour of the submarginal spots on the hindwing underside, the coloration of hairs on the palps as well as that of the marginal line in contrast to the lunular colour on the underside of the hindwing, no consistency with species attribution was found in our examination. For the latter, slight differences were found between the three species; however, species could not be identified with certainty using the lunular coloration on the hindwing underside due to the high intraspecific variability of this character. The coloration of the marginal line is in general equal to the coloration of the lunules in *M. athalia*, much darker in *M. britomartis* and only slightly darker in *M. aurelia*. Nevertheless, all of these categories were noticed in each species (Fig. 6, Appendix B).

The wing pattern and coloration show high intra- and interspecific variability. While in some species dark melanistic forms are common (e.g. in *Melitaea britomartis* ssp. *michieli* from Slovenian Karst and surroundings (Carnelutti 1992)), other peculiar forms also had been found. In some of these, the pattern deviated from normal form so much so that in these animals some



**Figure 5.** DFA classification results of 95 males of *Melitaea athalia* (first column), *M. aurelia* (second column) and *M. britomartis* (third column); A, B – original; C, D – cross-validation procedure.



**Figure 6.** Colour categories of marginal line colour in contrast to lunular colour on underside of hindwing of three *Melitaea* species (1=equal; 1.5=slightly darker; 2=darker; 3=much darker).

metric characters could not be measured. We found three such *M. athalia* specimens (i.e. with extremely reduced markings) from Kamniški Vrh and Smrekovec (both in Slovenia) and Vu-grovec (Croatia).

## Discussion

The genitalia structures (Urbahn 1952) and the phylogeny based on three genes (mitochondrial gene cytochrome oxidase subunit I, and two nuclear genes, elongation factor-1 $\alpha$ , and wingless; Leneveu et al. 2009) of the three *Melitaea* species are in agreement, clearly showing that *M. aurelia* is more distant from the other two species. In our analysis this is proved by a genitalia based species identification of males without any questionable cases. However, the phylogenetic relationships and the differences in the genitalia morphology are not reflected in the external morphology of the three species' wing patterns.

All analysis conducted in this study indicates the important differences among the three species in the size of most of the measured characters, however, only in average values. Due to high variability of these characters, the clinal variation among species has been noticed (see the results of multivariate analyses). According to literature (e.g. Tolman & Lewington 2008), *M. athalia* is indeed the largest of the three species, with forewing height (FWH, Table 2, Fig. 4) being the most obvious character reflecting the difference in size from our study. Without exception, all measured characters had the smallest average values in *M. aurelia* on one side of the clinal variation and the largest in *M. athalia* on the other. High correlations among most of the characters show the stability of their wing shape, which can therefore be represented by a subset of all the characters. The wing shape stability is also supported by the exclusion of all ratios (that partly exclude the size impact and describe the wing shape) in ANOVA tests. In order to minimize the number of highly correlated characters, only one character was chosen from a pair or group of highly correlated characters. This goal was only partially achieved as further stepwise removal of characters (with Pearson correlation coefficients  $0.7 < |r| < 0.9$ ) would result in only two weakly correlated remaining characters ( $|r| < 0.7$ ) and prevent the implementation of the multivariate analyses. Although the differences are small, *M. athalia* is the most distant from the other two in a powerful discriminant function analysis. All except one character that were included in the multivariate statistical analyses significantly separate *M. athalia* from the other two, and only slight differences in just one (out of 43) metric character (forewing lunule height, FWLH; ANOVA:  $0.05 < p < 0.1$ ) between *M. aurelia* and *M. britomartis* were shown. Although the differences are small, this further supports the discrepancies between the external morphology and phylogenetic results (sensu Leneveu et al. 2009). Considering the phylogenetic position of the three species, *M. athalia* should resemble *M. britomartis* more than *M. aurelia* but in our analysis the latter two were clustered more closely together. According to the phylogenetic data, the first split within the 'athalia' group that separated the clade containing *M. aurelia* from the clade containing the two other species occurred in the Tortorian period (approximately 11 MYA) and the later split from which also *M. athalia* and *M. britomartis* emerged happened during Messinian period (approximately 7.1 – 5.3 MYA; Leneveu et al. 2009). Hence, the three lineages that emerged – *M. athalia*, *M. aurelia* and *M. britomartis* – underwent at least 5 million years of separate evolution. Despite such a long time of separation, no obvious external morphological differences have evolved. This is somewhat surprising when compared to the situation in some of their close relatives. For example, clear differences in external morphology have emerged in some species of *Melitaea*, although they have become separate evolutionary lineages more recently than *M. athalia*, *M. aurelia* and *M. britomartis* (e.g. *M.*



*asteria*–*M. aurelia*, also within the same ‘*athalia*’ group; Tolman & Lewington 2008; Leneveu et al. 2009).

The allozyme polymorphism of these three species was studied in samples from the Carpathian basin, and revealed that *M. britomartis* and *M. aurelia* are more closely related, while *M. athalia* appears to be a further relative (Bátori et al. 2012a). This result contradicts the phylogenetic analysis of Leneveu et al. (2009). The latter analysis, however, finds support also in the genitalia structures as follows: in males of *M. athalia* and *M. britomartis*, the spines on the uncus are well developed, whereas they are completely absent in *M. aurelia* (Urbahn 1952). It should not be a surprise that the level of differentiation in genitalic structures corresponds to the phylogenetic position of the species since sexual differentiation usually represents one of the most rapid and obvious taxon-specific events during speciation in many animal groups, invertebrates in particular (Mayr & Ashlock 1991). In addition, the genitalic structures are in comparison to the external morphology less subjected to environmental factors (Cesaroni et al. 1994; Dapporto et al. 2011). For example, *M. celadussa*, recently elevated to a species level by Leneveu et al. (2009) from a subspecies rank of *M. athalia*, has not yet been reliably recognized on the basis of wing pattern and coloration, whereas some differences from *M. athalia* were found in male genitalia alone (e.g. see Higgins & Riley 1978; Leneveu et al. 2009). As long as external differences are not found, this species pair could be treated as cryptic (*sensu* Hawksworth 2010: “populations which are phylogenetically distinct, but distinguished by molecular or other features that are either not evident macroscopically or generally overlooked”).

In contrast to the allozyme study, the phylogenetic analysis used as a framework for the explanation of our results (Leneveu et al. 2009) (1) included a vast majority of known species of *Melitaea* (whereas in Bátori et al. 2012a only *M. athalia*, *M. aurelia* and *M. britomartis* were included) and (2) three different genes provided support for the same topology within the ‘*athalia*’ group discussed herein. Hence, no serious consideration was given to the study of Bátori et al. (2012a).

No external characters were proven to be reliable for species delimitation even though the coloration of the marginal line of the hindwing underside shows the trend towards the correct identification. Although the majority of specimens correspond to the character states given in literature for a particular species, all three presumably species-specific categories of this character (Tolman & Lewington 2008) used in our analysis were present in each of the three species. Moreover, the percentage of misidentifications when this is the only character used would be very high (see Fig. 6). Other external characters suggested in literature (see Introduction) show even higher rates of variability, and no species-specific correspondence was found. Even when the twelve (out of 43, see Tables 1 and 2) most powerful characters are simultaneously used (see results of the DFA, Fig. 2) the misidentification rate reaches almost 50% in the cross-validation procedure (Fig. 5), rendering the appropriate identification of these species highly unreliable. To further support the high morphological variability within a single *Melitaea* species, as an example we should mention a comparison of populations of *M. athalia* from the Caucasian basin (Bátori et al. 2012b), where small, albeit significant differences in wing morphology were found among some of them (all contributing to a high intraspecies variability). Although partly reflecting the molecular differences between



the populations, these differences cannot be assigned to a genetic background alone. They rather may through selection also be a result of an adaptation to local conditions (Bátori et al. 2012b), such as food availability, climate and microhabitat selection. This phenomenon is not uncommon since high levels of phenotypic plasticity are important for a response that ensures the survival of a population exposed to unstable environmental factors (Shapiro 1976; Brakefield & French 1999). High species plasticity together with accommodation to local conditions can in practice result in description of many subspecies and morphological forms within *M. athalia* as well as within some other *Melitaea* species. Nonetheless, the differences among populations in reality might have resulted from locally specific selection pressure (e.g. see Tolman & Lewington 2008). On the other hand, the three species exploit similar (and partly overlapping) resources (e.g. see Verovnik et al. 2012; Koren and Jugovic 2012), which is probably the reason for the high similarity among them. It is important to note that the regional pattern of differentiation in *M. athalia* from the Caucasian basin was less expressed in genitalia than in wing characters (Bátori et al. 2012b).

The high variability of these species is further shown in their qualitative characters, for example in wing pattern and coloration. In *M. athalia* three out of more than 120 sampled specimens had a very peculiar coloration, with no visible marginal lines. Albeit unrecognized, we believe that differences in (some of) local conditions clearly show the importance of environmental factors for the wing morphology. This further demonstrates the importance of genitalia or phylogeny based identification in the herein investigated *Melitaea* species. Moreover, the latter two approaches should have a significant advantage also for the identification of (some) other species of the genus that should undergo thorough revision in the future (cf. Leneveu et al. 2009).

## Conclusions

The morphometric analysis of three closely related *Melitaea* species (*M. athalia*, *M. aurelia* and *M. britomartis*) revealed the following: (1) small albeit significant differences in wing morphology exist among the three species; (2) only characters describing the size of the species with no characters describing their wing shapes (ratios) were statistically important for the separation of the species; (3) whereas the structure of the male genitalia and the phylogenetic position of the three species are concordant, the sequence of phylogenetic splits is not reflected in the rate of external morphological differences among them; (4) our study represents another example where external morphology based identification would lead to highly unreliable determinations, hence a use of genitalia based identifications is strongly recommended.

## Acknowledgements

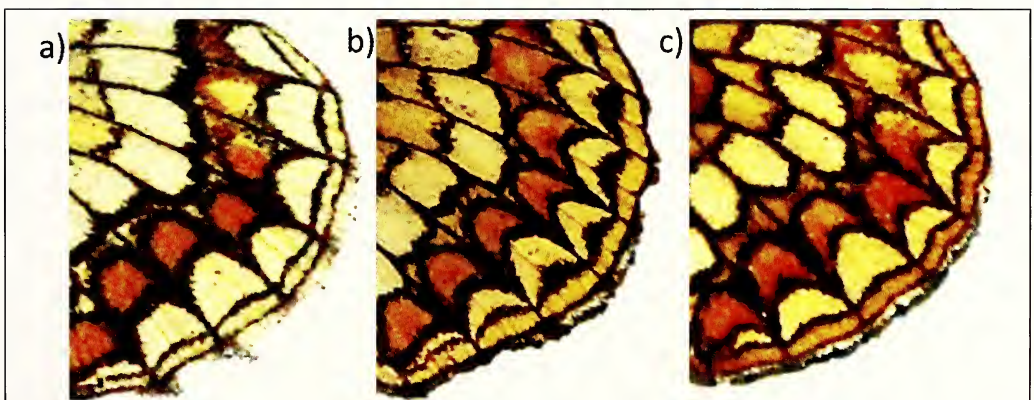
We are grateful to Ivan Jugovic (Kranj, Slovenia) for data from his collection, useful discussion and help in identification. We also thank Barbara Zakšek (Voličina, Slovenia) for providing us with the literature on genitalia preparation, and Elena Varljen Bužan (Koper, Slovenia) for valuable comments regarding the molecular background. We are thankful to Roman Luštrik (Ljubljana, Slovenia) for valuable help with statistical analysis. The referees and the editor contributed greatly to the improvement of the manuscript.

## References

- Abramoff MD, Magalhaes PJ, Ram SJ (2004) Image Processing with ImageJ. *Biophotonics International* 11 (7): 36–42.
- Alexandrino J, Ferrand N, Arntzen JW (2005) Morphological variation in two genetically distinct groups of the golden-striped salamander, *Chioglossa lusitanica* (Amphibia: Urodela). *Contributions to Zoology* 74 (3/4): 213–222.
- Bátori E, Pecsénye K, Bereczki J, Varga Z (2012a) Patterns of genetic and taxonomic differentiation in three *Melitaea* (subg. *Mellicta*) species (Lepidoptera, Nymphalidae, Nymphalinae). *Journal of Insect Conservation* 16 (5): 647–656. DOI: 10.1007/s10841–011–9447–y
- Bátori E, Pecsénye K, Tóth JP, Varga Z (2012b) Patterns of genetic and morphometric differentiation in *Melitaea* (*Mellicta*) *athalia* (Lepidoptera: Nymphalidae). *Biological Journal of the Linnean Society* 107: 398–413.
- Brakefield PM, French V (1999) Butterfly wings: the evolution of development of colour patterns. *Bioessays* 21: 391–401.
- Carnelutti J (1992) Metulji Kraškega roba. *Proteus* 54 (6–7): 254–259.
- Cesaroni D, Lucarelli M, Allori P, Russo F, Sbordoni V (1994) Patterns of evolution and multidimensional systematics in graylings (Lepidoptera: *Hipparchia*). *Biological Journal of the Linnean Society* 52: 101–119. doi: 10.1111/j.1095-8312.1994.tb00982.x
- Dapporto L, Schmitt T, Vila R, Scalercio S, Biermann H, Dinca V, Gayubo SF, González JA, Lo Cascio P, Dennis RLH (2011) Phylogenetic island disequilibrium: evidence for ongoing long-term population dynamics in two Mediterranean butterflies. *Journal of Biogeography* 38: 854–867. doi: 10.1111/j.1365-2699.2010.02452.x
- Farebrother RW (1980) Algorithm AS 153: Pan's procedure for the tail probabilities of the Durbin-Watson statistic. *Journal of the Royal Statistical Society, Series C* 29 (2): 224–227.
- Hammer Ø, Harper DAT, Ryan PD (2001) PAST: Paleontological statistics software package for education and data analysis. *Palaeontologia Electronica* 4 (1): 9 pp. ([http://palaeo-electronica.org/2001\\_1/past/issue1\\_01.htm](http://palaeo-electronica.org/2001_1/past/issue1_01.htm))
- Hawksworth DL (2010) Cryptic speciation: how common is it and how should it be handled taxonomically? [imc9.info/prog\\_sig3\\_detail\\_hawksworth.htm](http://imc9.info/prog_sig3_detail_hawksworth.htm) (date of access: 10th December 2012).
- Higgins LG (1950) A descriptive catalogue of the Palaearctic *Euphydryas* (Lepidoptera: Rhopalocera). *Transactions of the Royal Entomological Society of London* 101: 435–489. doi: 10.1111/j.1365-2311.1950.tb00745.x
- Higgins LG, Riley ND (1978) *Die Tagfalter Europas und Nordwestafrikas*. Paul Parey, Hamburg, Berlin. 377 pp.
- Higgins LG, Riley ND (1980) *A field guide to the butterflies of Britain and Europe*. 4th ed. Collins, London. 384 pp., 63 pls.
- Jugovic J, Prevorčnik S, Blejec A, Sket B (2011) Morphological differentiation in the cave shrimps *Troglocaris* (Crustacea: Decapoda: Atyidae) of the Dinaric karst – a consequence of geographical isolation or adaptation? *Journal of Zoological Systematics and Evolutionary Research* 49 (3): 185–195. doi: 10.1111/j.1439-0469.2010.00611.x
- Koren T, Jugovic J (2012) New data on the presence of three similar species of the genus *Melitaea*: *M. athalia*, *M. aurelia* and *M. britomartis* (Lepidoptera: Nymphalidae) in the North-Western Balkans. *Annales Series Historia Naturalis* 22 (1): 25–34
- Leneveu J, Chichvarkhin A, Wahlberg N (2009) Varying rates of diversification in the genus *Melitaea* (Lepidoptera: Nymphalidae) during the past 20 million years. *Biological Journal of the Linnean Society* 97: 346–361. doi: 10.1111/j.1095-8312.2009.01208.x
- Maki T, Hase Y, Kawamuro K, Minoura K, Oda T, Miyoshi N (2003) Vegetation changes in the Baikal region during the Late Miocene based on pollen analysis of BDP-98-2 Core. *Long Continental Records from Lake Baikal*. Springer, 123–137.
- Mayr E, Ashlock PD (1991) *Principles of systematic zoology*. McGraw-Hill, 2nd ed. New York (etc.), 54–74.

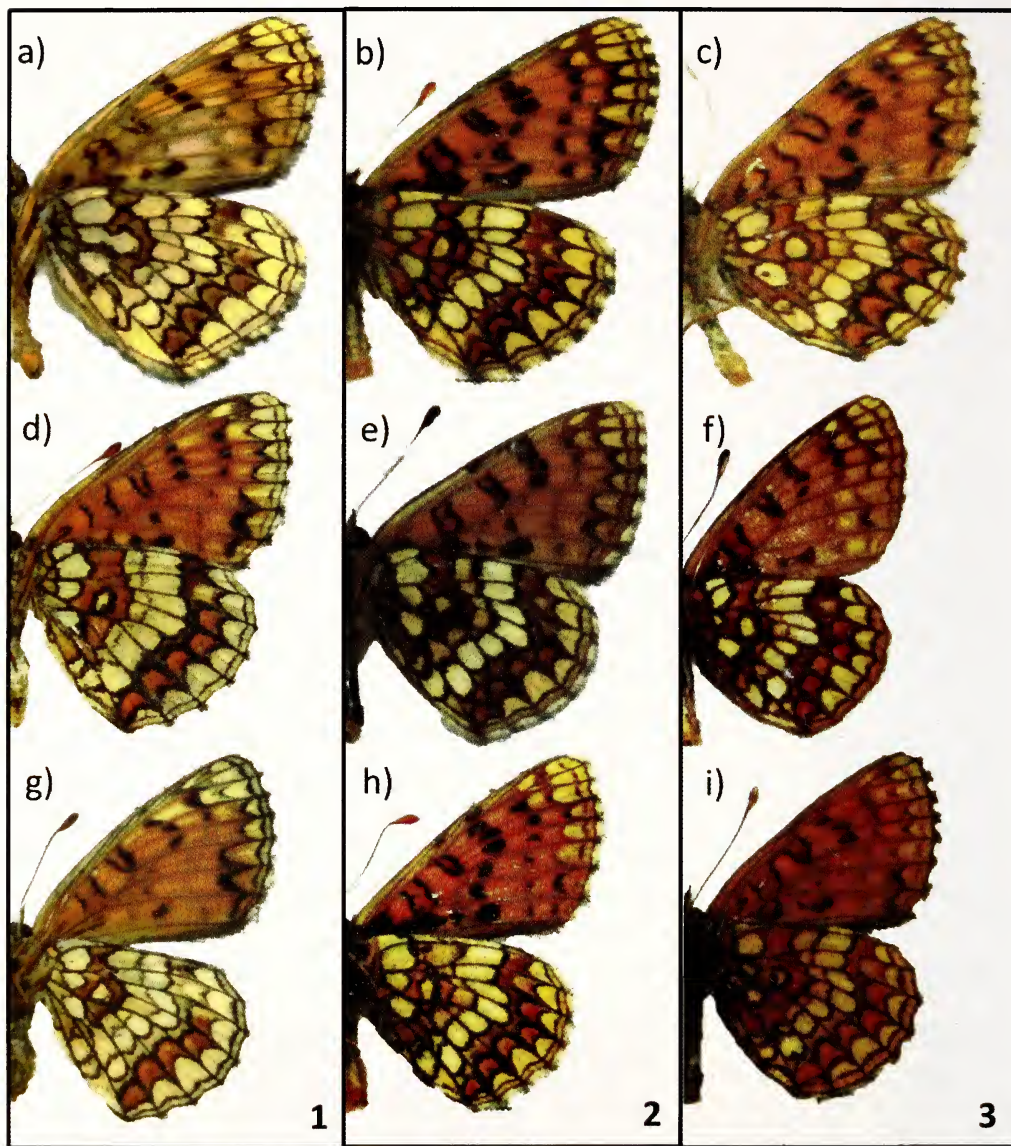
- Norusis M (2005) SPSS 14.0 Advanced Statistical Procedures Companion, Prentice-Hall, Inc., Upper Saddle River, NJ.
- Paulavičiūtė B, Tamutis V (2009) *Melitaea* (Nymphalidae) species from collections of T. Ivanauskas Zoological Museum. Acta Zoologica Lituanica 19 (4): 314–317. doi: 10.2478/v10043-009-0039-y
- Quade J, Cater JML, Ojha TP, Adam J, Harrison TM (1995) Late Miocene environmental change in Nepal and the northern Indian subcontinent; stable isotopic evidence from Paleosols. Geological Society of America Bulletin 107: 1381–1397. doi: 10.1130/0016-7606(1995)107<1381:LMECIN>2.3.CO;2
- Savin NE, White KJ (1977) The Durbin-Watson test for serial correlation with extreme sample sizes or many regressors. Econometrica 45: 1989–1996. doi: 10.2307/1914122
- Schluter D (2000) The ecology of adaptive radiation. Oxford Univ. Press, Oxford, New York. 296 pp.
- Shapiro AM (1976) Seasonal polyphenism. Journal of Evolutionary Biology 9: 259–333.
- Tolman T, Lewington R (2008) Collins Butterfly Guide. HarperCollins Publishers Ltd., London. 384 pp.
- Urbahn E (1952) Die Unterschiede der Jugendstände und Falter von *Melitaea athalia* Rott., *britomartis* Assm. und *parthenie* Bkh. = *aurelia* Nick. in Deutschland (Lep.). Zeitschrift der Wiener Entomologischen Gesellschaft 37 (7/8): 105–121.
- Van Swaay CAM, Warren MS (1999) Red Data Book of European Butterflies (Rhopalocera). Nature and Environment No. 99, Council of Europe Publishing, Strasbourg.
- Van Swaay C, Cuttelod A, Collins S, Maes D, Lopez Munguira M, Šašić M, Settele J, Verovnik R, Verstrael T, Warren M, Wiemers M, Wynhof I (2010) European Red List of Butterflies. Luxembourg: Publications Office of the European Union.
- Verovnik R, Rebeušek F, Jež M (2012) Atlas dnevnih metuljev (Lepidoptera: Rhopalocera) Slovenije. Atlas of Butterflies (Lepidoptera: Rhopalocera) of Slovenia. Center za kartografijo favne in flore, Miklavž na Dravskem polju. 456 pp.

## Appendices



**Appendix A.** Three categories of marginal line colour in contrast to lunular colour: 1=equal (a); 2=darker (b); 3=much darker (c) were used. In some cases when decision between categories 1 and 2 was hard (i.e. when the two authors disagree on whether the category should be assigned to category 1 or 2), value 1.5 was used.





**Appendix B.** Representatives of three categories of marginal line colour in contrast to lunular colour (categories 1, 2, 3) in *Melitaea athalia* (a–c), *M. aurelia* (d–f) and *M. britomartis* (g–i).



# ZOBODAT - [www.zobodat.at](http://www.zobodat.at)

Zoologisch-Botanische Datenbank/Zoological-Botanical Database

Digitale Literatur/Digital Literature

Zeitschrift/Journal: [Nota lepidopterologica](#)

Jahr/Year: 2014

Band/Volume: [37](#)

Autor(en)/Author(s): Jugovic Jure, Koren Toni

Artikel/Article: [Wing pattern morphology of three closely related Melitaea \(Lepidoptera, Nymphalidae\) species reveals highly inaccurate external morphology-based species identification 75-90](#)