

Description of *Mimcochylis* gen. n. with four new species (Tortricidae)

Józef RAZOWSKI

Institute of Systematic and Experimental Zoology, Polish Academy of Sciences
Sławkowska 17, 31-016 Kraków, Poland.

A new Neotropical Cochylidii genus and its four species are described from Mexico. The holotypes of all species are deposited in the collection of the University of California, Berkeley. The author expresses his thanks to Prof. Dr. Jerry A. POWELL of that university for providing the material for study.

Mimcochylis gen. n.

Type species : *M. planola* sp. n.

The new genus is described on the basis of the following supposed autapomorphies : top of tegumen with three small prominences ; median prominence on dorsal surface of tegumen, subapically ; accessory bursa ventrally at base of ductus bursae, directed distally. Other characters are as follows : tegumen broad, membranous laterally except for base and apical third ; vinculum divided into two arms ; transtilla with simple median process ; juxta short, expanding laterally ; valva broad, short, with differentiated, slender costal portion ; caulis anterior ; ovipositor elongate, semitelescopical ; apophyses long ; ductus seminalis from membranous corpus bursae, subdorsally ; anterior edge of sterigma concave or deeply incised medially.

Mimcochylis belongs to the *Cochylis* TREIT. group of genera, as one can judge from the position of the accessory bursa extending dorsally from the antrum area, setose lateral bands in distal portion of sterigma and sack-shaped membrane proximally. Externally the species of *Mimcochylis* resemble those of *Cochylis* TREIT. and *Falseuncaria* OBR. & SWATSCH.

The new genus is known from the northern part of the Neotropical Region to this date, and probably is Sonoran in distribution.

Mimcochylis planola sp. n.

Alar expanse, 13 mm. Labial palpus 1, pale brownish grey, remaining parts of head and thorax ash grey except for the middle of the latter,

which is blackish-grey. Forewing slightly broader terminally; costa straight; apex short, pointed; termen oblique, straight. Ground colour greyish, costa delicately spotted darker; distal part of wing beyond disc pale ochreous, darker at apex; indistinct elongate ferruginous fascia extending from mid-dorsum. Fringes grey. Hindwing grey with paler fringes.

Male genitalia (Figs. 1-4) as described for the genus. Base of transtilla broad, ventral edge concave in middle; socius atrophied, represented probably by some hairs in apical part of tegumen; sacculus broad, rounded terminally with subterminal fold above ventral edge; costal portion of valva slender; aedeagus slender, long; no cornuti in vesica.

Holotype, male: "Mex: Baja Cal.[ifornia] Norte, Arroyo Catavina, 35 mi. S. El Progreso, 2-IV-76, J. DOYEN"; G. S. 111786.

Mimcochylis plagiusa sp. n.

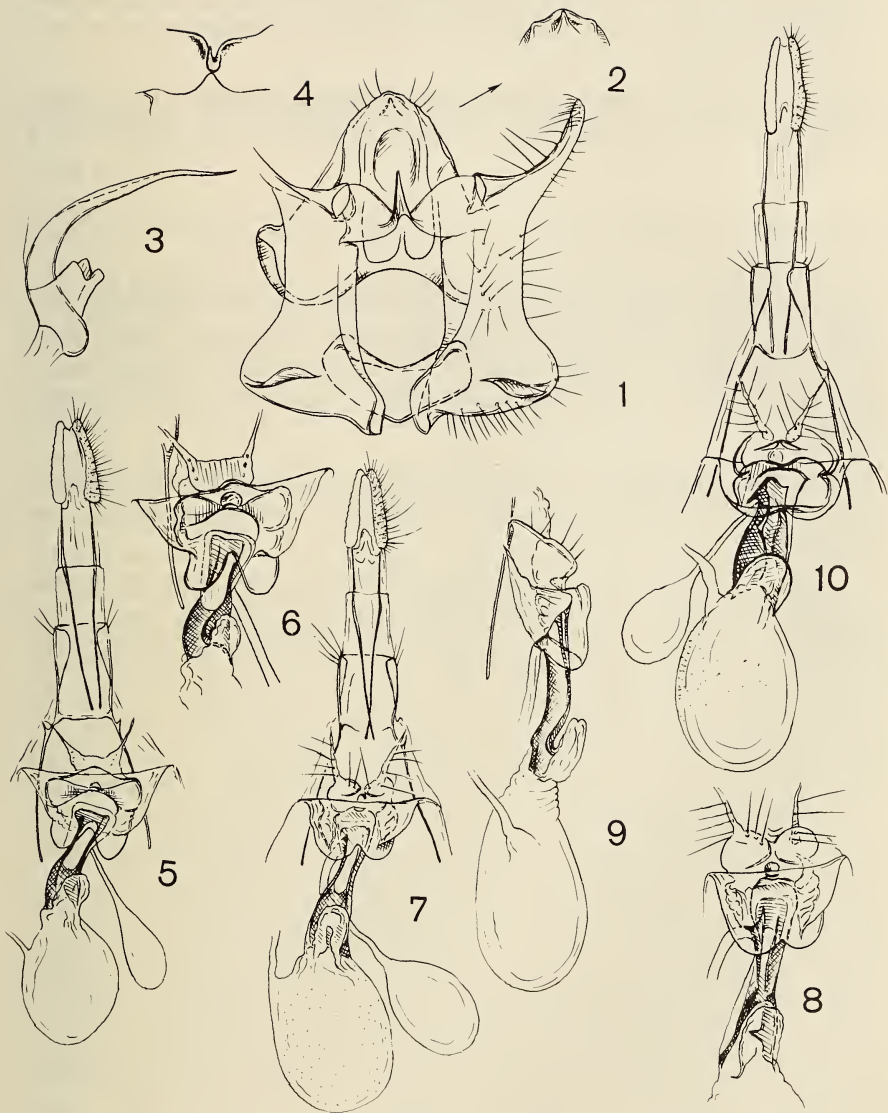
Alar expanse, 11 mm. Labial palpus as in preceding species, brownish laterally, frons and vertex cream grey, thorax concolorous, with brownish base of tegula. Forewing hardly broadening terminally; costs weakly convex; apex delicately rounded; termen oblique, almost straight. Ground colour dirty cream with weak ochreous hue, suffused with grey along costa and somewhat so along dorsum to middle; distal area yellowish pink with more ochreous suffusion medially and with scattered grey scales; median fascia ferruginous interrupted subcostally. Fringes yellowish mixed with grey towards tornus, with tips dark grey. Hindwing grey, paler basally; fringes pale grey with weak greyish median line.

Female genitalia (Figs. 5, 6): proximal portion of sterigma deeply incised medially; small dorsally slightly concave beyond ostium; ductus bursae slender, expanding in anterior half.

Holotype, female: "Mex: 30 mi. W. Durango, 8400' el.[evation], Dgo., VIII-7-72, At light, J. POWELL & D. VEIRS"; G.S. 11762.

Mimcochylis plasmodia sp. n.

Alar expanse, 11 mm. Head greyish, thorax cinnamon brown, greyish medially. Forewing as in preceding species; ground colour cream-grey with pink hue, in distal third ochreous pink. Wing base suffused with yellowish brown; dorsal elongate blotch darker. Base of fringes dark yellow, otherwise yellowish tipped grey. Hindwing whitish grey, grey on peripheries; fringes concolorous with wing base, grey at apex.



FIGS. 1-10. – Male and female genitalia of *Mimcochylis* gen. n. : 1-4 – *M. planola* sp. n., holotype; 5-6 – *M. plagiusa* sp. n., holotype; 7-9 – *M. plasmodia* sp. n., holotype; 10 – *M. ochroplasta* sp. n., holotype.

Female genitalia (Figs. 7-9) as in preceding species but proximal incisure of sterigma much smaller and lateral parts shorter, more rounded ; sclerite of antrum longer.

Holotype, female : "Mex : Sin.[aloe] 8 mi. W. El Palmito, VIII-8-12-72 ; J. POWELL, D. VEIRS & C. D. MACNEILL, bl.[ack] & white lights" ; G.S. 11760.

Mimcochylis ochroplasta sp. n.

Alar expanse, 9 mm. Head greyish, thorax dark grey. Forewing slender ; costa straight, termen strongly oblique. Ground colour brownish grey, distal portion of wing suffused with ferruginous, less so at base ; dorsal blotch ferruginous ; fringes rather concolorous with ground colour (damaged), mixed with grey at tornus. Hindwing whitish grey with paler fringes.

Female genitalia (Fig. 10) : Proximal incisure of sterigma very shallow ; ductus bursa somewhat shorter and broader than in preceding two species.

Holotype, female : "Mex : Sinaloa, 8 mi. W El Palmito, 6000' X-12-1975 at light ; J. POWELL, J. CHEMSAK, T. EICHLIN & T. FRIEDLANDER" ; G.S. 6080.

ZOBODAT - www.zobodat.at

Zoologisch-Botanische Datenbank/Zoological-Botanical Database

Digitale Literatur/Digital Literature

Zeitschrift/Journal: [Nota lepidopterologica](#)

Jahr/Year: 1985

Band/Volume: [8](#)

Autor(en)/Author(s): Razowski Josef [Jozef]

Artikel/Article: [Description of Mimcochylis gen. n. with four new species \(Tortricidae\) 61-64](#)