

# Opuscula Zoologica

Herausgegeben von der Zoologischen Staatssammlung in München

Nr. 92

15. März 1967

## A New Species of *Neuroctenus* Fieber from Tanganyika

(Hemiptera, Aradidae)

By Nicholas A. Kormilev

MUS. COMP. ZOOLOG.  
LIBRARY.

MAR 21 1968

HARVARD  
UNIVERSITY

Dr. Heinz Freude of the Zoologische Sammlung des Bayerischen Staates in Munich kindly sent me for identification six specimens of African *Neuroctenus*, for which I express him my sincere thanks.

Three of the specimens, collected by A. v. Pez in Transvaal, near Pretoria, resulted to belong to the species *Neuroctenus caffer* (Stål), 1855, a widely distributed species in South Africa, and Madagascar. Compared with specimens from Capeland the male had a little more depressed disc of the hypopygium, but the general aspect was that of *N. caffer*.

Other three specimens, collected in Tanganyika by Dr. C. Lindemann, represent a new species, described else where in this paper.

Subfamily *Mezirinae* Oshanin

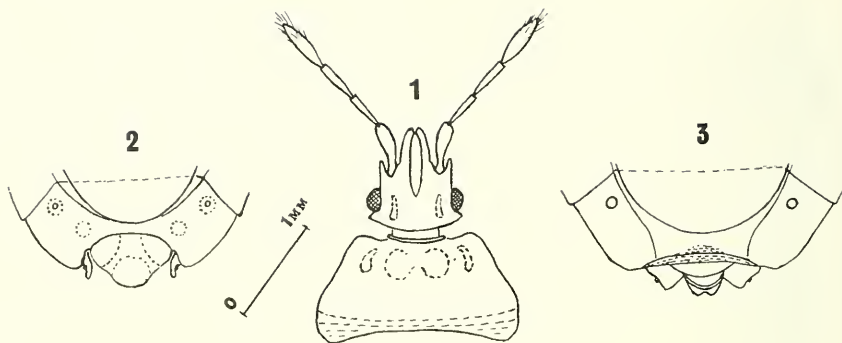
Gen. *Neuroctenus* Fieber, 1865

*Neuroctenus Freudei* n. sp. (Figs. 1—3)

Male. Elongately ovate, slightly widening backward; the base of the scutellum, and connexiva, with spots of greyish incrustation.

Head as long, or slightly longer, than wide through the eyes ( $\delta$ -23 : 23,  $\text{♀}$ -29 : 27.5). Anterior process long, almost reaches to the tip of the antennal segment I; antenniferous tubercles dentiform, parallel, acute, or slightly blunt at the tip, reaching to  $\frac{1}{4}$  of the ant. segm. I. Eyes semiglobose, protruding. Postocular tubercles small, blunt, reaching to the outer margin of the eyes. The whole upper surface of the head densely, and roughly granulate, with exception of two (1+1) elongate, callous spots mesad of the eyes. Hind border of the head slightly convex. Antennae slender, less than twice as long as the head ( $\delta$ -41 : 23,  $\text{♀}$ -44.5 : 29); proportions of the antennal segments, I to IV, are:  $\delta$ -9 : 9 : 10.5 : 12.5,  $\text{♀}$ -10.5 : 10 : 11 : 13.

Pronotum less than half as long as wide ( $\delta$ -20 : 46.5,  $\text{♀}$ -25 : 58). Collar slender, slightly sinuate anteriorly; antero-lateral angles subangularly rounded, very slightly produced forward; lateral borders parallel at humeri, strongly convergent in almost straight line anteriorly; hind border widely sinuate. Fore disc with four (2+2) low, semiobliterated elevations, and with five shallow depressions between, and laterad of them. Hind disc flat, but slightly uneven, some times finely, transversely rugose.



*Neuroctenus freudei* n. sp.

Fig. 1: ♂, head and pronotum. Fig. 2: ♂, tip of the abdomen, dorsal aspect. Fig. 3: ♀, tip of the abdomen, dorsal aspect.

Scutellum shorter than wide at the base (♂-23 : 31, ♀-30 : 41); carinate at the base, and laterally, with exception of the tip; disc transversely elevated at  $\frac{1}{3}$  of a distance from the base to the tip, and with a thin median carina, running from the transverse elevation to the tip; disc densely granulate.

Hemelytra reach to  $\frac{4}{5}$  of tergum VII in the male, or to  $\frac{3}{4}$  of tergum VII in the female. Corium short, slightly do not reach to the base of connexivum II (the first visible); its baso-lateral border is reflexed; apical border twice, shallowly sinuate; its apical angle is blunt at the tip. Membrane large, with finely anastomosed veins.

Abdomen elongately ovate, longer than wide across segment V (♂-86 : 60, ♀-107 : 75). Lateral borders slightly convex; PE-angles of connexiva slightly protruding; connexiva finely granulate. Spiracles from II to VII ventral, placed far from the margin; those of VIII lateral and visible from above. Paratergites small, and rather thin in the male; hypopygium relatively small, shorter than wide (11 : 19), slightly sinuate laterally, and rounded apically. In the female paratergites are subtriangular, reaching almost to the tip of small segment IX, which is slightly sinuate posteriorly.

Color dark ferruginous; tarsi yellow brown. Membrane dark brown with two whitish spots at the base.

Total length: ♂-6.24 mm., ♀-7.80 mm.; width of the pronotum: ♂-1.86 mm., ♀-2.32 mm.; width of the abdomen: ♂-2.40 mm., ♀-3.00 mm.

Holotype: ♂, Tanganyika, Uwemba at Njombe, 2000 m. — C. Lindemann coll., November 3, 1958; deposited in the Zoologische Sammlung des Bayerischen Staates in Munich.

Allotype: ♀, collected with the holotype; in the same collection.

Paratype: 1 ♀, collected with the holo- and allotype; in the collection of the author.

It is a pleasure to dedicate this species to Dr. Heinz Freude, by whose kind office I had an opportunity to examine this lot.

*Neuroctenus freudei* n. sp. is related to *N. pavlitzkii* Kormilev, 1956, also from Tanganyika, but differs from it by: larger size, more

transverse pronotum, with almost straight lateral borders on the fore half (distinctly sinuate in *N. pavlitzkii*); by different shape of the hypopygium, and by different shape of the paratergites in both sexes.

### References

- K o r m i l e v, N. A., 1956: Notes on Aradidae from the Eastern Hemisphere XII, on some Mezirinae from Tanganyika. Mitt. Münchener Ent. Ges., **46**: 42—46.
- S t å l, C., 1855: Hemipt. fran Cafferlandet. Oefv. Vet. Ak. Forh., **12**: 38.

Address of the Author:  
365 Lincoln Pl., Ap. 2 F,  
Brooklyn, N. Y., 11238, U. S. A.

MUS. COMP. ZOOL.  
LIBRARY

MAR 21 1968

HARVARD  
UNIVERSITY

# ZOBODAT - [www.zobodat.at](http://www.zobodat.at)

Zoologisch-Botanische Datenbank/Zoological-Botanical Database

Digitale Literatur/Digital Literature

Zeitschrift/Journal: [Opuscula zoologica](#)

Jahr/Year: 1967

Band/Volume: [92](#)

Autor(en)/Author(s): Kormilev Nicholas Alexander

Artikel/Article: [A New Species of Neuroctenus Fieber from Tanganyika 1-3](#)