

Dogninades petrae sp.n., a new species from Brazil (Lepidoptera, Noctuidae, Herminiinae)

M. Lödl

Abstract

A new species of the genus *Dogninades* SCHAUS, 1916, *D. petrae* sp.n., is described and illustrated. A list of the hitherto known species of *Dogninades* is given.

Zusammenfassung

Eine neue Art der Gattung *Dogninades* SCHAUS, 1916, *D. petrae* sp.n., wird beschrieben und abgebildet. Eine Liste aller bisher bekannt gewordenen *Dogninades*-Arten wird vorgelegt.

Key words: Brazil, *Dogninades*, Herminiinae, Neotropical Region, new species, Noctuidae.

Introduction

Two recent papers contribute to the knowledge of the genus *Dogninades* SCHAUS, 1916: GAAL-HASZLER (2000) and LÖDL (2001). The first illustrates and redescribes the type species of *Dogninades*, *D. jactatalis* (WALKER, [1859] 1858) and introduces a new species. The second transfers *Lametia anemolia* DRUCE, 1891 to the Herminiinae and places it in *Dogninades*. This paper deals with a fourth species of the genus *Dogninades*, *D. petrae* sp.n. Holotype and paratypes of the new species are deposited in The Natural History Museum, London (BMNH).

Dogninades petrae sp.n.

(Figs. 1-5)

Type material:

Holotype: ♀, [Brazil] "Castro Paraná 950m. E.D. Jones. \ 3544 \ E.D. Jones Coll. Brit. Mus. 1919-295. \ Noctuidae Brit. Mus. slide No. 16496 ♀" (BMNH) (Fig. 1).

Paratypes: 3 ♀ ♀, [Brazil], Castro, Paraná, 950 m, E.D. Jones, Brit. Mus. 1919-295 (BMNH).

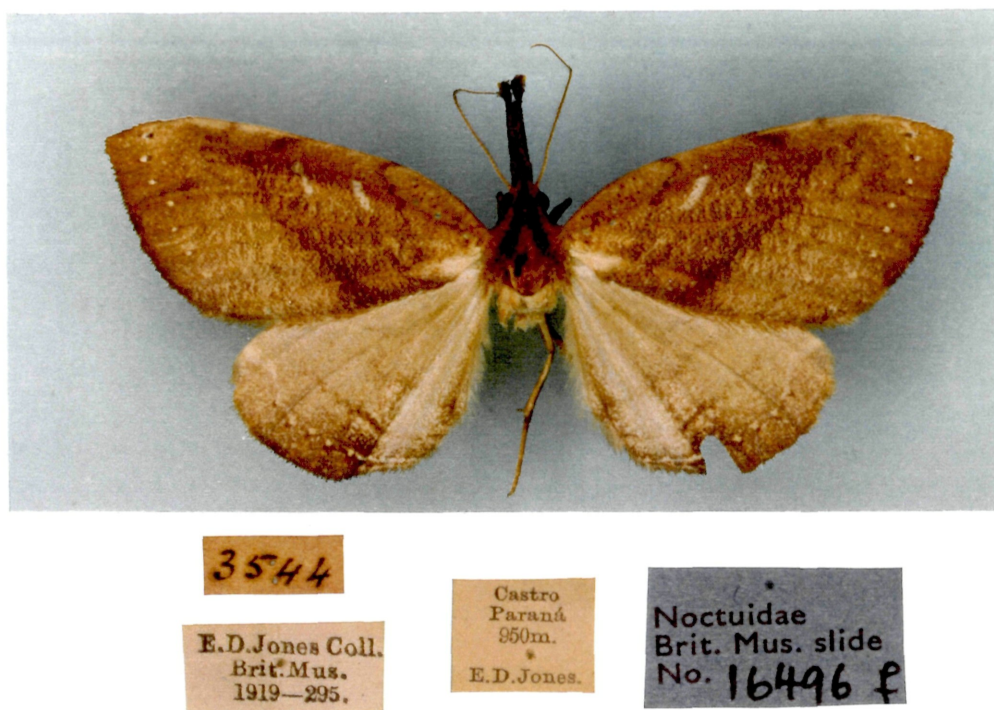


Fig. 1: *Dogninades petrae* sp.n., ♀-holotype (BMNH).

Description

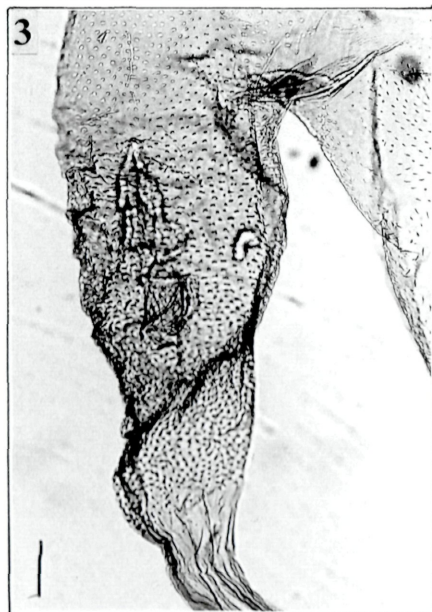
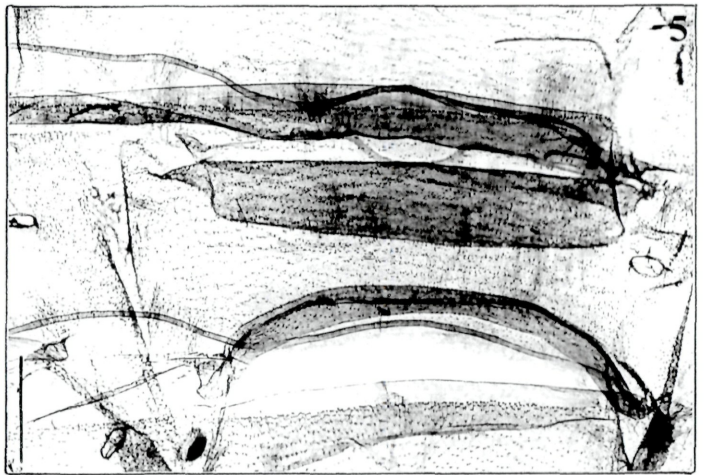
Derivatio nominis: The new species is dedicated to cand. rer. nat. Petra Paumkirchner, Wien in memory of excellent co-operation and numerous hours of studying Hypeninae and Herminiinae in the BMNH.

Head: Reddish brown with dark shades, labial palps very long, porrect, dark brown with black and pale scales. Labial palps with long scales on the dorsal surface, these scales dark brown with whitish tips. Second joint very long, five times as long as third joint. Antennae with short ciliae. Colour of antennae brown with white, lateral plates.

Thorax and abdomen (Fig. 5): The thorax is reddish brown with dark shades and pale ochreous scales on the sides, the abdomen is of reddish brown colour. Sternites of the abdomen with bar-shaped folds. These folds are especially significant on the second and third abdominal segment (Fig. 5).

Wings: Wingspan = 43-45 mm. Forewing with rounded costal margin, apex not very significantly fine pointed. Forewing ochreous, speckled with dark brown dots and stripes. Antemedial and postmedial band simple, brown and zigzagged. Both are oblique with a prong near the costal margin. The orbicular spot as well as the reniform spot are pale oblique patches. The subterminal line is marked with tiny whitish dots. As in the genus *Dogninades* usual the hindwing exhibits postmedian lines which are kneed near the tornus (a typical Herminiinae feature !). The ground colour of the hindwing is pale ochreous and greyish, the marginal shade is significant.

Female genitalia (Figs. 2-4): The shortest of all *Dogninades* genitalia with a total length of 4.3 mm (Fig. 2). Papillae very big with a broad and straight distal margin (Fig. 4). Appendices long and nearly of the same length. Ostium simple, surrounded by folds and grooves. Ductus bursae short and grooved. Bursa broad and skinny, dispersely covered with tiny spines. A broad appendix is present, also



Figs. 2-5 *Dogninades petrae* sp.n., holotype ♀. Noctuidae Brit. Mus. slide No. 16496:

Fig. 2: Genitalia, total. Scale = 0.5 mm.- **Fig. 3:** Ductus seminalis and appendix. Scale = 0.1 mm.- **Fig. 4:** Papillae. Scale = 0.1 mm.- **Fig. 5:** Bar-shaped folds on abdominal sternites 2/3. Scale = 0.5 mm.

covered with small spines. The ductus seminalis is relatively broad and is running into the appendix (Fig. 3).

Distribution: Known only from Paraná, Brazil.

Discussion: The new species can be distinguished from the other species by its relatively small size and the ochreous or beige ground colour of the wings. There is no chocolate brown touch as in the other species. The female genitalia is short and stout and exhibits the broadest and shortest ductus bursae in the genus.

List of *Dogninades*-species:

Dogninades jactatalis (WALKER, [1859] 1858) [*Hypena*]

Dogniades[sic] *renei* GAAL-HASZLER, 2000

Dogninades anemolia (DRUCE, 1891) [*Lametia*]

Dogninades petrae sp.n.

Literature

GAAL-HASZLER, S. 2000: *Dogniades renei* sp.n., eine neue Herminiinae aus Costa Rica (Lepidoptera, Noctuidae).- *Quadrifina* 3: 295-302.

LÖDL, M. 2001: *Dogninades anemolia* (DRUCE, 1891) [*Lametia*] comb.n., a new genus combination of a rare Herminiinae (Lepidoptera, Noctuidae).- *Quadrifina* 4: 41-44.

Author's address: Mag. Dr. Martin Lödl, Naturhistorisches Museum Wien, Burgring 7, A-1014 Wien, Austria.- e-mail: martin.loedl@nhm-wien.ac.at

ZOBODAT - www.zobodat.at

Zoologisch-Botanische Datenbank/Zoological-Botanical Database

Digitale Literatur/Digital Literature

Zeitschrift/Journal: [Quadrifina](#)

Jahr/Year: 2001

Band/Volume: [4](#)

Autor(en)/Author(s): Anonymus

Artikel/Article: [Dogninades petrae sp.n., a new species from Brazil \(Lepidoptera, Noctuidae, Herminiinae\). 77-80](#)