

# ***Catada bellaria* sp.n., a new hypenine noctuid species from Borneo (Lepidoptera, Noctuidae, Hypeninae)**

**M. Lödl & P. Paumkirchner**

---

## **Abstract**

A new species of the genus *Catada* WALKER, [1859] 1858, *C. bellaria* sp.n., is described and illustrated. The new species is found to be member of a group of species with a helmet-like uncus and a sickle-shaped scaphium. The lectotype ♂ of *C. charalis* SWINHOE, 1900 is designated.

## **Zusammenfassung**

Eine neue Art der Gattung *Catada* WALKER, [1859] 1858, *C. bellaria* sp.n., wird beschrieben und abgebildet. Die neue Art gliedert sich gut in eine Artgruppe ein, die durch helmförmige Unci und sichelförmige Scaphia gekennzeichnet ist. Die Lectotypifizierung von *C. charalis* SWINHOE, 1900 wird vorgenommen.

**Key words:** Borneo, *Catada*, Hypeninae, Indo-Australian Region, Indonesia, new species, Noctuidae.

---

## **Introduction**

Recently three papers have contributed to the knowledge of the the genus *Catada* WALKER, [1859] 1858: LÖDL (1999) redescribed and illustrated the type-species of *Catada*, *C. vagalis* (WALKER, [1859] 1858; LÖDL (2000) contributed to the synonymy of African taxa and finally LÖDL (2001) gave a detailed review of the peculiar lineages within the genus. Focus of this paper are the genitalia structures, namely the uncus transformation. The knowledge of plesiomorphic and apomorphic states of this character is now reasonable. The systematic position of *Catada* still remains unclear, however we treat it provisionally as a Hypeninae. In the collections of the Natural History Museum, London (BMNH) a new species could be located and is described as follows.

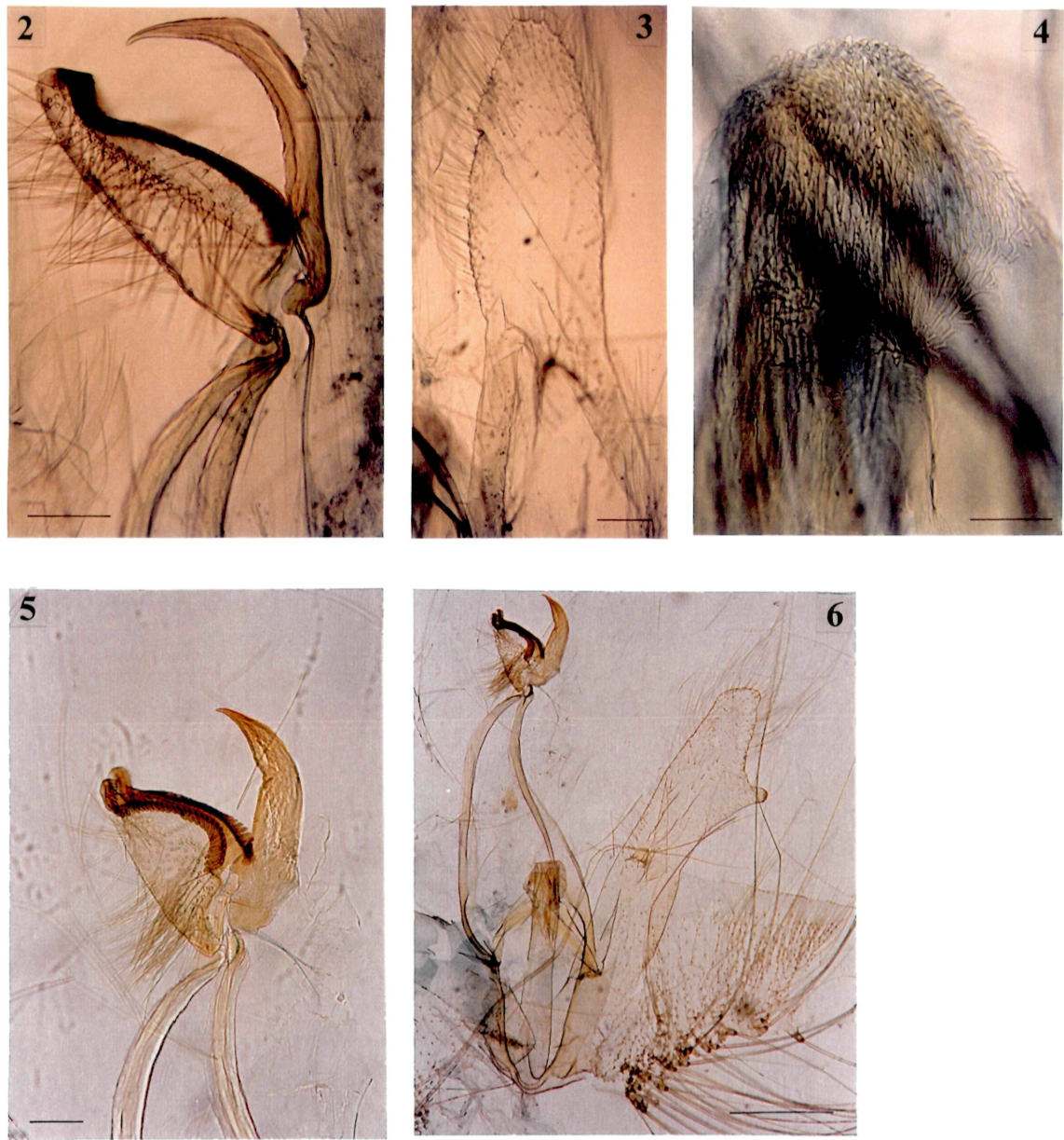
## ***Catada bellaria* sp.n.**

(Figs. 1-4, 7-10)

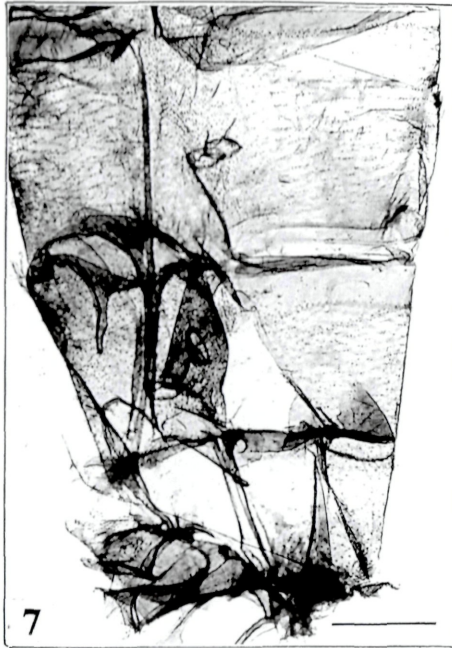
*Catada trichaealpa* [?] HAMPSON, nomen nudum

### **Type material:**

**Holotype:** ♂, "Type H.T. \ 97.34 \ Pulo Laut, Borneo. Doherty. June'91. \ *Catada trichaealpa* [?]. type ♂. Hmps. \ Noctuidae Brit. Mus. slide No. 16619" (Fig. 1).







**Figs. 7-10** *Catada bellaria* sp.n., holotype ♂, Noctuidae Brit. Mus. slide No. 16619:

**Fig. 7:** Abdominal segments 2/3 with apophyses. Scale = 0.5 mm.- **Fig. 8:** Genitalia, total. Scale = 0.5 mm.- **Fig. 9:** Aedeagus in situ. Scale = 0.1 mm.- **Fig. 10:** Coremata of right valve. Scale = 0.1 mm.

**Figs. 1-6** *Catada* spp. (previous page / vorige Seite):

**Fig. 1:** *Catada bellaria* sp.n., holotype ♂.- **Fig. 2:** dto.- Noctuidae Brit. Mus. slide No. 16619, ♂-genitalia, uncus. Scale = 0.1 mm.- **Fig. 3:** dto.- Right valve. Scale = 0.1 mm.- **Fig. 4:** dto.- Anellus, Scale = 0.1 mm.- **Fig. 5:** *Catada charalis* SWINHOE, 1900, lectotype ♂, Noctuidae Brit. Mus. slide No. 16504, uncus. Scale = 0.1 mm.- **Fig. 6:** dto.- genitalia, total, aedeagus in situ. Scale = 0.5 mm.

## Description

**Derivatio nominis:** The name mirrors the home-sickness of both authors while working in the BMNH. The species is named after the Bellariastraße near the Museum of Natural History in Vienna.

**Head:** Ground colour of the head reddish brown with white scales. The antennae are missing on the holotype. The second and the third joint of the labial palps are of the same length. The labial palps are reddish brown and white. The third joint is thin, slightly curved upwards as is typical for the genus. Its scales are reddish brown with a small row of white scales. The eyes are big and globular.

**Thorax and abdomen** (Fig. 7): Both are dark reddish brown and smoothly scaled, the abdominal segments are marked with white. The 2<sup>nd</sup> / 3<sup>rd</sup> abdominal sternite-complex wears protruding lobes (Fig. 7). This feature is very similar to *C. vagalis*, but the lobes are not connected with a protruding plate.

**Wings:** Wingspan = 20 mm. Forewings reddish brown with a significantly waved, white median line. The median line is shaded proximally. The reniform spot is very big and white and bead-like. The subterminal line is marked by dark, blurred dots. The forewings exhibit a rounded apex and a rounded outer margin. The hindwings are also reddish brown and have a beige fringe.

**Male genitalia** (Figs. 2-4, 8-10): The typical feature "long coremata of the sacculus" is fully developed (Fig. 10). The uncus exhibits the most advanced state (Fig. 2). The uncus resembles those of *C. vagalis* and *C. charalis* SWINHOE, 1900 (Fig. 5). The helmet-shaped uncus is slenderer than in the other two species, the scaphium is longer and significantly sickle-shaped. The most impressive difference between these three species is the shape of the valves. *C. bellaria* sp.n. exhibits weak and skinny, spatulate valves (Figs. 3, 6, 8). The valve is indented in the middle, a lobe with bristles is situated in the centre of the inner surface of the valve. *C. vagalis* has valves which are divided into two big lobes on the distal end, *C. charalis* in contrast exhibits just a small secondary lobe on the ventral margin of the valve. The latter two species have a small central lobe with bristles, the lobe of *C. bellaria* sp.n. is bigger. The anellus is rounded and covered with spines just in the caudal part. The aedeagus has a blunt caudal end and a rounded coecum. It is slightly kneed in its middle (Fig. 9).

**Distribution:** Known only from the holotype from Borneo.

## Discussion

The new species is closely related to the type-species of the genus, *C. vagalis* and to *C. charalis*. The first is known from Sri Lanka, the second is an Australian species. *C. bellaria* is clearly a distinct species which is known from Borneo. These three species form a certain species-group with advanced genitalia with a helmet-shaped uncus and a sickle-shaped scaphium. Therefore the designation of the lectotype of *C. charalis* is necessary:

### *Catada charalis* SWINHOE, 1900

(Figs. 5-6)

#### Type material:

**Lectotype:** ♂, "[Australia, Queensland] Coomoo 1900-250 \ Catada charalis Swinhoe ♂ type \ Specimen photog for CHECKLIST AUST LEP Film 113/16 \ Noctuidae Brit. Mus. slide No. 16504 ♂ \ Type" (BMNH) (Figs. 5-6, ♂-genitalia). The designation of the lectotype is according to the Rules of Zoological Nomenclature (ICZN), it is necessary to stabilize the nomenclature within the Noctuids and to enable the exact differentiation of the newly described species.

**Paralectotypes:** 1 ♀, "PARALECTOTYPE \ Coomoo \ Swinhoe Coll. Brit. Mus. 1926-239. \ Noctuidae Brit. Mus. slide No. 16505"; 1 ♂, "PARALECTOTYPE \ Paratype \ 5205 Coomoo Queensland \ Swinhoe Coll. Brit. Mus. 1926-239."; 1 ♂, 1 ♀, "PARALECTOTYPE \ Coomoo \ Swinhoe Coll. Brit. Mus. 1926-239." (BMNH).

## Literature

LÖDL, M. 1999: Redescription of *Catada vagalis* (WALKER, [1859] 1858) and some notes on the genus *Catada* WALKER, [1859] 1858 (Lepidoptera: Noctuidae: Hypeninae).- *Quadrifina* 2: 137-144.

- LÖDL, M. 2000: *Catada icelomorpha* BETHUNE-BAKER, 1911 syn.n., new junior, subjective synonym of *Catada ndalla* BETHUNE-BAKER, 1911 (Lepidoptera: Noctuidae: Hypeninae).- *Quadrifina* 3: 23-31.
- LÖDL, M. 2001: A peculiar evolutive lineage of the uncus in the genus *Catada* WALKER, [1859] 1858 (Lepidoptera, Noctuidae, Hypeninae).- *Spixiana*, 24(1): 77-84.

**Author's addresses:**

Mag. Dr. Martin Lödl, Naturhistorisches Museum Wien, Burgring 7, A-1014 Wien, Austria.- e-mail: [martin.loedl@nhm-wien.ac.at](mailto:martin.loedl@nhm-wien.ac.at)

Mag. Petra Paumkirchner, Murlingengasse 7/25, A-1120 Wien.- e-mail: [paumkirchner.petra@aon.at](mailto:paumkirchner.petra@aon.at)

---

# ZOBODAT - [www.zobodat.at](http://www.zobodat.at)

Zoologisch-Botanische Datenbank/Zoological-Botanical Database

Digitale Literatur/Digital Literature

Zeitschrift/Journal: [Quadrifina](#)

Jahr/Year: 2001

Band/Volume: [4](#)

Autor(en)/Author(s): Lödl Martin, Paumkirchner Petra

Artikel/Article: [Catada bellaria sp.n., a new hypenine noctuid species from Borneo \(Lepidoptera, Noctuidae, Hypeninae\). 81-85](#)