

REICHENBACHIA

STAATLICHES MUSEUM FÜR TIERKUNDE IN DRESDEN

Bd. 12

Ausgegeben: 12. Dezember 1969

Nr. 13

The Taxon of the Genus *Pseudotiphia* Ashm.

(Hymenoptera, Tiphidae)

with 2 figures

CAROL G. NAGY

Agigea / SR Rumänien

Recent studies of the *Tiphidae* have resulted in preliminary revisions of the genera *Tiphia*, *Sierocolpa*, *Icronatha*, and *Ludita* (C. NAGY, 1967). I have now studied more than 1000 specimens and feel in a position to make some important additions to knowledge of the family. I am indebted to Dr. L. MÓCZÁR of Hungarian Natural History Museum, to P. M. F. VERHOEFF, Den Dolder, and to REGINE ECK, Staatl. Museum für Tierkunde Dresden, for sending me an excellent series of the species discussed below.

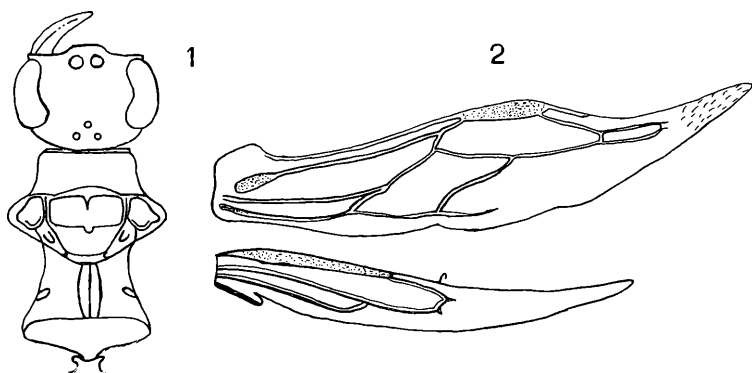
Genus *Pseudotiphia* ASHMEAD

1903, Canad. Ent., vol. 35, p. 6.

Type-species: *Tiphia brevipennis* LUCAS, 1846, by monotypy and original designation.

ASHMEAD in 1903 designated the North African species *Tiphia brevipennis*, to be type of his new genus *Pseudotiphia*. Originally assigned into *Myzinidae* transferred here into *Tiphidae*. The genus has been erroneously synonymized of *Tiphia* FABRICIUS by HEDICKE (1936).

According to the original description of ASHMEAD: „Apex of wings pointed; one or two discoidal cells; mandibles at apex simple, edentate; hind tibial spur very long, slender, acute (Africa) *Pseudotiphia*, ASHM., g. nov.“; the following additions may be made: Female, male unknown. Known species about 18 mm long, of wholly dark coloration, micropterous. Mouth opening about as wide as long; palpi large, maxillary palpus much longer than basal joint of maxilla; labium less than twice as long as wide. The conspicuous clypeus short and broad; clypeal extension broadly arcuate. Mandibles with an interrupted median groove. The lateral carina of pronotum well developed. Mesoscutum evidently shorter than the scutellum; antero-medial groove continuous. Prepectal carina absent. Tegula broader than long, with a short marginal



Figs. 1, 2: *Pseudotiphia brevipennis* Lucas, ♀ — 1: Head and thorax. — 2: Wings.

groove. Side of propodeum with the upper rugose part sharply separated from the lower, finely aciculate part. Hind basitarsus with a long, deep groove; hind tibia without well defined sensorial impression. Middle and hind tibiae on outside without stout clavate or furcate bristles. Forewing arising to middle of first tergum; nervation reduced in size, marginal cell open. First and second tergum without a transverse carina. Pygidium with its punctate part abruptly elevated apically above a narrow impunctate fringe.

This genus, presently known from a single species, is undoubtedly a derivate of *Tiphia*. It is possible that it should be included in *Tiphia* as a subgenus. The form of the mesothorax is unique in the *Tiphiidae*, and the absence of sensorial groove of the hind tibia are also unusual. Presumably these characters will also be found in the male sex.

Included species: Only the *brevipennis* LUCAS, known from Algeria only I have examined 3 ♀ ♀ from Sidi-bel-Abbes (no other data) and 1 ♀, Bône (T. A. MARSHALL) (Mus. Budapest), and 1 ♀ „Algeria“, 13 March 1928 (no collector data) (P. M. F. VERHOEFF coll.), and 2 ♀ ♀, Sidi-bel-Abbes, Nr. 82 (no other data) (Mus. Tierk. Dresden).

References

- ASHMEAD, W. H., 1903: Classification of the Fossorial, Predaceous and Parasitic Wasps, of the Superfamily *Vespoidea*, *Myzinidae*. — Canadian Entomologist, 35, pp. 4–7.
- HEDICKE, H., 1936: Hymenopterorum Catalogus, *Tiphiidae*. W. Junk Ed., Gravenhage, pp. 1–32.
- NAGY, C. G., 1967: Systematisches Studium der Tiphiiden Rumäniens (*Hym.*, *Tiphiidae*). — Reichenbachia, 8, pp. 175–204.
- TOURNIER, H., 1889: Hyménoptères Famille des Scolides, Monographie des espèces Européennes et des contrées limitrophes du Genre *Tiphia* F. — Ann. Soc. Entom. Belgique, 33, pp. 1–35.

ZOBODAT - www.zobodat.at

Zoologisch-Botanische Datenbank/Zoological-Botanical Database

Digitale Literatur/Digital Literature

Zeitschrift/Journal: [Reichenbachia](#)

Jahr/Year: 1968-70

Band/Volume: [12](#)

Autor(en)/Author(s): Nagy Carol G.

Artikel/Article: [The Taxon of the Genus Pseudotiphia Ashm. \(Hymenoptera, Tiphidae\) 141-142](#)