

# REICHENBACHIA

STAATLICHES MUSEUM FÜR TIERKUNDE IN DRESDEN

Bd. 19

Ausgegeben 15. Dezember 1981

Nr. 6

## Description of *Ooencyrtus patriciae* n. sp. from Nigeria (Hymenoptera, Encyrtidae)

With 10 Figures

B. R. SUBBA RAO

London

**Abstract.** *Ooencyrtus patriciae* n. sp. is described and the parasite has been reared from several heteropterous pests like *Clavigralla elongata*, *Clavigralla tomentosicollis*, *Riptortus dentipes*, *Anoplocnemus curvipes* and *Mirperus jaculus* and all these are very serious pests of legumes in Nigeria.

Dr. Patricia C. MATTESON has submitted some species of the genus *Ooencyrtus* that she reared from the eggs of heteropterous pests and whose biology and ecology she has studied while working at the International Institute of Tropical Agriculture at Ibadan, Nigeria. Her studies involved two species and one was determined as *Ooencyrtus kumanae* (HOWARD) and the other was new to science and requires a name as Dr. MATTESON is publishing the biology of the parasite in a forthcoming publication.

### *Ooencyrtus patriciae* n. sp. (Figs. 1, 2, 4, 5, 6, 8, 9, 10)

**Female** Length 0.75 to 1.00 mm. Head and thorax darkbrown to black, somewhat shining, with a greenish hue at certain angles of light; scutellum with coppery blue green metallic iridescence. Scape except radicle, all legs, basal half of gaster pale yellow; pedicel, flagillum and club dark yellow; last segment of tarsi and radicle of scape black. Wings hyaline; discal cilia beyond marginal vein, though very fine are closely spaced, with the result that the wing appears somewhat smokey in the distal half.

Head four times as wide as fronto-vertex in dorsal view, with the anterior margin semicircular; fronto-occipital margin slightly concave, not sharply acute; ocelli in an acute angled triangle, the lateral pair separated from the eye margins by less than half of their own diameter; head in frontal view only slightly wider than long (34:30); eyes large, about two times as long as the malar space, malar groove well impressed; antennal sockets below the level of the eyes, about one and a half times than their diameter from the mouth margin and separated from each other by twice their diameter. Scrobes shallow, finely coriaceous, convergent, separated from each other by a convex interscrobal elevation. Antennal scape long, cylindrical, about seven times as long as broad; pedicel just a little more than one-third the scape (5:14) and as long as the first two funicle segments combined; funicle segments 3–5 subequal, fourth the longest, 6 shorter than 5 and all segments progressively very slightly more broader; club slightly longer than the combined lengths of the last three funicle segments, rounded apically; rhinaria present on funicle segments 3 to 6 and on all joints of the club. Sculpture of head not raised, punctate reticulate; eyes with very fine pubescence, seen only under very high magnification.

Thorax gently convex, the axillae wide apart, not elevated, mesoscutum twice as broad as its length when measured across the tegulae; scutellum as long as broad. Sculpture of mesoscutum punctate to cellulate punctate and that of scutellum punc-

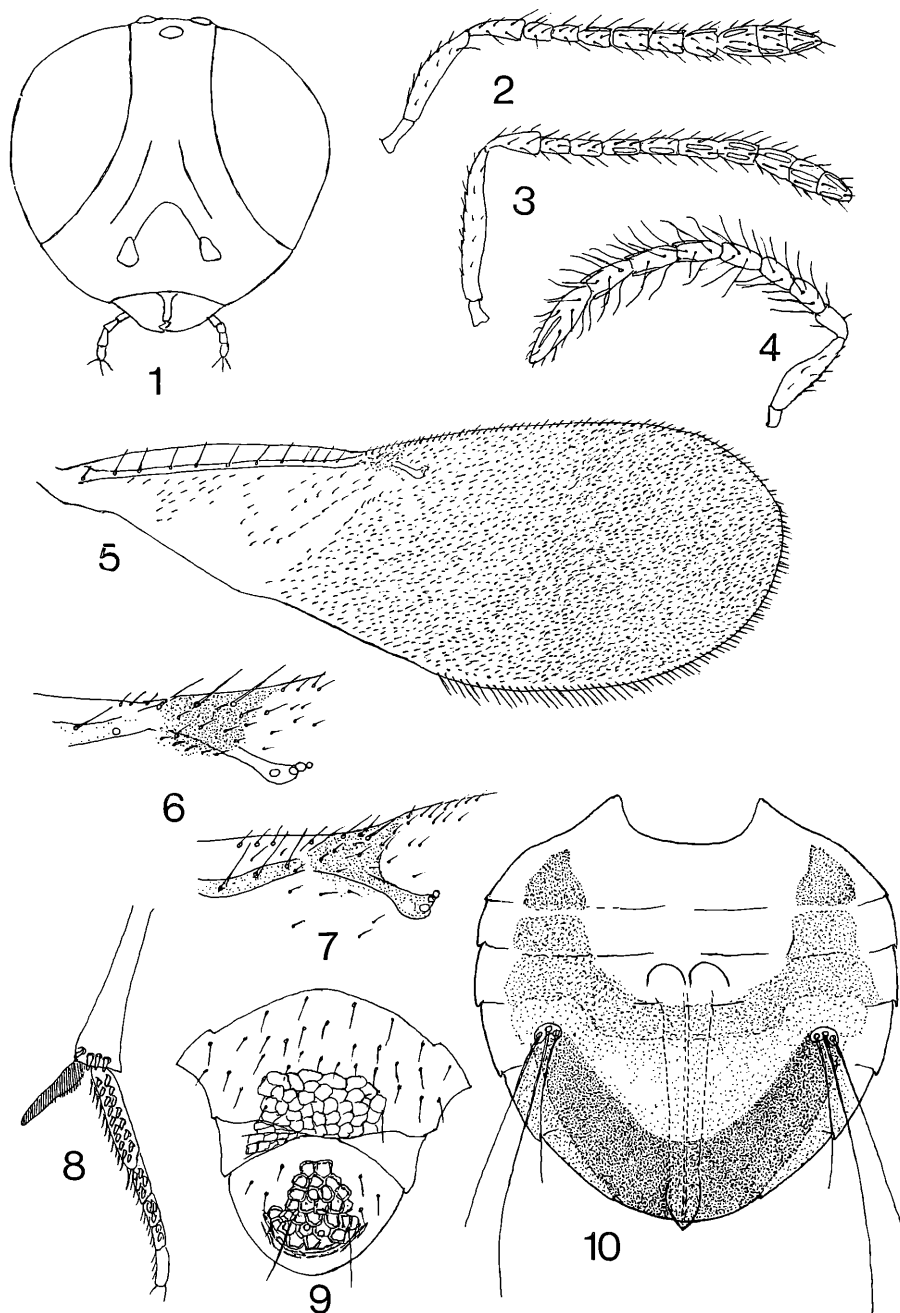


Fig. 1-10.

*Eurytoma patriciae* sp. n. 1: Head, frontal view, ♀ - 2: Antenna, ♀ - 4: Antenna, ♂ - 5: Forewing, ♀ - 6: Forewing, venation, ♀ - 8: Middle tibia and tibial spur, ♀ - 9: Thorax, sculpture, ♀ - 10: Gaster, ♀.  
*Eurytoma telenomicida* VASSILEVSKY. 3: Antenna, ♀ - 7: Forewing, venation.

tate — reticulate, posterolateral aspect of scutellum polished. Forewing length to breadth ratio of 8:3; marginal vein short, not very clearly defined, postmarginal vein very short, stigmal vein narrow; basal area of forewing sparsely but evenly ciliated, discal cilia beyond marginal vein very fine and closely spaced and as a result the wing disc appears to be slightly infusate in the distal half; marginal fringe short. Middle tibial spur slightly shorter than the basitarsus (9:12).

Gaster short, almost heart shaped and when relaxed and mounted on a slide broader than long (45:40); ovipositor three — fourths the length of the gaster, hardly exerted; when compared to the length of the middle tibia, the ovipositor three-fourths the tibial length, gonostyli half the length of the middle tibial spur.

**Male** Essentially similar to the female except for the following differences: vertex broader, ocelli in an isoscelus triangle; gaster uniformly dark brown to black. Funicle segments subequal, all longer than broad, club as long as the last two funicle segments combined; flagellum with slightly curved setae, the longest of these shorter than the length of the first segment.

**Material studied** *Holotype* ♀, Nigeria, Kaduna State, Yankara, ex *Clavigralla tomentosicollis* STÅL eggs, 15. xii. 1979 (P. C. MATTESON). *Paratypes* 11 ♀♀ 2 ♂♂, same data; Tanzania, Kilosa District, Ilonga Agricultural Research Institute, 1 ♀ 2 ♂♂, 16. vi. 1979 (P. C. MATTESON); 2 ♀♀ 3 ♂♂ ex *Mirperus jaculus* THUNBERG, 21. vi. 1979 (P. C. MATTESON); 2 ♀♀ 1 ♂ ex *Anoplocnemis curvipes* F., 21. vi. 1979 (P. C. MATTESON); 2 ♀♀ 1 ♂ ex *Clavigralla tomentosicollis* STÅL, 31. xii. 1978 (P. C. MATTESON); (and 1 ♀ 2 ♂♂, 16. vi. 1979); also studied but not included as paratypes, series of ♂♂ and ♀♀, Kaduna State, Yankara, ex eggs of *Clavigralla tomentosicollis*, 12. x. 1979 (P. C. MATTESON); series of ♂♂ and ♀♀, Ibadan, Nigeria, ex *Anoplocnemis curvipes*, 15. vii. 1976 (R. S. OCHIENG). 3 ♀♀ 1 ♂, Nigeria, Ibadan, ex *Riptortus dentipes* F., 13. iv. 1979 (P. C. MATTESON). Series of ♀♀ ♂♂, Tanzania, Kilosa District, Ilonga ARI, ex *Clavigralla elongata*, 21. vi. 1979 (P. C. MATTESON). The types and other material in the British Museum (Nat. History).

*Ooencyrtus patriciae* n. sp. is very close to *Ooencyrtus telenomicida* VASSILEVSKY, but differs from it in having much narrower forewings, in the length and breadth and pigmentation of the marginal vein and also in the ratio of the lengths and breadths of the funicular segments; also in *O. telenomicida* the funicular segments comparatively of the same width or only slightly broader progressively, but in the new species described the funicular segments progressively visibly broader and the last segment almost quadrate; the clava in *patriciae* is visibly thicker than the clava in *O. telenomicida*.

Address of the author:

B. R. Subba Rao, Commonwealth Institute of Entomology, c/o British Museum (Natural History), Cromwell Road, London SW 7 5BD, England

# ZOBODAT - [www.zobodat.at](http://www.zobodat.at)

Zoologisch-Botanische Datenbank/Zoological-Botanical Database

Digitale Literatur/Digital Literature

Zeitschrift/Journal: [Reichenbachia](#)

Jahr/Year: 1981

Band/Volume: [19](#)

Autor(en)/Author(s): Subba Rao B. R.

Artikel/Article: [Description of \*Ooencyrtus patriciae\* n. sp. from Nigeria \(Hymenoptera, Encyrtidae\) 39-41](#)