

# REICHENBACHIA

## Staatliches Museum für Tierkunde Dresden

Band 24

Ausgegeben: 1. Dezember 1986

Nr. 13

### Descriptions of New Species of Genera *Euproctis* HÜBNER and *Porthesia* STEPHENS from India (Lepidoptera, Noctuoidea, Lymantriidae)

With 8 Figures

S. L. GUPTA<sup>1)</sup>

New Delhi

#### *Euproctis delhensis* sp. n. (Figs. a, b, c, f)

**Male** Head, thorax and both the pairs of wings bright ochreous; abdomen fuscous; palpi upturned; antennae bipectinated with the branches long; hind tibiae with two pairs of spurs; forewing with a black spot at the end of cell, veins 4 and 5 originating from the same point and stalked for a very short distance, veins 7, 8, 9 and 10 stalked, vein 10 arising after 7, areole absent; hind wing with veins 3 and 4 stalked for a long distance, veins 6 and 7 also stalked.

**Male genitalia** Vinculum V-shaped; saccus U-shaped and well developed; uncus completely divided longitudinally into two arms, both the arms with the tip rounded; valvae with the outer and costal margin straight, breadth throughout the length uniform, tip of the valvae rounded; aedeagus without cornuti.

**Female** It appears almost same as male except the short branches of pectination of antennae and abdomen with anal tuft.

**Remarks** From the general appearance and other characters this new species is close to *Euproctis lunata* WALKER but differs from it on the following points: (i) forewing with a black spot at the end of cell instead of a lunule, (ii) veins 3 and 4 in hind wing stalked for a long distance as compared to very short stalk in case of *Euproctis lunata* WALKER.

**Distribution** India: Delhi.

**Material examined** ♂, Delhi, at light, 22. VI. 1971, Coll. S. L. Gupta (Holotype); ♀, same data as for holotype (Paratype) (Types located in National Pusa Insect Collection).

#### *Porthesia simlensis* sp. n. (Figs. c, d, g, h)

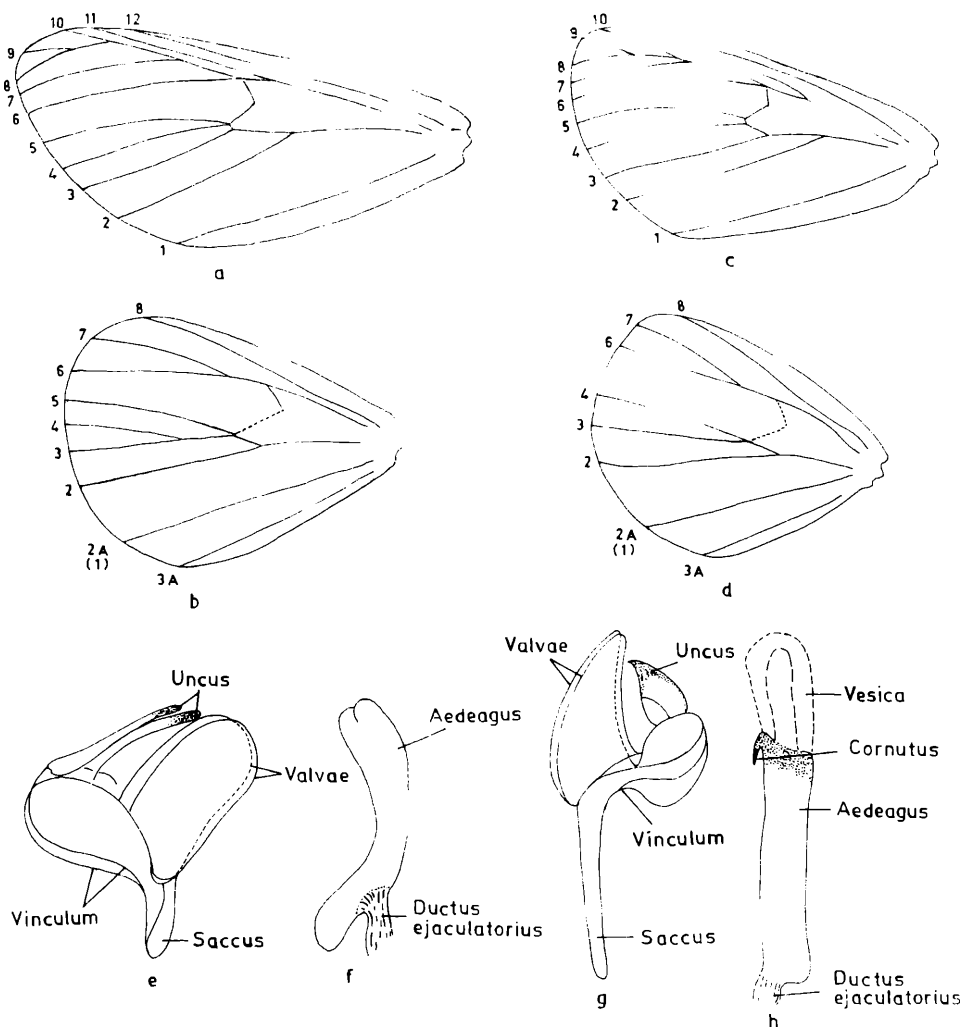
**Male** Head, thorax and abdomen white with a slight fuscous tinge; palpi porrect; antennae bipectinate with the branches long and brownish; hind tibiae with two pairs of spurs; forewing and hind wing white, the underside of both the wings except the outer margin suffused with black; forewing with veins 7, 8, 9 and 10 stalked, veins 7 and 10 given off from more or less same point; hind wing with veins 3 and 4 originating from same point of cell and not stalked, veins 6 and 7 stalked; abdomen with anal tuft orange.

**Male genitalia** Vinculum U-shaped; saccus long and well developed; uncus beak shaped with the tip pointed and slightly curved; valvae triangular in shape; aedeagus very well developed with a curved hook like spine on the lateral side of tip.

**Female** It is just like male in appearance but differs in being bigger in size, colour of wings completely white and branches of antennae short.

**Remarks** This new species is very near to *Porthesia xanthorrhoea* (KOLLAR) but

<sup>1)</sup> Division of Entomology, Indian Agricultural Research Institute, New Delhi - 110012 (India)



Figs. a+b: Venations of fore and hind wing of *Euproctis delhensis* sp. n., c+d: Venations of fore and hind wing of *Porthesia simlensis* sp. n., e+f: Male genitalia of *Euproctis delhensis* sp. n., g+h: Male genitalia of *Porthesia simlensis* sp. n.

differs from it on the forewing with veins 7 and 10 originating from more or less same point.

**Distribution** India: Simla.

**Material examined** ♂, Simla, at light, 22. VI. 1976, Coll. S. L. Gupta (Holotype); 2 ♂♂, ♀, Simla, at light, 24. VI. 1976, Coll. S. L. Gupta (Paratypes) (Types located in National Pusa Insect Collection).

#### Acknowledgements

The author is thankful to the Head, Division of Entomology and Dr. (Miss) Swaraj Ghai, Senior Systematic Entomologist of Indian Agricultural Research Institute, New Delhi for providing necessary facilities and constant encouragement.

#### References

- HUBNER, J., 1816-27 Verzeichniss bekannter Schmetterlinge, 431+72 pp. Augsburg.  
STEPHENS, J. F., 1928: Illustrations of British entomology 2: 58-65.

# ZOBODAT - [www.zobodat.at](http://www.zobodat.at)

Zoologisch-Botanische Datenbank/Zoological-Botanical Database

Digitale Literatur/Digital Literature

Zeitschrift/Journal: [Reichenbachia](#)

Jahr/Year: 1986-1987

Band/Volume: [24](#)

Autor(en)/Author(s): Gupta S. L.

Artikel/Article: [Descriptions of New Species of Genera Euproctis HUBNER and Porthesia STEPHENS from India \(Lepidoptera, Noctuoidea, Lymantriidae\) 107-108](#)