

# REICHENBACHIA

## Staatliches Museum für Tierkunde Dresden

Band 26

Ausgegeben: 20. Oktober 1988

Nr. 2

### *Bolanusoides bohater* sp. n. from New Guinea (Insecta, Homoptera, Auchenorrhyncha, Cicadellidae: Typhlocybinae)

With 26 Figures

IRENA DWORAKOWSKA  
Warszawa

The external characters of female *Bolanusoides heros* DIST. were illustrated in previous paper along with the new finding (1 ♀) from S India (DWORAKOWSKA, 1982). Originally the only species of the genus was known from the Himalayan ranges near both Western and Eastern extremes of Nepal. The male genitalia of a specimen from Kathmandu Valley in Nepal were described and correctly illustrated later (THAPA & SOHI, 1984). In the present paper I am providing another original drawings of this species for the sake of comparison with the newly described species and for the use by the future workers because in the same sample from New Guinea I have found 2 ♀♀ externally indistinguishable from the females of *Bolanusoides heros* DIST.

I am thankful to Mr. Roberto POGGI for enabling me study of the material.

#### *Bolanusoides heros* DIST. (Figs. 16–26)

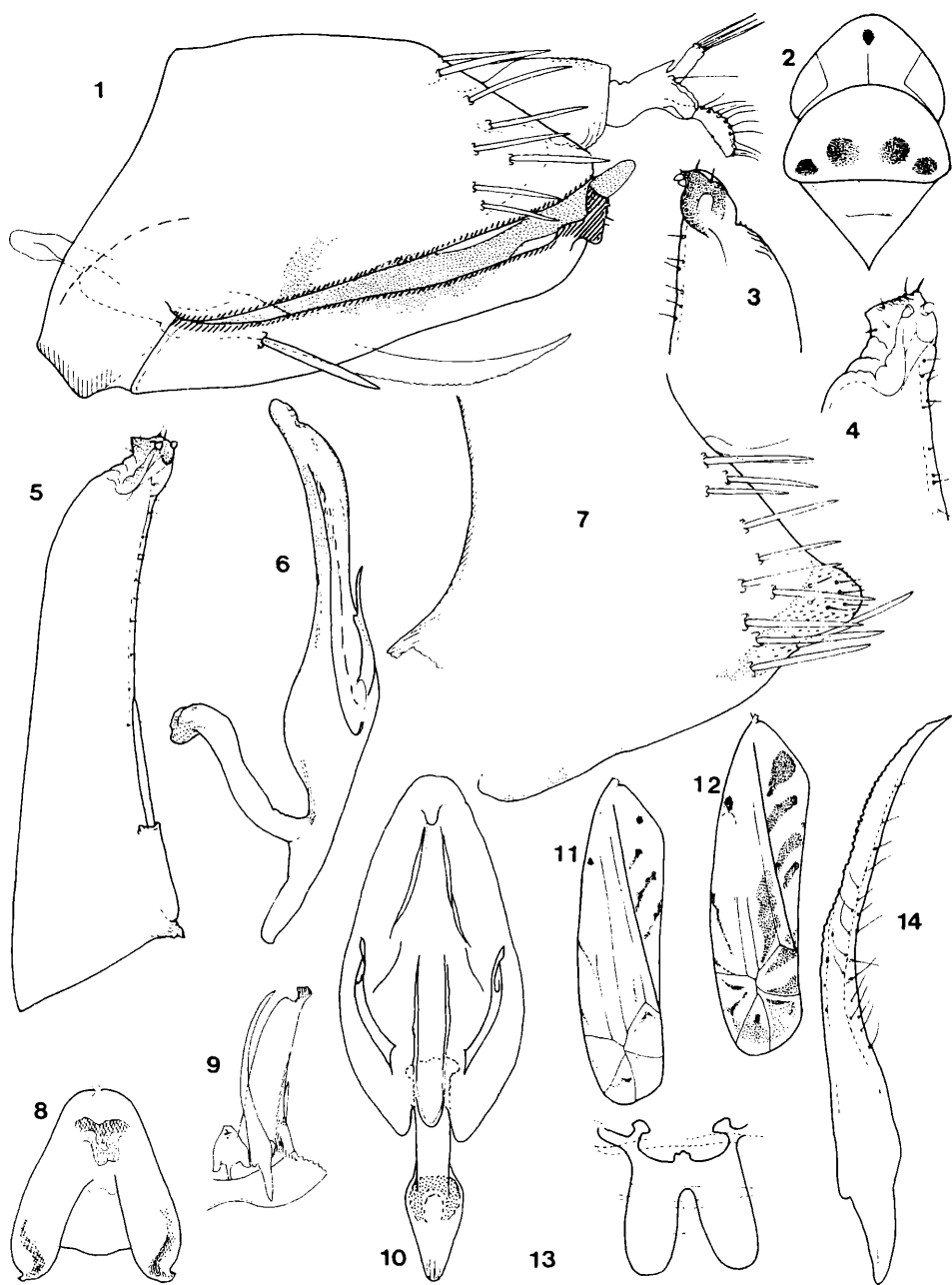
1 ♂, Central Nepal, Gara, Nov. 12, 1981, I. DWORAKOWSKA.

#### *Bolanusoides bohater* sp. n. (Figs. 1–15)

In body proportions the new species differs from *B. heros* DIST. by vertex longer and more mildly curved anteriorly. Anterior margin of vertex of female is more angulate.

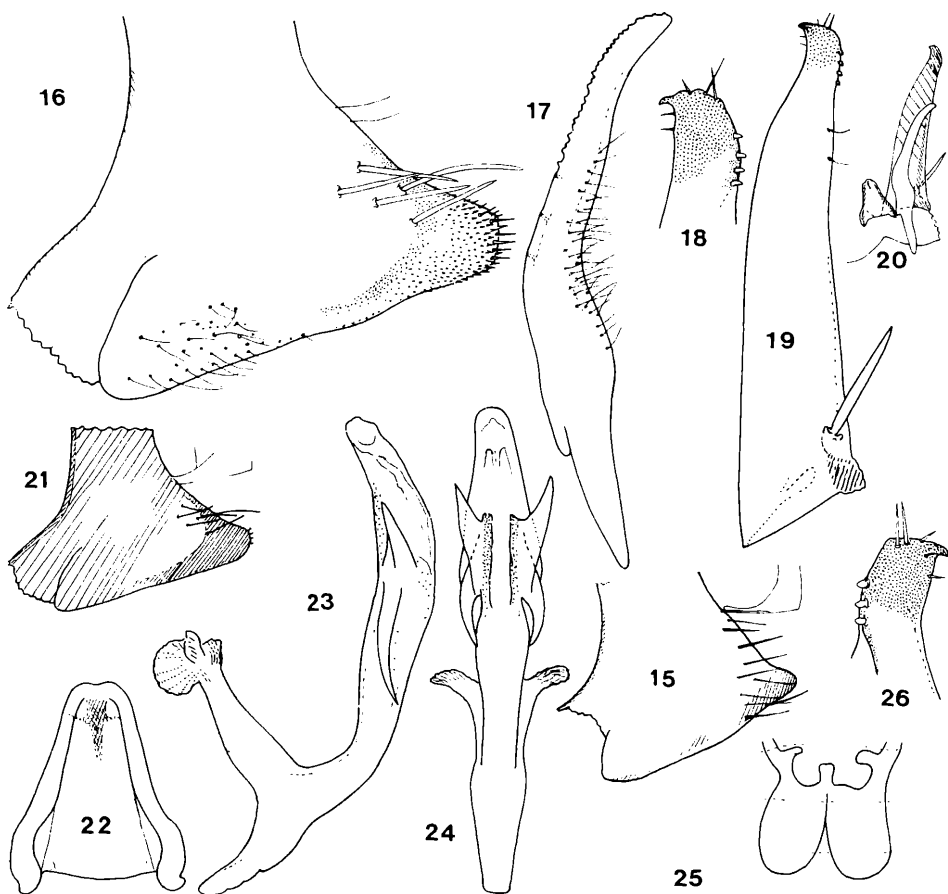
Face and anterior margin of vertex yellowish-white. Remaining parts of the vertex, anterior part and sides of pronotum citrine yellow. Pronotum sordid white to testaceous-greyish centrally. Scutum and scutellum ochre. The only fully coloured specimen is the holotype which has distinct blackish patches on vertex and pronotum (Fig. 2). The female which is much paler than the males has only two medial blackish patches on pronotum, scutum and scutellum yellowish-white and only basal triangles ochre. The dark pattern of male paratype differs from the illustrated one by smaller size of the dark patches and an additional patch in the midline at the anterior margin of pronotum. Fore wing yellow, pale yellowish to whitish. There is a constant blackish patch at the proximal end of the wax-field and dark to light brown patches on clavus and adjacent part of corium as in Figs. 11 and 12. In the wing of the holotype two proximal stripes on clavus are fused with each other at the claval furrow and the two distal ones fuse together at the hind margin, the nearest patch on corium is expanded basad and the background is more contrastic (citrine yellow at the centre of clavus and corium, in the costal cell and along claval furrow and terminal parts of MP and CuA). Length ♂ 3.4 and 3.5 mm, ♀ 4.1 mm.

Male genital apparatus (Figs. 1, 3–10, 14, 15) is similar to that of *B. heros* DIST. (Figs. 16–24, 26) differing in more numerous macrosetae on the terminal part of pygofer (Figs. 7, 15 – compare with Figs. 16, 21), smaller number (two in the holotype) of peg-like setae situated



Figs. 1-14.

*Bolanusoides bohater* sp. n. 1: male terminalia - 2: head and thorax, holotype - 3, 4: apical parts of subgenital plates - 5: subgenital plate - 6: penis, side view - 7: pygofer lobe - 8: connective - 9: scheme of proportions and pigmentation of subgenital plate, connective and 9th abdominal sternite - 10: penis, posterior view - 11: fore wing of female - 12: same of male, paratype - 13: abdominal apodemes - 14: paramere.



Figs. 15-26.

*Bolanusoides bohater* sp. n. 15: scheme of proportions and pigmentation of pygofer lobe and 1st segment of the anal tube. — *Bolanusoides heros* DIST.: 16-26.

more terminally on the apical part of the subgenital plate (Figs. 3, 4) and by only two upper processes on the penis stem (Fig. 6). Perhaps the lower process which is sharply terminated in *B. heros* DIST. (Figs. 23, 24) is lobe-like in the new species contributing to the antero-posterior flattening of the whole structure (Fig. 10). Abdominal apodemes (Fig. 13) elongated, narrower than in *B. heros* DIST. (Fig. 25).

**Holotype** male and **paratypes** 1 ♂, 1 ♀, New Guinea, SE of Moroka, 1300 m, July–Nov., 1983, S. E. LORIA.

The type-series is deposited at the Museo Civico de Storia Naturale, Genova, Italy. The name of the new species is Substantivum.

### References

- DWORAKOWSKA, I., 1982: Typhlocybini of Asia (Homoptera, Auchenorrhyncha, Cicadellidae). — Ent. Abh. Mus. Tierkd. Dresden **45**, 99–181.
- THAPA, V. K., SOHI, A. S., 1984: Description of the male of *Bolanusoides heros* Distant (Cicadellidae, Typhlocybinae, Typhlocybini). — Zoologica Orientalis **1** (2), 47

# ZOBODAT - [www.zobodat.at](http://www.zobodat.at)

Zoologisch-Botanische Datenbank/Zoological-Botanical Database

Digitale Literatur/Digital Literature

Zeitschrift/Journal: [Reichenbachia](#)

Jahr/Year: 1988-1989

Band/Volume: [26](#)

Autor(en)/Author(s): Dworakowska Irena

Artikel/Article: [Bolanusoides bohater sp. n. from New Guinea \(Insecta, Homoptera, Auchenorrhyncha, Cicadellidae: Typhlocybinae\) 5-7](#)