

REICHENBACHIA

Staatliches Museum für Tierkunde Dresden

Band 26

Ausgegeben: 10. April 1989

Nr. 23

Leptomias dilatipes, a New Curculionid Species from India (Insecta, Coleoptera, Curculionidae: Brachyderinae)

With 2 Figures

S. S. GANDHI & H. R. PAJNI

Chandigarh

MARSHALL (1916) referred 26 species to genus *Leptomias* FST., and put generic names *Heteromias* FST., *Parisomias* FST. and *Piazomias* LACD. (part) as its synonyms. Later on, GÜNTHER & ZUMPT (1933) added *Cneorrhinus* REDTENB. also in the list of synonyms of *Leptomias* FST. ASLAM (1961) revalidated *Parisomias* FST., reshuffled the position of a few species and described number of a new species under the restricted *Leptomias* FST. in this manner, as many as 32 species were put under genus *Leptomias* FST.

The authors have studied 11 species of this genus during their detailed studies on the subfamily Brachyderinae under two PL-480 projects between 1976–1986. Out of these, 5 are already known Indian species and remaining 6 are new species. Out of the later group, 5 species have already been reported (GANDHI & PAJNI, 1987a, 1987b; PAJNI & GANDHI, 1987). The present communication deals with the description of another new species. The holotypes/paratypes of all the known species have been studied in the British Museum of Natural History, London and Indian Museums in Delhi, Dehradun and Calcutta.

Observations

The genus *Leptomias* FST., as presently understood, is characterized by enclosed corbels, short metasternum and the long second abdominal sternite. It belongs to the tribe Tany-mecini which is characterized by the presence of vibrissae on the antero-lateral margins of prothorax.

Leptomias dilatipes sp. n. (Figs. 1–2)

Head piceous, finely punctate, striolate; frons striolate, aciculate, with a narrow central furrow, covered with pale brown scales and depressed setae. Eyes black, rounded and prominent. Rostrum piceous, as long as broad, parallel laterally; upper surface striolate and shallowly punctate, with a broad central furrow; scrobe deep, touching front margin of eye; mandible scar projecting; mentum with 2 setae. Antennae pale red, slender, covered with a pale white pubescence and a whorl of setae; scape abruptly clavate, reaching middle of eye; funicle with two basal joints almost equal, 3–7 about equal; club ovate.

Prothorax piceous, almost as broad as long, rounded laterally, broadest about middle, apex slightly narrower than base; upper surface coarsely granulate and shallowly punctate, with a shallow central stria; pattern formed by pale brown scales, spatulate and sub-recumbent setae. Scutellum indistinct. Thoracic sterna piceous, covered with brown scales and suberect setae; fore coxae contiguous, nearer to anterior margin of prosternum; metasternum equal to diameter of mid coxae.

Elytra fuscous, broadest behind middle, basal margin subtruncate, gently sloping down from near base to margins, apices jointly rounded; surface convex, shallowly punctato-striate, punctures almost indistinct behind, intervals broad; pattern formed by pale brown

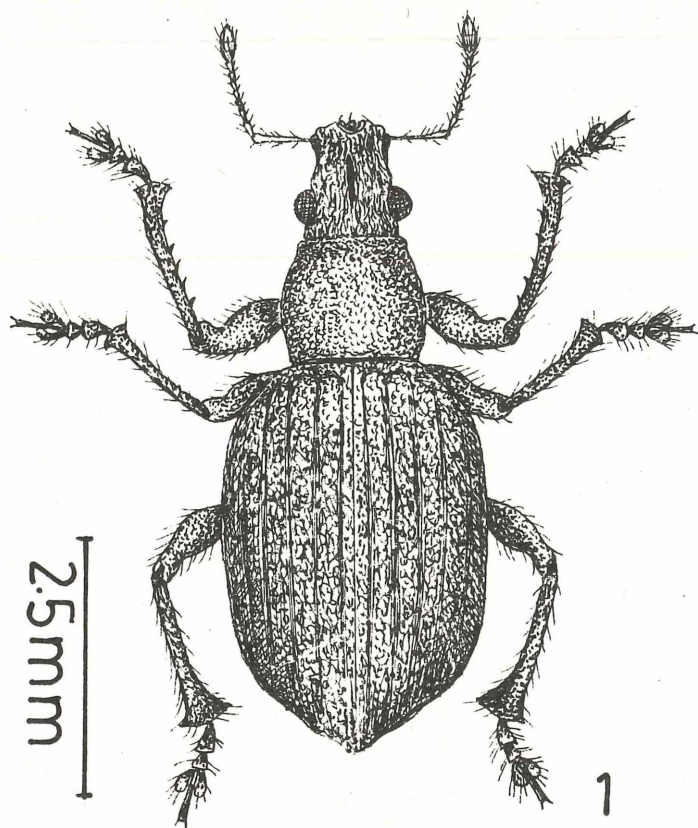


Fig. 1: Adult of
Leptomias
dilatipes sp. n.

scales having coppery reflection, spatulate and suberect setae. Legs piceous, slender, covered with sparse brown scales and suberect setae; front femora thick; hind tibiae with apical and expanded angularly on external side, corbels enclosed; tarsus with joint 1 longer than 2; claws connate.

Abdomen fuscous, with intercoxal process subangulate, covered with fine and short setae; visible sternite 2 equal to 3 and 4 together, separated from 1 by an angulated furrow, effaced in middle; apical sternite narrowly rounded.

Female genitalia with coxites much longer than broad (7:2), sparsely setose; styli longer than broad and beset with 2 setae at apex; spiculum ventrale sclerotized and elongated, much dilated at base, densely setose; spermatheca with cornu narrowly pointed; ramus broadly rounded, distinct and at level with collum.

Measurements: ♀: Length of body 6.5–6.8 mm. Width of body 2.5–2.7 mm. Length of rostrum 0.7–0.8 mm. Width of rostrum 0.7–0.8 mm.

Holotype: ♀: Uttar Pradesh, Kumoan hills, Khati (on wild vegetation), 2. 10. 1973, Ghorpade. — Paratype: ♀: same data as holotype. Holotype deposited in Entomology Section of Forest Research Institute, Dehradun.

Remarks: Although showing some similarity with *L. verrucicollis* FST., the present species is very different from the same in its rusty red coloration, striolate head and long scape exceeding middle of eye. Moreover, the species is unique in having the tips of hind tibiae prominently dilated externally.

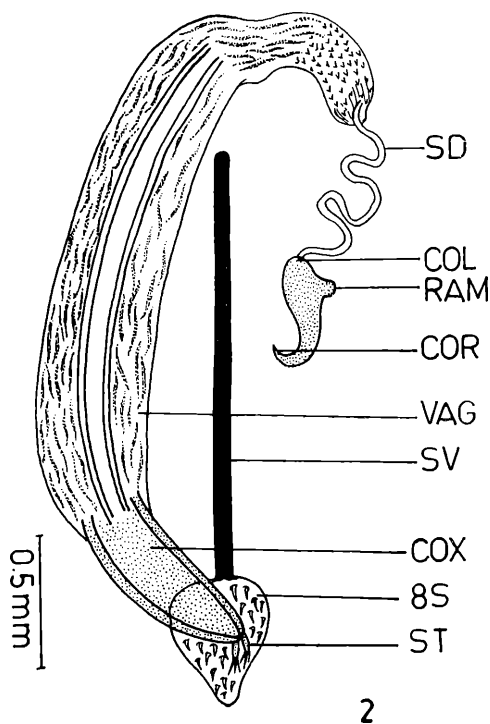


Fig. 2: *Leptomias dilatipes* sp. n., female genitalia.

Abbreviations: COL – collum, COR – cornu, COX – coxites, RAM – ramus, SD – spermathecal duct, ST – stylus, 8S – 8th sternum, SV – spiculum ventrale, VAG – vagina.

Acknowledgements

The authors are grateful to the Indian Council of Agricultural Research and U.S. Department of Agriculture for financing a 5 year Project on Indian Curculionidae and for sanctioning funds for the trip of the second author to various European Museums for study of type material. They are also thankful to Dr. Z. KASZAB † of Hungarian Natural History Museum, Budapest and Dr. P. K. SEN SARMA of Forest Research Institute, Dehradun for the loan of material. The research facilities provided by the Chairman, Department of Zoology, Panjab University, are also thankfully acknowledged.

References

- ASLAM, N. A. 1961: On Indo-Pakistan *Leptomias* Faust (Col.: Curc.) and allied genera. – Ann. Mag. Nat. Hist. (13), 4: 321–339.
- GANDHI, S. S. & PAJNI, H. R., 1987a: On two new species of genus *Leptomias* Faust from Kashmir (Col. Curc.: Brachyderinae). – Entomotaxonomia (Communicated).
- GANDHI, S. S. & PAJNI, H. R., 1987b: On a new species of genus *Leptomias* Faust from Kashmir (Col.: Curc. Brachyderinae). – Res. Bull. Panj. Univ. (Communicated).
- GÜNTHER, K. & ZUMPT, F., 1933: Coleopterorum Catalogus. Curculionidae: Tanymericinae. W. Junk, Berlin, Pars 131 1–131.
- PAJNI, H. R. & GANDHI, S. S., 1987: On two new species of genus *Leptomias* Fst. (Col.: Curc.: Brachyderinae). – Korean Journ. of Entomology (Communicated).
- MARSHALL, G. A. K., 1916: Fauna of British India including Burma and Ceylon (Curculionidae). (Taylor and Francis) London, p. 367

Address of the second author:

Dr. H. R. Pajni, Department of Zoology, Panjab University,
Chandigarh – 160014 (India)

ZOBODAT - www.zobodat.at

Zoologisch-Botanische Datenbank/Zoological-Botanical Database

Digitale Literatur/Digital Literature

Zeitschrift/Journal: [Reichenbachia](#)

Jahr/Year: 1988-1989

Band/Volume: [26](#)

Autor(en)/Author(s): Gandhi S. S., Pajni H. R.

Artikel/Article: [Leptomias dilatipes, a New Curculionid Species from India \(Insecta, Coleoptera, Curculionidae: Brachyderinae\) 131-133](#)