

REICHENBACHIA

Staatliches Museum für Tierkunde Dresden

Band 26

Ausgegeben: 10. April 1989

Nr. 26

Two New Species of *Elasmus* WESTWOOD, 1833 from India (Insecta, Hymenoptera, Chalcidoidea: Elasmidae)

With 13 Figures

TASAWWER HUSAIN¹⁾ & P. P. KUDESIA²⁾

Aligarh

Abstract. Two new species of *Elasmus* viz., *longiscapus* and *striptogasteri* are described from India.

Elasmus longiscapus sp. n. (Figs. 1–8)

Female Length 2.15 mm.

Corpus black except antennae, a spot around tegulae, apex of scutellum, apical half of fore femora, tibiae and tarsi of all legs orange yellow.

Head. Wider than long, microsculptured, beset with few setae, scrobe cavity shallowly indicated; occipital carina complete; ocelli in obtuse triangle. Antennae (Fig. 1) inserted at the level of ventral margin of eyes, setose, scape 5.5 as long as wide; pedicel slightly more than two times as long as wide, shorter than first funicle; first funicle slightly more than twice as long as wide, second about twice as long as wide, third less than twice as long as wide; club shorter than second and third funicle segments combined; mandibles (Fig. 2) with 8 dents; maxillary and labial palpi 2-segmented and unsegmented respectively.

Thorax. Pronotum (Fig. 3) concave on anterior margin, posterior margin with a row of setae; scutum densely setose, scutellum glabrous with two pairs of large setae. Fore wings hyaline, about 3.5 times as long as wide. Hind wings about four times as long as wide. Fore legs with coxae setose on apico-ventral surface, femora with a series of setae on ventral margin, tibiae and tarsi densely setose. Middle legs (Fig. 4) having coxae with short setae on apico-ventral margin and long setae at apex, femora with a long seta at apex and with a row of setae on outer-ventral margin, densely setose on apical half, tibiae and tarsi densely setose. Hind legs (Fig. 5) having coxae which is glabrous and femora with serrated dorsal margin, with few setae at apex, tibiae with 6 pegs at apex, densely setose, tarsi densely setose.

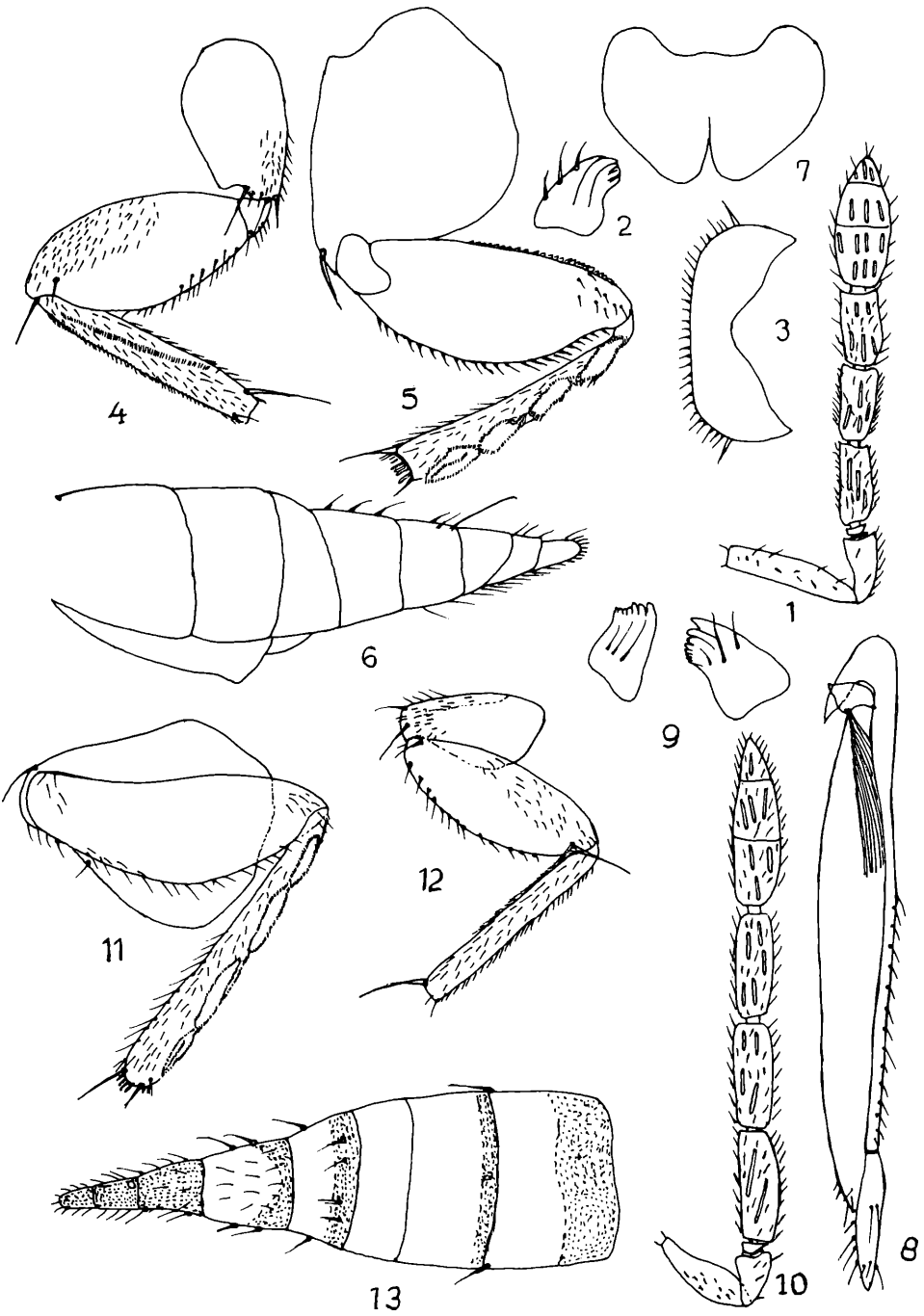
Gaster (Fig. 6) acuminate at apex, tergite I–III glabrous, IV with a row of setae on dorsum, V–VIII densely setose. Subgenital plate (Fig. 7) with a notch on posterior margin. Ovipositor (Fig. 8) issuing from base of gaster; first valvifers subtriangular, second long and narrow with a row of setae on apical half, third setose, outer plates of ovipositor narrow at base and apex, with thick muscular ridge on ventral margin.

Material studied: Holotype ♀, India: Uttar Pradesh (Aligarh), Oct. 1980, coll. T. HUSAIN. Paratypes 2 ♀♀, data same as for holotype.

The new species differs from closely related species *E. anticles* WALKER by having scape 5.5 times as long as wide, pedicel and first funicle more than twice as long as wide, scutellum with a yellow spot near tegulae.

¹⁾ Present address: Division of Entomology, Indian Agricultural Research Institute, New Delhi – 110012 (India). Home address see below.

²⁾ Division of Entomology, Department of Zoology, Sri Varshniya College, Aligarh – 202001 (India)



Figs. 1-8: *Elasmus longiscapus* sp. n., ♀. 1 - antenna, 2 - mandible, 3 - pronotum, 4 - middle leg, 5 - hind leg, 6 - gaster (lateral view), 7 - subgenital plate, 8 - ovipositor. - Figs. 9-13: *Elasmus striptogasteri* sp. n., ♀. 9 - mandibles, 10 - antenna, 11 - middle leg, 12 - hind leg, 13 - gaster (dorsal view).

***Elasmus striptogasteri* sp. n. (Figs. 9–13)**

F e m a l e Length 2.65 mm.

Corpus black except eyes, ocelli, antennae, scutum near tegulae with a spot, scutellum at apex, legs, tergite I on apical half, II, IV & V on apical two-third orange yellow.

Head wider than long in facial view, scrobe cavity shallow and glabrous, ocelli in obtuse triangle, antennae inserted above ventral margin of eyes; right mandible 8-dentate, left 7-dentate (Fig. 9), maxillary and labial palpi 2-segmented and unsegmented respectively. Antennae (Fig. 10) with scape less than three times as long as wide; pedicel 1.5 times as long as wide; first funicle segment about 3 times, second less than 3, third about 1.5 times as long as wide; club less than 4 times as long as wide, less than preceding two funicle segments combined.

Thorax having densely setose scutum, scutellum glabrous with two pairs of long setae. Fore wings having a brownish patch below stigmal vein, otherwise hyaline, about 3.5 times as long as wide. Hind wings hyaline, about 4 times as long as wide. Fore legs having coxae densely setose on ventral surface and long setae at apex, femora and tibiae and tarsi densely setose. Middle legs (Fig. 11) having coxae setose on ventral surface of apical half, femora setose on apico-ventral surface, ventral margin with a row of setae and having a long seta at apex, tibiae and tarsi densely setose. Hind legs (Fig. 12) having coxae and femora almost glabrous except a row of setae on ventral surface of femora, tibiae and tarsi densely setose.

Gaster (Fig. 13) acuminate at apex, tergites I–III glabrous on dorsum, IV with a row of setae, V–VII dorsally setose; subgenital plate and ovipositor as in *E. longiscapus* sp. n.

Material studied: **H o l o t y p e** ♀, India: Uttar Pradesh (Aligarh), Nov. 1981, coll. T. HUSAIN. **P a r a t y p e s** 2 ♀♀, data same as for holotype.

This new species differs from closely related species *E. claripennis* (CAMERON) in having black tegulae and orange yellow legs, scape less than three times as long as wide, second and third funicles segments less than 3 times as long as wide.

Types has been retained for the time being and later on will be deposited in NPC, I.A.R.I., New Delhi, India.

References

- CAMERON, P., 1913: On the parasitic Hymenoptera reared at Dehra Dun, North India from lac (Tachardia) and scale Insects. — Ind. For. Rec. **4**: 91–110.
- FERRIERE, C., 1947: Les espèces européennes du genre *Elasmus*. — Mitt. Schweiz ent. Ges. **20**: 565–580.
- GIRAULT, A. A., 1920: New species of *Elasmus* from Australia. — Insecutor Inscit. Menstruns **7** 181–186.
- MANI, M. S. & SARASWAT, U. G., 1972: On some *Elasmus* (Hym., Chalcidoidea) from India. — Oriental Ins. **6** (4): 495–506.
- WALKER, F., 1846: Characters of some undescribed species of chalcids. — Ann. Mag. Nat. Hist. **17** (1): 117–185.

ZOBODAT - www.zobodat.at

Zoologisch-Botanische Datenbank/Zoological-Botanical Database

Digitale Literatur/Digital Literature

Zeitschrift/Journal: [Reichenbachia](#)

Jahr/Year: 1988-1989

Band/Volume: [26](#)

Autor(en)/Author(s): Husain Tasawwer, Kudeshia P. P.

Artikel/Article: [Two New Species of Elasmus WESTWOOD, 1833 from India \(Insecta, Hymenoptera, Chalcidoidea: Elasmidae\) 149-151](#)