

REICHENBACHIA

Staatliches Museum für Tierkunde Dresden

Band 29

Ausgegeben: 10. Dezember 1992

Nr. 26

Talis astridella sp. n., a new species from Mongolia

(Insecta, Lepidoptera: Crambidae)

Results of the German-Mongolian Biological Expeditions since 1962 (Nr 219)

With 8 figures

INGMAR LANDECK

Finsterwalde

Abstract. *Talis astridella* sp. n. from Western Mongolia is described as new for science. The early stages and the female of this species are still unknown. Differences to closely related species are given. The only specimen of the new species was found in the steppes and semidesert areas of the valley of River Zavchan in the Western Mongolian Mountain Region near Zavchan Somon. *Talis astridella* sp. n. is described on the basis of one male.

Introduction

During examination of the material of the German-Mongolian Expedition in 1977, deposited in the Entomological Collection of the Institute of Zoology of the University of Halle, some specimens of Crambidae were found. One large and very contrastly marked male specimen of the genus *Talis* GUENÉE could not be assigned to any known species. It is described as holotype of *Talis astridella* sp. n.

Talis astridella sp. n.

Locus typicus: Western Mongolia, valley of the River Zavchan.

Holotypus: Male, with the labels "Mongolia occ., Chovd-Aimak, Zavchan Somon, 19. VIII. 1977, leg.: A. et M. Stubbe" (white label) and "Holotype, *Talis astridella* sp. n., det.: INGMAR LANDECK 1992, Genital: GU-022 La" (red label).

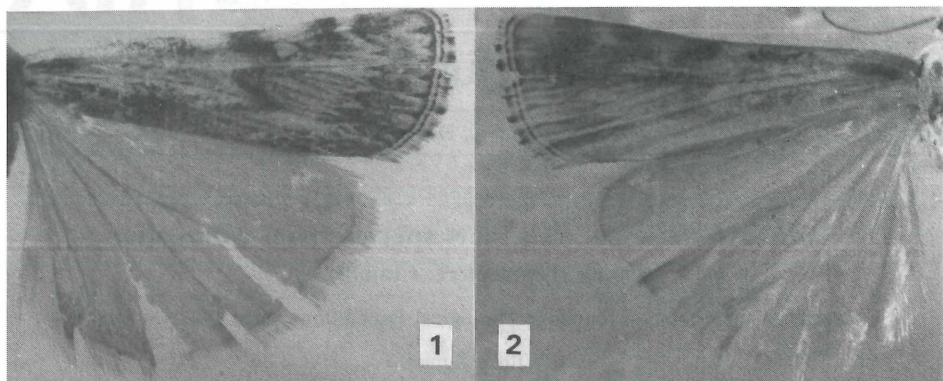
The holotype is deposited in the Entomological Collection of the Institute of Zoology of the Martin-Luther-Universität of Halle (Saale).

Description

Male: Head (fig. 3) ivory-coloured, length of the process of frons 0,6¹⁾; maxillar palpi 1¹⁾, brush-shaped; labial palpi 2¹⁾, drooped; wing expansion 37 mm; tegulae ivory-coloured, upperside of thorax brown (underside creme-coloured), tegulae dark brown bordered against thorax; abdomen and legs creme-coloured, end of tibia of all legs with a ring of brown scales.

Antennae (fig. 4) coarsely serrated, length of cilia coincide with the diameter of antenna, teeth with upright standing tips; forewings (figs. 1 and 2) rich in contrast, ground colour yellow ivory-coloured,

¹⁾ in eye diameter



Figs. 1+2: *Talis astridella* sp. n., wings upperside (1) and underside (2). (Photos: V. Schultz)

towards the costa lightened, costa with four dark brown patches, mostly the inwards situated patch indistinct, veins particularly dark dusty, a short dark stripe runs unregularly from the basal part to the posterior edge and leads into a patch washed out, between the two middle costal patches there is situated a white, black bordered drop-shaped spot, below the second costal patch a dark brown S-shaped spot, a broad brown band runs from the external costal spot to the posterior edge of forewing, this band is bordered insides by arrows between the veins, between the S-shaped spot and the brown band are a number of tiny dark fan-shaped lines.

Termen creme-coloured between two dark lines, inner line whitish, inwards with dark arrows on veins r3-an, scales of termen at each end of veins whitish and between this ends of veins dark. Hindwings ivory-coloured and shiny, scales of termen white and silky.

Male genitalia: Aedeagus (fig. 5) long and slender with one cornutus of half length of aedeagus, end of cornutus somewhat bent, aedeagus of the same length of valvae; valvae (fig. 6) bent outwards with short and strong setae, their basal third without setae; uncus (fig. 7) on the end with extreme long setae, basal part of uncus with short setae; gnathos long, with a peg-shaped apex; juxta (fig. 8) pear-shaped, membranous.

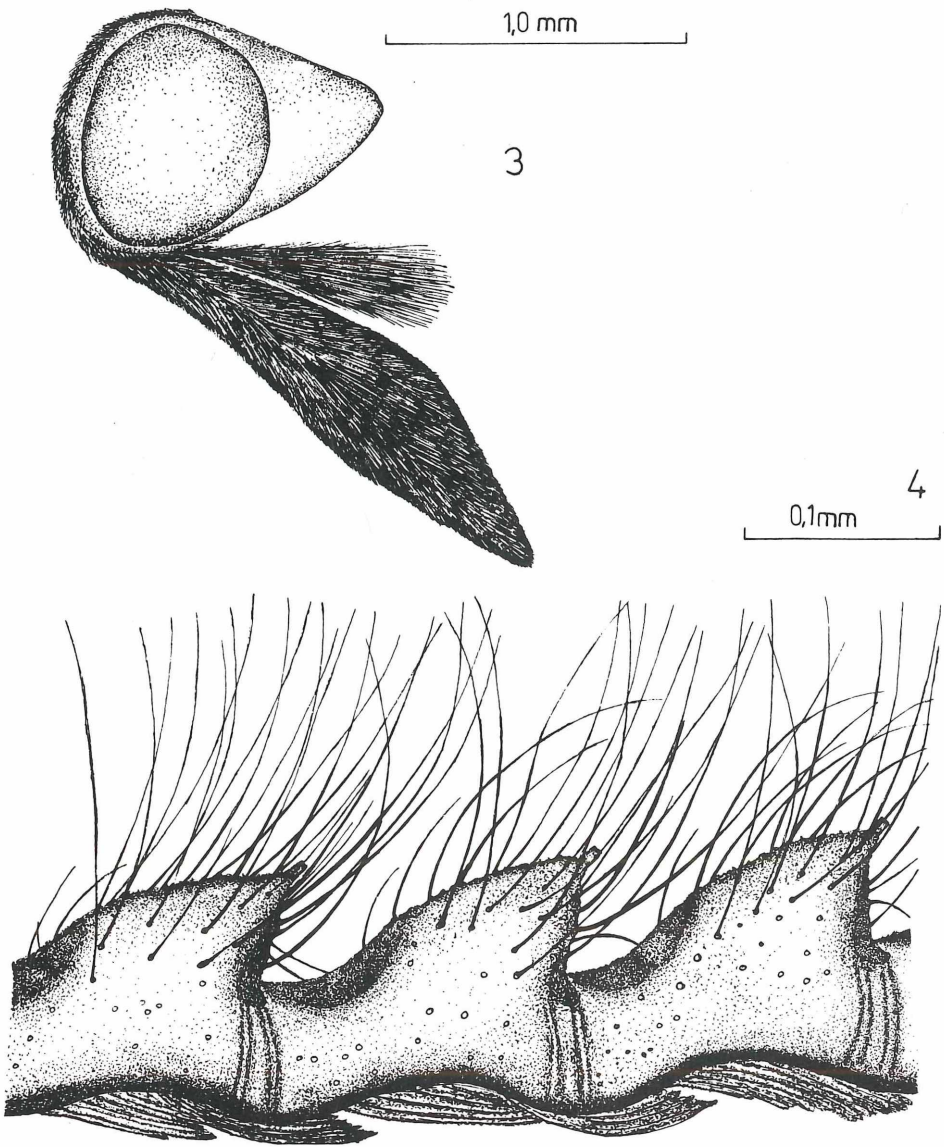
Differential diagnosis and comments

Talis astridella sp. n. is closely related to *Talis mongolica* BLESZYNSKI, 1965, *T. povolnyi* ROESLER, 1975, *T. menetriesi* HAMPSON, 1900, *T. griseus* FILIPJEV & DJAKONOV, 1924 and *T. afghanella* BLESZYNSKI, 1965. *Talis griseus* FILIPJEV & DJAKONOV, 1924 and *T. afghanella* BLESZYNSKI, 1965 have no serrated antennae. The males of *T. mongolica* BLESZYNSKI, 1965 and *T. povolnyi* ROESLER, 1975 are distinguished by the absence of cornuti. *T. menetriesi* HAMPSON, 1900 shows in contrast to *T. astridella* sp. n. the valvae lesser bent outwards. *T. astridella* sp. n. is very well characterized by significant arrows on the submarginal part of the forewings, coarsely serrated antennae with upright standing tips and long maxillar palpi.

The female is unknown.

Biology

The holotype was found in the settlement of Zavchan Somon. Around this settlement dominate semidesert areas with *Caragana* (Fabaceae) and tussocks of xeromorphe grasses (*Lasiagrostis splendens*) near a small river. The early stages and the food plant of larvae are unknown. The adult male was sampled in August.



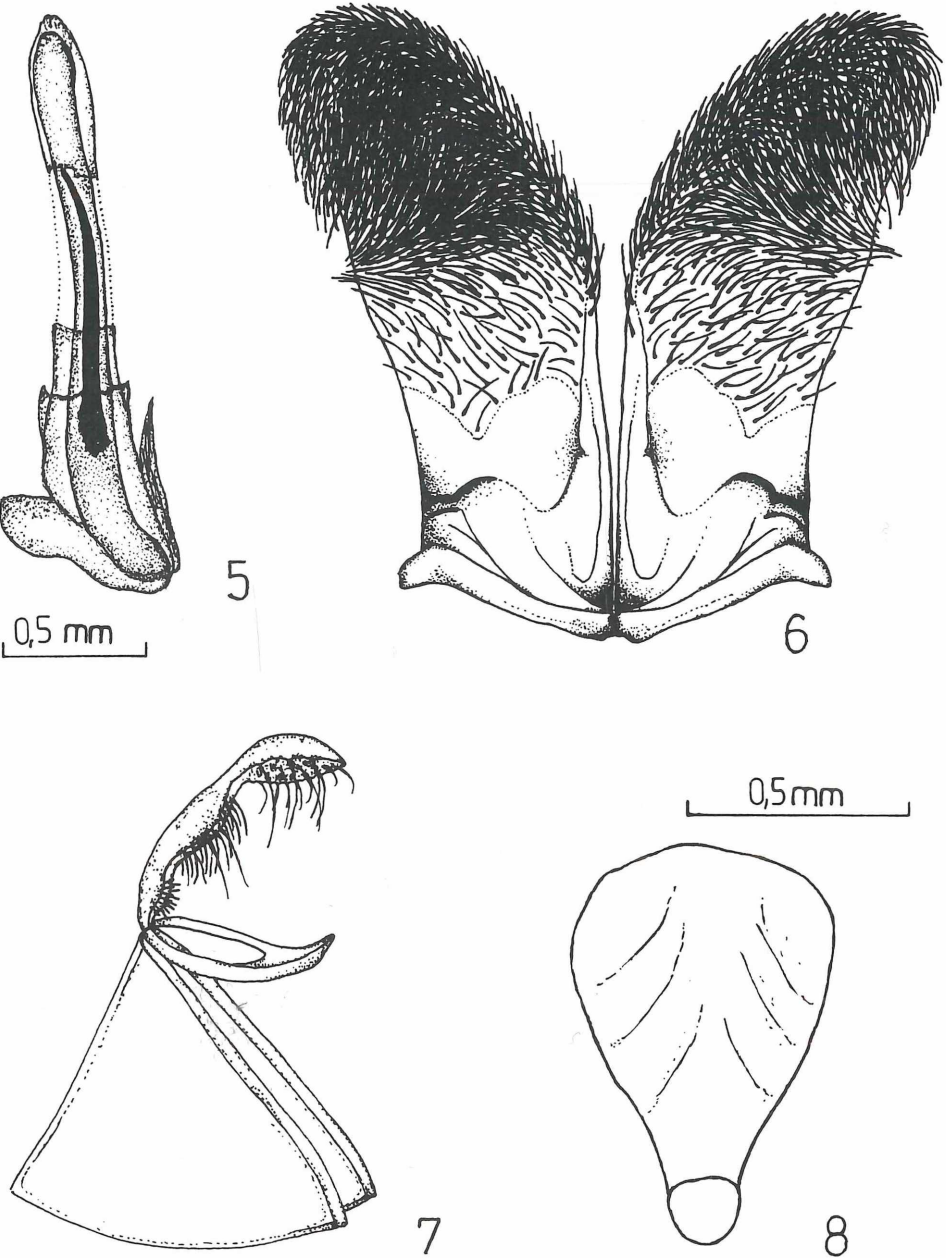
Figs. 3+4: *Talis astridella* sp. n., male, holotype, head (3) and antenna (4).

Etymology

I dedicate this new species to a loveable person, who meant to me very much in a time of my life.

Acknowledgements

I am grateful to Prof. Dr. M. Stubbe, Dr. M. Dorn (both Institute of Zoology, Halle), Dr. M. Shaffer (BMNH, London) and Prof. Dr. R.-U. Roesler (Kandel) for helpful discussions. Dr. J. Gaskin



Figs. 5-8: *Talis astridella* sp. n., male, holotype (GU-022 La), aedeagus (5), valvae (6), uncus, gnathos and tegumen (7), juxta (8). (Scale at fig. 5 for figs. 5-7)

(University of Guelph, Ontario) and W. Nässig (University of Frankfurt a. M.) supported me in the search for some descriptions of closely related species.

References

- BLESZYNSKI, St., 1965: Crambinae. In: *Microlepidoptera Palaearctica*, Bd. 1. Wien.
- HANNEMANN, H.-J., 1964: Kleinschmetterlinge oder Microlepidoptera I. Die Wickler und die Zünslerartigen. In: DAHL, F., *Die Tierwelt Deutschlands*, 50. Teil. Jena.
- ROESLER, R. U., 1975: Ergebnisse der zoologischen Forschungen von Dr. Z. Kaszab in der Mongolei Nr. 376. Drei neue Crambidae. - *Entomol. Zeitschr.* **21**, 233-240.
- WANG, P., SUNG, S., 1982: Notes on chinese species of the genus *Talis* GUENÉE (Lepidoptera, Pyralidae). - *Acta Zootaxonomica sinica* **7**, 293-299.

Adress of the author:

I. Landeck, Dresdener Straße 214, D (O) - 7980 Finsterwalde

(Received on 13. II. 1992)

ZOBODAT - www.zobodat.at

Zoologisch-Botanische Datenbank/Zoological-Botanical Database

Digitale Literatur/Digital Literature

Zeitschrift/Journal: [Reichenbachia](#)

Jahr/Year: 1992

Band/Volume: [29](#)

Autor(en)/Author(s): Landeck Ingmar

Artikel/Article: [Talis astridella sp. n., a new species from Mongolia \(Insecta, Lepidoptera: Crambidae\). Results of the German-Mongolian Biological Expeditions since 1962 \(Nr. 219\) 161-165](#)